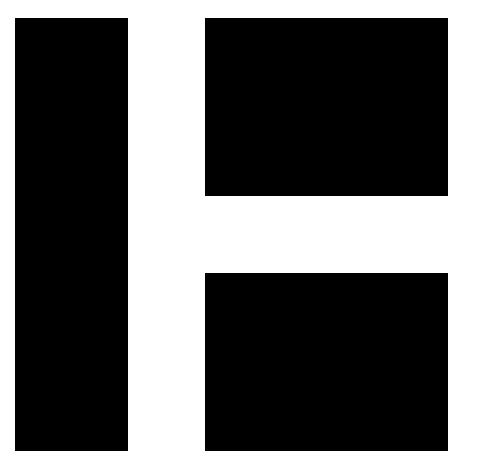


| MATERIAL SCHEDULE |                                      |                                                       |
|-------------------|--------------------------------------|-------------------------------------------------------|
| LABEL             | DESCRIPTION                          | MANUFACTURER / COLOR                                  |
| 1A                | BRICK VENEER (FIELD)                 | GLEN-GERY, SUNSET S15                                 |
| 1B                | BRICK ACCENT                         | GLEN-GERY, BURGUNDY IRONSPOT SIS1                     |
| 2A                | BRICK VENEER (FIELD)                 | GLEN-GERY, OYSTER GREY S56                            |
| 2B                | BRICK ACCENT                         | GLEN-GERY, DARK GREY S77                              |
| 3A                | BRICK VENEER (FIELD)                 | GLEN-GERY 8-SQUARE PANELBRICK, SUNSET S15             |
| 3B                | BRICK ACCENT                         | GLEN-GERY 8-SQUARE PANELBRICK, BURGUNDY IRONSPOT SIS1 |
| 4A                | LAMINATED BAMBOO RAINSCREEN ASSEMBLY | LAMBOO RAINSCREEN, FAWN                               |
| 5A                | COMPOSITE METAL WALL PANEL           | ALUCOBOND, COLOR AS SELECTED BY ARCHITECT             |
| 5B                | METAL ROOF EDGE STRIP                | COLOR AS SELECTED BY ARCHITECT                        |
| 6A                | SUN SHADE SYSTEM                     | -                                                     |
| 7A                | HM DOOR AND FRAME                    | COLOR AS SELECTED BY ARCHITECT                        |
| 8A                | SKYLIGHT                             | -                                                     |



**HARRIMAN**

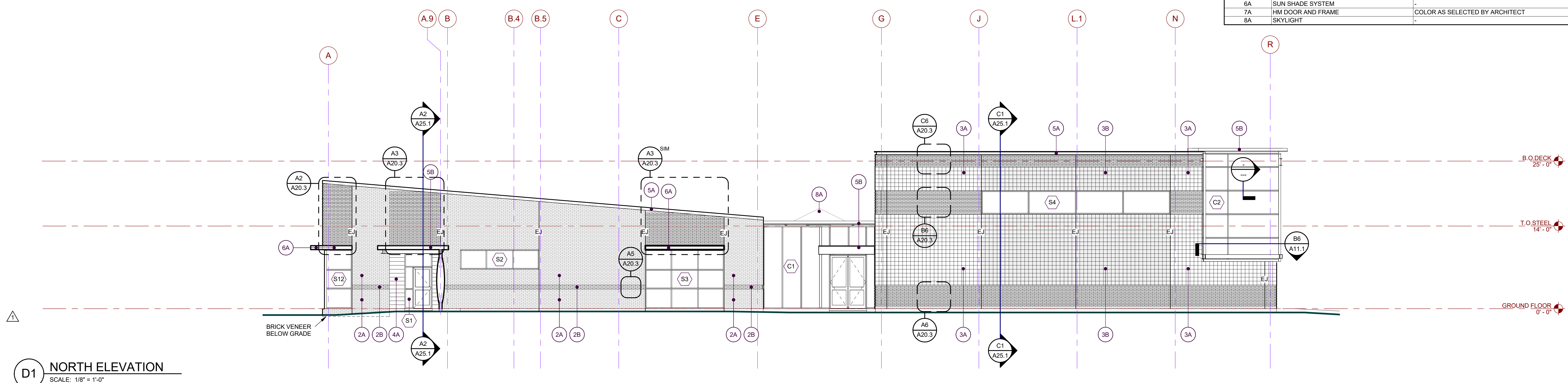
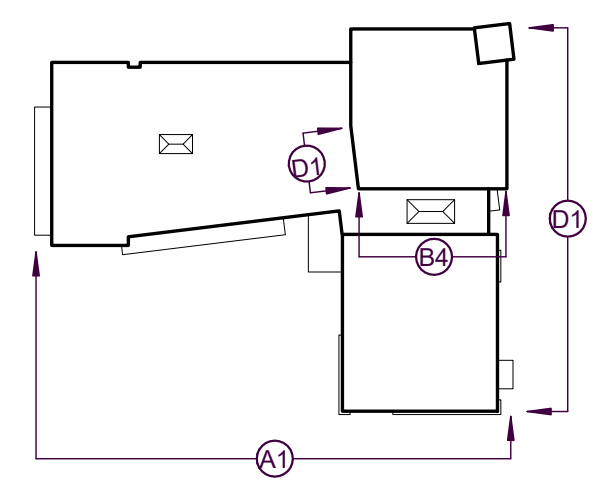
AUBURN PORTLAND MANCHESTER

**JEWISH COMMUNITY ALLIANCE OF SOUTHERN MAINE**

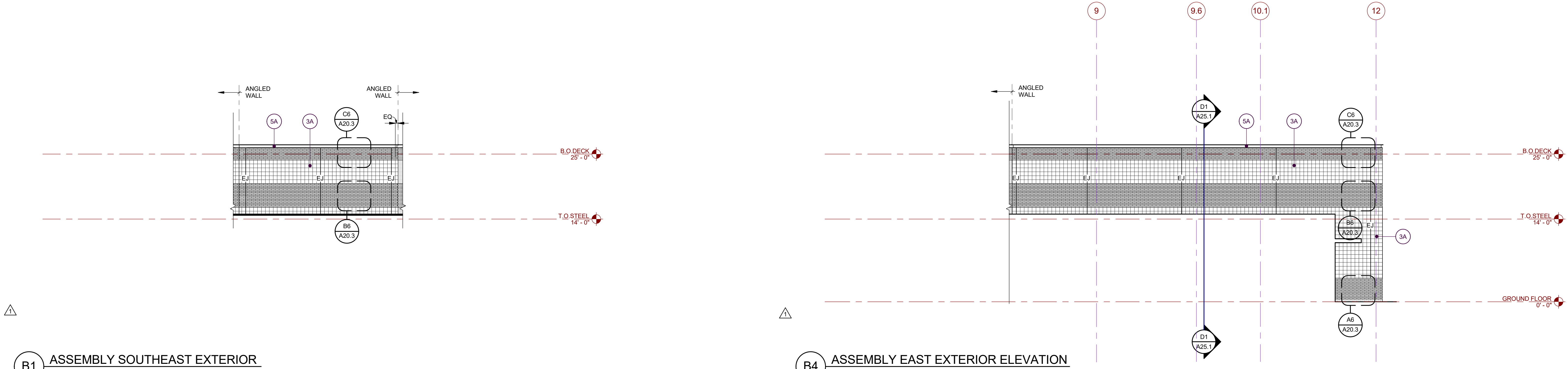
PORTLAND, ME

Harriman Project No. 15309

Key Plan Prof North

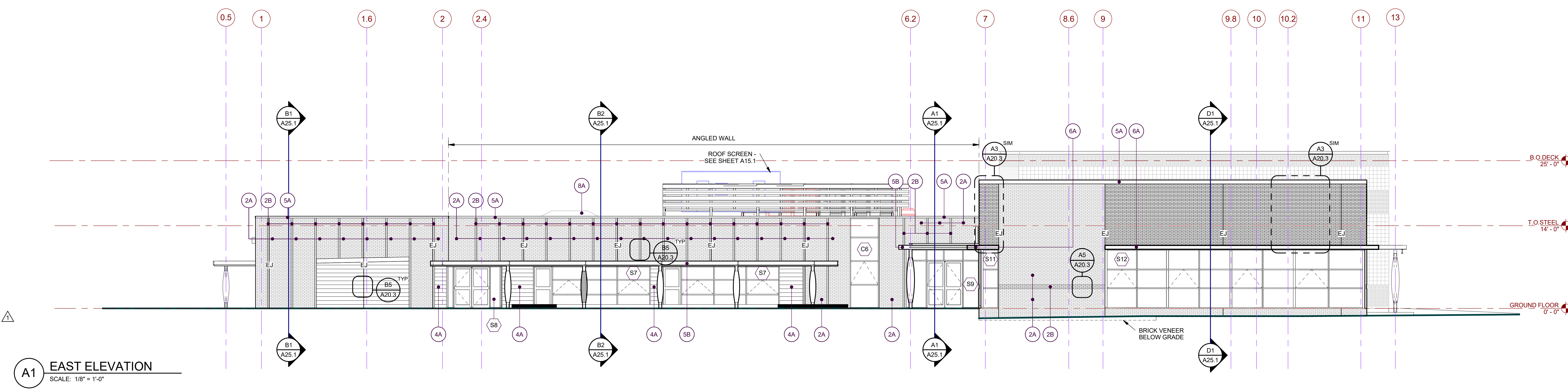


**D1 NORTH ELEVATION**  
SCALE: 1/8" = 1'-0"



**B1 ASSEMBLY SOUTHEAST EXTERIOR**  
SCALE: 1/8" = 1'-0"

**B4 ASSEMBLY EAST EXTERIOR ELEVATION**  
NO SCALE



**A1 EAST ELEVATION**  
SCALE: 1/8" = 1'-0"

| Issues and Revisions |          |                           |
|----------------------|----------|---------------------------|
| Mark                 | Date     | Description               |
| -                    | 07-22-15 | SCHEMATIC REVIEW          |
| -                    | 07-24-15 | REVISED SCHEMATIC REVIEW  |
| -                    | 09-04-15 | DESIGN DEVELOPMENT REVIEW |
| -                    | 03-25-16 | CONSTRUCTION DOCUMENTS    |
| 1                    | 04-15-16 | ADDENDUM #1               |

| Drawing Scales |                            |
|----------------|----------------------------|
| 1/8" = 1'-0"   | -                          |
| -              | -                          |
| -              | -                          |
| -              | -                          |
| PA / PE: MDL   | © 2016 Harriman Associates |
| Drawn By: JAE  |                            |

**EXTERIOR ELEVATIONS**

**A20.1**