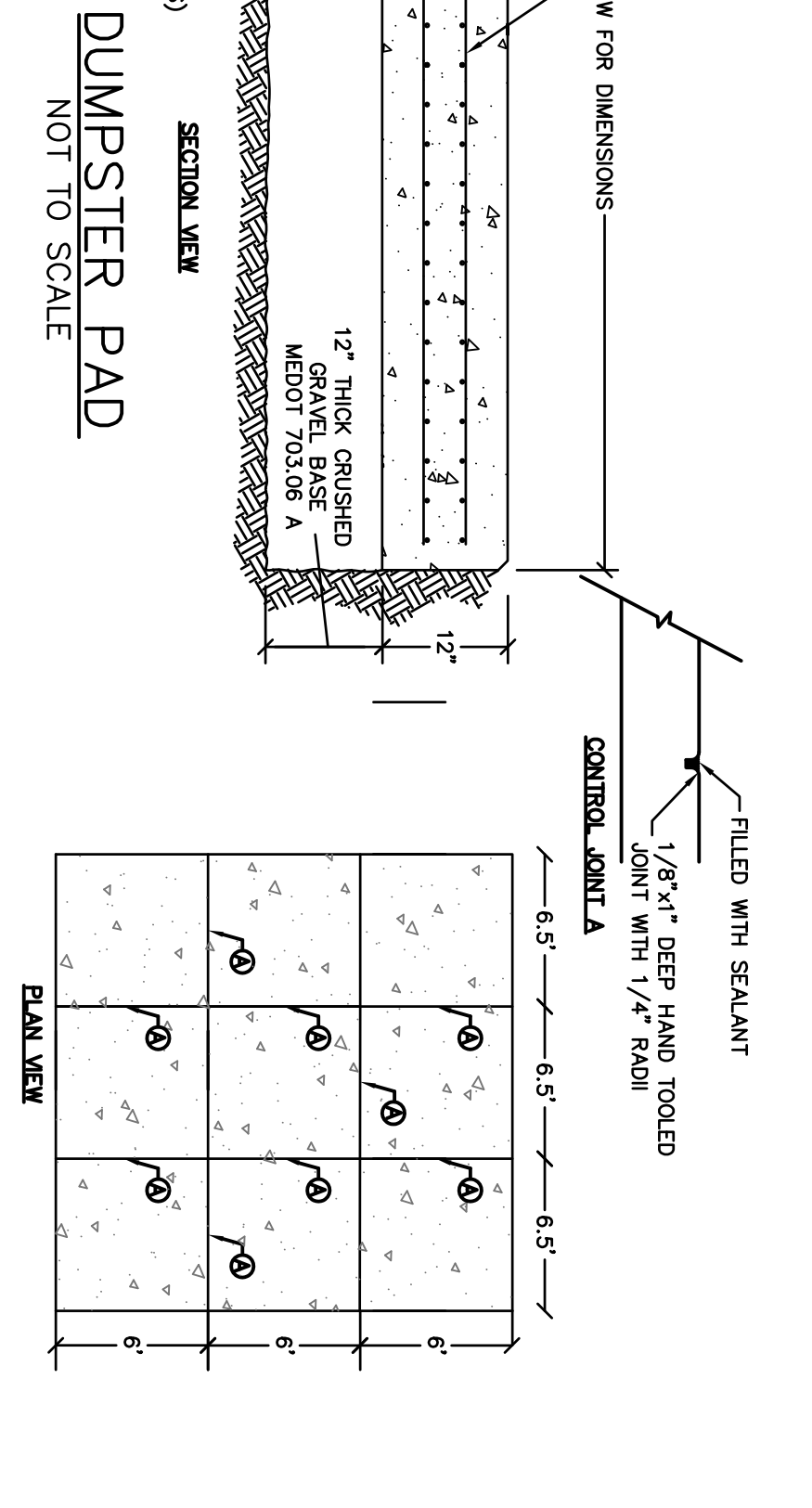


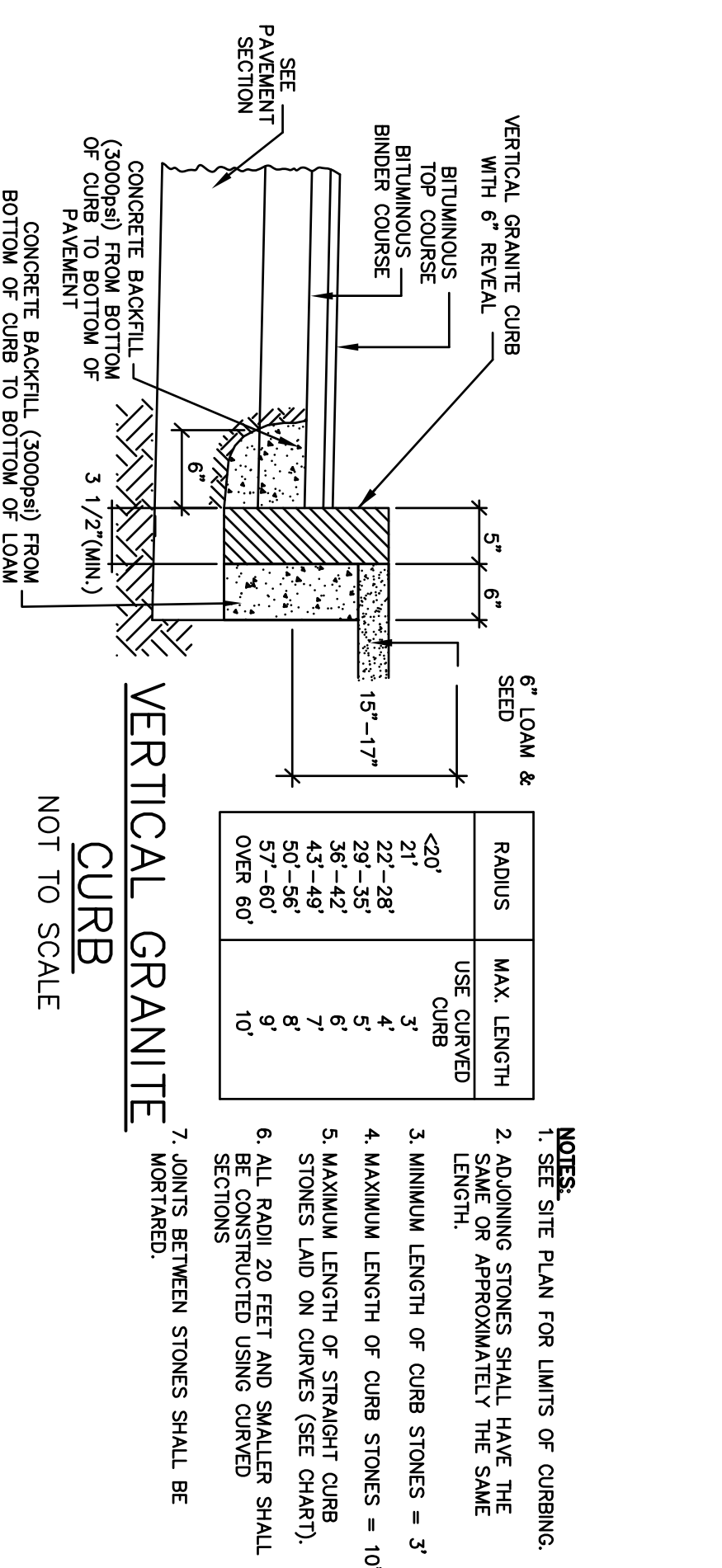
**NOTES:**

- SEE SITE PLAN FOR PAVEMENT WIDTH AND LOCATION.
- SEE GRADING, DRAINAGE AND EROSION CONTROL PLAN FOR PAVEMENT SLOPE AND WEARING COURSE.
- A TACK COAT SHALL BE PLACED ON TOP OF BINDER COURSE PAVEMENT PRIOR TO PLACING WEARING COURSE.
- CONCRETE SHALL BE PLACED ON TOP OF BINDER COURSE PAVEMENT PRIOR TO REINFORCING THE MATERIAL, THEN REINFORCING THE RECLAIMED MATERIAL, AS A PAVEMENT SUBBASE.



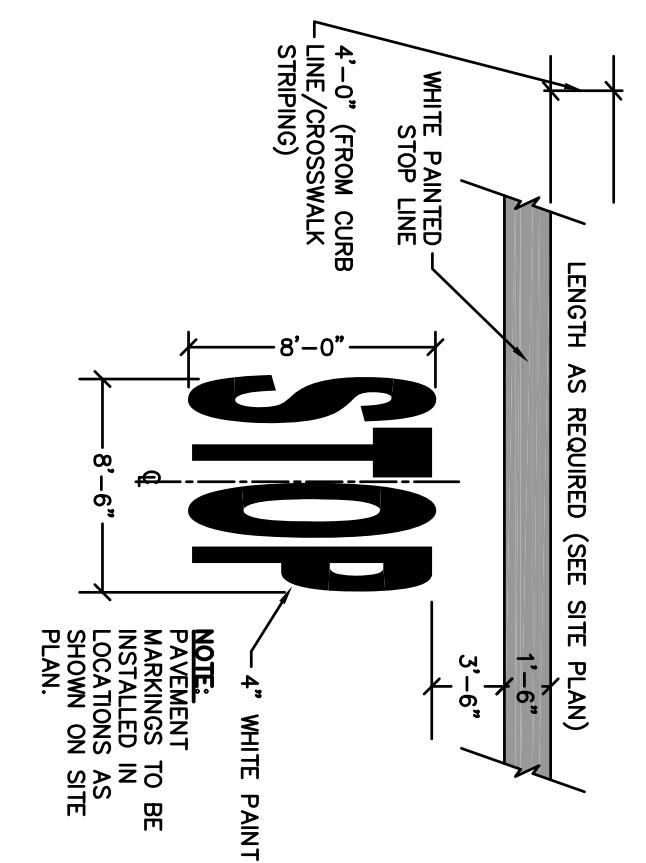
**NOTES:**

- CONCRETE TO BE 4000 PSI, 1 1/2% AIR ENTRAINED.
- STANDARD BROOK FINISH.



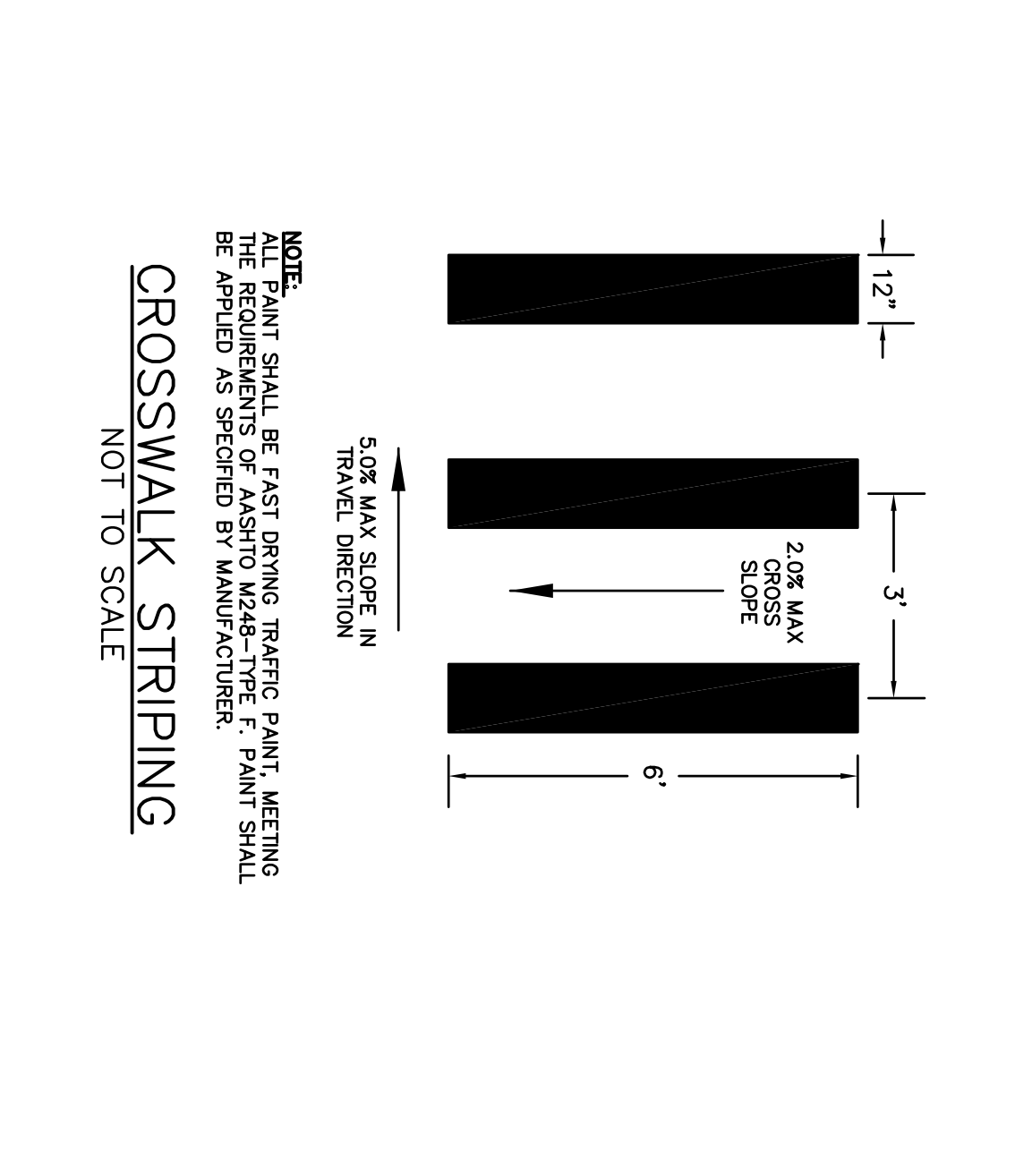
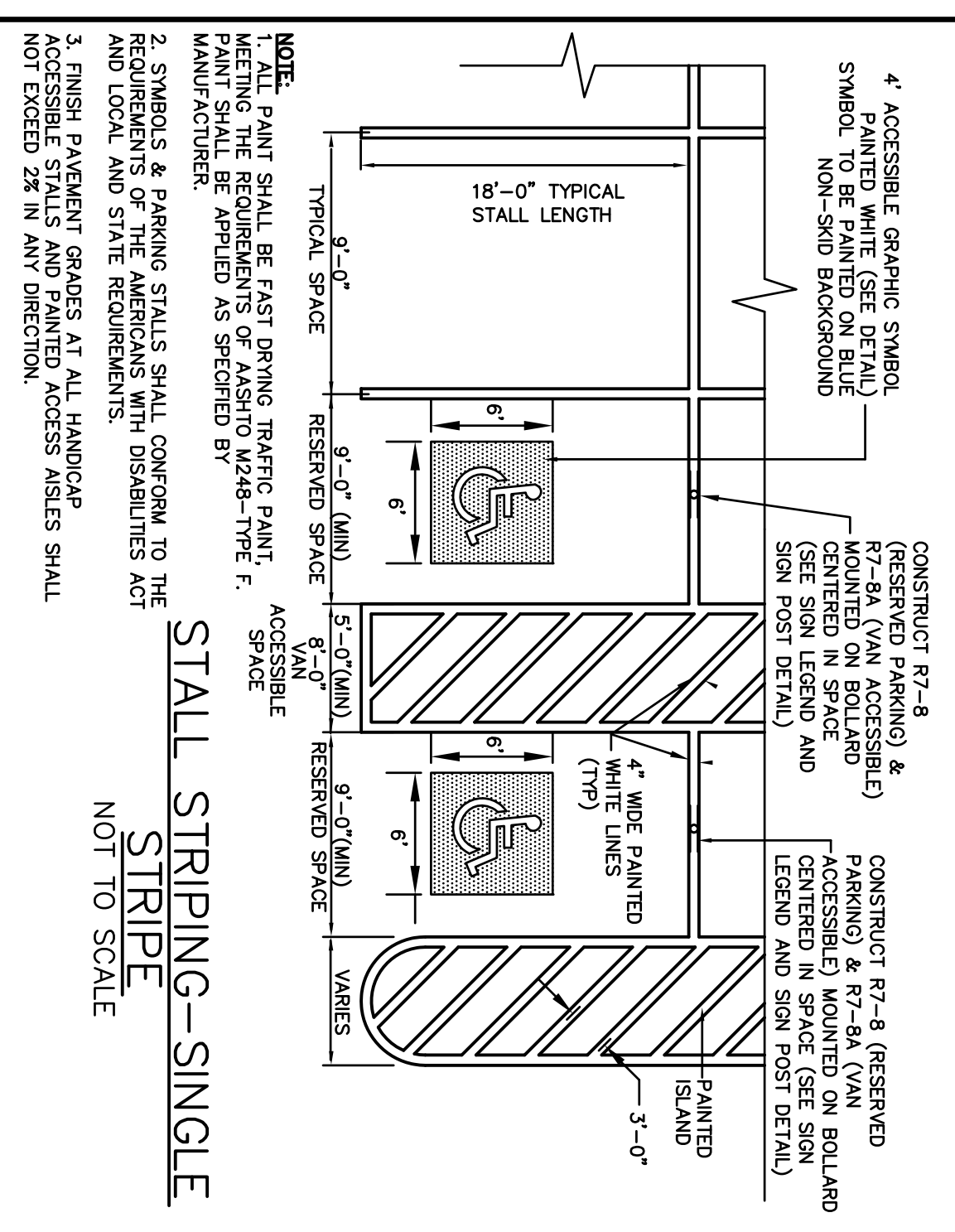
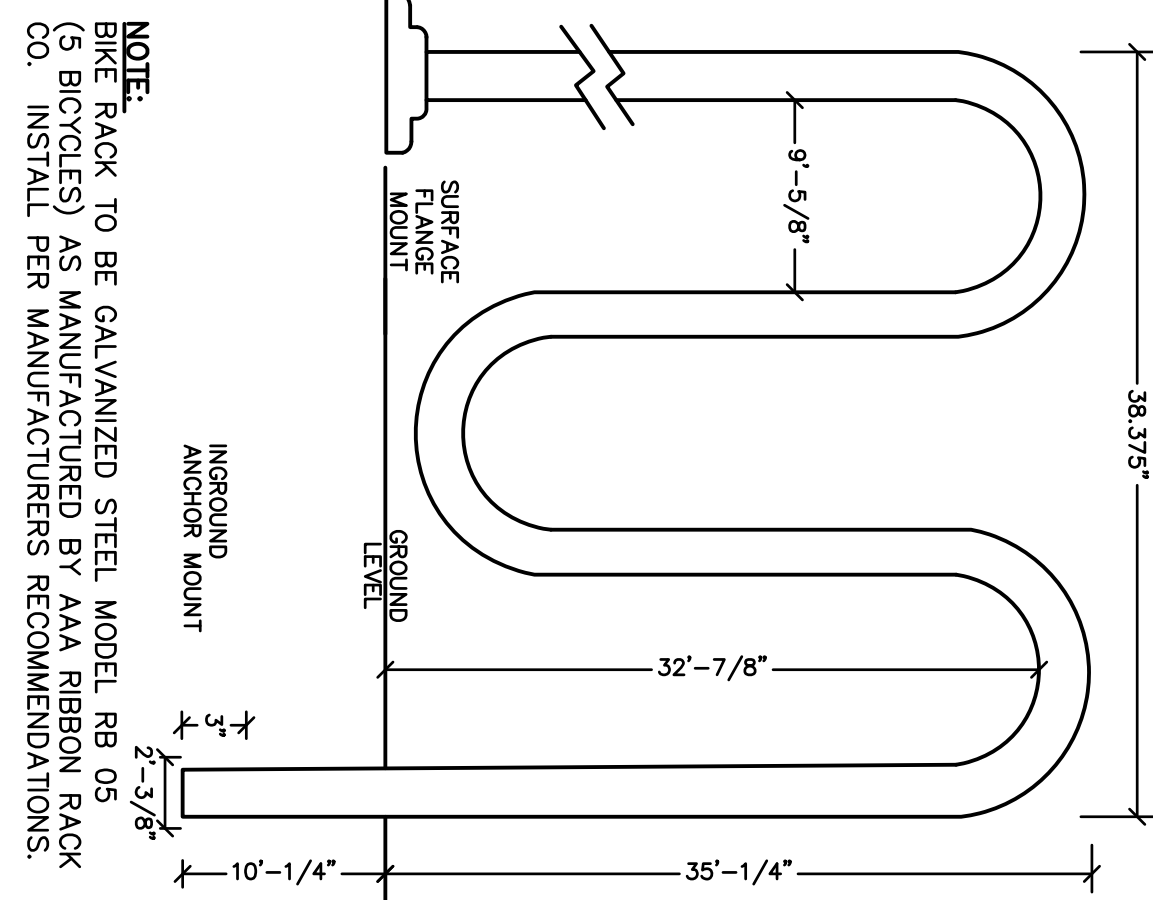
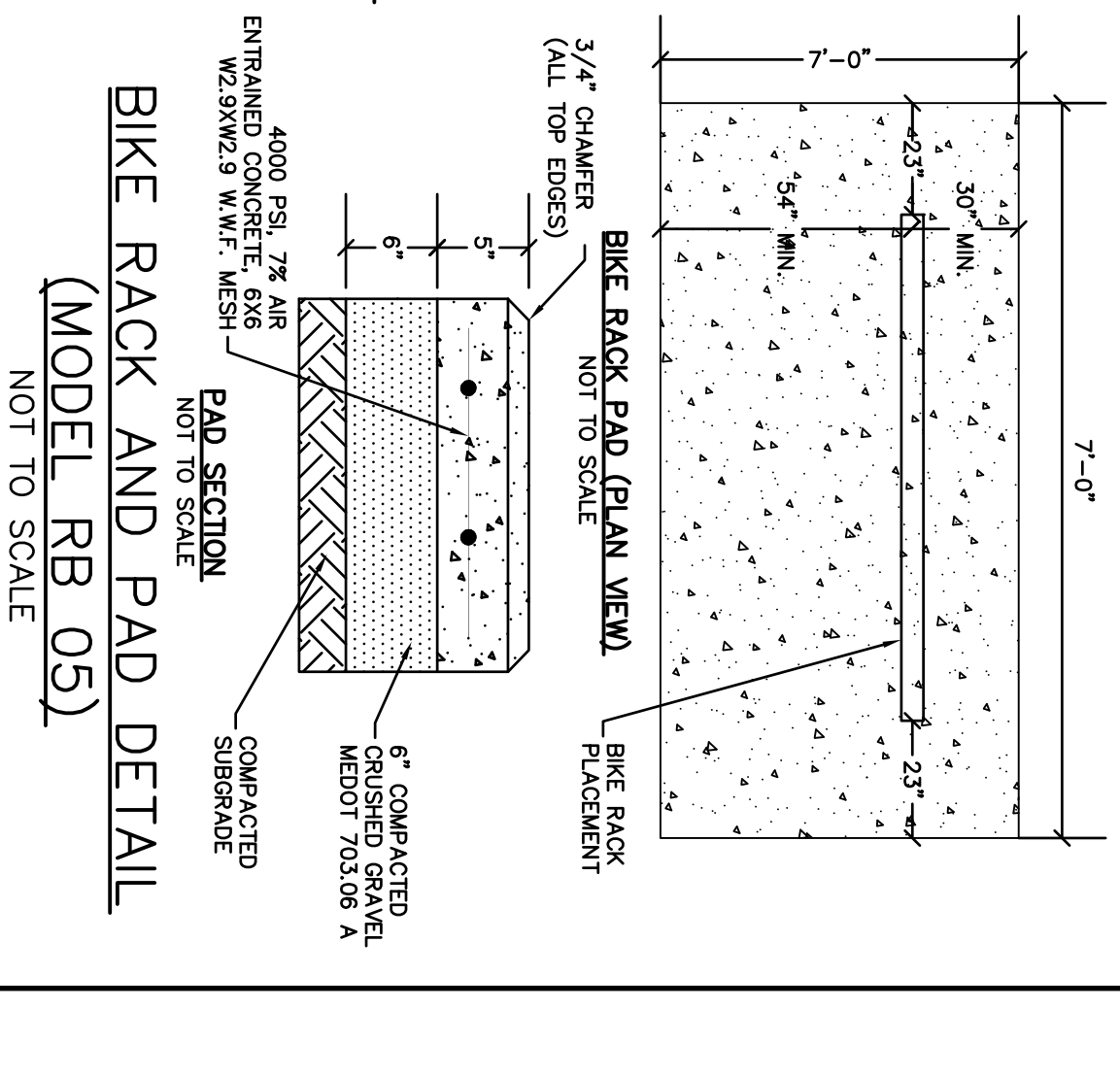
**NOTES:**

- SEE SITE PLAN FOR LIMITS OF CURBING.
- ADJOINING STONES SHALL HAVE THE SAME LENGTH OR APPROXIMATELY THE SAME LENGTH.
- MINIMUM LENGTH OF CURB STONES = 3'
- MAXIMUM LENGTH OF CURB STONES = 10'
- MAXIMUM LENGTH OF STRAIGHT CURB STONES LAD ON CURVES (SEE CHART).
- ALL RADI 20 FEET AND SMALLER SHALL BE CONSTRUCTED USING CURVED SECTIONS.
- JOINTS BETWEEN STONES SHALL BE MORTARED.



**NOTES:**

- PAVEMENT MARKINGS TO BE LOCATIONS AS SHOWN ON SITE PLAN.

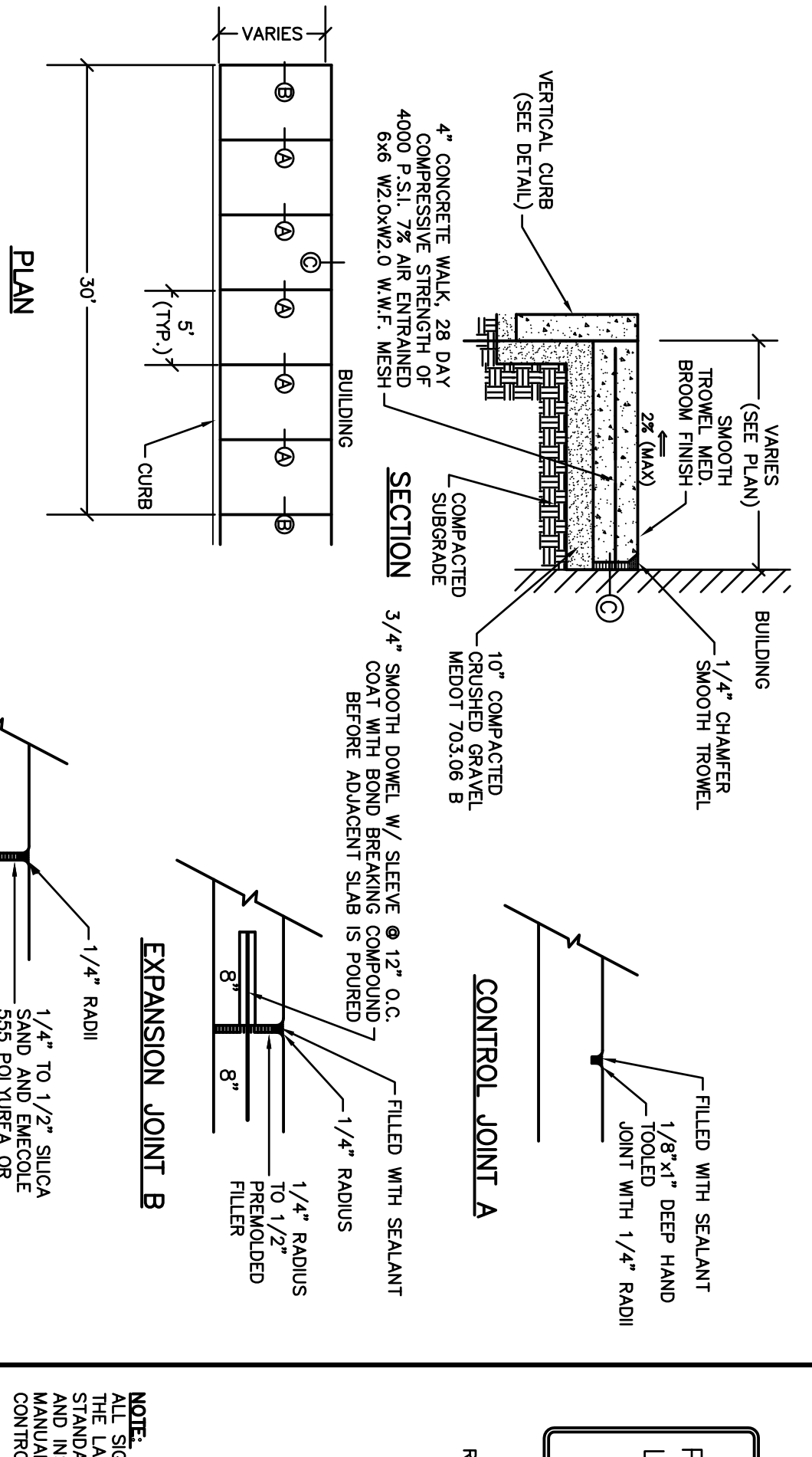
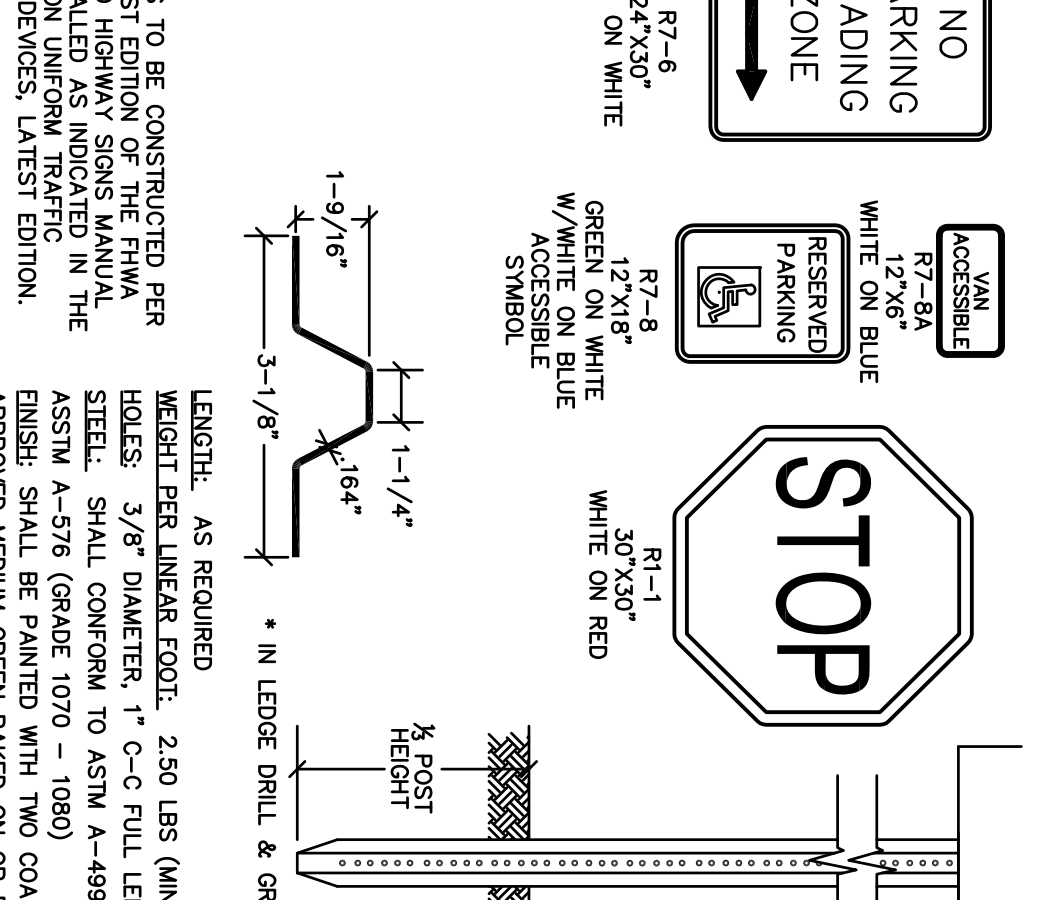
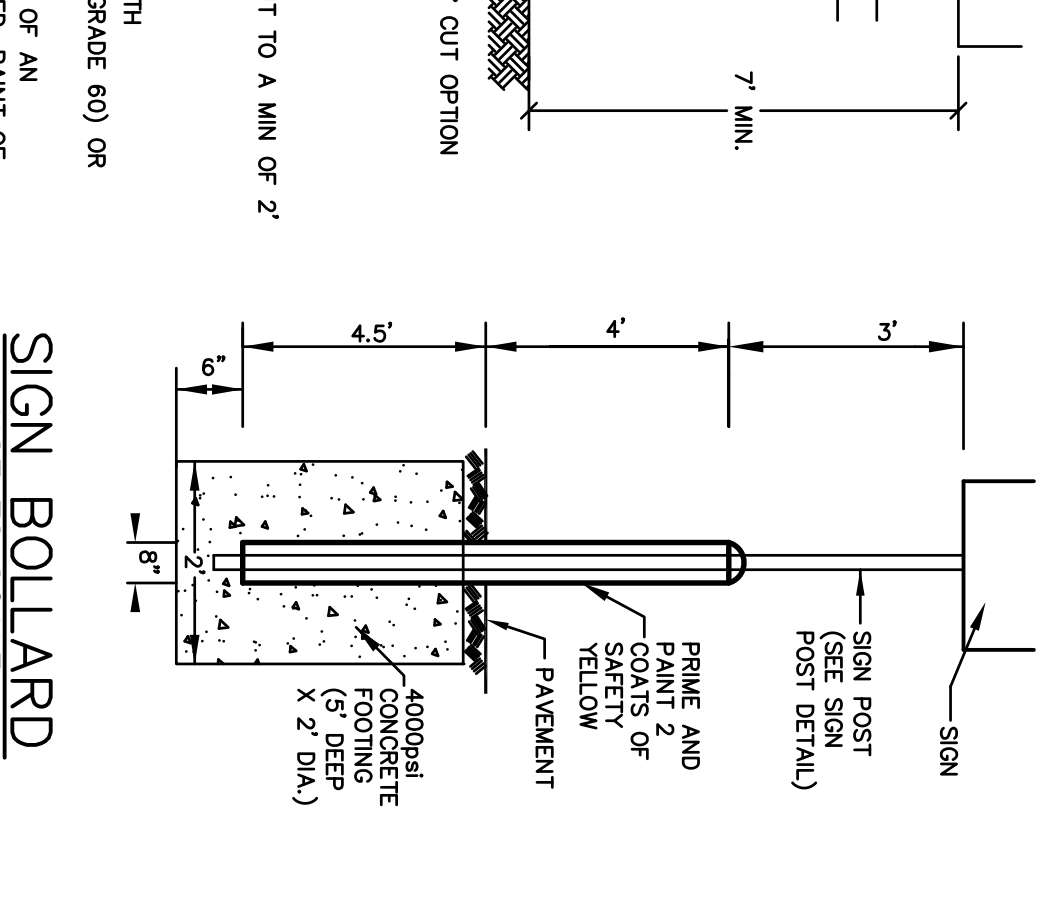
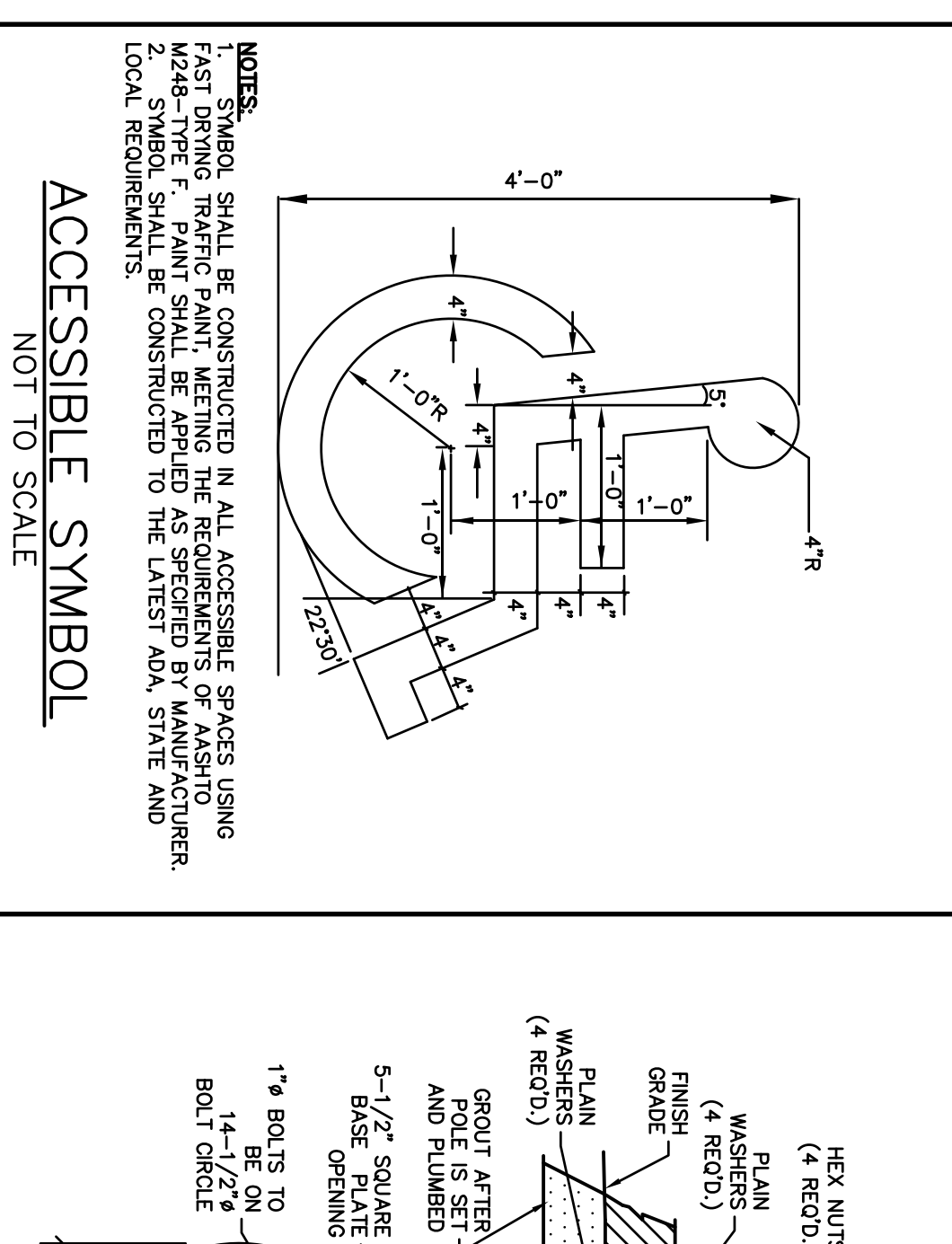
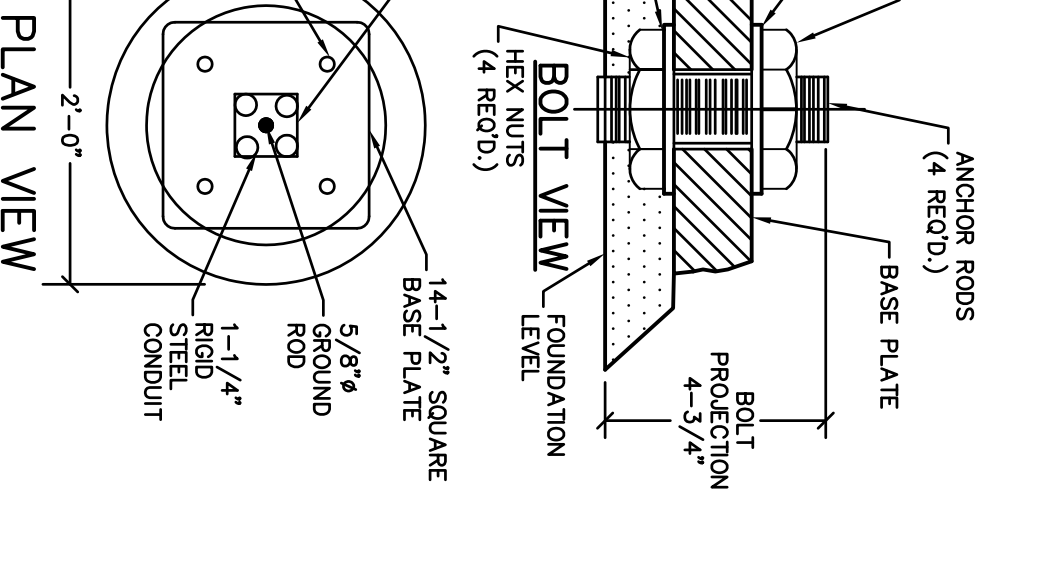


**NOTE:**

ALL PAINT SHALL BE FAST DRYING TRAFFIC PAINT MEETING THE REQUIREMENTS OF ASHTO M248-TYPE F. PAINT SHALL BE APPLIED AS SPECIFIED BY MANUFACTURER.

**NOTE:**

PAINT SHALL BE FAST DRYING TRAFFIC PAINT MEETING THE REQUIREMENTS OF ASHTO M248-TYPE F. PAINT SHALL BE APPLIED AS SPECIFIED BY MANUFACTURER.

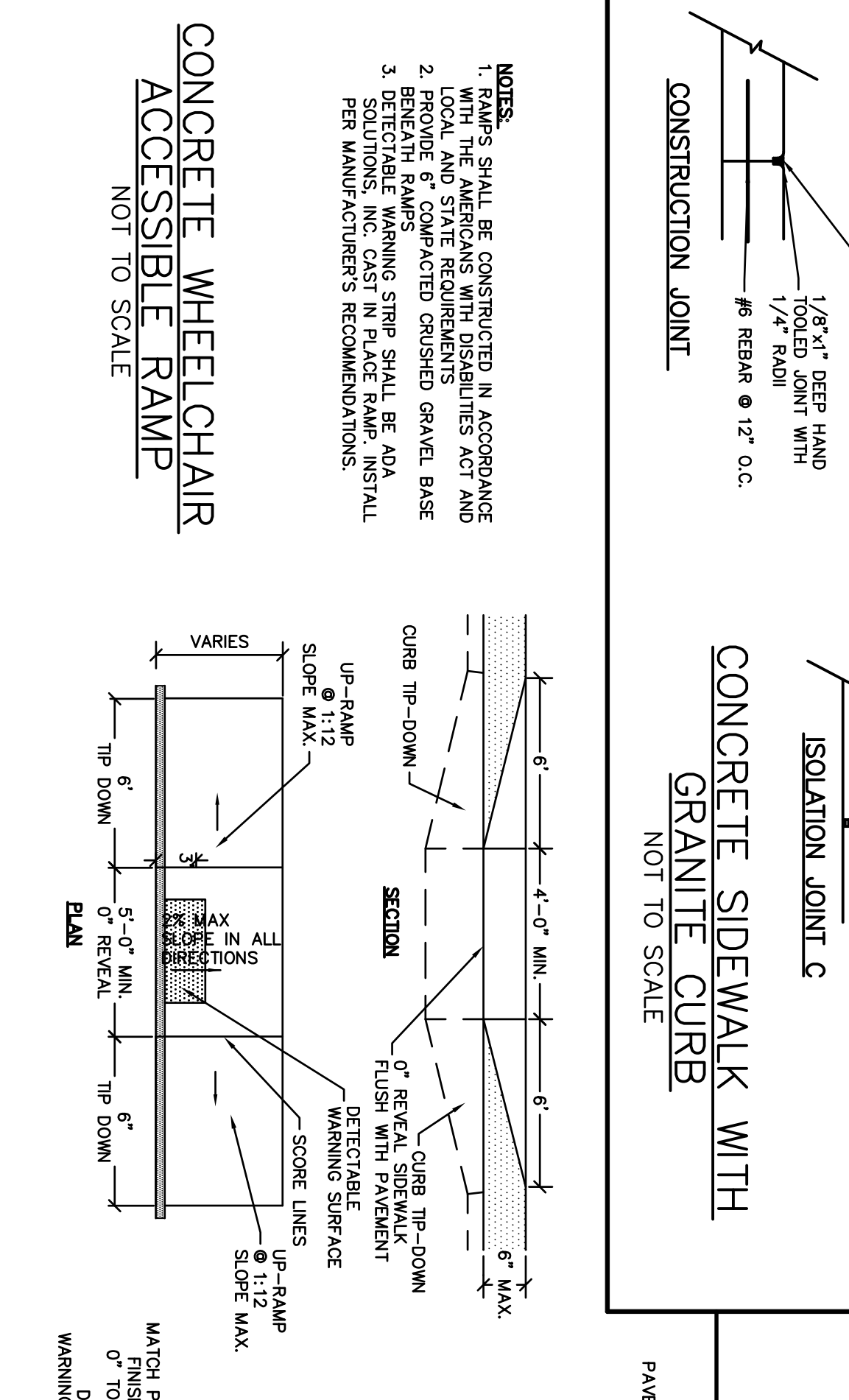
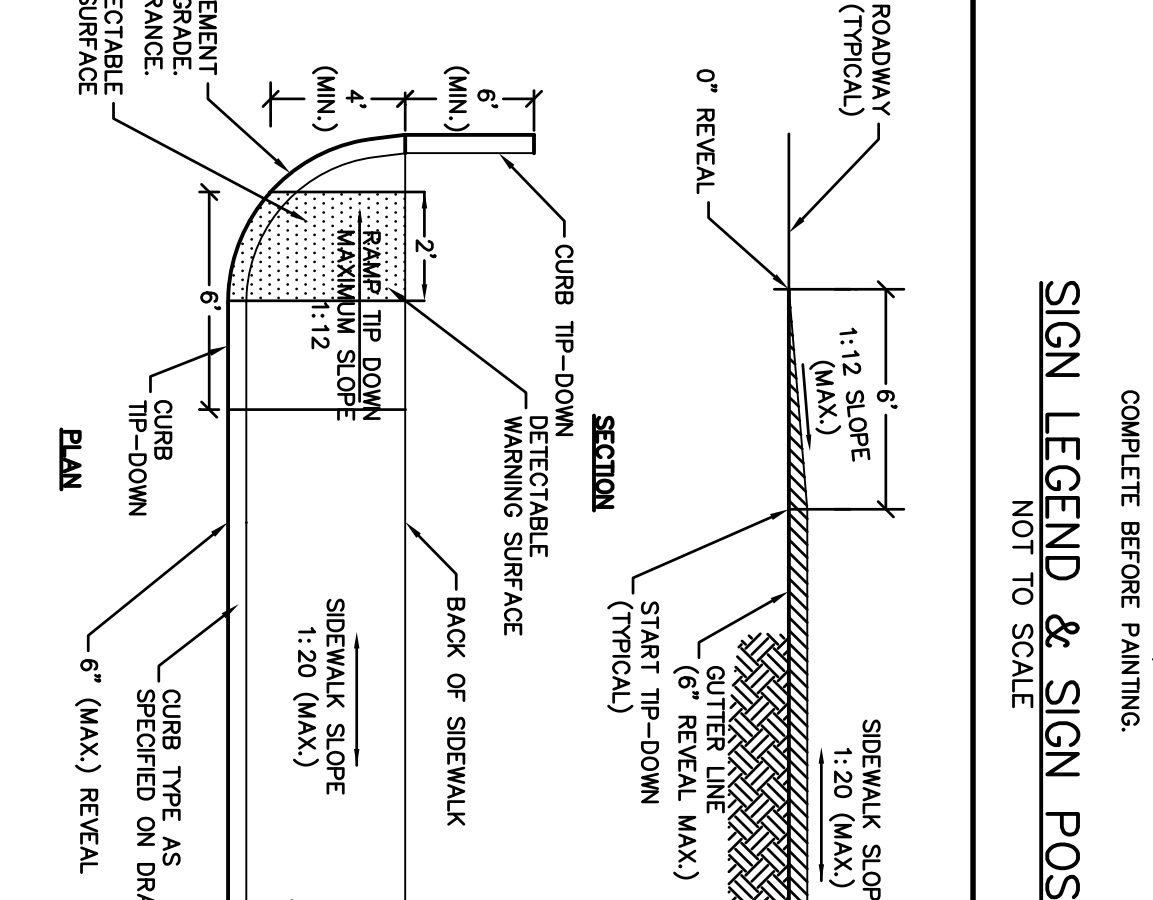
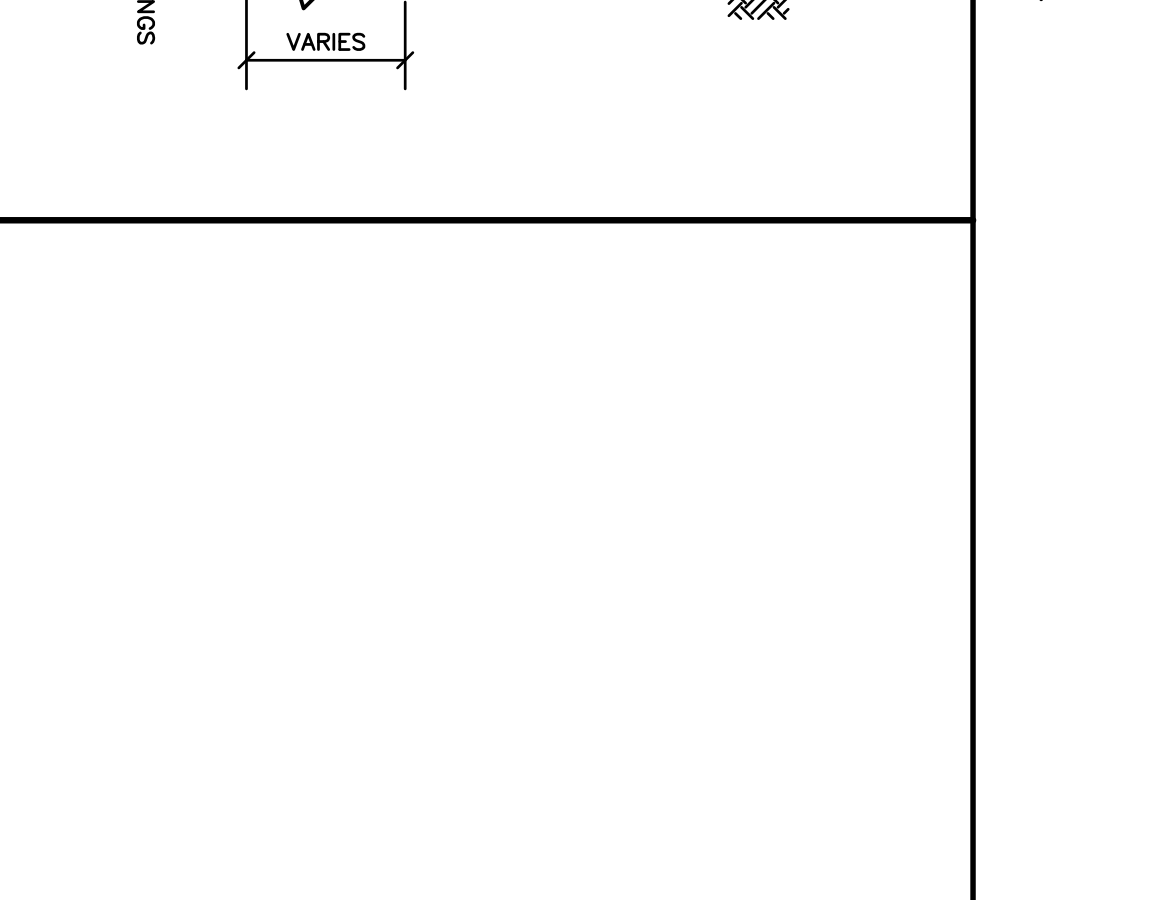
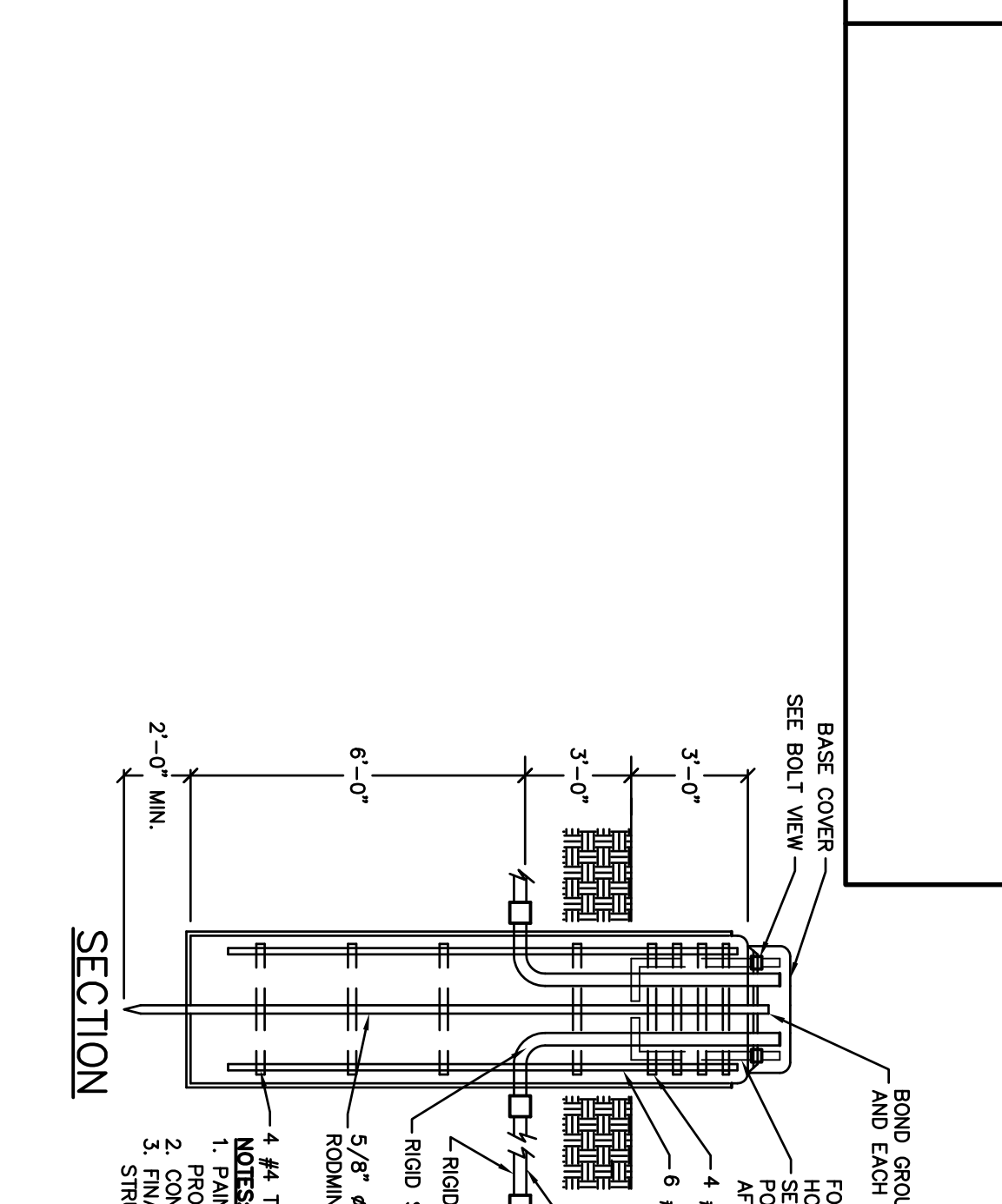
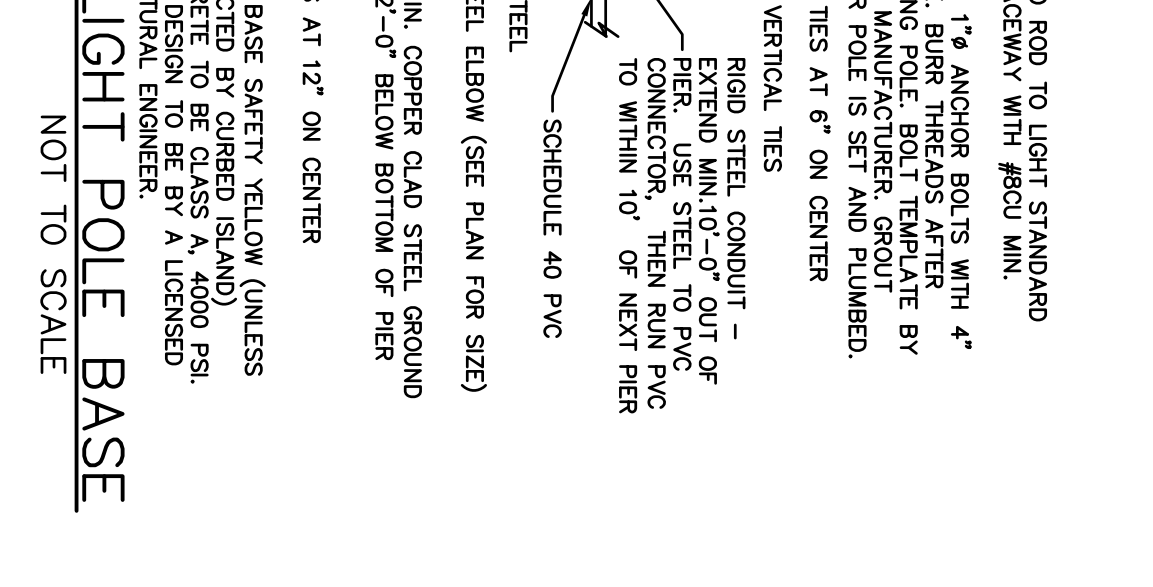


**NOTES:**

- RAMPS SHALL BE CONSTRUCTED IN ACCORDANCE WITH THE AMERICANS WITH DISABILITIES ACT AND 2. PROVIDE 6" COMPACTED CRUSHED GRAVEL BASE
- BENCH MARKS SHALL BE ADJ PER MANUFACTURER'S RECOMMENDATIONS.

**NOTES:**

- PAVEMENT MARKINGS TO BE LOCATIONS AS SHOWN ON SITE PLAN.



**NOTES:**

- RAMPS SHALL BE CONSTRUCTED IN ACCORDANCE WITH THE AMERICANS WITH DISABILITIES ACT AND 2. PROVIDE 6" COMPACTED CRUSHED GRAVEL BASE
- BENCH MARKS SHALL BE ADJ PER MANUFACTURER'S RECOMMENDATIONS.

**NOTES:**

- SEE SITE PLAN FOR LIMITS OF CURBING.
- ADJOINING STONES SHALL HAVE THE SAME LENGTH OR APPROXIMATELY THE SAME LENGTH.
- MINIMUM LENGTH OF CURB STONES = 3'
- MAXIMUM LENGTH OF CURB STONES = 10'
- MAXIMUM LENGTH OF STRAIGHT CURB STONES LAD ON CURVES (SEE CHART).
- ALL RADI 20 FEET AND SMALLER SHALL BE CONSTRUCTED USING CURVED SECTIONS.
- JOINTS BETWEEN STONES SHALL BE MORTARED.