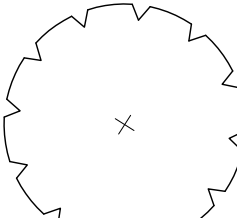

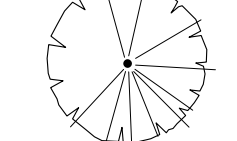


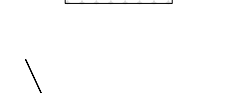
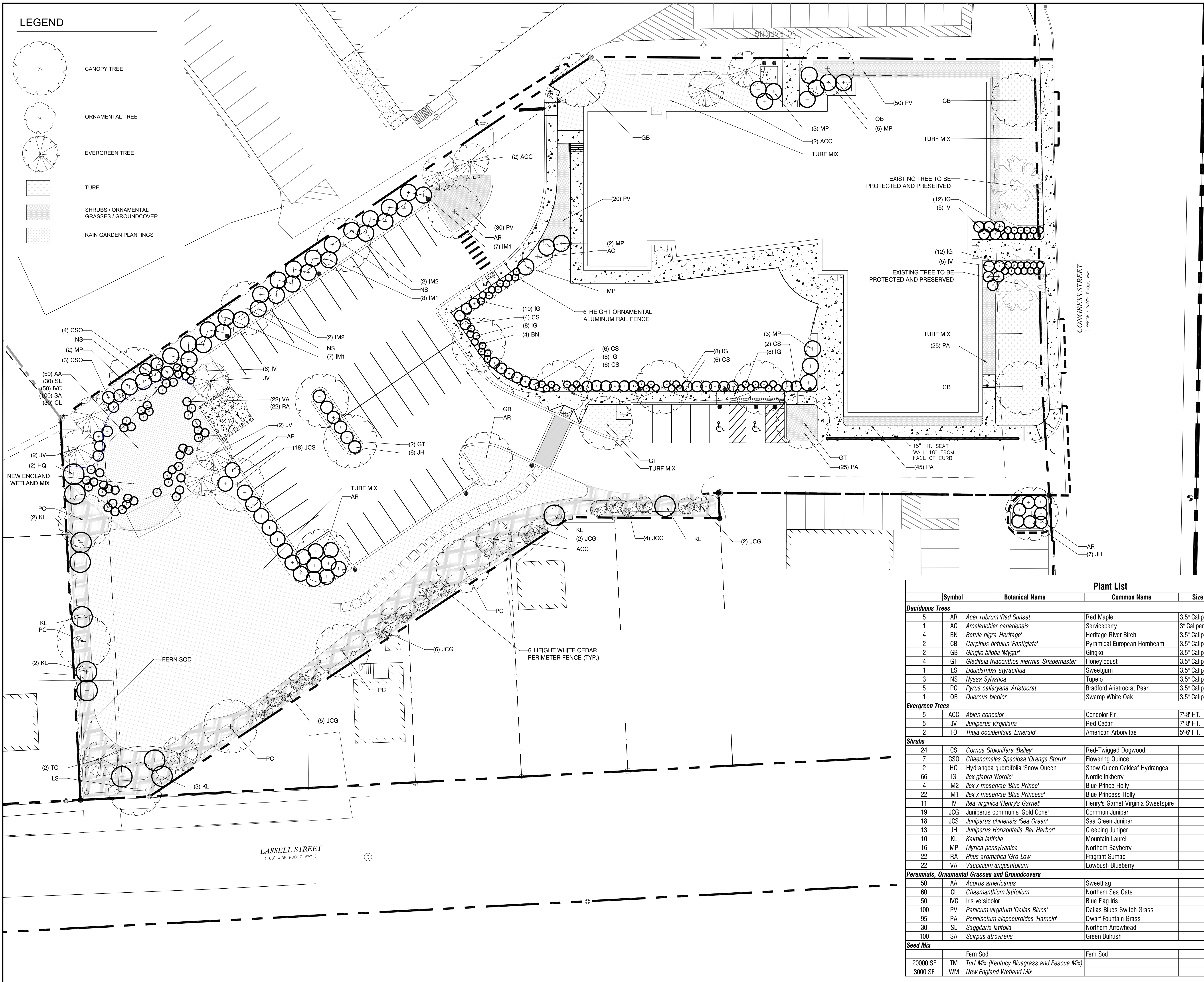


LEGEND

-  CANOPY TREE
-  ORNAMENTAL TREE
-  EVERGREEN TREE
-  TURF
-  SHRUBS / ORNAMENTAL GRASSES / GROUND COVER
-  RAIN GARDEN PLANTINGS



Plant List					
Symbol	Botanical Name	Common Name	Size	Container	Comments
<b>Deciduous Trees</b>					
5	AR <i>Acer rubrum</i> 'Red Sunset'	Red Maple	3.5" Caliper	B&B	
1	AC <i>Amelanchier canadensis</i>	Serviceberry	3" Caliper	B&B	
4	BN <i>Betula nigra</i> 'Heritage'	Heritage River Birch	3.5" Caliper	B&B	Single Stem
2	CB <i>Carpinus betulus</i> 'Fastigiata'	Pyramidal European Hornbeam	3.5" Caliper	B&B	
2	GB <i>Ginkgo biloba</i> 'Myra'	Ginkgo	3.5" Caliper	B&B	
4	GT <i>Gleditsia triacanthos inermis</i> 'Shademaster'	Honeylocust	3.5" Caliper	B&B	
1	LS <i>Liquidambar styraciflua</i>	Sweetgum	3.5" Caliper	B&B	
3	NS <i>Nyssa sylvatica</i>	Tupelo	3.5" Caliper	B&B	
5	PC <i>Pyrus calleryana</i> 'Aristocrat'	Bradford Aristocrat Pear	3.5" Caliper	B&B	
1	QB <i>Quercus bicolor</i>	Swamp White Oak	3.5" Caliper	B&B	
<b>Evergreen Trees</b>					
5	ACC <i>Abies concolor</i>	Concolor Fir	7'-8' HT.	B&B	
5	JV <i>Juniperus virginiana</i>	Red Cedar	7'-8' HT.	B&B	
2	TO <i>Thuja occidentalis</i> 'Emerald'	American Arborvitae	5'-6' HT.	B&B	
<b>Shrubs</b>					
24	CS <i>Cornus stolonifera</i> 'Bailey'	Red-Twigged Dogwood		CONT.	
7	CSO <i>Chaenomeles speciosa</i> 'Orange Storm'	Flowering Quince		CONT.	
2	HQ <i>Hydrangea quercifolia</i> 'Snow Queen'	Snow Queen Oakleaf Hydrangea		CONT.	
66	IG <i>Ilex glabra</i> 'Nordic'	Nordic Inkberry		CONT.	
4	IM2 <i>Ilex x meservae</i> 'Blue Prince'	Blue Prince Holly		CONT.	
22	IM1 <i>Ilex x meservae</i> 'Blue Princess'	Blue Princess Holly		CONT.	
11	IV <i>Itea virginica</i> 'Henry's Garnet'	Henry's Garnet Virginia Sweetspire		CONT.	
19	JCG <i>Juniperus communis</i> 'Gold Cone'	Common Juniper		CONT.	
18	JCS <i>Juniperus chinensis</i> 'Sea Green'	Sea Green Juniper		CONT.	
13	JH <i>Juniperus horizontalis</i> 'Bar Harbor'	Creeping Juniper		CONT.	
10	KL <i>Kalmia latifolia</i>	Mountain Laurel		CONT.	
16	MP <i>Myrica pensylvanica</i>	Northern Bayberry		CONT.	
22	RA <i>Rhus aromatica</i> 'Gro-Low'	Fragrant Sumac		CONT.	
22	VA <i>Vaccinium angustifolium</i>	Lowbush Blueberry		CONT.	Underdrained Soil Filter
<b>Perennials, Ornamental Grasses and Groundcovers</b>					
50	AA <i>Acorus americanus</i>	Sweetflag		2" Plug	Underdrained Soil Filter
60	CL <i>Chasmanthium latifolium</i>	Northern Sea Oats		#1 Pot	Underdrained Soil Filter
50	IVC <i>Iris versicolor</i>	Blue Flag Iris		2" Plug	Underdrained Soil Filter
100	PV <i>Panicum virgatum</i> 'Dallas Blues'	Dallas Blues Switch Grass		2 Gal.	
95	PA <i>Pennisetum alopecuroides</i> 'Hamel'	Dwarf Fountain Grass		2 Gal.	
30	SL <i>Sagittaria latifolia</i>	Northern Arrowhead		2" Plug	Underdrained Soil Filter
100	SA <i>Scirpus atrovirens</i>	Green Bulrush		2" Plug	Underdrained Soil Filter
<b>Seed Mix</b>					
		Fern Sod			
20000 SF	TM	Turf Mix (Kentucky Bluegrass and Fescue Mix)			Turf Areas
3000 SF	WM	New England Wetland Mix			Underdrained Soil Filter

Jewish Community Alliance of Southern Maine

Proposed Neighborhood Center

Portland, Maine

PROJECT NO: J-0096  
FILE:  
DRAWN BY: ARW  
CHECKED: JF  
APPROVED BY:

LANDSCAPE PLAN

SCALE: 1" = 20'-0"