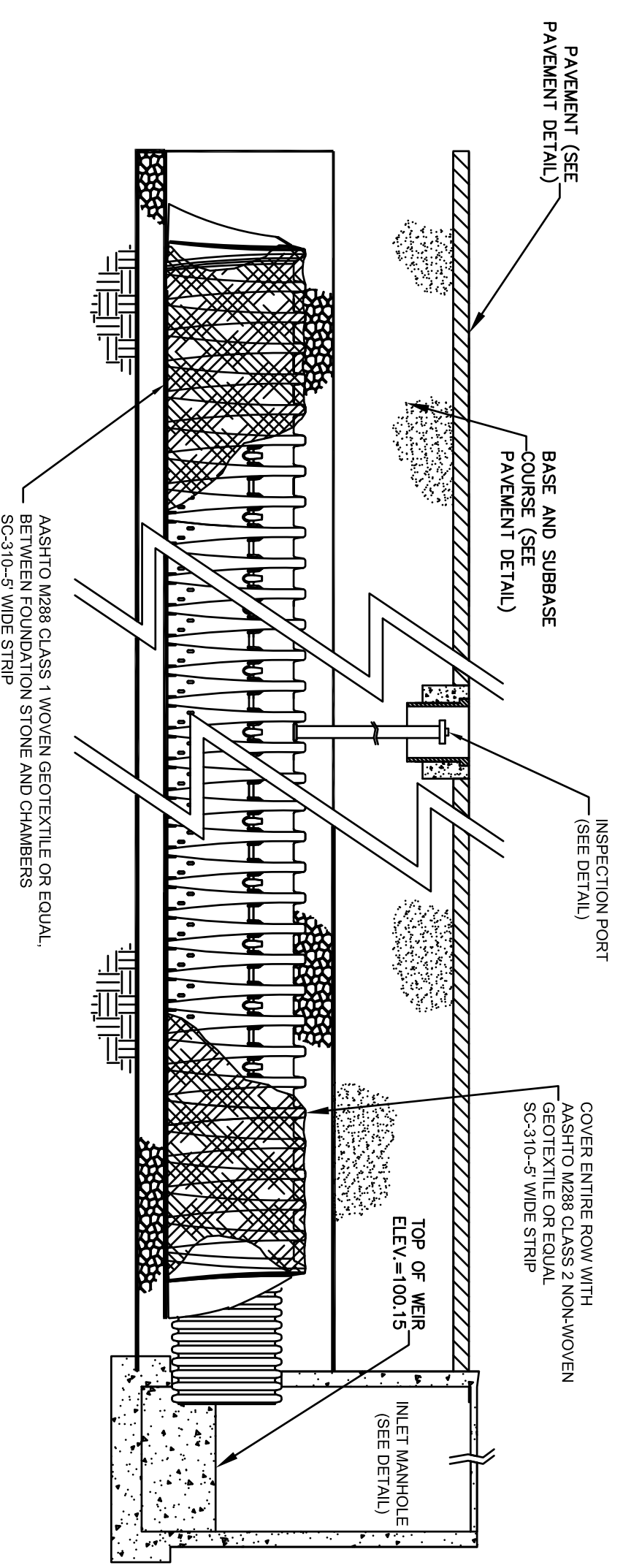
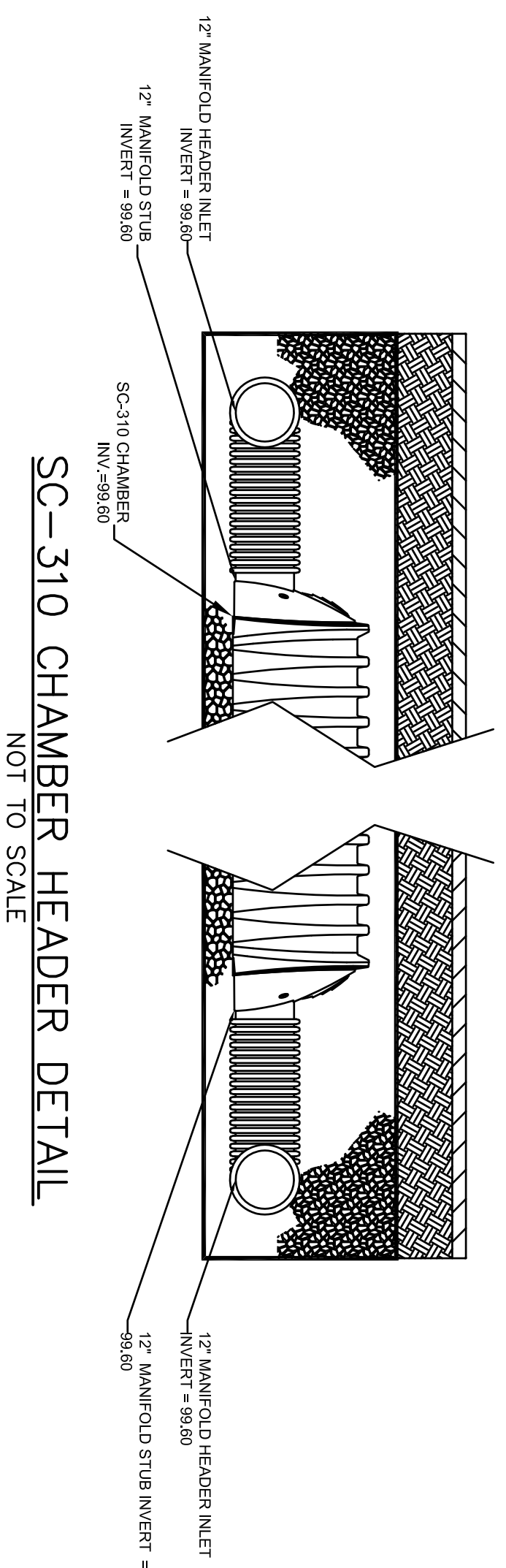


- NOTES:**
1. SC-310 CHAMBERS SHALL CONFORM TO THE REQUIREMENTS OF ASTM F2418 "STANDARD SPECIFICATION FOR POLYPROPYLENE (PP) CORRUGATED WALL STORMWATER COLLECTION CHAMBERS", OR ASTM F2922 "STANDARD SPECIFICATION FOR POLYETHYLENE (PE) CORRUGATED WALL STORMWATER COLLECTION CHAMBERS".
 2. SC-310 CHAMBERS SHALL BE DESIGNED IN ACCORDANCE WITH ASTM F2287 "STANDARD PRACTICE FOR STRUCTURAL DESIGN OF THERMOPLASTIC CORRUGATED WALL STORMWATER COLLECTION CHAMBERS".
 3. "ACCEPTABLE FILL MATERIALS" TABLE ABOVE PROVIDES MATERIAL LOCATIONS, GRADATIONS, AND COMPACTION REQUIREMENTS FOR FOUNDATION, EMBANKMENT, AND FILL MATERIALS.
 4. THE "SITE DESIGN ENGINEER" REFERS TO THE ENGINEER RESPONSIBLE FOR THE DESIGN AND LAYOUT OF THE STORMTECH CHAMBERS FOR THIS PROJECT.
 5. THE SITE DESIGN ENGINEER IS RESPONSIBLE FOR ASSESSING THE BEARING RESISTANCE (ALLOWABLE BEARING CAPACITY) OF THE SUBGRADE SOILS AND THE DEPTH OF FOUNDATION STONE WITH CONSIDERATION FOR THE RANGE OF EXPECTED SOIL MOISTURE CONDITIONS.
 6. FEMETER STONE MUST BE EXTENDED HORIZONTALLY TO THE EXCAVATION WALL FOR BOTH VERTICAL AND SLOPED EXCAVATION WALLS.

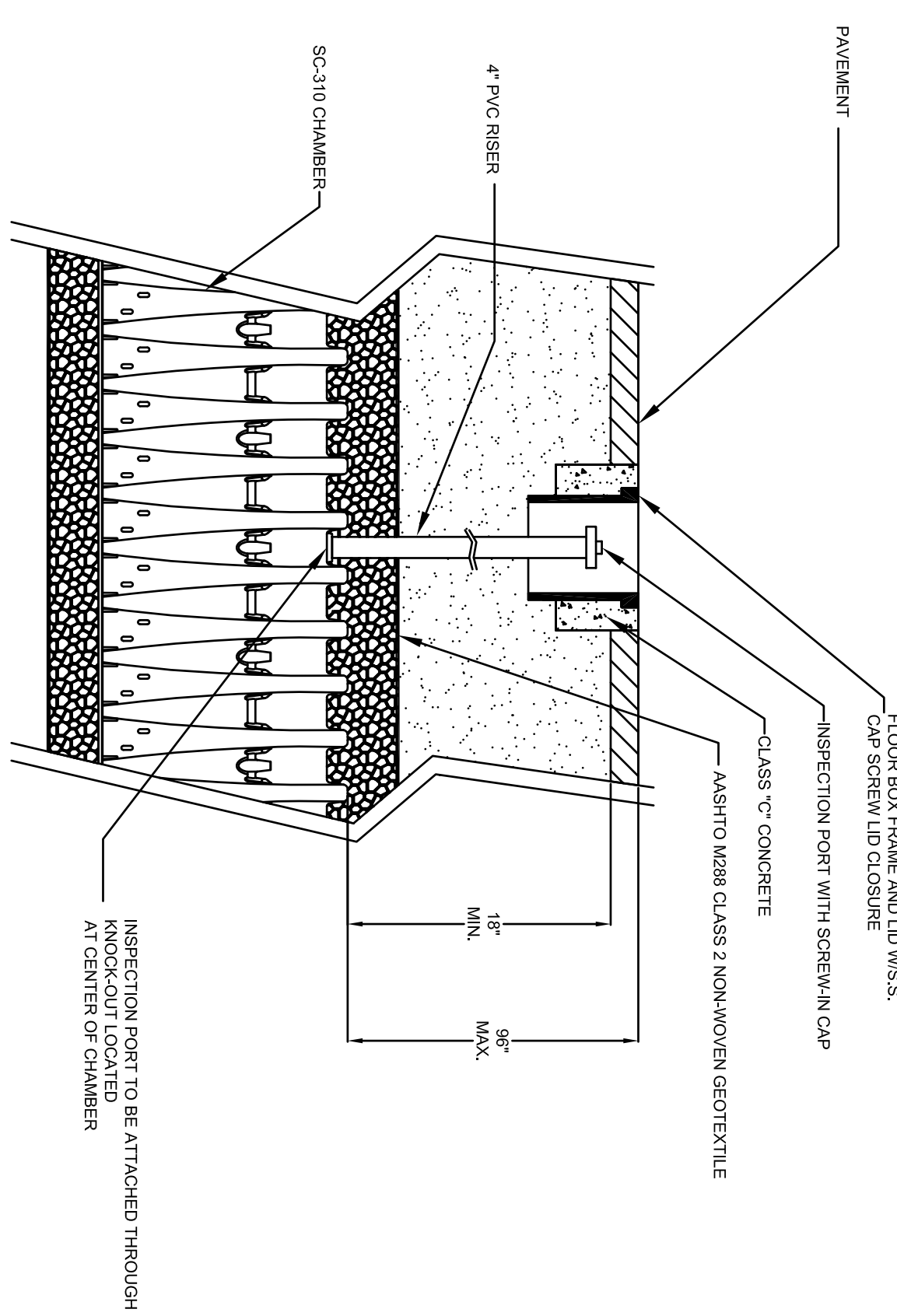
SC-310 CHAMBER SYSTEM CROSS-SECTION
 NOT TO SCALE



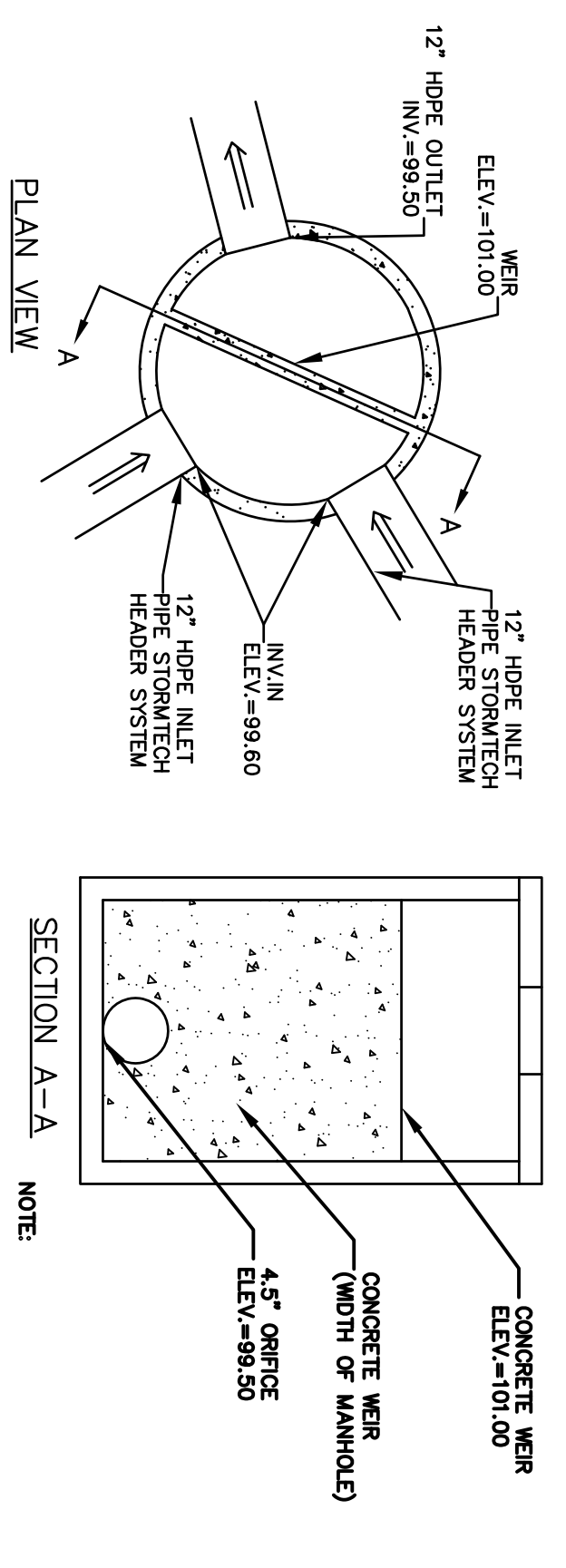
SC-310 ISOLATOR ROW DETAIL
 NOT TO SCALE



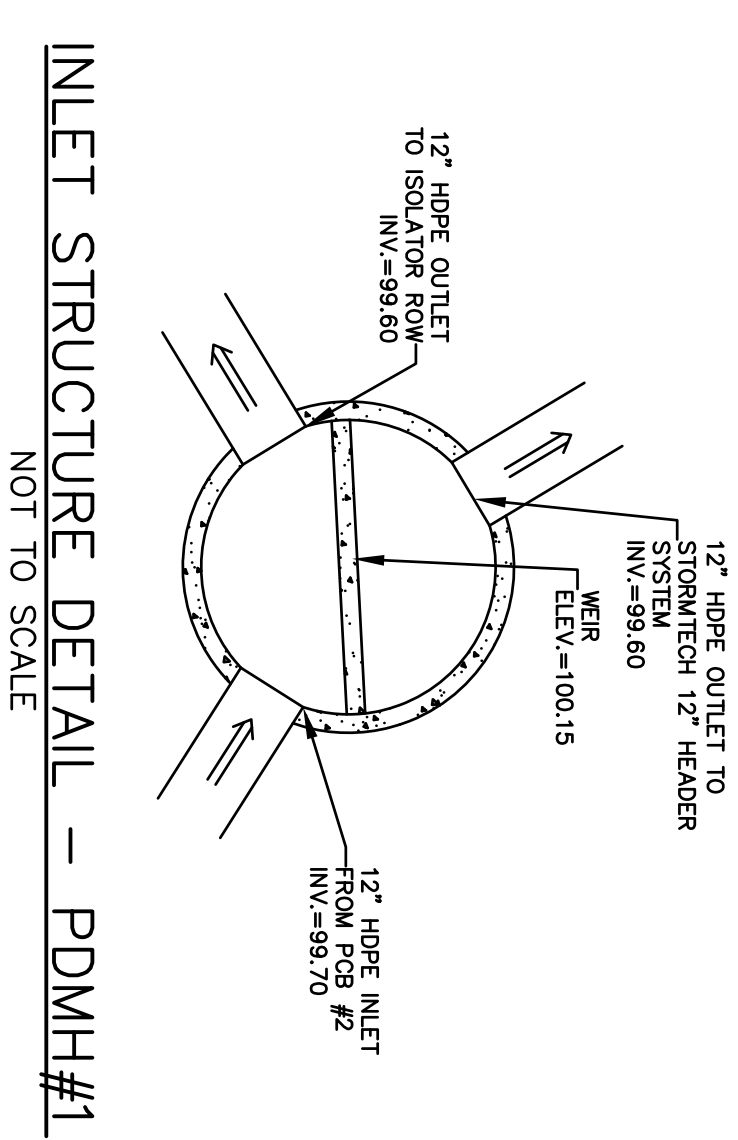
SC-310 CHAMBER HEADER DETAIL
 NOT TO SCALE



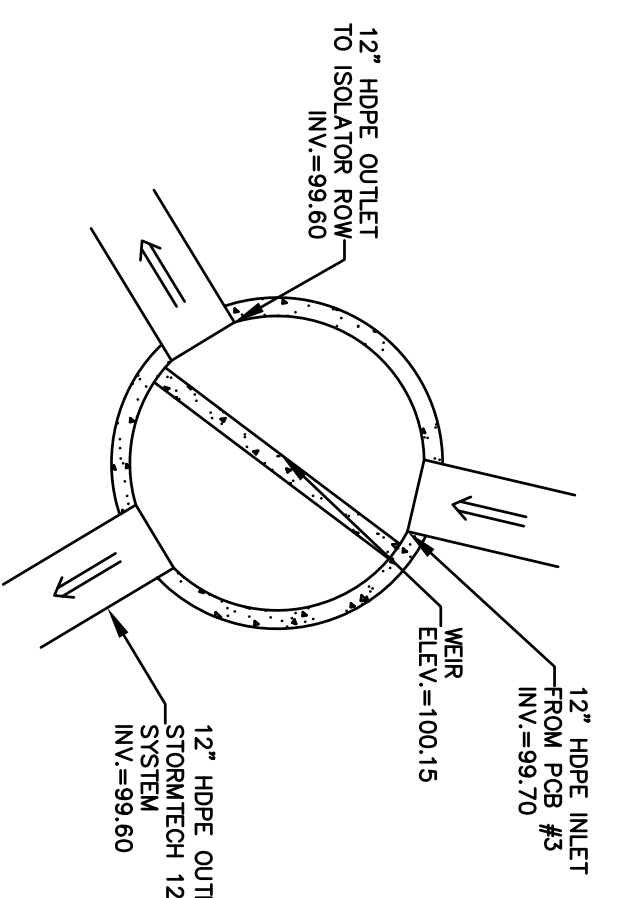
INSPECTION PORT DETAIL
 NOT TO SCALE



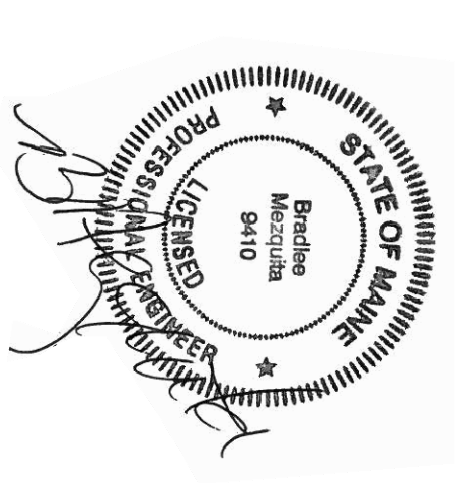
OUTLET STRUCTURE DETAIL - PDMH#2
 NOT TO SCALE



INLET STRUCTURE DETAIL - PDMH#1
 NOT TO SCALE



INLET STRUCTURE DETAIL - PDMH#5
 NOT TO SCALE



Jewish Community Alliance of Southern Maine

Proposed Neighborhood Center
 Portland, Maine

May 8, 2015

SCALE:	AS SHOWN
C-9	