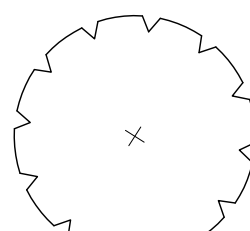
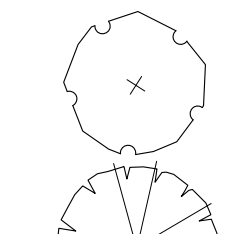
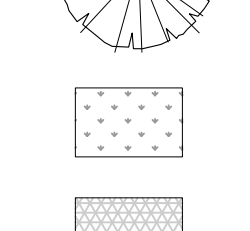
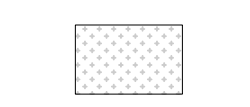


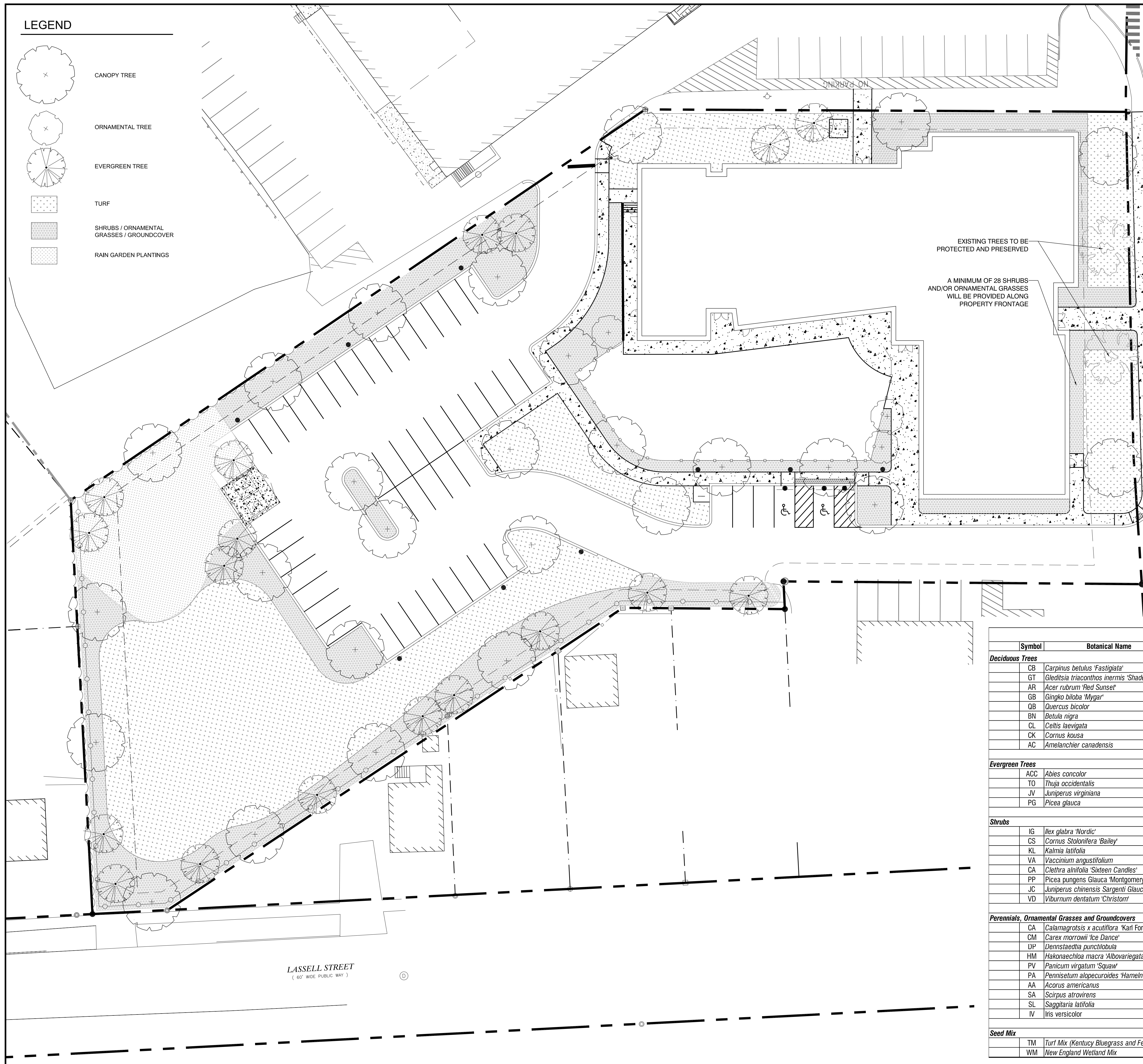


**LEGEND**

-  CANOPY TREE
-  ORNAMENTAL TREE
-  EVERGREEN TREE
-  TURF
-  SHRUBS / ORNAMENTAL GRASSES / GROUNDCOVER
-  RAIN GARDEN PLANTINGS



**LANDSCAPE REQUIREMENTS**

REMOVED TREES	14
REQUIRED REPLACEMENT TREES	*14 - 28
LINEAR FRONTAGE	204.89 FT
REQUIRED SHRUBS AT FRONT	28
PARKING SPACES	50
REQUIRED TREES AT PARKING AREA	10
REQUIRED SHRUBS AT PARKING AREA	30
PROVIDED TREES	47
PROVIDED SHRUBS AT FRONT	28+
TOTAL PROVIDED SHRUBS	50+

\*FINAL NUMBER OF REQUIRED REPLACEMENT TREES WILL DEPEND UPON THE CALIPER DBH OF THE REMOVED TREES AS OUTLINED IN SECTION 14-526 OF THE CITY OF PORTLAND CODE OF ORDINANCES.

170 MILK STREET, SUITE 5  
BOSTON, MA 02109  
P 617.426.5050 F 617.426.5051  
ceclgroup.com

**Jewish  
Community  
Alliance of  
Southern Maine**

Proposed  
Neighborhood  
Center

Portland, Maine

Plant List						
Symbol	Botanical Name	Common Name	Size	Container	Comments	
<b>Deciduous Trees</b>						
CB	<i>Carpinus betulus</i> 'Fastigiata'	Pyramidal European Hornbeam	3.5" Caliper	B&B		
GT	<i>Gleditsia triacanthos inermis</i> 'Shademaster'	Honeylocust	3.5" Caliper	B&B		
AR	<i>Acer rubrum</i> 'Red Sunset'	Red Maple	3.5" Caliper	B&B		
GB	<i>Ginkgo biloba</i> 'Mygar'	Ginkgo	3.5" Caliper	B&B		
QB	<i>Quercus bicolor</i>	Swamp White Oak	3.5" Caliper	B&B		
BN	<i>Betula nigra</i>	River Birch	3.5" Caliper	B&B		
CL	<i>Celtis laevigata</i>	Caevigata	3.5" Caliper	B&B		
CK	<i>Cornus kousa</i>	Kousa Dogwood	3" Caliper	B&B		
AC	<i>Amelanchier canadensis</i>	Serviceberry	3" Caliper	B&B		
<b>Evergreen Trees</b>						
ACC	<i>Abies concolor</i>	Concolor Fir	7'-8' HT.	B&B		
TO	<i>Thuja occidentalis</i>	White Cedar	6'-7' HT.	B&B		
JV	<i>Juniperus virginiana</i>	Red Cedar	7'-8' HT.	B&B		
PG	<i>Picea glauca</i>	White Spruce	7'-8' HT.	B&B		
<b>Shrubs</b>						
IG	<i>Ilex glabra</i> 'Nordic'	Nordic Inkberry	18"-24" HT.	CONT.		
CS	<i>Cornus stolonifera</i> 'Bailey'	Red-Twigged Dogwood	2 1/2' -3' HT.	CONT.		
KL	<i>Kalmia latifolia</i>	Mountain Laurel	3'-4' HT.	CONT.		
VA	<i>Vaccinium angustifolium</i>	Lowbush Blueberry	18"-24"	CONT.		Rain Garden
CA	<i>Clethra alnifolia</i> 'Sixteen Candles'	Dwarf Summersweet	2 1/2'-3' HT.	CONT.		
PP	<i>Picea pungens</i> 'Glauca 'Montgomery'	Montgomery Blue Spruce	2 1/2' -3' HT.	CONT.		
JC	<i>Juniperus chinensis</i> 'Sargentii Glauca'	Blue Sargent Juniper	18" - 24" HT	CONT.		
VD	<i>Viburnum dentatum</i> 'Christoni'	Blue Muffin Arrowwood	3 gal	CONT.		
<b>Perennials, Ornamental Grasses and Groundcovers</b>						
CA	<i>Calamagrostis x acutiflora</i> 'Karl Forester'	Karl Forester Reed Grass		#1 Pot		
CM	<i>Carex morrowii</i> 'Ice Dance'	Sedge		#1 Pot		
DP	<i>Dennstaedtia punctilobula</i>	Hay Scented Fern		15" U.C.		
HM	<i>Hakoneaechloa macra</i> 'Albovariegata'	Variegated Hakone Grass		#1 Pot		
PV	<i>Panicum virgatum</i> 'Squaw'	Squaw Switchgrass		2 Gal.		
PA	<i>Pennisetum alopecuroides</i> 'Hamelr'	Dwarf Fountain Grass		2 Gal.		
AA	<i>Acorus americanus</i>	Sweetflag		2" Plug		Rain Garden
SA	<i>Scirpus atrovirens</i>	Green Bulrush		2" Plug		Rain Garden
SL	<i>Sagittaria latifolia</i>	Northern Arrowhead		2" Plug		Rain Garden
IV	<i>Iris versicolor</i>	Blue Flag Iris		2" Plug		Rain Garden
<b>Seed Mix</b>						
TM	Turf Mix (Kentucky Bluegrass and Fescue Mix)					
WM	New England Wetland Mix					Rain Garden

04/03/15		
Mark	Date	Description
PROJECT NO:		J-0096
FILE:		
DRAWN BY:		ARW
CHECKED:		JF
APPROVED BY:		

**LANDSCAPE PLAN**

SCALE: 1" = 20'-0"