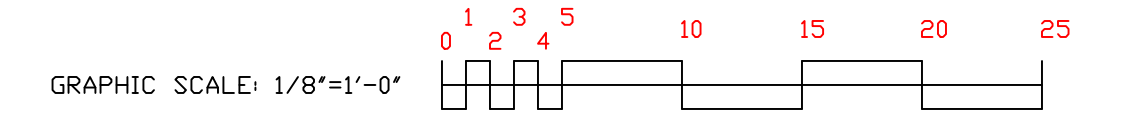


FLOOR PLAN
ELEV = 52'-0"
SCALE: 1/8"=1'-0"



HYDRAULIC DATA NAMEPLATE
This Building is protected by a hydraulically designed Automatic Sprinkler System

Location AREA-1
No. of Sprinkler 8
Basis of design
1. Density .10 gpm/ft²
2. Design area of discharge 900 sqft
System Demand
1. Water Flow Rate @ Base 169.07 gpm
2. Residual Pressure @ Base 58.218 psf
Cushion: 33.95 psf

HYDRAULIC DATA NAMEPLATE
This Building is protected by a hydraulically designed Automatic Sprinkler System

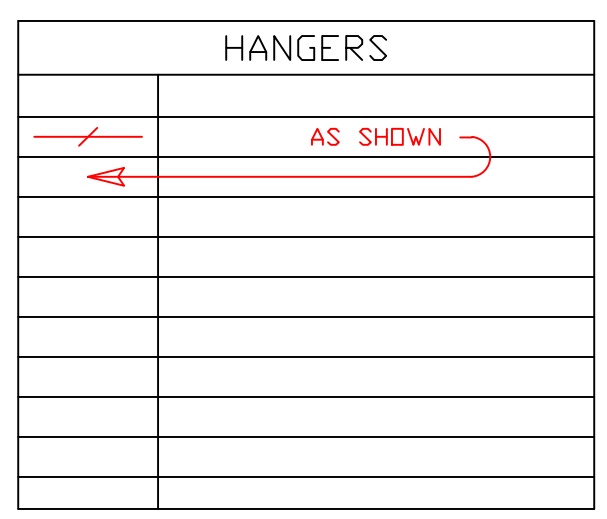
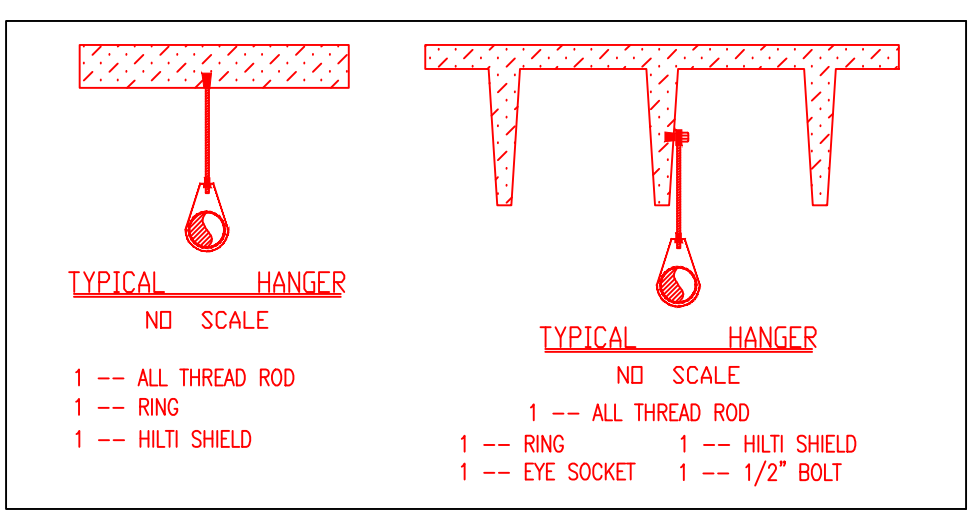
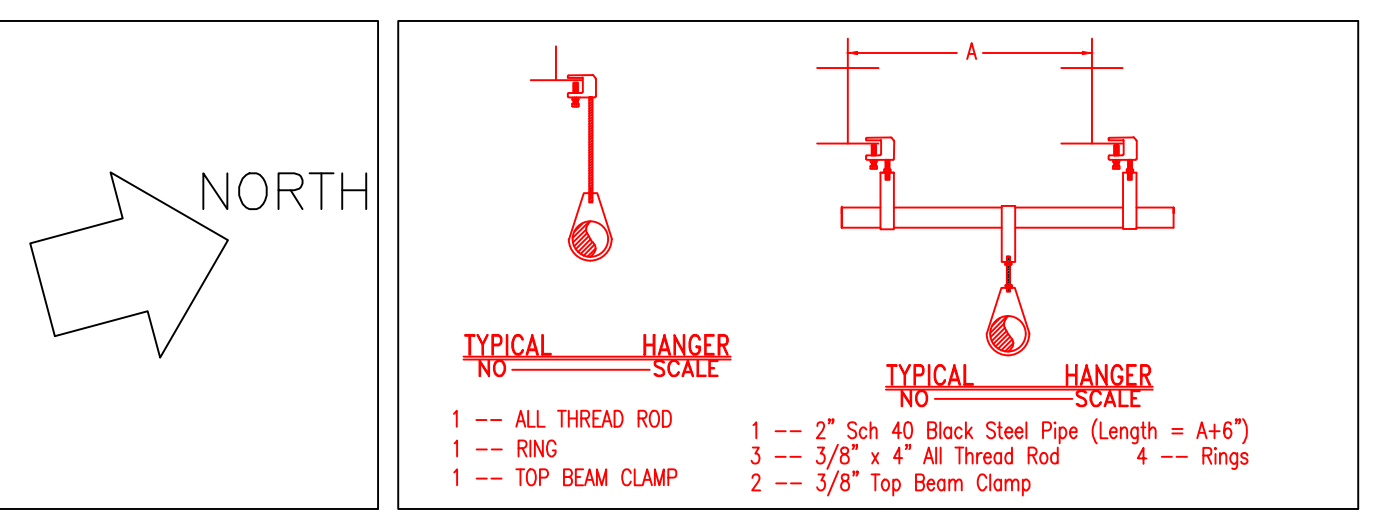
Location AREA-2
No. of Sprinkler 8
Basis of design
1. Density .10 gpm/ft²
2. Design area of discharge 1,500 sqft
System Demand
1. Water Flow Rate @ Base 178.61 gpm
2. Residual Pressure @ Base 49.380 psf
Cushion: 42.75 psf

HYDRAULIC DATA NAMEPLATE
This Building is protected by a hydraulically designed Automatic Sprinkler System

Location AREA-3
No. of Sprinkler 11
Basis of design
1. Density .10 gpm/ft²
2. Design area of discharge 900 sqft
System Demand
1. Water Flow Rate @ Base 237.86 gpm
2. Residual Pressure @ Base 60.936 psf
Cushion: 30.60 psf

HYDRAULIC DATA NAMEPLATE
This Building is protected by a hydraulically designed Automatic Sprinkler System

Location AREA-4
No. of Sprinkler 6
Basis of design
1. Density .10 gpm/ft²
2. Design area of discharge 900 sqft
System Demand
1. Water Flow Rate @ Base 121.75 gpm
2. Residual Pressure @ Base 60.019 psf
Cushion: 32.47 psf



ABBREVIATIONS

B Bottom of Beam
D Bottom of Deck
P Bottom of Pipe
N.V. Nipple and Cap
N.C. Not in Contact
N.T.S. Not to Scale
O.S. Open End Joist
P.R.V. Pressure Red Valve
R.M. Roof Manifold
S.S. Standpipe
T.O.B. Top of Beam
T.O.P. Top of Slab
T.O.S. Unless Otherwise Noted
C.L. Centerline
N.A.S. No Automatic Sprinklers
O.T.A. Open to Above

CONTRACT RESPONSIBILITIES

ITEM	FPC	OTHERS
STREET CONN.		
UGR MAIN		
EXCAVATION		
FLUSHING		
WIRING		
PAINTING		
TRAMP SYSTEMS		
FLOW SWITCHES		
STREET CONN.		

SPRINKLER HEAD LEGEND

#	SYMBOL	MAKE	MODEL	SIN	FINISH	TYPE	TEMP	NPT	DRIFICE	K-FACTOR	TOTAL	
1	○	RELIABLE	F1FR56	RA414	WHITE	RECESSED PENDENT	155° F	1/2"	1/2"	5.6	188	
2	○	RELIABLE	GS-56	RA3415	WHITE	CONCEALED PENDENT	155° F	1/2"	1/2"	5.6	27	
3	○	RELIABLE	F1FR56	RA425	WHITE	UPRIGHT	200° F	1/2"	1/2"	5.6	28	
4	○	RELIABLE	F1FR56	RA485	WHITE	VERTICAL SURFACE	200° F	1/2"	1/2"	5.6	3	
5	○	1 - TYPE #1 HEAD ON 3RD & 1 - TYPE #3 HEAD ON SPRIG-UP - TOTALS ARE IN RESPECTIVE HEAD COLUMN										
HEAD OF TYPE INDICATED ON A FLEX-HEAD ASSEMBLY - TOTALS ARE IN RESPECTIVE HEAD COLUMN												
											TOTAL	186

SUBMITTALS

SENT TO	DATE SENT MM/DD/YY	DATE RECEIVED
I S O		
F M		
L M		
I R I		
L A		
STATE FIRE		
LOCAL FIRE		
LOCAL WATER		
G. C.		

LICENSE # FSC93
R.M.S.# 442 PERMIT # FSPXXXX

P.O. BOX 1285
LEWISTON, MAINE
04243-1285

JEWISH COMMUNITY CENTER
1342/1348 CONGRESS ST
PORTLAND, MAINE

FLOOR PLAN AND DETAILS

CONTRACT WITH LEDGEWOOD CONSTRUCTION

SYSTEM TYPE	NO.	DATE	DESCRIPTION
WET			
DRY			
DELUGE			
PREACTION			
M.L. LIFE			

SCALE 1/8"=1'-0"

DRAWN BY ARS
CHECKED BY CDS
NICET III #78833

DATE 16 DEC 2016
TOTAL SPRKS ON JOB 186
SHEET# FP-1
JOB# 16-099