

SOUTH ELEVATION

1" = 1/16"

NOTE:  
Lettering to be satin finish metal.  
Sign will not be illuminated.



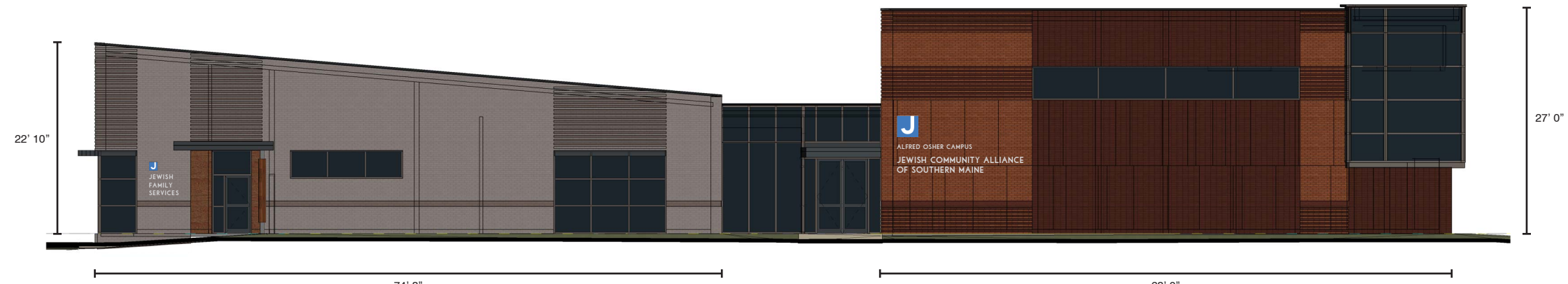
FACE AREA: 1,407 SF  
SIGN DIMENSIONS: 6'-3" x 1'-9"  
SIGN AREA: 11 SF (1%)

**SIGN 2**

NORTH ELEVATION

1" = 1/16"

NOTE:  
Lettering to be satin finish metal.  
Logos to be painted metal.  
Signs will not be illuminated.



FACE AREA: 1,477 SF  
SIGN DIMENSIONS: 3'-6" x 4'-0"  
SIGN AREA: 14 SF (1%)

**SIGN 4**

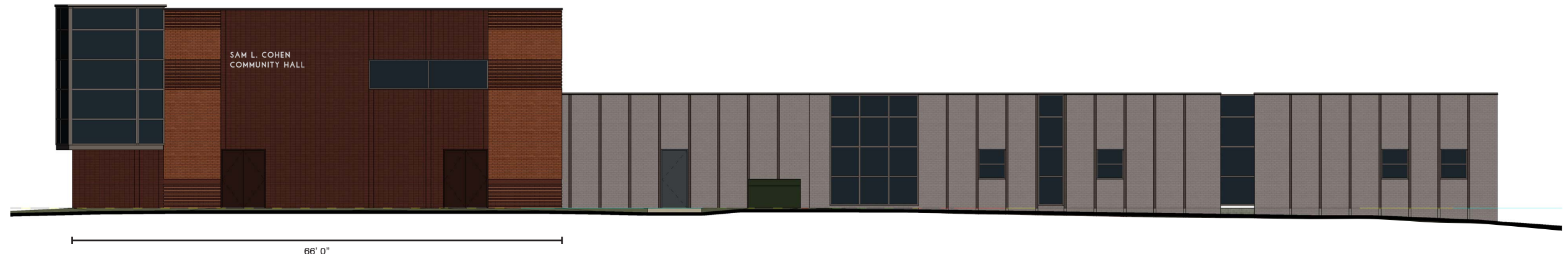
FACE AREA: 1,866 SF  
SIGN DIMENSIONS: 15'-0" x 6'-9"  
SIGN AREA: 101 SF (5%)

**SIGN 1**

WEST ELEVATION

1" = 1/16"

NOTE:  
Lettering to be satin finish metal.  
Sign will not be illuminated.



FACE AREA: 1,823 SF  
SIGN DIMENSIONS: 10'-0" x 2'-0"  
SIGN AREA: 20 SF (1%)

**SIGN 3**