



HARRIMAN

AUBURN PORTLAND MANCHESTER

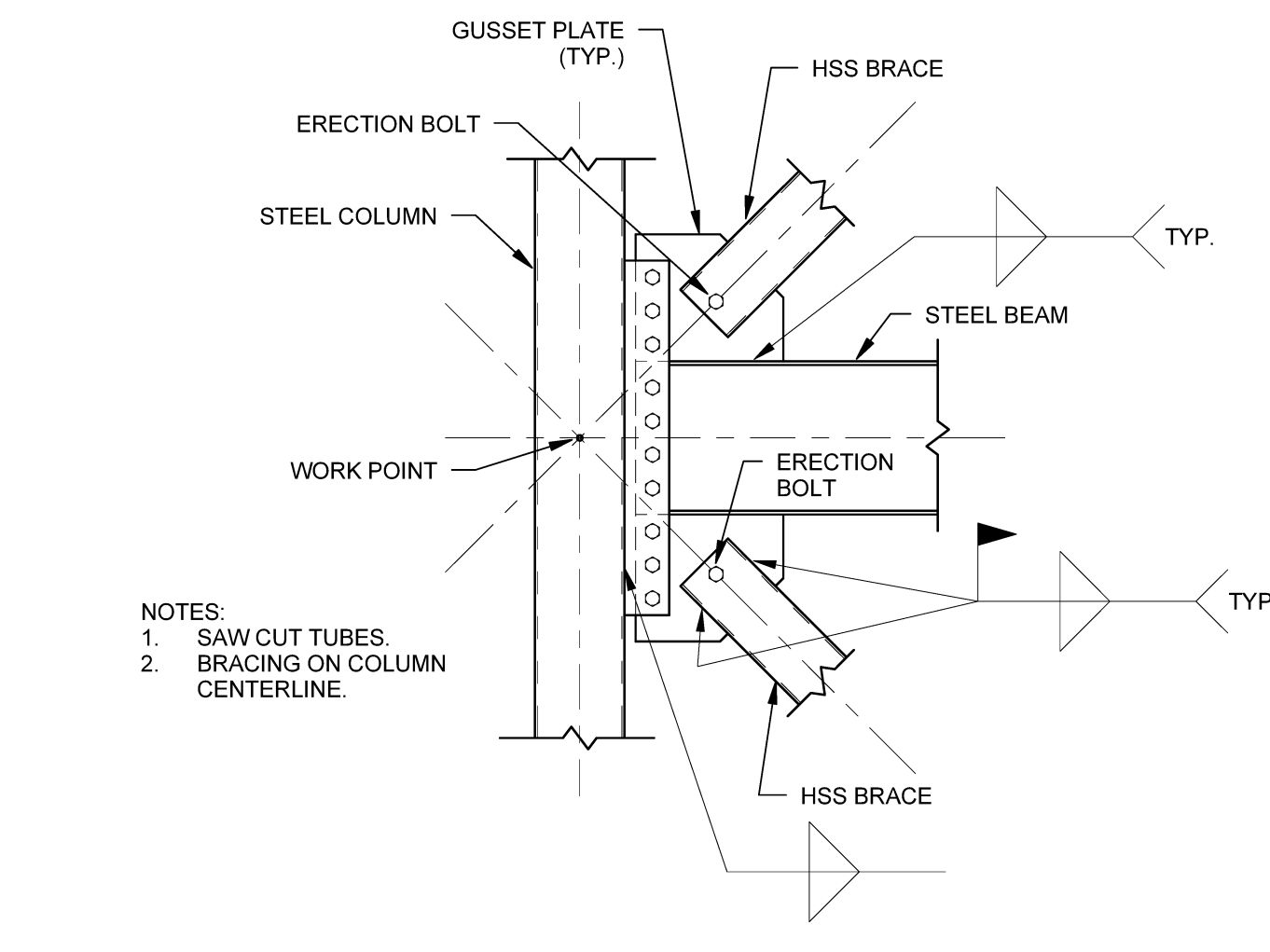
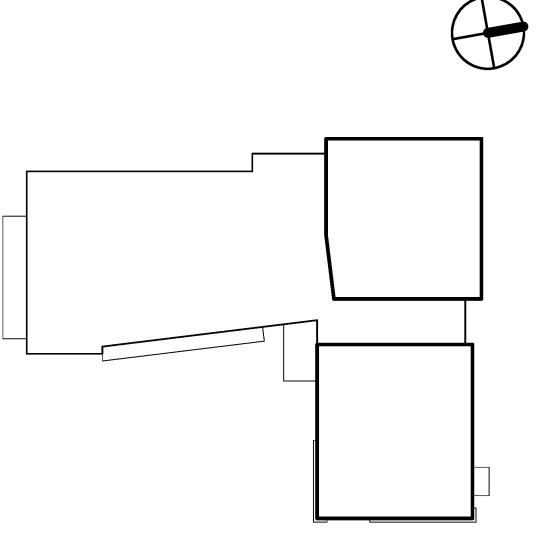
JEWISH COMMUNITY ALLIANCE OF SOUTHERN MAINE

PORTLAND, ME

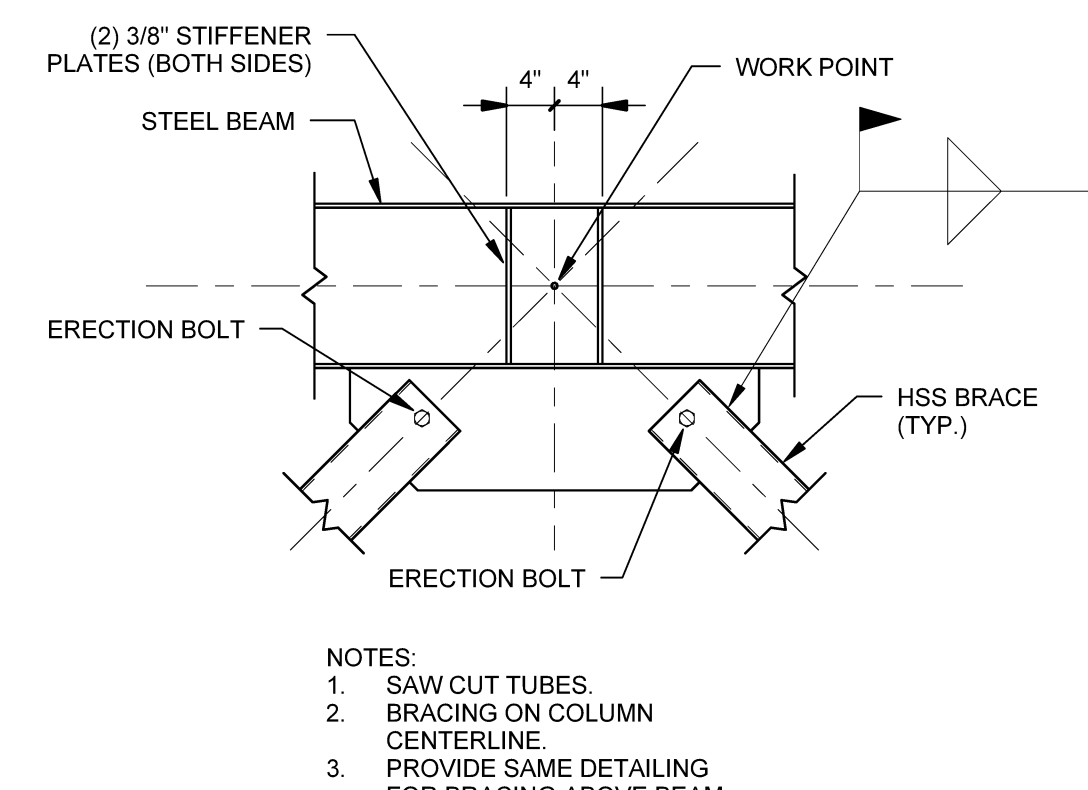
Harriman Project No. 15309

Key Plan

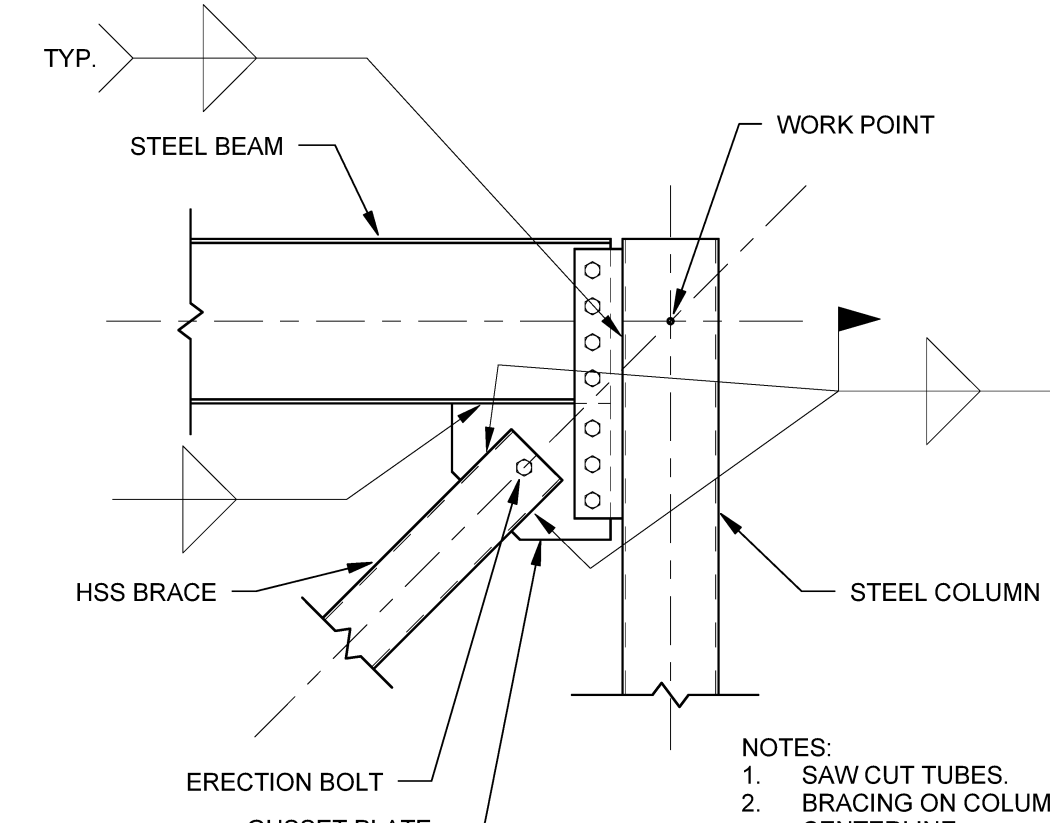
Proj North



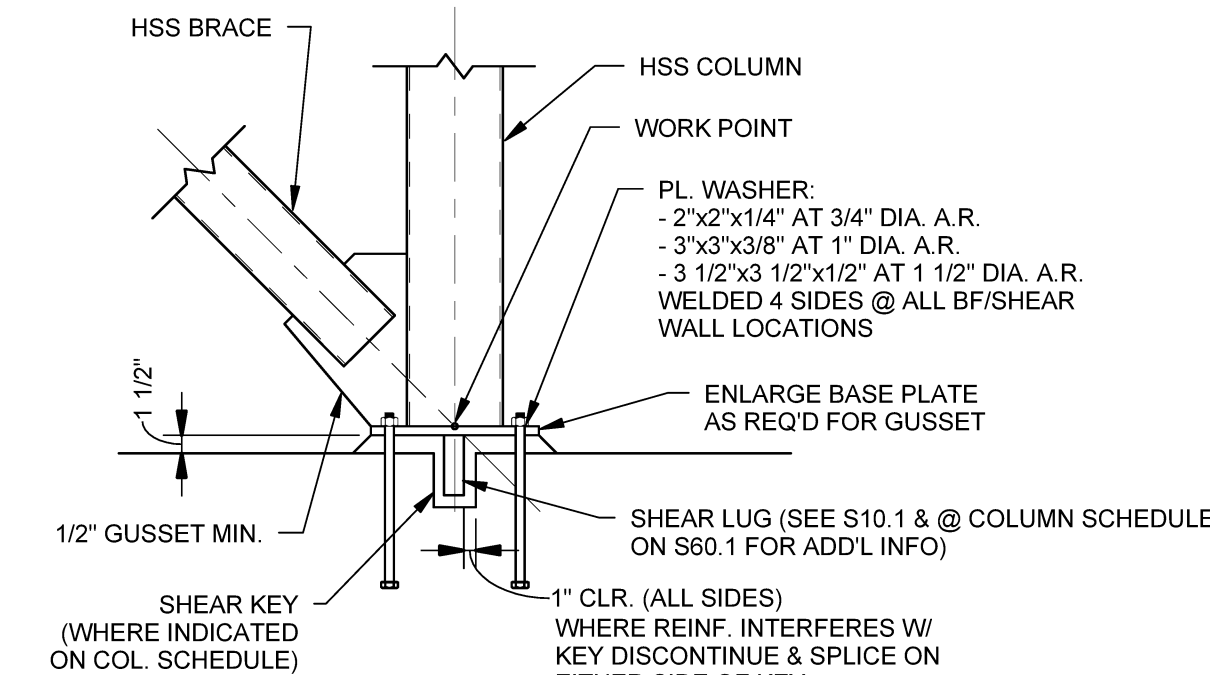
D1 TYP. BRACE DETAIL  
SCALE: 3/4" = 1'-0"



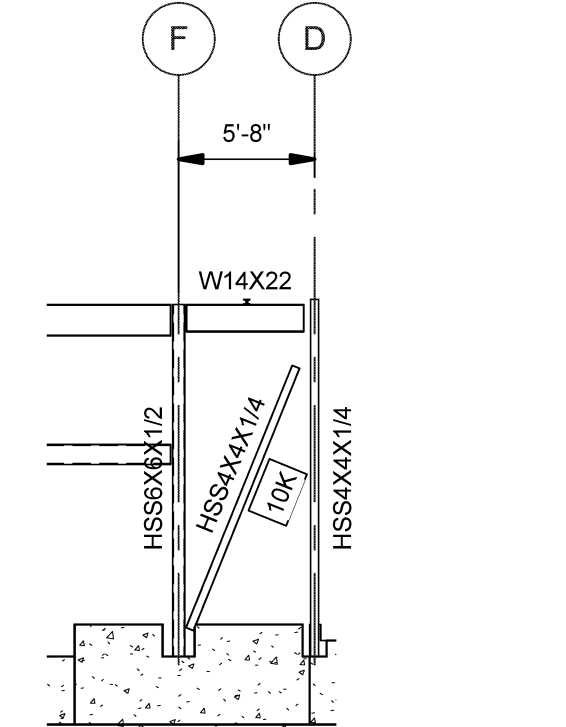
D2 TYP. BRACE DETAIL  
SCALE: 3/4" = 1'-0"



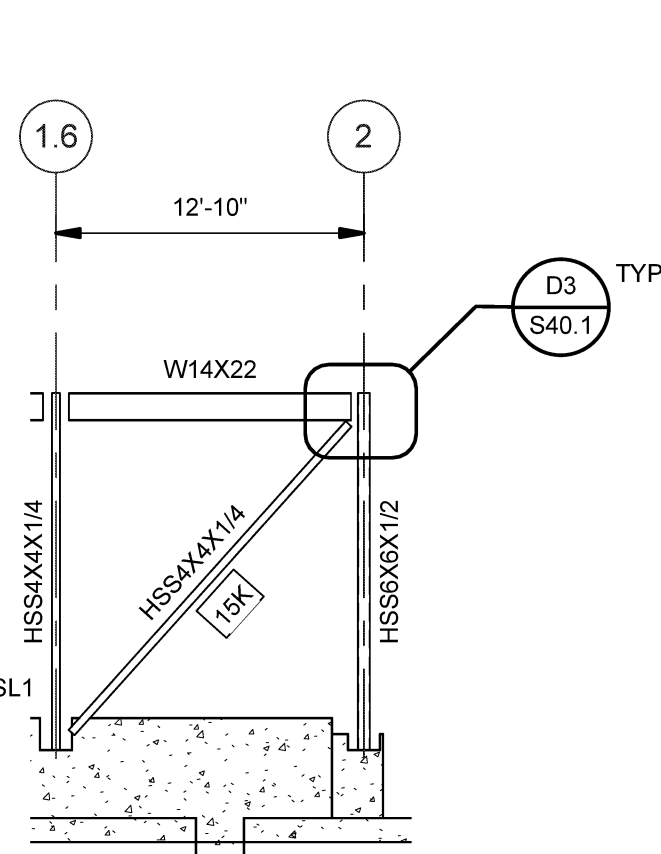
D3 TYP. BRACE DETAIL  
SCALE: 3/4" = 1'-0"



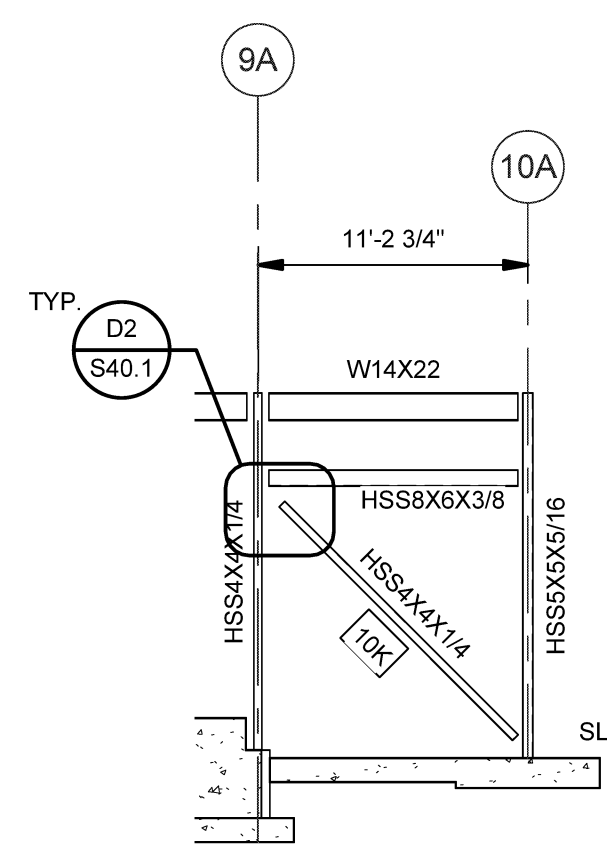
D5 TYP. COL. BASE DETAIL @ BRACE  
SCALE: 3/4" = 1'-0"



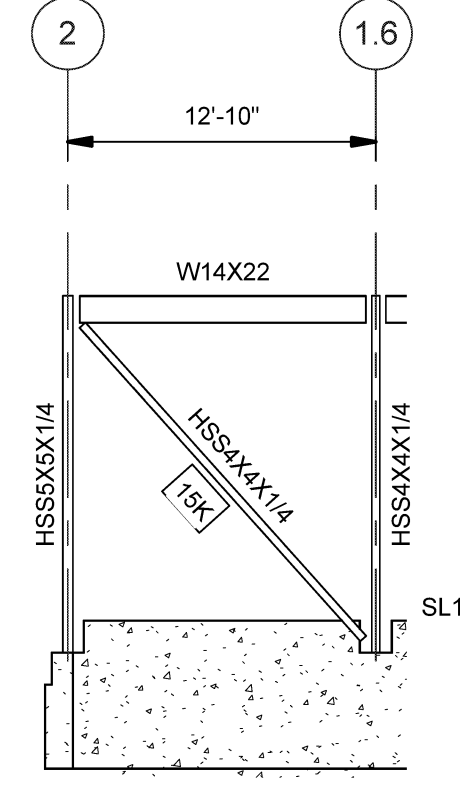
D6 BRACING ELEVATION - LINE 1  
SCALE: 1/8" = 1'-0"



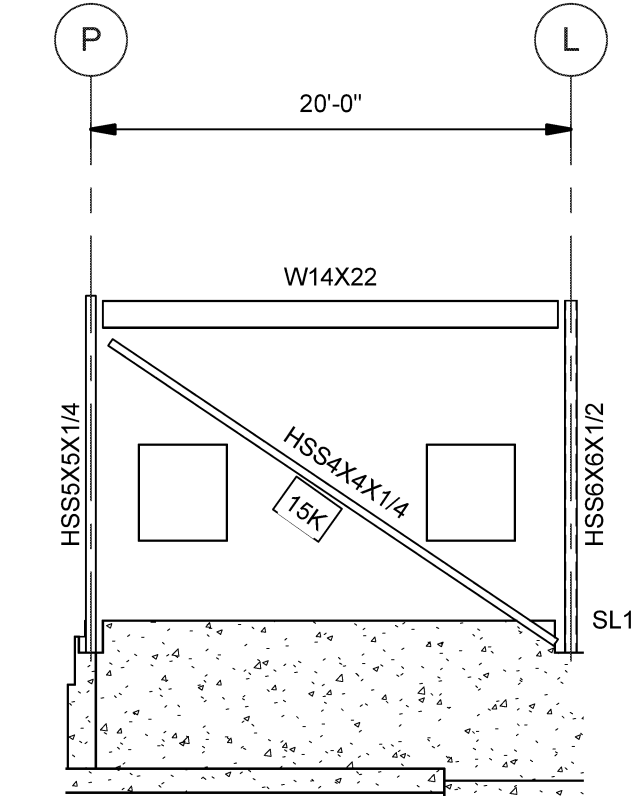
C1 BRACING ELEVATION - LINE D  
SCALE: 1/8" = 1'-0"



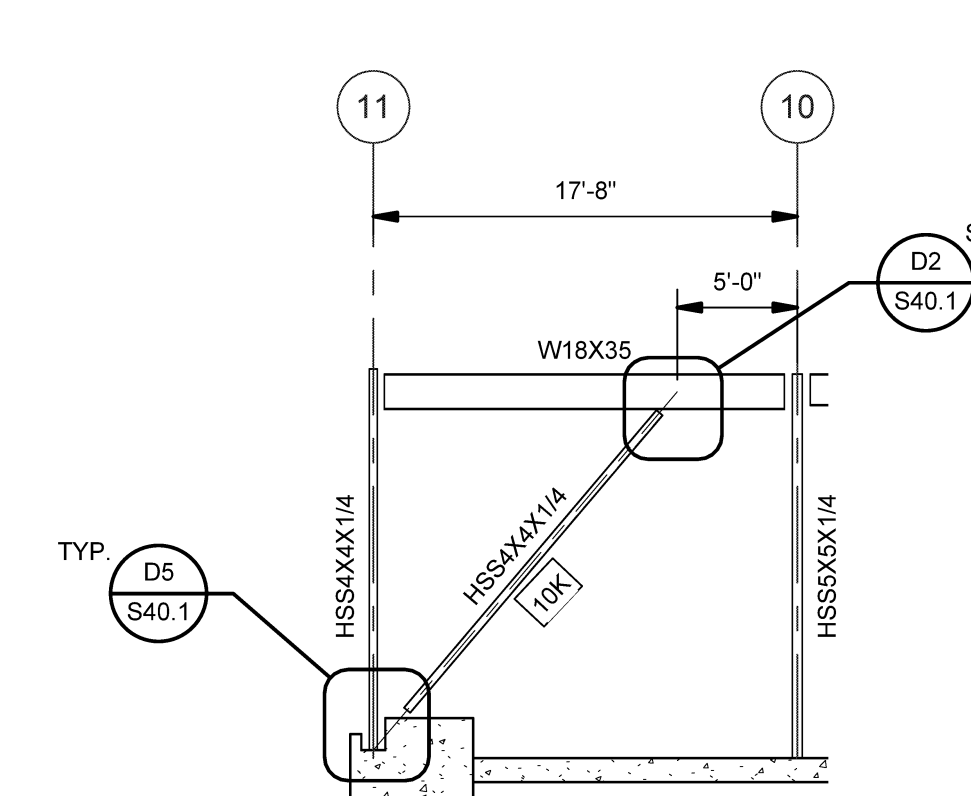
C2 BRACING ELEVATION - LINE BB  
SCALE: 1/8" = 1'-0"



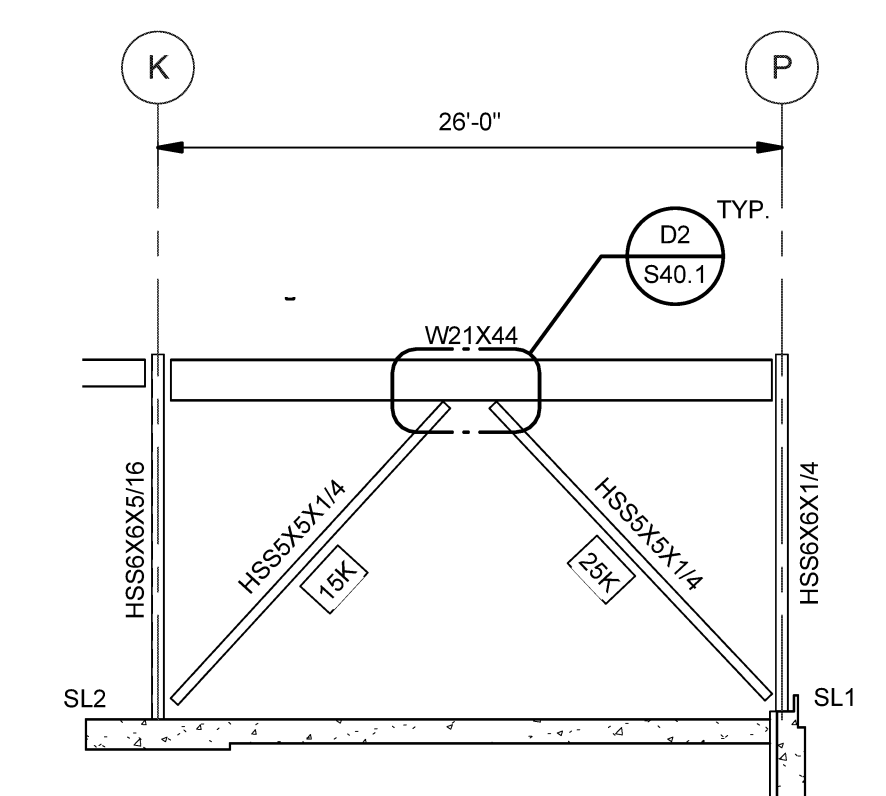
C3 BRACING ELEVATION - LINE P  
SCALE: 1/8" = 1'-0"



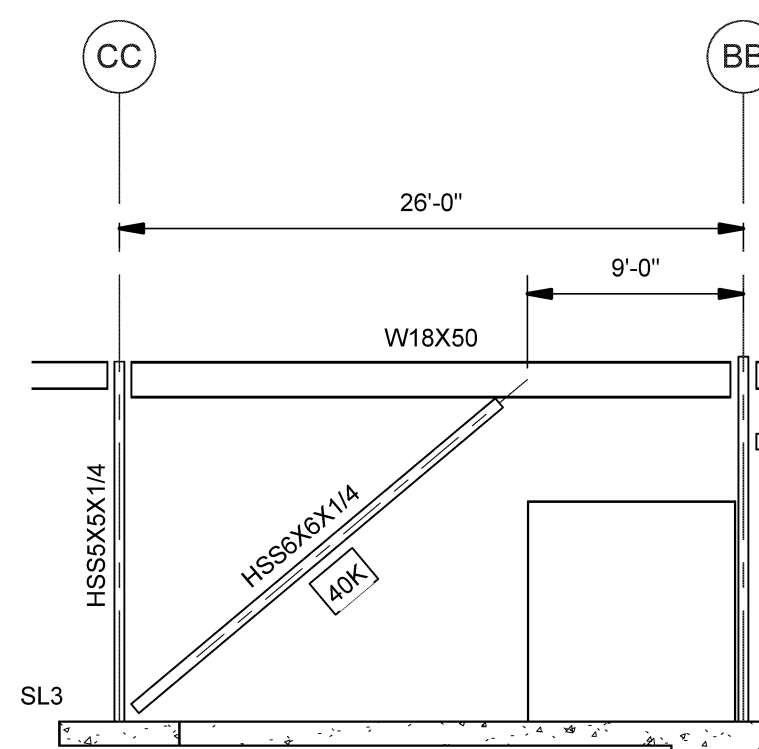
C4 BRACING ELEVATION - LINE 1  
SCALE: 1/8" = 1'-0"



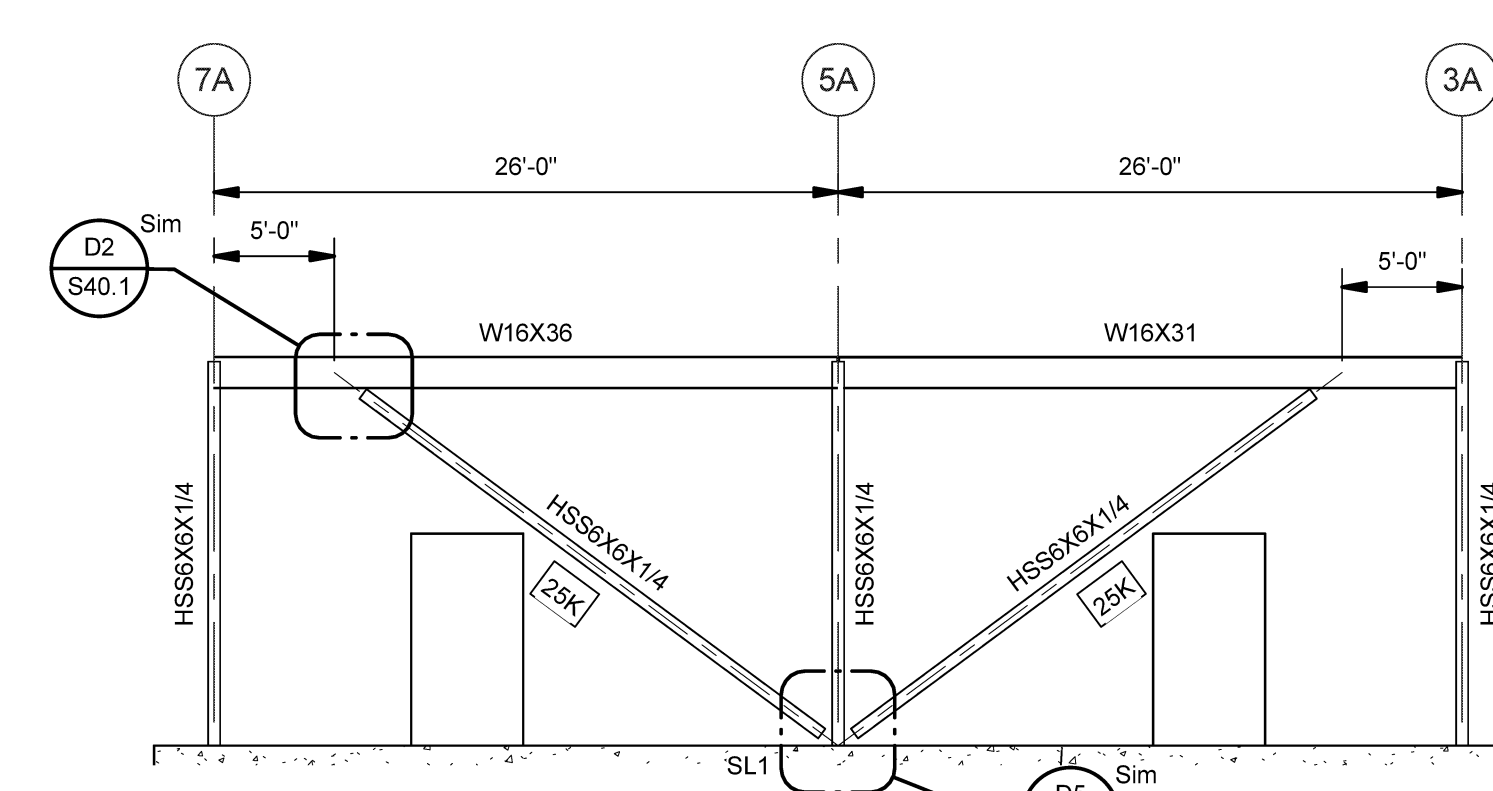
C5 BRACING ELEVATION - LINE E  
SCALE: 1/8" = 1'-0"



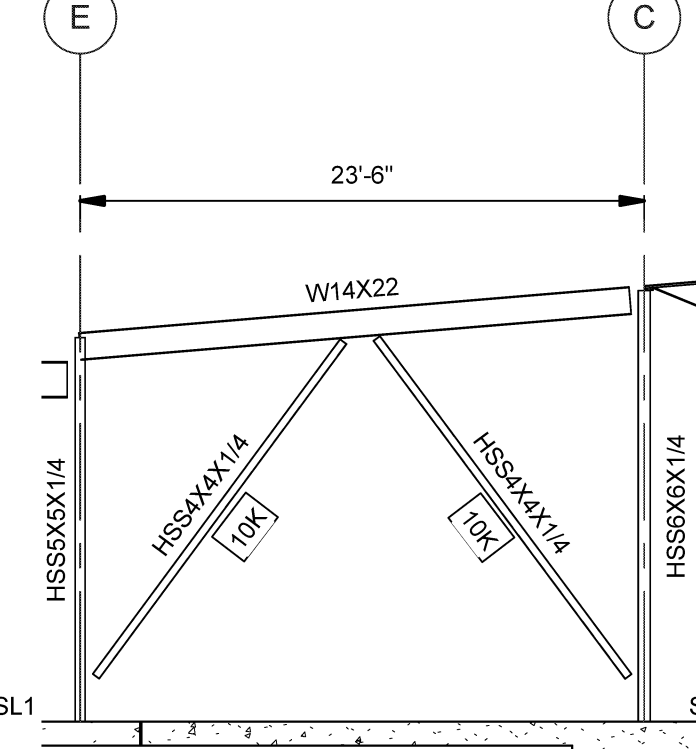
C6 BRACING ELEVATION - LINE 4  
SCALE: 1/8" = 1'-0"



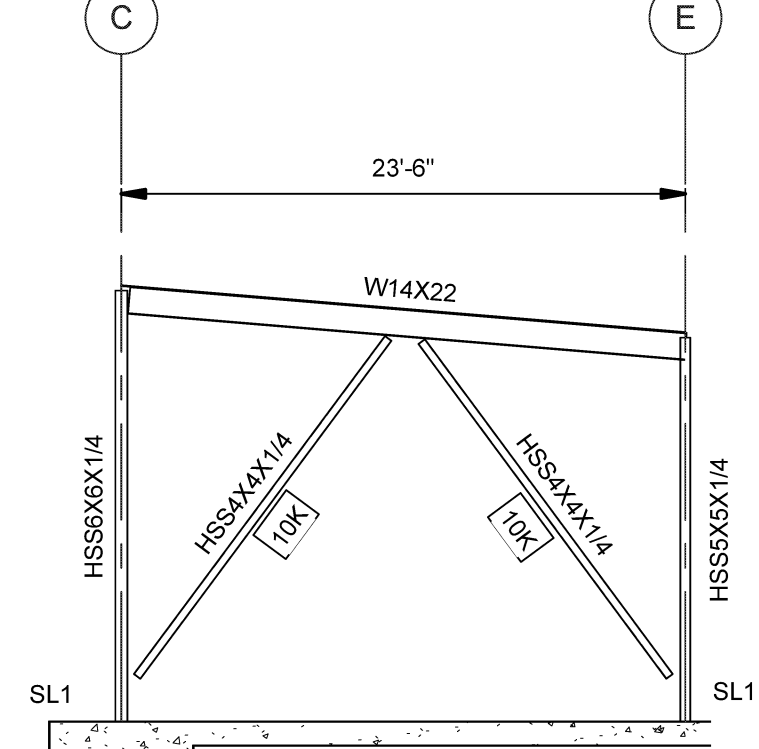
B1 BRACING ELEVATION - LINE 10A  
SCALE: 1/8" = 1'-0"



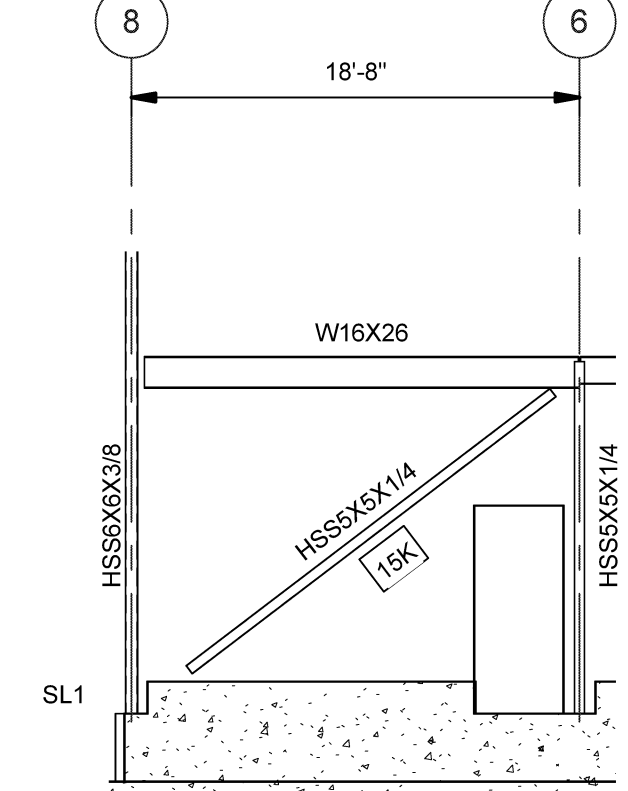
B2 BRACING ELEVATION - LINE DD  
SCALE: 1/8" = 1'-0"



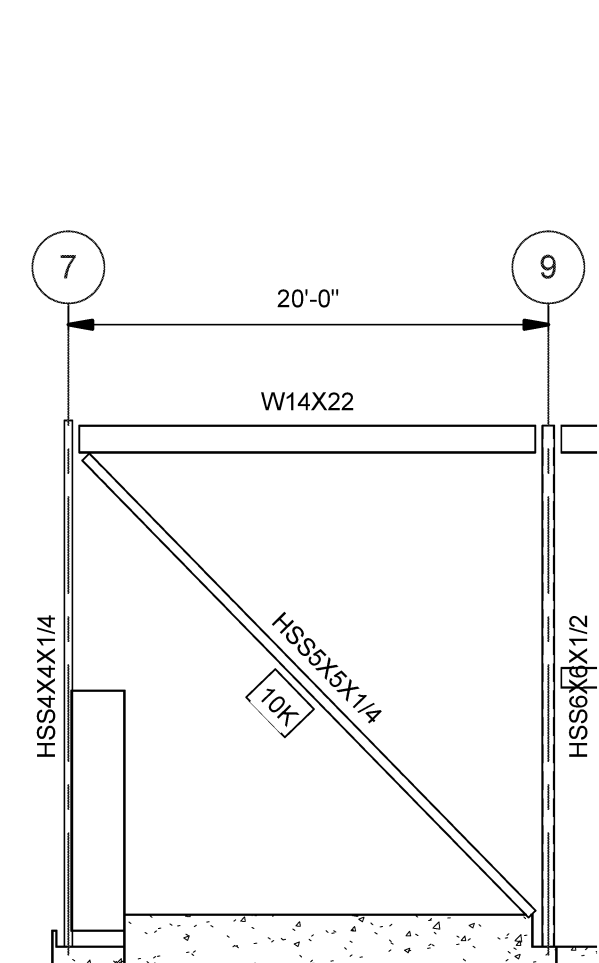
B4 BRACING ELEVATION - LINE 9  
SCALE: 1/8" = 1'-0"



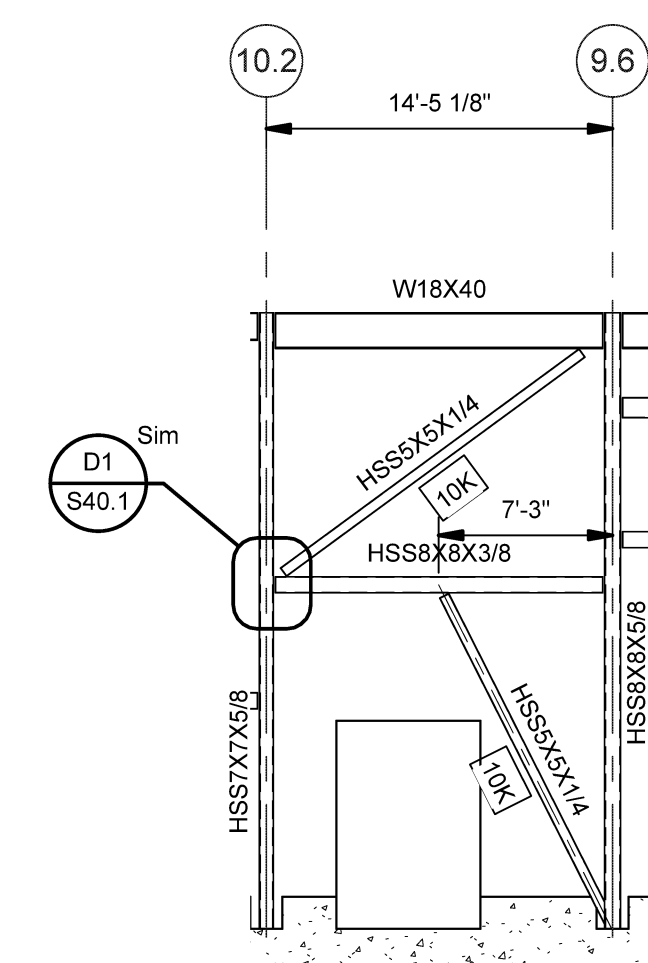
B5 BRACING ELEVATION - LINE 10  
SCALE: 1/8" = 1'-0"



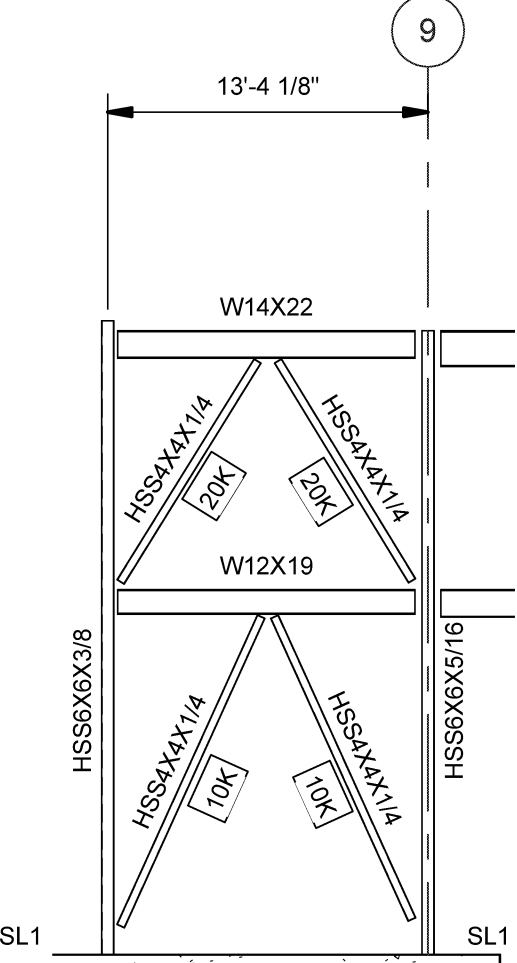
B6 BRACING ELEVATION - LINE Q  
SCALE: 1/8" = 1'-0"



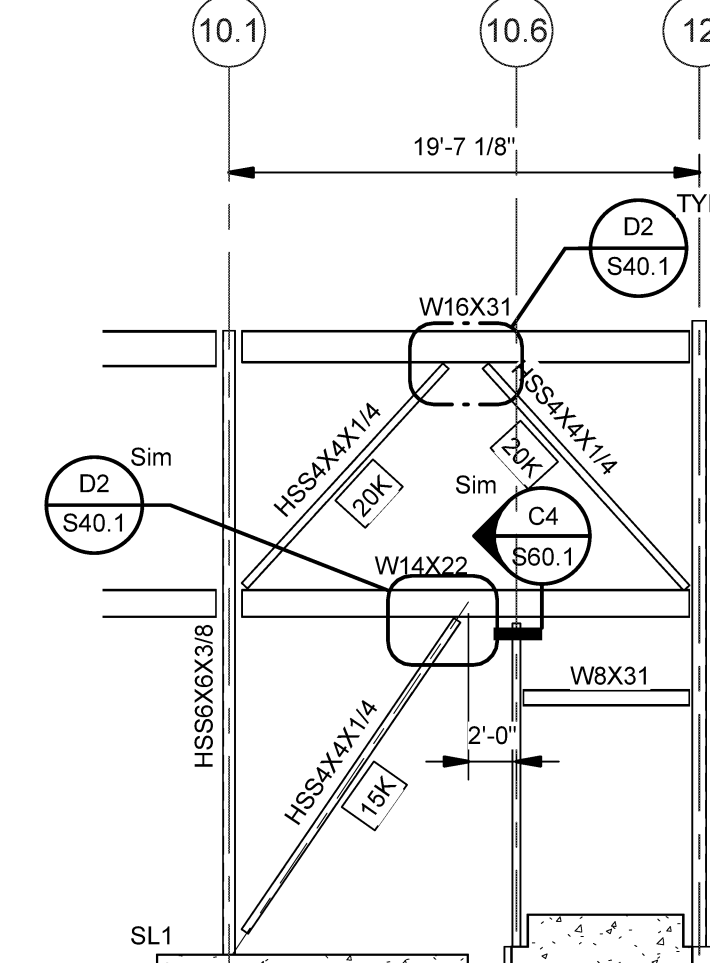
A1 BRACING ELEVATION - LINE A  
SCALE: 1/8" = 1'-0"



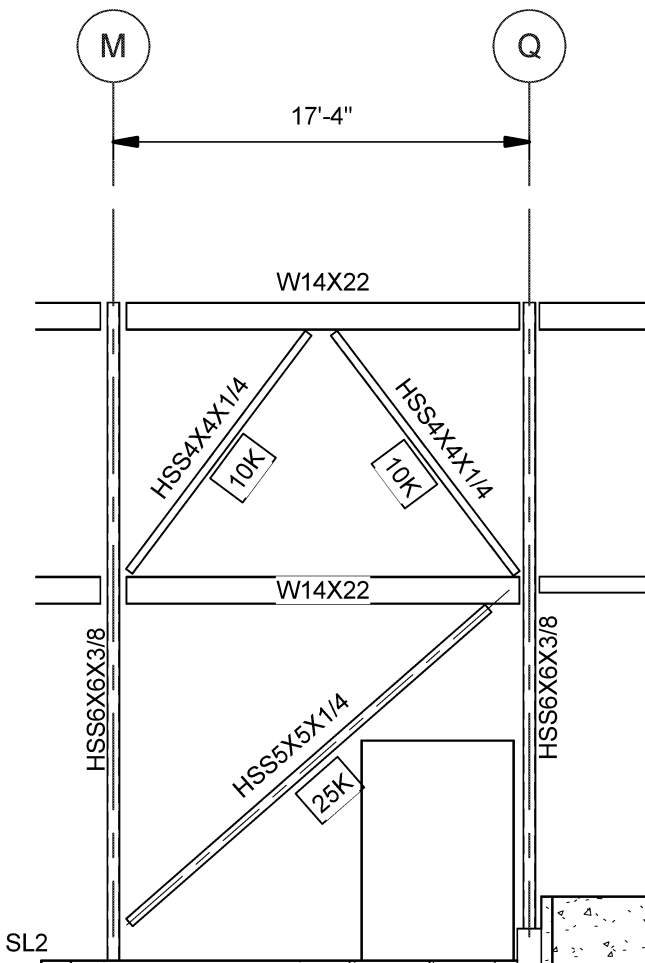
A2 BRACING ELEVATION - LINE R  
SCALE: 1/8" = 1'-0"



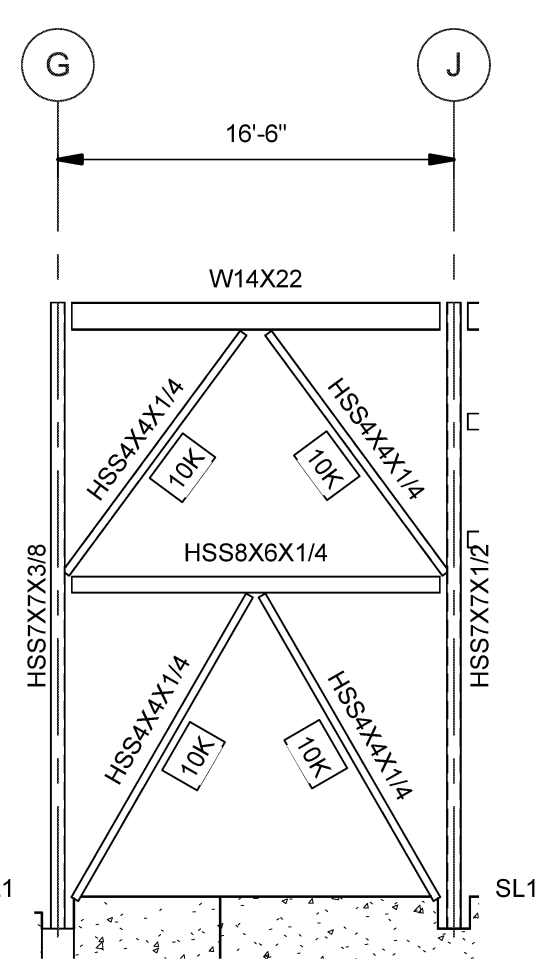
A3 BRACING ELEVATION - LINE G  
SCALE: 1/8" = 1'-0"



A4 BRACING ELEVATION - LINE G  
SCALE: 1/8" = 1'-0"



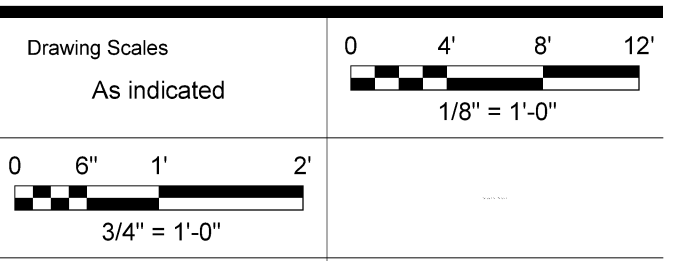
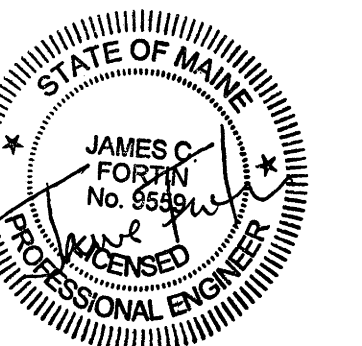
A5 BRACING ELEVATION - LINE 8  
SCALE: 1/8" = 1'-0"



A6 BRACING ELEVATION - LINE 12  
SCALE: 1/8" = 1'-0"

- BRACING NOTES:
- LOADS INDICATED ON FRAME ELEVATIONS ARE THE UNFACTORED AXIAL LOAD.
  - LOADS SHOWN MAY BE IN TENSION OR COMPRESSION.
  - SLX - INDICATES SHEAR LUG. SEE DETAILS ON S40.1 & SCHEDULE ON S10.1.
  - CONNECTION DESIGN & CALCULATIONS TO BE COMPLETED BY AN ENGINEER REGISTERED IN THE STATE OF MAINE. SUBMIT CALCULATIONS FOR REVIEW. DESIGN OF CONNECTIONS SHALL BE COMPLETED USING THE UNIFORM FORCE METHOD.
  - SLIP CRITICAL (SC) ARE REQUIRED AT ALL MOMENT CONNECTIONS & BRACED FRAME CONNECTIONS.

Mark	Date	Description
-	09-04-15	DESIGN DEVELOPMENT REVIEW
-	03-25-16	CONSTRUCTION DOCUMENTS
1	04-15-16	ADDENDUM #1
2	07-22-16	CONFORMANCE SET



PA / PE: JCF © 2016 Harriman Associates  
Drawn By: ZPP

BRACING ELEVATIONS

S40.1