

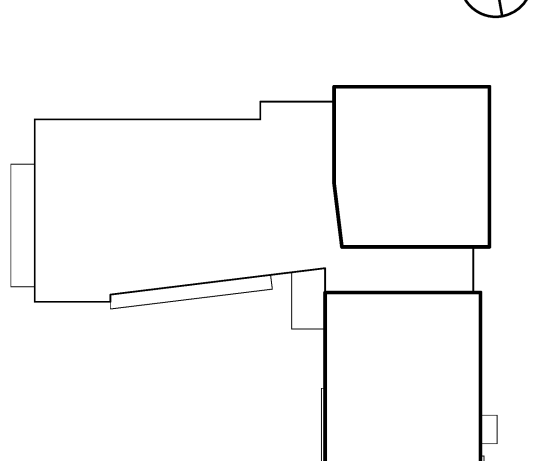
**JEWISH COMMUNITY ALLIANCE OF SOUTHERN MAINE**

PORTLAND, ME

Harriman Project No. 15309

Key Plan

Prof North

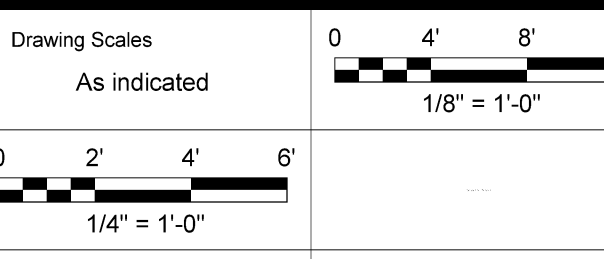
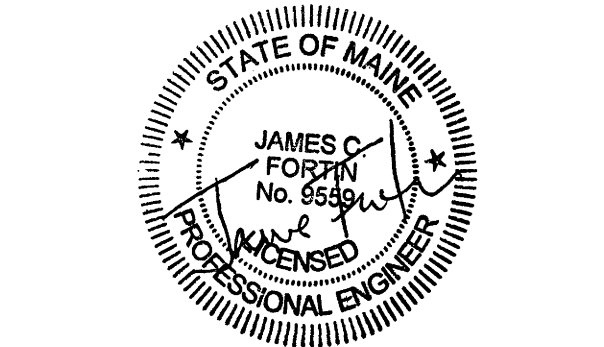


**FRAMING PLAN NOTES:**

- TOP OF STEEL ELEVATION IS REFERENCED (+/-) FROM FINISH FLOOR ELEVATION 106.00' (+0.0').
- SEE ADDITIONAL APPLICABLE FRAMING NOTES ON DRAWING S60.1.
- ALL STEEL BEAMS TO CONFORM TO ASTM A992 (Fy=50 KSI).
- ALL RECTANGULAR HSS COLUMNS TO CONFORM TO ASTM A500 (GR. B) (Fy=46 KSI).
- ALL ROUND STEEL PIPE TO CONFORM TO ASTM A53 (GR. B) (Fy=35 KSI).
- INDICATES DIAGONAL STEEL BRACINGS. SEE S40 DRAWINGS FOR ELEVATIONS AND DETAILS.
- PROVIDE ALL JOIST BRIDGING, INCLUDING UPLIFT BRIDGING. PER SJI REQUIREMENTS.
- "TJ" INDICATES BOLTED THE JOIST. EXTEND BOTTOM CHORD AT COLUMNS (DO NOT WELD). SEE TYP. DETAIL.
- D1 INDICATES SPAN OF 11'-2" - 22GA PAINTED ROOF DECK.
- D2 INDICATES SPAN OF 11'-2" - 18GA PAINTED ROOF DECK.
- PROVIDE UPLIFT BRIDGING AS SHOWN AT FIRST BOTTOM CHORD PANEL POINT (TYP.) NET UPLIFT PRESSURE = 10 PSF.
- INDICATES MOMENT CONNECTION. SEE SECTION D2/S60.1.
- FRAMING IS EQUALLY SPACED BETWEEN COLUMN GRIDS (UNLESS OTHERWISE NOTED ON PLANS).
- SECTIONS AND DETAILS SHOWN ON STRUCTURAL DRAWINGS SHALL BE CONSIDERED TYPICAL FOR SIMILAR FRAMING CONDITIONS NOT SPECIFICALLY REFERENCED.

Issues and Revisions

Mark	Date	Description
-	09-04-15	DESIGN DEVELOPMENT REVIEW
-	03-25-16	CONSTRUCTION DOCUMENTS
1	04-15-16	ADDENDUM #1
2	04-21-16	ADDENDUM #2
3	07-22-16	CONFORMANCE SET



PA/PE: JCF © 2016 Harriman Associates  
 Drawn By: ZPP

**ROOF & PARTIAL FRAMING PLAN**

**S30.1**

