

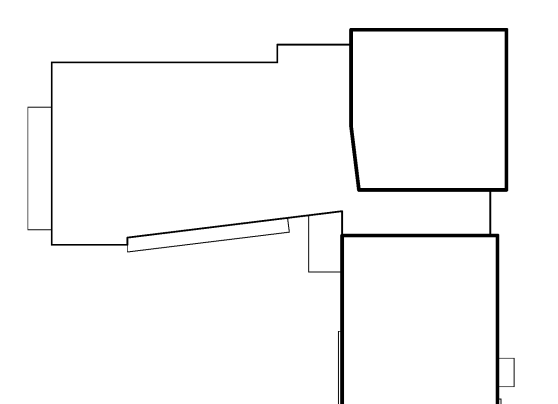
JEWISH COMMUNITY ALLIANCE OF SOUTHERN MAINE

PORTLAND, ME

Harriman Project No. 15309

Key Plan

Proj North

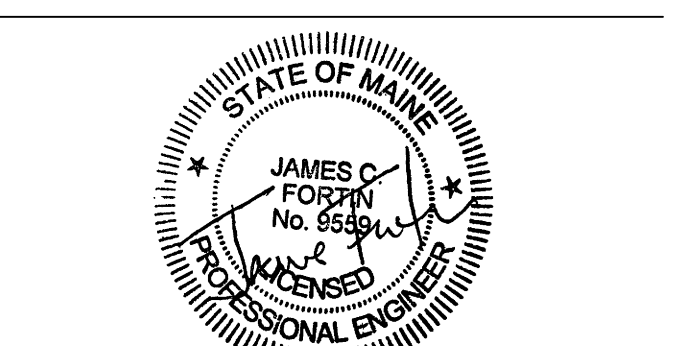


FOUNDATION PLAN NOTES:

- TOP OF CONCRETE ELEVATION IS REFERENCED (+) FROM FINISH FLOOR ELEVATION 106.00' (+0.00').
- SEE ADDITIONAL APPLICABLE FOUNDATION NOTES ON DRAWING S50.1.
- (-8") INDICATES TOP OF CONCRETE ELEVATION.
- (-4'-0") INDICATES TOP OF FOOTING ELEVATION.
- PIERS AND SPREAD FOOTINGS ARE CENTERED ON COLUMNS, UNLESS NOTED OTHERWISE.
- SEE ARCHITECTURAL DRAWINGS FOR LOCATIONS AND DIMENSIONS OF ALL DEPRESSED SLABS. VERIFY DEPRESSED SLAB ELEVATION WITH ACTUAL FLOORING PRODUCT TO BE INSTALLED.
- (-) INDICATES SPAN OF STRUCTURAL SLAB. SEE DETAIL A2/S10.1.
- UNLESS NOTED OTHERWISE ON PLANS, ALL CONCRETE SLABS ON GRADE SHALL BE 4" THICK WITH FIBER REINFORCING.
- TOP OF PIER ELEVATION = (-8") UNLESS NOTED OTHERWISE.
- SECTIONS AND DETAILS SHOWN ON STRUCTURAL DRAWINGS SHALL BE CONSIDERED TYPICAL FOR SIMILAR FRAMING CONDITIONS NOT SPECIFICALLY REFERENCED.
- S.K. INDICATES SHEAR KEY TO BE PLACED WITHIN TOP OF CONCRETE PIER/FTG. COORDINATE REINF. AROUND SHEAR KEY AS NECESSARY. MAINTAINING CONTINUOUS HORIZ. BENT TIES AT PIER COORDINATE SHEAR KEY SIZE W/ SHEAR LUG SCHEDULE ON DWG. S10.1 & SECTION D6/S40.1.

Issues and Revisions

Mark	Date	Description
-	09-04-15	DESIGN DEVELOPMENT REVIEW
-	10-01-15	ISSUED FOR SITE COORDINATION
-	03-25-16	CONSTRUCTION DOCUMENTS
1	04-15-16	ADDENDUM #1
2	04-21-16	ADDENDUM #2
3	05-04-16	ADDENDUM #4
4	07-22-16	CONFORMANCE SET

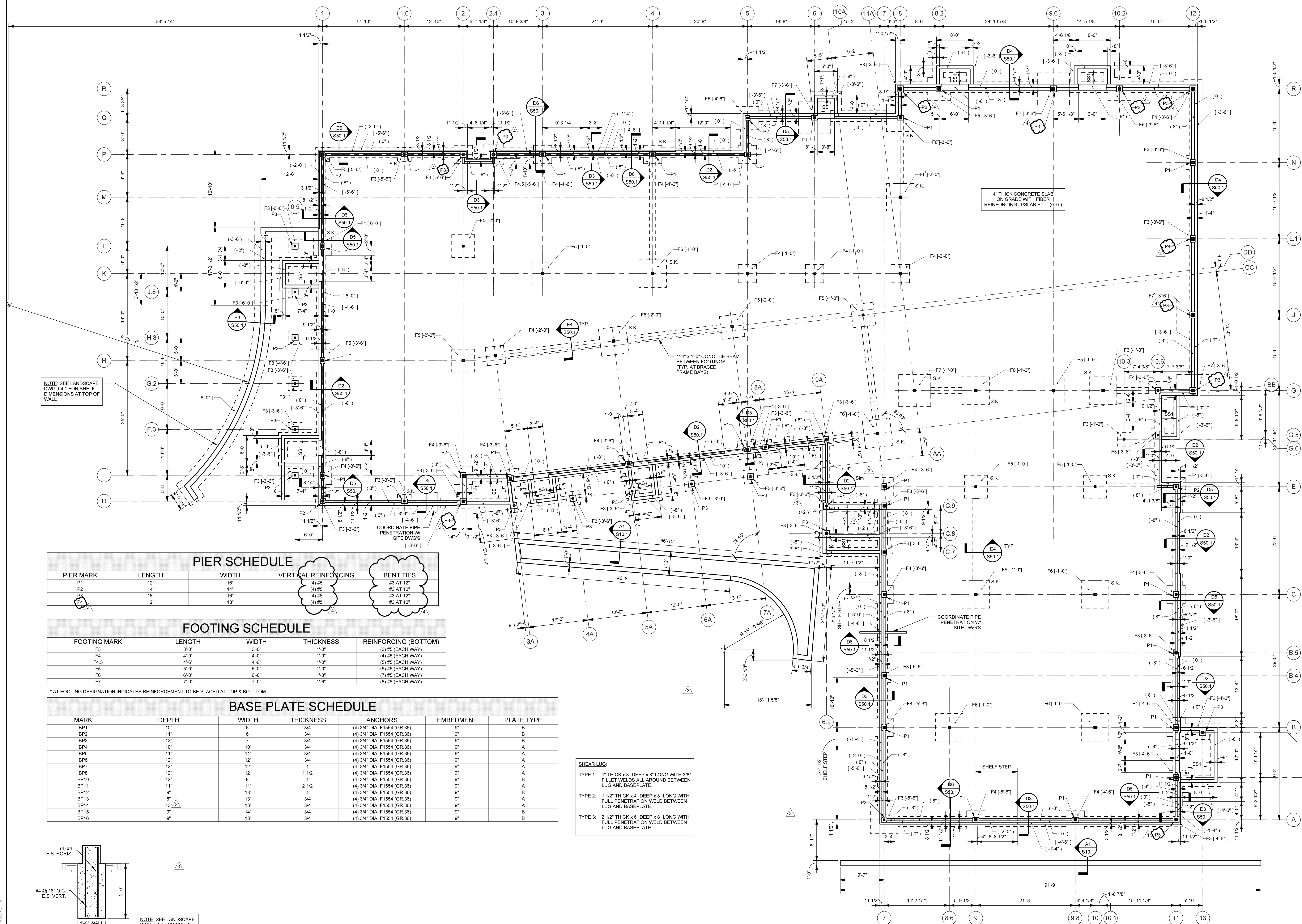


Drawing Scales: 0 4 8 12
As indicated 1/8" = 1'-0"

PA/PE: JCF © 2016
Drawn By: ZPP Harriman Associates

FOUNDATION PLAN

S10.1



NOTE: SEE LANDSCAPE DWG. L4.1 FOR SHELF DIMENSIONS AT TOP OF WALL

PIER SCHEDULE

PIER MARK	LENGTH	WIDTH	VERTICAL REINFORCING	BENT TIES
P1	12"	16"	(4) #5	#3 AT 12"
P2	14"	16"	(4) #5	#3 AT 12"
P3	16"	16"	(4) #5	#3 AT 12"
P4	12"	18"	(4) #5	#3 AT 12"

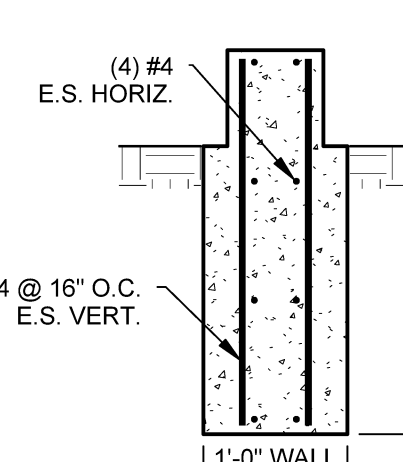
FOOTING SCHEDULE

FOOTING MARK	LENGTH	WIDTH	THICKNESS	REINFORCING (BOTTOM)
F3	3'-0"	3'-0"	1'-0"	(3) #5 (EACH WAY)
F4	4'-0"	4'-0"	1'-0"	(4) #5 (EACH WAY)
F4.5	4'-6"	4'-6"	1'-0"	(5) #5 (EACH WAY)
F5	5'-0"	5'-0"	1'-0"	(5) #5 (EACH WAY)
F6	6'-0"	6'-0"	1'-3"	(7) #5 (EACH WAY)
F7	7'-0"	7'-0"	1'-6"	(8) #5 (EACH WAY)

BASE PLATE SCHEDULE

MARK	DEPTH	WIDTH	THICKNESS	ANCHORS	EMBEDMENT	PLATE TYPE
BP1	10"	6"	3/4"	(4) 3/4" DIA F1554 (GR.36)	9"	B
BP2	11"	6"	3/4"	(4) 3/4" DIA F1554 (GR.36)	9"	B
BP3	12"	7"	3/4"	(4) 3/4" DIA F1554 (GR.36)	9"	B
BP4	10"	10"	3/4"	(4) 3/4" DIA F1554 (GR.36)	9"	A
BP5	11"	11"	3/4"	(4) 3/4" DIA F1554 (GR.36)	9"	A
BP6	12"	12"	3/4"	(4) 3/4" DIA F1554 (GR.36)	9"	A
BP7	12"	12"	1"	(4) 3/4" DIA F1554 (GR.36)	9"	A
BP8	12"	12"	1 1/2"	(4) 3/4" DIA F1554 (GR.36)	9"	A
BP10	12"	9"	1"	(4) 3/4" DIA F1554 (GR.36)	9"	B
BP11	11"	11"	2 1/2"	(4) 3/4" DIA F1554 (GR.36)	9"	A
BP12	9"	13"	1"	(4) 3/4" DIA F1554 (GR.36)	9"	B
BP13	8"	13"	3/4"	(4) 3/4" DIA F1554 (GR.36)	9"	A
BP14	13 3/4"	13"	3/4"	(4) 3/4" DIA F1554 (GR.36)	9"	A
BP15	9"	14"	3/4"	(4) 3/4" DIA F1554 (GR.36)	9"	B
BP16	9"	13"	3/4"	(4) 3/4" DIA F1554 (GR.36)	9"	B

SHEAR LUG
 TYPE 1: 1" THICK x 3" DEEP x 6" LONG WITH 3/8" FILET WELDS ALL AROUND BETWEEN LUG AND BASEPLATE.
 TYPE 2: 1 1/2" THICK x 4" DEEP x 8" LONG WITH FULL PENETRATION WELD BETWEEN LUG AND BASEPLATE.
 TYPE 3: 2 1/2" THICK x 6" DEEP x 8" LONG WITH FULL PENETRATION WELD BETWEEN LUG AND BASEPLATE.



A1 SECTION SCALE: 3/4" = 1'-0"

A2 FOUNDATION PLAN SCALE: 1/8" = 1'-0"