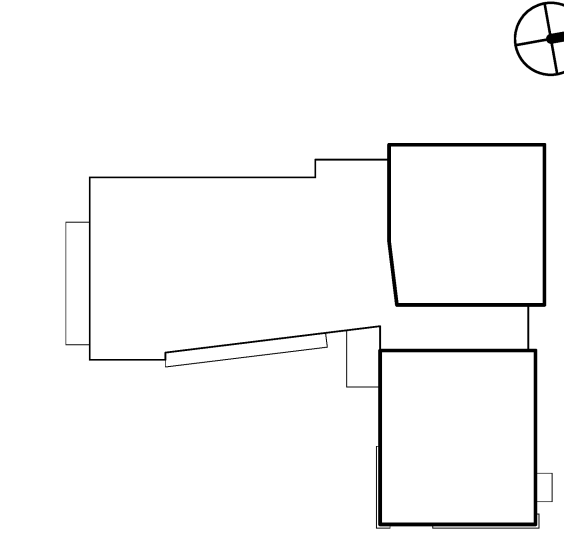


JEWISH COMMUNITY ALLIANCE OF SOUTHERN MAINE

PORTLAND, ME

Harriman Project No. 15309

Key Plan Proj North



GENERAL NOTES

- DRAWINGS ARE DIAGRAMMATIC ONLY AND REPRESENT THE GENERAL SCOPE OF THE WORK. REVIEW THE GENERAL NOTES, SPECIFICATIONS AND PLANS FOR ADDITIONAL REQUIREMENTS THAT MAY NOT BE SPECIFICALLY CALLED OUT IN THIS PORTION OF THE CONSTRUCTION DOCUMENTS. NOTIFY THE ARCHITECT OF ANY CONFLICTS OR DISCREPANCIES PRIOR TO SUBMISSION OF BID.
- VERIFY LOCATION AND DEPTH OF UTILITIES AT ALL POINTS OF CONNECTION INDICATED ON DRAWINGS BEFORE START OF PROJECT.
- COORDINATE ALL WORK WITH OTHER TRADES AND CONTRACTORS. COORDINATE PIPING INSTALLATION WITH STRUCTURAL GRADE BEAMS, FOOTINGS, COLUMN PIER, ETC. SLEEVE PIPING THROUGH GRADE BEAMS, FOOTING, ETC. WHERE REQUIRED AND AS NOTED ON PLANS. COORDINATE SLEEVE INSTALLATIONS WITH THE ARCHITECT, STRUCTURAL ENGINEER, STRUCTURAL CONTRACTOR AND GENERAL CONTRACTOR BEFORE CONCRETE IS INSTALLED. PIPING INVERTS AND SLOPE SHALL BE CLOSELY COORDINATED TO AVOID CONFLICTS WITH ALL OTHER TRADES BELOW SLAB WORK.
- COORDINATE PIPE ROUTING AWAY FROM ELECTRICAL PANELS. DO NOT ROUTE PIPING OVER ELECTRICAL PANELS.
- PIPING IN FINISHED AREAS SHALL BE ROUTED CONCEALED. EXPOSED PIPING, WHERE NECESSARY, SHALL BE ROUTED AS HIGH AS POSSIBLE AND TIGHT TO WALLS.
- REFER TO INSTALLATION SCHEDULE DATA FOR THE SIZE OF PIPING CONNECTIONS AND MOUNTING HEIGHTS OF EACH FIXTURE.
- ALL PLUMBING FIXTURE SHUT-OFF AND/OR BALANCING VALVES INSTALLED IN PIPE CHASES SHALL BE ACCESSIBLE FROM JUST ABOVE THE CEILING LINE OR ACCESS DOORS PROVIDED LOW IN CHASE WALL.
- SANITARY WASTE PIPING 4" & LARGER SHALL BE INSTALLED WITH A PITCH OF 1/8" PER 1'-0".
- ALL UNDERSLAB PIPING SHALL BE INTALLED TO PROVIDE NO LESS THAN 2" OF COVER BETWEEN THE PIPING AND THE FLOOR SLAB.
- VENT AND WATER PIPING SHALL PITCH TO DRAIN.
- PROVIDE FIXTURE STOPS ON ANY WATER SUPPLY IMMEDIATELY ADJACENT TO PLUMBING FIXTURES.
- CLEAN FAUCET AERATORS AND PIPE STRAINERS PRIOR TO TURNING BUILDING OVER TO THE OWNER.
- PROVIDE TRAP PRIMERS WHERE REQUIRED BY LOCAL AUTHORITIES.
- VALVES SHALL BE LINE SIZE UNLESS OTHERWISE NOTED.
- TEMPERATURE MAINTENANCE CABLE SHALL BE CARRIED TO WITHIN 12" OF EACH PLUMBING MECHANICAL FIXTURE SUPPLIED WITH HOT WATER.
- STORM DRAIN PIPING SHALL BE INSTALLED WITH A PITCH OF 1/8" PER 1'-0".
- THE TERM "PROVIDE" SHALL MEAN TO FURNISH, INSTALL AND CONNECT COMPLETELY.
- ENTIRE PLUMBING INSTALLATION SHALL BE IN COMPLIANCE WITH ALL CURRENT LOCAL, STATE AND FEDERAL CODES AND STANDARDS.
- OSHA RULES, REGULATIONS AND REQUIREMENTS, AND ANY STATE AND LOCAL REQUIREMENTS FOR SAFETY SHALL BE FOLLOWED BY THE CONTRACTOR.

LEGEND

	EXISTING PIPING BELOW FINISHED FLOOR TO BE REMOVED		CIRCULATING PUMP		ELECTRIC WATER COOLER
	EXISTING COMPRESSED AIR PIPING BELOW FINISHED FLOOR		CHECK VALVE		FLOOR CLEANOUT
	COMPRESSED AIR PIPING ABOVE FINISHED FLOOR		PRESSURE RELIEF VALVE		FLOOR DRAIN
	EXISTING COLD WATER PIPING BELOW FINISHED FLOOR		SHUT-OFF VALVE		FLOOR SINK
	COLD WATER PIPING ABOVE FINISHED FLOOR		THERMOMETER		HOSE BIBB
	DISH WASHER WASTE PIPING BELOW FINISHED FLOOR (POLYPROPYLENE)		TRANSITION		LAVATORY
	EXISTING GAS PIPING BELOW FINISHED FLOOR		THREE WAY VALVE		MOP RECEPTOR
	GAS PIPING ABOVE FINISHED FLOOR		CAP		SHOCK ARRESTER (P.D.I. RATING)
	EXISTING GREASE WASTE PIPING BELOW FINISHED FLOOR		FLOOR CLEANOUT		SHOWER
	GREASE WASTE PIPING ABOVE FINISHED FLOOR		FLOOR DRAIN		SOLIDS INTERCEPTOR
	EXISTING HOT WATER PIPING BELOW FINISHED FLOOR		FREEZE PROOF WALL HYDRANT		SINK
	HOT WATER PIPING ABOVE FINISHED FLOOR		HOT WATER HOSE BIBB		SUMP PUMP
	EXISTING HOT WATER RETURN PIPING BELOW FINISHED FLOOR		PIPE DROP		TRAP PRIMER
	HOT WATER RETURN PIPING ABOVE FINISHED FLOOR		PIPE RISE		URINAL
	EXISTING INDIRECT WASTE PIPING BELOW FINISHED FLOOR		MASTER TEMPERING VALVE		WATER CLOSET
	INDIRECT WASTE PIPING ABOVE FINISHED FLOOR		ACCESS PANEL		WATER FOUNTAIN
	EXISTING OXYGEN PIPING BELOW FINISHED FLOOR		BOOSTER PUMP		WATER CLOSET
	OXYGEN PIPING ABOVE FINISHED FLOOR		CLOTHES WASHER		WALL HYDRANT
	EXISTING SANITARY PIPING BELOW FINISHED FLOOR		DOMESTIC CIRCULATING PUMP		ABOVE FINISHED FLOOR
	SANITARY PIPING ABOVE FINISHED FLOOR		DISH WASHER		BELOW FINISHED FLOOR
	EXISTING STORM DRAIN PIPING BELOW FINISHED FLOOR		EMERGENCY EYEWASH		DOWN
	STORM DRAIN PIPING ABOVE FINISHED FLOOR		EXPANSION TANK		SOIL GAS THRU ROOF
	EXISTING SOIL GAS PIPING BELOW FINISHED FLOOR				TYPICAL
	SOIL GAS PIPING ABOVE FINISHED FLOOR				VENT THROUGH ROOF
	TEMPERED WATER ABOVE FINISHED FLOOR				
	EXISTING VENT PIPING BELOW FINISHED FLOOR				
	VENT PIPING ABOVE FINISHED FLOOR				

PLUMBING FIXTURE INSTALLATION SCHEDULE

TAG	DESCRIPTION	BRANCH SIZE					FIXTURE SPECIFICATIONS	SUPPLY FITTING SPECIFICATIONS	MOUNTING HEIGHT
		VENT	WASTE	HW	CW	TW			
WC-1	ADA COMPLIANT WATER CLOSET WALL MOUNTED	2"	4"		1"		AMERICAN STANDARD AFWALL FLOWISE MODEL 3351.101, PROVIDE CHURCH MODEL 9500CT TOILET SEAT	SLOAN ROYAL MODEL 111-1.28	16 1/4"
WC-2	WATER CLOSET WALL MOUNTED	2"	4"		1"		AMERICAN STANDARD AFWALL FLOWISE MODEL 3351.101, PROVIDE CHURCH MODEL 9500CT TOILET SEAT	SLOAN ROYAL MODEL 111-1.28	15"
WC-3	FLOOR MOUNTED TODDLER WATER CLOSET	2"	3"		1/2"		AMERICAN STANDARD BABY DEVORO FLOWISE MODEL 4019.228, PROVIDE MODEL 5385.10 TOILET SEAT	TANK TYPE	10 1/4"
WC-4	WATER CLOSET FLOOR MOUNTED	2"	4"		1"		AMERICAN STANDARD MADERA FLOWISE MODEL 3461.001, PROVIDE CHURCH MODEL 9500CT TOILET SEAT	SLOAN SOLIS MODEL 811-1.28	16 1/2"
UR-1	WALL MOUNTED URINAL ADA COMPLIANT	1 1/2"	2"		3/4"		AMERICAN STANDARD WASHBROOK FLOWISE MODEL 6590.001	SLOAN ROYAL MODEL 186-0.25	17"
UR-2	WALL MOUNTED URINAL	1 1/2"	2"		3/4"		AMERICAN STANDARD WASHBROOK FLOWISE MODEL 6590.001	SLOAN ROYAL MODEL 186-0.25	24"
L-1	UNDERCOUNTER MOUNTED LAVATORY	1 1/2"	2"	1/2"	1/2"		AMERICAN STANDARD OVALVYN MODEL 0496.300	SLOAN BASYS EFX-275 500.0000	34"
L-2	UNDERCOUNTER MOUNTED LAVATORY	1 1/2"	2"	1/2"	1/2"		AMERICAN STANDARD OVALVYN MODEL 0496.300	SLOAN BASYS EFX-275 500.0000	22"
SK-1	SINGLE BOWL UNDERCOUNTER MOUNT SINK	1 1/2"	2"	1/2"	1/2"		ELKAY UNDERMOUNT SINK MODEL ELUHAD2816PD	CHICAGO FAUCET MANUAL FAUCET MODEL 2304-E35ABCP	
SK-2	SINGLE BOWL UNDERCOUNTER MOUNT SINK	1 1/2"	2"	1/2"	1/2"		ELKAY UNDERMOUNT SINK MODEL ELUHAD1616PD	CHICAGO FAUCET MANUAL FAUCET MODEL 2304-E35ABCP	
SK-3	TWO BOWL UNDERCOUNTER MOUNT SINK	1 1/2"	2"	1/2"	1/2"		ELKAY UNDERMOUNT SINK MODEL ELUHAD361855PD, PROVIDE OFFSET TAILPIECE	CHICAGO FAUCET MANUAL FAUCET MODEL 2304-E35ABCP	
SK-4	SINGLE BOWL ART SINK	1 1/2"	2"	1/2"	1/2"		ELKAY STURDIBILT MODEL S58104		34"
SK-5	HAND SINK	1 1/2"	1 1/2"	1/2"	1/2"		ADVANCED TABCO MANUFACTURING MODEL 7-PS-70	CHICAGO FAUCETS MODEL W4W-G2E35-369AB, PROVIDE 2688-ADA PRIME-EZIE TRAP PRIMER	34"
SK-6	SINGLE BOWL UNDERCOUNTER MOUNT SINK	1 1/2"	2"	1/2"	1/2"		ADVANCE TABCO MODEL DIADV-X	THREE FAUCETS	24"
SH-1	ADA COMPLIANT ACRYLIC TRANSFER SHOWER	1 1/2"	2"	1/2"	1/2"		AQUARIUS BATHWARE ADA MODEL S-4136-BF-OT-.75	ZURN TEMP GUARD MODEL Z7121-SS-LH	
EW-1	BI LEVEL ELECTRONIC WATER COOLER WITH BOTTLE FILLING STATION	1 1/2"	2"		1/2"		HALSEY TAYLOR MODEL HTHBW-OVLSER-1		34"
TV-1	HYDROGUARD XP N1LO MIXING VALVE			3/4"	3/4"	1"	POWERS MODEL LPM432HL		48"
TV-2	EMERGENCY MIXING VALVE			1/2"	1/2"	1/2"	LEONARD ECO-MIX MODEL LA-300-LF-S151L REC-VIEW		80"
EW-1	EYEWASH/DRENCH STATION					1/2"	GUARDIAN DRENCH STATION MODEL G5014		36"
MB-1	MOP BASIN	1 1/2"	2"	1/2"	1/2"		FIAT MOLDED STONE M5B3624	CHICAGO FAUCETS MODEL 540-LD897SWFXKPCP, MOUNT FAUCET AT 36" AFF	36"
FD-1	FLOOR DRAIN	1 1/2"	2"				WATTS ROUND HEAVY DUTY MODEL FD-102-B6		
FS-1	FLOOR SINK	2"	4"				WATTS MODEL FS-780-F-160		
OB-1	WASHING MACHINE OUTLETBOX	1 1/2"	2"	1/2"	1/2"		SIoux CHIEF WASHING MACHINE OUTLET BOX MODEL 696-G2313MF, PROVIDE 696 SECONDARY DRAIN FUNNEL		48"
OB-2	STAINLESS STEEL OUTLET BOX	1 1/2"	2"				ACORN MODEL B200-1 WITH DOOR		36"
TP-1	ELECTRONIC TRAP PRIMER				1/2"		ZURN MODEL Z1020XL		66"

EXPANSION TANK SCHEDULE

MARK	MANUFACTURER	MODEL	VOLUME (GALLONS)	MAXIMUM ACCEPTANCE VOLUME (GALLONS)	MAXIMUM OPERATING PRESSURE (PSI)	MAXIMUM OPERATING TEMPERATURE (DEG. F)	NOTES
ET-1	AMTROL	ST-12	6.4	0.9	150.00	200	

NOTES:
1. CHARGE TANK WITH IDENTICAL AIR PRESSURE AS STATIC DOMESTIC WATER PRESSURE DOWNSTREAM OF BACKFLOW PREVENTER.

WATER HEATER SCHEDULE

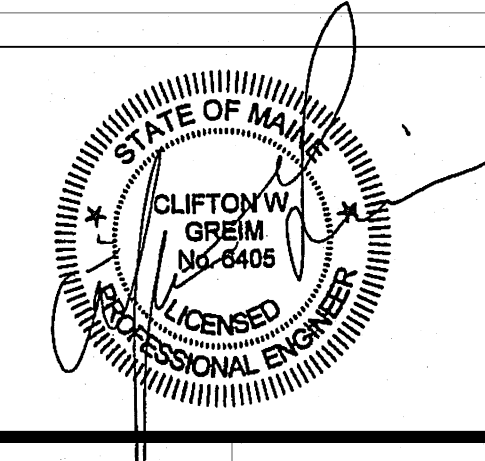
TAG	MANUFACTURER	MODEL	TANK VOLUME (GALLONS)	GAS INPUT (MBH)	RECOVERY (GPH)	ELECTRICAL		NOTES
						VOLTS	PHASE	
WHTR-1	HTP	PH130-119	119.0	130.0	225	120 V	1	

TEMPERATURE MAINTENANCE CABLE SCHEDULE

CIRCUIT	AMP-VOLT-PHASE	REMARKS	APPROX. LENGTH
TM-1	30-208-1	ECO CONTROLLER LOCATED IN MECHANICAL ROOM 129 REFER TO SPECS FOR SPECIFIC TESTING REQUIREMENTS	460
TM-2	30-208-1	ECO CONTROLLER LOCATED IN MECHANICAL ROOM 129 REFER TO SPECS FOR SPECIFIC TESTING REQUIREMENTS	341
TM-3	30-208-1	ECO CONTROLLER LOCATED IN MECHANICAL ROOM 129 REFER TO SPECS FOR SPECIFIC TESTING REQUIREMENTS	293

Issues and Revisions

Mark	Date	Description
09-04-15		DESIGN DEVELOPMENT REVIEW
10-01-15		ISSUED FOR SITE COORDINATION
03-25-16		CONSTRUCTION DOCUMENTS
07-22-16		CONFORMANCE SET



Drawing Scales

NO SCALE	

PA/PE: CG © 2016 Harriman Associates
Drawn By: MAM

LEGEND, SCHEDULES AND GENERAL NOTES