

HARRIMAN

AUBURN PORTLAND MANCHESTER

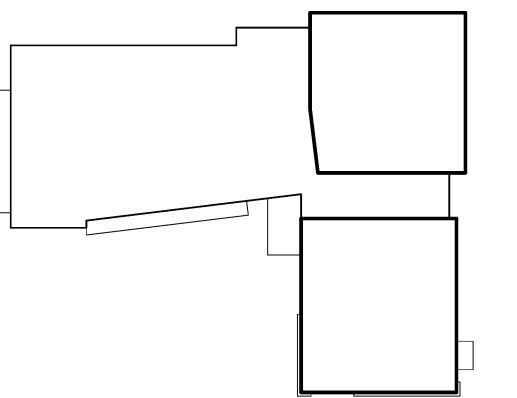
JEWISH COMMUNITY ALLIANCE OF SOUTHERN MAINE

PORTLAND, ME

Harriman Project No. 15309

Key Plan

Proj North



HOOD INFORMATION

Table with columns: HOOD NO., TAG, MODEL, LENGTH, MAX COOKING TEMP, TOTAL EXH. CFM, EXHAUST PLENUM RISER(S) (WIDTH, LENG, DIA, CFM, S.P.), HOOD CONSTRUCTION, HOOD END TO END, HOOD ROW.

HOOD INFORMATION

Table with columns: HOOD NO., TAG, TYPE, QTY, HEIGHT, LENGTH, EFFICIENCY @ 9 MICRONS, QTY, TYPE, WIRE GUARD, LOCATION, FIRE SYSTEM (TYPE, SIZE), UTILITY CABINET(S) (MODEL #), ELECTRICAL, SWITCHES (QUANTITY), FIRE SYSTEM PIPING, HOOD SYSTEM HANGING WT/LBS.

HOOD OPTIONS

Table with columns: HOOD NO., TAG, OPTION. Lists various accessories like field wrappers, end standoffs, quarter end panels, and insulation for different hood configurations.

ND-2 Series with PSP Accessory Specification

The ND-2 series hood with PSP accessory is a compensating canopy hood system rated for all types of cooking equipment. The hood shall have the size, shape and performance specified on drawings.

Construction shall be type 430 stainless steel with a #3 or #4 polish where exposed. Individual component construction shall be determined by the manufacturer and ETL. Construction shall be dependent on the structural application to minimize distortion and other defects. All seams, joints and penetrations of the hood enclosure to the lower outermost perimeter that directs and captures grease-laden vapor and exhaust gases shall have a liquid-tight continuous external weld in accordance with NFPA 96. Hood shall be wall type with fully welded 10 gauge corner hanging angles. Corner hanging angles have a 825 x 1,500 slot pre-punched at the factory, allowing hanging rods to be used for quick and safe installations. Hanging rod and connect is provided by and installed by others.

Ventilator shall be furnished with U.L. classified aluminum baffle filters, supplied in size and quantity as required by ventilator. The filters shall extend the full length of the hood and the filter panels shall not be more than 6" in width.

The hood manufacturer shall supply complete computer generated submittal drawings including hood section view(s) and hood plan view(s). These drawings must be available to the engineer, architect and owner for their use in construction, operation and maintenance.

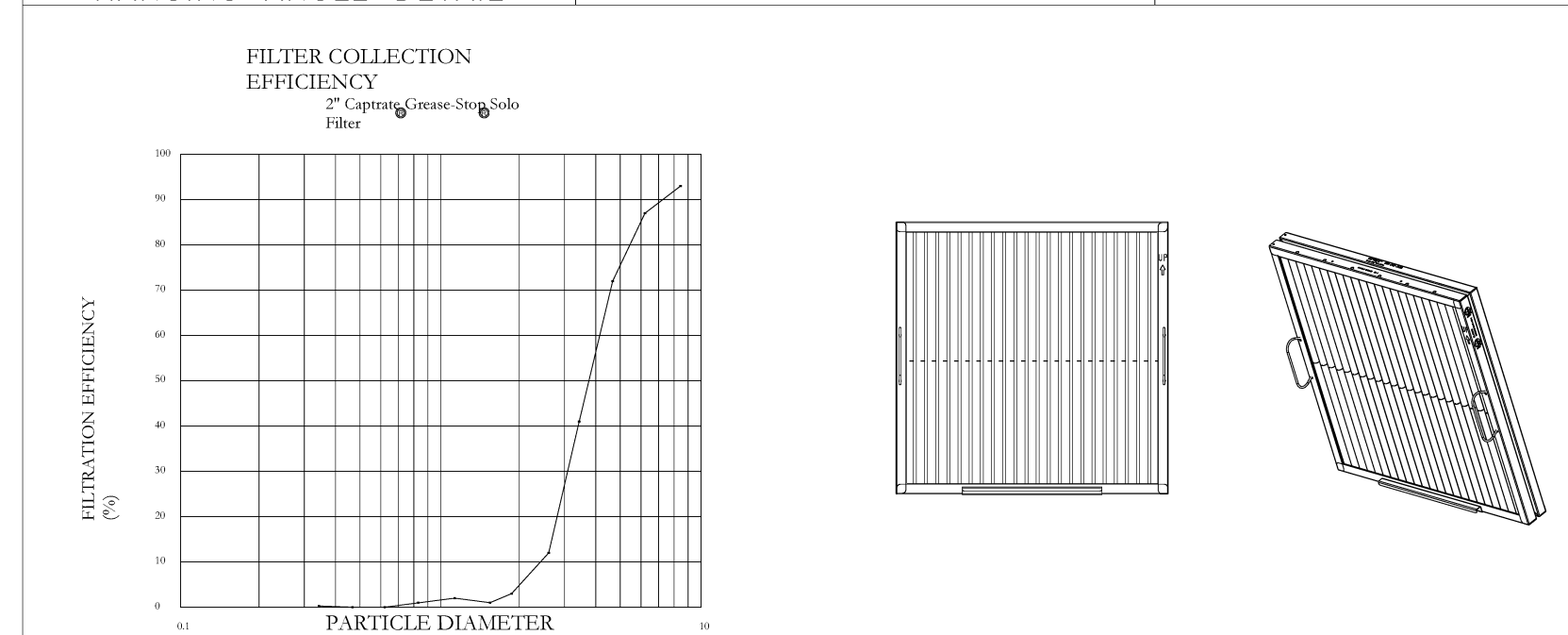
Exhaust duct collar to be 4" high with 1" flange. Duct sizes, CFM and static pressure requirements shall be as shown on drawings. Static pressure requirements shall be precise and accurate, air velocity and volume information shall be accurate within 1-ft increments along the length of the ventilator.

U.L. incandescent light fixtures and globes shall be installed and pre-wired to a junction box. The light fixtures shall be installed with a maximum of 40" spacing on center and allow up to a 100 watt standard light bulb.

The hood shall have: -A double wall insulated front to eliminate condensation and increase rigidity. The insulation shall have a flexural modulus of 475 EI, meet UL 181 requirements and be in accordance with NFPA 90A and 90B. -An integral front baffle to direct grease laden vapors toward the exhaust filter bank. -A built-in wiring chase provided for outlets and electrical controls on the hood face and shall not penetrate the capture area or require an external chaseway. -Low velocity make-up air (up to 90%) provided through front and side plenums (PSP accessory). -A removable grease cup for easy cleaning.

The hood shall be ETL Listed as "Exhaust Hood Without Exhaust Damper", ETL Sanitation Listed and built in accordance with NFPA 96. The hood shall be listed for 450°F cooking surfaces at 150 CFM/F, 500°F cooking surfaces at 200 CFM/F, and 700°F cooking surfaces at 250 CFM/F.

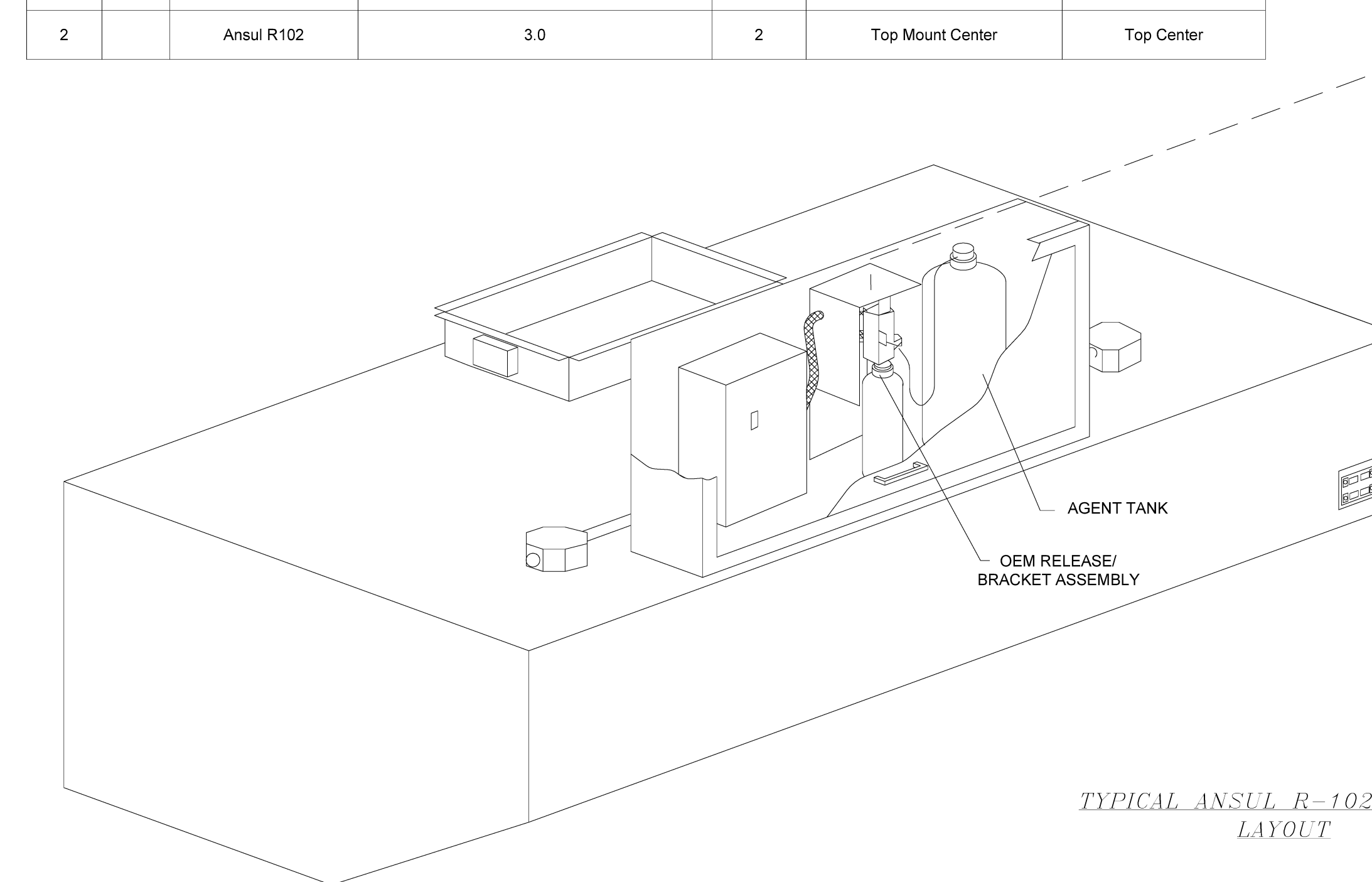
Diagram showing 'HANGING ANGLE DETAIL' with dimensions and text: 'CAPTIVE-AIRE HOODS ARE BUILT IN COMPLIANCE WITH NFPA #96 ETL SANITATION LISTED ETL LISTED #3054804-001 Intertek'.



SPECIFICATION: CAPTRATE GREASE-STOP SOLO FILTER THE CAPTRATE GREASE-STOP SOLO FILTER IS A SINGLE STAGE FILTER FEATURING A UNIQUE S-BAFFLE DESIGN IN CONJUNCTION WITH A SLOTTED REAR BAFFLE DESIGN, TO DELIVER EXCEPTIONAL FILTRATION EFFICIENCY. FILTER IS CONSTRUCTED OF 430 STAINLESS STEEL, AND SIZED TO FIT INTO STANDARD 2-INCH DEEP HOOD CHANNEL(S). UNITS SHALL INCLUDE STAINLESS STEEL HANDLES AND A FASTENING DEVICE TO SECURE THE TWO COMPONENTS WHEN ASSEMBLED. GREASE EXTRACTION EFFICIENCY PERFORMANCE SHALL REMOVE AT LEAST 75% OF GREASE PARTICLES FIVE MICRONS IN SIZE, AND 90% GREASE PARTICLES SEVEN MICRONS IN SIZE AND LARGER, WITH A CORRESPONDING PRESSURE DROP NOT TO EXCEED 1.0 INCHES OF WATER GAUGE.

Fire System Information

Table with columns: FIRE SYSTEM NO., TAG, TYPE, SIZE, FLOW POINTS, INSTALLATION (SYSTEM, LOCATION ON HOOD).



TYPICAL ANSUL R-102 SYSTEM LAYOUT

Issues and Revisions table with columns: Mark, Date, Description.

Table with columns: Mark, Date, Description. Shows revision 3 on 07-22-16 for CONFORMANCE SET.

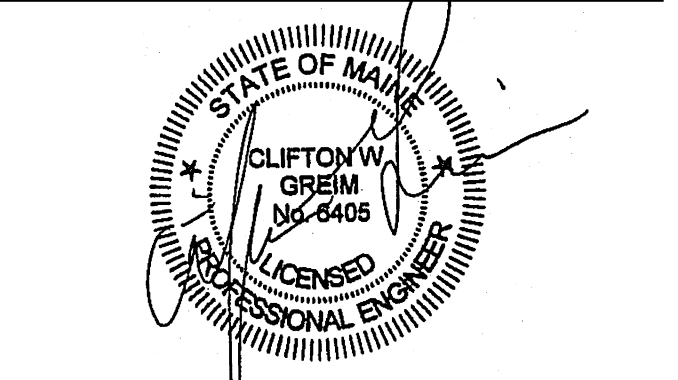


Table with columns: Drawing Scale, PA/PE, CG, MDHS, and copyright information for 2016 Harriman Associates.

DETAILS

M30.5