

HARRIMAN

AUBURN PORTLAND MANCHESTER

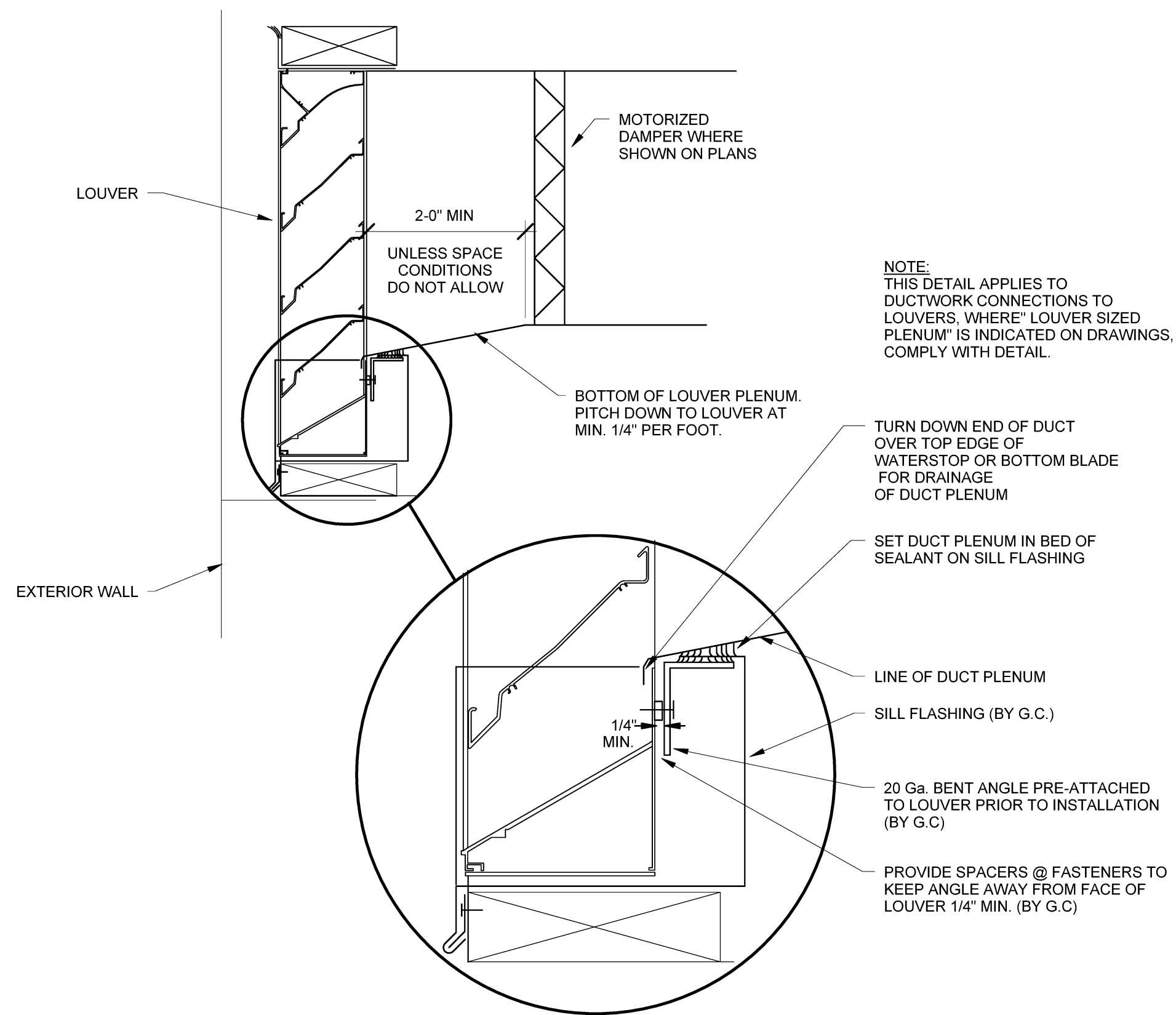
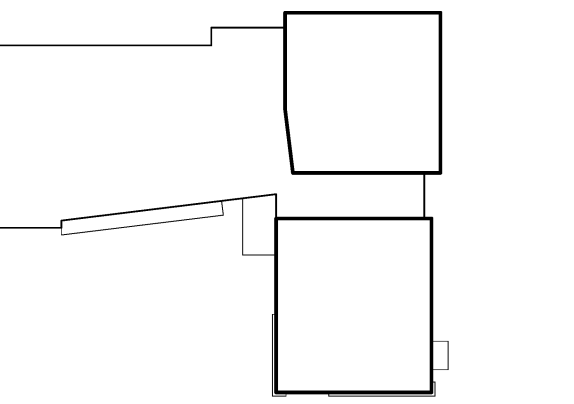
JEWISH COMMUNITY ALLIANCE OF SOUTHERN MAINE

PORTLAND, ME

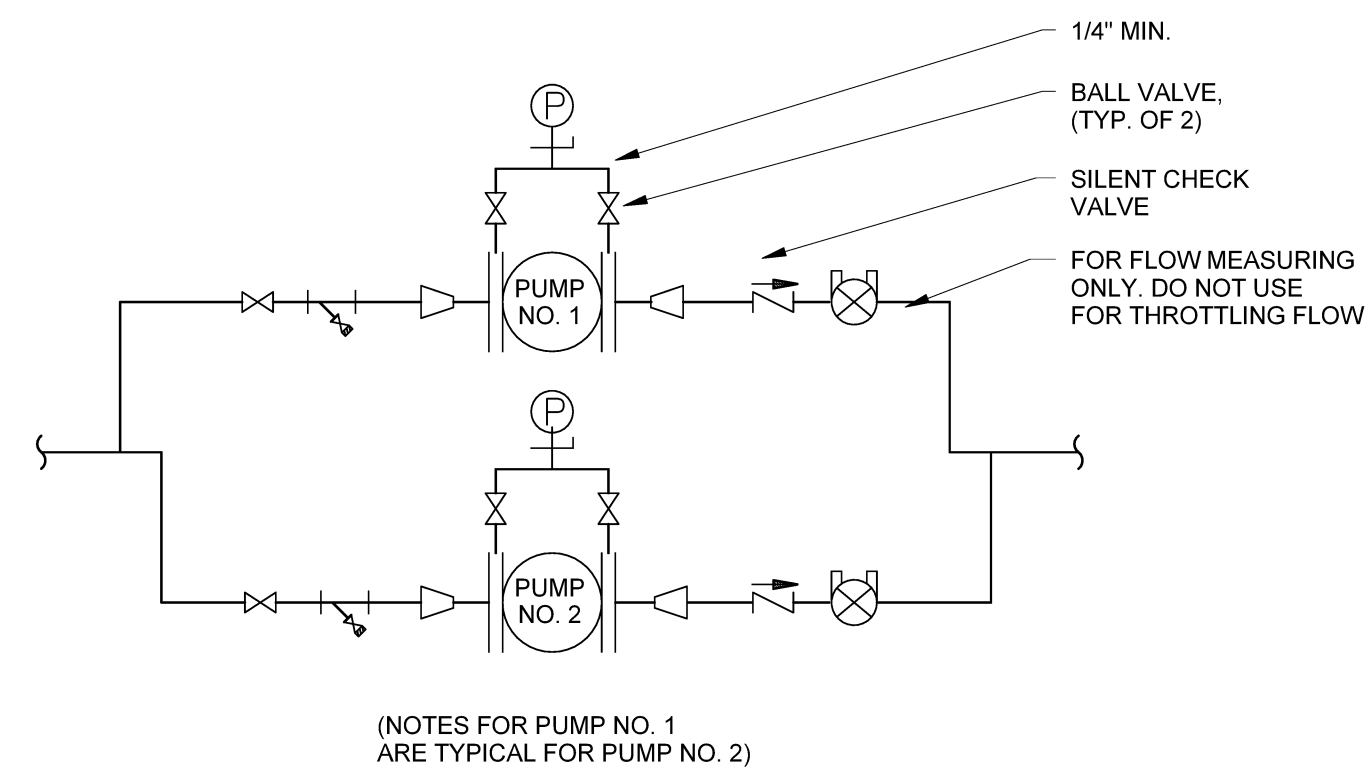
Harriman Project No. 15309

Key Plan

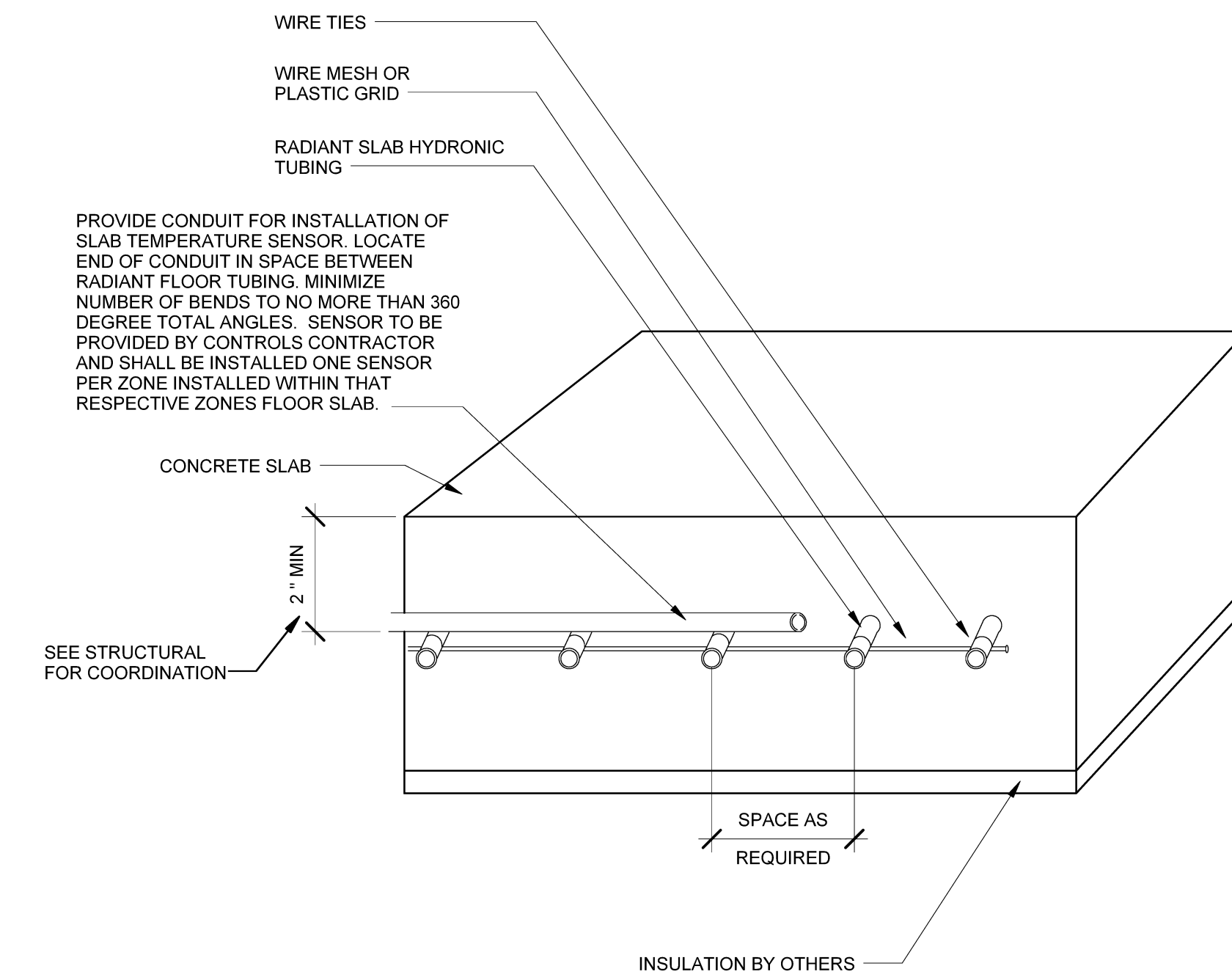
Proj North



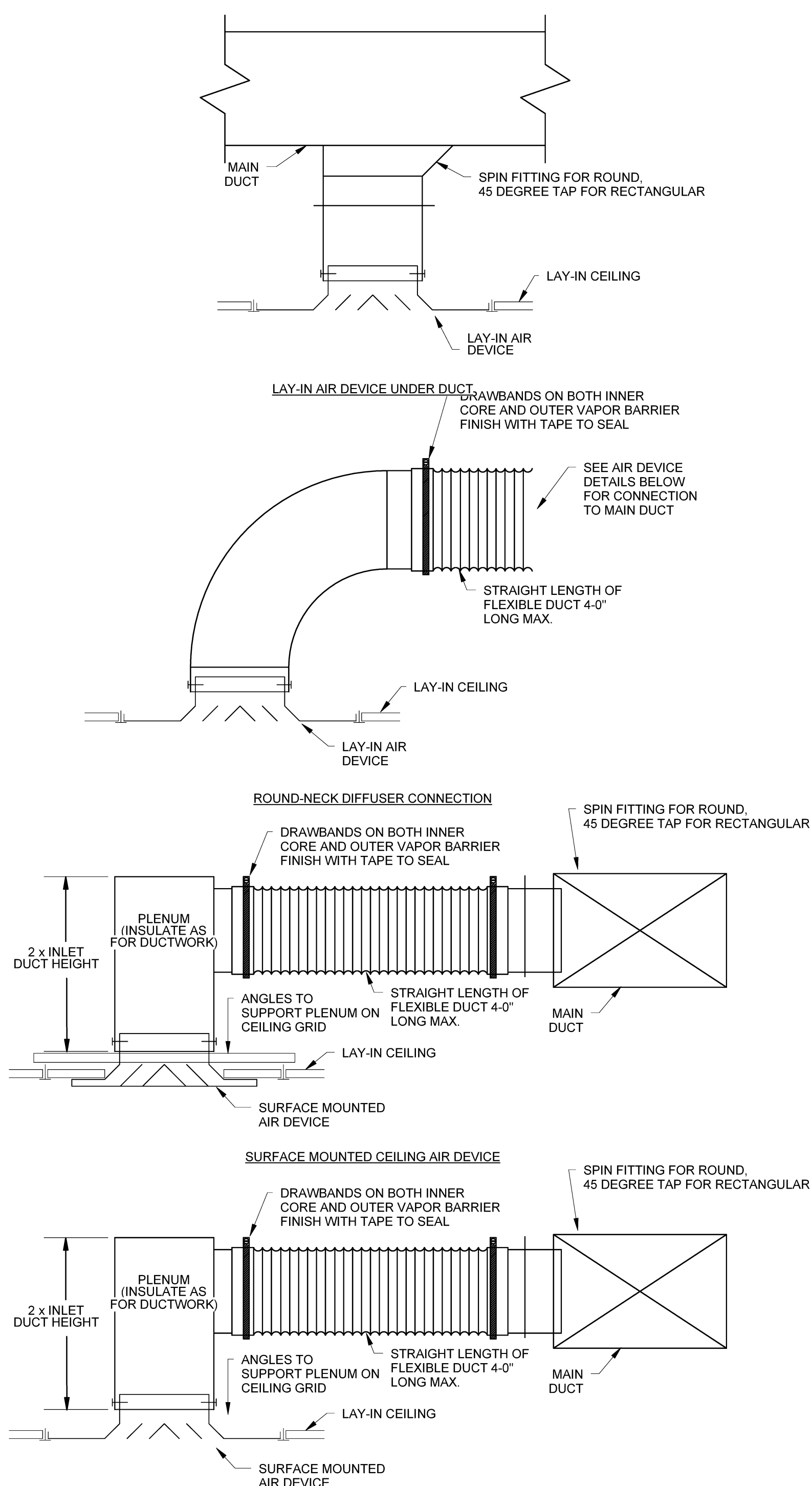
4 LOUVER CONNECTION
NO SCALE



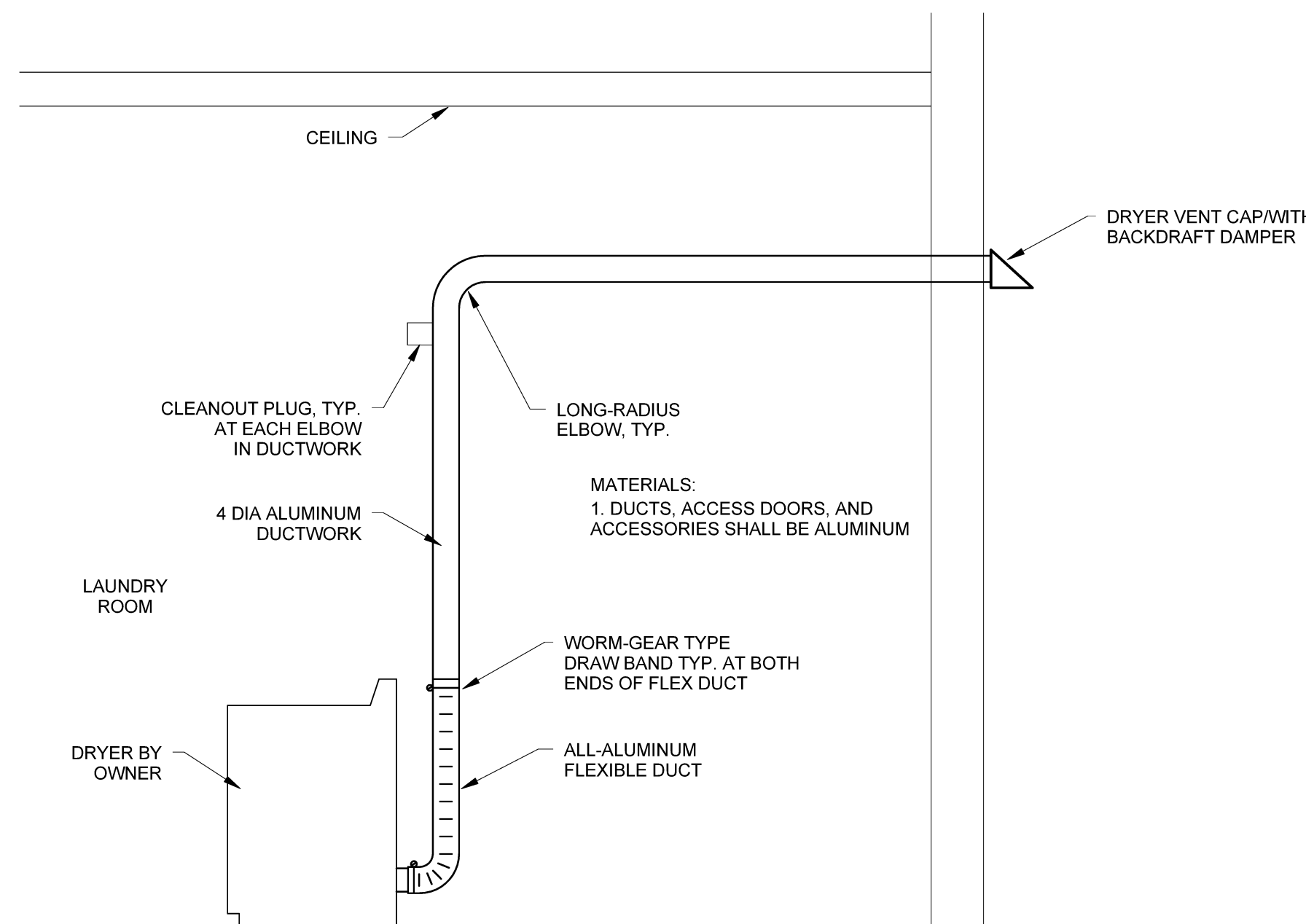
6 IN LINE PARALLEL PUMP
NO SCALE



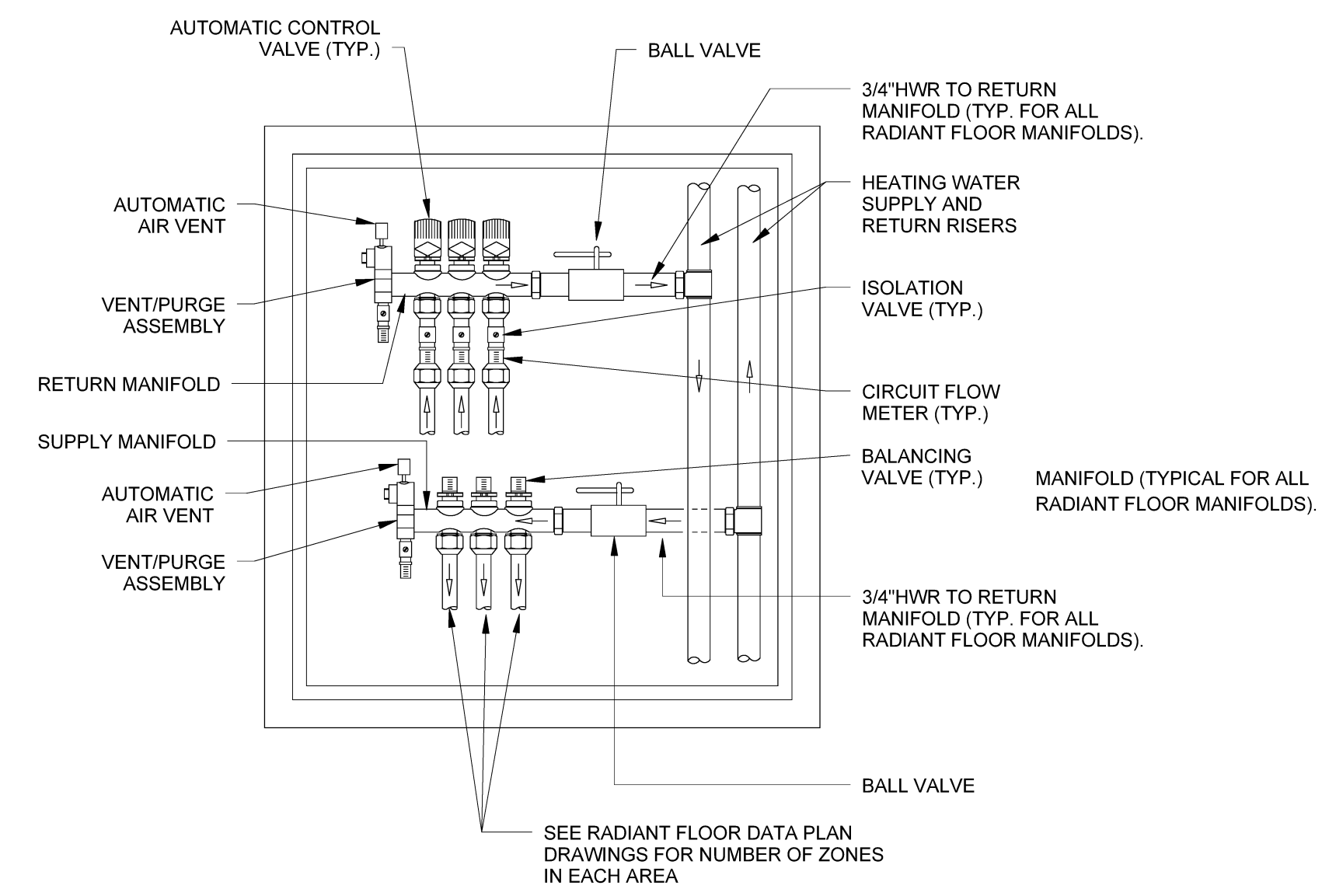
8 RADIANT FLOOR SLAB
NO SCALE



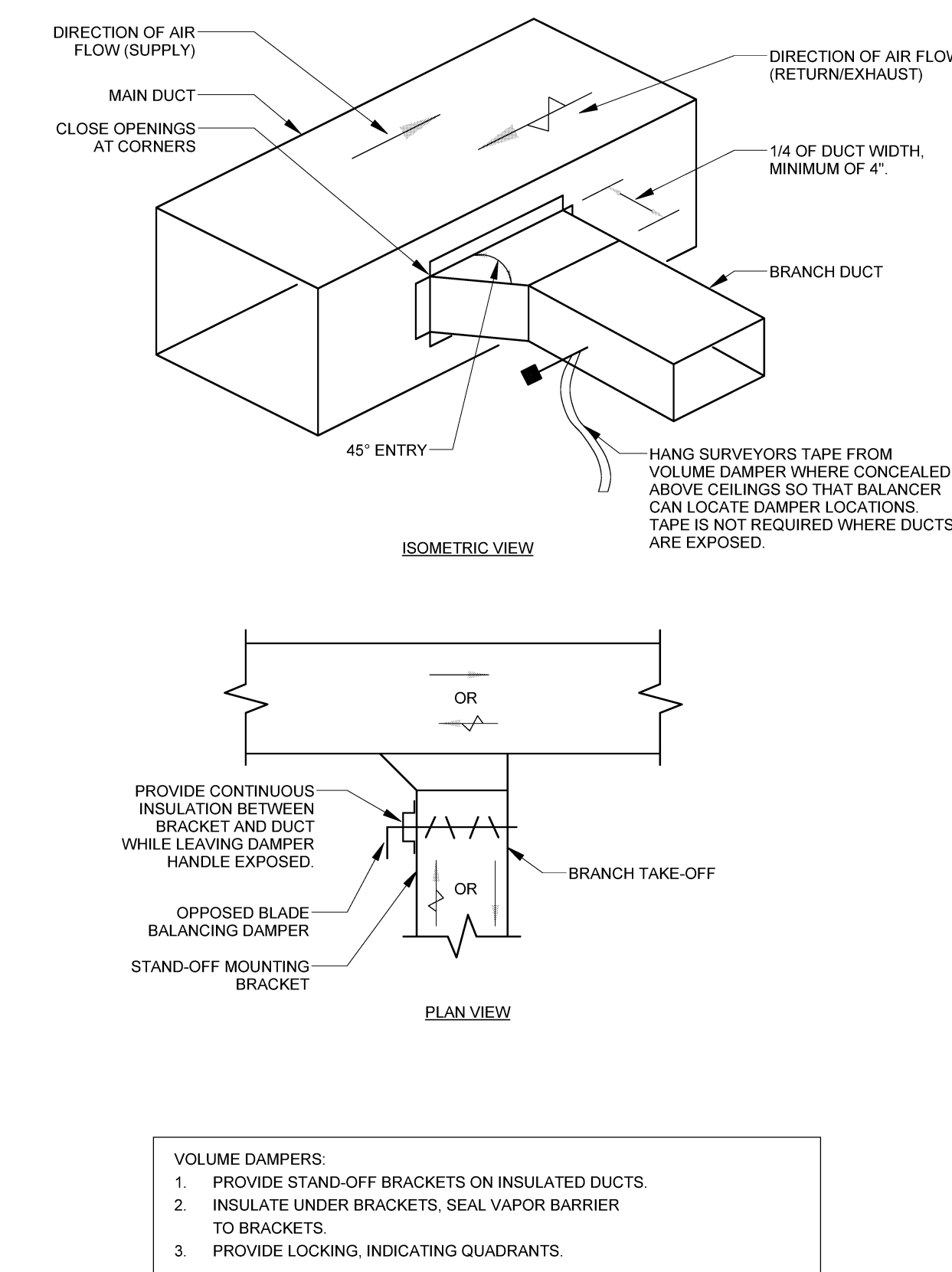
1 CEILING AIR DEVICE
NO SCALE



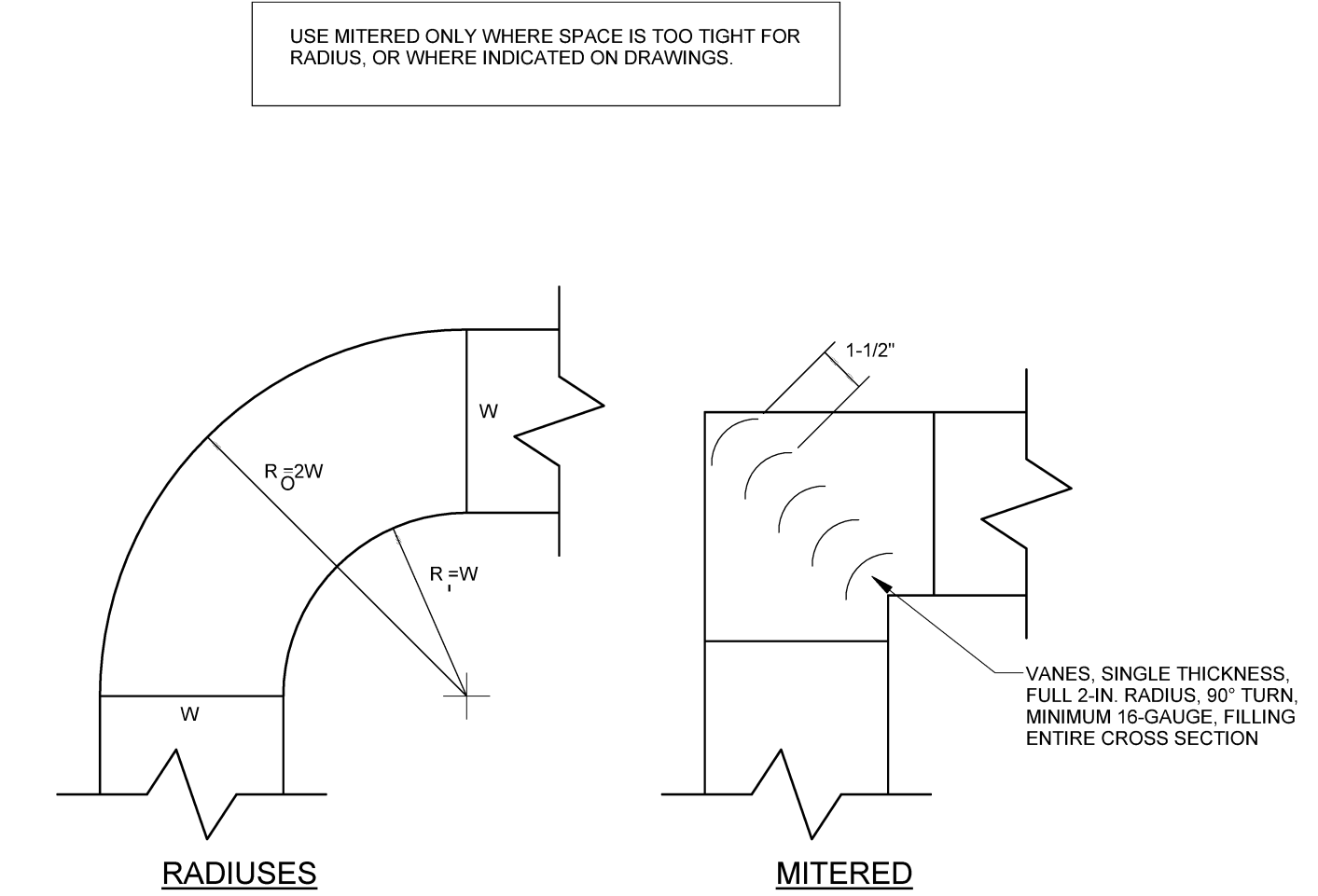
5 DRYER EXHAUST
NO SCALE



7 RADIANT FLOOR MANIFOLD
NO SCALE



2 SIDE BRANCH TAKE-OFF
NO SCALE

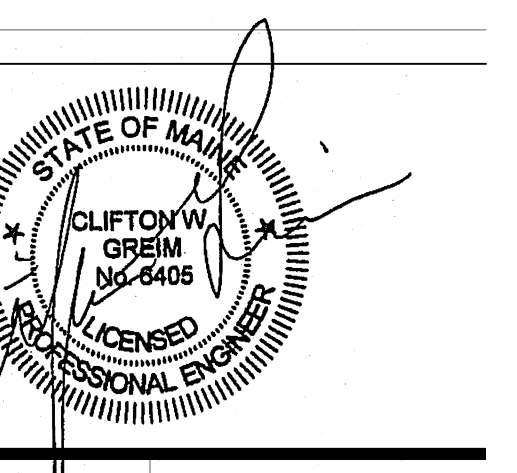


3 DUCT ELBOW
NO SCALE

- VOLUME DAMPERS:
1. PROVIDE STAND-OFF BRACKETS ON INSULATED DUCTS.
 2. INSULATE UNDER BRACKETS, SEAL VAPOR BARRIER TO BRACKETS.
 3. PROVIDE LOCKING, INDICATING QUADRANTS.

PRIOR TO INSTALLATION OF ANY ELBOWS, SUBMIT TO THE ENGINEER A SAMPLE OF EACH TYPE OF 90-DEGREE ELBOW, AT LEAST 12x12 DUCT SIZE, BUT MAY BE LARGER IF IT IS TO BE USED IN THE PROJECT. DELIVER TO THE ENGINEER'S OFFICE. ALLOW AT LEAST 1 WEEK NOTICE FOR REVIEW. APPROVED SAMPLES MAY BE RETURNED TO THE CONTRACTOR FOR USE IN THE PROJECT. PROVIDE RETURN SHIPPING SERVICES AS REQUIRED.

Mark	Date	Description
	03-25-16	CONSTRUCTION DOCUMENTS
1	04-21-16	ADDENDUM #2
3	07-22-16	CONFORMANCE SET



Drawing Scales	
NO SCALE	
PA / PE: CG	© 2016 Harriman Associates
Drawn By: MDHS	

DETAILS

M30.1