



HARRIMAN

AUBURN PORTLAND MANCHESTER

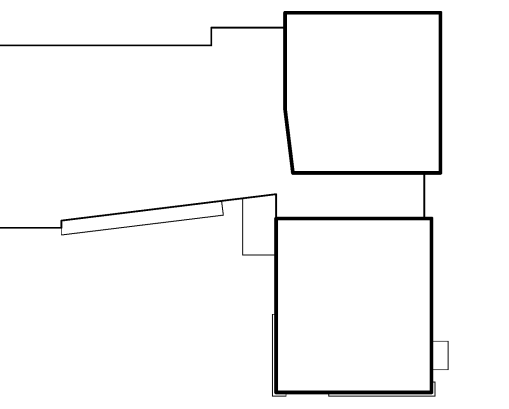
JEWISH COMMUNITY ALLIANCE OF SOUTHERN MAINE

PORTLAND, ME

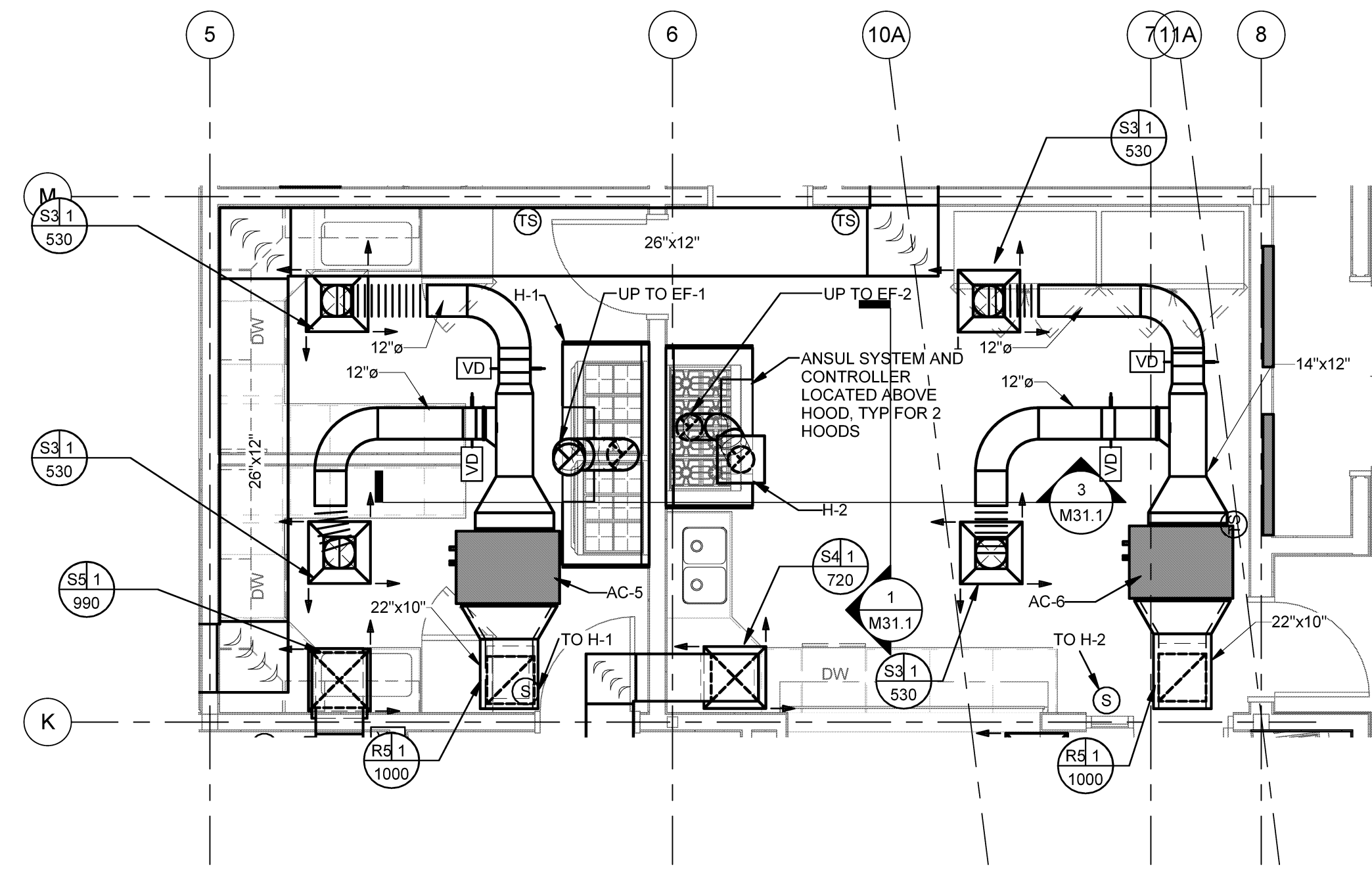
Harriman Project No. 15309

Key Plan

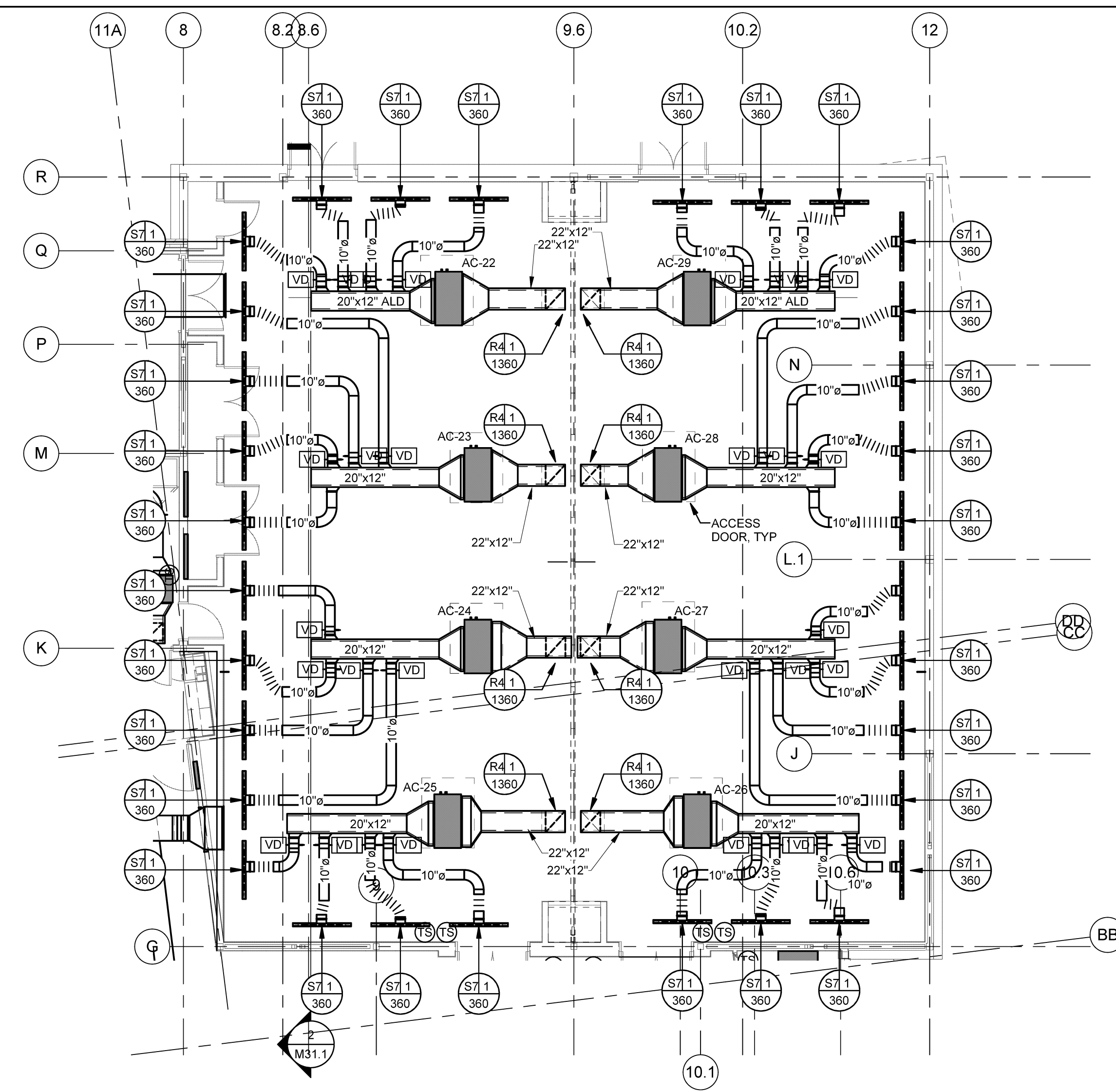
Proj North



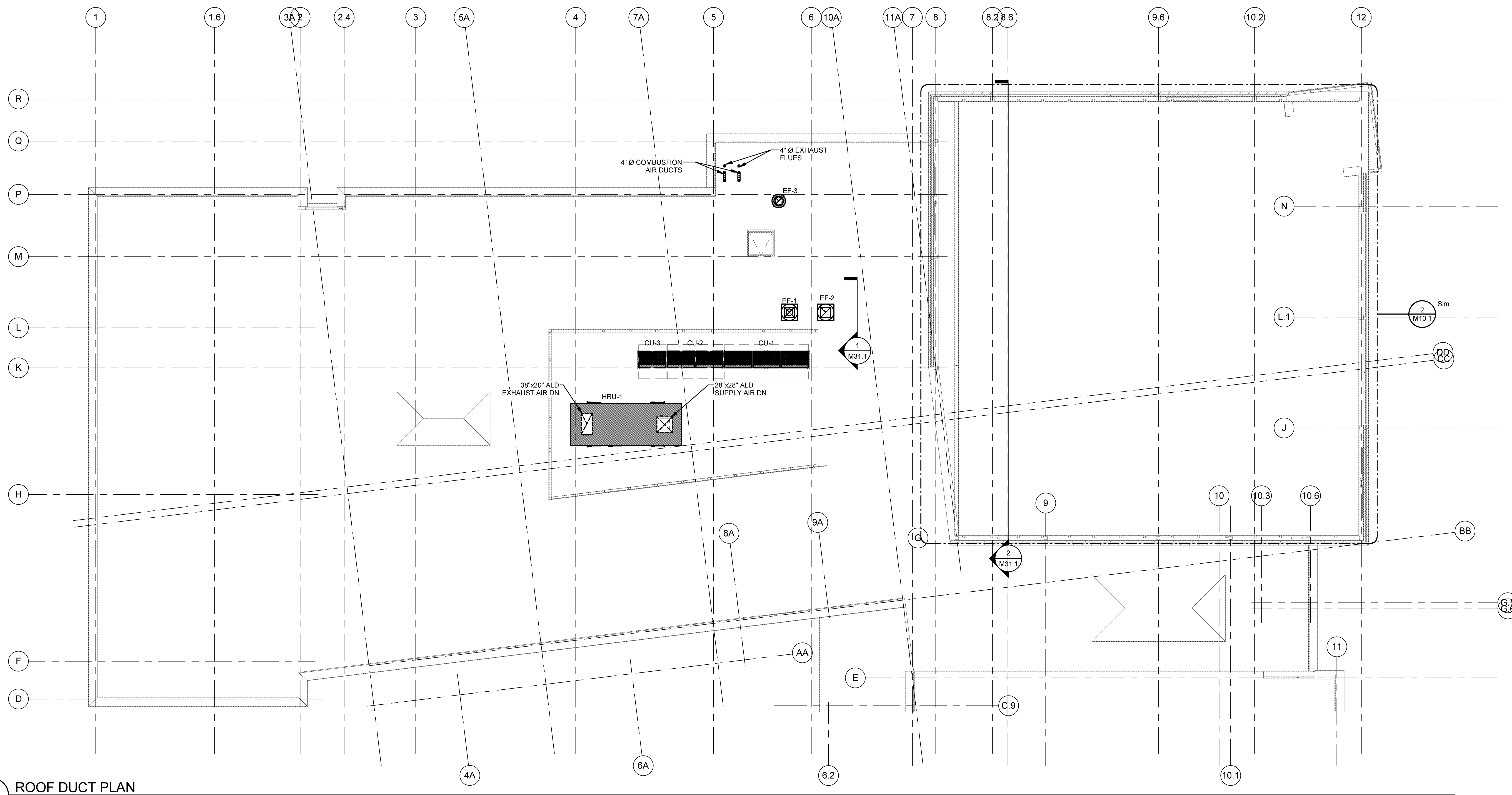
- ASSEMBLY HALL GENERAL NOTES:
1. THE DUCTWORK SHOWN HAS BEEN DESIGNED TO COORDINATE WITH THE GEOMETRY OF THE STEEL IF THE GEOMETRY OF THE STEEL CHANGES. CONTRACTOR TO COORDINATE GEOMETRY OF DUCTWORK TO COORDINATE WITH STEEL.
 2. SYSTEM SHALL BE BALANCED AND OPERATIONAL BEFORE CEILING SYSTEM IS INSTALLED.
 3. ALL VOLUME DAMPERS SHALL BE CABLE ACTUATED TO ALLOW FOR ADJUSTING OF DAMPERS WITHOUT REMOVAL OF CEILING.
 4. PROVIDE BLANK LINEAR DIFFUSERS AND BLANK INTAKES TO PROVIDE THE APPEARANCE OF A CONTINUOUS DIFFUSER AROUND THE PERIMETER OF THE AREA.



3 KITCHEN AREA DUCTWORK PART PLAN
NO SCALE

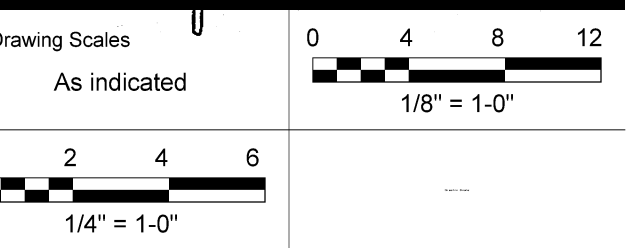
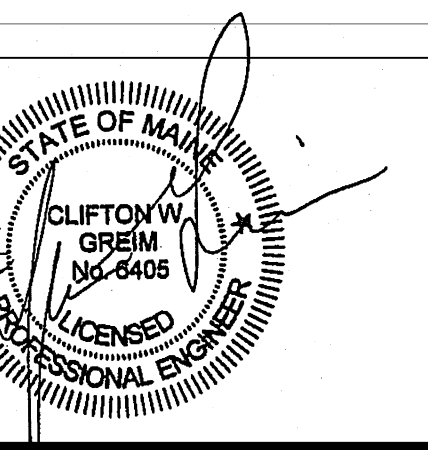


2 ASSEMBLY HALL DUCTWORK PART PLAN
NO SCALE



1 ROOF DUCT PLAN
NO SCALE

Mark	Date	Description
	09-04-15	DESIGN DEVELOPMENT REVIEW
	03-25-16	CONSTRUCTION DOCUMENTS
3	07-22-16	CONFORMANCE SET



PA/PE: CG © 2016 Harriman Associates
Drawn By: JSL

DUCTWORK PART PLANS

M10.1