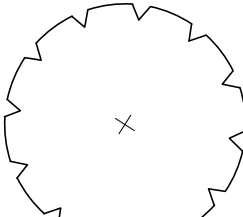
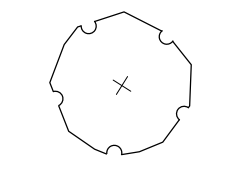
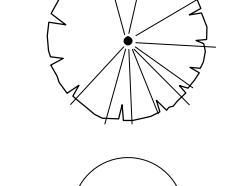
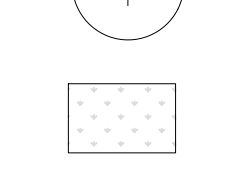
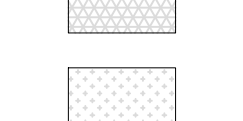

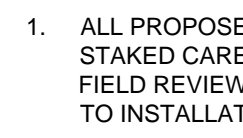
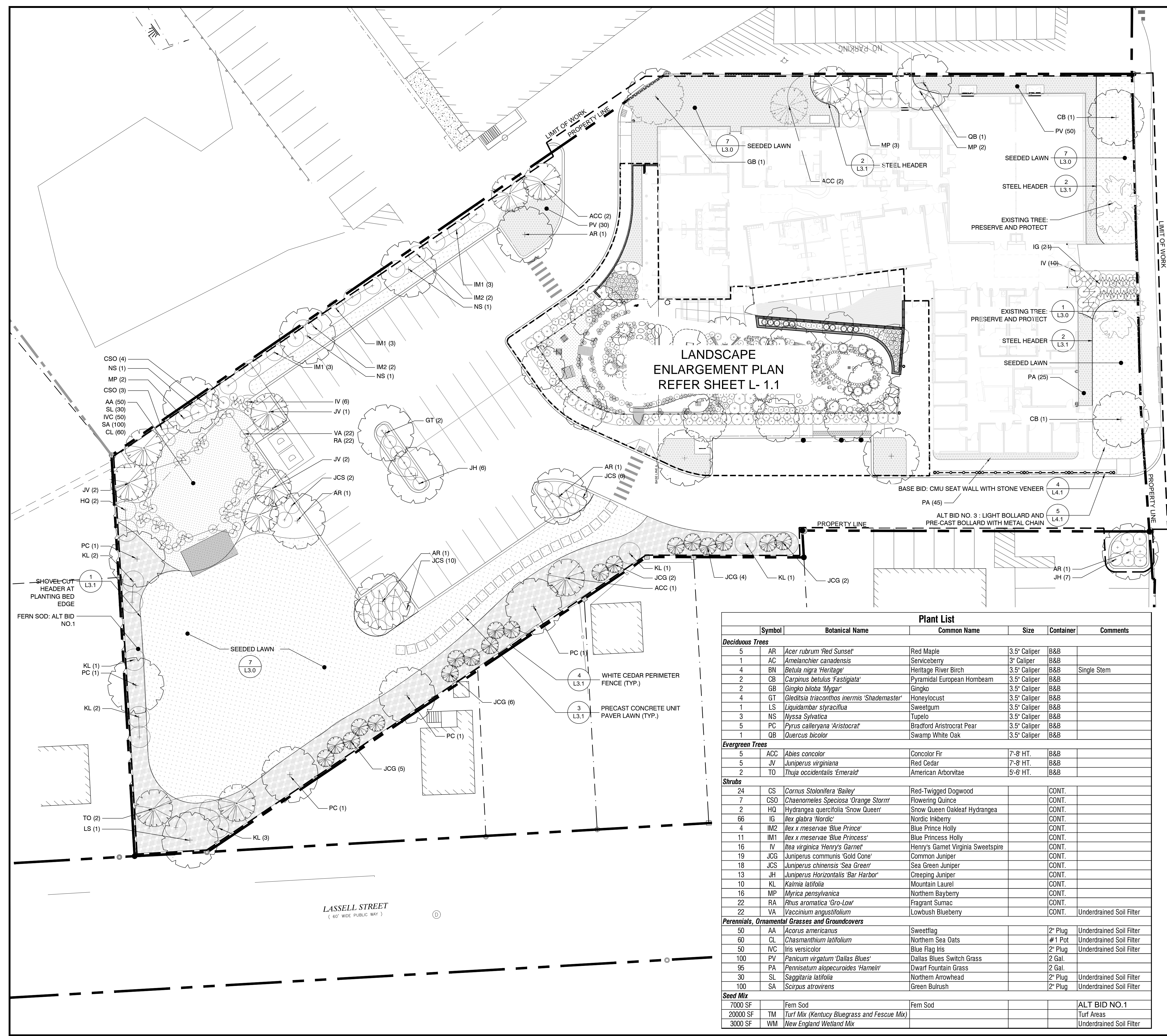


LEGEND

-  CANOPY TREE
-  ORNAMENTAL TREE
-  EVERGREEN TREE
-  SHRUB
-  TURF
-  ORNAMENTAL GRASSES / GROUNDCOVER
-  RAIN GARDEN PLANTING AREA

PLANTING NOTES:

1. ALL PROPOSED PLANTING LOCATIONS SHALL BE STAKED CAREFULLY AS SHOWN ON THE PLANS FOR FIELD REVIEW BY THE LANDSCAPE ARCHITECT PRIOR TO INSTALLATION.
2. CONTRACTOR SHALL VERIFY LOCATIONS OF ALL UTILITIES AND NOTIFY OWNERS' REPRESENTATIVE OF ANY CONFLICTS.
3. NO PLANT MATERIALS SHALL BE INSTALLED UNTIL ALL GRADING AND CONSTRUCTION HAS BEEN COMPLETED IN THE IMMEDIATE AREA.
4. A 3-INCH COMPOST MULCH LAYER SHALL BE INSTALLED UNDER ALL TREES AND SHRUBS, AND IN ALL PLANTING BEDS, AS SHOWN ON THE PLANS, OR AS DIRECTED BY THE LANDSCAPE ARCHITECT.
5. ALL TREES SHALL BE BALLED AND BURLAPPED, UNLESS OTHERWISE NOTED, OR APPROVED BY THE LANDSCAPE ARCHITECT.
6. FINAL QUANTITY FOR EACH PLANT TYPE SHALL BE AS SHOWN ON THE PLAN. THIS NUMBER SHALL TAKE PRECEDENCE IN CASE OF ANY DISCREPANCY BETWEEN QUANTITIES SHOWN ON THE PLANT LIST AND ON THE PLAN. THE CONTRACTOR SHALL REPORT ANY DISCREPANCIES BETWEEN THE NUMBER OF PLANTS SHOWN ON THE PLAN AND PLANT LABELS PRIOR TO CONSTRUCTION.
7. ANY PROPOSED PLANT SUBSTITUTIONS MUST BE APPROVED IN WRITING BY THE LANDSCAPE ARCHITECT.
8. ALL PLANT MATERIALS INSTALLED SHALL MEET OR EXCEED THE SPECIFICATIONS OF THE 'AMERICAN STANDARDS FOR NURSERY STOCK' BY THE AMERICAN ASSOCIATION OF NURSERYMEN.
9. ALL TREES SHALL BE SUFFICIENTLY STAKED FOR TWO FULL YEARS. CONTRACTOR SHALL NOTIFY THE CLIENT IN WRITING OF DATE TO BE REMOVED. SEE DETAIL.
10. ALL PLANT MATERIALS SHALL BE GUARANTEED FOR ONE YEAR FOLLOWING DATE OF SIGNED FINAL ACCEPTANCE LETTER BY THE LANDSCAPE ARCHITECT.
11. CONTRACTOR SHALL NOT STORE VEHICLES OR MATERIALS WITHIN THE LANDSCAPE AREAS OR AS NOTED OTHERWISE ON THE PLANS. ANY DAMAGE TO EXISTING TREES, SHRUBS, OR LAWNS SHALL BE REPAIRED BY THE CONTRACTOR AT NO ADDITIONAL COST TO THE OWNER.
12. LOAM AND SEED ALL AREAS NOT OTHERWISE TREATED.
13. PLANTING PLANS ARE INTENDED FOR LANDSCAPING PURPOSES ONLY.



LANDSCAPE ENLARGEMENT PLAN  
REFER SHEET L-1.1

Plant List

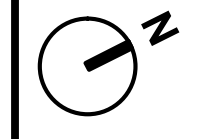
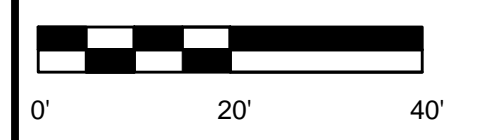
Symbol	Botanical Name	Common Name	Size	Container	Comments
<b>Deciduous Trees</b>					
5 AR	<i>Acer rubrum</i> 'Red Sunset'	Red Maple	3.5" Caliper	B&B	
1 AC	<i>Amelanchier canadensis</i>	Serviceberry	3" Caliper	B&B	
4 BN	<i>Betula nigra</i> 'Heritage'	Heritage River Birch	3.5" Caliper	B&B	Single Stem
2 CB	<i>Carpinus betulus</i> 'Fastigiata'	Pyramidal European Hornbeam	3.5" Caliper	B&B	
2 GB	<i>Ginkgo biloba</i> 'Mycar'	Ginkgo	3.5" Caliper	B&B	
4 GT	<i>Gleditsia triacanthos inermis</i> 'Shademaster'	Honeylocust	3.5" Caliper	B&B	
1 LS	<i>Liquidambar styraciflua</i>	Sweetgum	3.5" Caliper	B&B	
3 NS	<i>Nyssa sylvatica</i>	Tupelo	3.5" Caliper	B&B	
5 PC	<i>Pyrus calleryana</i> 'Aristocrat'	Bradford Aristocrat Pear	3.5" Caliper	B&B	
1 QB	<i>Quercus bicolor</i>	Swamp White Oak	3.5" Caliper	B&B	
<b>Evergreen Trees</b>					
5 ACC	<i>Abies concolor</i>	Concolor Fir	7'-8' HT.	B&B	
5 JV	<i>Juniperus virginiana</i>	Red Cedar	7'-8' HT.	B&B	
2 TO	<i>Thuja occidentalis</i> 'Emerald'	American Arborvitae	5'-6' HT.	B&B	
<b>Shrubs</b>					
24 CS	<i>Cornus stolonifera</i> 'Bailey'	Red-Twigged Dogwood		CONT.	
7 CSO	<i>Chaenomeles speciosa</i> 'Orange Storm'	Flowering Quince		CONT.	
2 HQ	<i>Hydrangea quercifolia</i> 'Snow Queen'	Snow Queen Oakleaf Hydrangea		CONT.	
66 IG	<i>Ilex glabra</i> 'Nordic'	Nordic Inkberry		CONT.	
4 IM2	<i>Ilex x meservae</i> 'Blue Prince'	Blue Prince Holly		CONT.	
11 IM1	<i>Ilex x meservae</i> 'Blue Princess'	Blue Princess Holly		CONT.	
16 IV	<i>Itea virginica</i> 'Henry's Garnet'	Henry's Garnet Virginia Sweetspire		CONT.	
19 JCG	<i>Juniperus communis</i> 'Gold Cone'	Common Juniper		CONT.	
18 JCS	<i>Juniperus chinensis</i> 'Sea Green'	Sea Green Juniper		CONT.	
13 JH	<i>Juniperus horizontalis</i> 'Bar Harbor'	Creeping Juniper		CONT.	
10 KL	<i>Kalmia latifolia</i>	Mountain Laurel		CONT.	
16 MP	<i>Myrica pensylvanica</i>	Northern Bayberry		CONT.	
22 RA	<i>Rhus aromatica</i> 'Gro-Low'	Fragrant Sumac		CONT.	
22 VA	<i>Vaccinium angustifolium</i>	Lowbush Blueberry		CONT.	Underdrained Soil Filter
<b>Perennials, Ornamental Grasses and Groundcovers</b>					
50 AA	<i>Acorus americanus</i>	Sweetflag	2" Plug		Underdrained Soil Filter
60 CL	<i>Chasmanthium latifolium</i>	Northern Sea Oats	#1 Pot		Underdrained Soil Filter
50 IVC	<i>Iris versicolor</i>	Blue Flag Iris	2" Plug		Underdrained Soil Filter
100 PV	<i>Panicum virgatum</i> 'Dallas Blues'	Dallas Blues Switch Grass	2 Gal.		
95 PA	<i>Pennisetum alopecuroides</i> 'Hamel'	Dwarf Fountain Grass	2 Gal.		
30 SL	<i>Sagittaria latifolia</i>	Northern Arrowhead	2" Plug		Underdrained Soil Filter
100 SA	<i>Scirpus atrovirens</i>	Green Bulrush	2" Plug		Underdrained Soil Filter
<b>Seed Mix</b>					
7000 SF	Fern Sod	Fern Sod			ALT BID NO.1
20000 SF	TM Turf Mix (Kentucky Bluegrass and Fescue Mix)				Turf Areas
3000 SF	WM New England Wetland Mix				Underdrained Soil Filter

Jewish Community Alliance of Southern Maine

Proposed Neighborhood Center

Portland, Maine  
July 11, 2016

LANDSCAPE PLANS



05-04-16	ADDENDUM #1	
04-21-16	ADDENDUM #2	
03-25-16	ISSUED FOR BID	
Mark	Date	Description
PROJECT NO: J-0096		
FILE:		
DRAWN BY: OP / ARW		CHECKED: HS
APPROVED BY:		

LANDSCAPE PLAN

SCALE: 1" = 20'-0"

L-1.0