



HARRIMAN

AUBURN PORTLAND MANCHESTER

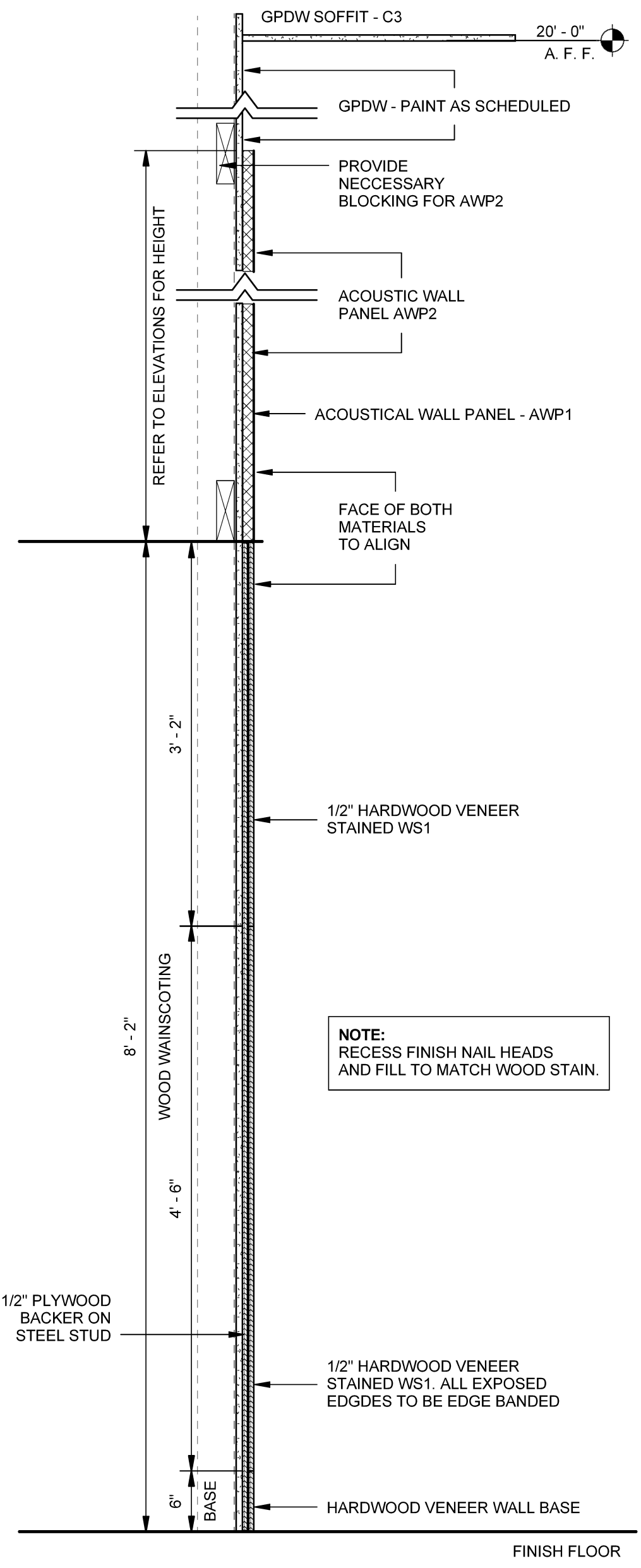
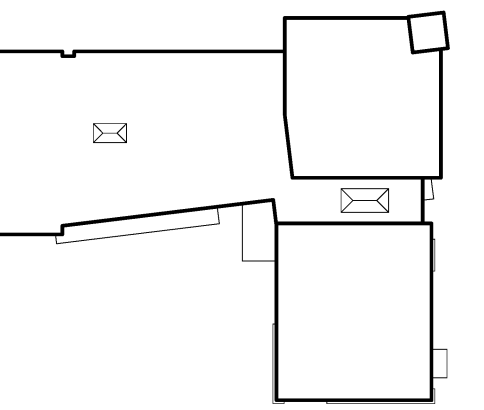
JEWISH COMMUNITY ALLIANCE OF SOUTHERN MAINE

PORTLAND, ME

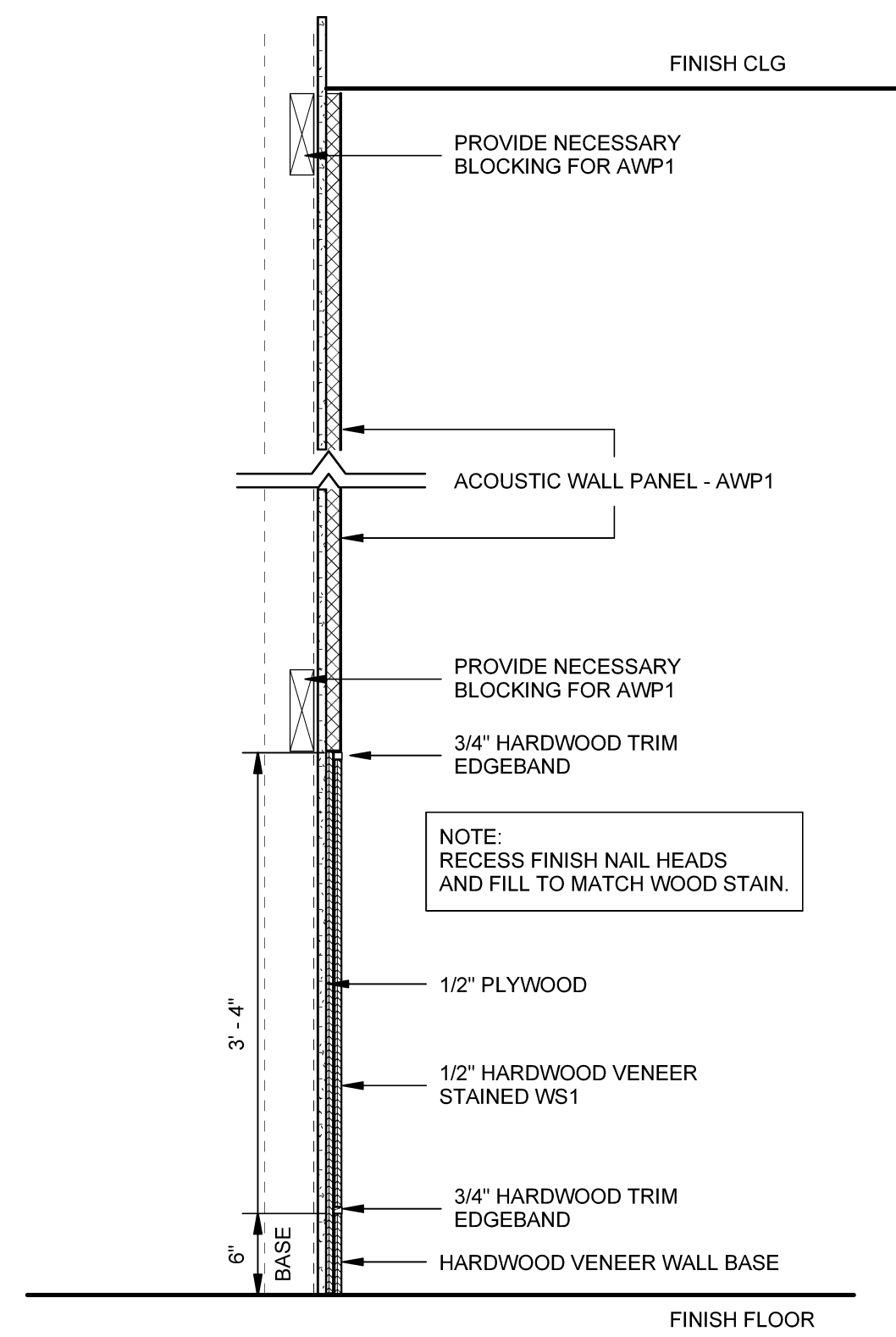
Harriman Project No. 15309

Key Plan

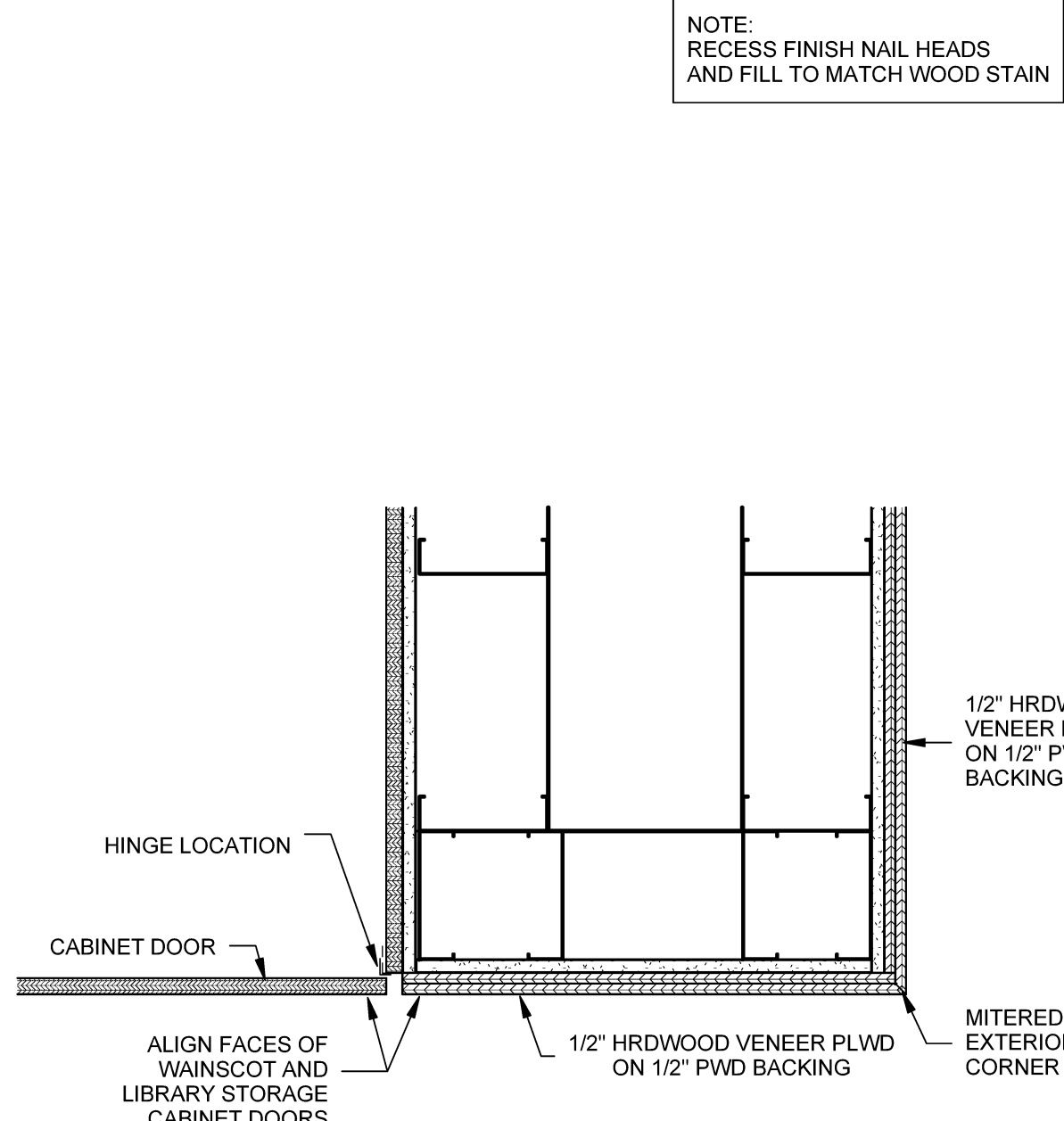
Proj North



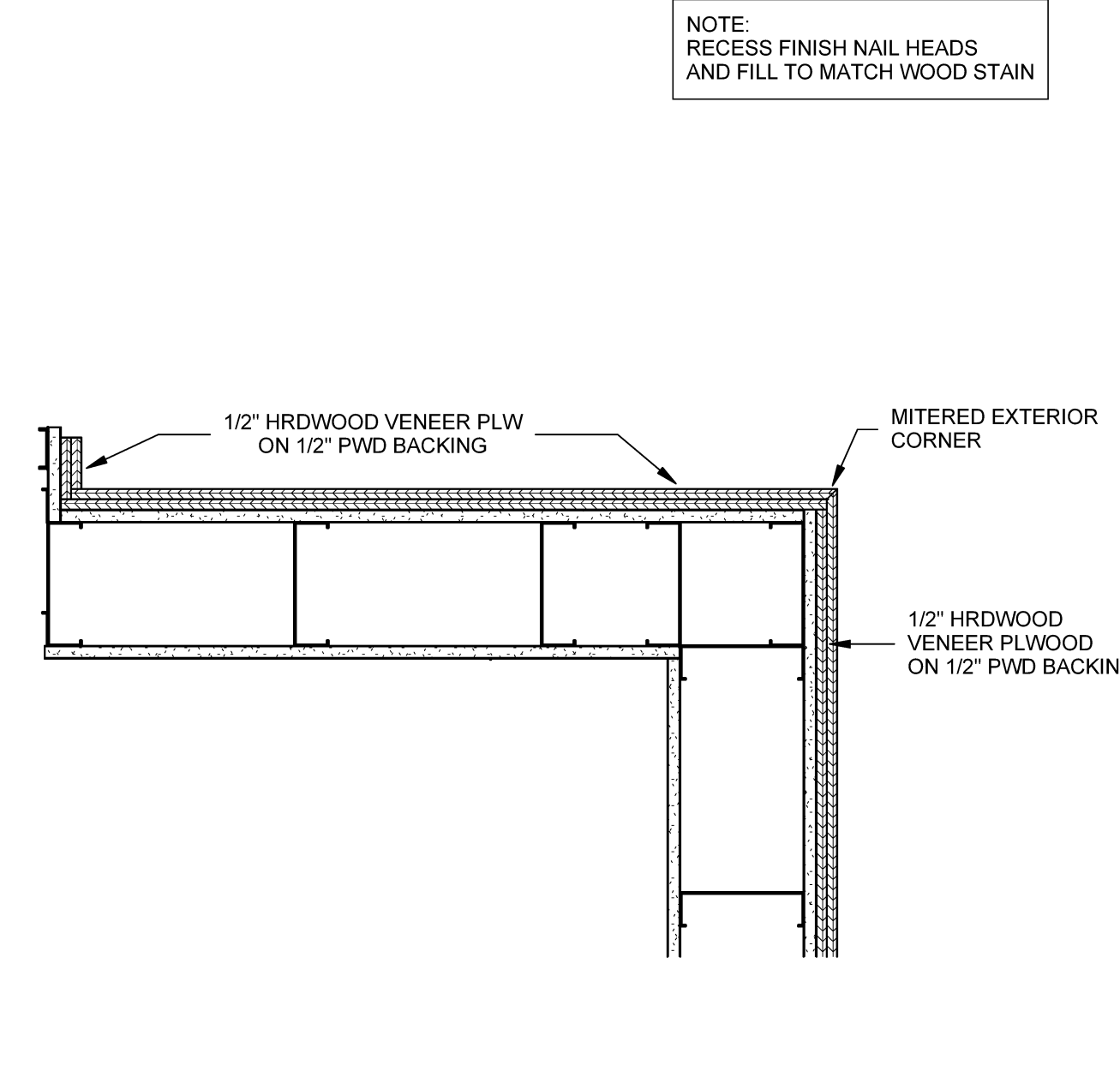
B1 WAINSCOT SECTION - ASSEMBLY HALL



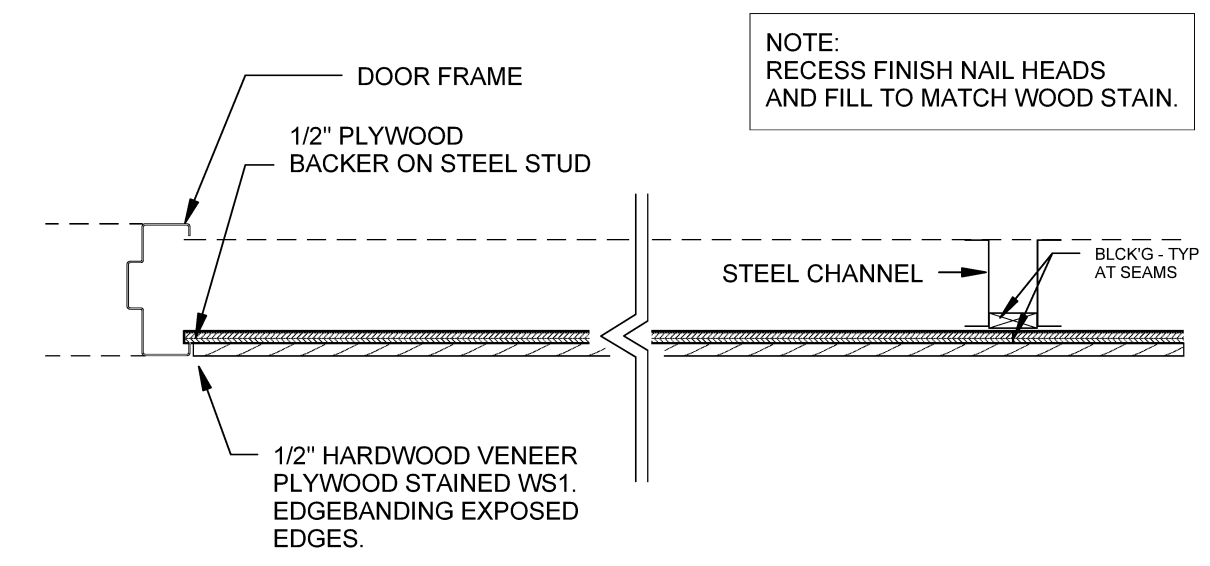
D2 WAINSCOT SECTION - LIBRARY



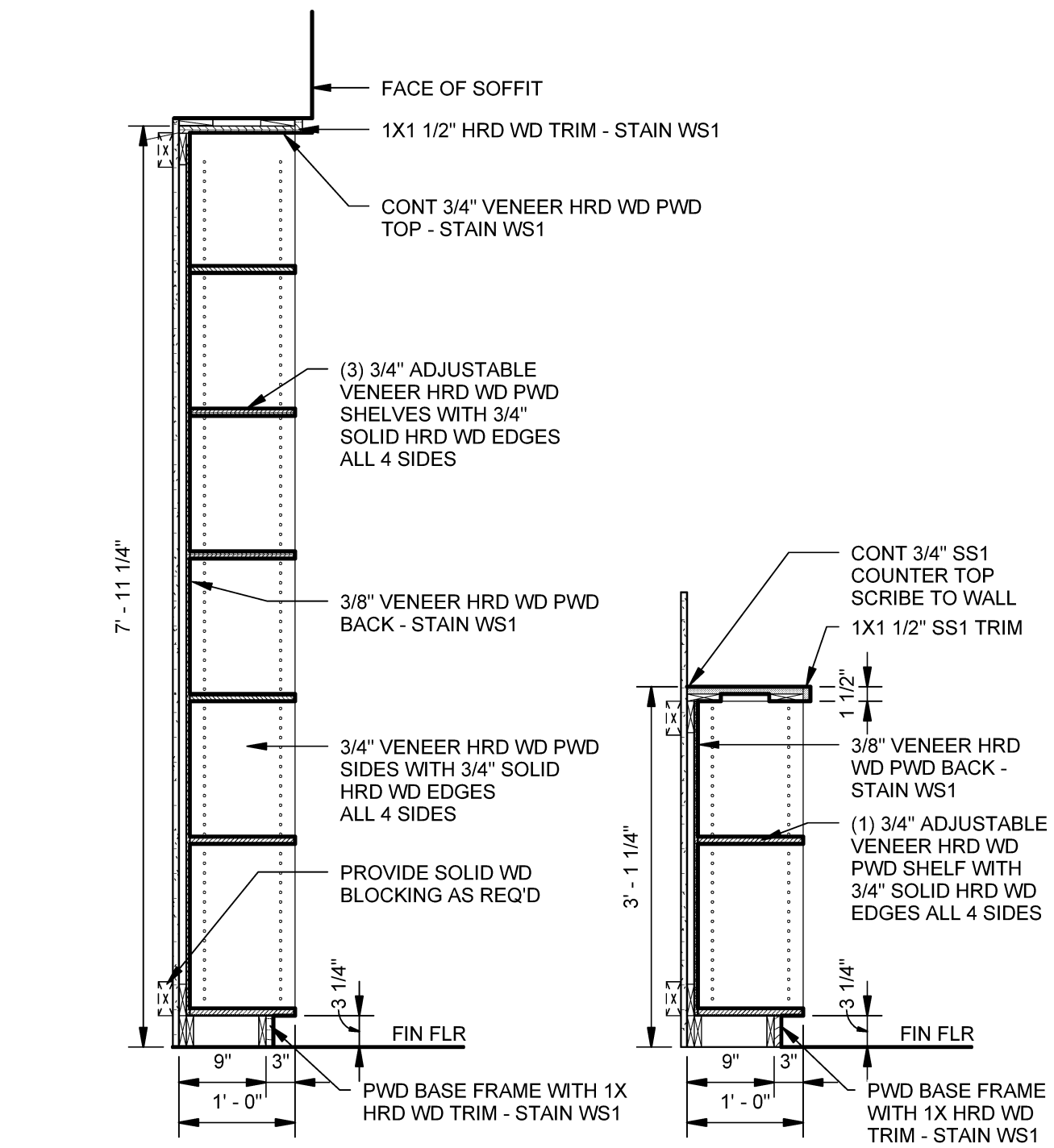
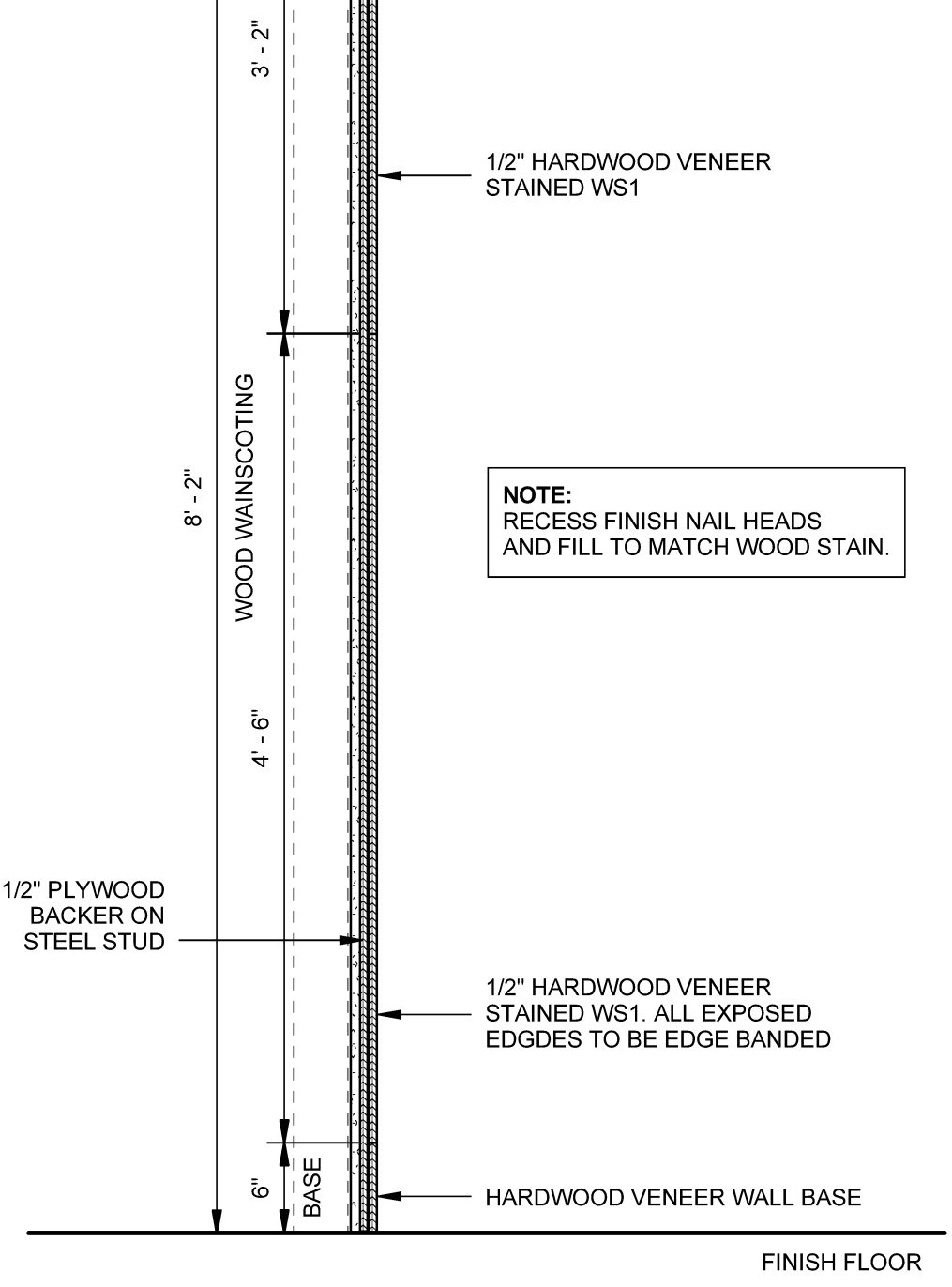
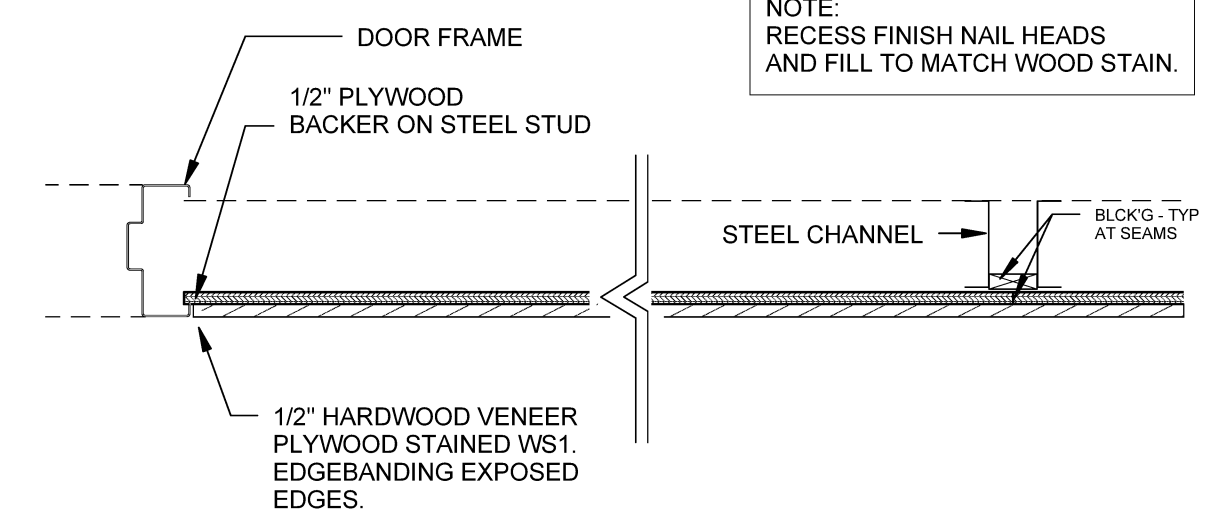
D3 WAINSCOT SECTION DETAIL



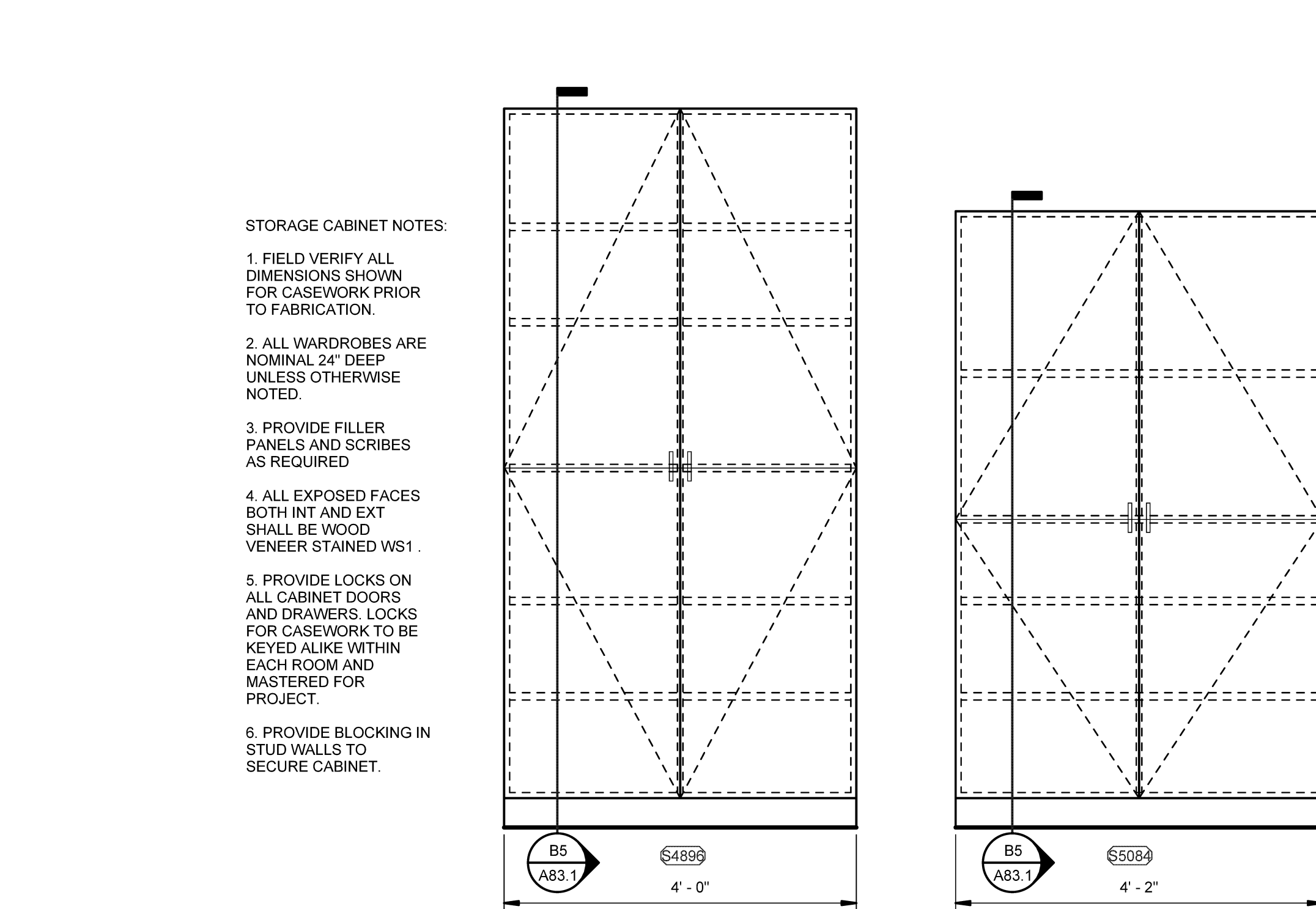
D4 WAINSCOT SECTION EXTERIOR CORNER



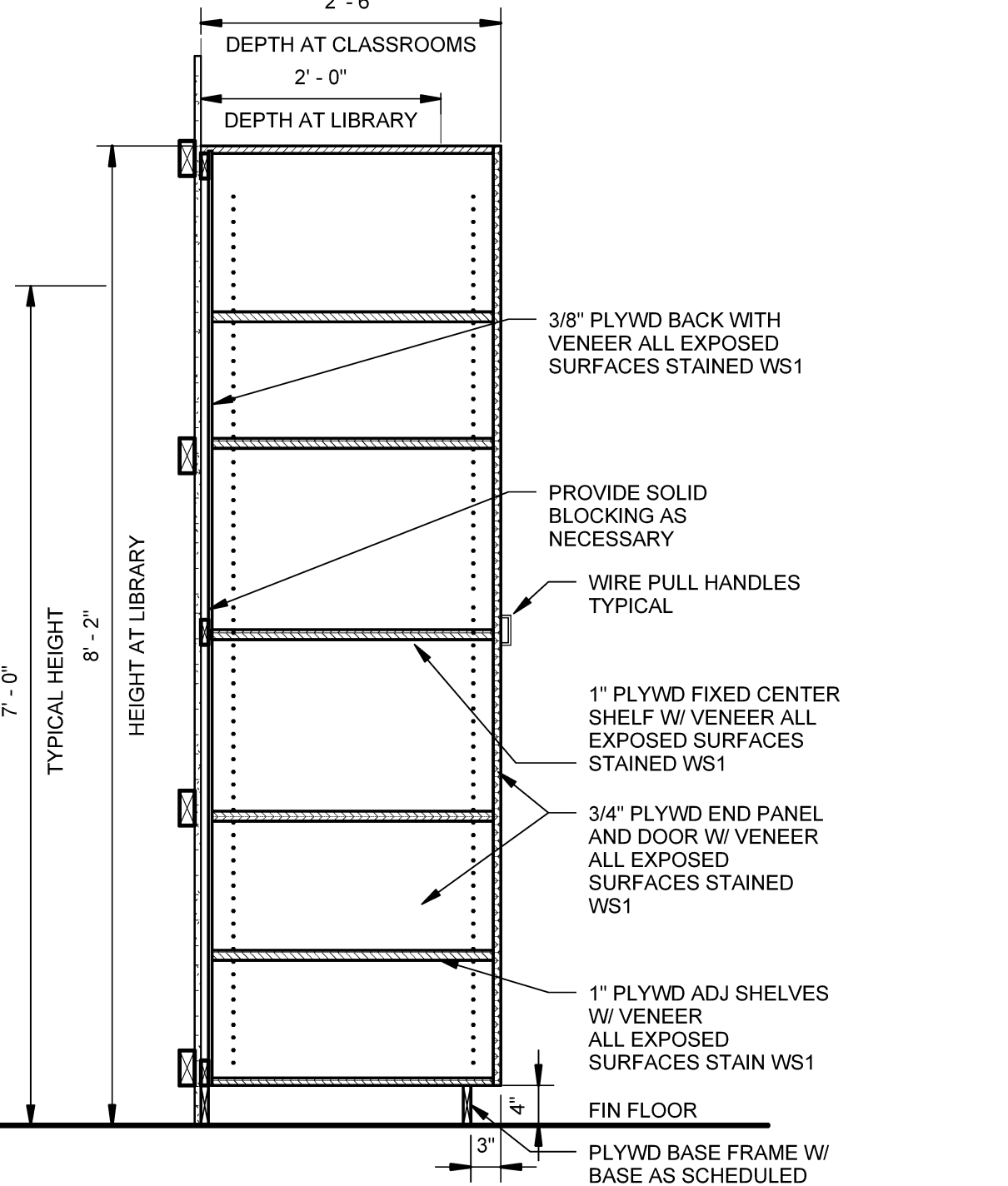
D5 WAINSCOT SECTION PLAN VIEW



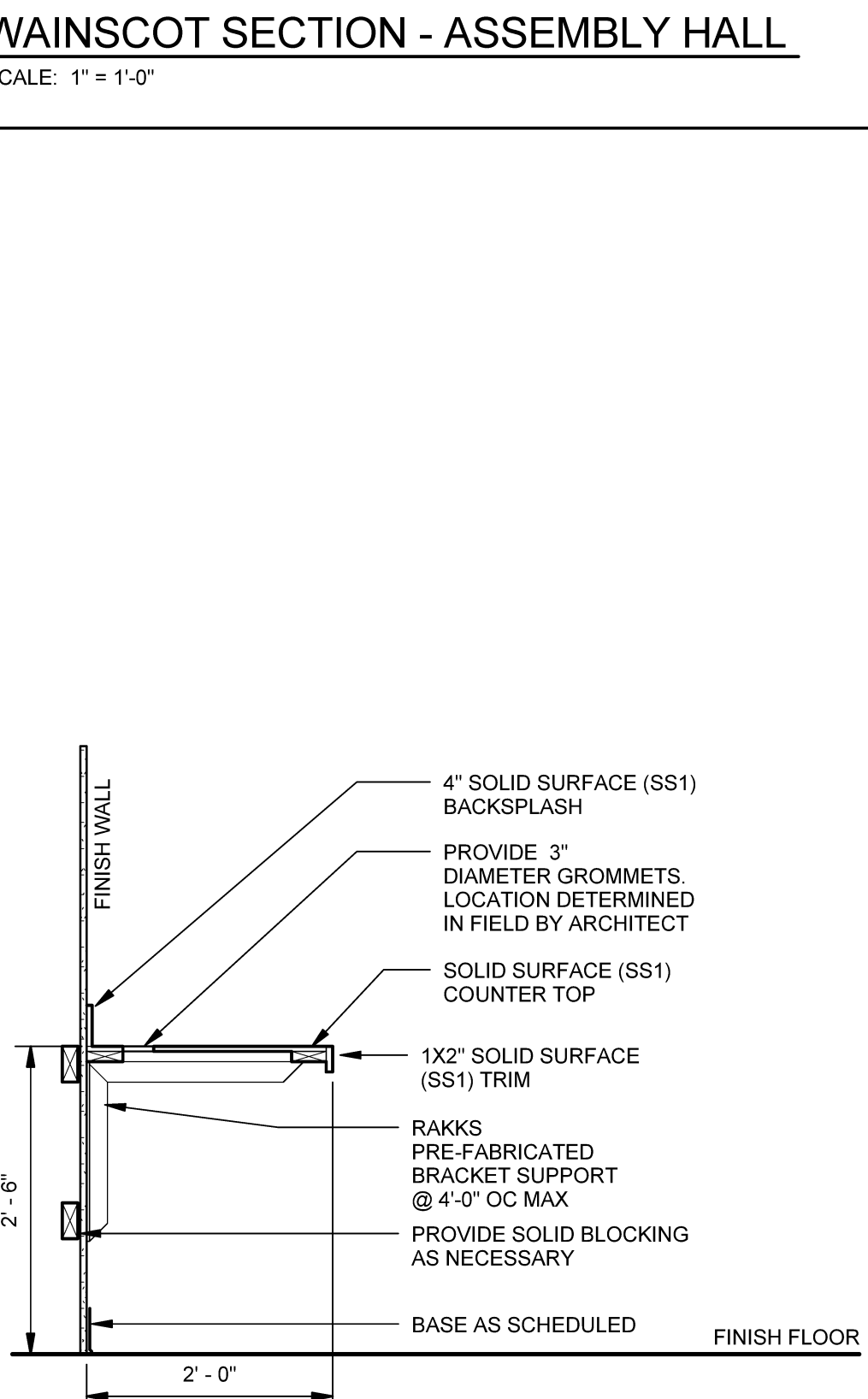
B2 LIBRARY BOOKSHELVES DETAIL



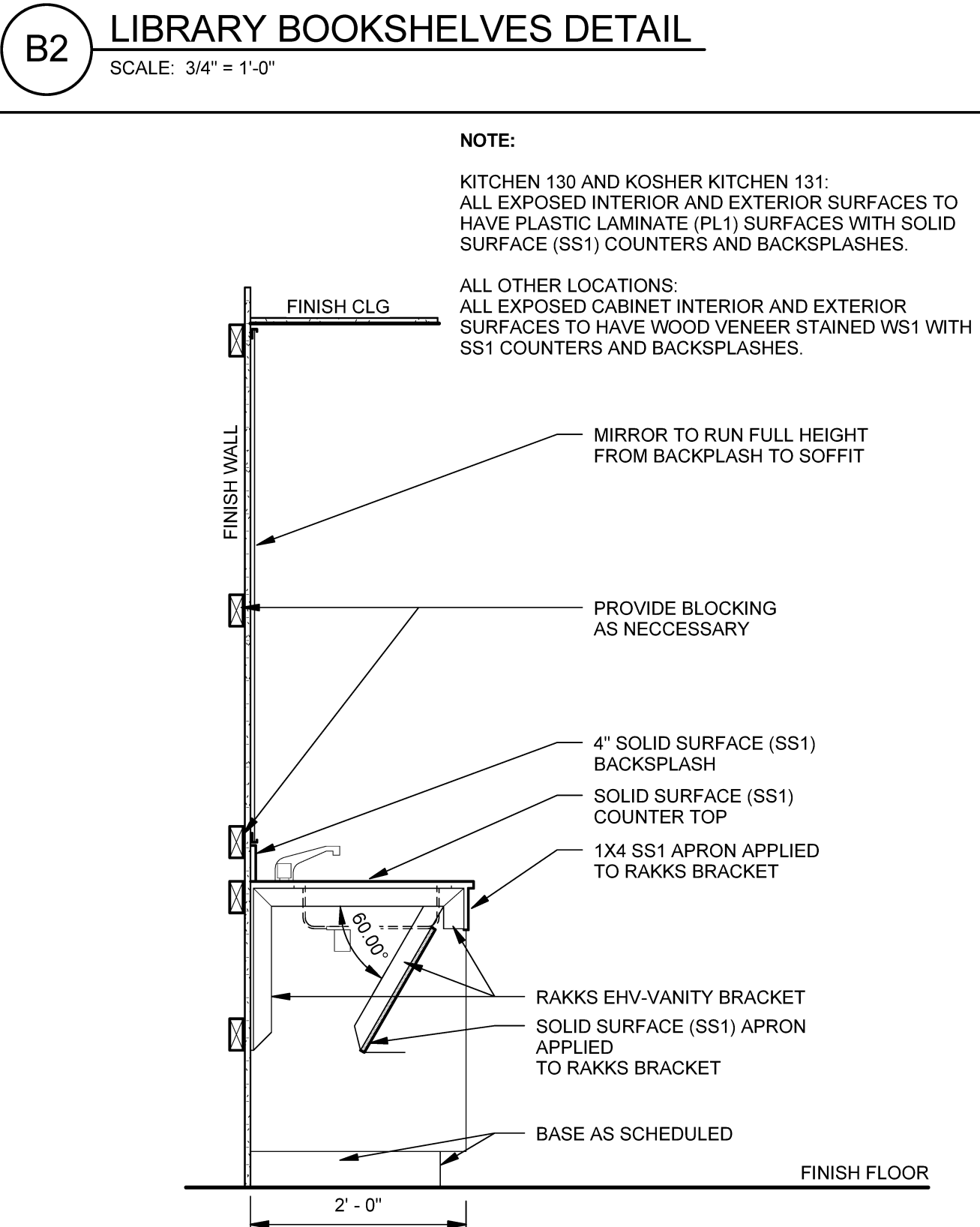
B3 STORAGE DETAILS



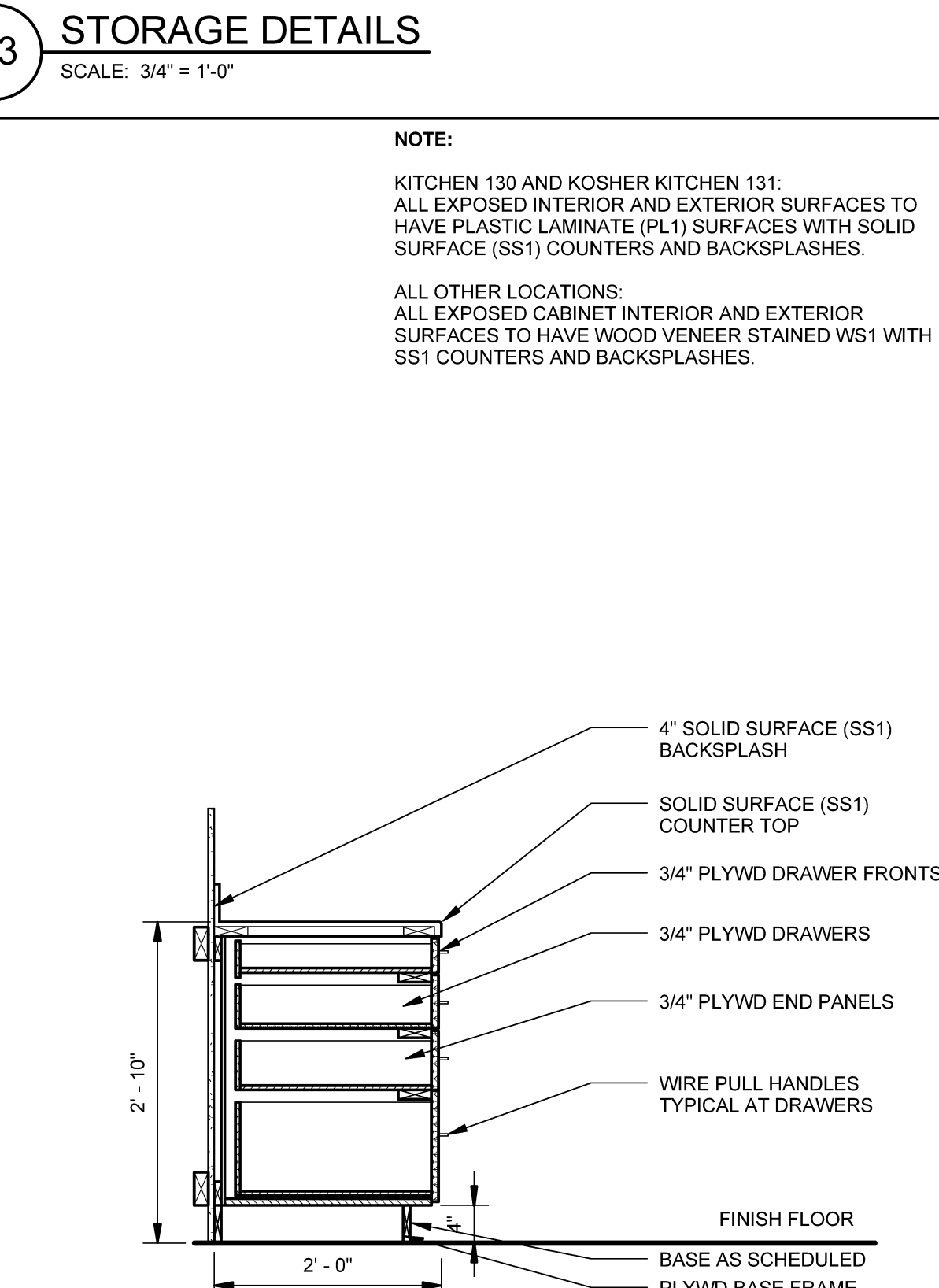
B5 STORAGE SECTION



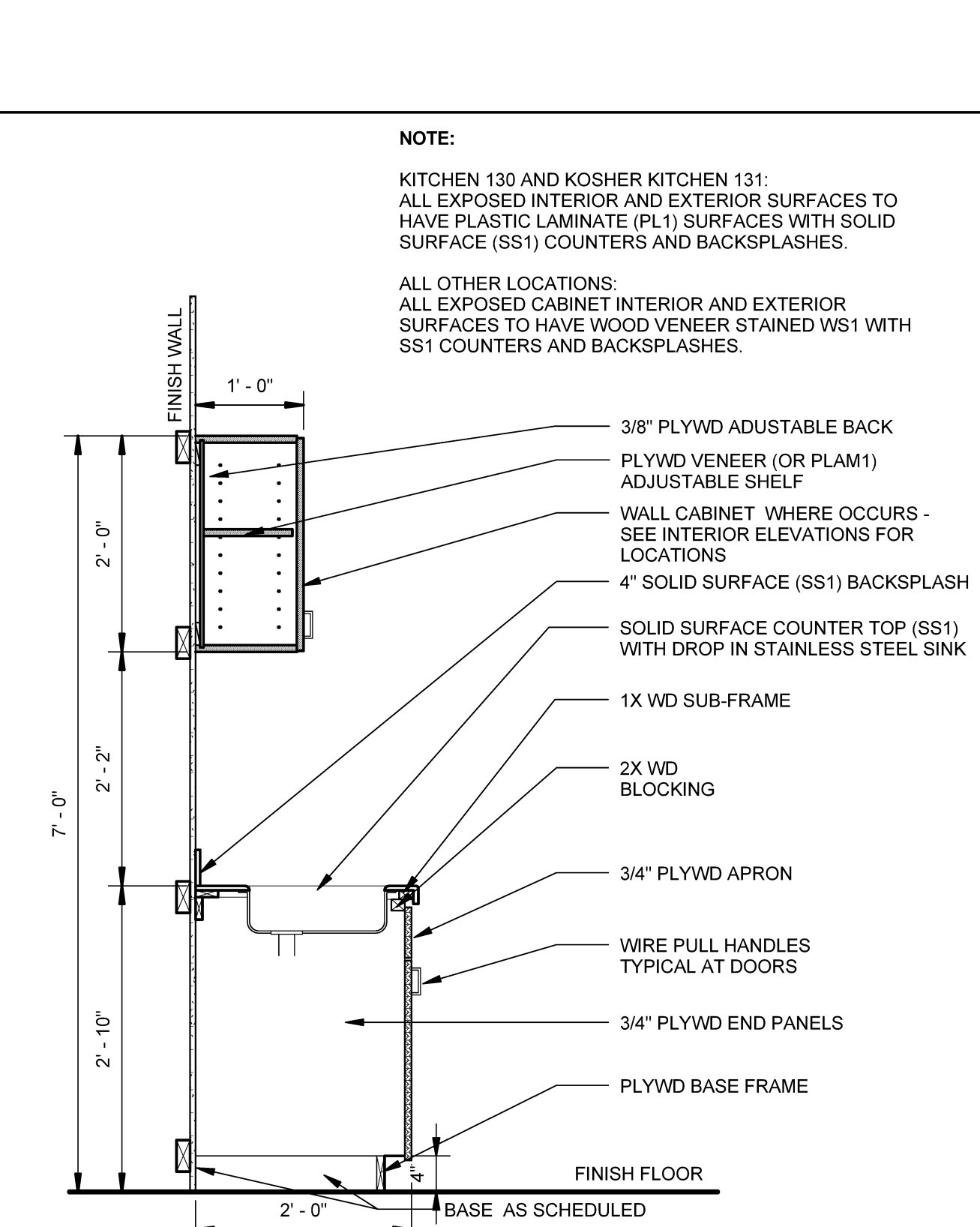
A1 SOLID SURFACE COUNTER SECTION



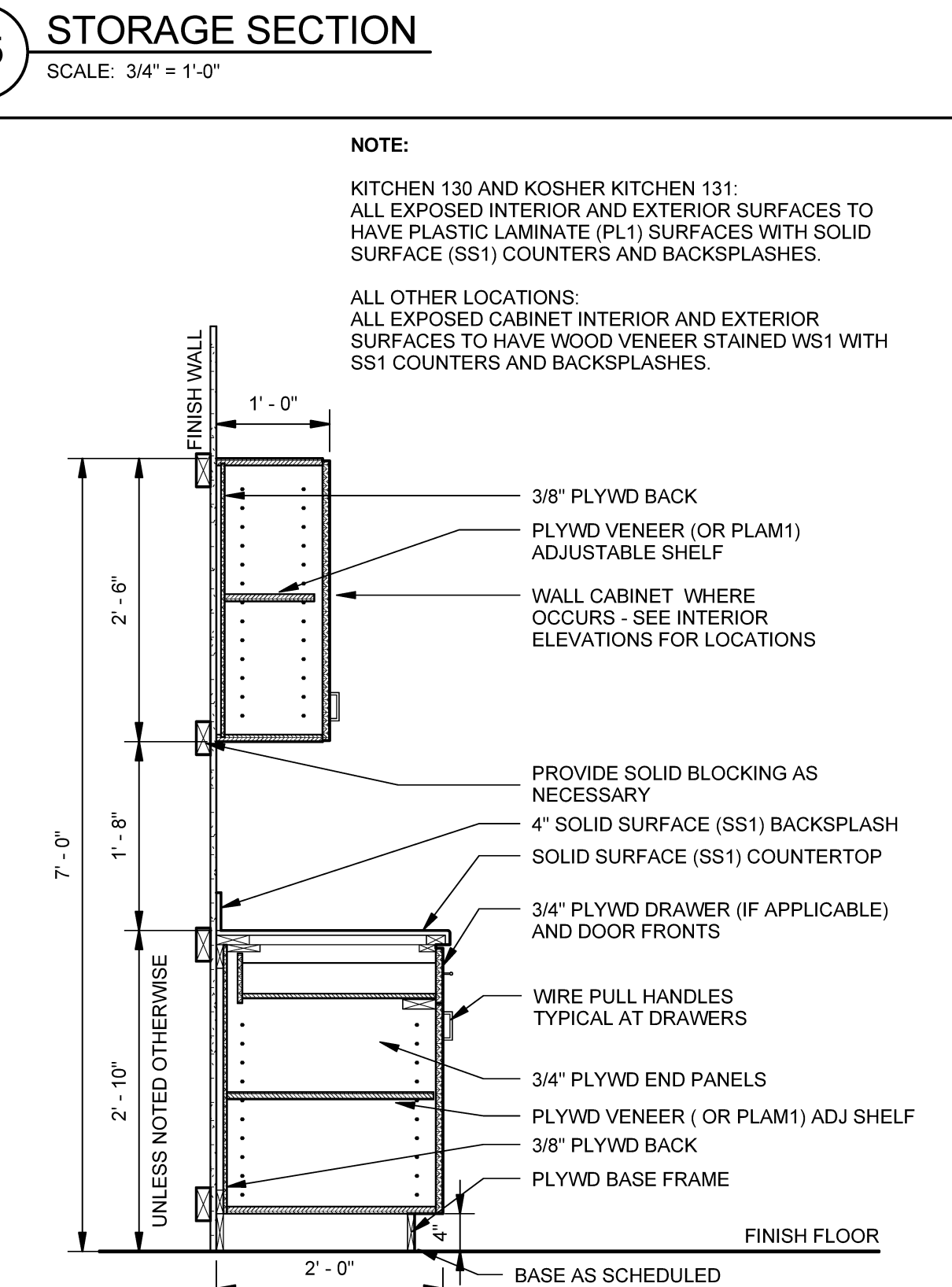
A2 ACCESSIBLE SINK BASE DETAIL



A3 DRAWER STORAGE DETAIL

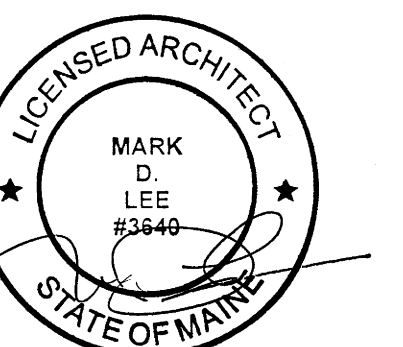


A4 BASE/WALL CABINET W/SINK DETAIL



A5 BASE/WALL CABINET DETAIL

Issues and Revisions		
Mark	Date	Description
-	03-25-16	CONSTRUCTION DOCUMENTS
1	07-22-16	CONFORMANCE SET



Drawing Scales	
As indicated	

PA/PE: MDL © 2016 Harriman Associates
Drawn By: KSA

MILLWORK DETAILS

A83.1

Plot Date: 7/22/2016 2:09:00 PM