

MODULARARTS, INC.
944 NW LEARY WAY
SEATTLE, WA 98107
PHONE 206-788-4210
WWW.MODULARARTS.COM

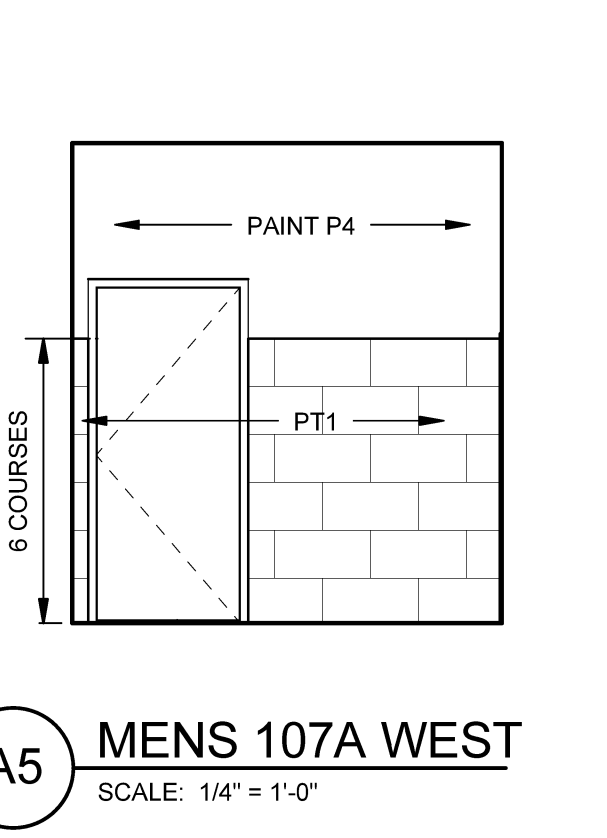
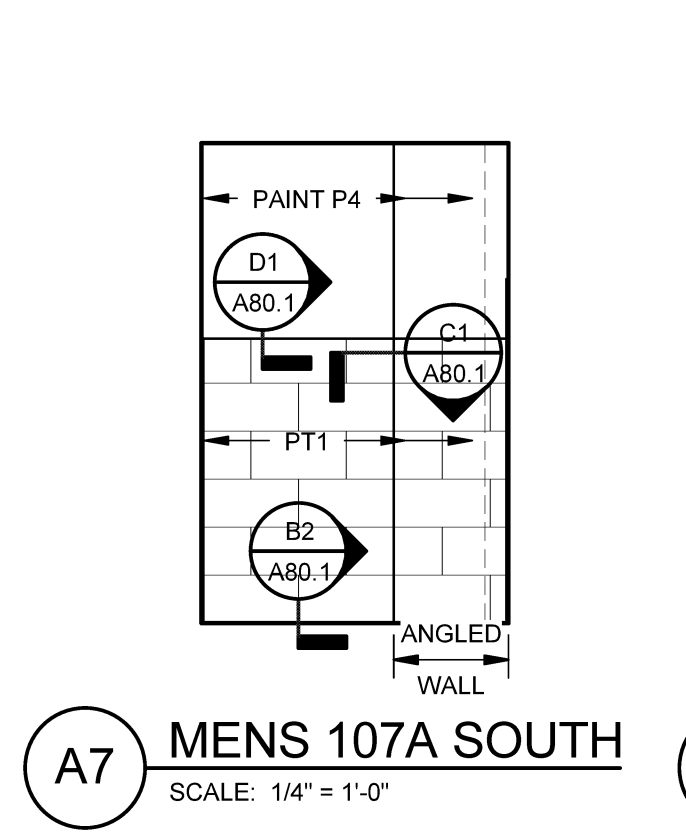
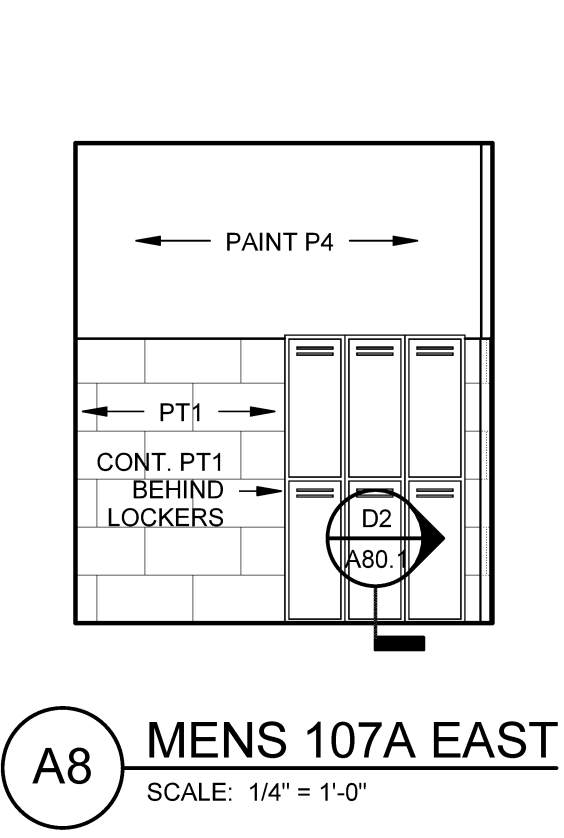
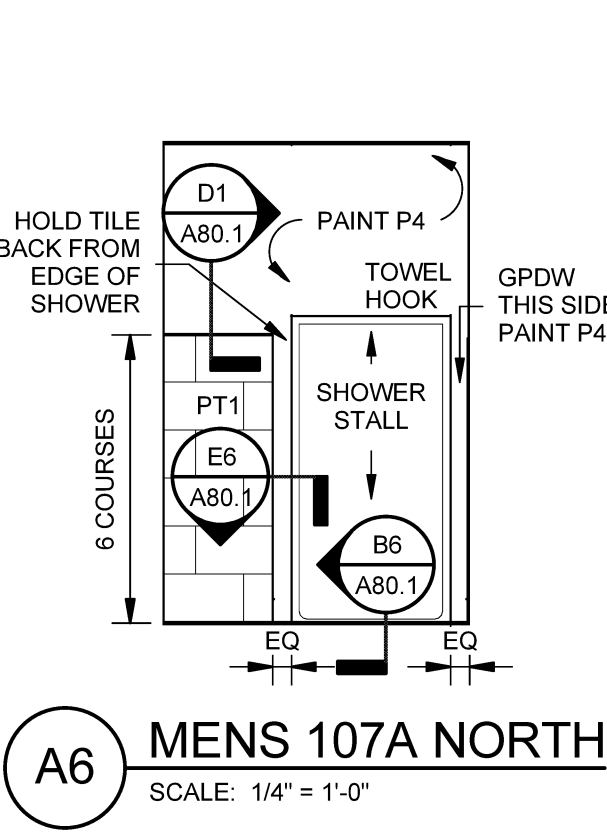
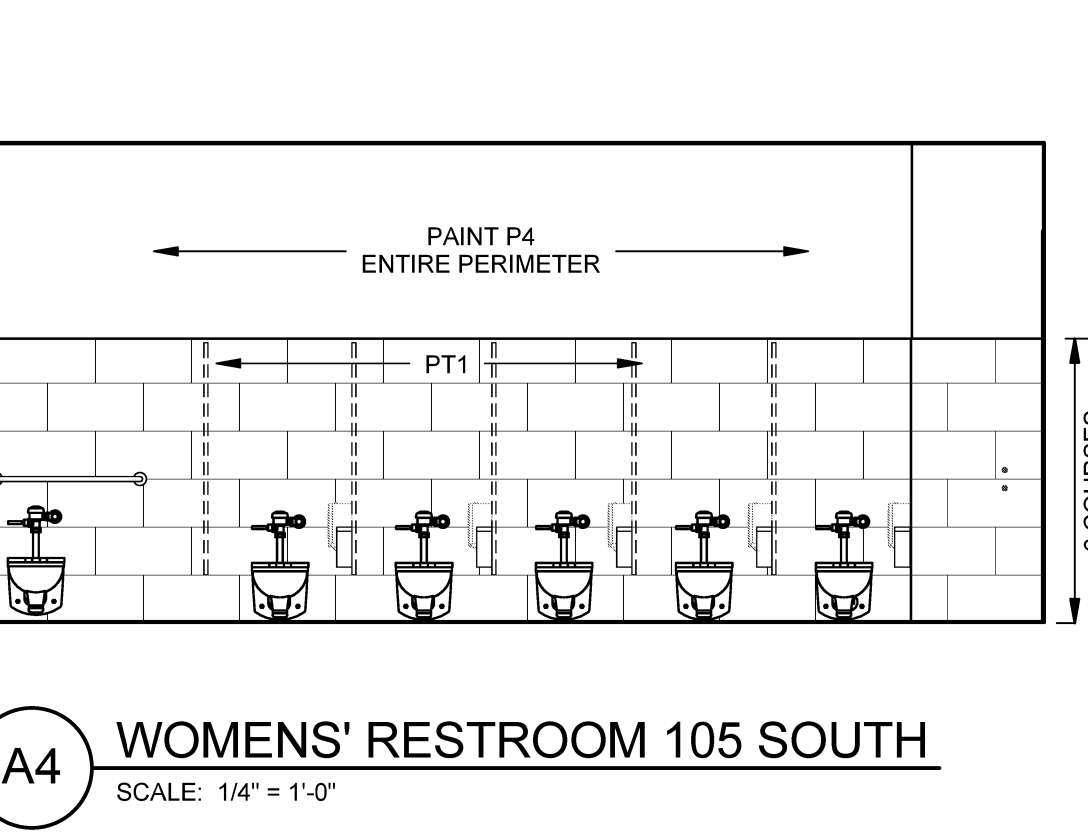
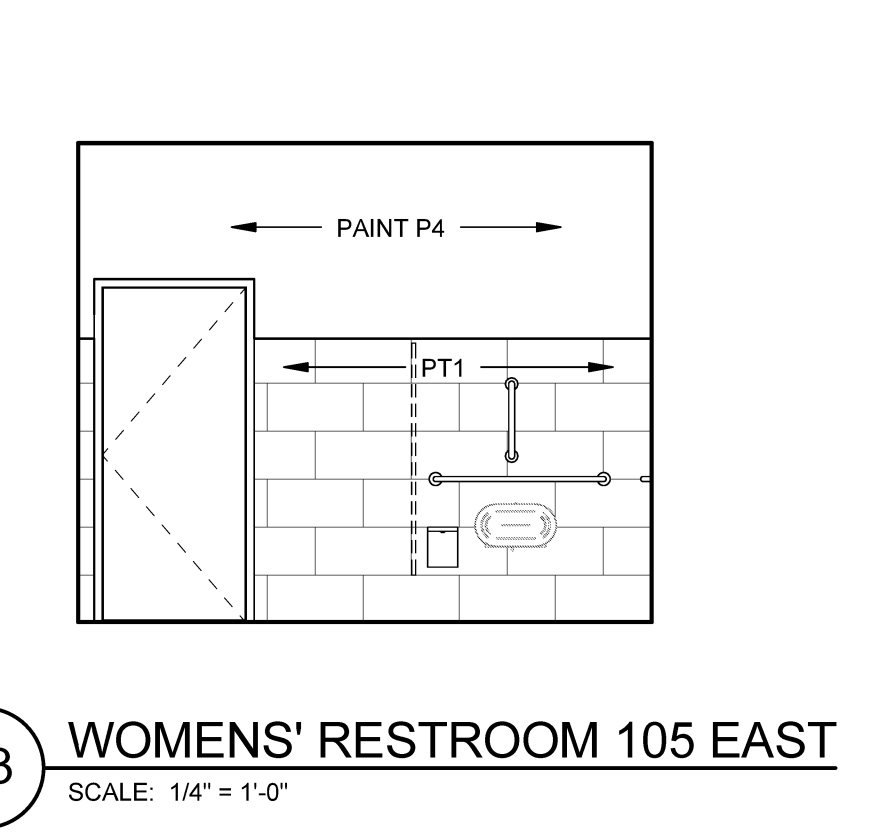
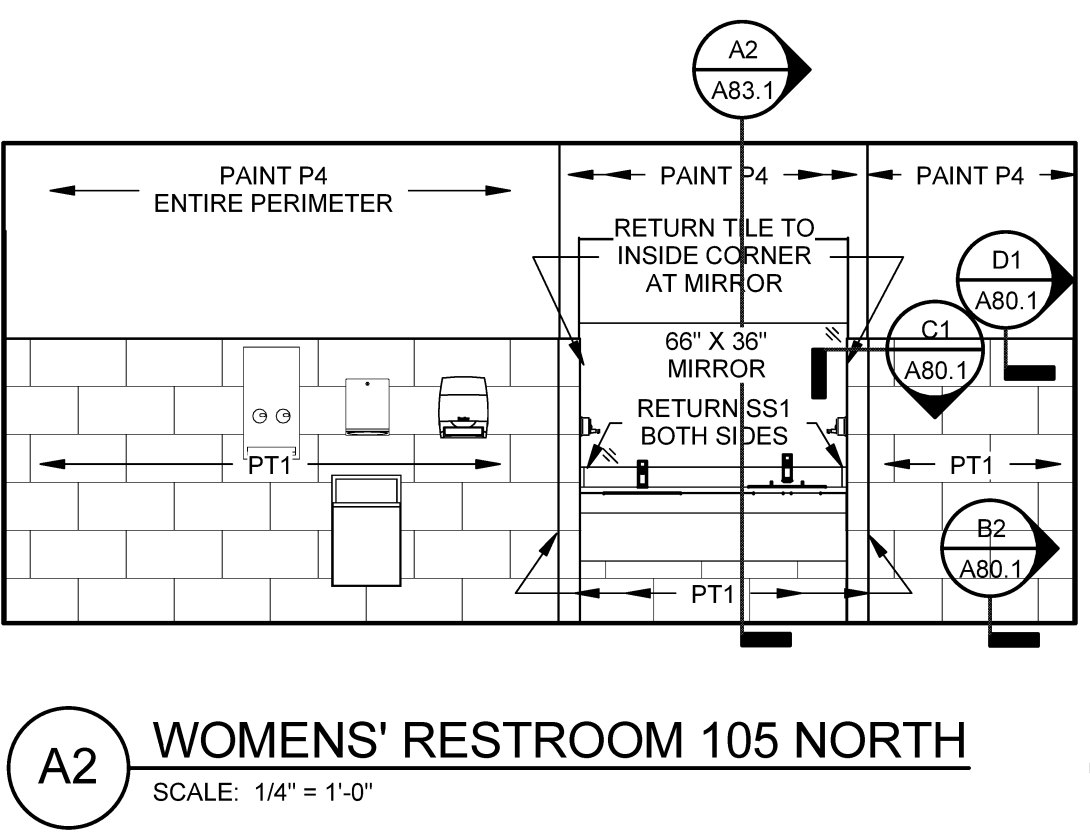
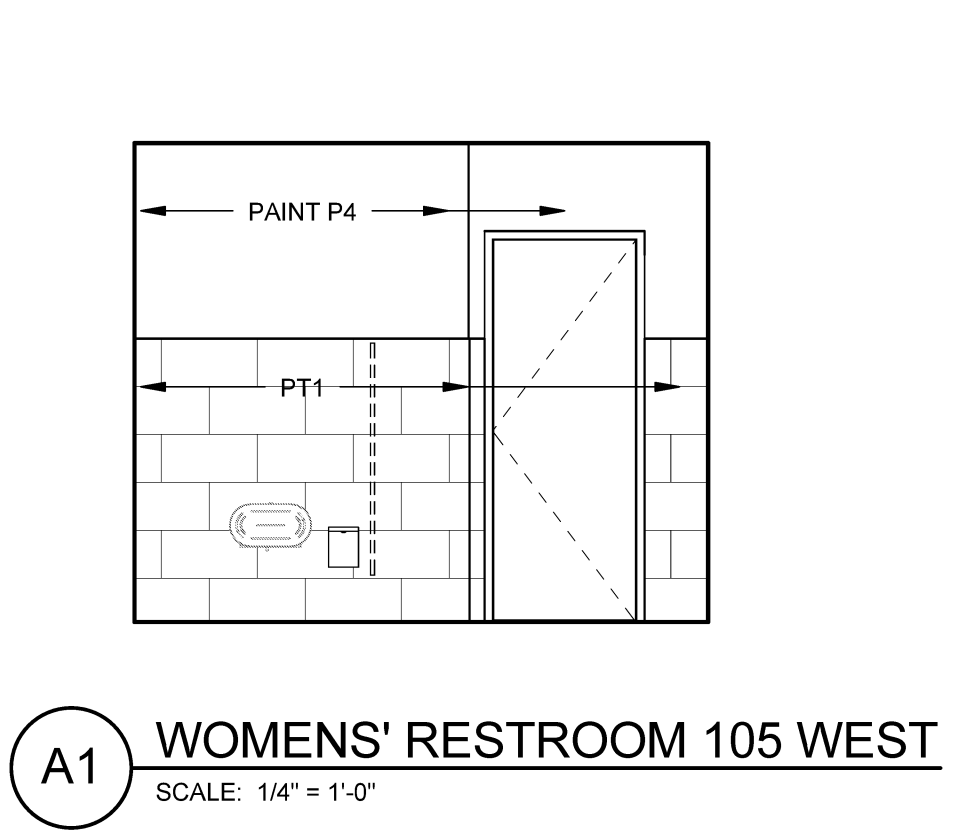
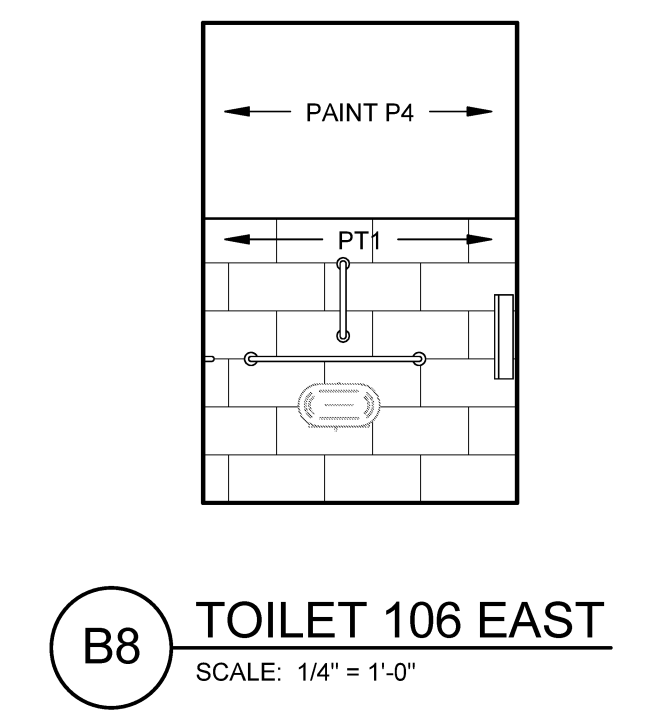
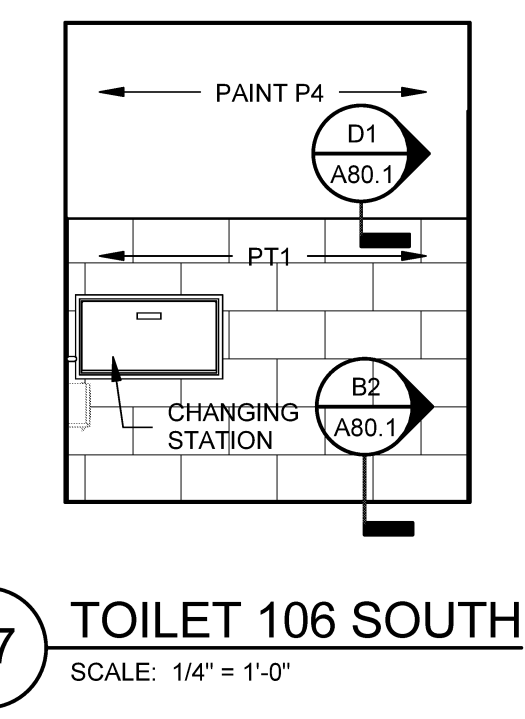
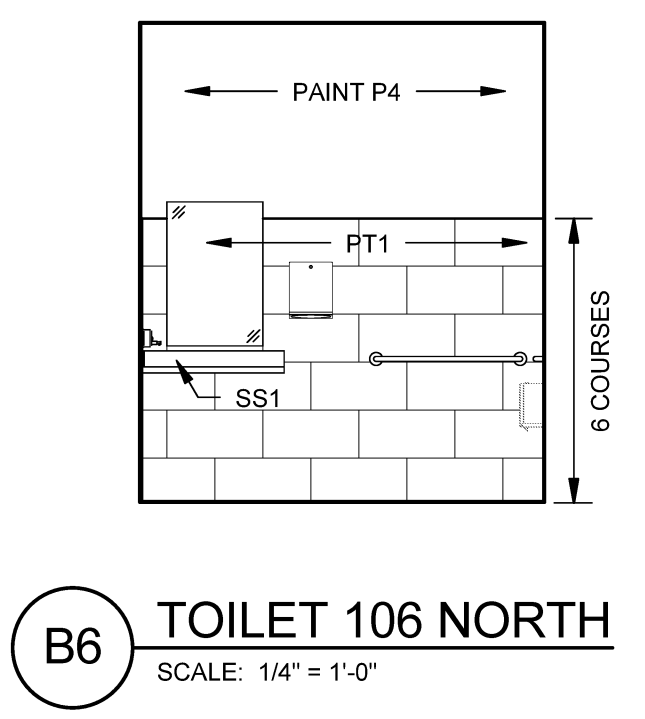
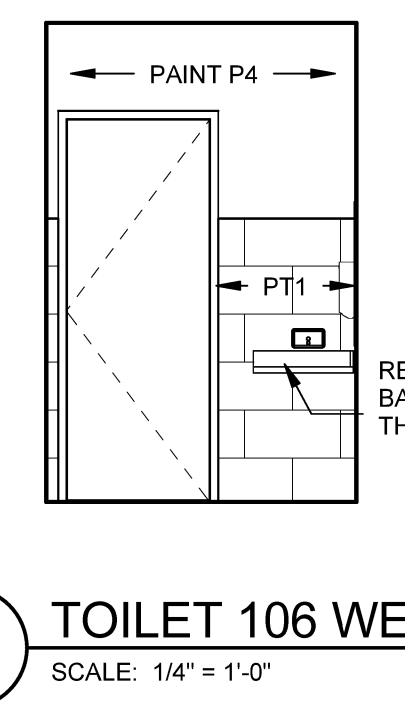
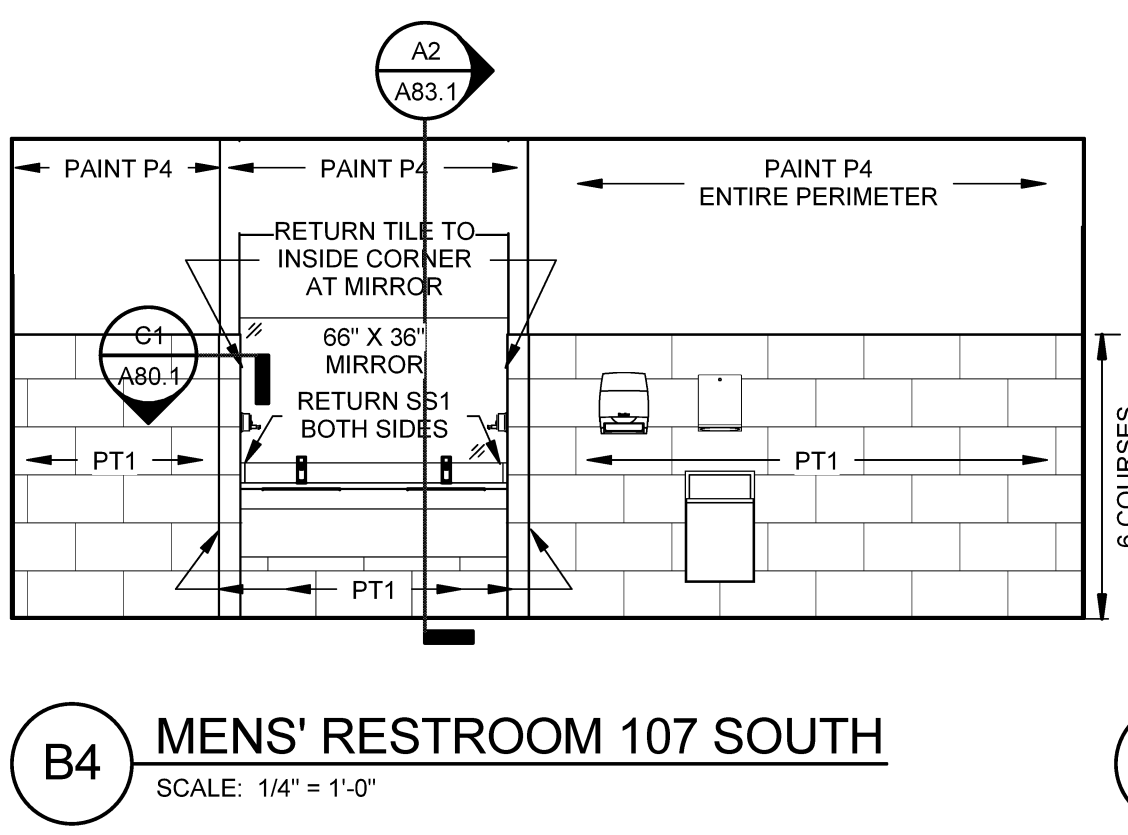
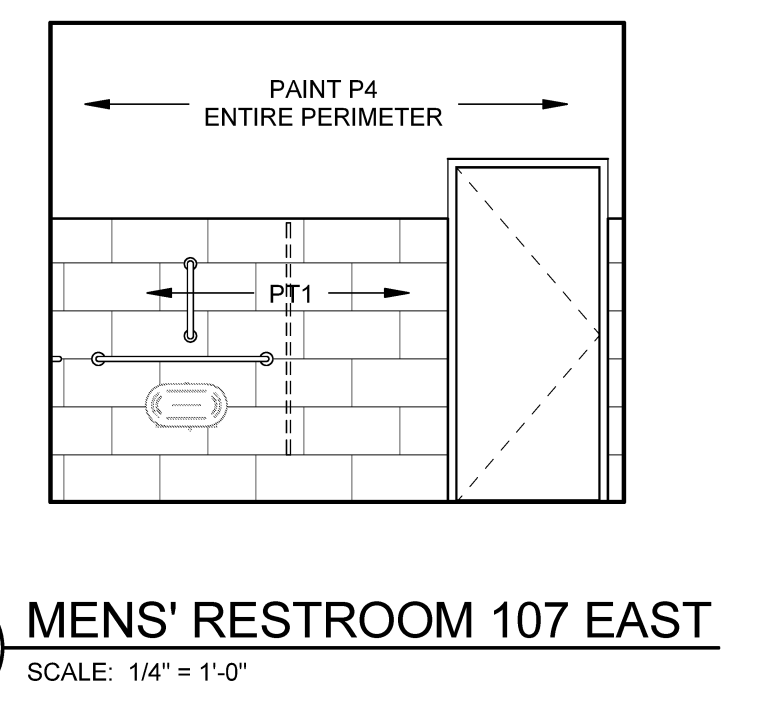
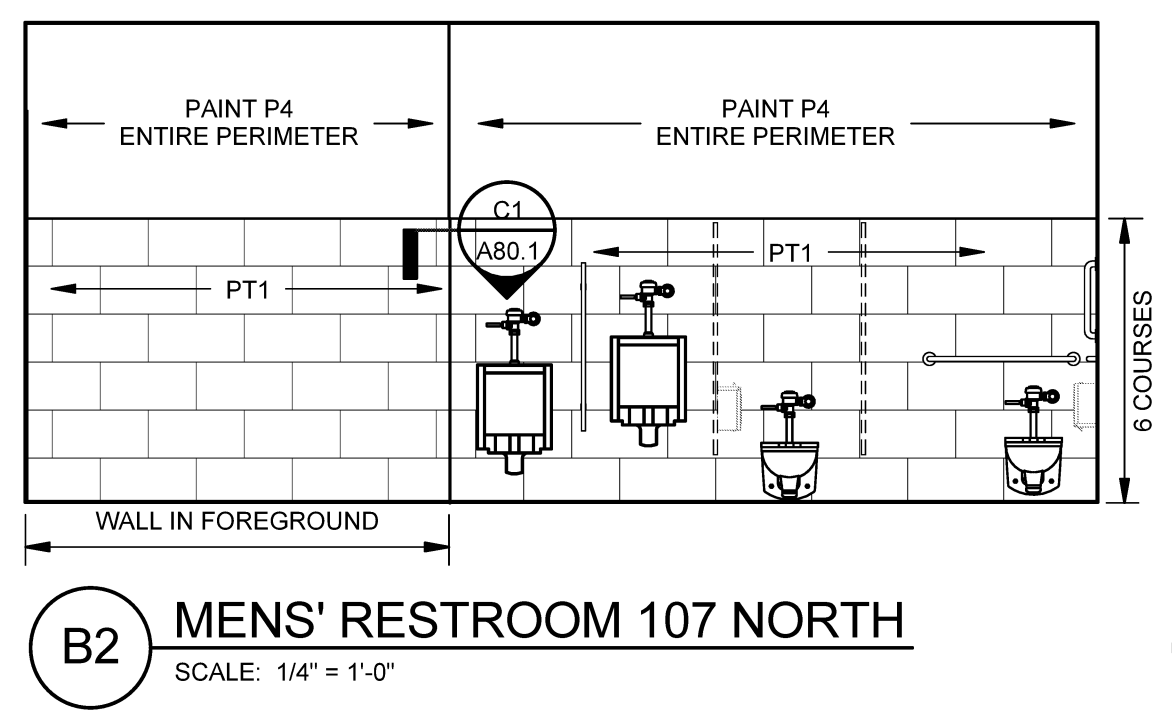
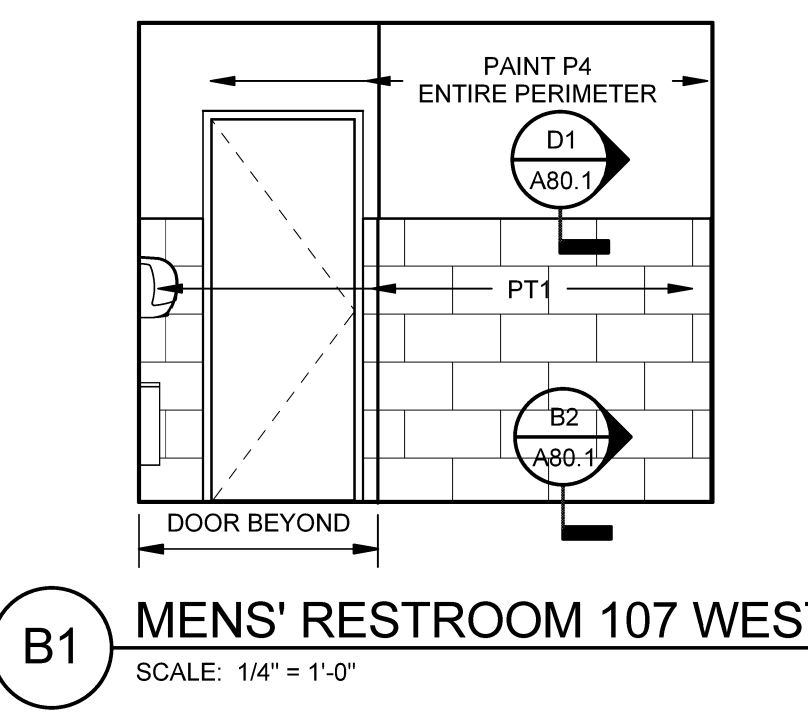
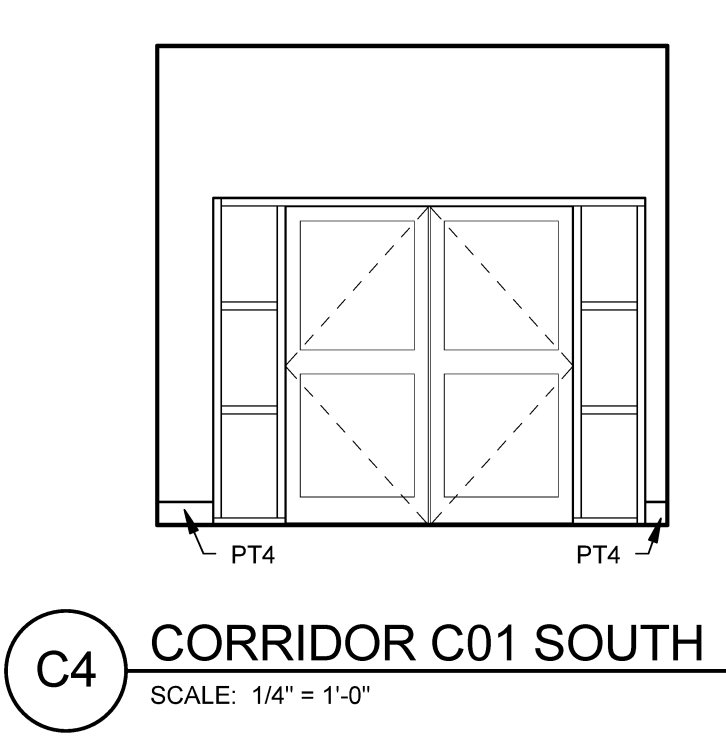
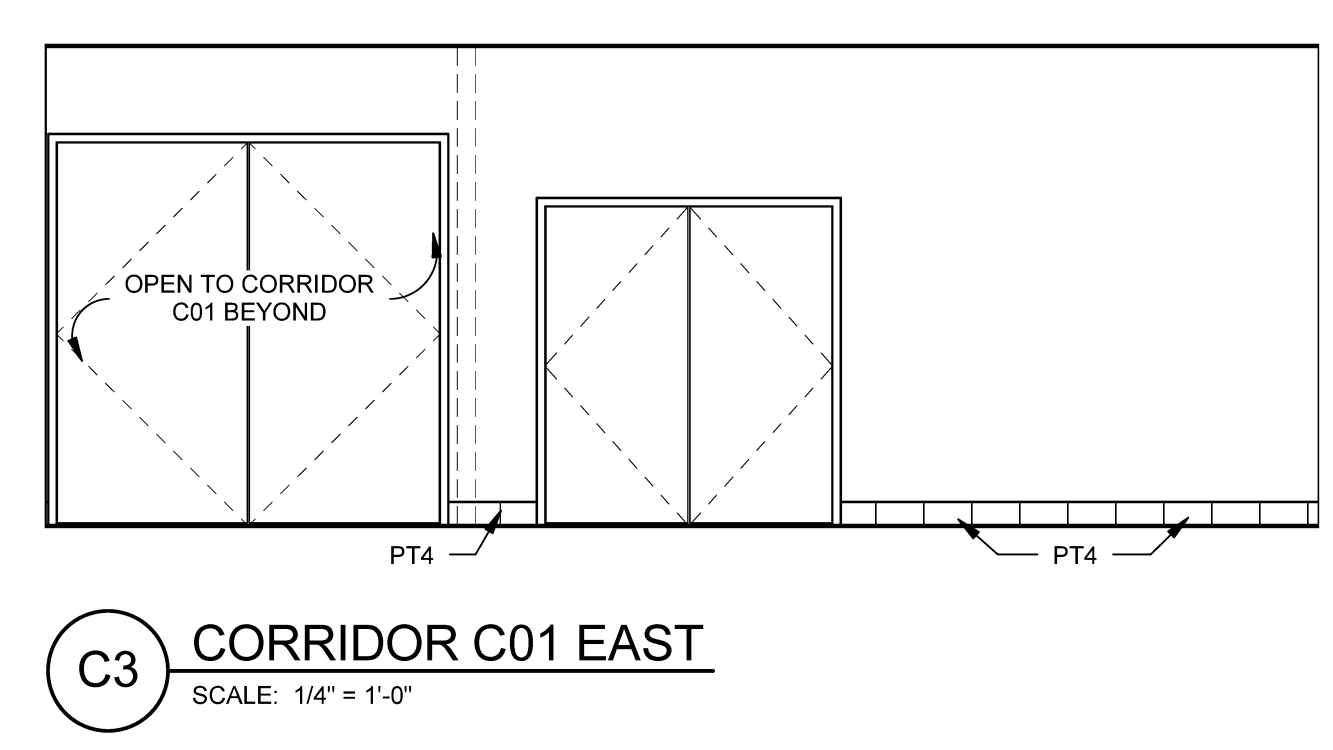
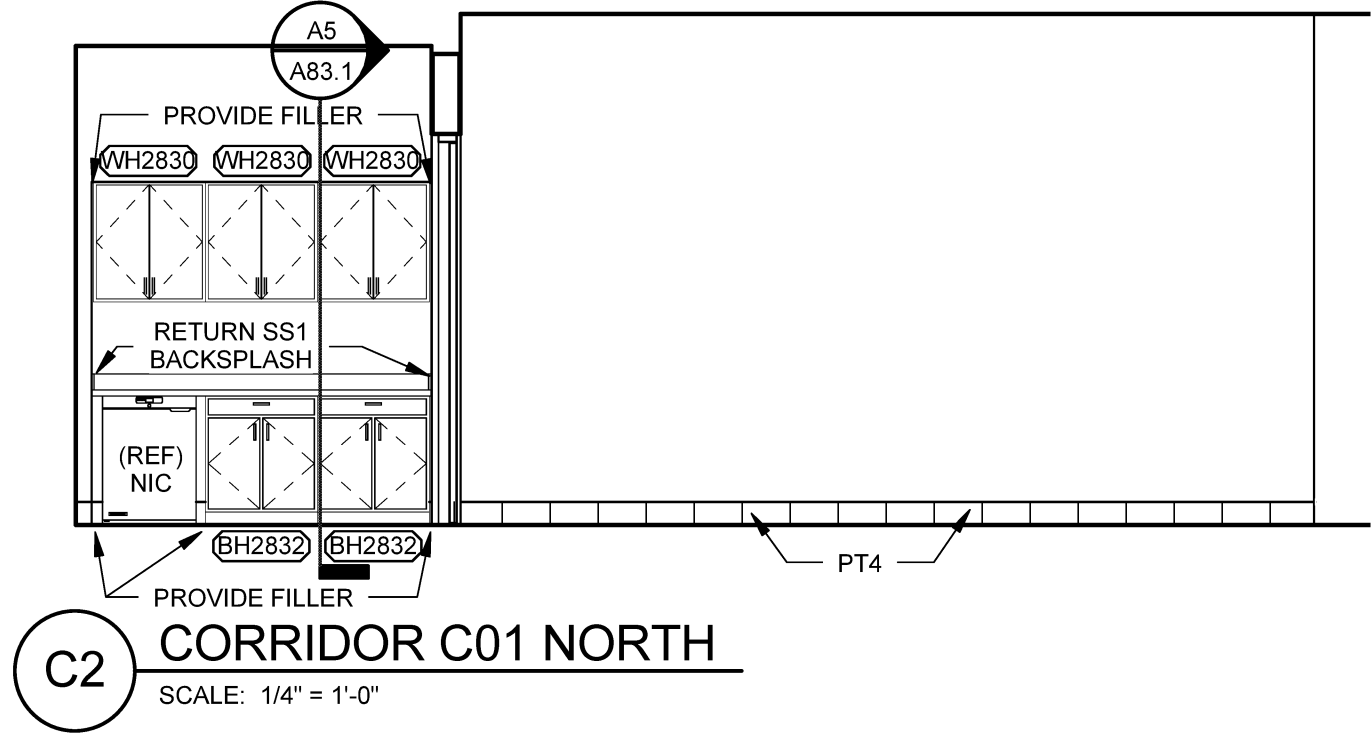
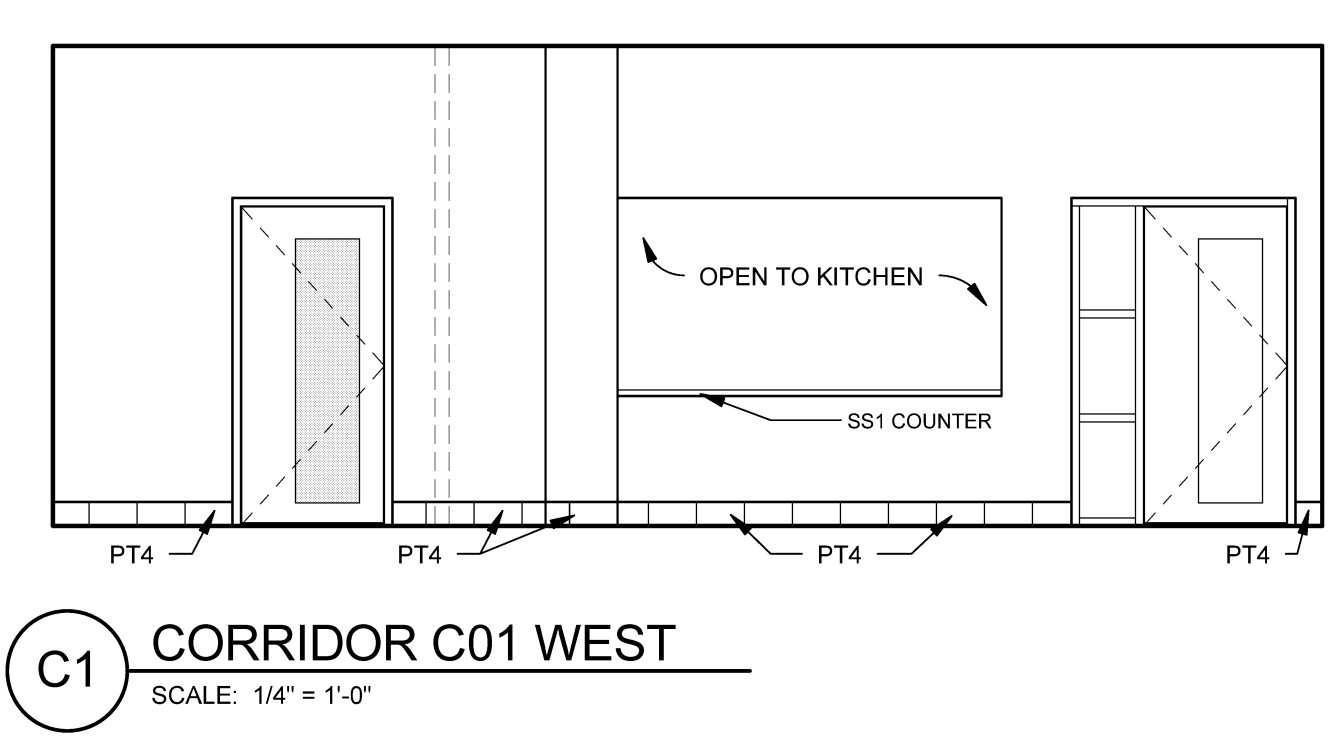
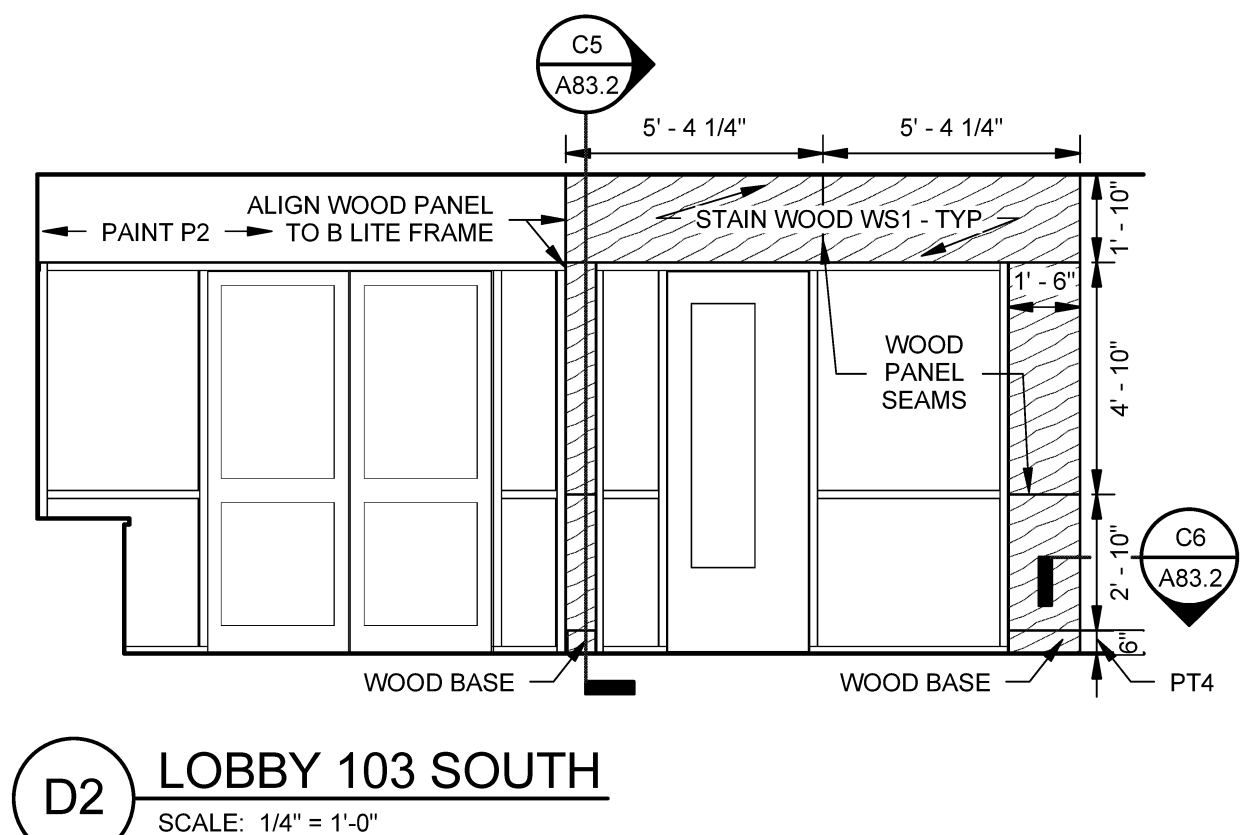
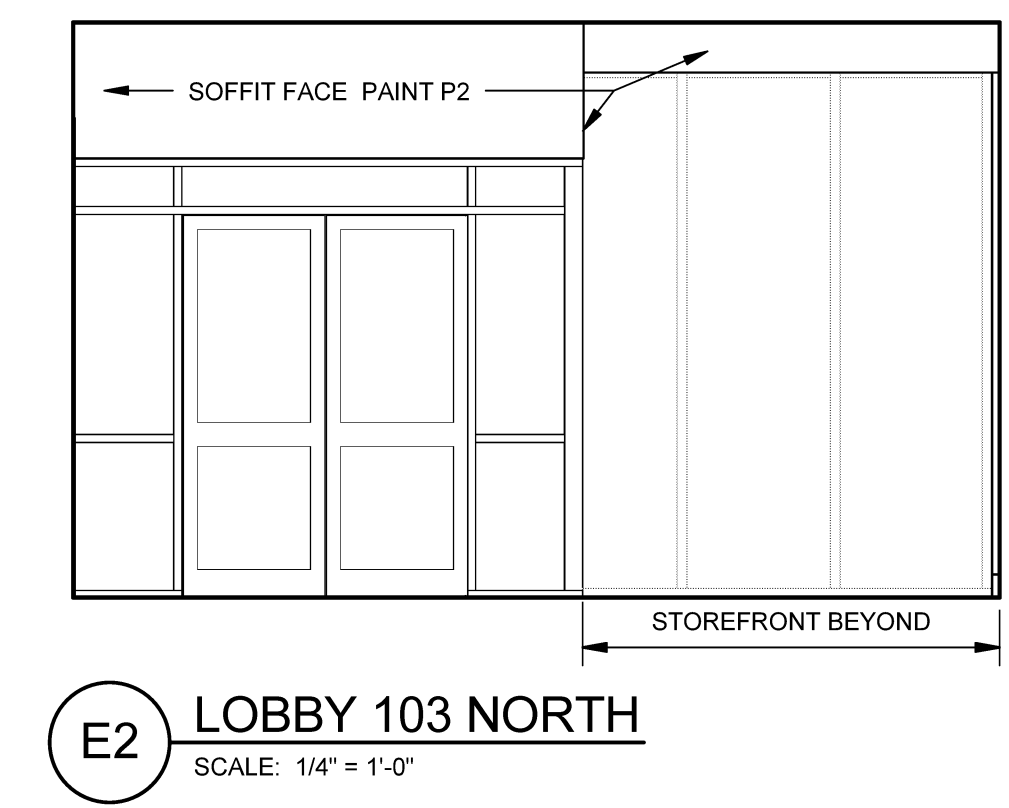
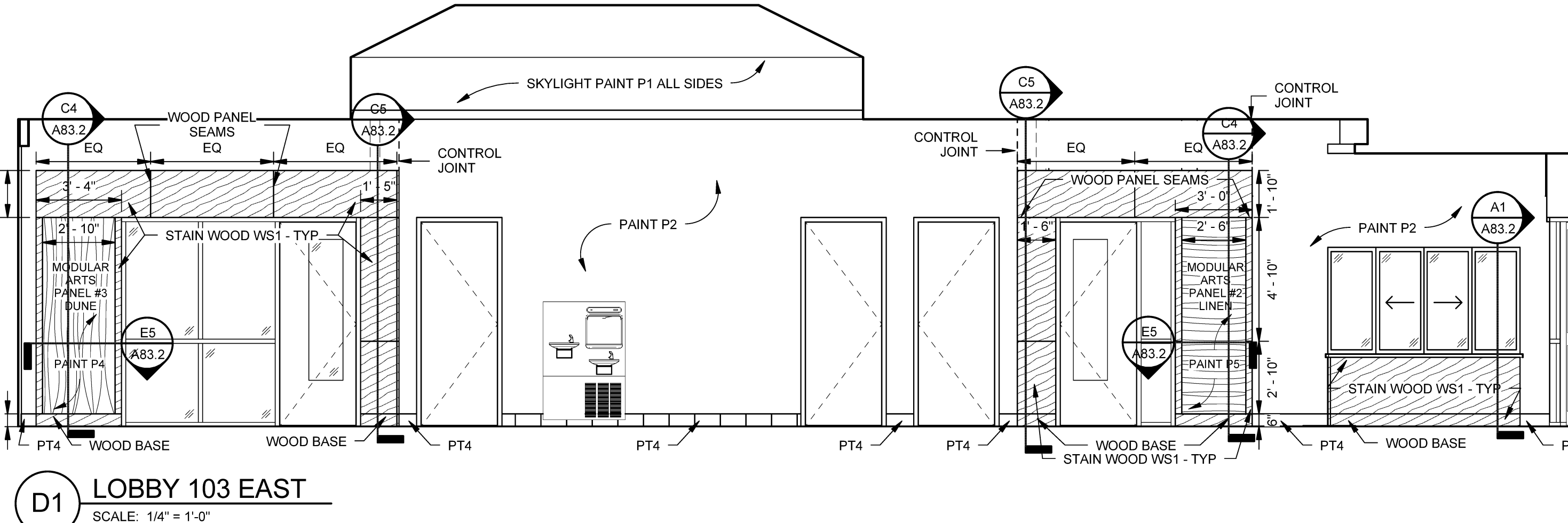
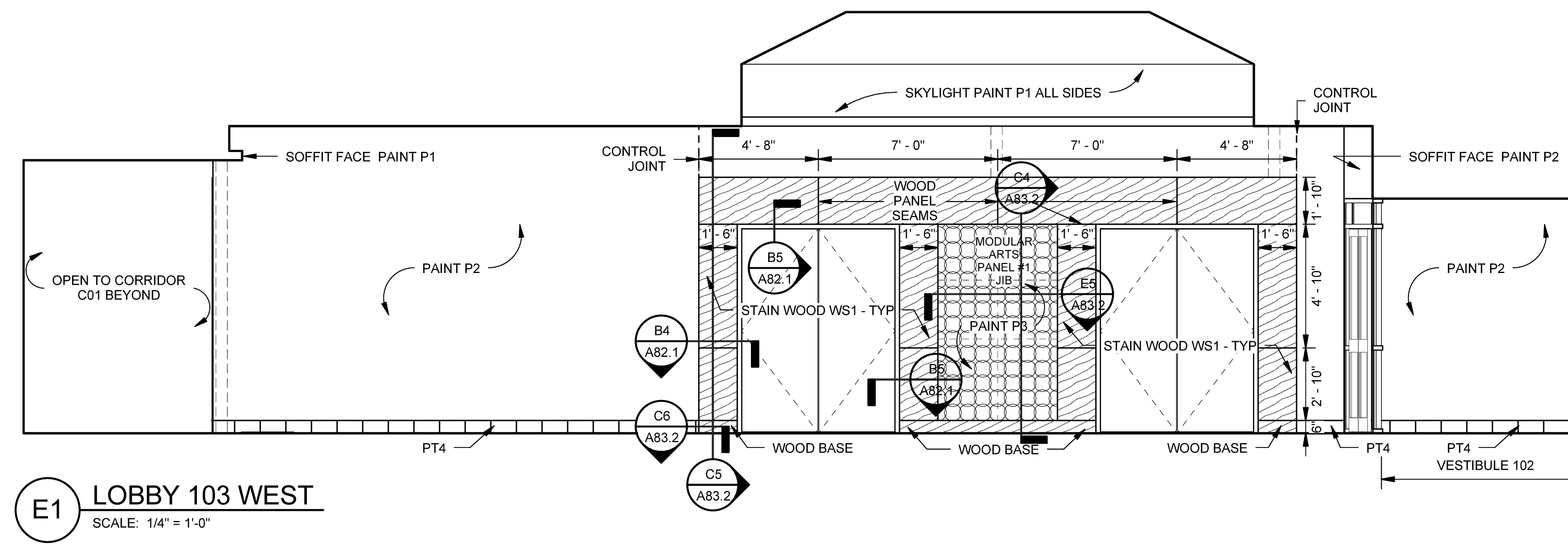
MODULARARTS 32" x 32" PANELS:
PANEL #1 - JIB
PANEL #2 - LINEN (HORIZONTAL PATTERN)
PANEL #3 - VEIL (VERTICAL PATTERN)

PROVIDE SHOP DRAWINGS:
SHOW STANDARD AND PROJECT SPECIFIC DETAILS INCLUDING TERMINATION AT ADJACENT SURFACES.

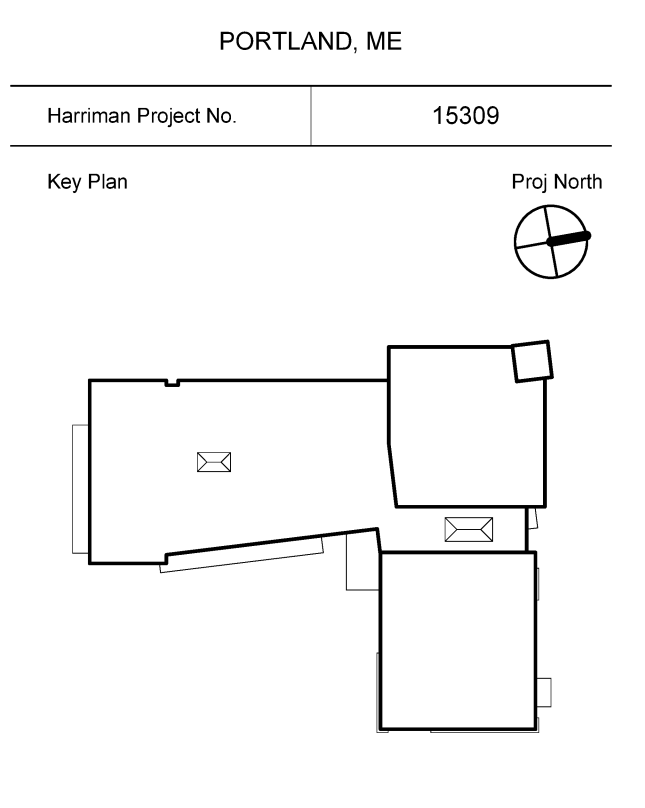
PROVIDE SAMPLES: SAMPLES TO BE A MINIMUM OF 15" x 15" OF SPECIFIED DESIGNS.

INSTALLATION - INSTALL PER MANUFACTURERS WRITTEN INSTRUCTIONS.

GENERAL INSTALLATION NOTES -
- PANELS ARE SCREW MOUNTED THROUGH FACE TO SUBSTRATE.
- ALL PANEL TO PANEL EDGES ARE GLUED WITH APPROVED ADHESIVE.
- SEAMS ARE FILLED WITH APPROVED SPACKLING COMPOUND.
- SEAMS ARE SANDED.
- SURFACE IS SEALED WITH APPROVED PRIMER/ SEALER.
- DESIRED FINISH PAINT IS APPLIED. FLAT PAINT RECOMMENDED BY SPRAY APPLICATION.



JEWISH COMMUNITY ALLIANCE OF SOUTHERN MAINE



Mark	Date	Description
-	09-04-15	DESIGN DEVELOPMENT REVIEW
-	03-25-16	CONSTRUCTION DOCUMENTS
1	04-15-16	ADDENDUM #1
2	04-21-16	ADDENDUM #2
3	04-27-16	ADDENDUM #3
4	07-22-16	CONFORMANCE SET

PA / PE	MDL	© 2016
Drawn By	JAE	Harriman Associates

INTERIOR ELEVATIONS

A81.1

Plot Date: 7/22/2016 12:43:31 PM