



HARRIMAN

AUBURN PORTLAND MANCHESTER

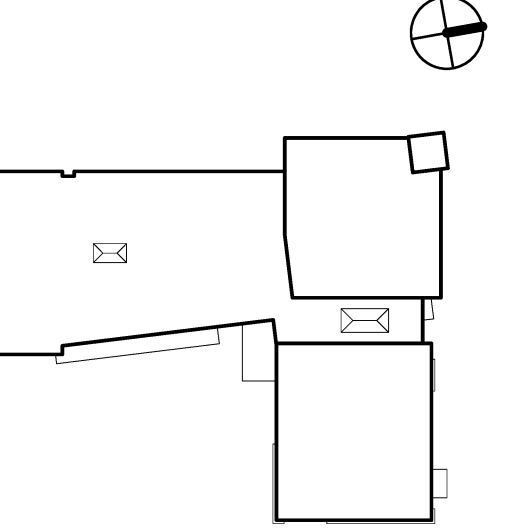
JEWISH COMMUNITY ALLIANCE OF SOUTHERN MAINE

PORTLAND, ME

Harriman Project No. 15309

Key Plan

Proj North

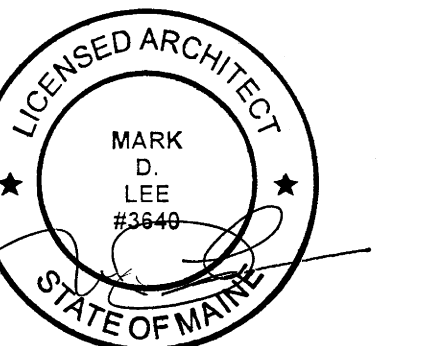


GENERAL NOTES

- ALL HOLLOW METAL DOORS AND FRAMES TO BE PAINTED P7.
- WOOD DOORS AND WOOD WAINSCOTING TO BE STAINED WS1.
- RESILIENT WALL BASE (RWB1) TO BE USED IN ALL AREAS UNLESS OTHERWISE NOTED. 6" HEIGHT AT ALL WALLS. 4" HEIGHT AT ALL BASE CABINETS. SCRIBE RWB1 TO COVE BASE WHERE TWO MATERIALS MEET.
- ANY EXPOSED DUCT WORK AND STRUCTURE THAT RECEIVES PAINT TO BE PAINTED P1 UNLESS OTHERWISE NOTED.
- ALL GPDW SOFFITS TO BE PAINTED P1 UNLESS OTHERWISE NOTED.
- PROVIDE TRANSITION STRIPS AT DISSIMILAR FLOOR MATERIALS. LOCATE TRANSITIONS AT CENTERLINE OF DOOR IN CLOSED POSITION UNLESS OTHERWISE NOTED.

Issues and Revisions

Mark	Date	Description
-	03-25-16	CONSTRUCTION DOCUMENTS
1	07-22-16	CONFORMANCE SET



Drawing Scales

1/8" = 1'-0"

PA/PE: MDL

Drawn By: KSA

© 2016

Harriman Associates

MATERIALS PLAN

A71.2

