



HARRIMAN

AUBURN PORTLAND MANCHESTER

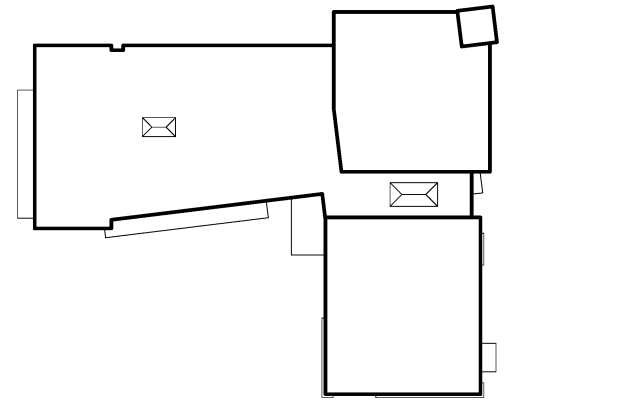
JEWISH COMMUNITY ALLIANCE OF SOUTHERN MAINE

PORTLAND, ME

Harriman Project No. 15309

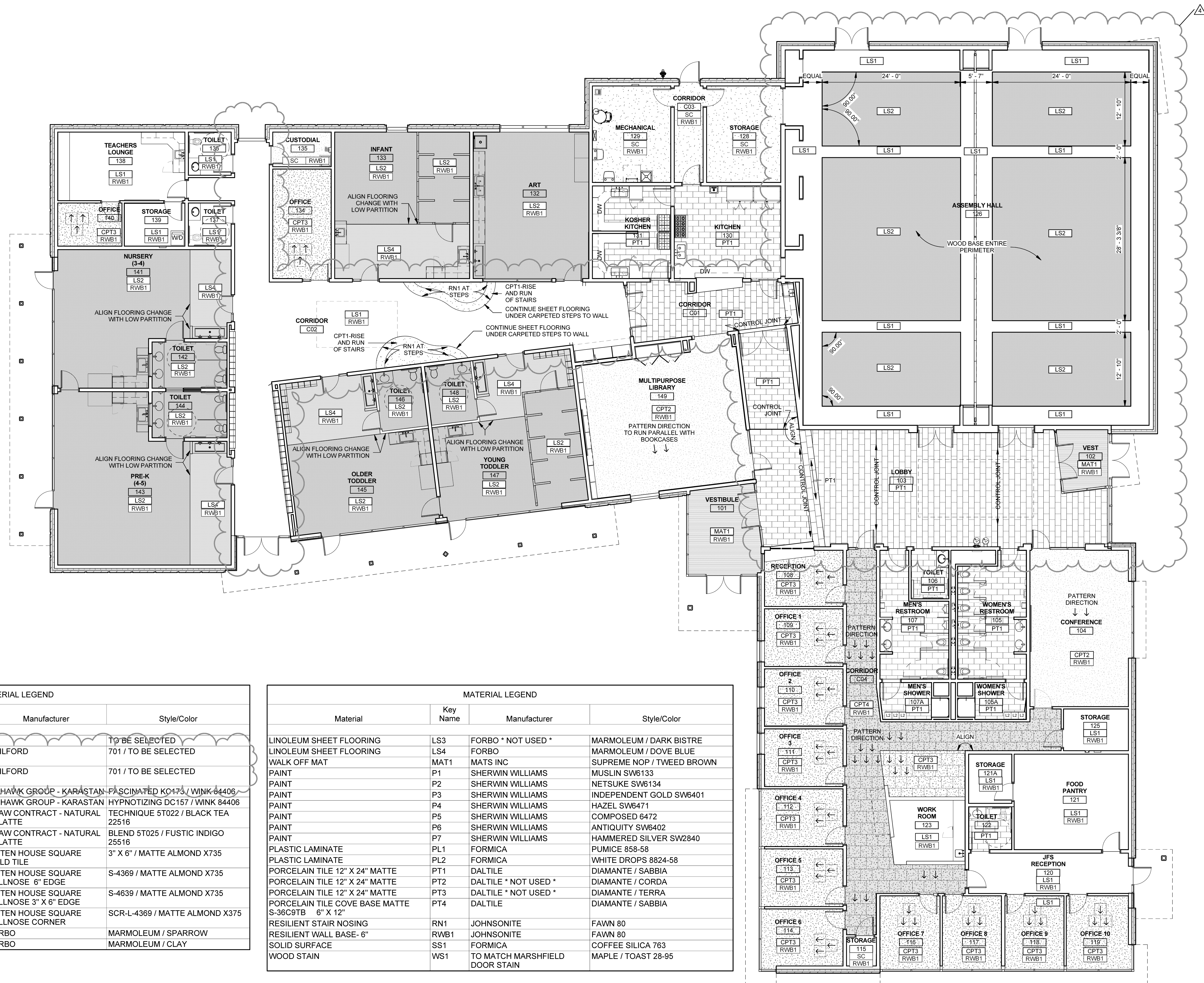
Key Plan

Proj North



GENERAL NOTES

- 1. ALL HOLLOW METAL DOORS AND FRAMES TO BE PAINTED P7.
2. WOOD DOORS AND WOOD WAINSCOTING TO BE STAINED WS1.
3. RESILIENT WALL BASE (RWB1) TO BE USED IN ALL AREAS UNLESS OTHERWISE NOTED.
4. ANY EXPOSED DUCT WORK AND STRUCTURE THAT RECEIVES PAINT TO BE PAINTED P1 UNLESS OTHERWISE NOTED.
5. ALL GPDW SOFFITS TO BE PAINTED P1 UNLESS OTHERWISE NOTED.
6. PROVIDE TRANSITION STRIPS AT DISSIMILAR FLOOR MATERIALS. LOCATE TRANSITIONS AT CENTERLINE OF DOOR IN CLOSED POSITION UNLESS OTHERWISE NOTED.



MATERIAL LEGEND

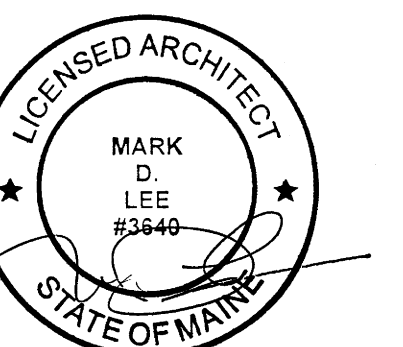
Table with 4 columns: Material, Key Name, Manufacturer, Style/Color. Lists materials like acoustic wall panels, carpet, ceramic tile, and linoleum sheet flooring.

MATERIAL LEGEND

Table with 4 columns: Material, Key Name, Manufacturer, Style/Color. Lists materials like linoleum sheet flooring, walk off mat, paint, plastic laminate, porcelain tile, resilient stair nosing, and wood stain.

Issues and Revisions

Table with 3 columns: Mark, Date, Description. Lists revisions from 07-24-15 to 07-22-16.



Drawing Scale: 1/8" = 1'-0"

PA/PE: MDL © 2016 Harriman Associates
Drawn By: KSA

MATERIALS PLAN

A71.1