

DOOR AND FRAME SCHEDULE

No.	DOOR PANELS					FRAME					FIRE RATING	REMARKS	
	PANEL SIZE					TYPE	MAT	TYPE	DETAILS				
	PANELS	WIDTH	HEIGHT	THICK	TYPE				MAT / FIN	HEAD			JAMB
GROUND FLOOR													
101A	(2)	3'-0"	8'-0"	1 3/4"	SF2	HD AL	A1/A55.1	HD AL	A1/A55.1	A1/A55.1	-	-	
101B	(2)	3'-0"	8'-0"	1 3/4"	SF2	HD AL	5	HD AL	B5/A80.2	A1/A10.1	-	-	
102A	(2)	3'-0"	8'-0"	1 3/4"	SF2	HD AL	A1/A55.1	HD AL	A1/A55.1	A1/A55.1	-	-	
102B	(2)	3'-0"	8'-0"	1 3/4"	SF2	HD AL	5	HD AL	B5/A80.2	A1/A10.1	-	-	
104A	(1)	3'-0"	8'-0"	1 3/4"	R	WD	4	AL	D5/A82.2	SIM A6/A82.1	-	-	
104B	(1)	3'-0"	7'-0"	1 3/4"	F	WD	1	HM	B6/A80.2	A6/A80.2	-	-	
105	(1)	3'-0"	8'-0"	1 3/4"	F	WD	1	HM	B6/A80.2	A6/A80.2	-	-	
105A	(1)	3'-0"	7'-0"	1 3/4"	F	WD	1	HM	B6/A80.2	A6/A80.2	-	-	
106	(1)	3'-0"	8'-0"	1 3/4"	F	WD	1	HM	B6/A80.2	A6/A80.2	-	-	
107	(1)	3'-0"	8'-0"	1 3/4"	F	WD	1	HM	B6/A80.2	A6/A80.2	-	-	
107A	(1)	3'-0"	7'-0"	1 3/4"	F	WD	1	HM	B6/A80.2	A6/A80.2	-	-	
108	(1)	3'-0"	7'-0"	1 3/4"	N	WD	1	HM	B6/A80.2	A6/A80.2	-	-	
109	(1)	3'-0"	7'-0"	1 3/4"	N	WD	1	HM	B6/A80.2	A6/A80.2	-	-	
110	(1)	3'-0"	7'-0"	1 3/4"	N	WD	1	HM	B6/A80.2	A6/A80.2	-	-	
111	(1)	3'-0"	7'-0"	1 3/4"	N	WD	1	HM	B6/A80.2	A6/A80.2	-	-	
112	(1)	3'-0"	7'-0"	1 3/4"	N	WD	1	HM	B6/A80.2	A6/A80.2	-	-	
113	(1)	3'-0"	7'-0"	1 3/4"	N	WD	1	HM	B6/A80.2	A6/A80.2	-	-	
114	(1)	3'-0"	7'-0"	1 3/4"	N	WD	1	HM	B6/A80.2	A6/A80.2	-	-	
115	(1)	3'-0"	7'-0"	1 3/4"	F	WD	1	HM	B6/A80.2	A6/A80.2	-	-	
116	(1)	3'-0"	7'-0"	1 3/4"	N	WD	1	HM	B6/A80.2	A6/A80.2	-	-	
117	(1)	3'-0"	7'-0"	1 3/4"	N	WD	1	HM	B6/A80.2	A6/A80.2	-	-	
118	(1)	3'-0"	7'-0"	1 3/4"	N	WD	1	HM	B6/A80.2	A6/A80.2	-	-	
119	(1)	3'-0"	7'-0"	1 3/4"	N	WD	1	HM	B6/A80.2	A6/A80.2	-	-	
120A	(1)	3'-0"	7'-0"	1 3/4"	SF2	HD AL	A1/A55.1	HD AL	A1/A55.1	A1/A55.1	-	-	
120B	(1)	3'-0"	7'-0"	1 3/4"	F	WD	1	HM	B6/A80.2	A6/A80.2	-	-	
121	(1)	3'-0"	7'-0"	1 3/4"	N	WD	1	HM	B6/A80.2	A6/A80.2	-	-	
121A	(1)	3'-0"	7'-0"	1 3/4"	F	WD	1	HM	B6/A80.2	A6/A80.2	-	-	
122	(1)	3'-0"	7'-0"	1 3/4"	F	WD	1	HM	B6/A80.2	A6/A80.2	-	-	
125	(1)	3'-0"	7'-0"	1 3/4"	F	WD	1	HM	B6/A80.2	A6/A80.2	-	-	
126A	(2)	3'-0"	8'-0"	1 3/4"	F	WD	1	AL	D5/A82.2	SIM B4/A82.1	-	-	
126B	(2)	3'-0"	8'-0"	1 3/4"	F	WD	1	AL	D5/A82.2	B4/A82.1	-	-	
126C	(2)	2'-10"	7'-10"	1 3/4"	F	HM - Gym	1	HM - Gym	B3/A80.2	A3/A80.2	-	-	
126D	(2)	2'-10"	7'-10"	1 3/4"	F	HM - Gym	1	HM - Gym	B3/A80.2	A3/A80.2	-	-	
126E	(1)	3'-0"	8'-2"	1 3/4"	F	WD	1	HM	D4/A82.2	C3/A82.1	-	-	
127A	(2)	3'-0"	8'-2"	1 3/4"	F	WD	1	HM	D4/A82.2	C3/A82.1	-	-	
127B	(2)	3'-0"	8'-2"	1 3/4"	F	WD	1	HM	D4/A82.2	C3/A82.1	-	-	
128A	(2)	3'-0"	7'-0"	1 3/4"	F	WD	1	HM	D3/A82.2	SIM C4/A82.2	-	20	
128B	(1)	3'-0"	7'-0"	1 3/4"	F	HM	1	HM	B6/A80.2	A6/A80.2	-	20	
129	(1)	3'-0"	7'-0"	1 3/4"	F	HM	1	HM	B6/A80.2	A6/A80.2	-	-	
130A	(1)	3'-0"	6'-8"	1 3/4"	R	WD	7	HM	B6/A80.2	A6/A80.2	-	-	
130B	(1)	3'-0"	7'-0"	1 3/4"	F	WD	1	HM	D3/A82.2	C4/A82.1	-	-	
130C	(1)	8'-0"	7'-0"	CS	WD	1	HM	B3/A82.2	A4/A11.1	B3/A82.2	-	-	
131A	(1)	3'-0"	6'-8"	1 3/4"	R	WD	1	HM	B6/A80.2	A6/A80.2	-	-	
131B	(1)	3'-0"	6'-8"	1 3/4"	F	WD	1	HM	B6/A80.2	A6/A80.2	-	-	
132	(1)	3'-0"	6'-8"	1 3/4"	R	WD	7	HM	B6/A80.2	A6/A80.2	-	-	
133	(1)	3'-0"	6'-8"	1 3/4"	R	WD	7	HM	B6/A80.2	A6/A80.2	-	-	
133B	(1)	3'-0"	4'-0"	1 3/4"	R2	WD	2	HM	B6/A80.2	A6/A80.2	-	-	
134	(1)	3'-0"	6'-8"	1 3/4"	R	WD	7	HM	B6/A80.2	A6/A80.2	-	-	
135	(1)	3'-0"	6'-8"	1 3/4"	F	WD	1	HM	B6/A80.2	A6/A80.2	-	-	
136	(1)	3'-0"	6'-8"	1 3/4"	F	WD	1	HM	B6/A80.2	A6/A80.2	-	-	
137	(1)	3'-0"	6'-8"	1 3/4"	F	WD	1	HM	B6/A80.2	A6/A80.2	-	-	
138	(1)	3'-0"	6'-8"	1 3/4"	R	WD	1	HM	B6/A80.2	A6/A80.2	-	-	
139	(1)	3'-0"	6'-8"	1 3/4"	F	WD	1	HM	B6/A80.2	A6/A80.2	-	-	
140	(1)	3'-0"	6'-8"	1 3/4"	N	WD	1	HM	B6/A80.2	A6/A80.2	-	-	
141A	(1)	3'-0"	6'-8"	1 3/4"	R	WD	7	HM	B6/A80.2	A6/A80.2	-	-	
141B	(1)	3'-0"	7'-0"	1 3/4"	R	HD AL	A1/A55.1	HD AL	A1/A55.1	A1/A55.1	-	-	
141C	(1)	3'-0"	6'-8"	1 3/4"	R	WD	1	HM	B6/A80.2	A6/A80.2	-	-	
142A	(1)	3'-0"	6'-8"	1 3/4"	R1	WD	1	HM	B6/A80.2	A6/A80.2	-	-	
142B	(1)	3'-0"	6'-8"	1 3/4"	WD	1	HM	B6/A80.2	A6/A80.2	-	-		
143A	(1)	3'-0"	6'-8"	1 3/4"	R	WD	7	HM	B6/A80.2	A6/A80.2	-	-	
143B	(1)	3'-0"	7'-0"	1 3/4"	R	HD AL	A1/A55.1	HD AL	A1/A55.1	A1/A55.1	-	-	
144	(1)	3'-0"	6'-8"	1 3/4"	R1	WD	1	HM	B6/A80.2	A6/A80.2	-	-	
145A	(1)	3'-0"	6'-8"	1 3/4"	R	WD	7	HM	B6/A80.2	A6/A80.2	-	-	
145B	(1)	3'-0"	7'-0"	1 3/4"	R	HD AL	A1/A55.1	HD AL	A1/A55.1	A1/A55.1	-	-	
145C	(1)	3'-0"	6'-8"	1 3/4"	R	WD	1	HM	B6/A80.2	A6/A80.2	-	-	
146	(1)	3'-0"	4'-0"	1 3/4"	R2	WD	2	HM	B6/A80.2	A6/A80.2	-	-	
147A	(1)	3'-0"	6'-8"	1 3/4"	R	WD	7	HM	B6/A80.2	A6/A80.2	-	-	
147B	(1)	3'-0"	7'-0"	1 3/4"	R	HD AL	A1/A55.1	HD AL	A1/A55.1	A1/A55.1	-	-	
147C	(1)	3'-0"	4'-0"	1 3/4"	R2	WD	2	HM	B6/A80.2	A6/A80.2	-	-	
148	(1)	3'-0"	4'-0"	1 3/4"	R2	WD	2	HM	B6/A80.2	A6/A80.2	-	-	
149A	(1)	3'-0"	6'-8"	1 3/4"	R	WD	6	HM	B5/A80.2	A5/A80.2	-	-	
149B	(2)	3'-0"	6'-8"	1 3/4"	F	WD	1	HM	B6/A80.2	A6/A80.2	-	-	
C01	(2)	4'-0"	8'-0"	1 3/4"	F	WD	1	HM	B6/A80.2	A6/A80.2	-	-	
C02A	(2)	3'-0"	6'-8"	1 3/4"	SF2	WD	8	HM	B6/A80.2	A6/A80.2	-	20	
C02B	(2)	3'-0"	7'-0"	1 3/4"	SF2	HD AL	A1/A55.1	HD AL	A1/A55.1	A1/A55.1	-	-	
C03A	(1)	3'-4"	7'-10"	1 3/4"	F	HM	1	HM	B4/A80.2	A4/A80.2	-	-	
C03B	(1)	3'-0"	6'-8"	1 3/4"	F	WD	1	HM	B6/A80.2	A6/A80.2	-	-	
C04	(1)	3'-0"	8'-0"	1 3/4"	R	WD	3	AL	D5/A82.2	A6/A82.1	-	-	



HARRIMAN

AUBURN PORTLAND MANCHESTER

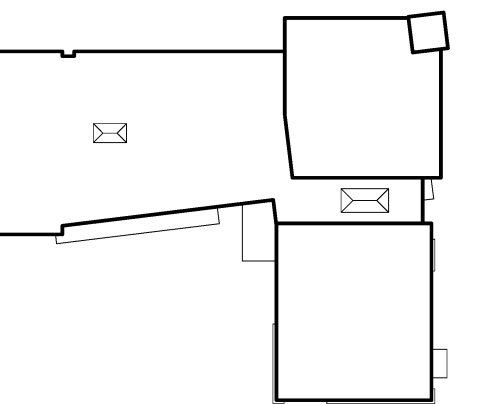
JEWISH COMMUNITY ALLIANCE OF SOUTHERN MAINE

PORTLAND, ME

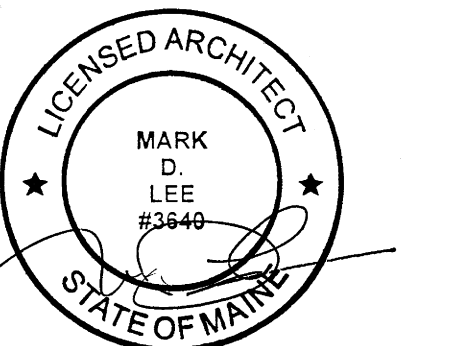
Harriman Project No. 15309

Key Plan

Proj North



Mark	Date	Description
-	09-04-15	DESIGN DEVELOPMENT REVIEW
-	03-26-16	CONSTRUCTION DOCUMENTS
1	04-15-16	ADDENDUM #1
2	04-21-16	ADDENDUM #2
3	07-22-16	CONFORMANCE SET



PA / PE	MDL	© 2016
Drawn By	JAE	Harriman Associates

DOOR SCHEDULE

A60.1