



HARRIMAN

AUBURN PORTLAND MANCHESTER

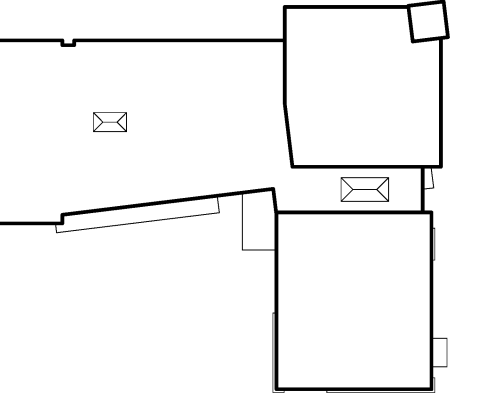
JEWISH COMMUNITY ALLIANCE OF SOUTHERN MAINE

PORTLAND, ME

Harriman Project No. 15309

Key Plan

Proj North

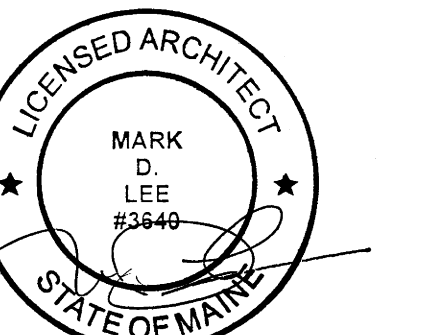


LEGEND

- FIRE ALARM
- EMERGENCY LIGHTING
- EXIT SIGNS
- EMERGENCY WALL PACK
- HORN STROBE
- STROBE
- PULL STATION
- FIRE EXTINGUISHER CABINET
- OCCUPANT LOAD
- OCCUPANCY SENSOR
- CARD READER
- MOTION DETECTOR
- DOOR CONTACT
- KEYPAD

Issues and Revisions

Mark	Date	Description
-	03-25-16	CONSTRUCTION DOCUMENTS
-	04-11-16	BUILDING PERMIT
1	04-15-16	ADDENDUM #1
2	07-22-16	CONFORMANCE SET



Drawing Scales

1/8" = 1'-0"

PA/PE: MDL

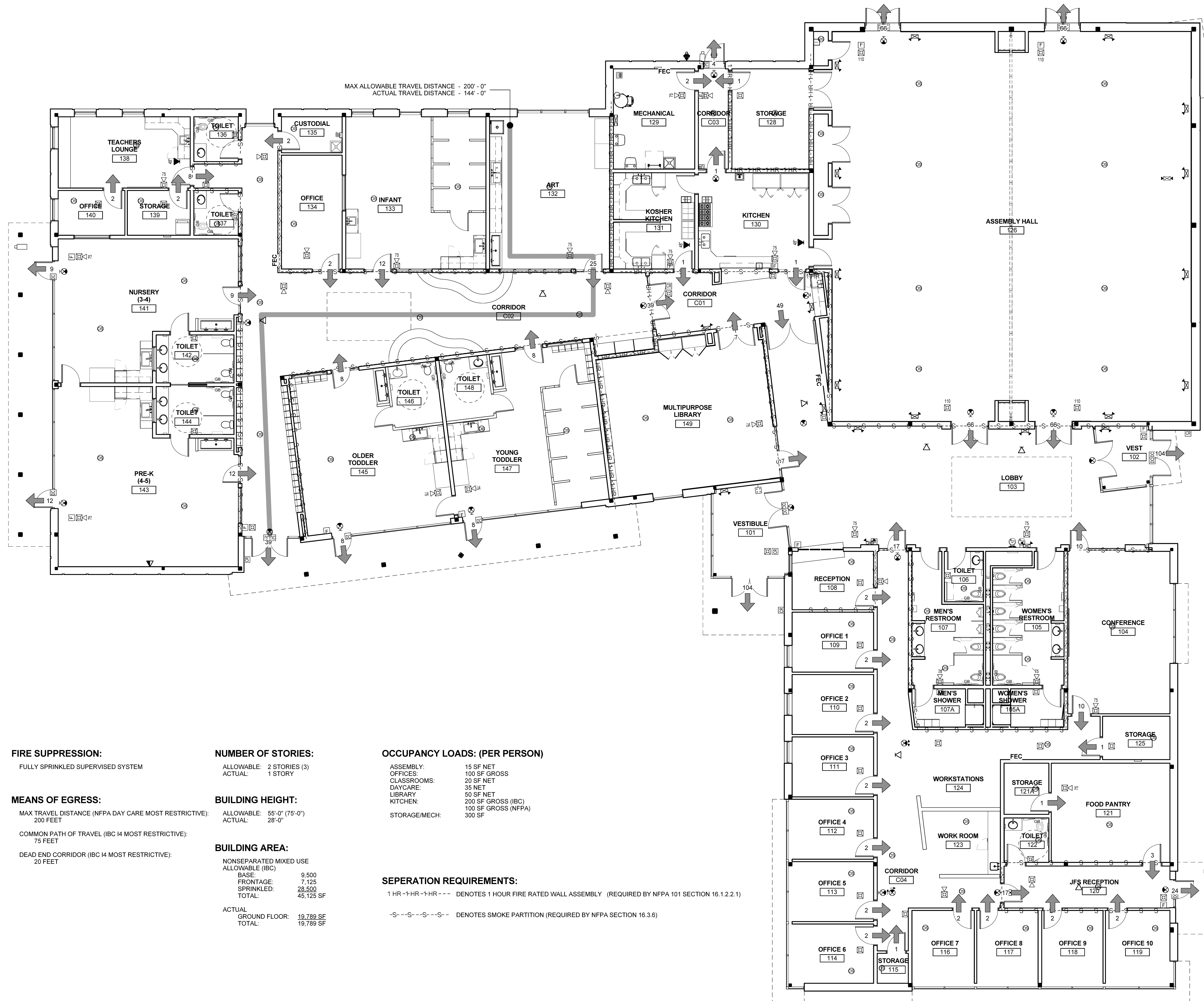
Drawn By: JAE

© 2016

Harriman Associates

CODE PLANS

A01.1



BUILDING DESIGN CODES:

- AMERICANS WITH DISABILITIES ACT (ADA 2010)
- INTERNATIONAL ENERGY CONSERVATION CODE (2009)
- NFPA 101 LIFE SAFETY CODE (2009)
- INTERNATIONAL BUILDING CODE (2009)
- INTERNATIONAL MECHANICAL CODE (2009)
- ASHRAE / IES STANDARD 90.1-2007
- NFPA 70 NATIONAL ELECTRIC CODE (2008)
- STATE OF MAINE INTERNAL PLUMBING CODE (2009)

OCCUPANCY CLASSIFICATIONS:

- IBC: ASSEMBLY (A3)
- BUSINESS EDUCATION DAYCARE (I4)
- NFPA: ASSEMBLY BUSINESS DAY CARE

CONSTRUCTION TYPE:

- NFPA: TYPE IIB (000)
- IBC: TYPE IIB

FIRE SUPPRESSION:

FULLY SPRINKLED SUPERVISED SYSTEM

MEANS OF EGRESS:

- MAX TRAVEL DISTANCE (NFPA DAY CARE MOST RESTRICTIVE): 200 FEET
- COMMON PATH OF TRAVEL (IBC I4 MOST RESTRICTIVE): 75 FEET
- DEAD END CORRIDOR (IBC I4 MOST RESTRICTIVE): 20 FEET

NUMBER OF STORIES:

ALLOWABLE: 2 STORIES (3)

ACTUAL: 1 STORY

BUILDING HEIGHT:

ALLOWABLE: 55'-0" (75'-0")

ACTUAL: 28'-0"

BUILDING AREA:

NONSEPARATED MIXED USE ALLOWABLE (IBC)

BASE: 9,500

FRONTAGE: 7,125

SPRINKLED: 28,500

TOTAL: 45,125 SF

ACTUAL

GROUND FLOOR: 19,789 SF

TOTAL: 19,789 SF

OCCUPANCY LOADS: (PER PERSON)

- ASSEMBLY: 15 SF NET
- OFFICES: 100 SF GROSS
- CLASSROOMS: 20 SF NET
- DAYCARE: 35 SF NET
- LIBRARY: 50 SF NET
- KITCHEN: 200 SF GROSS (IBC)
- 100 SF GROSS (NFPA)
- STORAGE/MECH: 300 SF

SEPERATION REQUIREMENTS:

1 HR -> 1 HR -> 1 HR -> DENOTES 1 HOUR FIRE RATED WALL ASSEMBLY (REQUIRED BY NFPA 101 SECTION 16.1.2.1)

-S- -S- -S- -S- DENOTES SMOKE PARTITION (REQUIRED BY NFPA SECTION 16.3.6)

MAX ALLOWABLE TRAVEL DISTANCE - 200'-0"

ACTUAL TRAVEL DISTANCE - 144'-0"