



HARRIMAN

AUBURN PORTLAND MANCHESTER

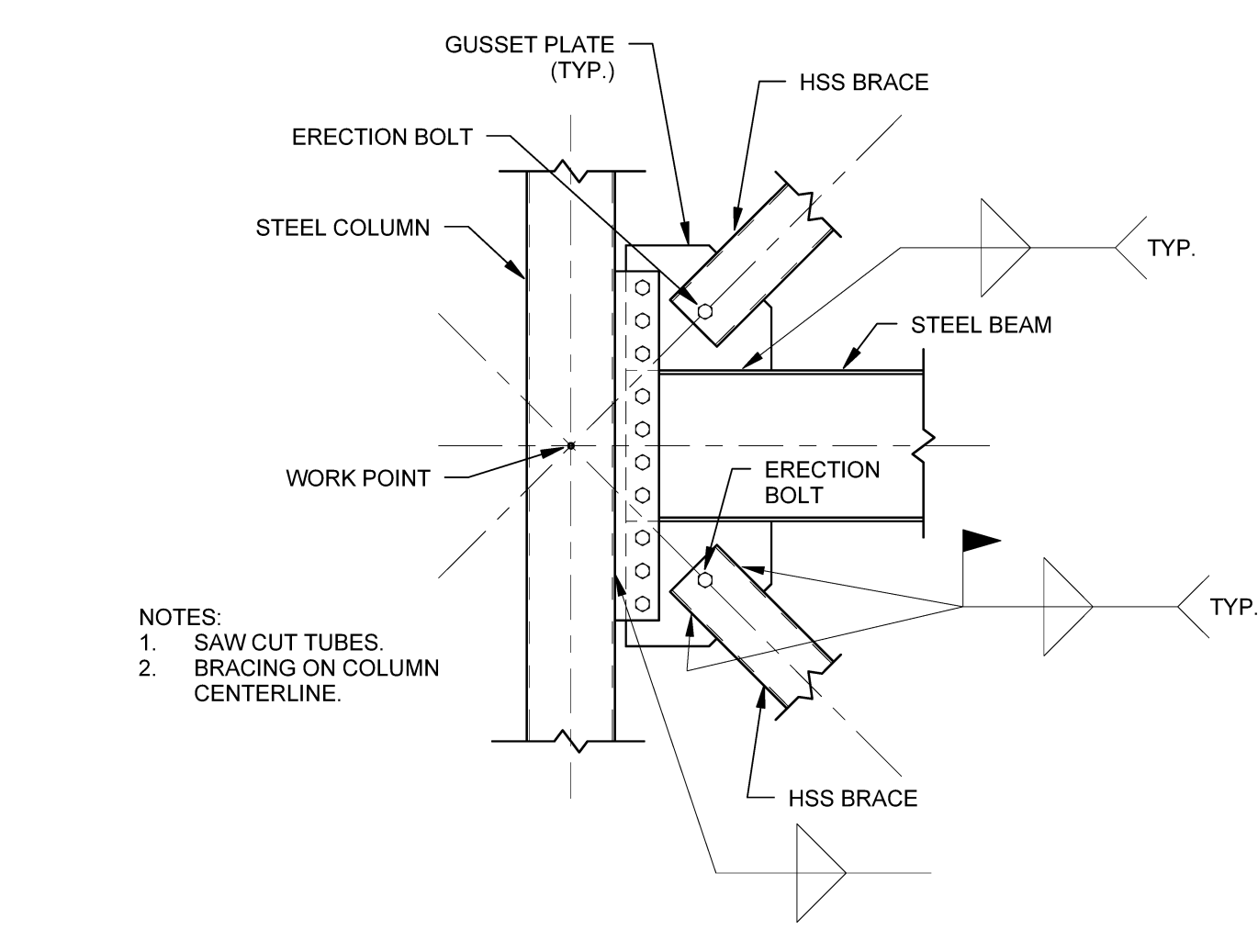
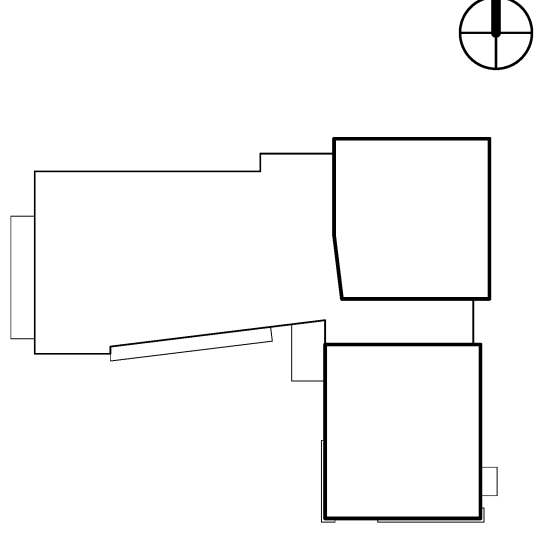
JEWISH COMMUNITY ALLIANCE OF SOUTHERN MAINE

PORTLAND, ME

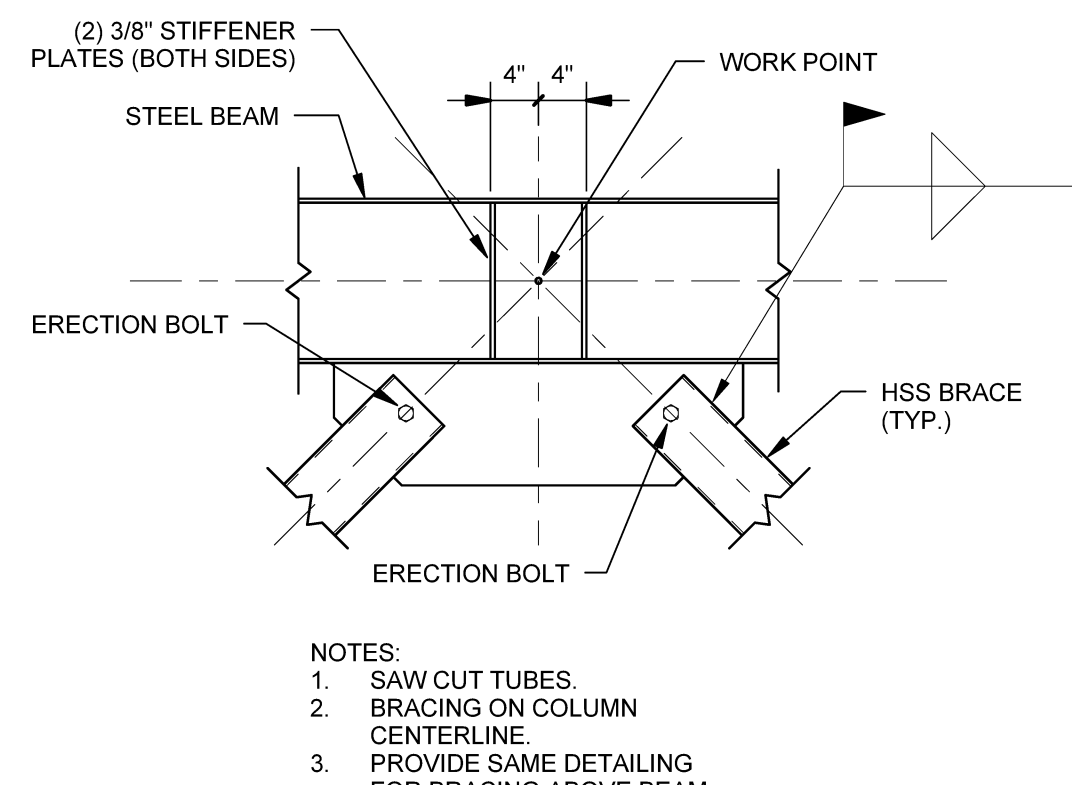
Harriman Project No. 15309

Key Plan

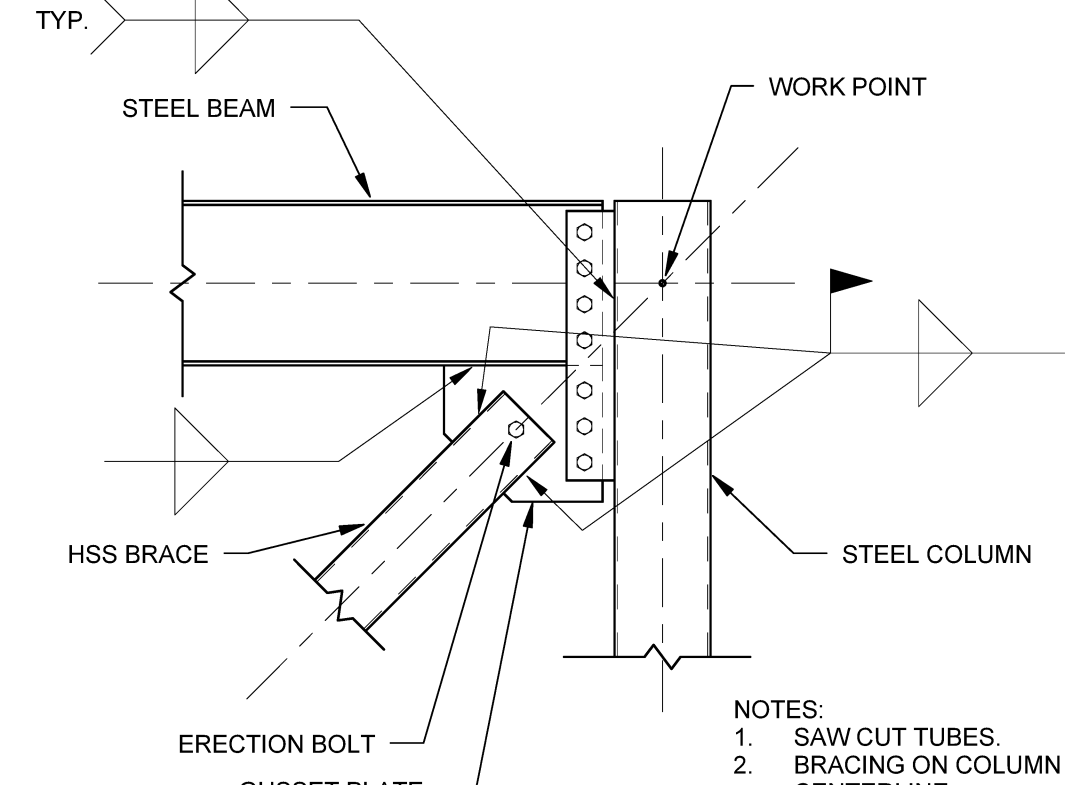
Proj North



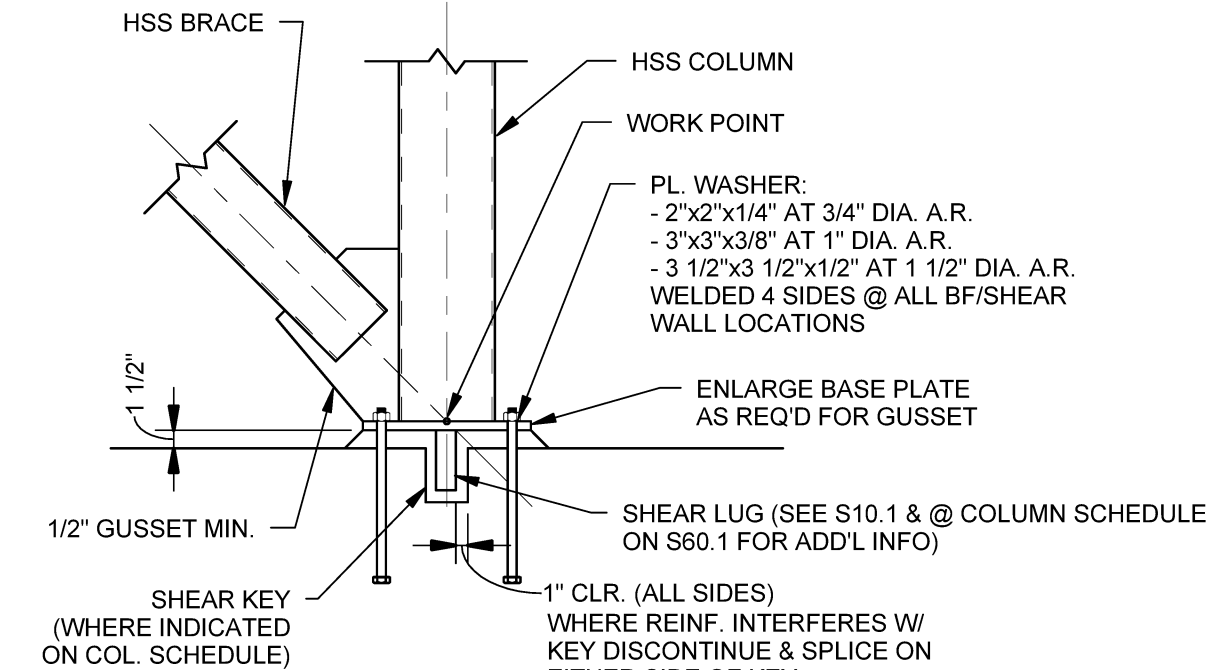
D1 TYP. BRACE DETAIL
SCALE: 3/4" = 1'-0"



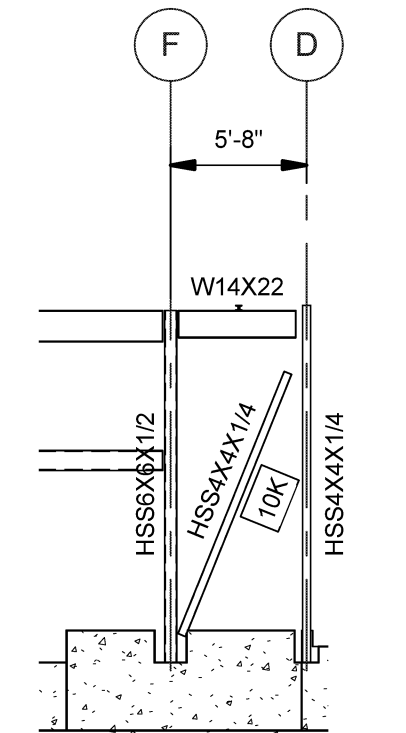
D2 TYP. BRACE DETAIL
SCALE: 3/4" = 1'-0"



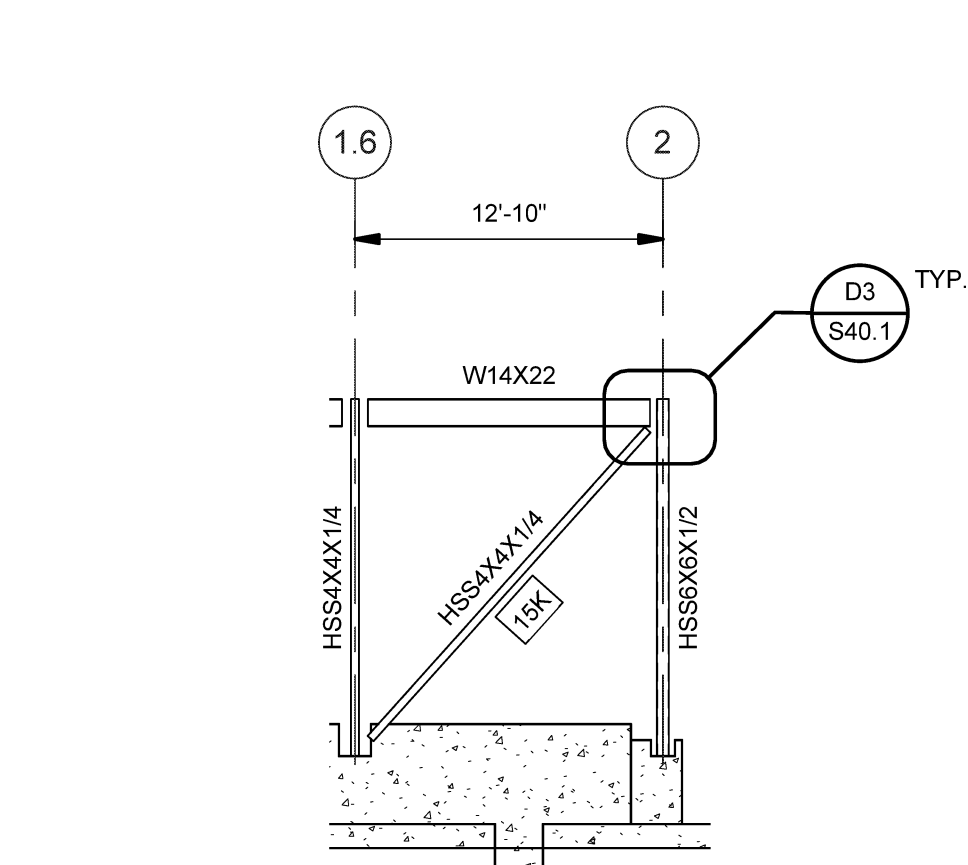
D3 TYP. BRACE DETAIL
SCALE: 3/4" = 1'-0"



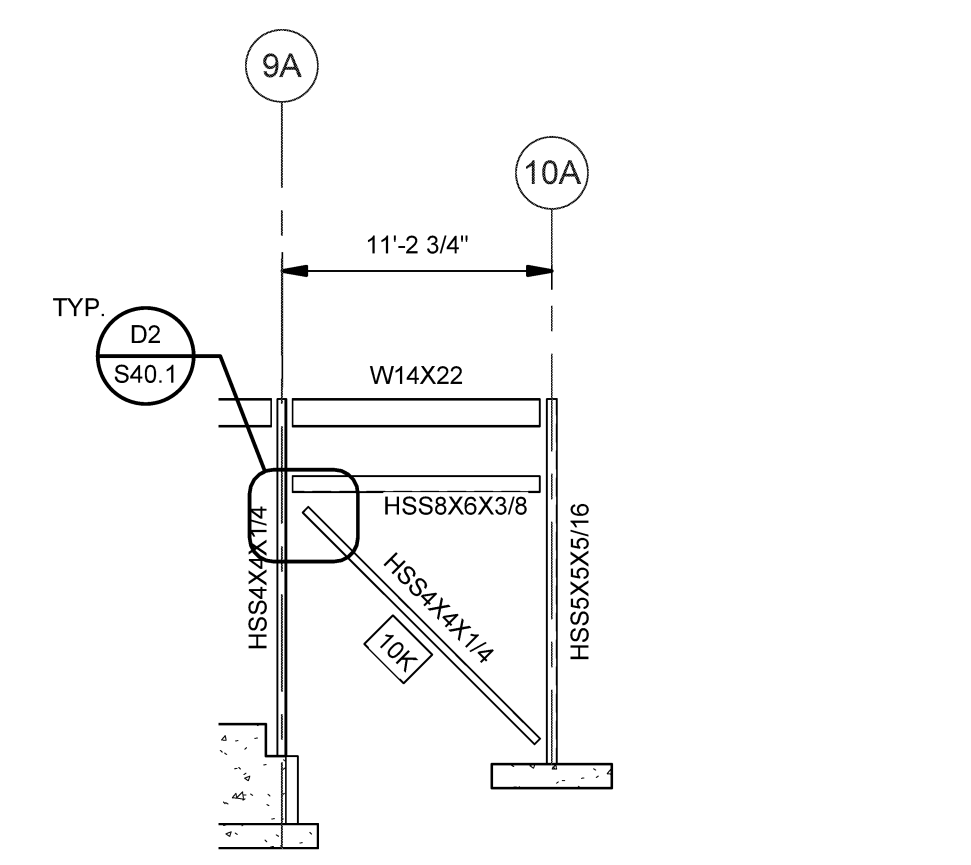
D5 TYP. COL. BASE DETAIL @ BRACE
SCALE: 3/4" = 1'-0"



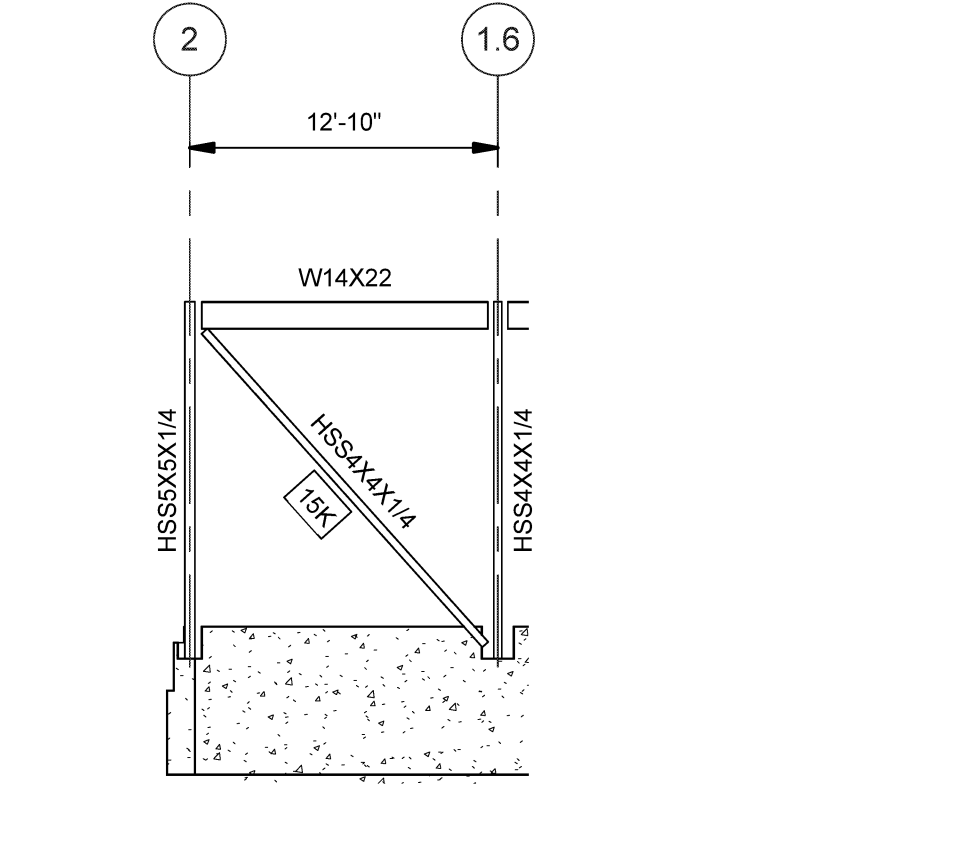
D6 BRACING ELEVATION - LINE 1
SCALE: 1/8" = 1'-0"



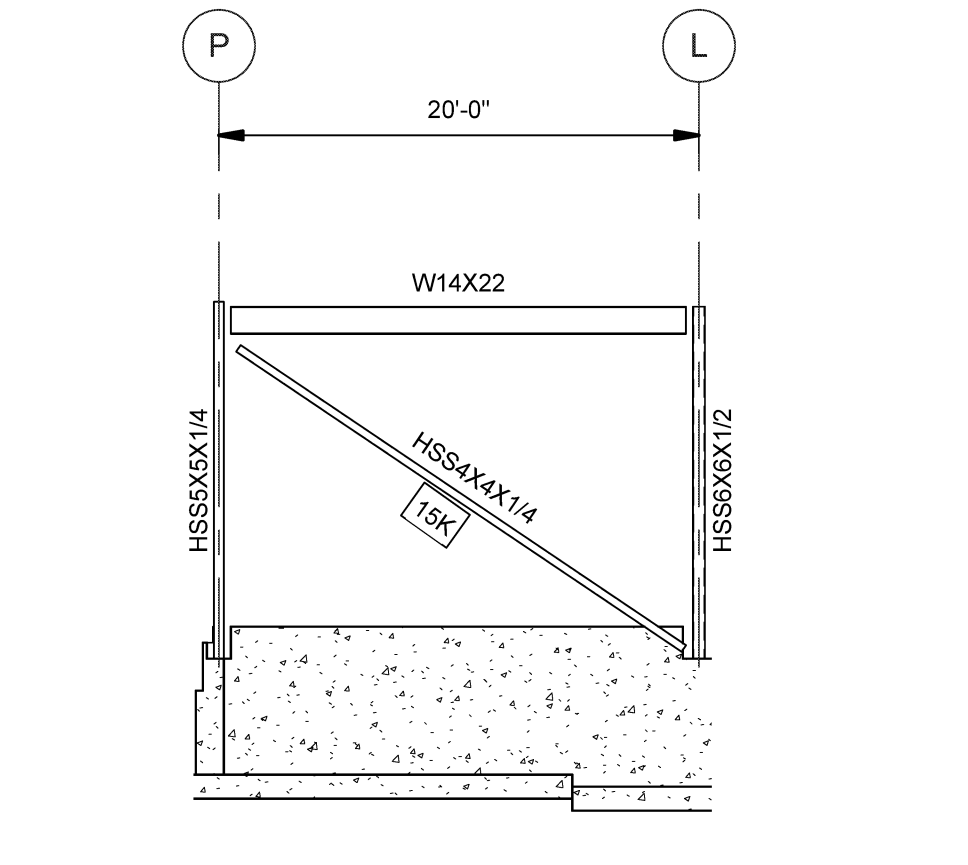
C1 BRACING ELEVATION - LINE D
SCALE: 1/8" = 1'-0"



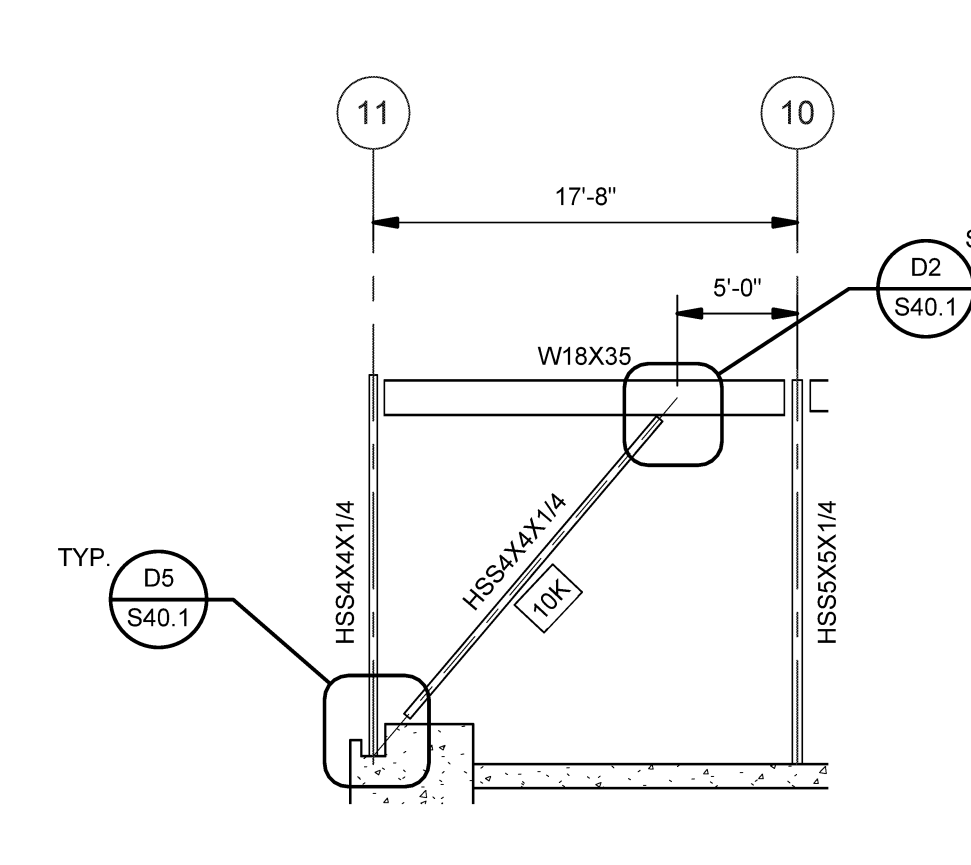
C2 BRACING ELEVATION - LINE BB
SCALE: 1/8" = 1'-0"



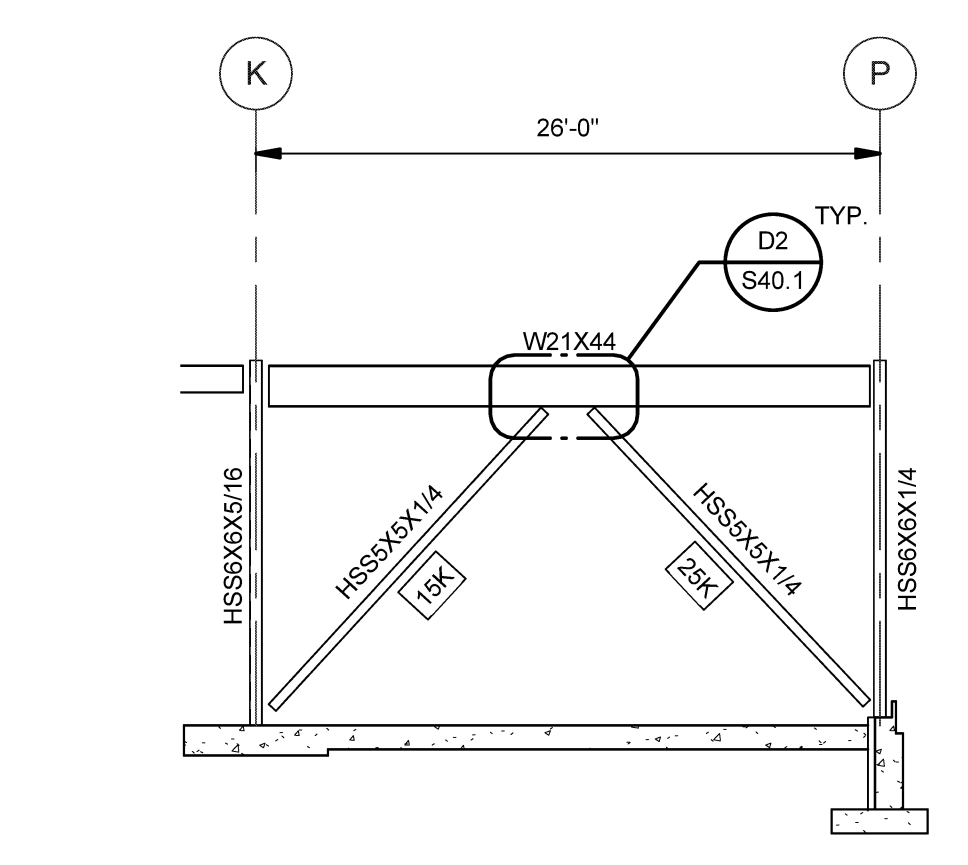
C3 BRACING ELEVATION - LINE P
SCALE: 1/8" = 1'-0"



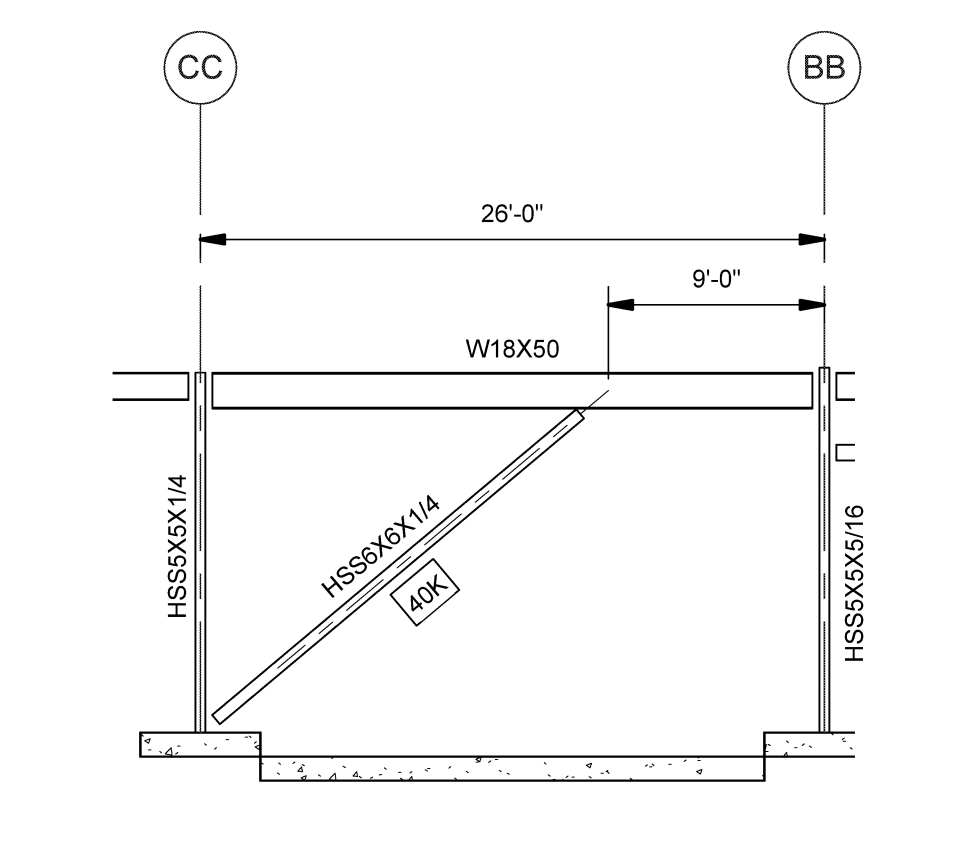
C4 BRACING ELEVATION - LINE 1
SCALE: 1/8" = 1'-0"



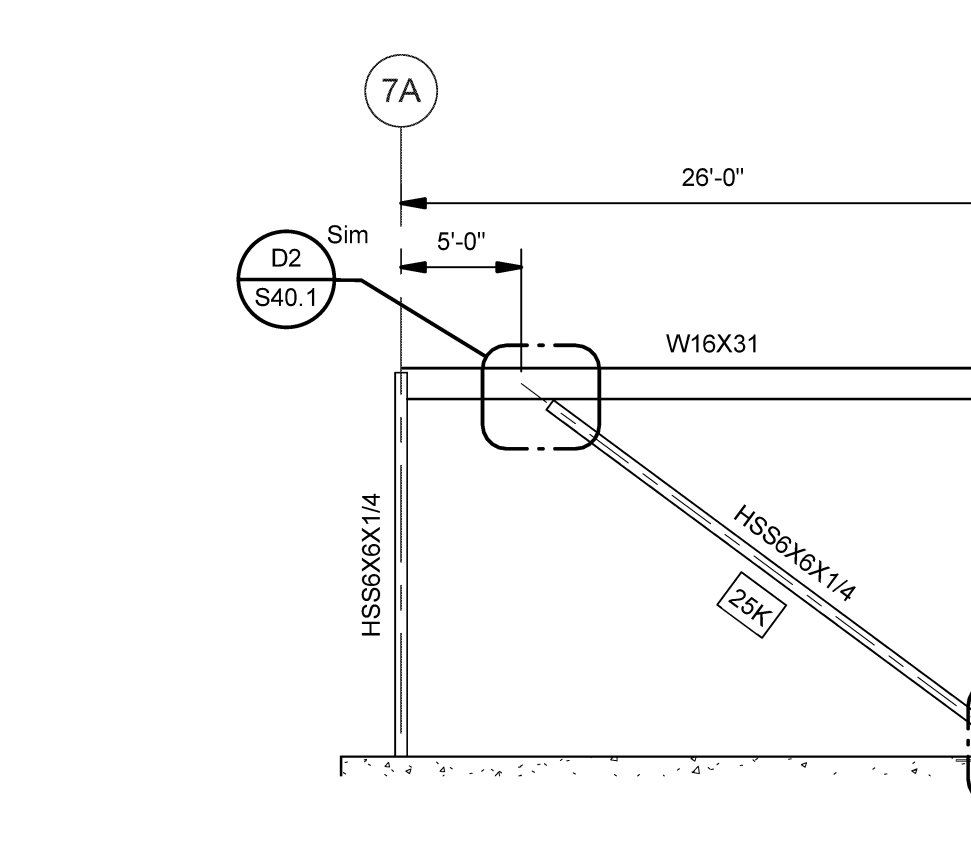
C5 BRACING ELEVATION - LINE E
SCALE: 1/8" = 1'-0"



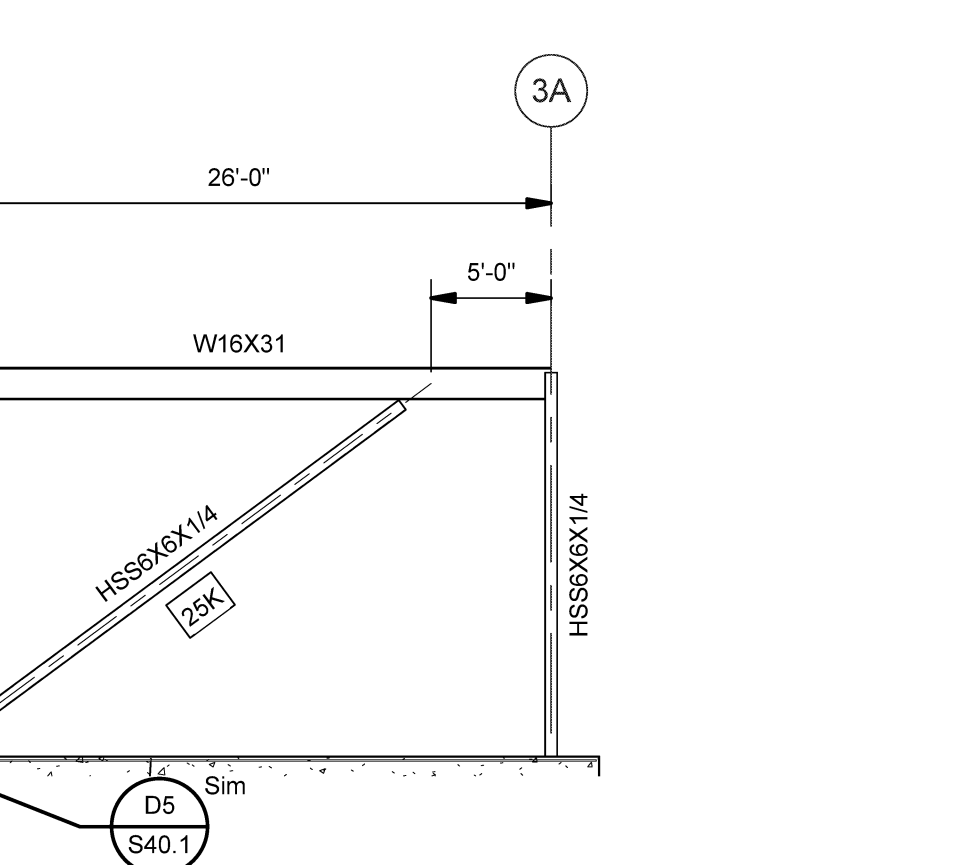
C6 BRACING ELEVATION - LINE 4
SCALE: 1/8" = 1'-0"



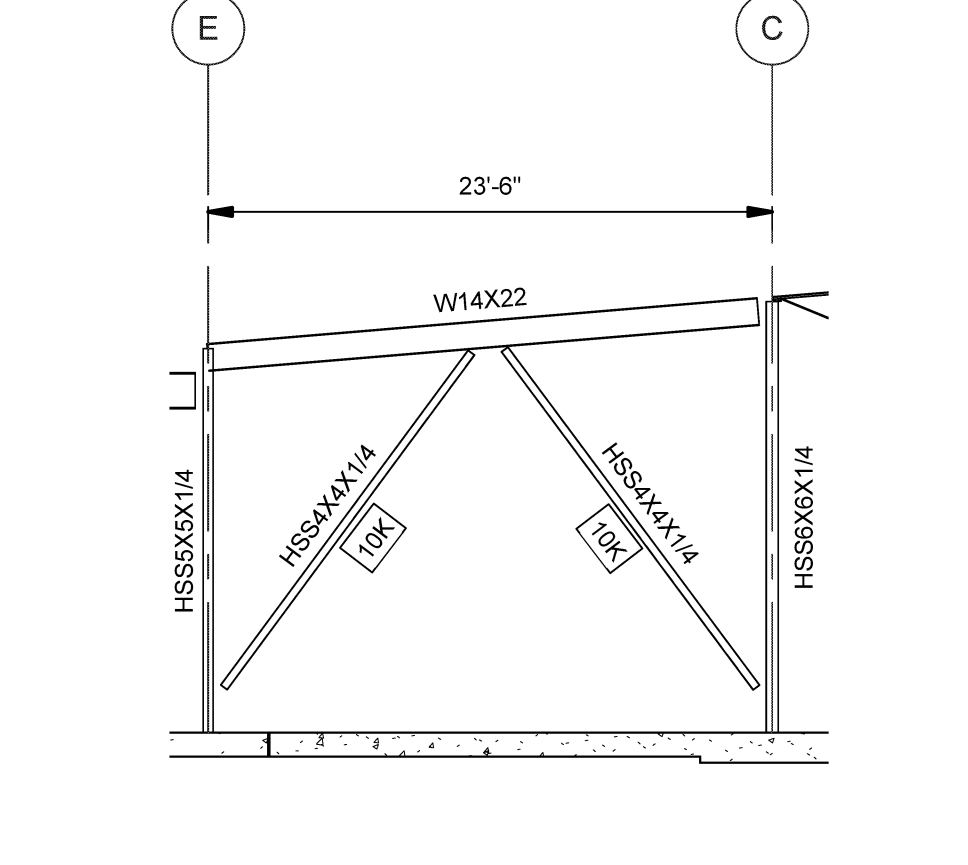
B1 BRACING ELEVATION - LINE 10A
SCALE: 1/8" = 1'-0"



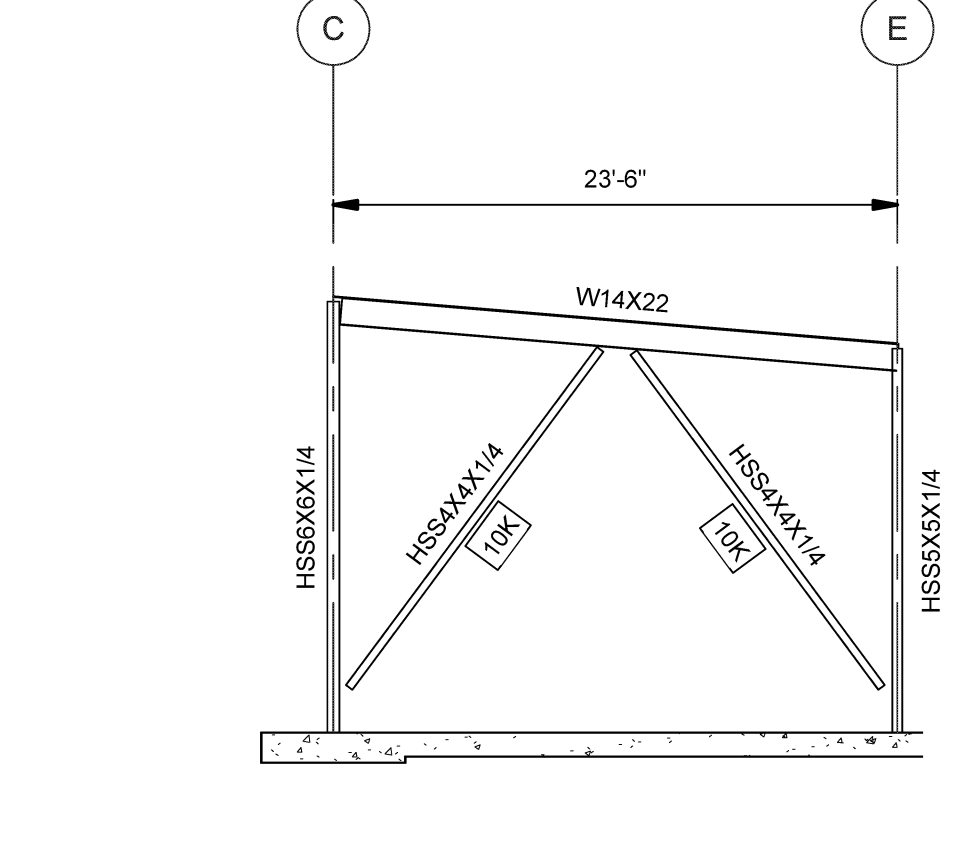
B2 BRACING ELEVATION - LINE DD
SCALE: 1/8" = 1'-0"



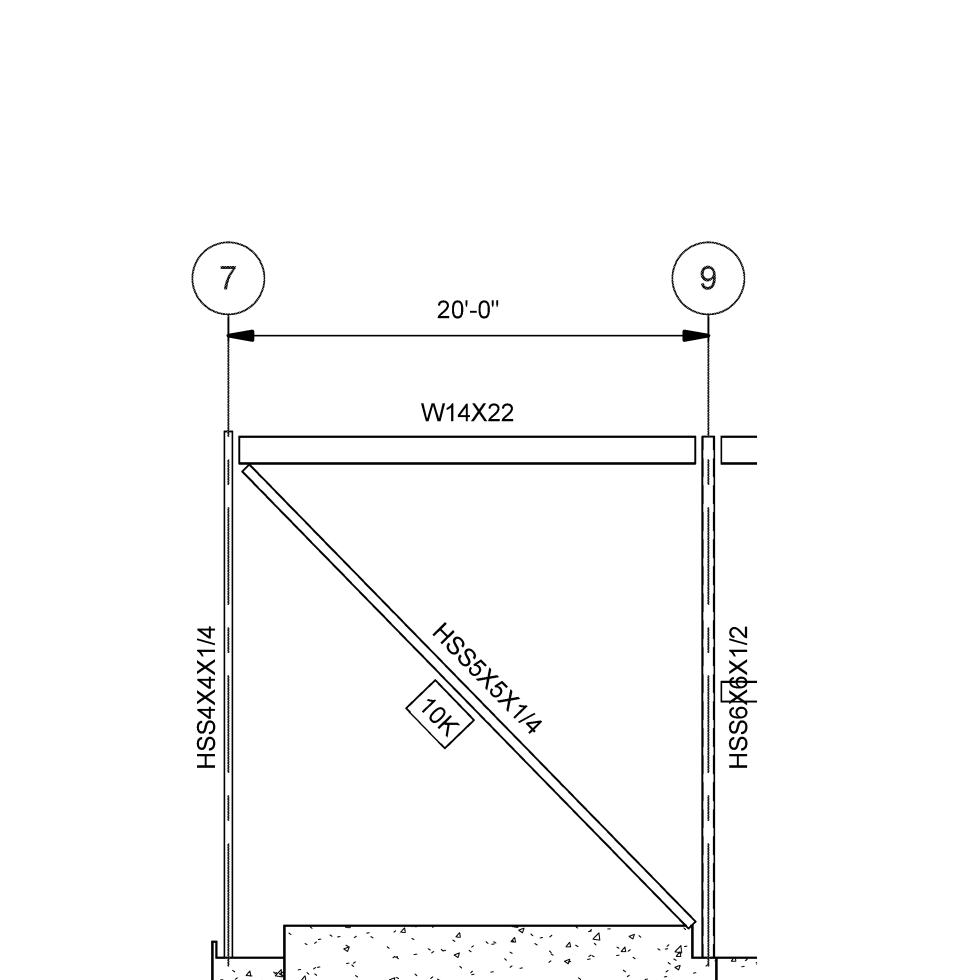
B4 BRACING ELEVATION - LINE 9
SCALE: 1/8" = 1'-0"



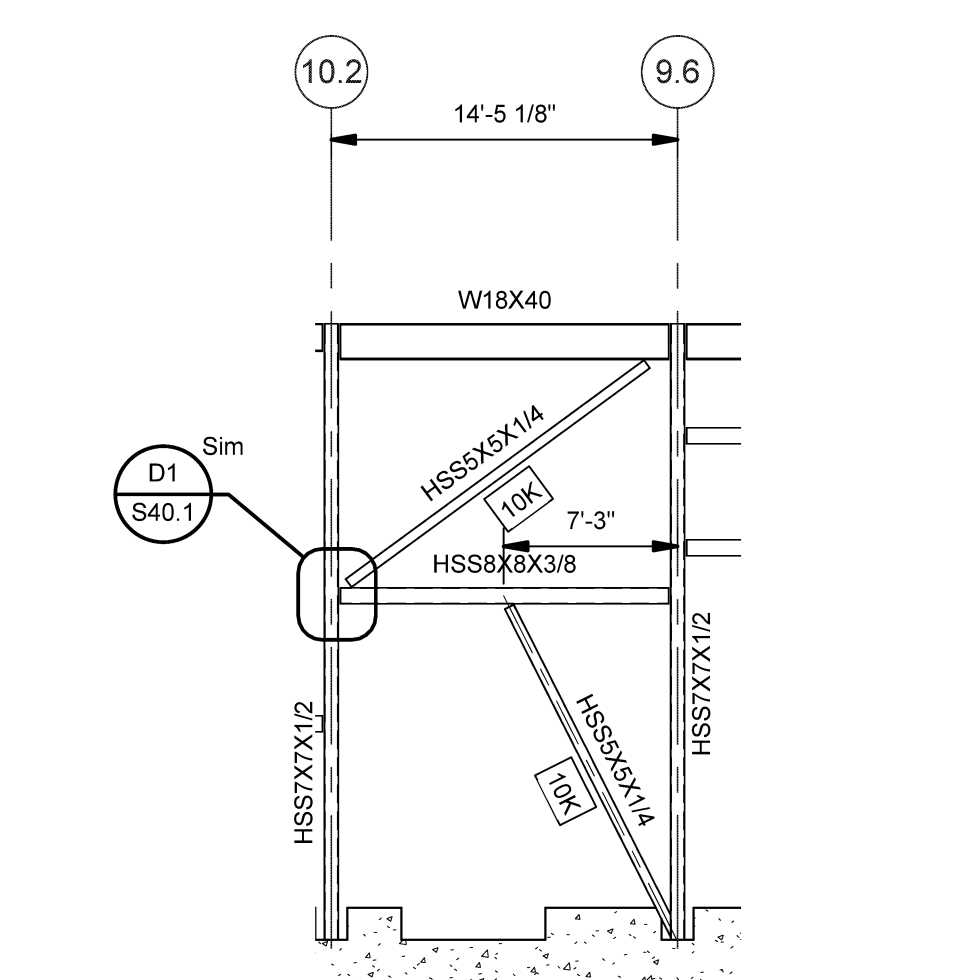
B5 BRACING ELEVATION - LINE 10
SCALE: 1/8" = 1'-0"



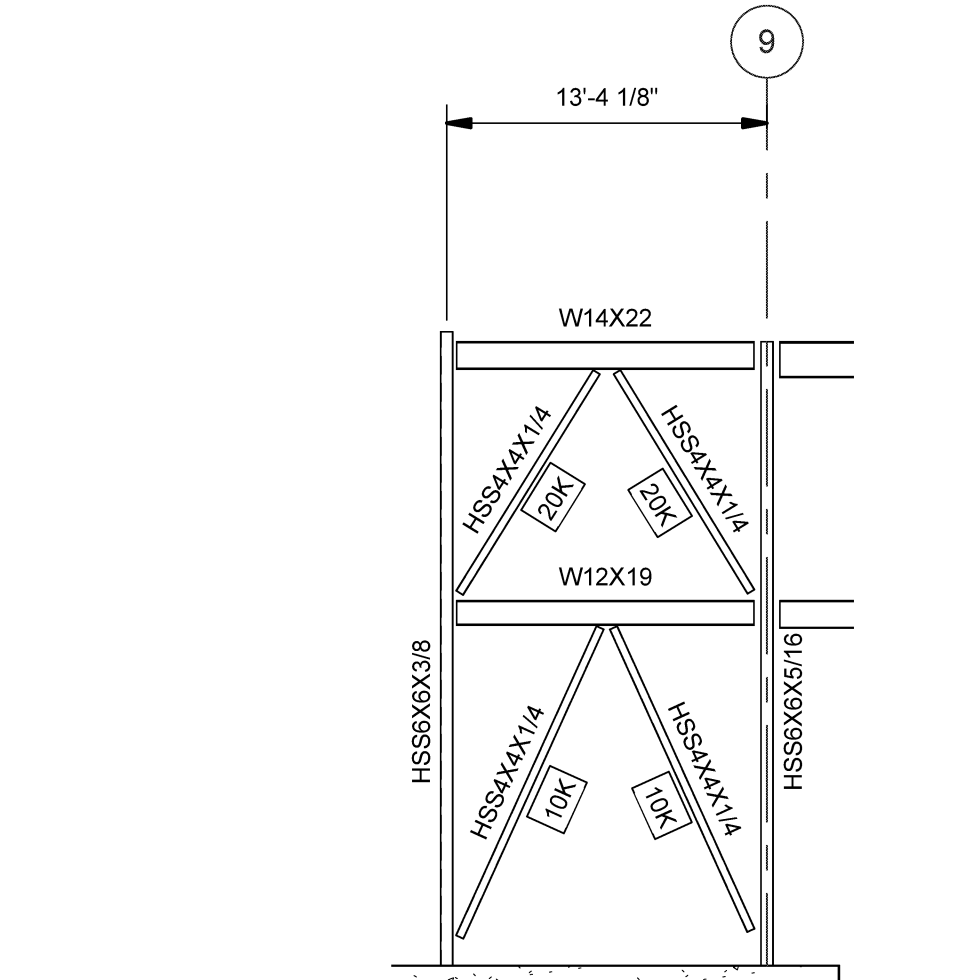
B6 BRACING ELEVATION - LINE Q
SCALE: 1/8" = 1'-0"



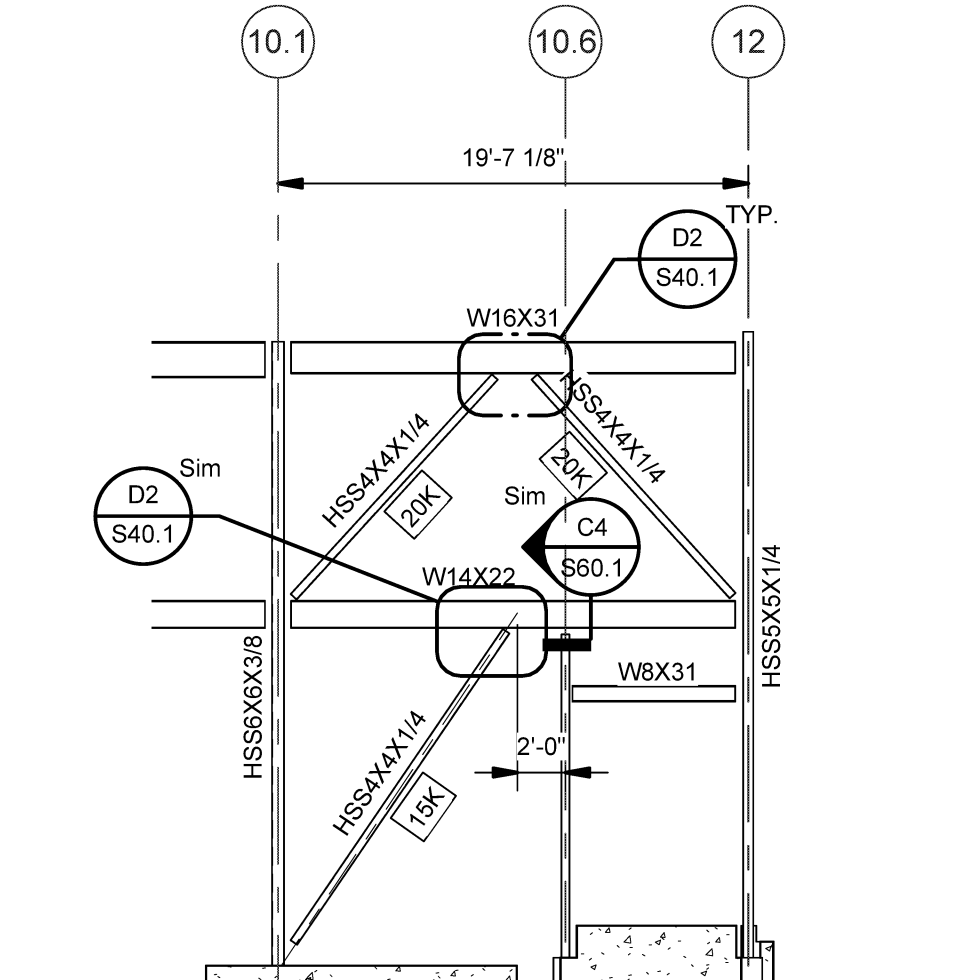
A1 BRACING ELEVATION - LINE A
SCALE: 1/8" = 1'-0"



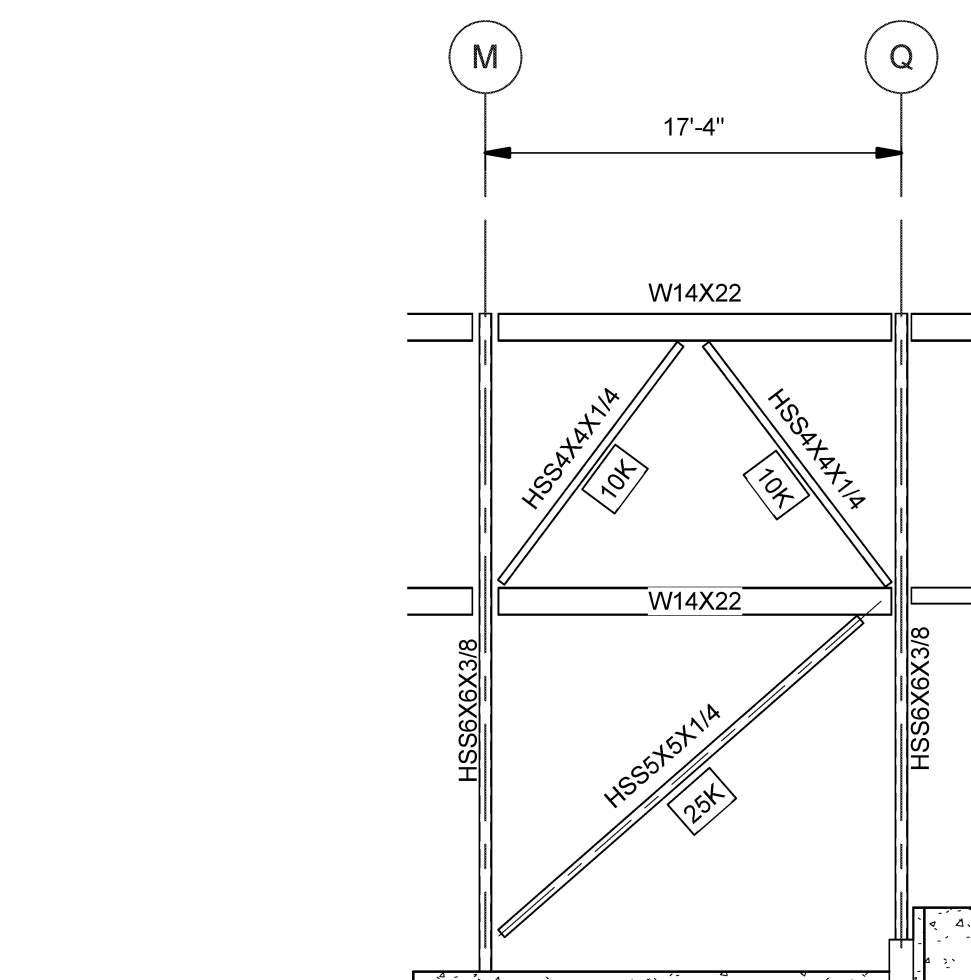
A2 BRACING ELEVATION - LINE R
SCALE: 1/8" = 1'-0"



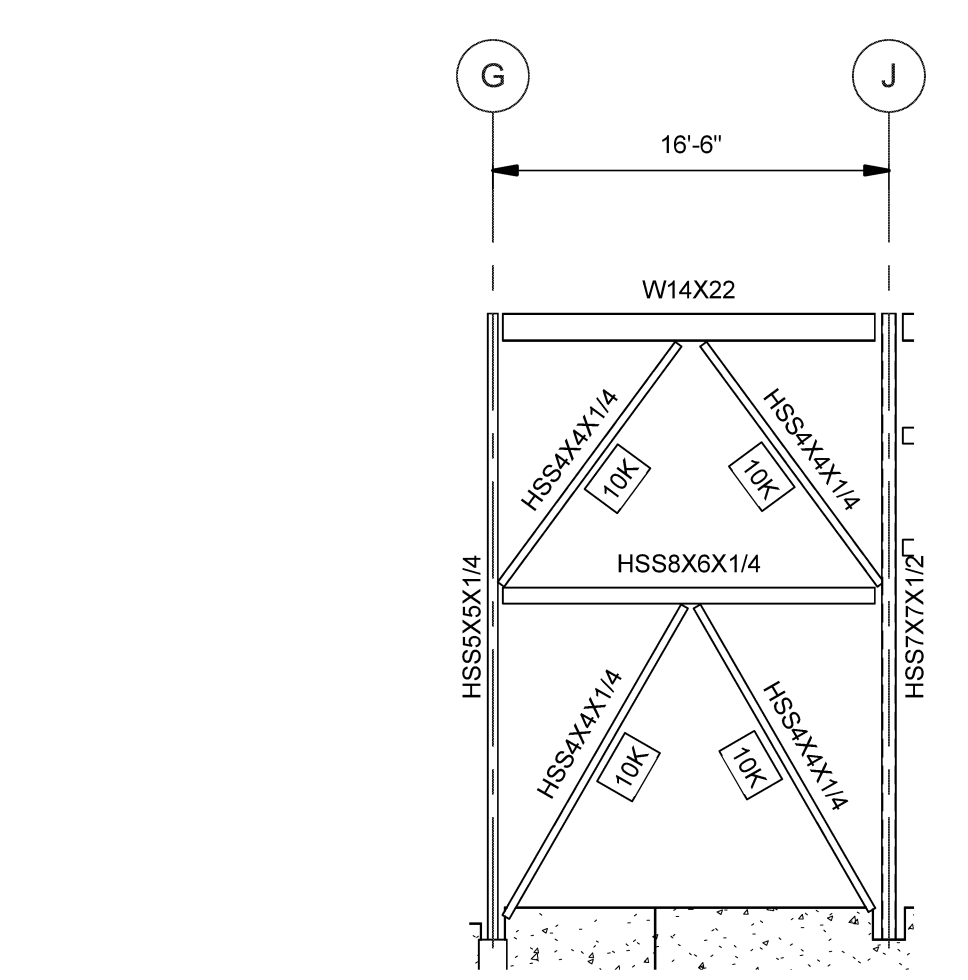
A3 BRACING ELEVATION - LINE G
SCALE: 1/8" = 1'-0"



A4 BRACING ELEVATION - LINE G
SCALE: 1/8" = 1'-0"



A5 BRACING ELEVATION - LINE 8
SCALE: 1/8" = 1'-0"

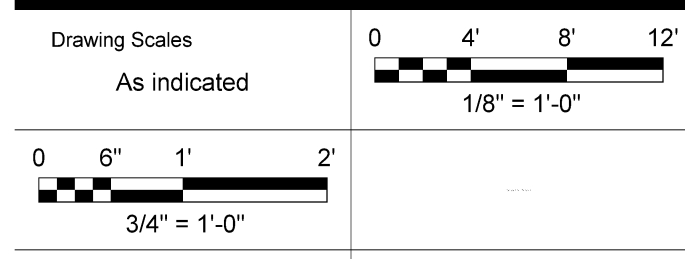
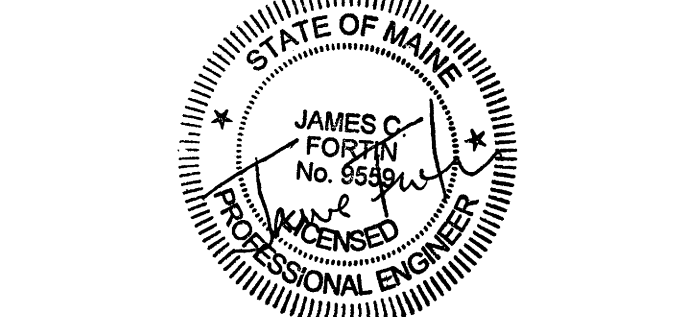


A6 BRACING ELEVATION - LINE 12
SCALE: 1/8" = 1'-0"

- BRACING NOTES:
- LOADS INDICATED ON FRAME ELEVATIONS ARE THE UNFACTORED AXIAL LOAD.
 - LOADS SHOWN MAY BE IN TENSION OR COMPRESSION.
 - S.L.X - INDICATES SHEAR LUG. SEE DETAILS ON S40.2 FOR ADD'L INFO.
 - CONNECTION DESIGN & CALCULATIONS TO BE COMPLETED BY AN ENGINEER REGISTERED IN THE STATE OF MAINE. SUBMIT CALCULATIONS FOR REVIEW. DESIGN OF CONNECTIONS SHALL BE COMPLETED USING THE UNIFORM FORCE METHOD.
 - SLIP CRITICAL (SC) ARE REQUIRED AT ALL MOMENT CONNECTIONS & BRACED FRAME CONNECTIONS.

Issues and Revisions

Mark	Date	Description
-	09-04-15	DESIGN DEVELOPMENT REVIEW
-	03-25-16	CONSTRUCTION DOCUMENTS



PA / PE: JCF © 2016 Harriman Associates
Drawn By: ZPP

BRACING ELEVATIONS

S40.1