

HARRIMAN

AUBURN PORTLAND MANCHESTER

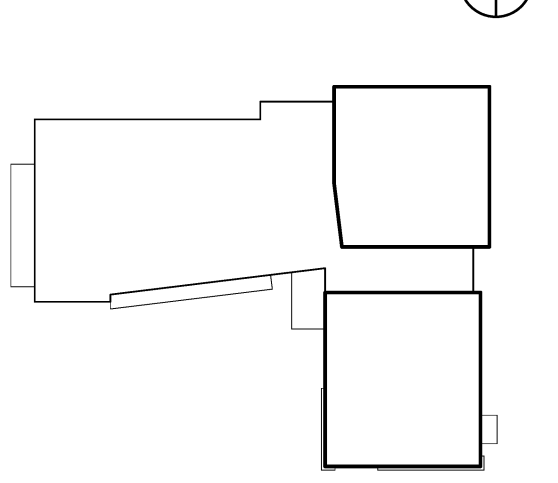
JEWISH COMMUNITY ALLIANCE OF SOUTHERN MAINE

PORTLAND, ME

Harriman Project No. 15309

Key Plan

Proj North

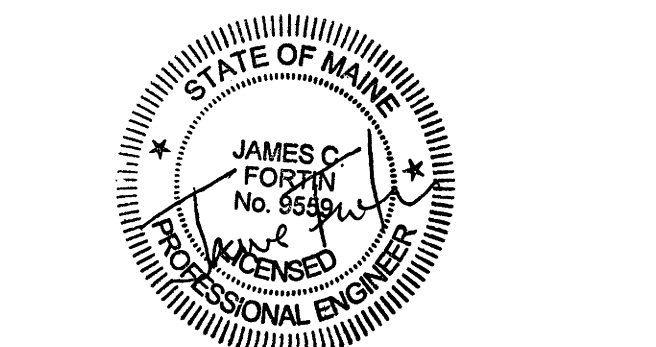


FRAMING NOTES

- 1. TOP OF STEEL ELEVATION IS REFERENCED (+/-) FROM FINISH FLOOR ELEVATION 106.00' (+0.0').
2. SEE ADDITIONAL APPLICABLE FRAMING NOTES ON DRAWING S60.1.
3. ALL STEEL BEAMS TO CONFORM TO ASTM A992 (Fy=50 KSI).
4. ALL RECTANGULAR HSS COLUMNS TO CONFORM TO ASTM A500 (GR. B) (Fy=46 KSI).
5. ALL ROUND STEEL PIPE TO CONFORM TO ASTM A53 (GR. B) (Fy=35 KSI).
6. --- INDICATES DIAGONAL STEEL BRACINGS. SEE S40 DRAWINGS FOR ELEVATIONS AND DETAILS.
7. PROVIDE ALL JOIST BRIDGING, INCLUDING UPLIFT BRIDGING. PER SJI REQUIREMENTS.
8. "T.J." INDICATES BOLTED THE JOIST. EXTEND BOTTOM CHORD AT COLUMNS (DO NOT WELD) SEE TYP. DETAIL.
9. D1 INDICATES SPAN OF 11'-2" - 22GA GALV. ROOF DECK.
10. D2 INDICATES SPAN OF 11'-2" - 18GA GALV. ROOF DECK.
11. PROVIDE UPLIFT BRIDGING AS SHOWN AT FIRST BOTTOM CHORD PANEL POINT (TYP.) NET UPLIFT PRESSURE = 10 PSF.
12. --- INDICATES MOMENT CONNECTION.
13. FRAMING IS EQUALLY SPACED BETWEEN COLUMN GRIDS (U.N.O. ON PLANS).
14. SECTIONS AND DETAILS SHOWN ON STRUCTURAL DRAWINGS SHALL BE CONSIDERED TYPICAL FOR SIMILAR FRAMING CONDITIONS NOT SPECIFICALLY REFERENCED.

Issues and Revisions

Table with 3 columns: Mark, Date, Description. Row 1: 09-04-15 DESIGN DEVELOPMENT REVIEW. Row 2: 03-25-16 CONSTRUCTION DOCUMENTS.

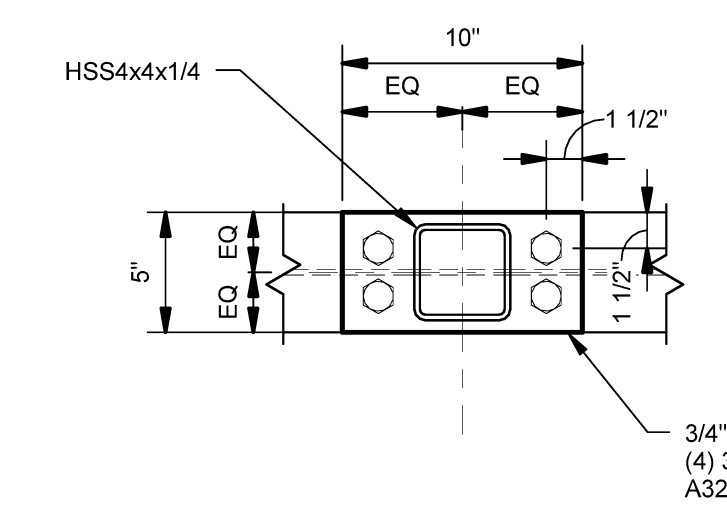
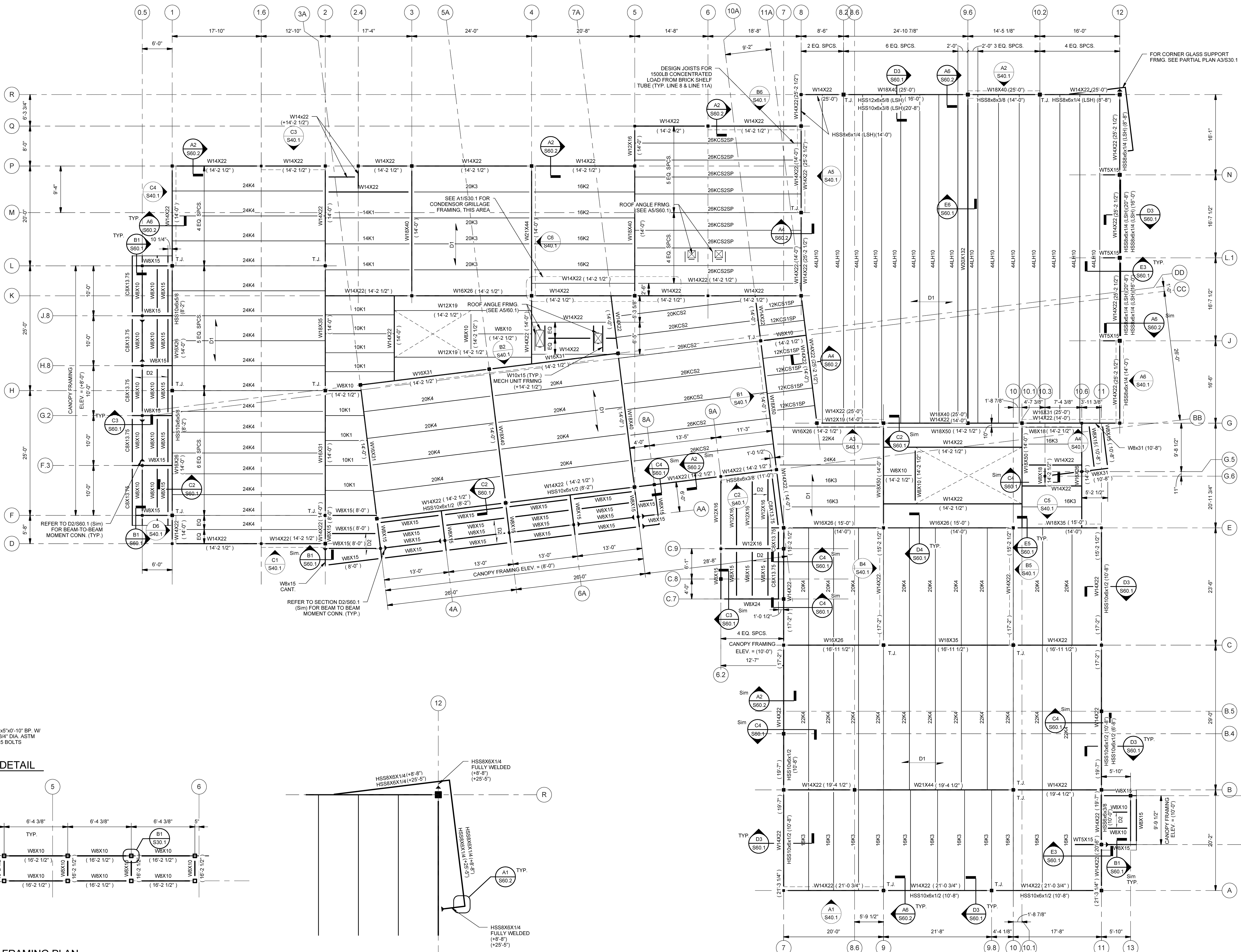


Drawing Scales: 0 4 8 12. As indicated. 1/4" = 1'-0".

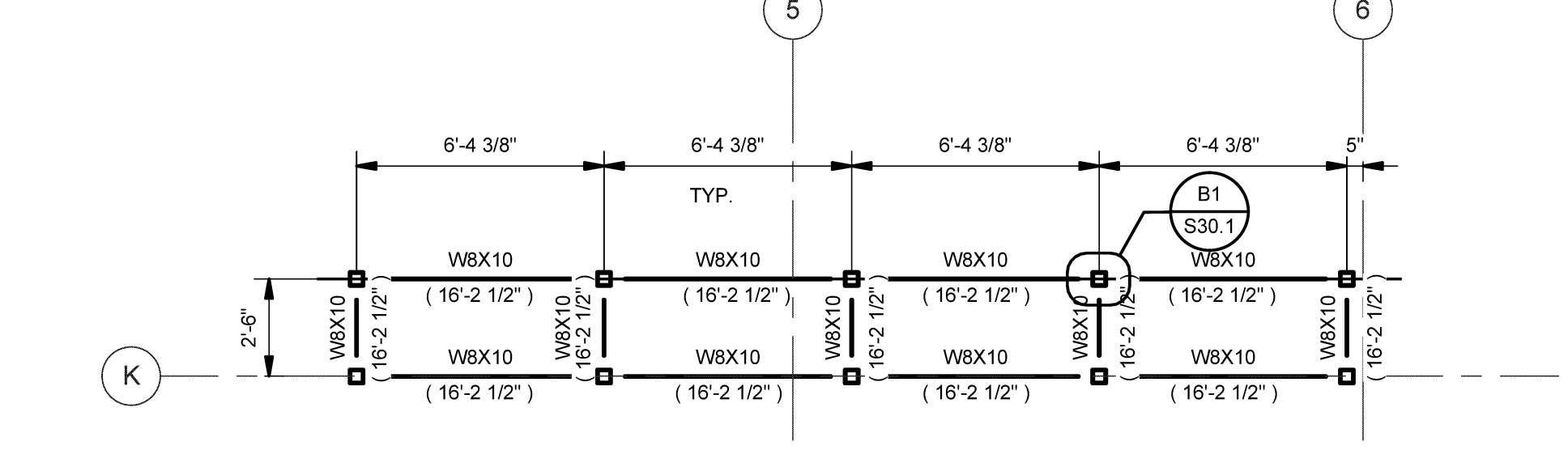
PA/PE: JCF © 2016 Harriman Associates. Drawn By: ZPP

ROOF & PARTIAL FRAMING PLAN

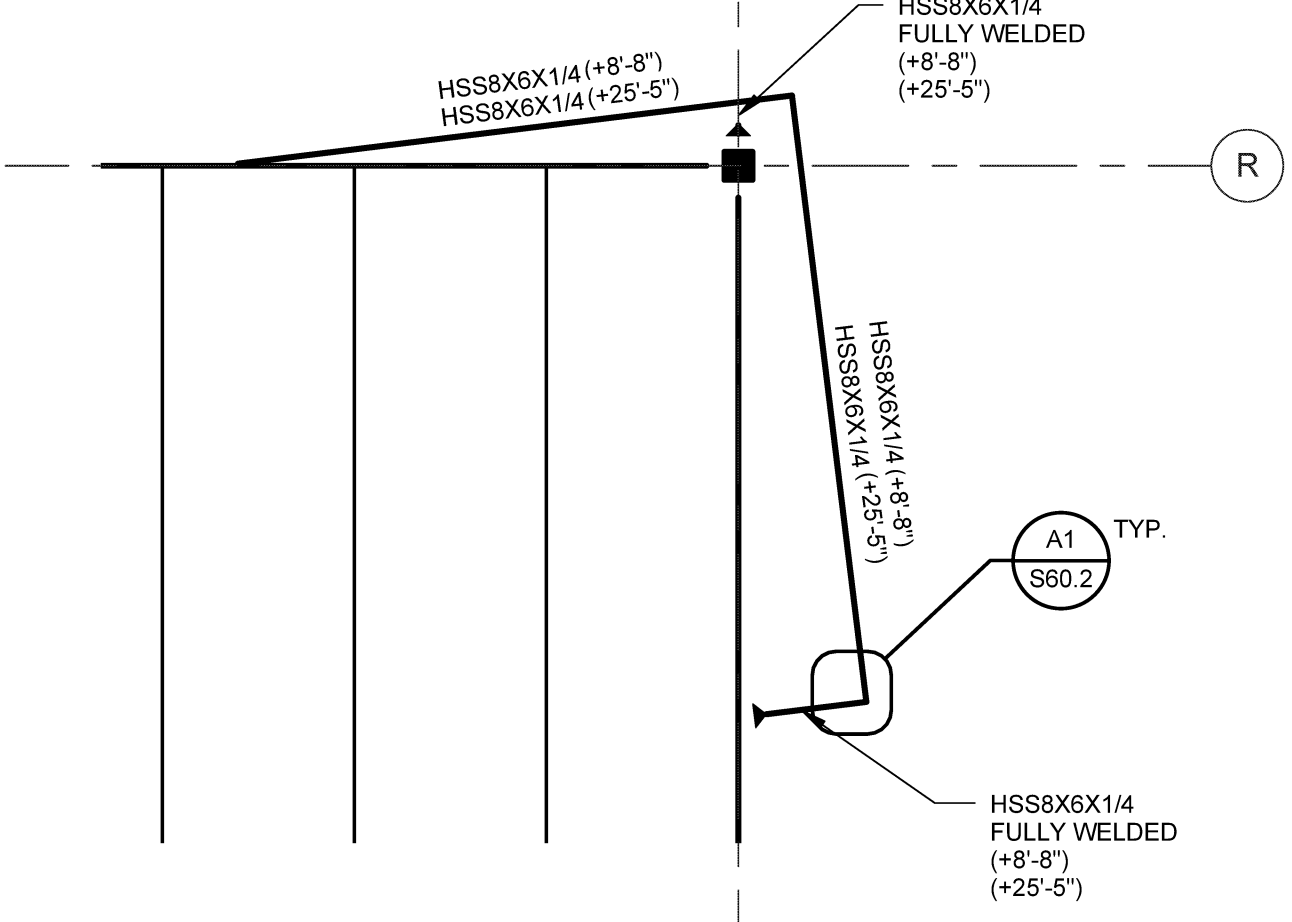
S30.1



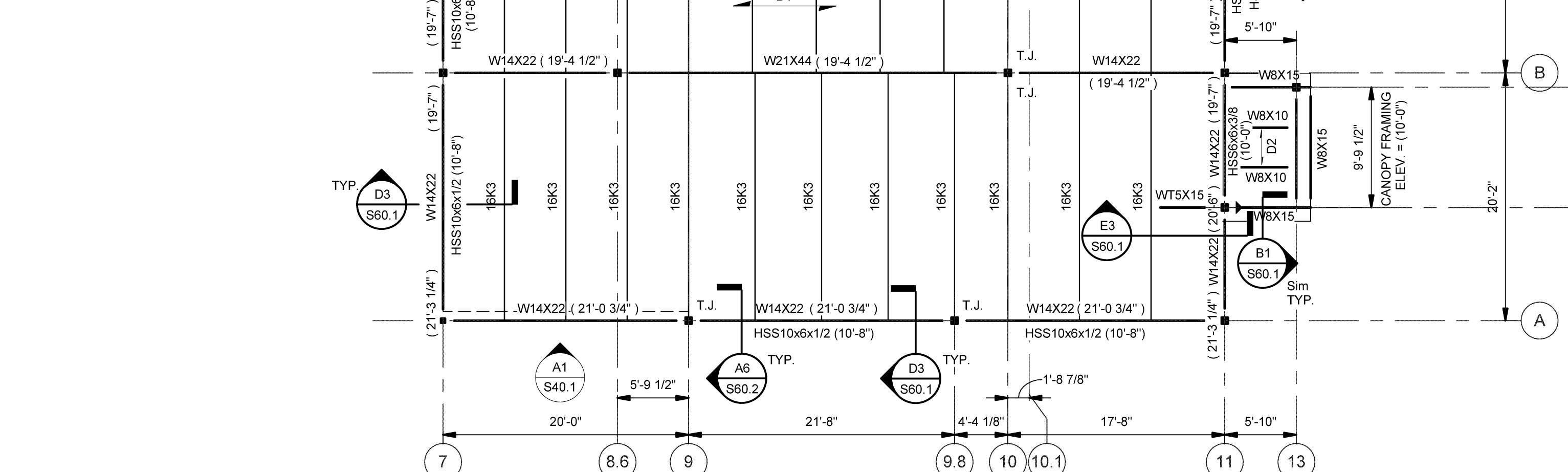
B1 GRILLAGE BASE PLATE DETAIL SCALE: 1 1/2" = 1'-0"



A1 CONDENSER GRILLAGE FRAMING PLAN SCALE: 1/4" = 1'-0"



A3 PARTIAL FRAMING PLAN SCALE: 1/4" = 1'-0"



A4 ROOF FRAMING PLAN SCALE: 1/8" = 1'-0"