

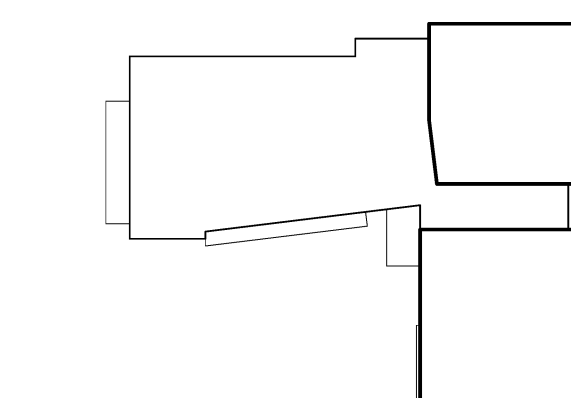
JEWISH COMMUNITY ALLIANCE OF SOUTHERN MAINE

PORTLAND, ME

Harriman Project No. 15309

Key Plan

Proj North

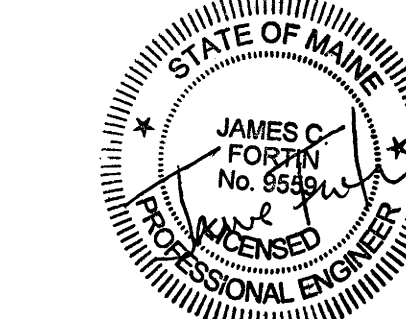


FOUNDATION PLAN NOTES:

1. TOP OF CONCRETE ELEVATION IS REFERENCED (+) FROM FINISH FLOOR ELEVATION 106.00' (+0'-0").
2. SEE ADDITIONAL APPLICABLE FOUNDATION NOTES ON DRAWING S50.1.
3. (-8") INDICATES TOP OF CONCRETE ELEVATION.
4. (-4'-0") INDICATES TOP OF FOOTING ELEVATION.
5. PIERS AND SPREAD FOOTINGS ARE CENTERED ON COLUMNS, UNLESS NOTED OTHERWISE.
6. SEE ARCHITECTURAL DRAWINGS FOR LOCATIONS AND DIMENSIONS OF ALL DEPRESSED SLABS. VERIFY DEPRESSED SLAB ELEVATION WITH ACTUAL FLOORING PRODUCT TO BE INSTALLED.
7. S51 INDICATES SPAN OF STRUCTURAL SLAB. SEE DETAIL A2/S50.1.
8. UNLESS NOTED OTHERWISE ON PLANS, ALL CONCRETE SLABS ON-GRADE SHALL BE 4" THICK WITH FIBER REINFORCING.
9. TOP OF PIER ELEVATION = (-8") UNLESS NOTED OTHERWISE.
10. SECTIONS AND DETAILS SHOWN ON STRUCTURAL DRAWINGS SHALL BE CONSIDERED TYPICAL FOR SIMILAR FRAMING CONDITIONS NOT SPECIFICALLY REFERENCED.

Issues and Revisions

Mark	Date	Description
-	09-04-15	DESIGN DEVELOPMENT REVIEW
-	10-01-15	ISSUED FOR SITE COORDINATION
-	03-25-16	CONSTRUCTION DOCUMENTS

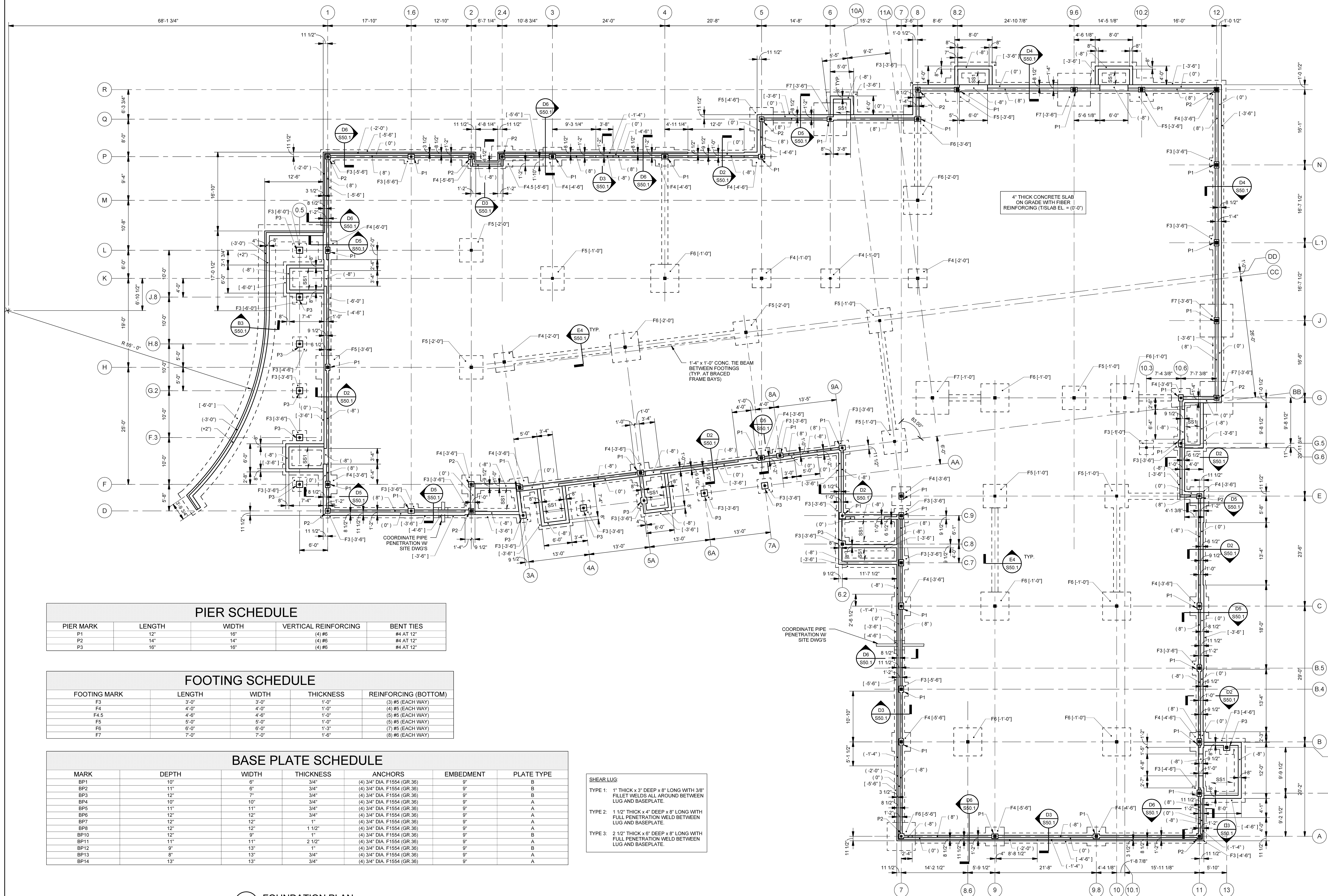


Drawing Scale: 0 4 8 12  
1/8" = 1'-0"

PA/PE: JCF © 2016  
Drawn By: ZPP Harriman Associates

FOUNDATION PLAN

S10.1



PIER SCHEDULE

PIER MARK	LENGTH	WIDTH	VERTICAL REINFORCING	BENT TIES
P1	12"	16"	(4) #6	#4 AT 12"
P2	14"	14"	(4) #6	#4 AT 12"
P3	16"	16"	(4) #6	#4 AT 12"

FOOTING SCHEDULE

FOOTING MARK	LENGTH	WIDTH	THICKNESS	REINFORCING (BOTTOM)
F3	3'-0"	3'-0"	1'-0"	(3) #5 (EACH WAY)
F4	4'-0"	4'-0"	1'-0"	(4) #5 (EACH WAY)
F4.5	4'-6"	4'-6"	1'-0"	(5) #5 (EACH WAY)
F5	5'-0"	5'-0"	1'-0"	(5) #5 (EACH WAY)
F6	6'-0"	6'-0"	1'-3"	(7) #5 (EACH WAY)
F7	7'-0"	7'-0"	1'-6"	(8) #6 (EACH WAY)

BASE PLATE SCHEDULE

MARK	DEPTH	WIDTH	THICKNESS	ANCHORS	EMBEDMENT	PLATE TYPE
BP1	10"	6"	3/4"	(4) 3/4" DIA F1554 (GR.36)	9"	B
BP2	11"	6"	3/4"	(4) 3/4" DIA F1554 (GR.36)	9"	B
BP3	12"	7"	3/4"	(4) 3/4" DIA F1554 (GR.36)	9"	B
BP4	10"	10"	3/4"	(4) 3/4" DIA F1554 (GR.36)	9"	A
BP5	11"	11"	3/4"	(4) 3/4" DIA F1554 (GR.36)	9"	A
BP6	12"	12"	3/4"	(4) 3/4" DIA F1554 (GR.36)	9"	A
BP7	12"	12"	1"	(4) 3/4" DIA F1554 (GR.36)	9"	A
BP8	12"	12"	1 1/2"	(4) 3/4" DIA F1554 (GR.36)	9"	A
BP9	12"	9"	1"	(4) 3/4" DIA F1554 (GR.36)	9"	B
BP11	11"	11"	2 1/2"	(4) 3/4" DIA F1554 (GR.36)	9"	A
BP12	9"	13"	1"	(4) 3/4" DIA F1554 (GR.36)	9"	B
BP13	8"	13"	3/4"	(4) 3/4" DIA F1554 (GR.36)	9"	A
BP14	13"	13"	3/4"	(4) 3/4" DIA F1554 (GR.36)	9"	A

SHEAR LUG:

- TYPE 1: 1" THICK x 3" DEEP x 8" LONG WITH 3/8" FILLET WELDS ALL AROUND BETWEEN LUG AND BASEPLATE.
- TYPE 2: 1 1/2" THICK x 4" DEEP x 8" LONG WITH FULL PENETRATION WELD BETWEEN LUG AND BASEPLATE.
- TYPE 3: 2 1/2" THICK x 6" DEEP x 8" LONG WITH FULL PENETRATION WELD BETWEEN LUG AND BASEPLATE.

A1 FOUNDATION PLAN

SCALE: 1/8" = 1'-0"