



HARRIMAN

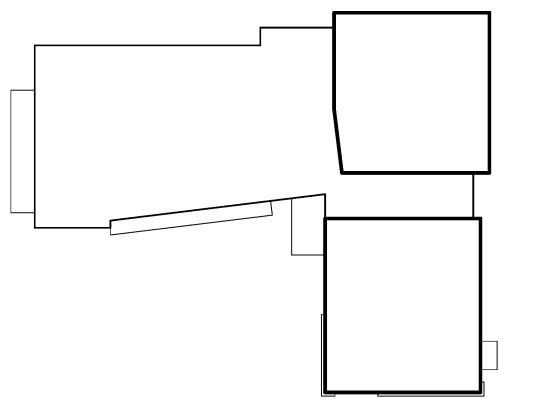
AUBURN PORTLAND MANCHESTER

JEWISH COMMUNITY ALLIANCE OF SOUTHERN MAINE

PORTLAND, ME

Harriman Project No. 15309

Key Plan



EXHAUST FAN INFORMATION

FAN UNIT NO.	TAG	FAN UNIT MODEL #	CFM	ESP	RPM	H.P.	B.H.P.	PH.	VOLT	FLA	WEIGHT (LBS.)	SONES
1	EF-1	DU50HFA	1100	0.750	1373	0.500	0.2910	1	230	3.2	106	13.4
2	EF-2	DU33HFA	800	0.675	1493	0.333	0.2250	1	208	2.6	100	11.6

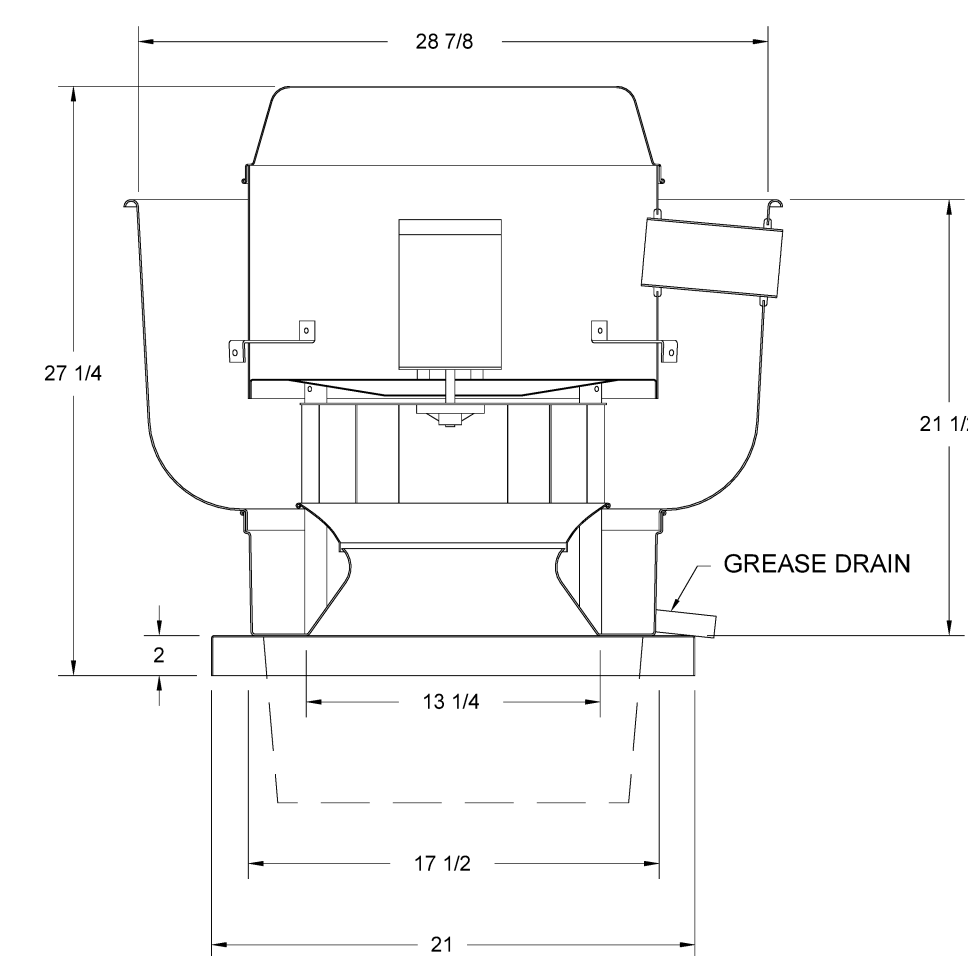
FAN OPTIONS

FAN UNIT NO.	TAG	OPTION (Qty. - Descr.)
1	EF-1	1 - Grease Box
		1 - Full Crating For Exhaust Fans
		1 - 3 Year Extended Motor Warranty
		1 - Fan Base Ceramic Seal - For Grease Ducts
2	EF-2	1 - ECM Wiring Package-Exhaust Fans - Manual Speed Control
		1 - Grease Box
		1 - Full Crating For Exhaust Fans
		1 - ECM Wiring Package-Exhaust Fans - Manual Speed Control
2	EF-2	1 - 3 Year Extended Motor Warranty
		1 - Fan Base Ceramic Seal - For Grease Ducts
		1 - Fan Base Ceramic Seal - For Grease Ducts

CURB ASSEMBLIES

NO.	FAN	WEIGHT	ITEM	SIZE
1	# 1	34 LBS	Curb	19.500"W x 19.500"L x 24.000"H Vented Hinged
2	# 2	34 LBS	Curb	19.500"W x 19.500"L x 24.000"H Vented Hinged

FAN #1 DU50HFA - EXHAUST FAN (EF-1)



FEATURES:

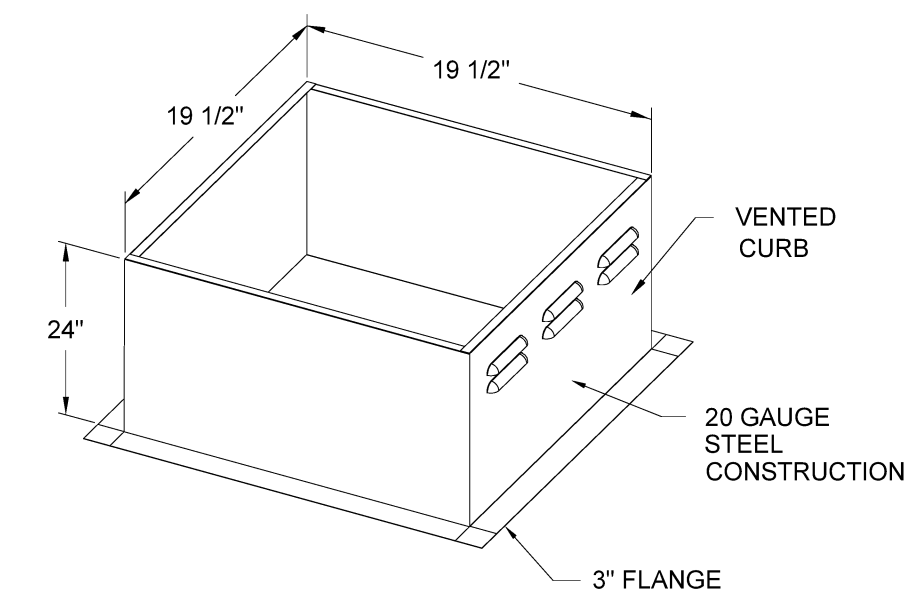
- ROOF MOUNTED FANS
- RESTAURANT MODEL
- UL705 AND UL762
- VARIABLE SPEED CONTROL
- INTERNAL WIRING
- WEATHERPROOF DISCONNECT
- THERMAL OVERLOAD PROTECTION (SINGLE PHASE)
- HIGH HEAT OPERATION 300°F (149°C)
- GREASE CLASSIFICATION TESTING

NORMAL TEMPERATURE TEST
EXHAUST FAN MUST OPERATE CONTINUOUSLY WHILE EXHAUSTING AIR AT 300°F (149°C) UNTIL ALL FAN PARTS HAVE REACHED THERMAL EQUILIBRIUM, AND WITHOUT ANY DETERIORATING EFFECTS TO THE FAN WHICH WOULD CAUSE UNSAFE OPERATION.

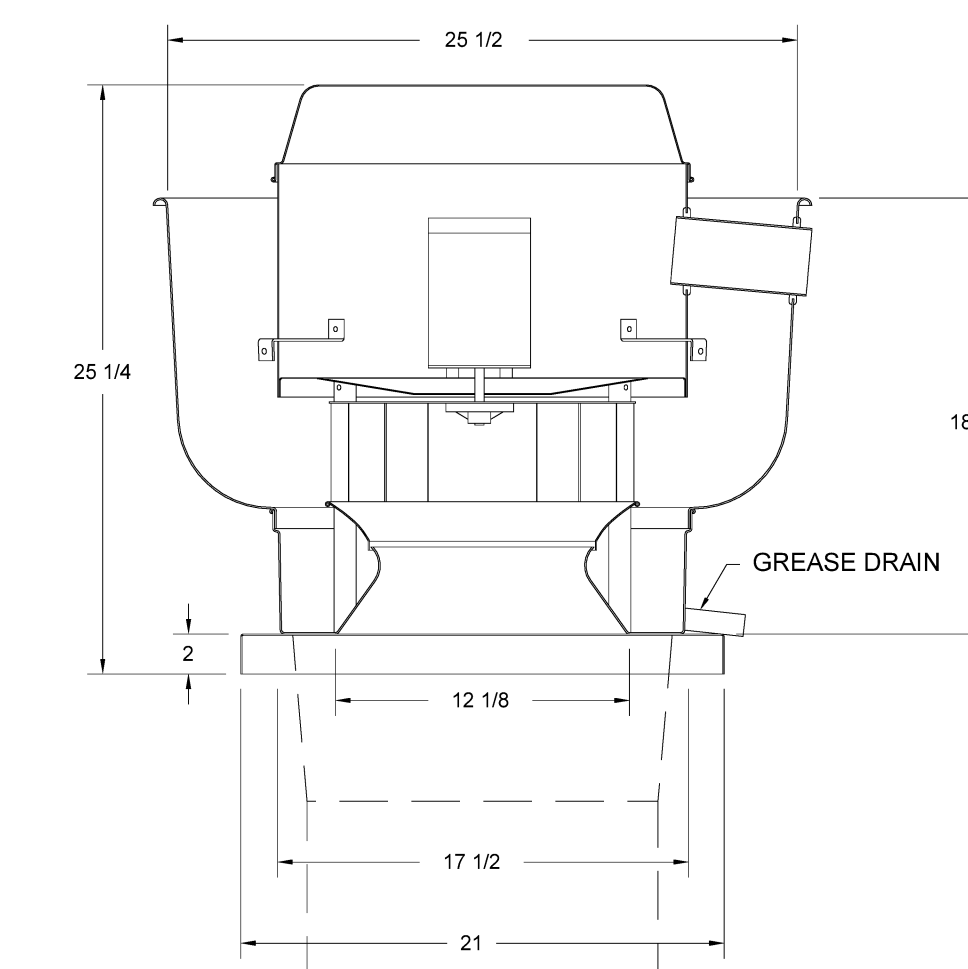
ABNORMAL FLARE-UP TEST
EXHAUST FAN MUST OPERATE CONTINUOUSLY WHILE EXHAUSTING BURNING GREASE VAPORS AT 600°F (316°C) FOR A PERIOD OF 15 MINUTES WITHOUT THE FAN BECOMING DAMAGED TO ANY EXTENT THAT COULD CAUSE AN UNSAFE CONDITION.

OPTIONS

- GREASE BOX
- FULL CRATING FOR EXHAUST FANS
- 3 YEAR EXTENDED MOTOR WARRANTY
- FAN BASE CERAMIC SEAL - FOR GREASE DUCTS
- ECM WIRING PACKAGE-EXHAUST FANS - MANUAL SPEED CONTROL



FAN #2 DU33HFA - EXHAUST FAN (EF-2)



FEATURES:

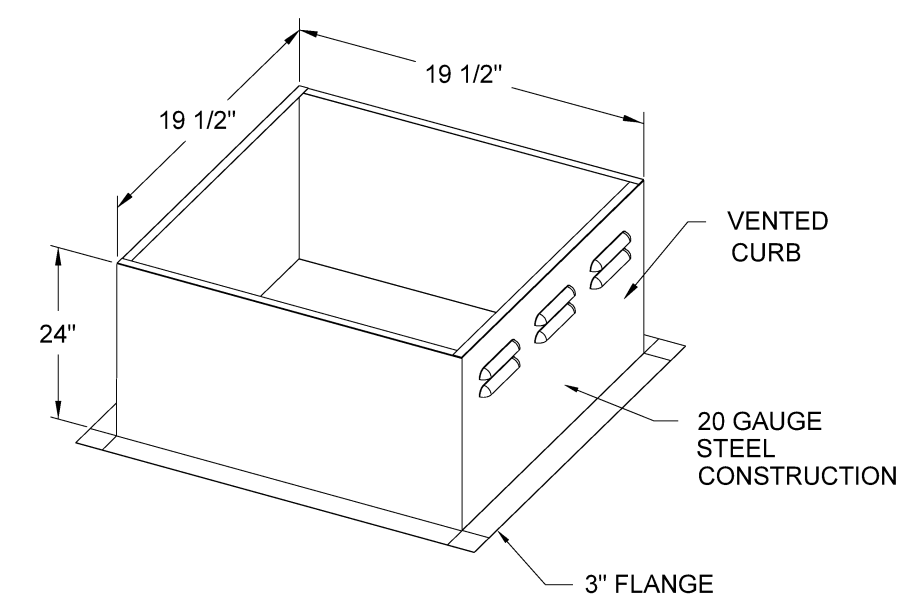
- ROOF MOUNTED FANS
- RESTAURANT MODEL
- UL705 AND UL762
- VARIABLE SPEED CONTROL
- INTERNAL WIRING
- WEATHERPROOF DISCONNECT
- THERMAL OVERLOAD PROTECTION (SINGLE PHASE)
- HIGH HEAT OPERATION 300°F (149°C)
- GREASE CLASSIFICATION TESTING

NORMAL TEMPERATURE TEST
EXHAUST FAN MUST OPERATE CONTINUOUSLY WHILE EXHAUSTING AIR AT 300°F (149°C) UNTIL ALL FAN PARTS HAVE REACHED THERMAL EQUILIBRIUM, AND WITHOUT ANY DETERIORATING EFFECTS TO THE FAN WHICH WOULD CAUSE UNSAFE OPERATION.

ABNORMAL FLARE-UP TEST
EXHAUST FAN MUST OPERATE CONTINUOUSLY WHILE EXHAUSTING BURNING GREASE VAPORS AT 600°F (316°C) FOR A PERIOD OF 15 MINUTES WITHOUT THE FAN BECOMING DAMAGED TO ANY EXTENT THAT COULD CAUSE AN UNSAFE CONDITION.

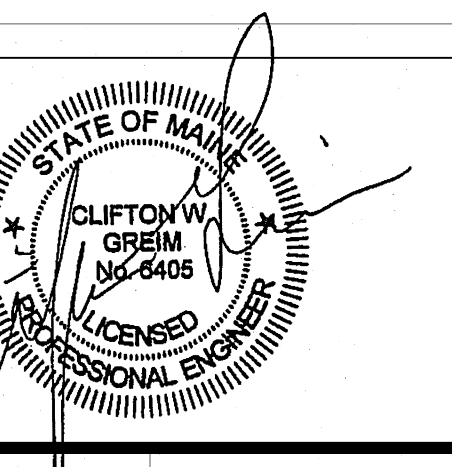
OPTIONS

- GREASE BOX
- FULL CRATING FOR EXHAUST FANS
- ECM WIRING PACKAGE-EXHAUST FANS - MANUAL SPEED CONTROL
- 3 YEAR EXTENDED MOTOR WARRANTY
- FAN BASE CERAMIC SEAL - FOR GREASE DUCTS



Issues and Revisions

Mark	Date	Description
03-25-16		CONSTRUCTION DOCUMENTS



Drawing Scales

NO.	SCALE
1	NO SCALE

PA / PE: CG © 2016 Harriman Associates
Drawn By: MDHS

DETAILS

M30.7