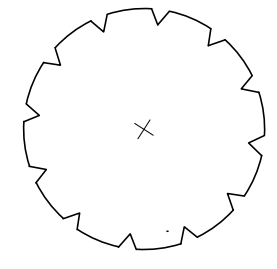
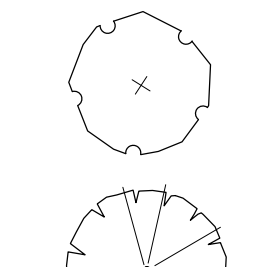
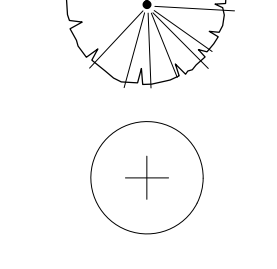
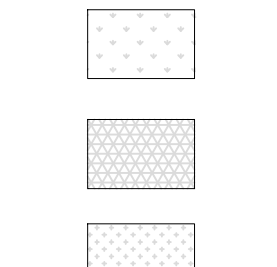



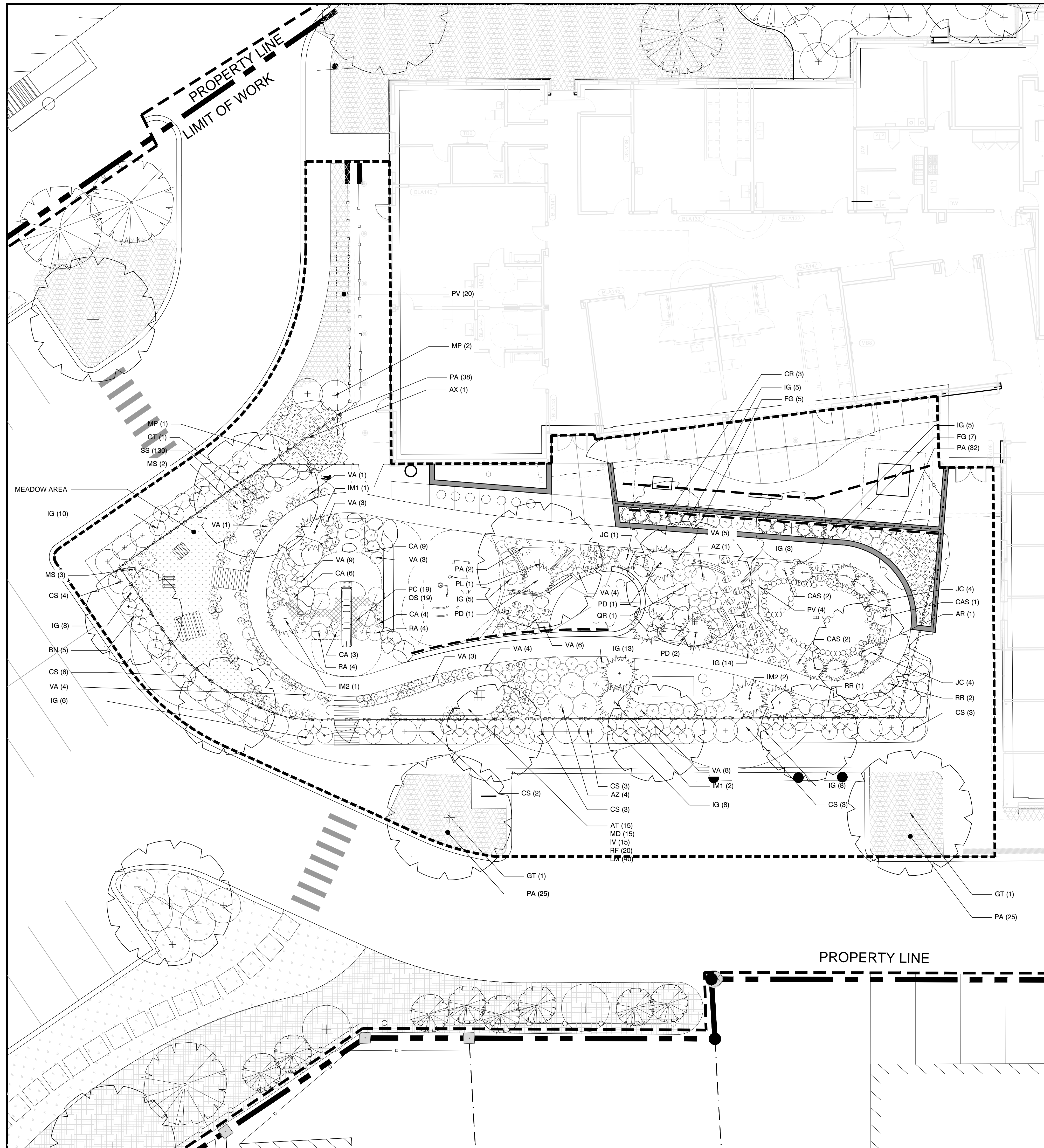


LEGEND

-  CANOPY TREE
-  ORNAMENTAL TREE
-  EVERGREEN TREE
-  SHRUB
-  TURF
-  ORNAMENTAL GRASSES / GROUNDCOVER
-  RAIN GARDEN PLANTING AREA

NOTES:

1. FOR PLAYGROUND MATERIAL, REFER SHEET L-2.1
2. FOR PLAYGROUND LAYOUT, REFER SHEET L-2.2

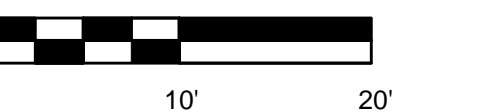


Playground Plant List						
Symbol	Botanical Name	Common Name	Size	Container	Comments	
<b>Deciduous Trees</b>						
1	AR <i>Acer rubrum</i> 'Red Sunset'	Red Maple	3.5" Caliper	B&B		
1	AX <i>Amelanchier x Grandiflora</i> 'Autumn Brilliance'	Autumn Brilliance Serviceberry	7-8 HT.	B&B		
4	BN <i>Betula nigra</i> 'Heritage'	Heritage River Birch	3.5" Caliper	B&B	Single Stem	
3	CR <i>Cornus</i> 'Rutger' Stellar Pink	Dogwood Hybrid	6-7 HT.	B&B		
3	GT <i>Gleditsia triacanthos inermis</i> 'Shademaster'	Honeylocust	3.5" Caliper	B&B		
1	PL <i>Platanus x Acerifolia</i>	London Planetree	2.5" - 3.5" Caliper	B&B		
1	QR <i>Quercus Rubra</i>	Red Oak	3.5" Caliper	B&B		
<b>Shrubs</b>						
5	AZ <i>Azalea</i> 'Cornell Pink'	Cornell Pink Manchurian Azalea	1 1/2 - 2 HT.	CONT.		
5	CAS <i>Clethra Alnifolia</i> 'Sixteen Candles'	Summersweet	1'-2 HT.	CONT.		
25	CS <i>Cornus Stolonifera</i> 'Bailey'	Red-Twigged Dogwood	2 1/2 - 3 HT.	CONT.		
12	FG <i>Fotherfillia Gardeii</i>	Dwarf Fotherfillia	2' -3 HT.	CONT.		
87	IG <i>Ilex glabra</i> 'Chamzini' Nordic	Nordic Inkberry	18" - 24" HT	CONT.		
3	IM1 <i>Ilex x meservae</i> 'Blue Princess'	Blue Princess Holly	2' -3 HT.	CONT.		
3	IM2 <i>Ilex x meservae</i> 'Blue Prince'	Blue Prince Holly	2' -3 HT.	CONT.		
9	JC <i>Juniperus chinensis</i> 'Old Gold'	Chinese Juniper	2' -3 HT.	CONT.		
3	MP <i>Myrica pensylvanica</i>	Northern Bayberry	2 1/2 -3 HT	CONT.		
4	PD <i>Pinus Densiflora</i> 'Globosa'	Pine, Globe Japanese Red	2-3 HT.	CONT.		
8	RA <i>Rhus aromatica</i> 'Gro-Low'	Fragrant Sumac	18" -24" HT.	CONT.		
3	RR <i>Rosa Rogosa</i> 'Alba'	White Beach Rose	1 QT	CONT.		
51	VA <i>Vaccinium angustifolium</i>	Lowbush Blueberry	18" -24" HT.	CONT.	Underdrained Soil Filter	
<b>Perennials, Ornamental Grasses and Groundcovers</b>						
15	AT <i>Asclepias tuberosa</i> L.	Butterfly Milkweed	1 QT	CONT.		
22	CA <i>Calamagrostis x Acutiflora</i>	Feather Reed Grass	3-5 HT	CONT.		
15	IV <i>Iris Vericolor</i>	Blue Flag Iris	PLUG	CONT.		
40	LM <i>Liriope Muscari</i> 'Big Blue'	Big Blue Liriope	PLUG	CONT.		
15	MD <i>Monarda didyma</i>	Bee Balm	PLUG	CONT.		
5	MS <i>Miscanthus Sinensis</i> 'Gold Bar'	Maiden Grass 'Gold Bar'	1 QT	CONT.		
19	OS <i>Onoclea sensibilis</i>	Sensitive Fern	PLUG	CONT.		
122	PA <i>Pennisetum alopecuroides</i> 'Hameln'	Dwarf Fountain Grass	1 QT	CONT.		
19	PC <i>Polygonatum Commutatum</i>	Great Solomans Seal	1 QT	CONT.		
24	PV <i>Panicum virgatum</i> 'Dallas Blues'	Dallas Blues Switch Grass	1 QT	CONT.		
29	RF <i>Rudbeckia Fulgida</i> 'Goldstem'	Goldstern Black-Eyed Susan	1 QT	CONT.		
130	SS <i>Schizachyrium scoparium</i>	Little Bluestem	PLUG	CONT.		
<b>Seed Mix</b>						
500 SF	TM	Turf Mix (Kentucky Bluegrass and Fescue Mix)			Turf Areas	

Jewish  
Community  
Alliance of  
Southern Maine

Proposed  
Neighborhood  
Center

Portland, Maine



03-25-16 ISSUED FOR BID

PROJECT NO: J-0096

FILE:

DRAWN BY: ARW

CHECKED: JF

APPROVED BY:

LANDSCAPE  
ENLARGEMENT

SCALE: 1" = 10'- 0"