

**HARRIMAN**

AUBURN PORTLAND MANCHESTER

**JEWISH COMMUNITY ALLIANCE OF SOUTHERN MAINE**

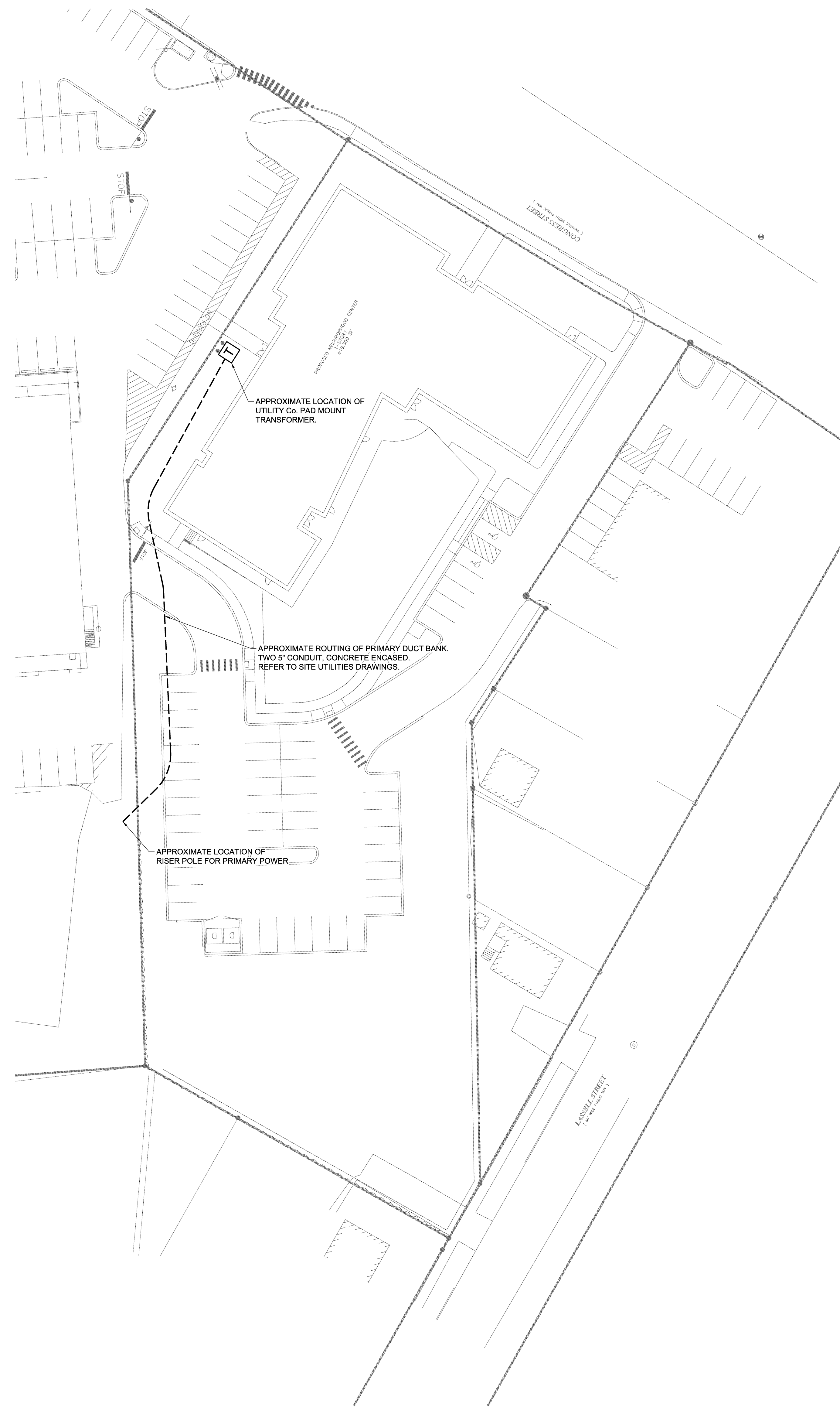
PORTLAND, ME

Harriman Project No. 15309

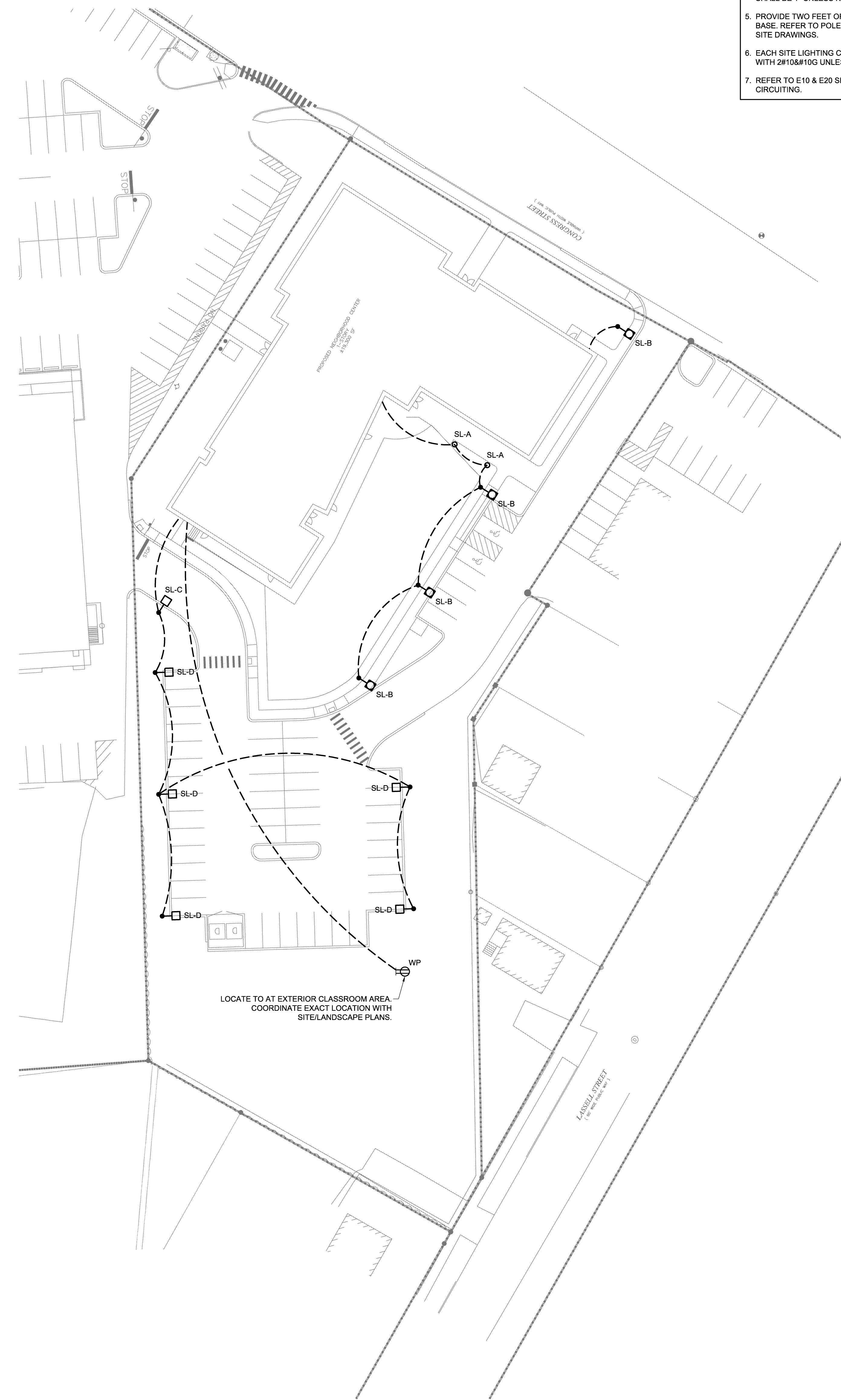
Key Plan Prog North



- NOTES:**
1. TRENCHING PROVIDED UNDER DIVISIONS 31, 32 AND 33 SITE.
  2. CONDUITS AND WIRING PROVIDED UNDER DIVISION 26.
  3. REFER TO AND COORDINATE WITH SITE UTILITIES DRAWING.
  4. ALL CONDUITS FEEDING SITE LIGHTING SHALL BE 1" UNLESS NOTED OTHERWISE.
  5. PROVIDE TWO FEET OF RGS FROM POLE BASE. REFER TO POLE BASE DETAIL ON SITE DRAWINGS.
  6. EACH SITE LIGHTING CIRCUIT SHALL BE FED WITH 2#10&#10G UNLESS NOTED OTHERWISE.
  7. REFER TO E10 & E20 SERIES DRAWINGS FOR CIRCUITING.



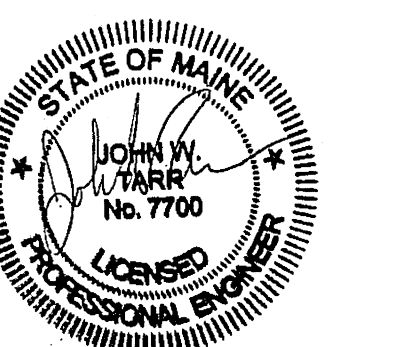
**1 ELECTRICAL SITE UTILITIES**  
SCALE: 1" = 30'  
0 15' 30' 45'



**3 ELECTRICAL SITE LIGHTING**  
SCALE: 1" = 30'  
0 15' 30' 45'

Issues and Revisions

Mark	Date	Description
-	03-25-16	CONSTRUCTION DOCUMENTS



Drawing Scales

PA / PE: JWT © 2016  
Drawn By: JMB Harriman Associates

SITE PLAN

**E80.1**