



HARRIMAN

AUBURN PORTLAND MANCHESTER

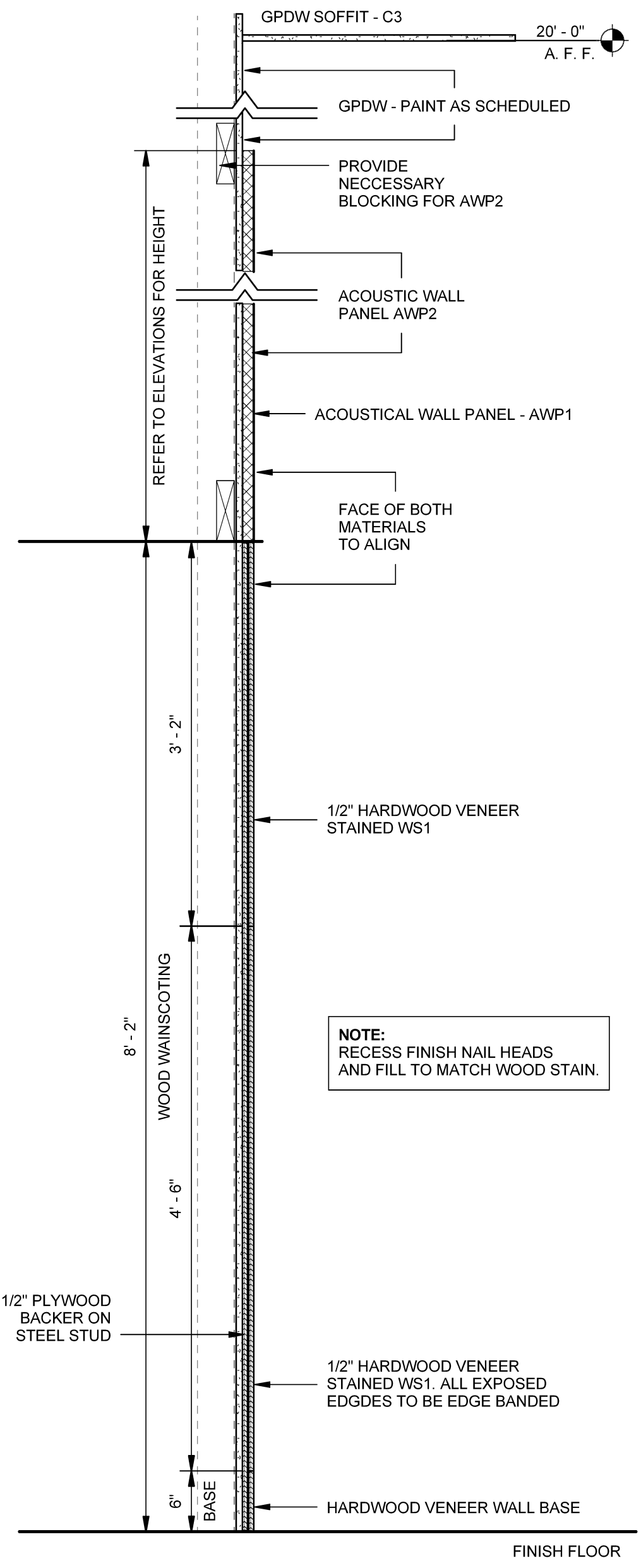
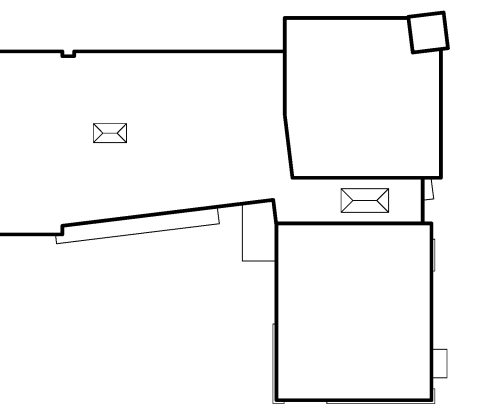
JEWISH COMMUNITY ALLIANCE OF SOUTHERN MAINE

PORTLAND, ME

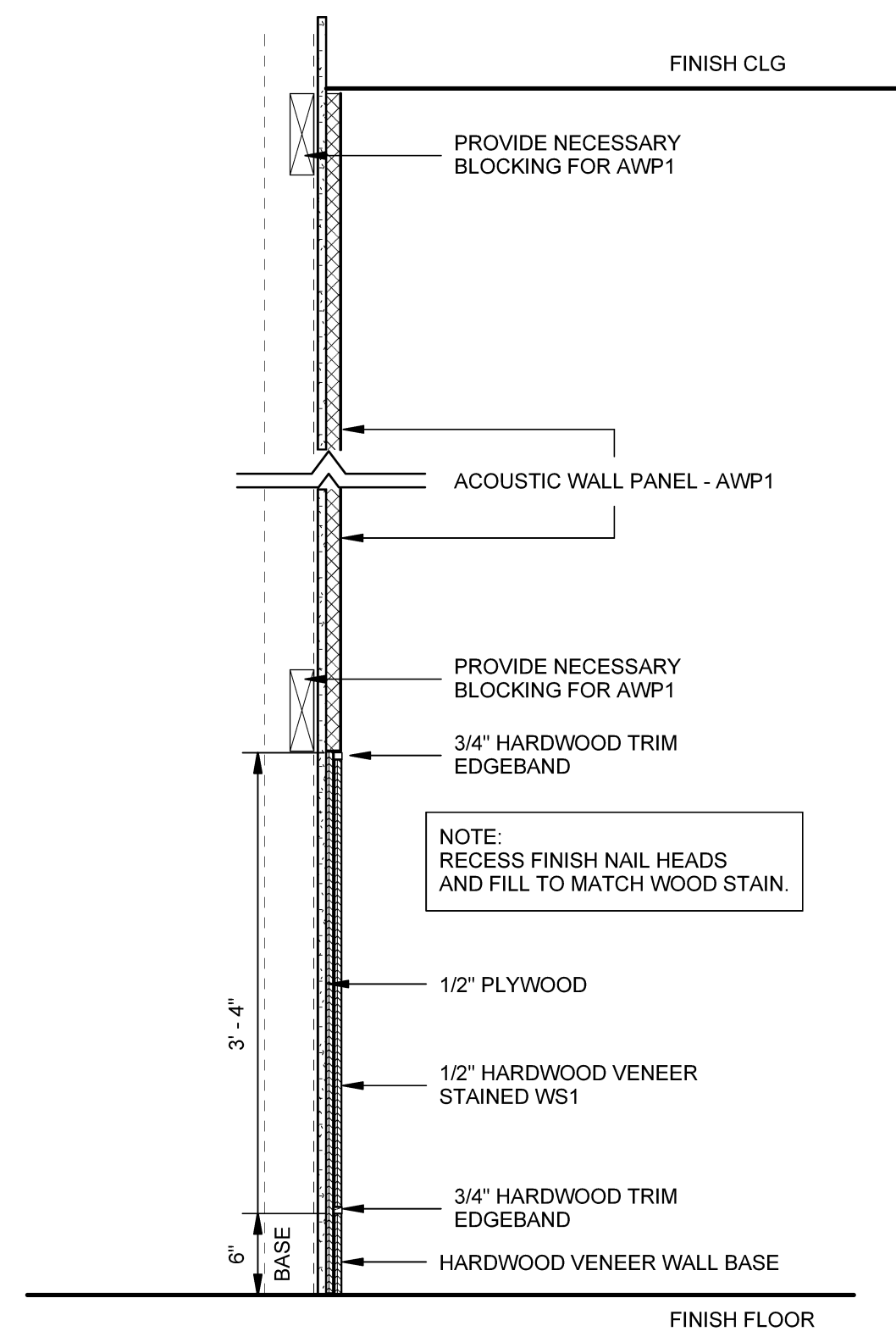
Harriman Project No. 15309

Key Plan

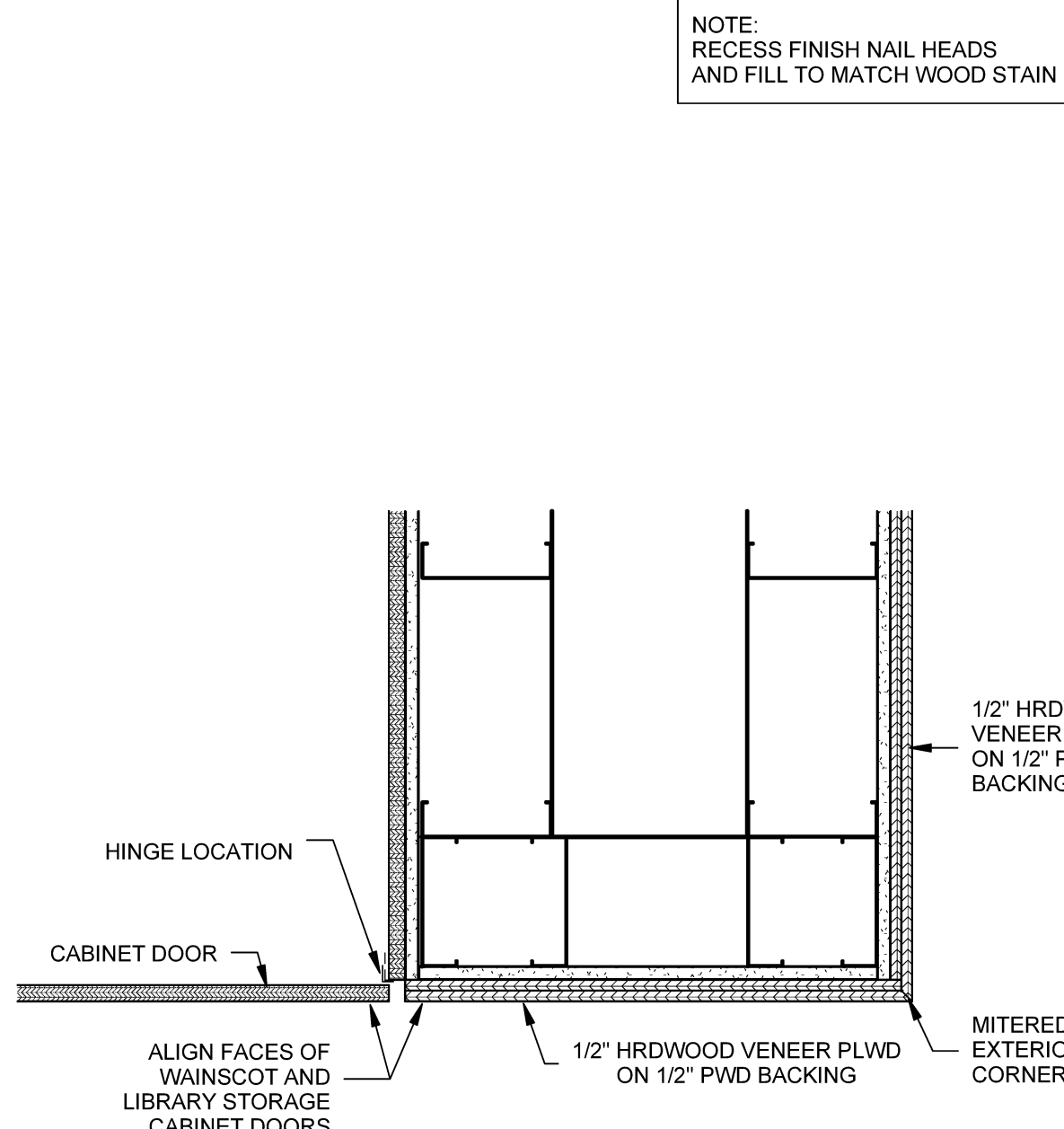
Proj North



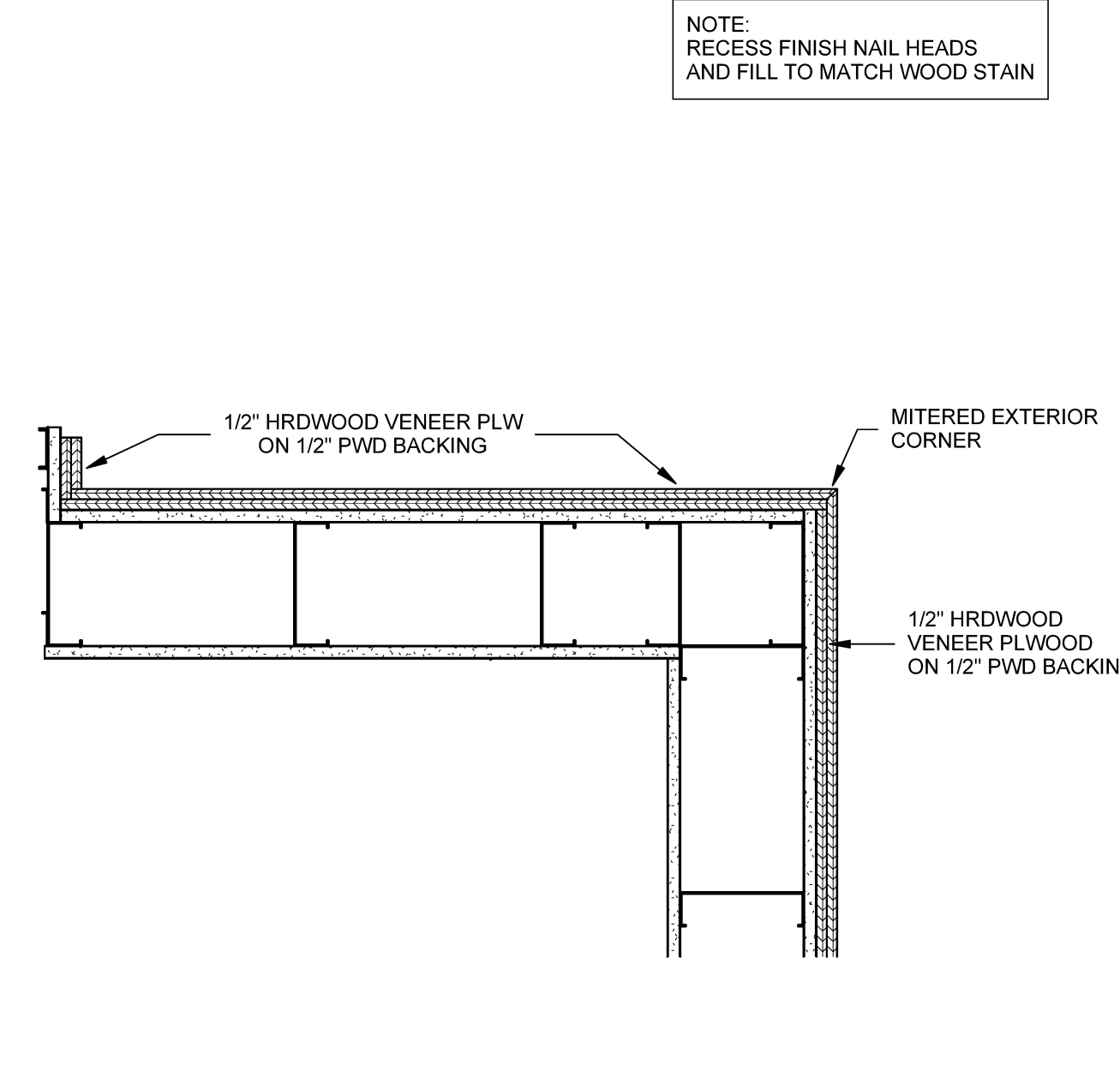
B1 WAINSCOT SECTION - ASSEMBLY HALL



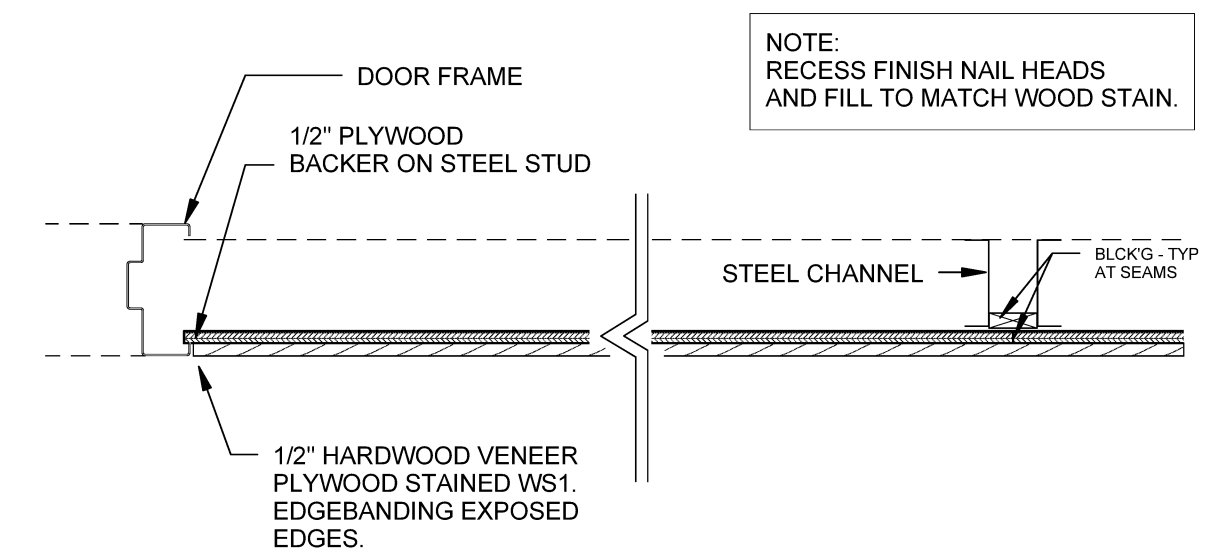
D2 WAINSCOT SECTION - LIBRARY



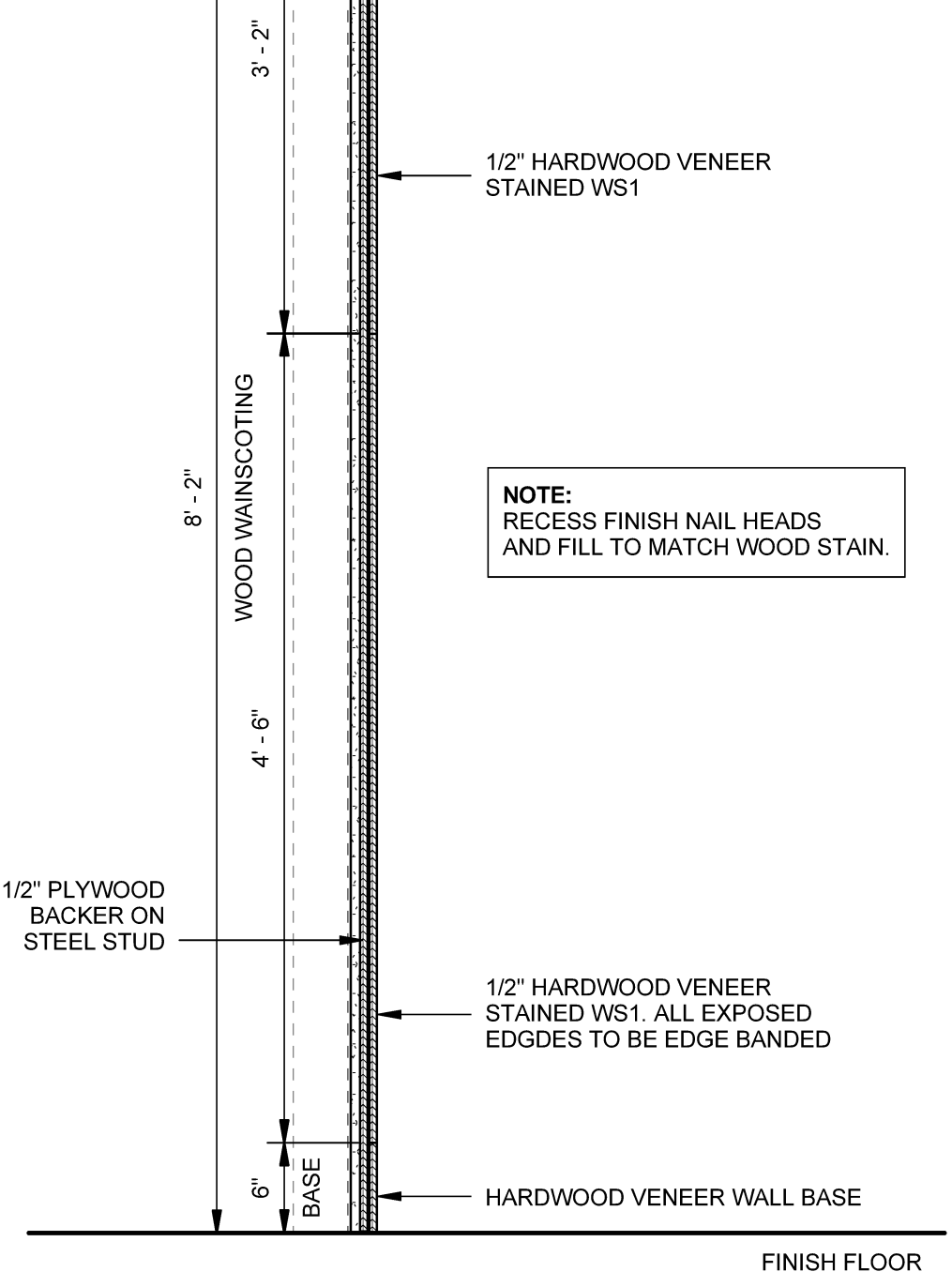
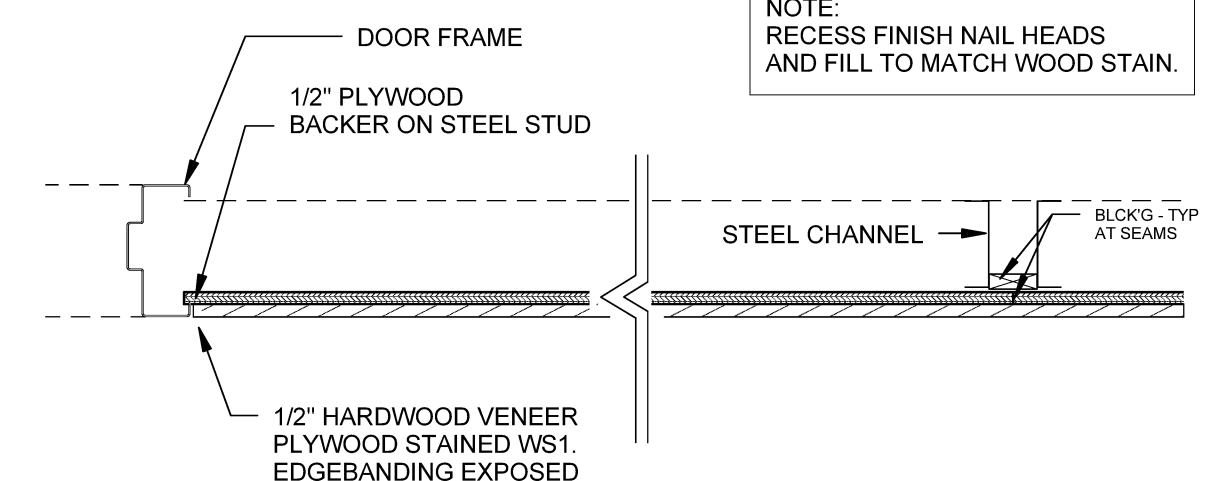
D3 WAINSCOT SECTION DETAIL



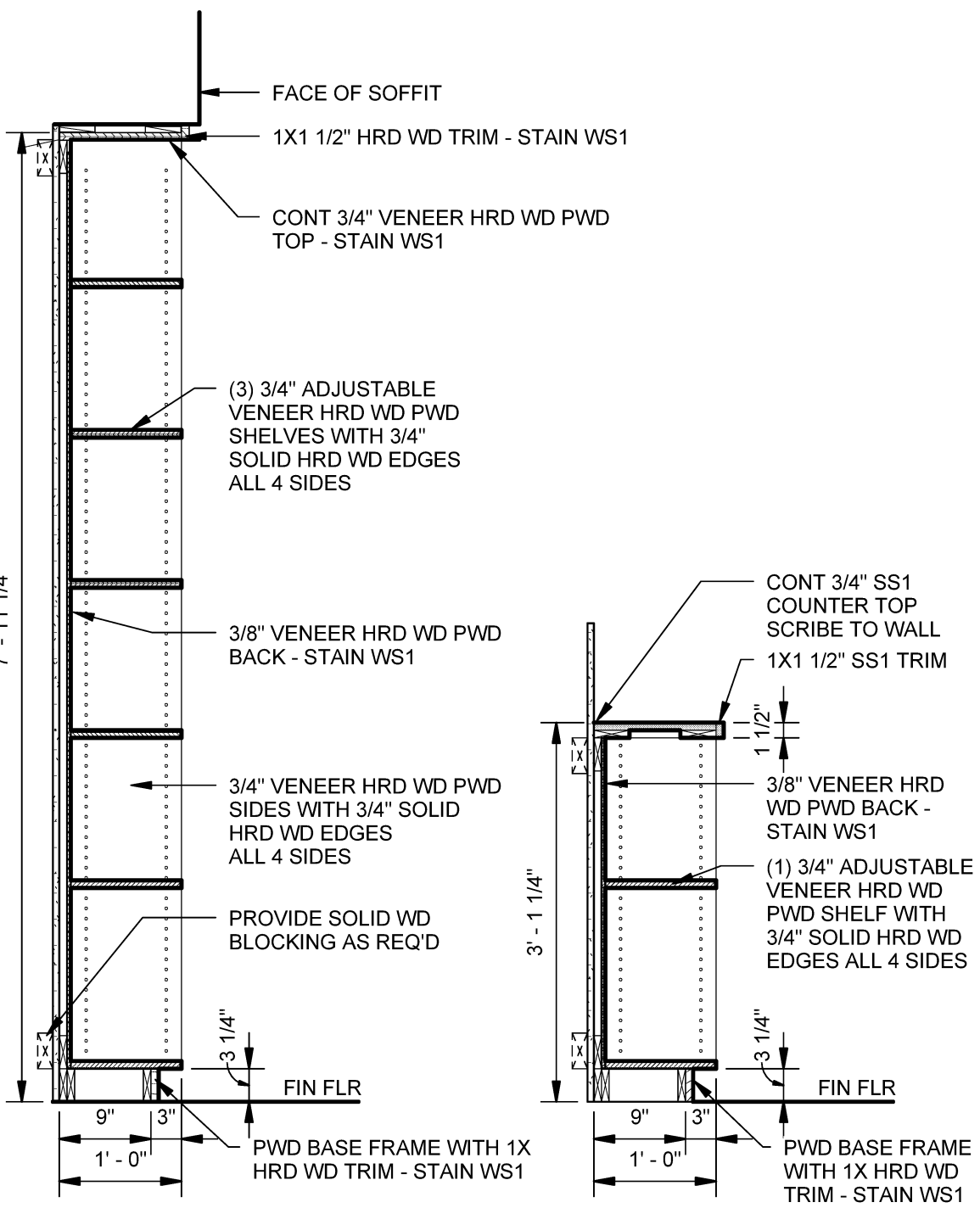
D4 WAINSCOT SECTION EXTERIOR CORNER



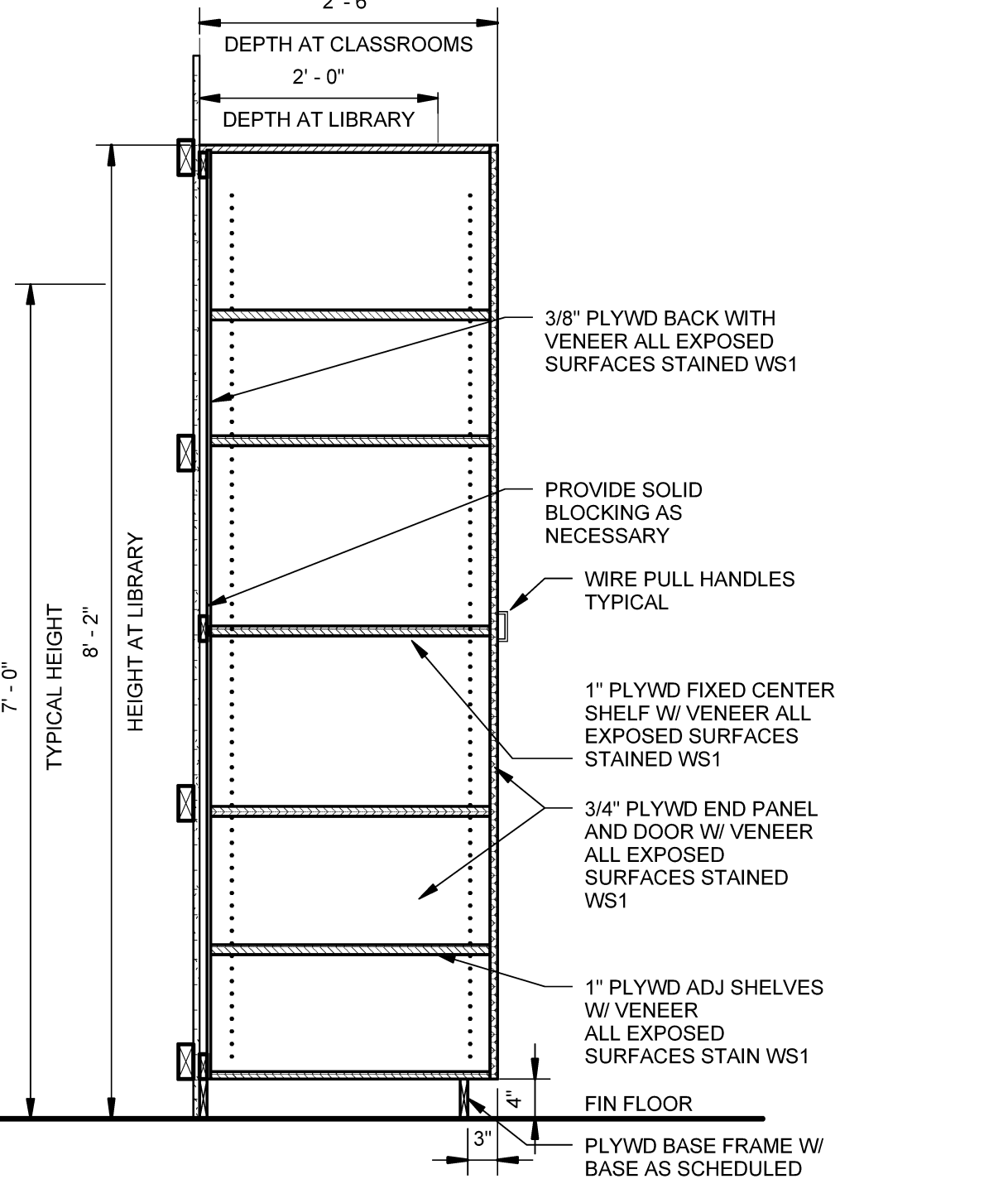
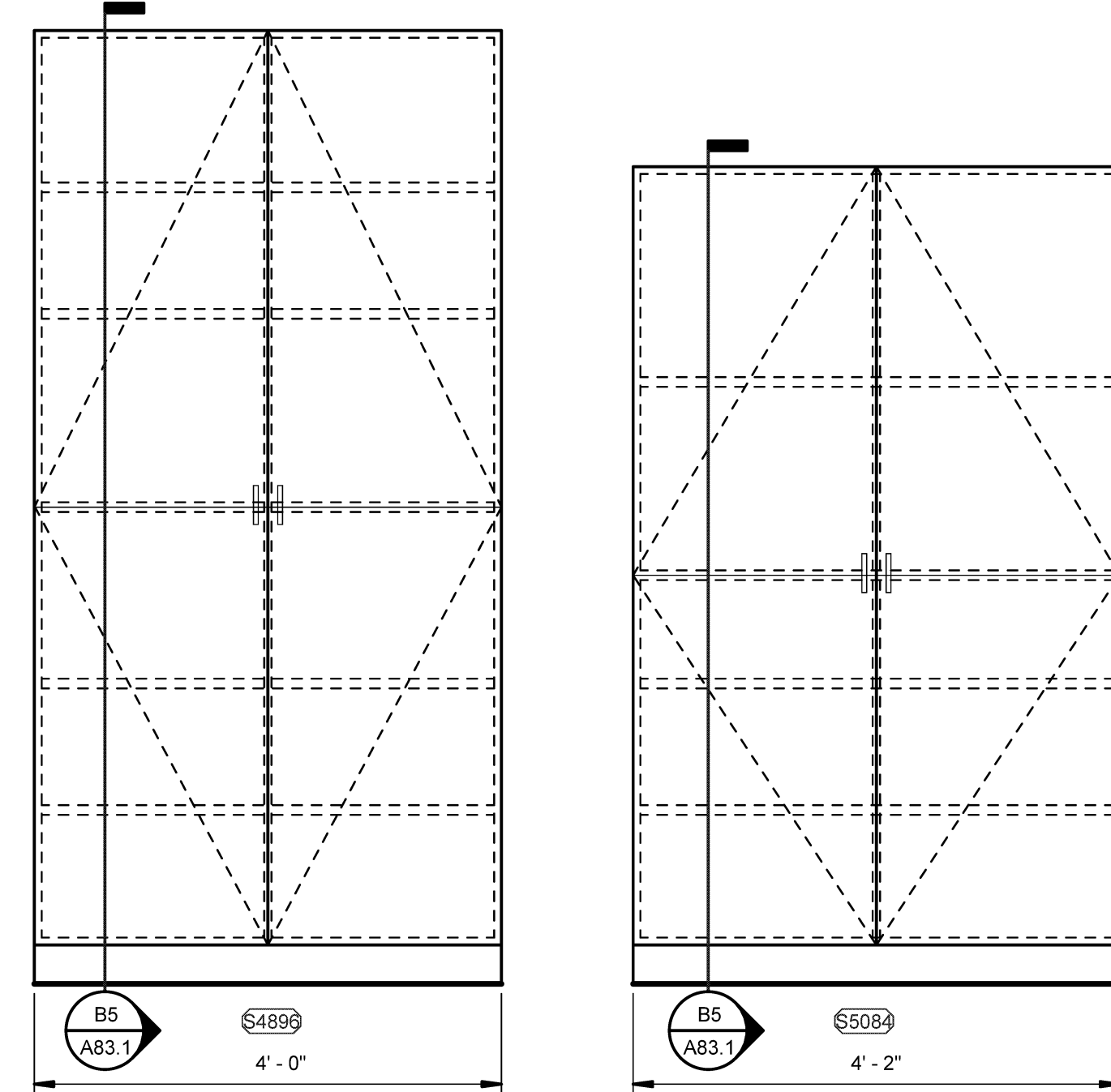
D5 WAINSCOT SECTION PLAN VIEW



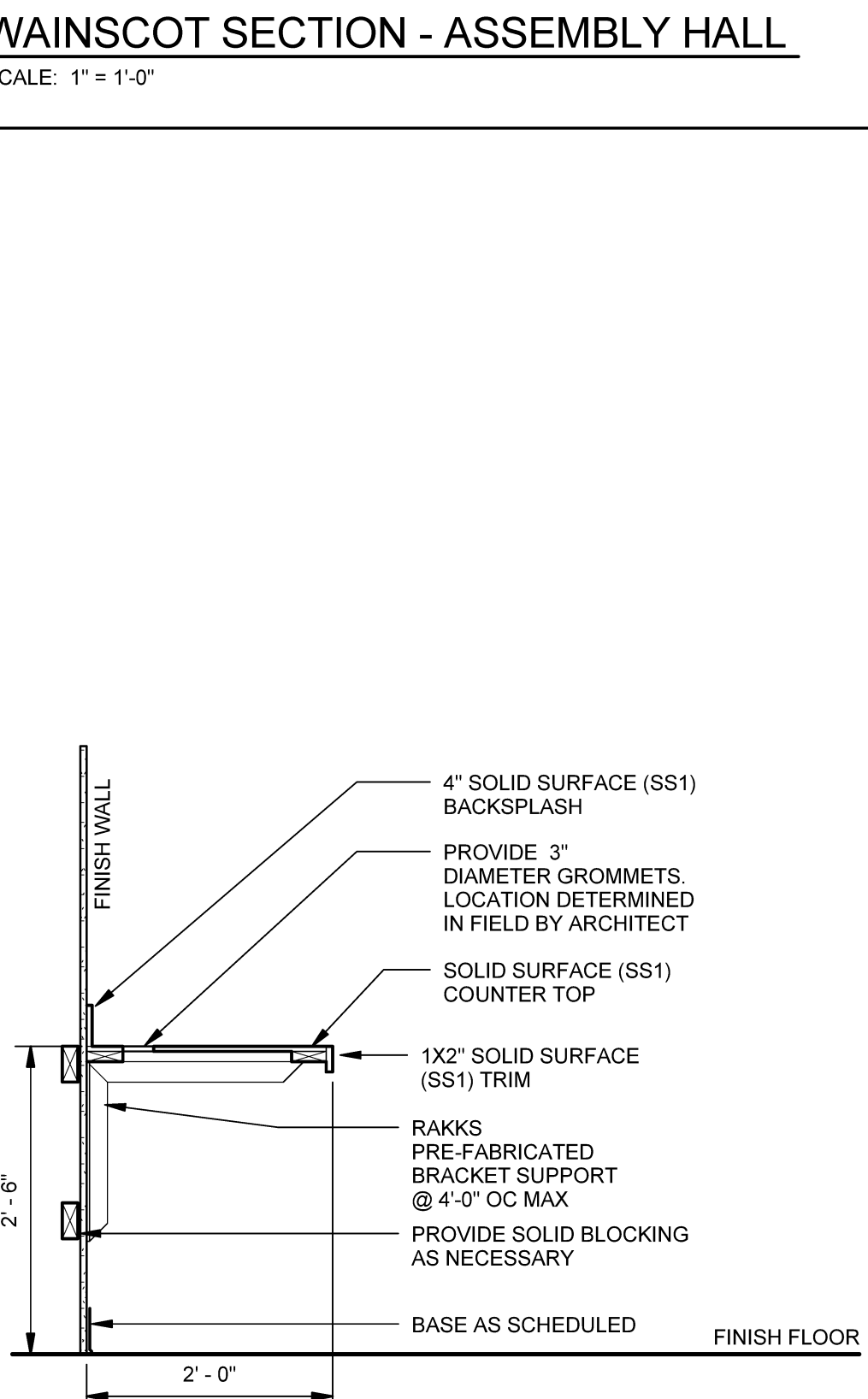
B2 LIBRARY BOOKSHELVES DETAIL



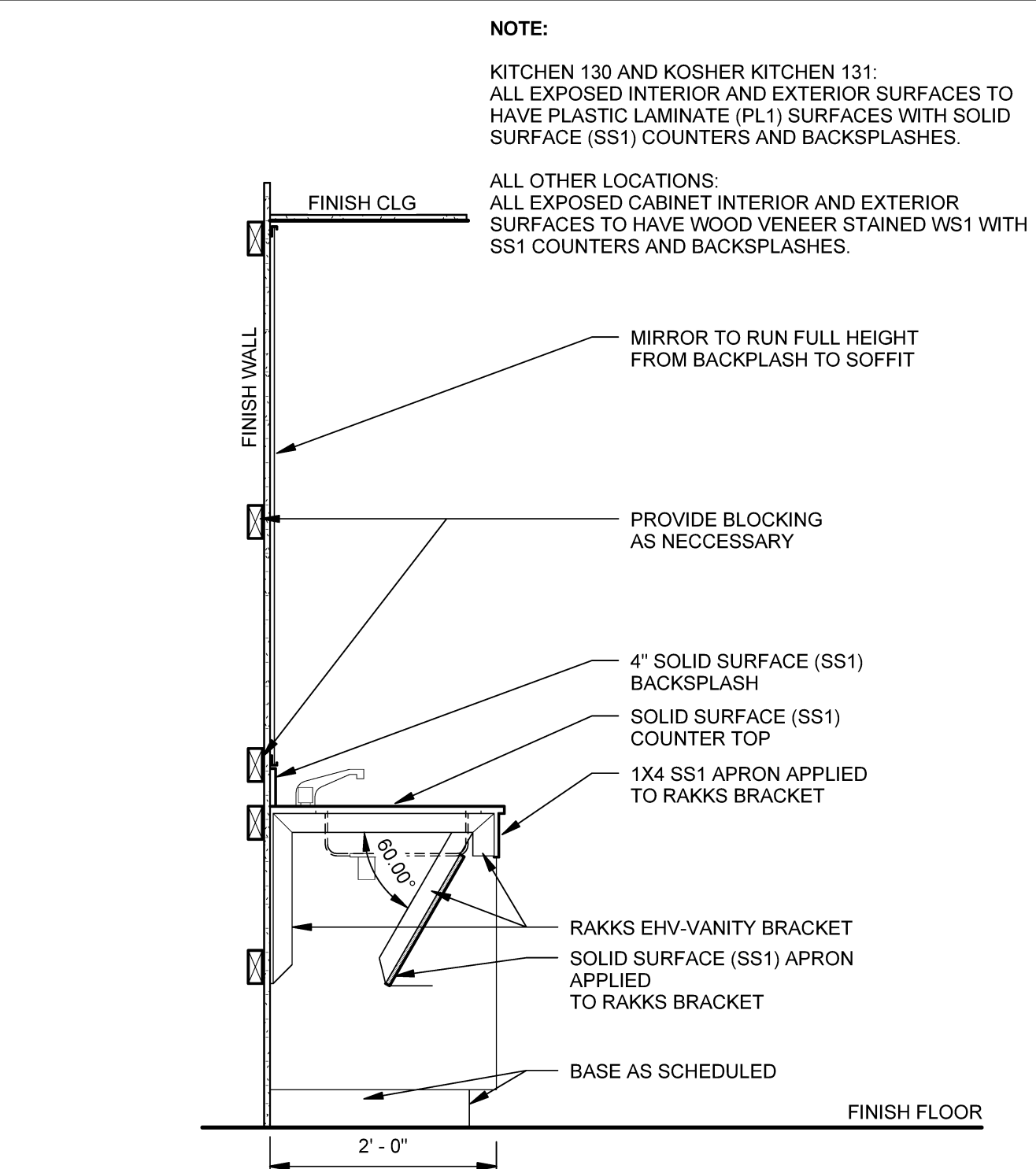
B3 STORAGE DETAILS



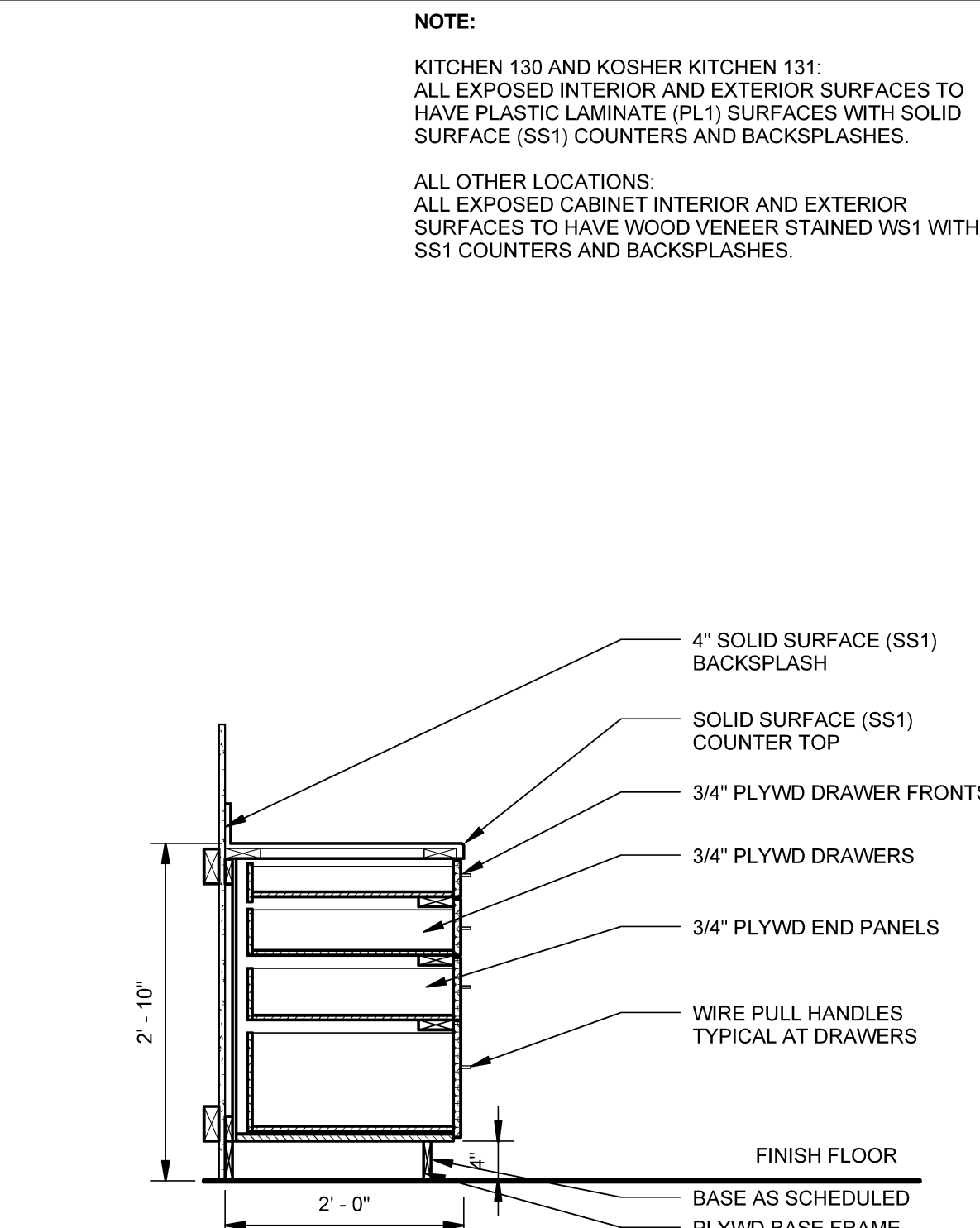
B5 STORAGE SECTION



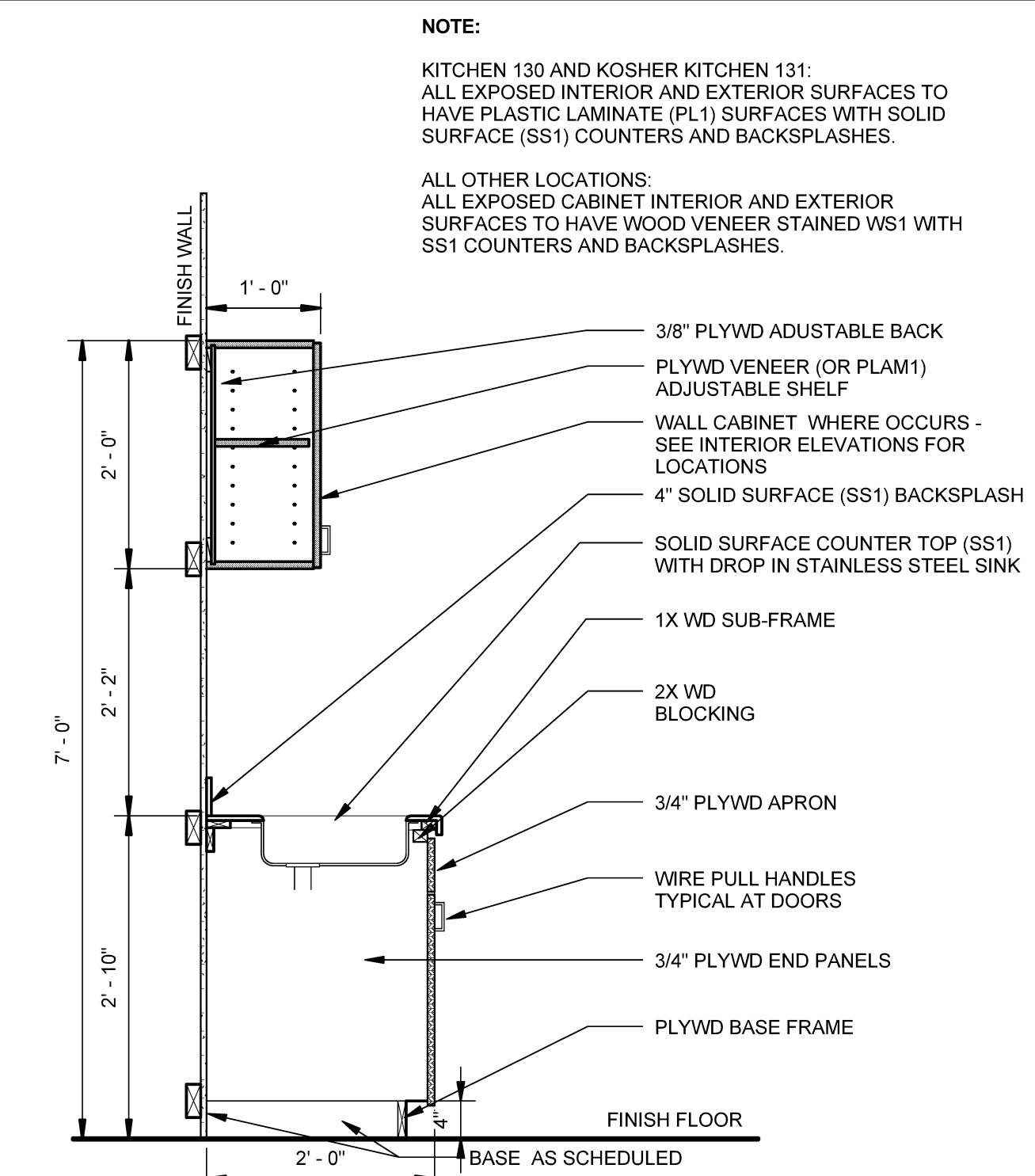
A1 SOLID SURFACE COUNTER SECTION



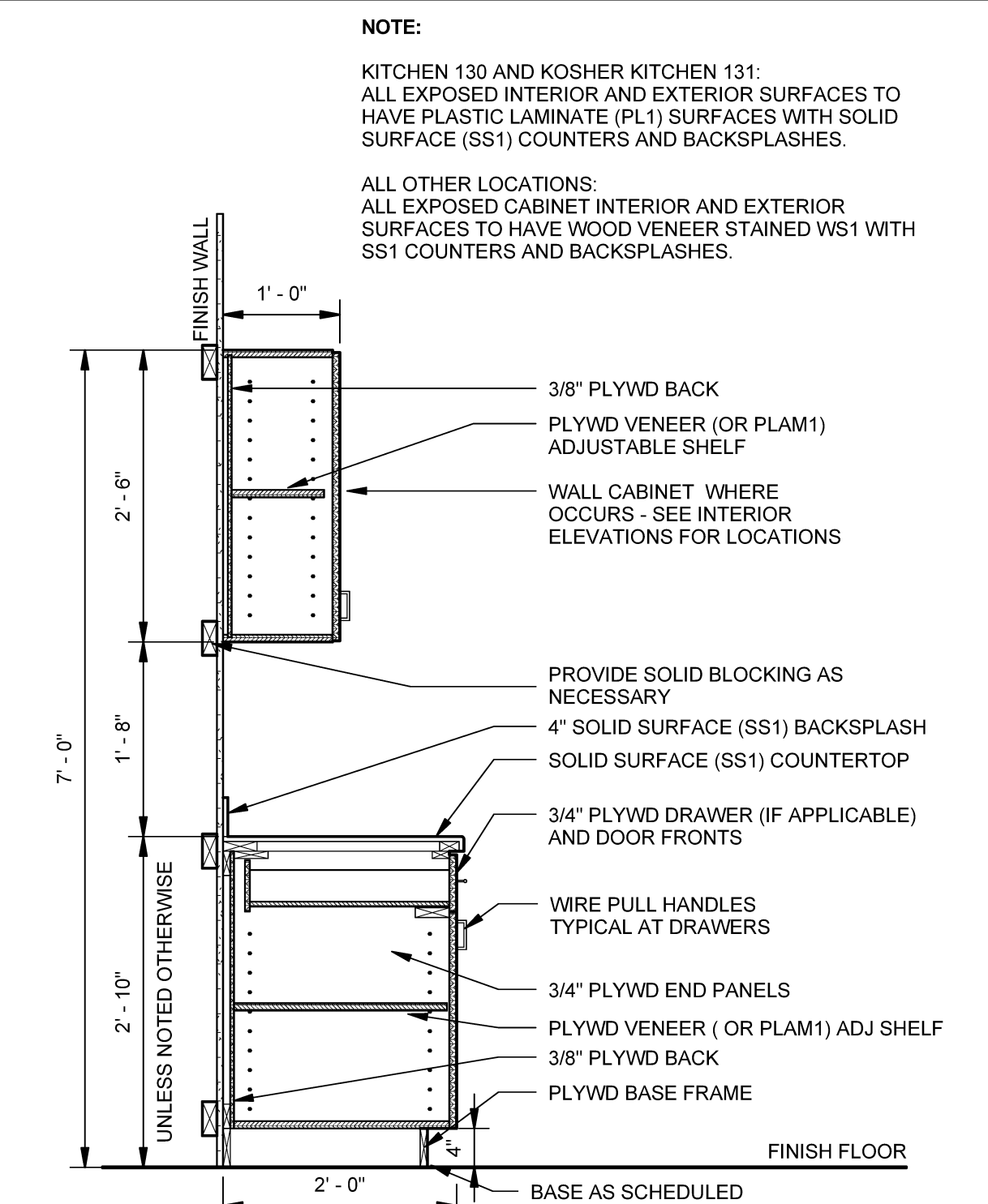
A2 ACCESSIBLE SINK BASE DETAIL



A3 DRAWER STORAGE DETAIL



A4 BASE/WALL CABINET W/SINK DETAIL

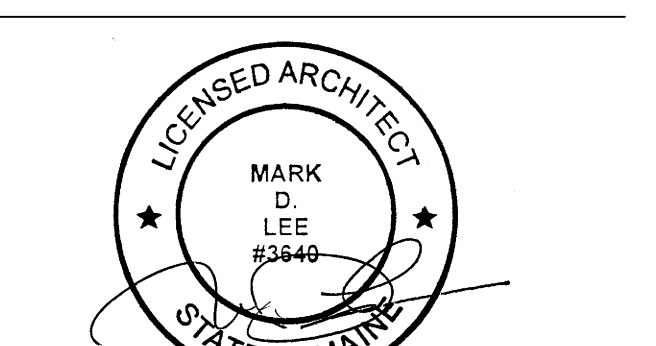


A5 BASE/WALL CABINET DETAIL

Issues and Revisions table with columns for Mark, Date, and Description.

03-25-16 CONSTRUCTION DOCUMENTS

Table with columns for Drawing, Scale, and Date.



Drawing Scale: As indicated

Table with columns for PA/PE, Designer, and Author.

© 2016 Harriman Associates

MILLWORK DETAILS

A83.1

Plot Date: 3/29/2016 1:25:52 PM