



HARRIMAN

AUBURN PORTLAND MANCHESTER

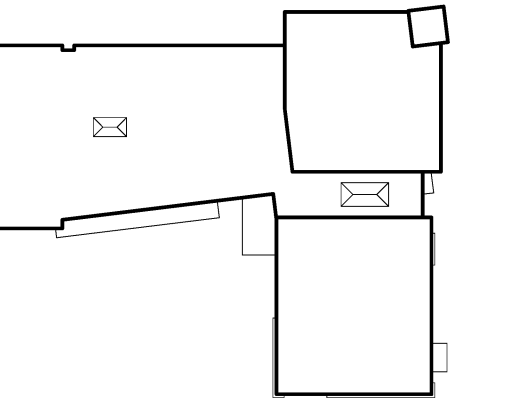
JEWISH COMMUNITY ALLIANCE OF SOUTHERN MAINE

PORTLAND, ME

Harriman Project No. 15309

Key Plan

Proj North



GENERAL NOTES

- 1. ALL HOLLOW METAL DOORS AND FRAMES TO BE PAINTED P7.
2. WOOD DOORS AND WOOD WAINSCOTING TO BE STAINED WS1.
3. RESILIENT WALL BASE (RWB1) TO BE USED IN ALL AREAS UNLESS OTHERWISE NOTED.
4. ANY EXPOSED DUCT WORK AND STRUCTURE THAT RECEIVES PAINT TO BE PAINTED P1 UNLESS OTHERWISE NOTED.
5. ALL GPDW SOFFITS TO BE PAINTED P1 UNLESS OTHERWISE NOTED.
6. PROVIDE TRANSITION STRIPS AT DISSIMILAR FLOOR MATERIALS. LOCATE TRANSITIONS AT CENTERLINE OF DOOR IN CLOSED POSITION UNLESS OTHERWISE NOTED.

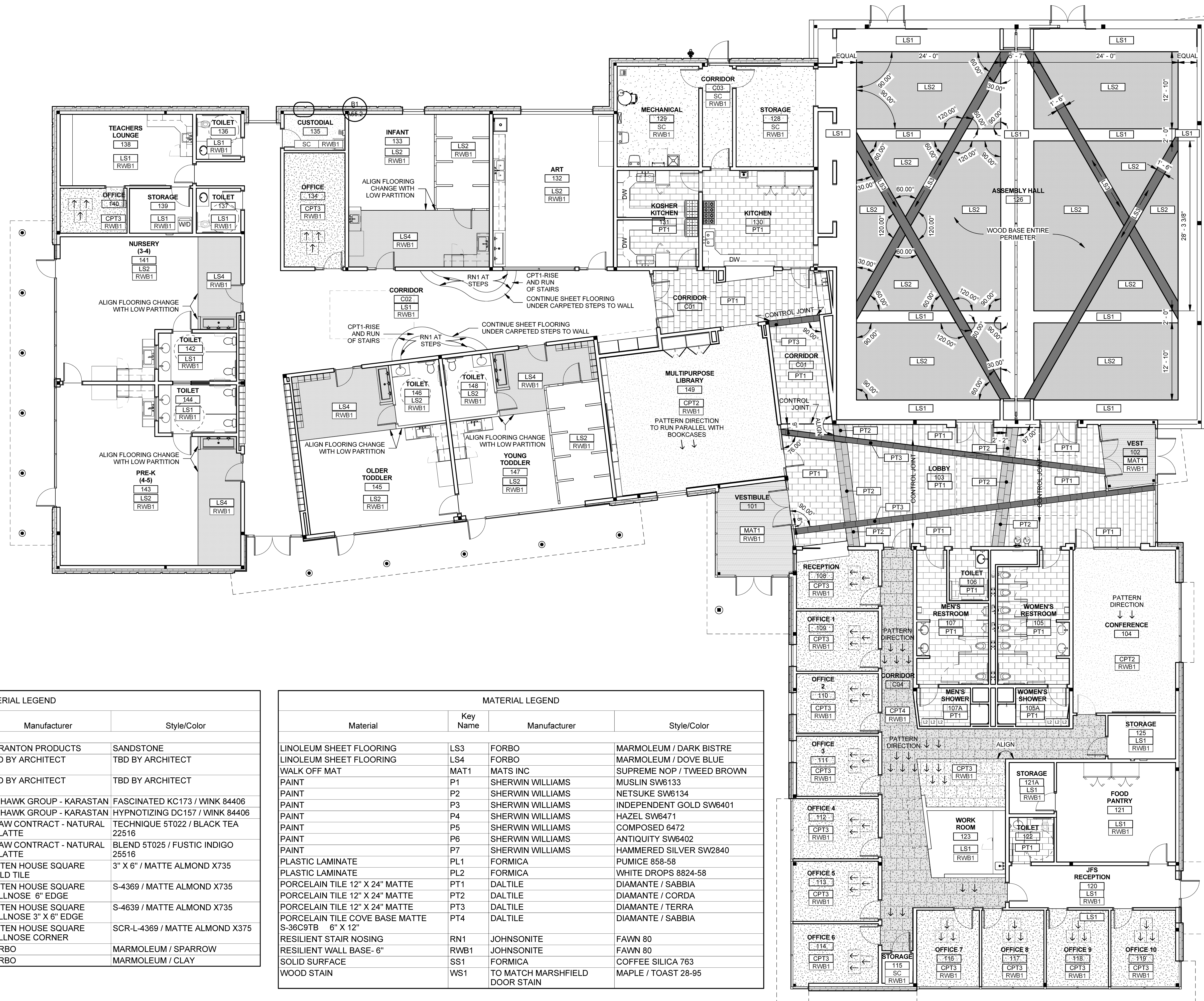
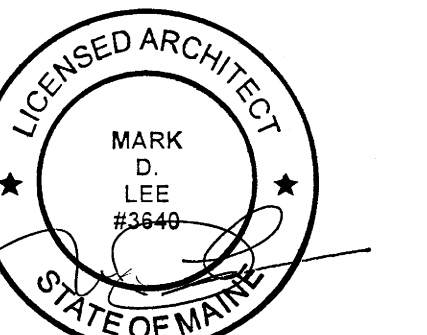


Table with 4 columns: Material, Key Name, Manufacturer, Style/Color. Lists materials like Phenolic Toilet Partitions, Acoustic Wall Panel Fabric, Carpet Broadloom, Ceramic Wall Tile, Linoleum Sheet Flooring, etc.

Table with 4 columns: Material, Key Name, Manufacturer, Style/Color. Lists materials like Linoleum Sheet Flooring, Walk Off Mat, Paint, Plastic Laminate, Porcelain Tile, Resilient Stair Nosing, etc.

Issues and Revisions table with columns: Mark, Date, Description. Shows revision history for the schematic review, design development review, and construction documents.



Drawing Scale: 1/8" = 1'-0"

PA/PE: MDL © 2016 Harriman Associates
Drawn By: JAE

MATERIALS PLAN

A71.1