

DOOR AND FRAME SCHEDULE

No.	DOOR PANELS				FRAME						FIRE RATING	REMARKS
	PANEL SIZE				TYPE	MAT	TYPE	DETAILS				
	PANELS	WIDTH	HEIGHT	THICK				HEAD	JAMB	SILL		
GROUND FLOOR												
101A	(2)	3'-0"	8'-0"	1 3/4"	SF2	HD AL	A1/A55.1	HD AL	A1/A55.1	A1/A55.1	-	-
101B	(2)	3'-0"	8'-0"	1 3/4"	SF2	HD AL	5	HD AL	B5/A80.2	A1/A10.1	-	20
102A	(2)	3'-0"	8'-0"	1 3/4"	SF2	HD AL	A1/A55.1	HD AL	A1/A55.1	A1/A10.1	-	-
102B	(2)	3'-0"	8'-0"	1 3/4"	SF2	HD AL	5	HD AL	B5/A80.2	A1/A10.1	-	-
104A	(1)	3'-0"	8'-0"	1 3/4"	R	WD	4	AL	D5/A82.2	SIM A6/A82.1	-	20
104B	(1)	3'-0"	7'-0"	1 3/4"	F	WD	1	HM	B6/A80.2	A6/A80.2	-	20
105	(1)	3'-0"	8'-0"	1 3/4"	F	WD	1	HM	B6/A80.2	A6/A80.2	-	20
105A	(1)	3'-0"	7'-0"	1 3/4"	F	WD	1	HM	B6/A80.2	A6/A80.2	-	20
106	(1)	3'-0"	8'-0"	1 3/4"	F	WD	1	HM	B6/A80.2	A6/A80.2	-	20
107	(1)	3'-0"	8'-0"	1 3/4"	F	WD	1	HM	B6/A80.2	A6/A80.2	-	20
107A	(1)	3'-0"	7'-0"	1 3/4"	F	WD	1	HM	B6/A80.2	A6/A80.2	-	-
108	(1)	3'-0"	7'-0"	1 3/4"	N	WD	1	HM	B6/A80.2	A6/A80.2	-	20
109	(1)	3'-0"	7'-0"	1 3/4"	N	WD	1	HM	B6/A80.2	A6/A80.2	-	20
110	(1)	3'-0"	7'-0"	1 3/4"	N	WD	1	HM	B6/A80.2	A6/A80.2	-	20
111	(1)	3'-0"	7'-0"	1 3/4"	N	WD	1	HM	B6/A80.2	A6/A80.2	-	20
112	(1)	3'-0"	7'-0"	1 3/4"	N	WD	1	HM	B6/A80.2	A6/A80.2	-	20
113	(1)	3'-0"	7'-0"	1 3/4"	N	WD	1	HM	B6/A80.2	A6/A80.2	-	20
114	(1)	3'-0"	7'-0"	1 3/4"	N	WD	1	HM	B6/A80.2	A6/A80.2	-	20
115	(1)	3'-0"	7'-0"	1 3/4"	F	WD	1	HM	B6/A80.2	A6/A80.2	-	20
116	(1)	3'-0"	7'-0"	1 3/4"	N	WD	1	HM	B6/A80.2	A6/A80.2	-	20
117	(1)	3'-0"	7'-0"	1 3/4"	N	WD	1	HM	B6/A80.2	A6/A80.2	-	20
118	(1)	3'-0"	7'-0"	1 3/4"	N	WD	1	HM	B6/A80.2	A6/A80.2	-	20
119	(1)	3'-0"	7'-0"	1 3/4"	N	WD	1	HM	B6/A80.2	A6/A80.2	-	20
120A	(1)	3'-0"	7'-0"	1 3/4"	SF2	HD AL	A1/A55.1	HD AL	A1/A55.1	A1/A55.1	-	-
120B	(1)	3'-0"	7'-0"	1 3/4"	F	WD	1	HM	B6/A80.2	A6/A80.2	-	20
121	(1)	3'-0"	7'-0"	1 3/4"	N	WD	1	HM	B6/A80.2	A6/A80.2	-	20
121A	(1)	3'-0"	7'-0"	1 3/4"	F	WD	1	HM	B6/A80.2	A6/A80.2	-	-
122	(1)	3'-0"	7'-0"	1 3/4"	F	WD	1	HM	B6/A80.2	A6/A80.2	-	20
125	(1)	3'-0"	7'-0"	1 3/4"	F	WD	1	HM	B6/A80.2	A6/A80.2	-	20
126A	(2)	3'-0"	8'-0"	1 3/4"	F	WD	1	AL	D5/A82.2	SIM B4/A82.1	-	20
126B	(2)	3'-0"	8'-0"	1 3/4"	F	WD	1	AL	D5/A82.2	B4/A82.1	-	20
126C	(2)	2'-10"	7'-10"	1 3/4"	F	HM	1	HM	B3/A80.2	A3/A80.2	-	-
126D	(2)	2'-10"	7'-10"	1 3/4"	F	HM	1	HM	B3/A80.2	A3/A80.2	-	-
126E	(1)	3'-0"	8'-2"	1 3/4"	F	WD	1	HM	D4/A82.2	C3/A82.1	-	-
127A	(2)	3'-0"	8'-2"	1 3/4"	F	WD	1	HM	D4/A82.2	C3/A82.1	-	-
127B	(2)	3'-0"	8'-2"	1 3/4"	F	WD	1	HM	D4/A82.2	C3/A82.1	-	-
128A	(2)	3'-0"	7'-0"	1 3/4"	F	WD	1	HM	D3/A82.2	SIM C4/A82.2	-	20
128B	(1)	3'-0"	7'-0"	1 3/4"	F	HM	1	HM	B6/A80.2	A6/A80.2	-	20
129	(1)	3'-0"	7'-0"	1 3/4"	F	HM	1	HM	B6/A80.2	A6/A80.2	-	20
130A	(1)	3'-0"	6'-8"	1 3/4"	R	WD	7	HM	B5/A80.2	A6/A80.2	-	20
130B	(1)	3'-0"	7'-0"	1 3/4"	F	WD	1	HM	D3/A82.2	C4/A82.1	-	20
130C	(1)	8'-0"	7'-0"	-	CS	WD	-	-	B3/A82.2	A4/A11.1	B3/A82.2	20
131A	(1)	3'-0"	6'-8"	1 3/4"	R	WD	1	HM	B6/A80.2	A6/A80.2	-	20
131B	(1)	3'-0"	6'-8"	1 3/4"	F	WD	1	HM	B6/A80.2	A6/A80.2	-	-
132	(1)	3'-0"	6'-8"	1 3/4"	R	WD	7	HM	B6/A80.2	A6/A80.2	-	20
133	(1)	3'-0"	6'-8"	1 3/4"	R	WD	7	HM	B6/A80.2	A6/A80.2	-	20
133B	(1)	3'-0"	4'-0"	1 3/4"	R2	WD	2	HM	-	A6/A80.2	-	-
134	(1)	3'-0"	6'-8"	1 3/4"	R	WD	7	HM	B6/A80.2	A6/A80.2	-	20
135	(1)	3'-0"	6'-8"	1 3/4"	F	WD	1	HM	B6/A80.2	A6/A80.2	-	20
136	(1)	3'-0"	6'-8"	1 3/4"	F	WD	1	HM	B6/A80.2	A6/A80.2	-	20
137	(1)	3'-0"	6'-8"	1 3/4"	F	WD	1	HM	B6/A80.2	A6/A80.2	-	20
138	(1)	3'-0"	6'-8"	1 3/4"	R	WD	1	HM	B6/A80.2	A6/A80.2	-	20
139	(1)	3'-0"	6'-8"	1 3/4"	F	WD	1	HM	B6/A80.2	A6/A80.2	-	-
140	(1)	3'-0"	6'-8"	1 3/4"	N	WD	1	HM	B6/A80.2	A6/A80.2	-	-
141A	(1)	3'-0"	6'-8"	1 3/4"	R	WD	7	HM	B6/A80.2	A6/A80.2	-	20
141B	(1)	3'-0"	7'-0"	1 3/4"	R	HD AL	A1/A55.1	HD AL	A1/A55.1	A1/A55.1	-	-
141C	(1)	3'-0"	6'-8"	1 3/4"	R	WD	1	HM	B6/A80.2	A6/A80.2	-	-
142A	(1)	3'-0"	6'-8"	1 3/4"	R1	WD	1	HM	B5/A80.2	A6/A80.2	-	-
142B	(1)	3'-0"	6'-8"	1 3/4"	WD	WD	-	-	-	-	-	-
143A	(1)	3'-0"	6'-8"	1 3/4"	R	WD	7	HM	B6/A80.2	A6/A80.2	-	20
143B	(1)	3'-0"	7'-0"	1 3/4"	R	HD AL	A1/A55.1	HD AL	A1/A55.1	A1/A55.1	-	-
144	(1)	3'-0"	6'-8"	1 3/4"	R1	WD	1	HM	B6/A80.2	A6/A80.2	-	-
145A	(1)	3'-0"	6'-8"	1 3/4"	R	WD	7	HM	B6/A80.2	A6/A80.2	-	20
145B	(1)	3'-0"	7'-0"	1 3/4"	SF2	HD AL	A1/A55.1	HD AL	A1/A55.1	A1/A55.1	-	-
145C	(1)	3'-0"	6'-8"	1 3/4"	R	WD	1	HM	B6/A80.2	A6/A80.2	-	-
146	(1)	3'-0"	4'-0"	1 3/4"	R2	WD	2	HM	-	A6/A80.2	-	-
147A	(1)	3'-0"	6'-8"	1 3/4"	R	WD	7	HM	B6/A80.2	A6/A80.2	-	20
147B	(1)	3'-0"	7'-0"	1 3/4"	SF2	HD AL	A1/A55.1	HD AL	A1/A55.1	A1/A55.1	-	-
147C	(1)	3'-0"	4'-0"	1 3/4"	R2	WD	2	HM	-	A6/A80.2	-	-
148	(1)	3'-0"	4'-0"	1 3/4"	R2	WD	2	HM	-	A6/A80.2	-	-
149A	(1)	3'-0"	6'-8"	1 3/4"	R	WD	6	HM	B5/A80.2	A5/A80.2	-	20
149B	(2)	3'-0"	6'-8"	1 3/4"	F	WD	1	HM	B6/A80.2	A6/A80.2	-	20
C02A	(2)	3'-0"	6'-8"	1 3/4"	SF2	WD	6	HM	B5/A80.2	A6/A80.2	-	20
C02B	(2)	3'-0"	7'-0"	1 3/4"	SF2	HD AL	A1/A55.1	HD AL	A1/A55.1	A1/A55.1	-	-
C03A	(1)	3'-4"	7'-10"	1 3/4"	F	HM	-	HM	B4/A80.2	A4/A80.2	-	-
C03B	(1)	3'-0"	6'-8"	1 3/4"	F	WD	1	HM	B6/A80.2	A6/A80.2	-	20
C04	(1)	3'-0"	8'-0"	1 3/4"	R	WD	3	AL	D5/A82.2	A6/A82.1	-	20



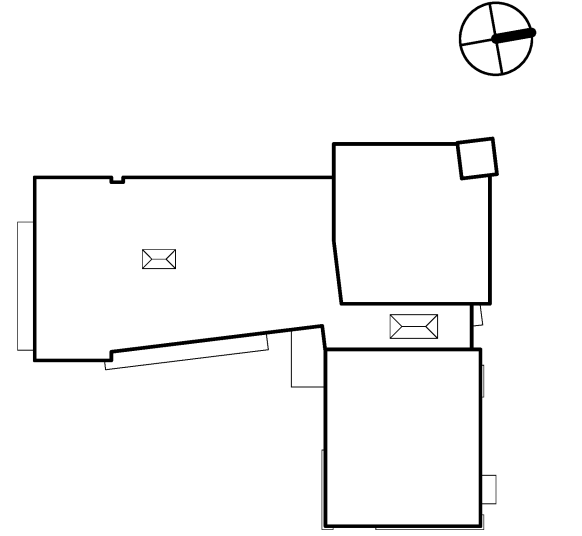
AUBURN PORTLAND MANCHESTER

JEWISH COMMUNITY ALLIANCE OF SOUTHERN MAINE

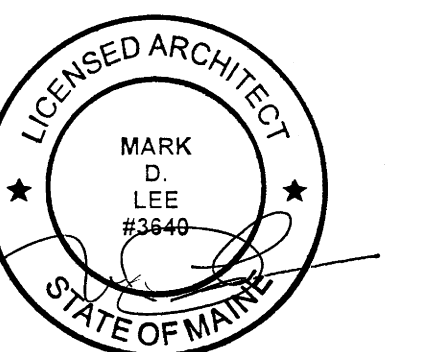
PORTLAND, ME

Harriman Project No. 15309

Key Plan



Mark	Date	Description
-	09-04-15	DESIGN DEVELOPMENT REVIEW
--	03-25-16	CONSTRUCTION DOCUMENTS



PA / PE	MDL	© 2016
Drawn By	JAE	Harriman Associates

DOOR SCHEDULE

A60.1