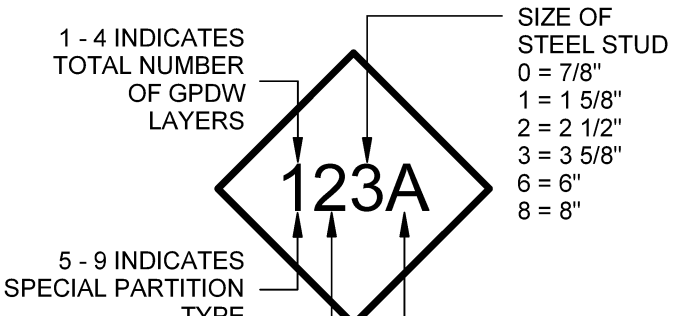


PARTITION TAG KEY



INDICATES PARTITION HAS BATT INSULATION

A = SOUND

B = SOUND ATTENUATING

T = THERMAL BATT

N = NO INSULATION

R = SOUND BATT AND RESILIENT CHANNELS

TYPE OF GYPSUM DRYWALL

1 = GPDW FULL HEIGHT ES

2 = ABUSE RESISTANT GPDW FULL HEIGHT ES

3 = CEMENT BD W/ GPDW FULL HEIGHT

4 = FIRE RATED GPDW FULL HEIGHT ES

5 = GPDW W/ RESILIENT CHANNELS FULL HEIGHT

6 = IMPACT / FIRE GPDW FULL HEIGHT ES

7 = GPDW VARYING HEIGHT ES

8 = ABUSE RESISTANT GPDW VARYING HGT ES

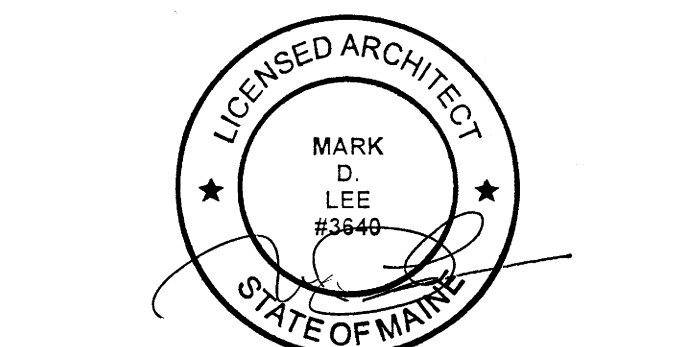
9 = IMPACT RESISTANT GPDW VARYING HGT ES

PARTITION TAG KEY GENERAL NOTES

- NOT ALL PARTITION TAGS SHOWN TO THE LEFT ARE USED ON THIS PROJECT. VERIFICATION OF PARTITION TAGS USED MUST BE MADE FROM THE FLOOR PLANS THEN REFERENCED HERE FOR EXACT MATERIALS USED.
- SEE GENERAL NOTE #16 IN DETAIL A1/A40.1 FOR FURTHER INSTRUCTIONS REGARDING THE USE OF ABUSE RESISTANT GPDW.

Issues and Revisions

Mark	Date	Description
-	09-04-15	DESIGN DEVELOPMENT REVIEW
-	03-25-16	CONSTRUCTION DOCUMENTS



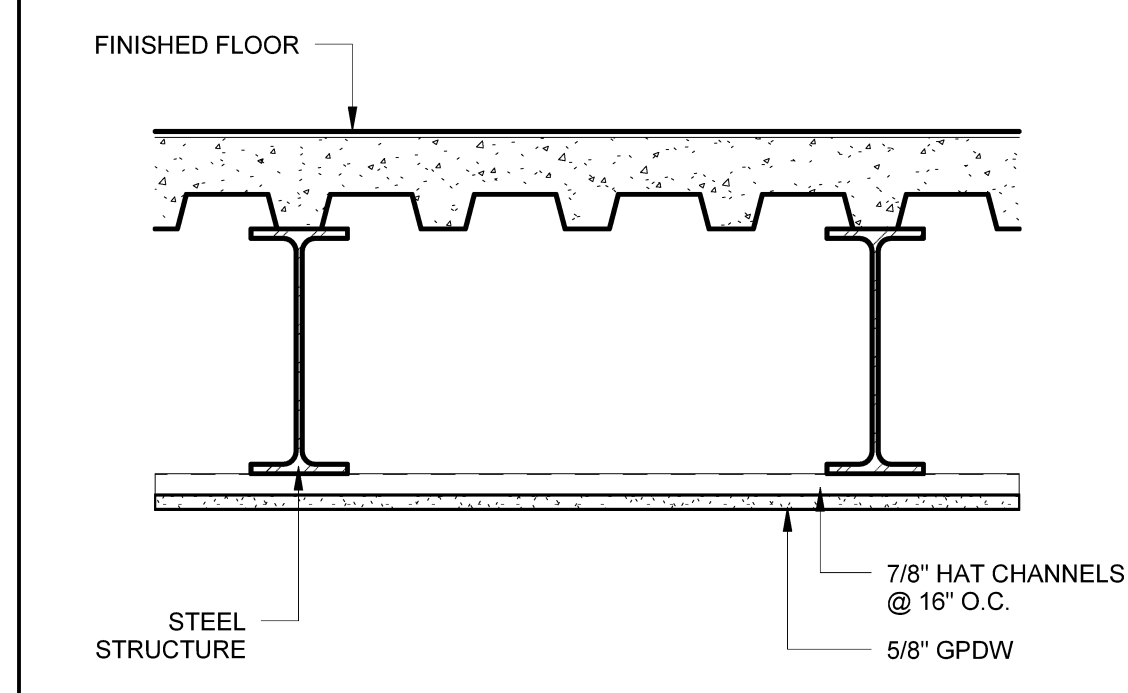
Drawing Scale

1 1/2" = 1'-0"

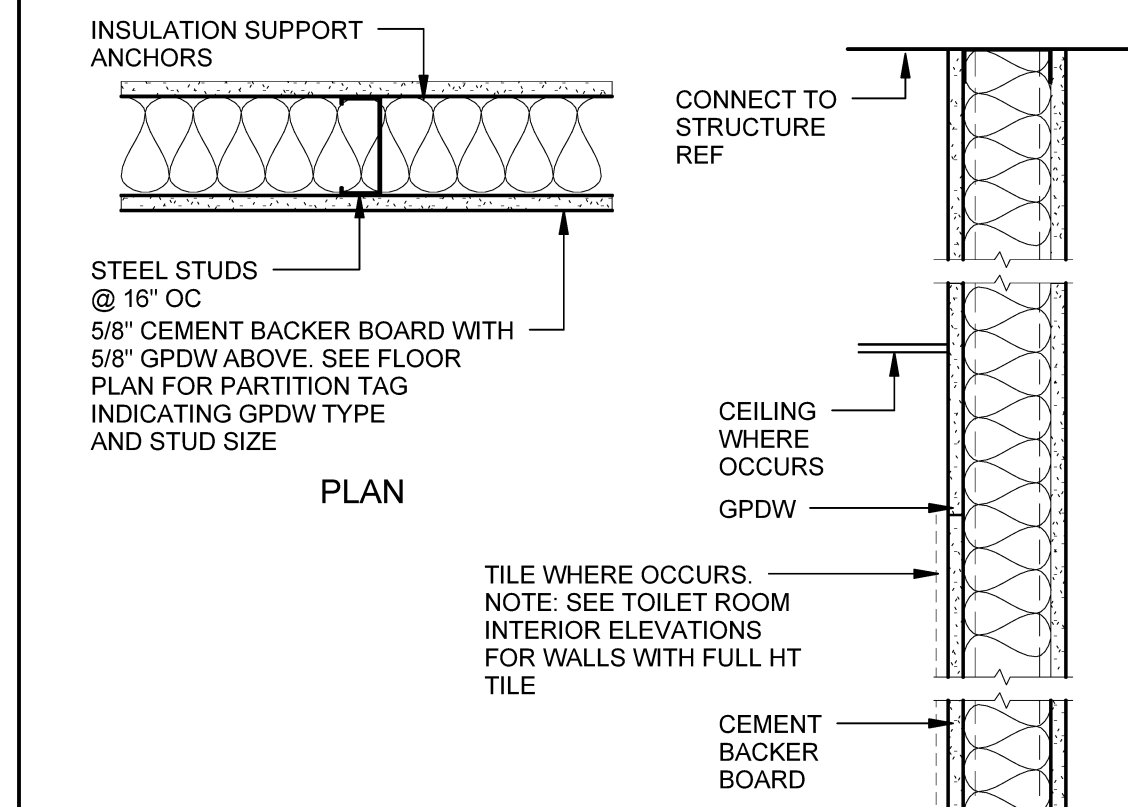
PA / PE MDL © 2016 Harriman Associates

CONSTRUCTION SYSTEMS

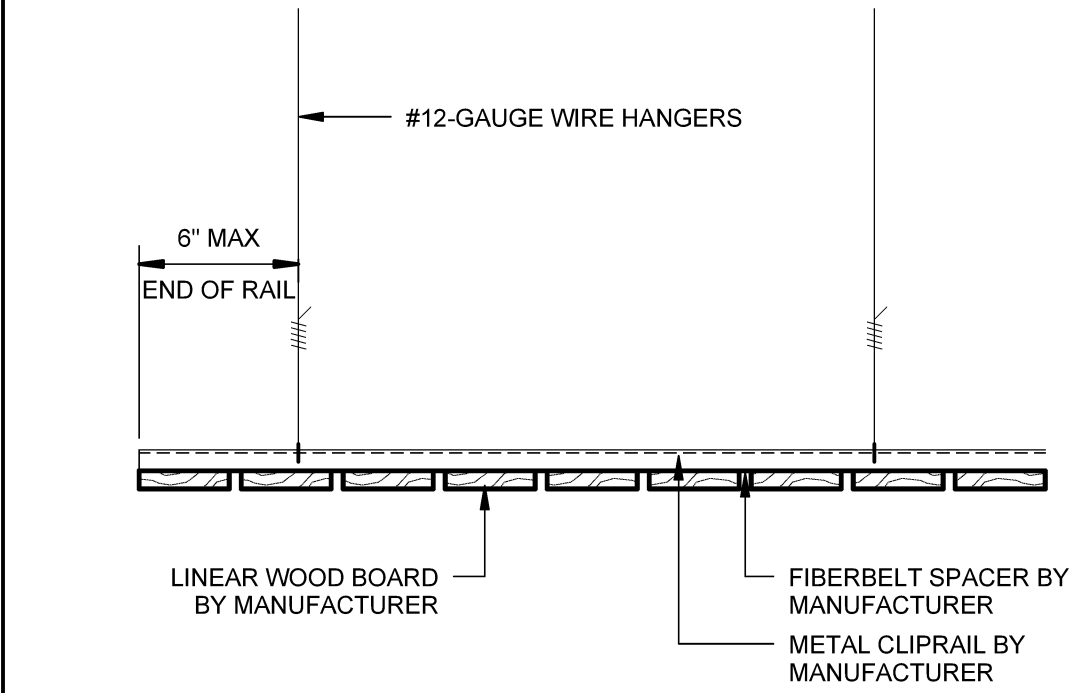
A40.1



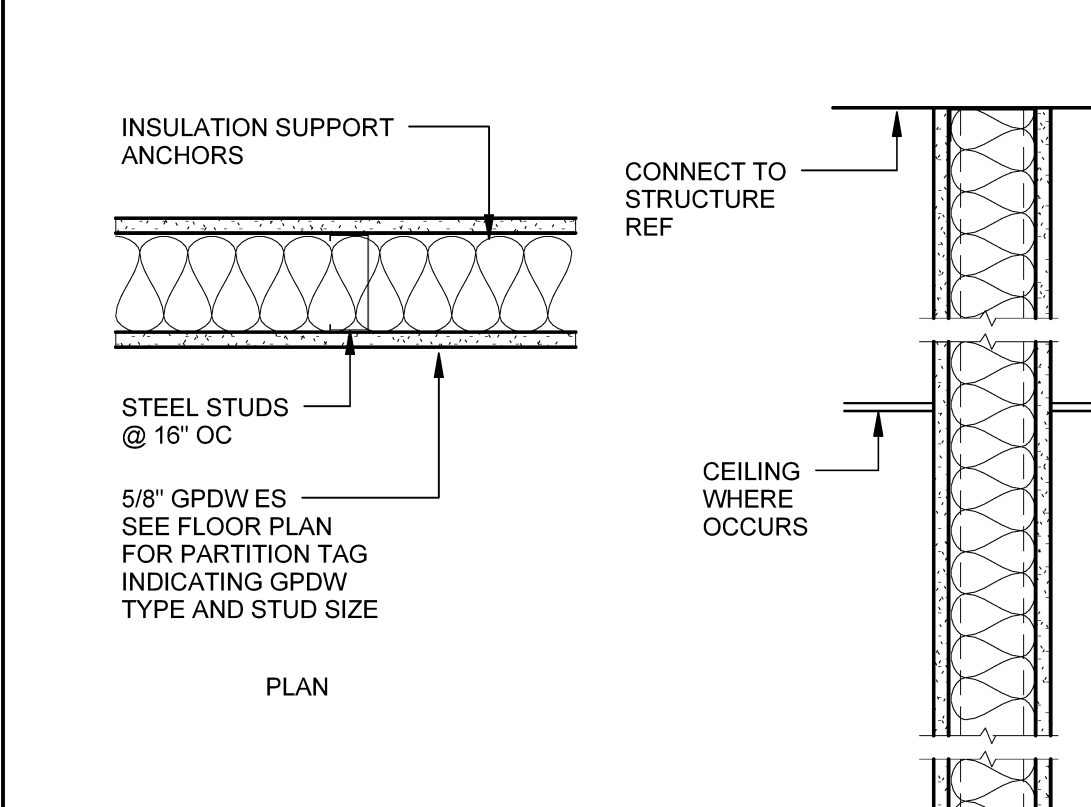
GPDW CEILING SYSTEM ON STRUCTURE
NON-RATED UL NO. C3



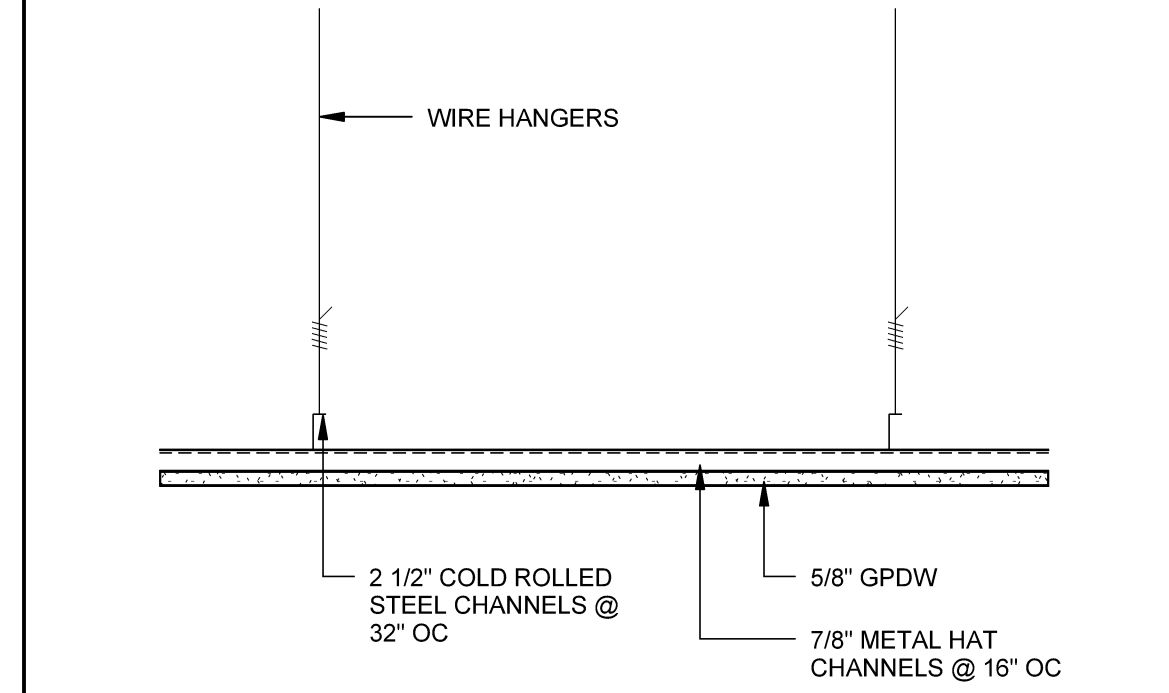
3 5/8\"/>		
NON-RATED		233A
6\"/>		
NON-RATED		236A
8\"/>		
NON-RATED		238A



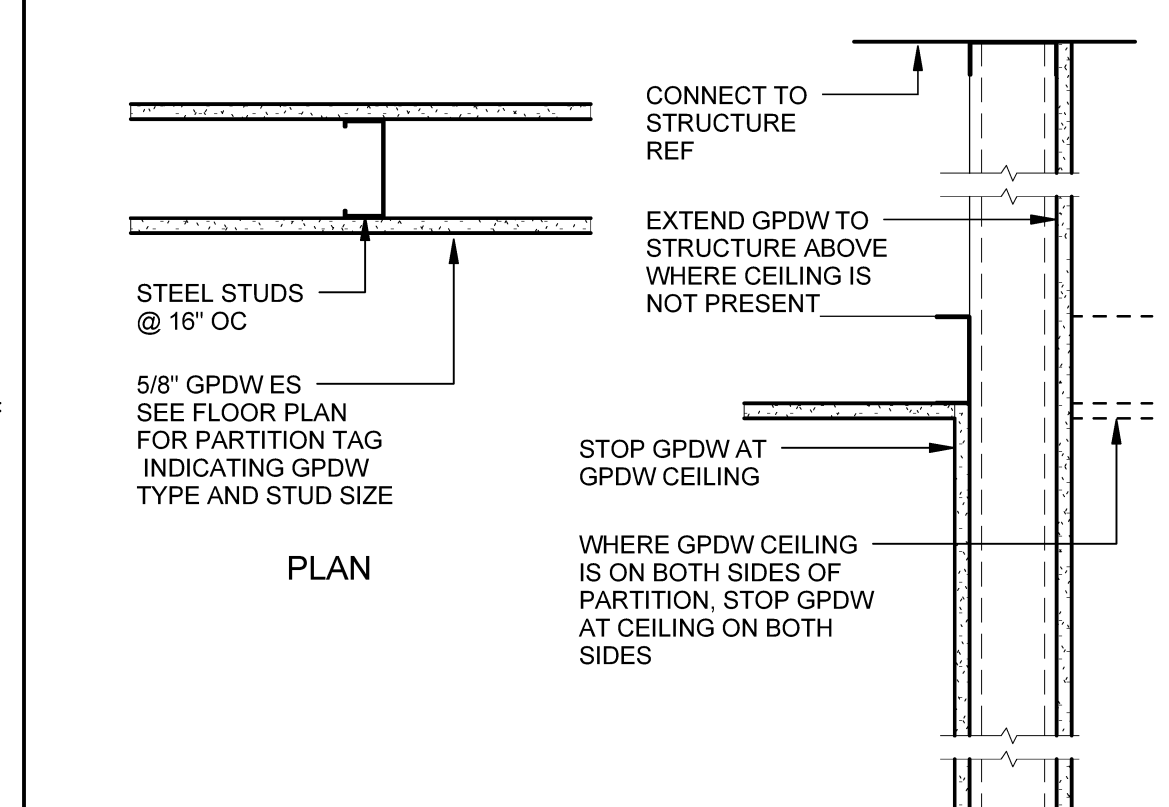
SUSPENDED WOOD CEILING SYSTEM
NON-RATED UL NO. C2



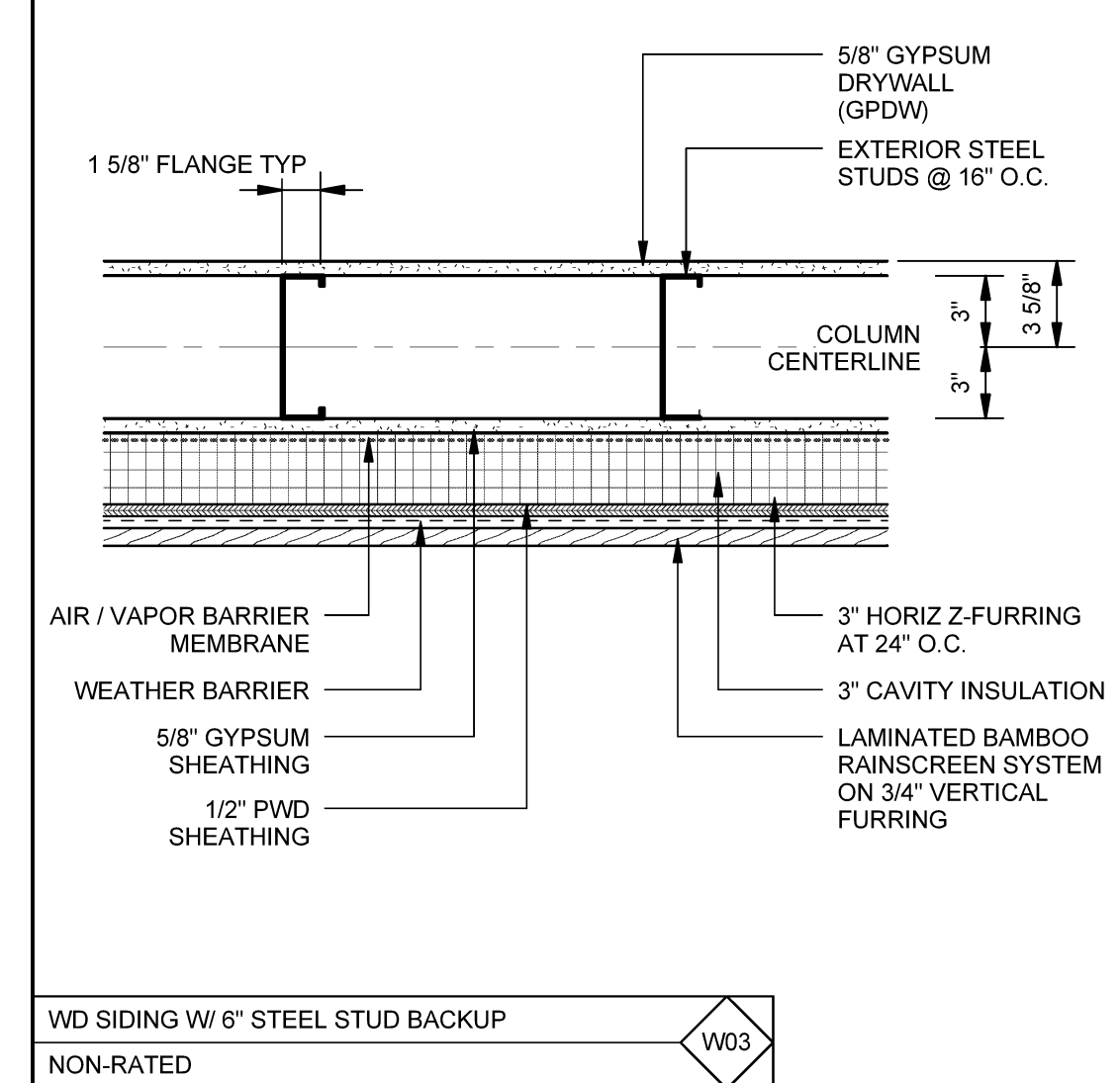
3 5/8\"/>		
NON-RATED		243A
1 HR FIRE-RATED	UL NO. U465	246A
6\"/>		
NON-RATED		248A
8\"/>		
NON-RATED		248A



SUSPENDED GPDW CEILING SYSTEM
NON-RATED UL NO. C1



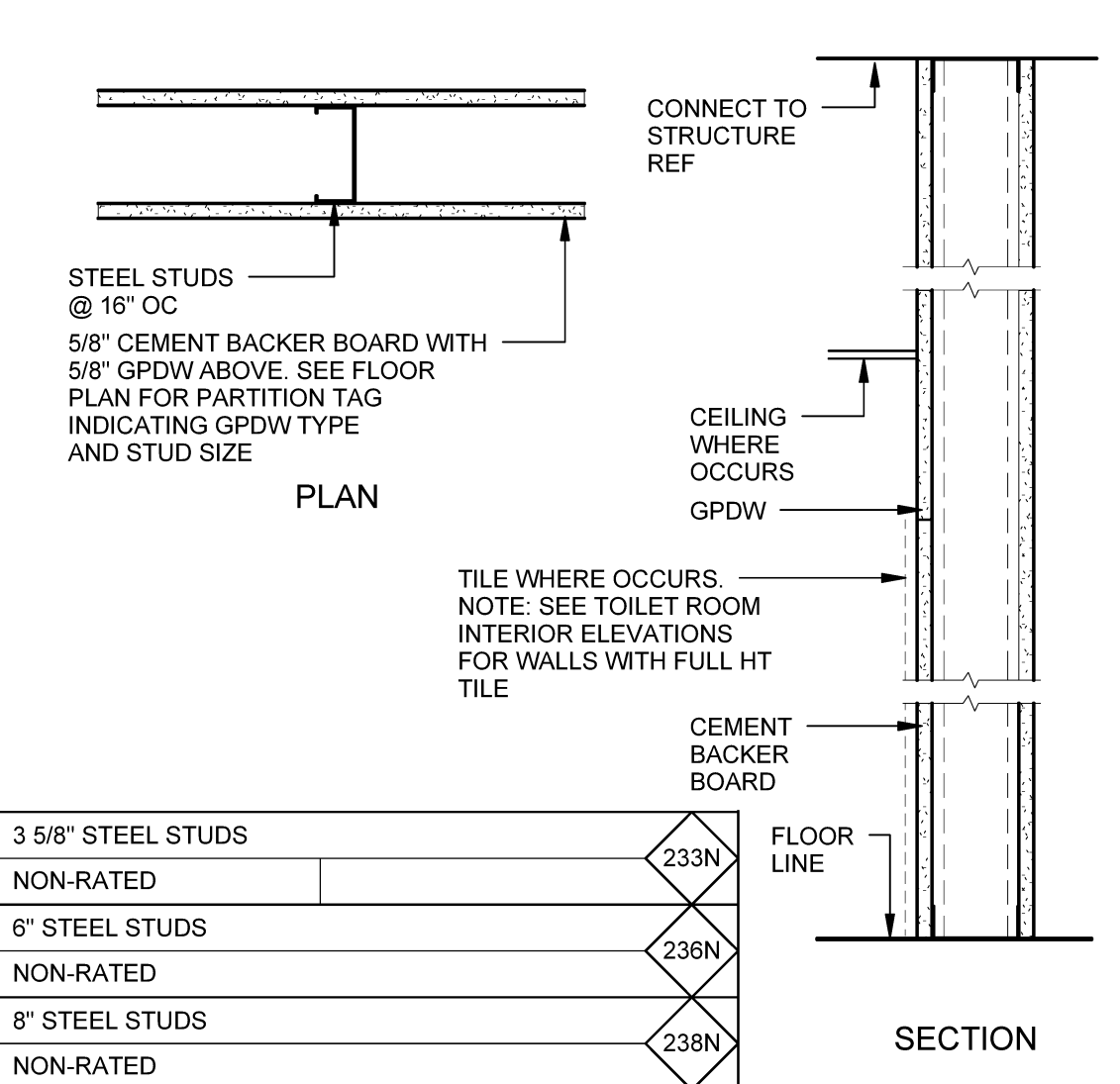
3 5/8\"/>		
NON-RATED		273N
6\"/>		
NON-RATED		276N
8\"/>		
NON-RATED		278N



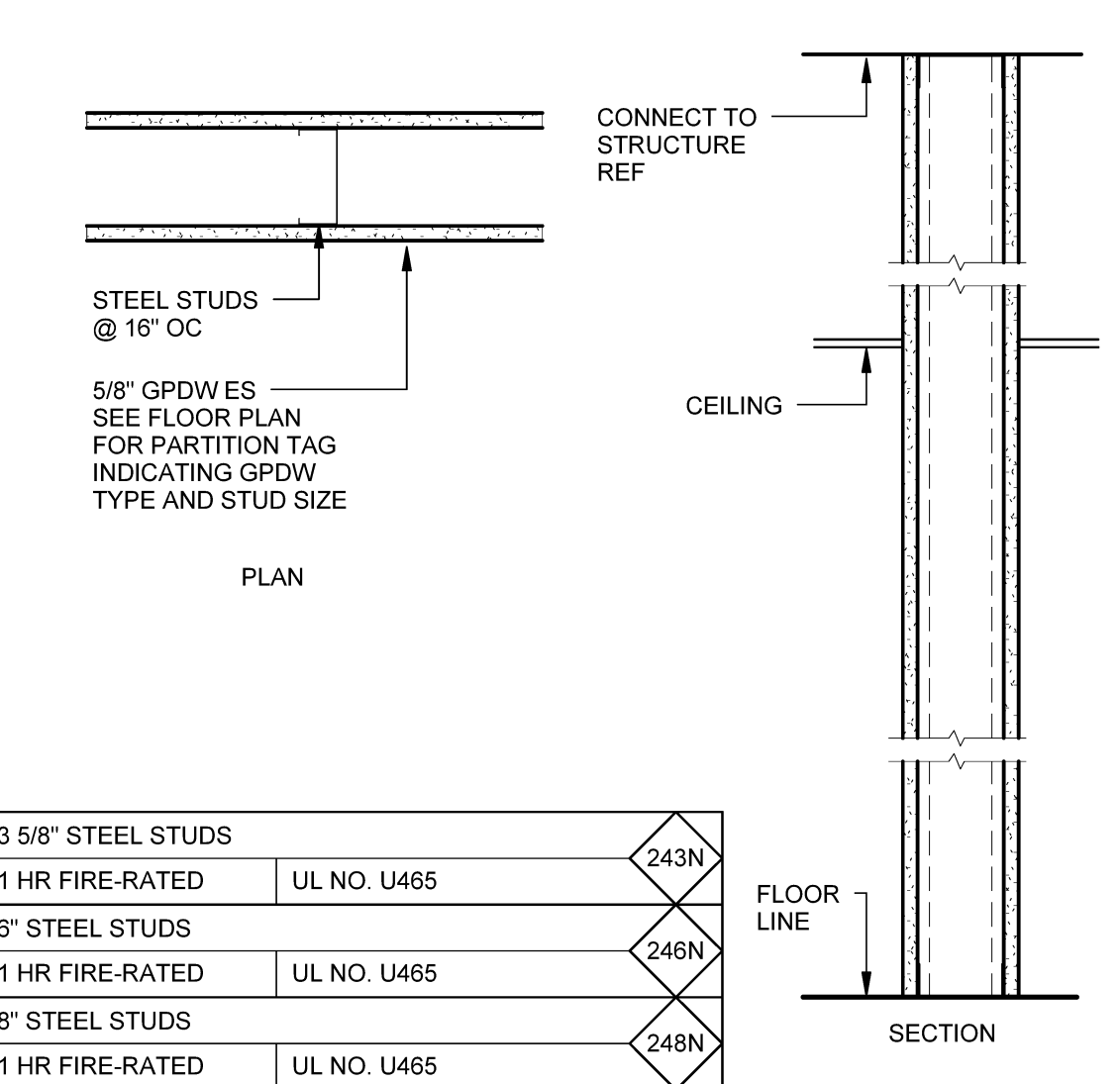
WD SIDING W/ 6\"/>



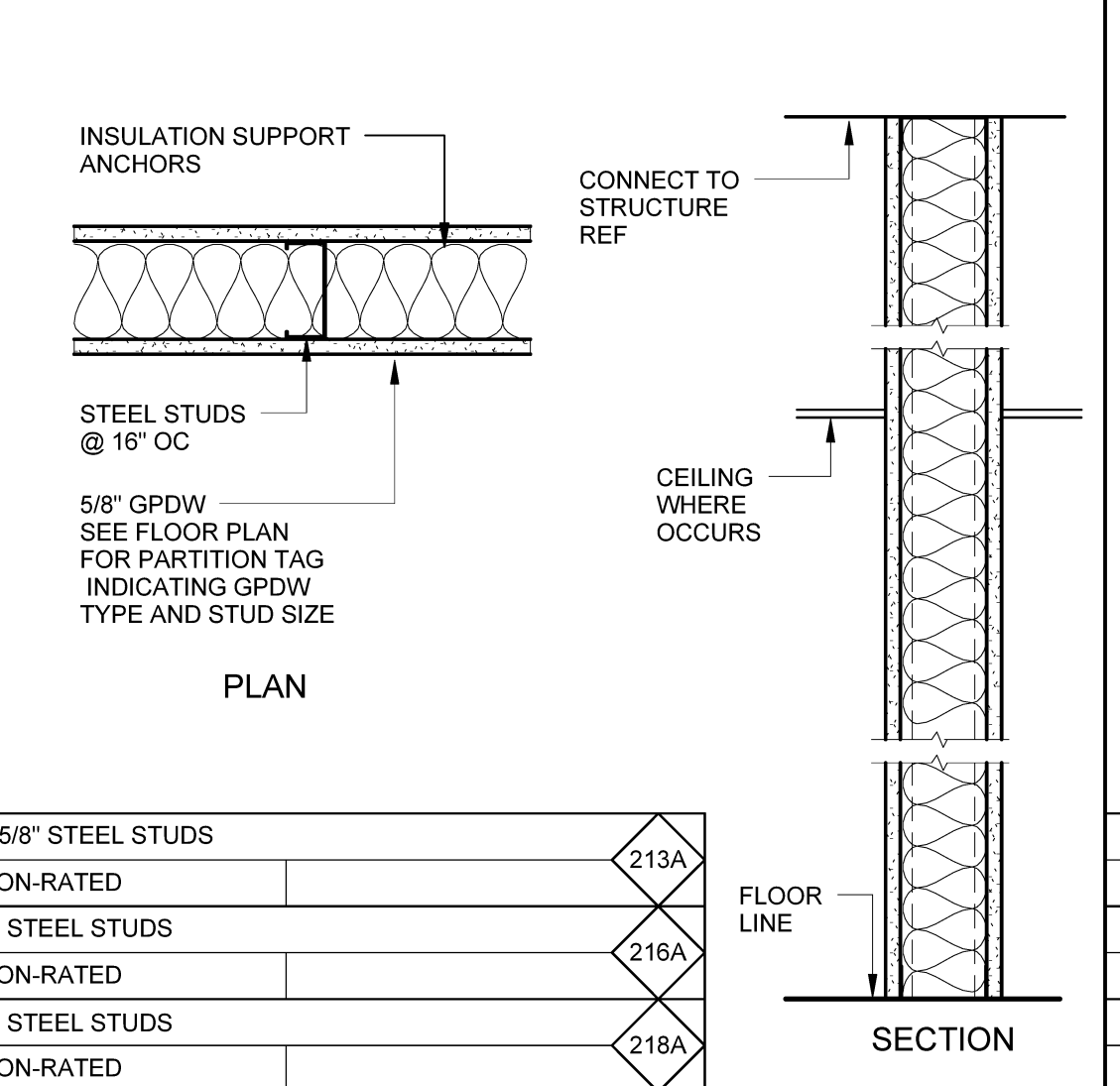
5/8\"/>



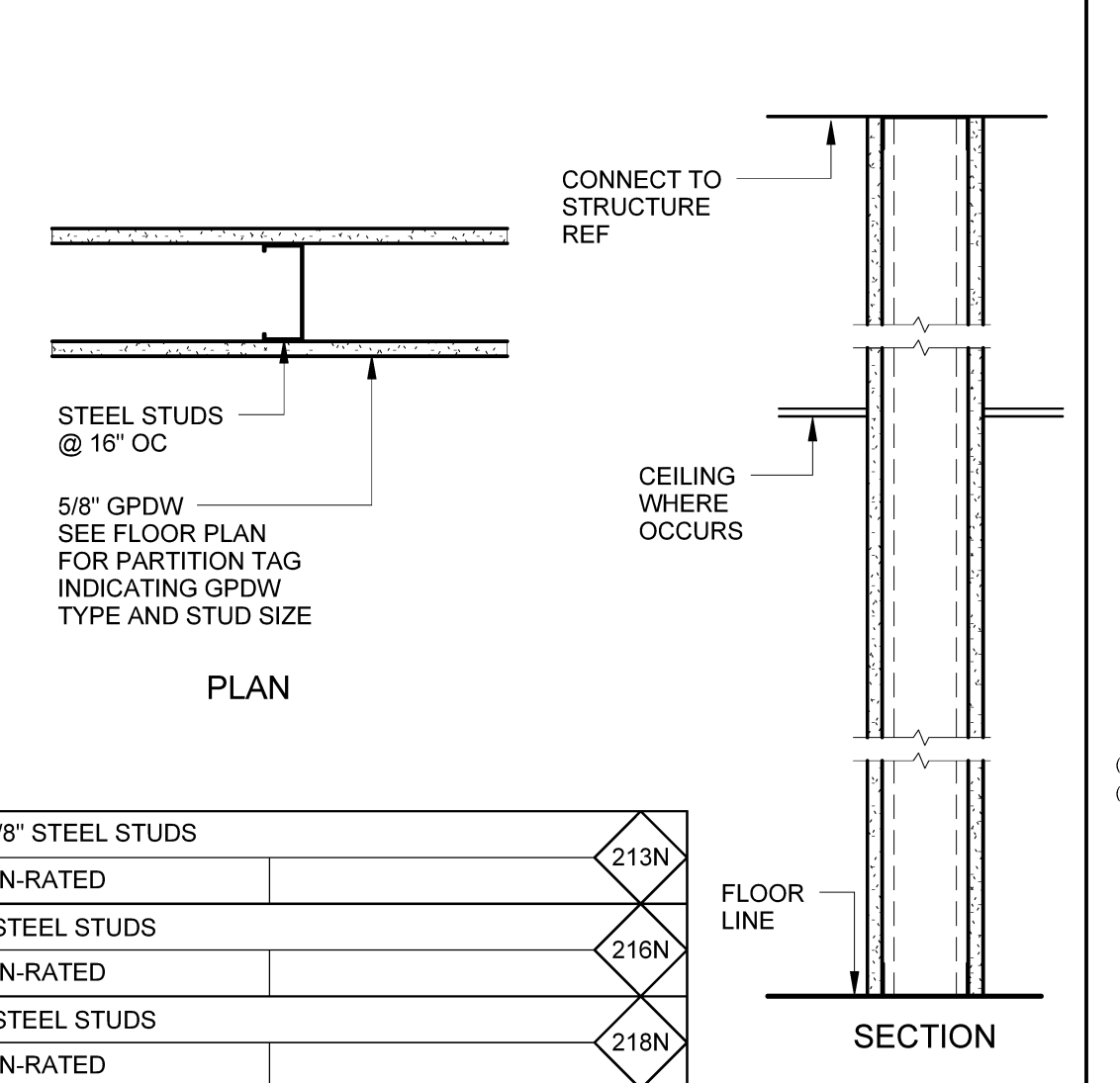
5/8\"/>



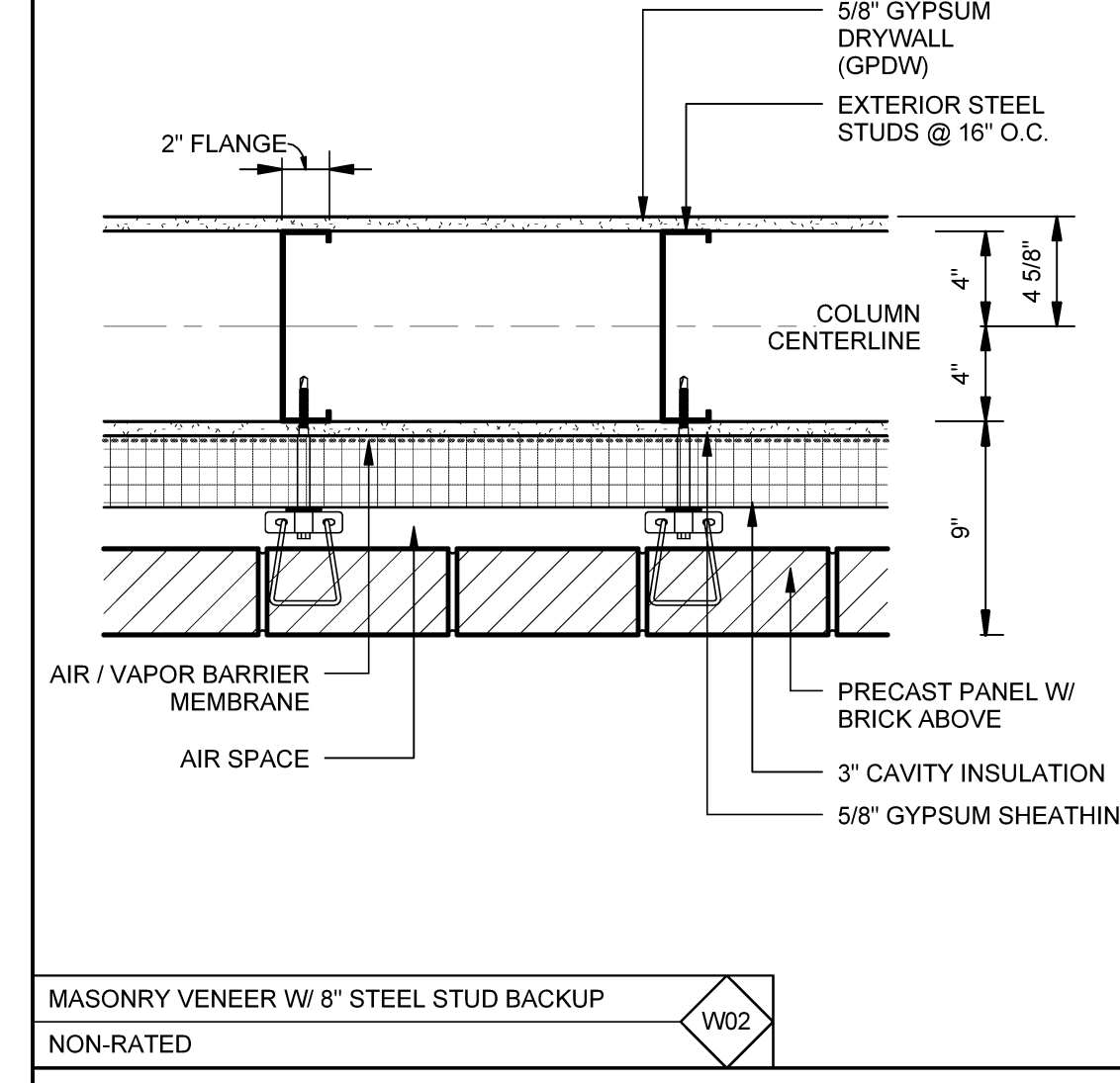
5/8\"/>



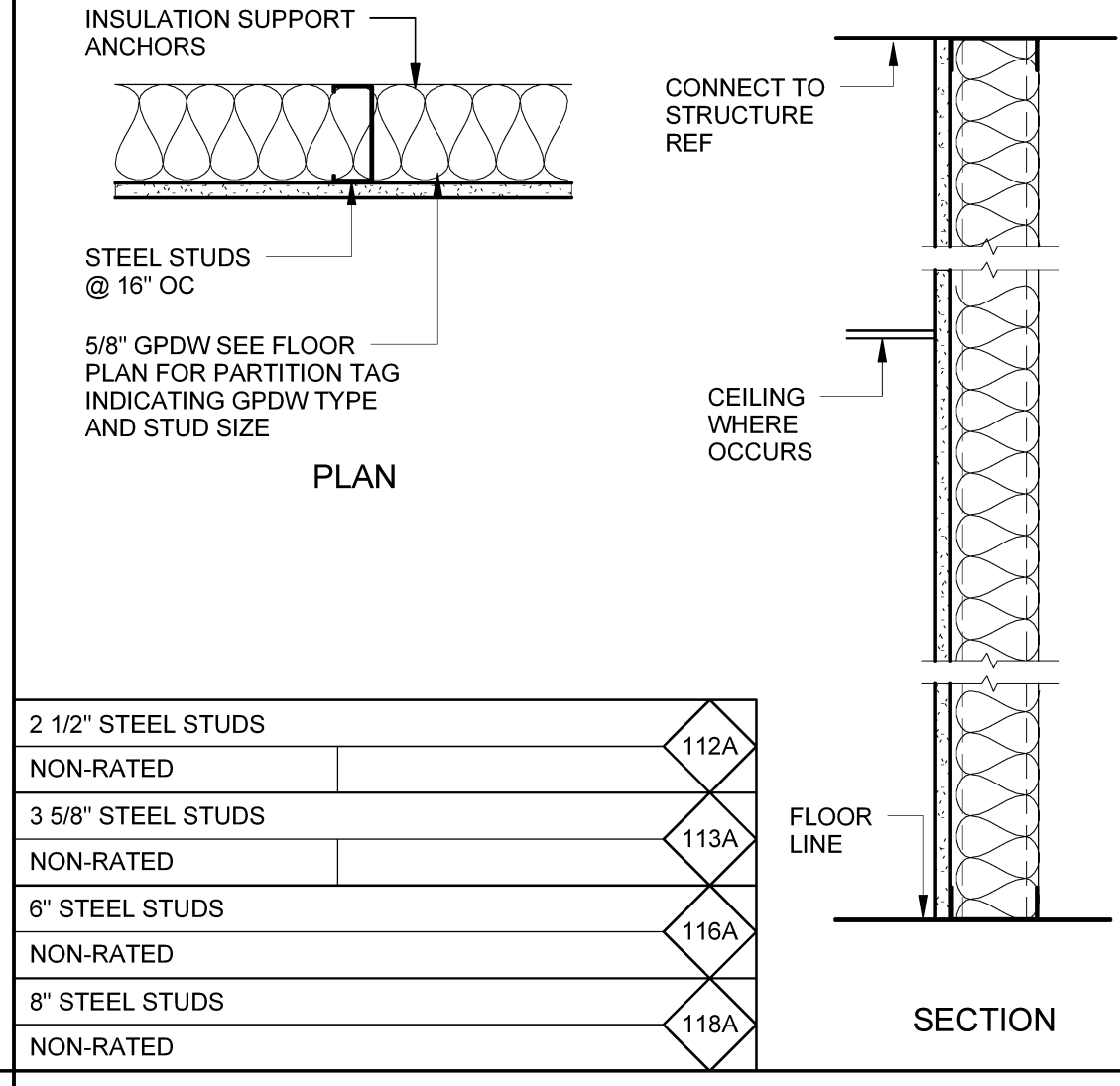
5/8\"/>



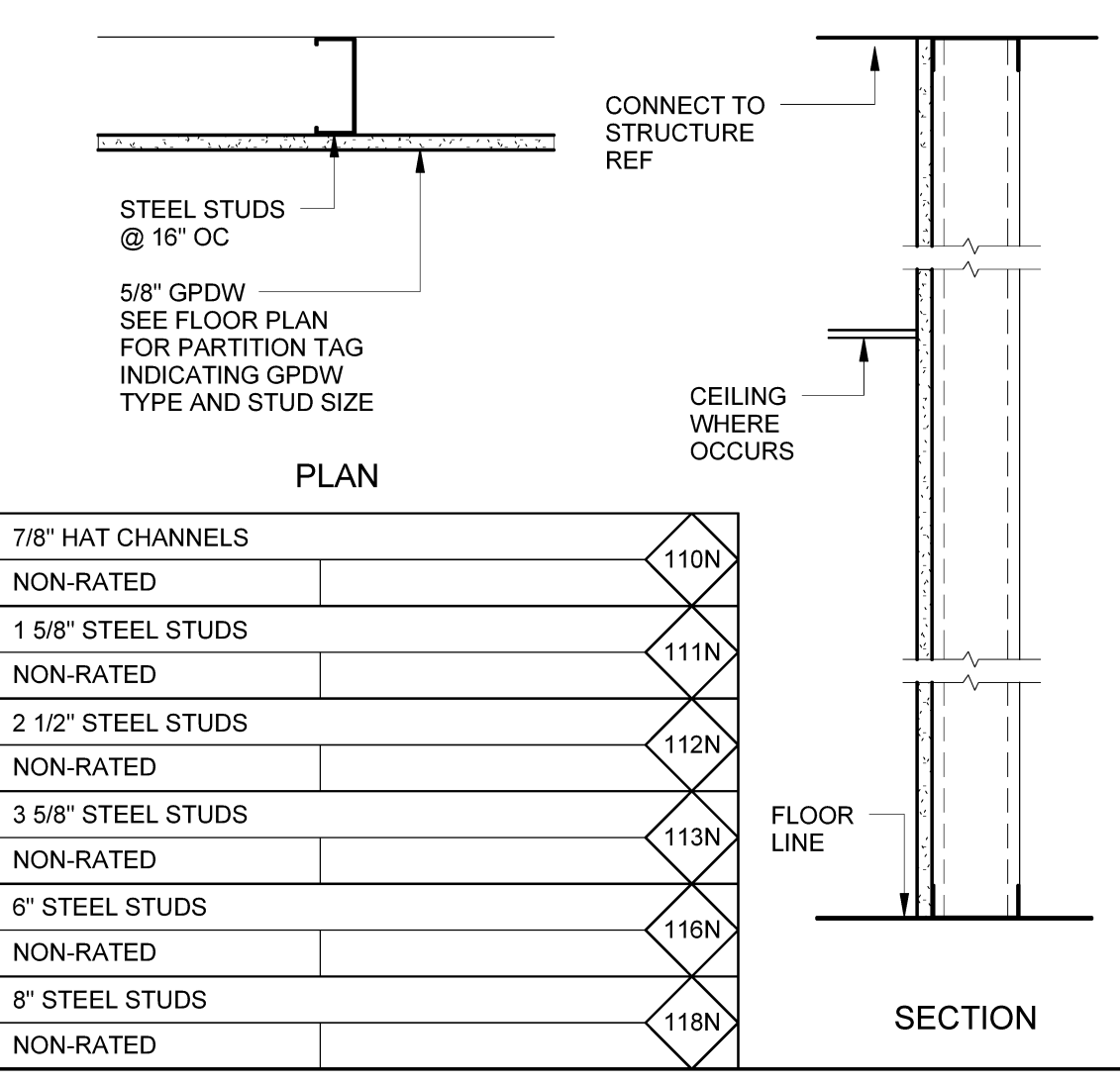
5/8\"/>



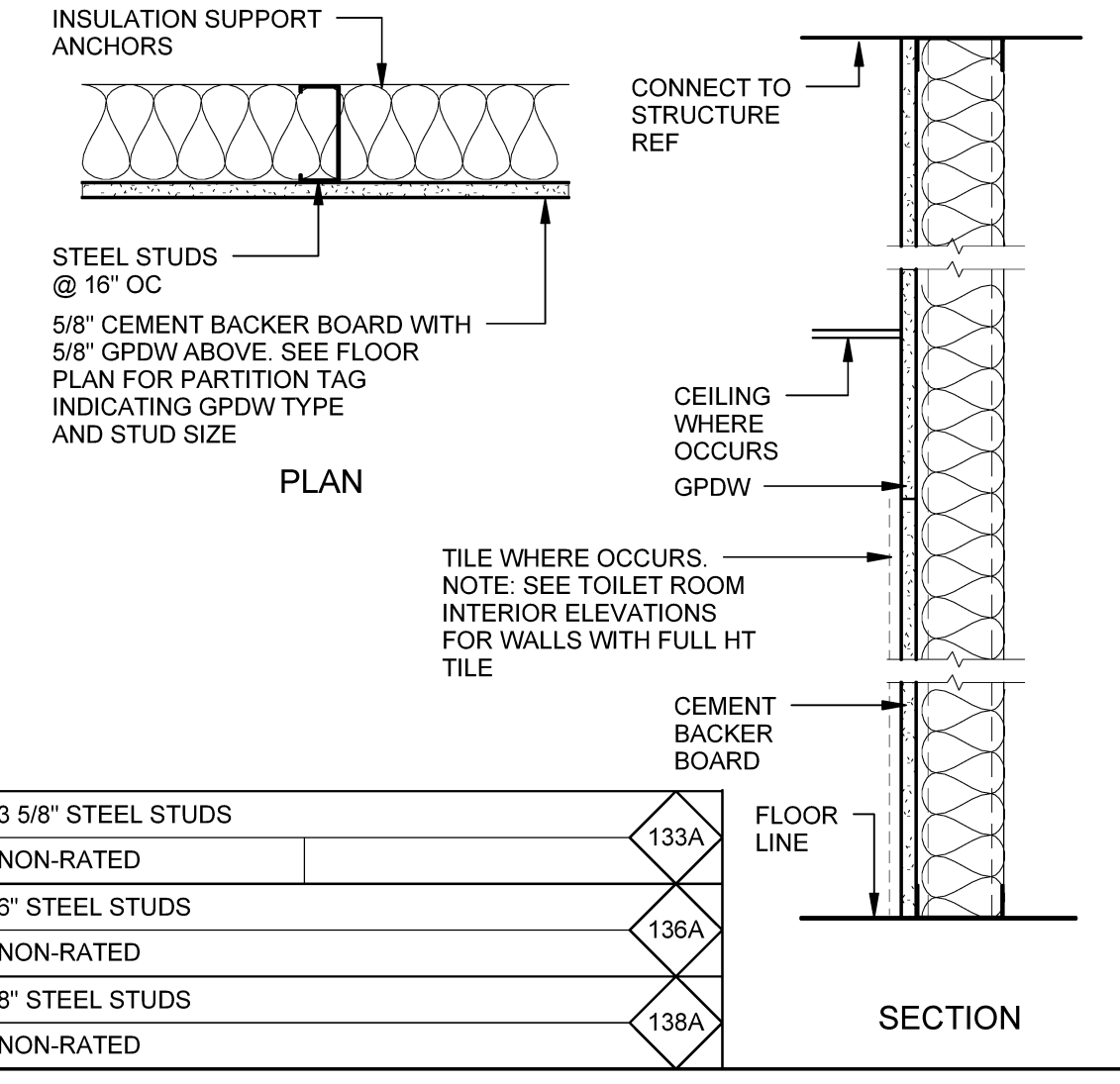
MASONRY VENEER W/ 8\"/>



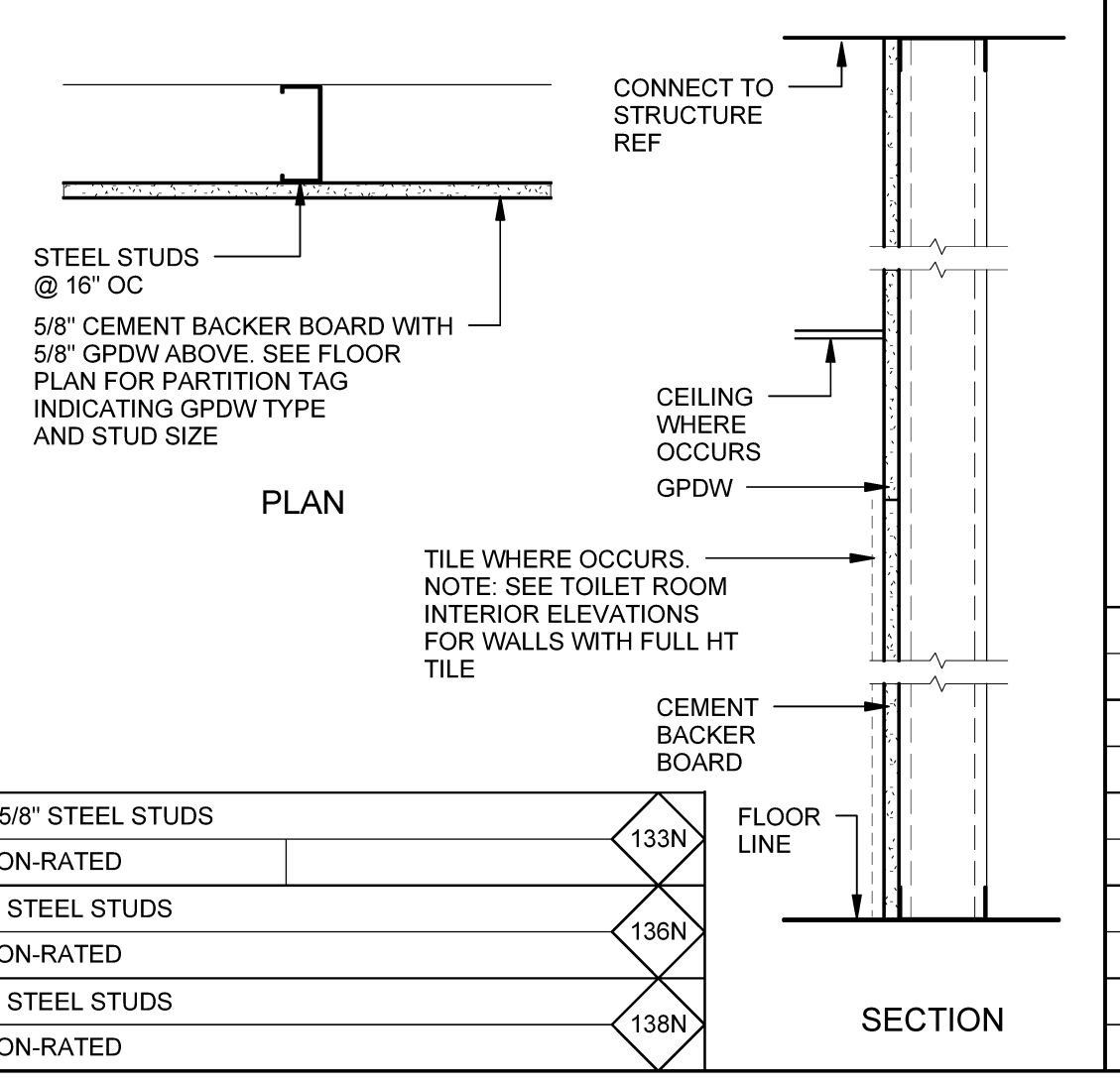
5/8\"/>



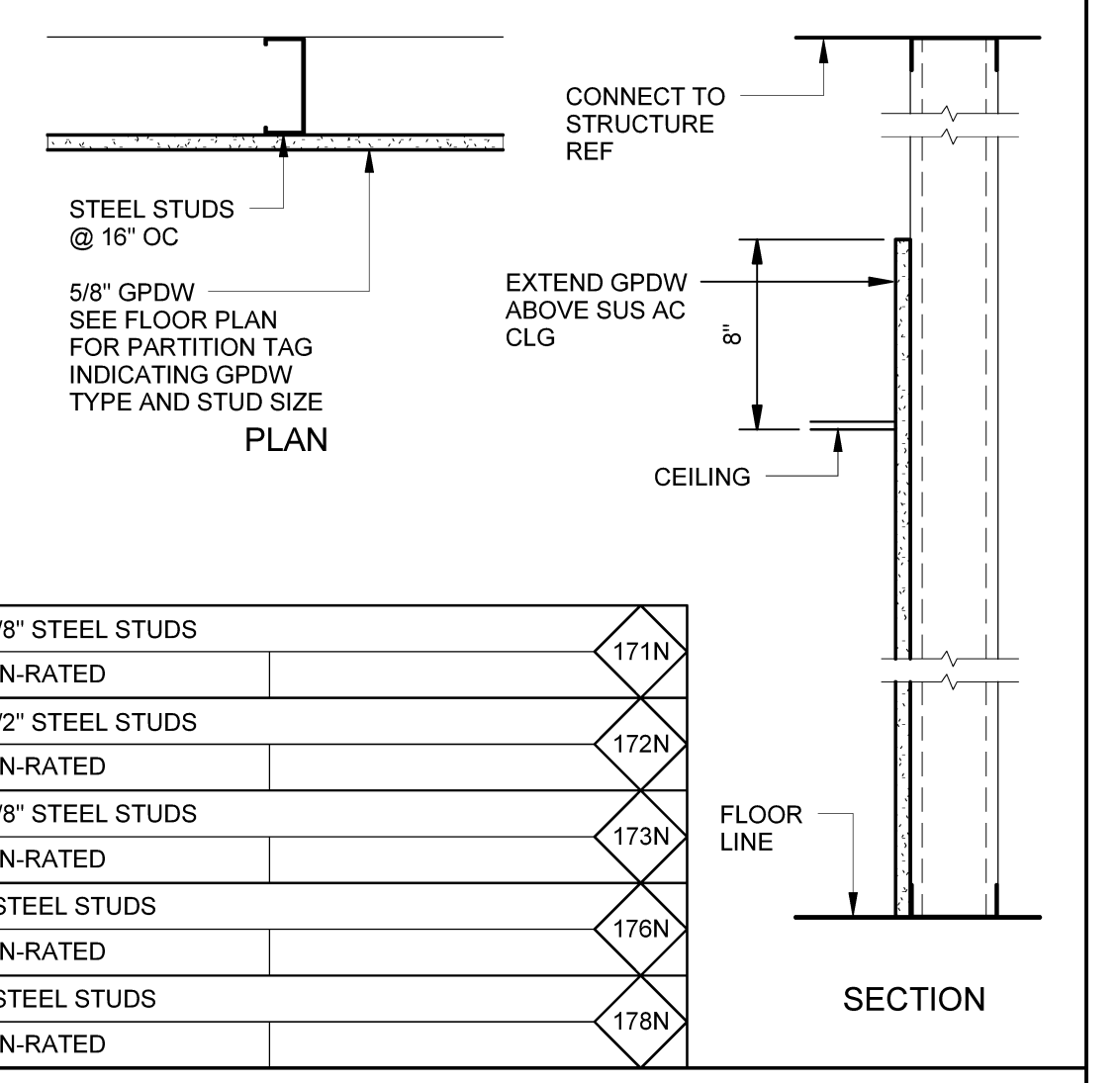
5/8\"/>



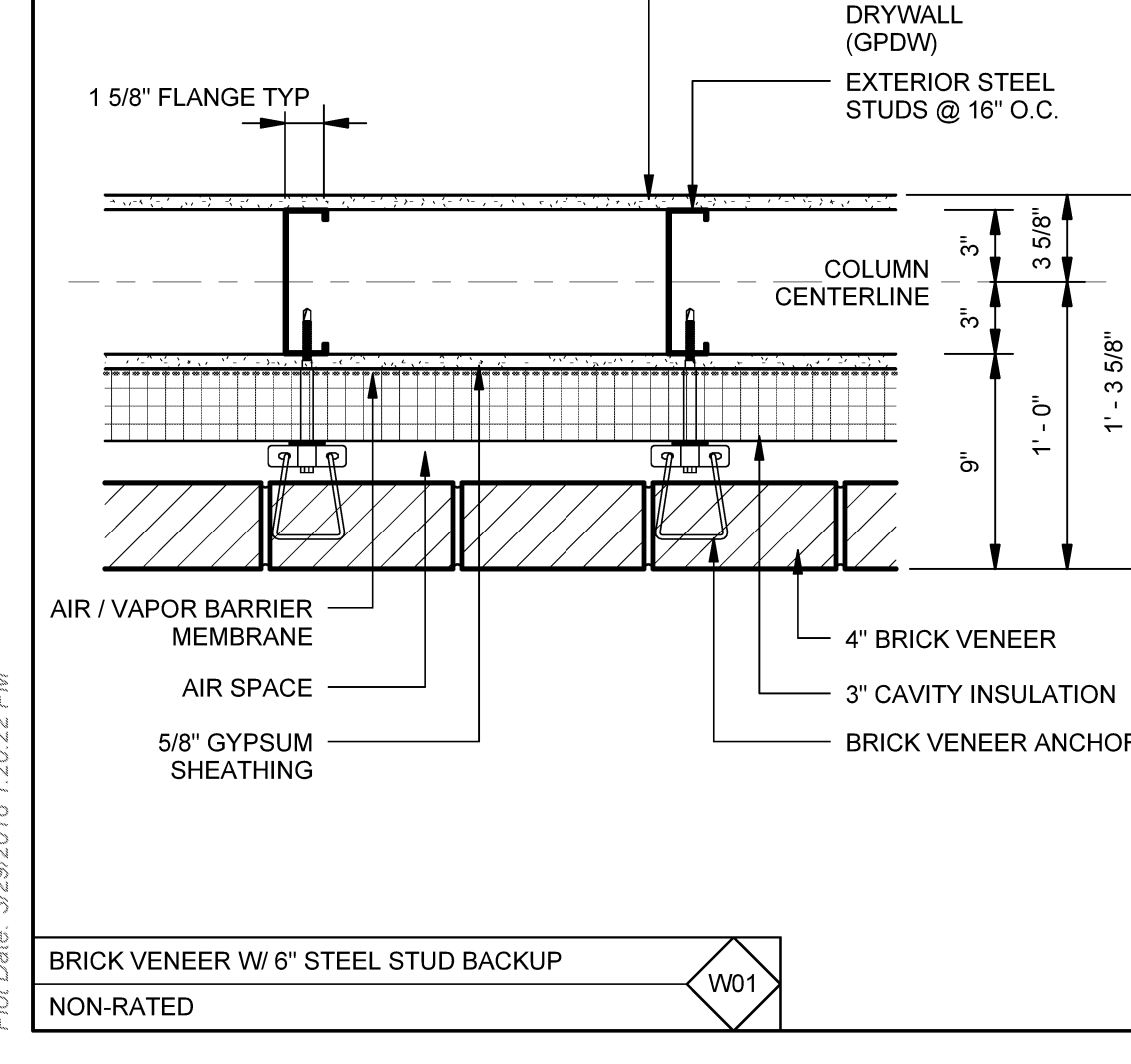
5/8\"/>



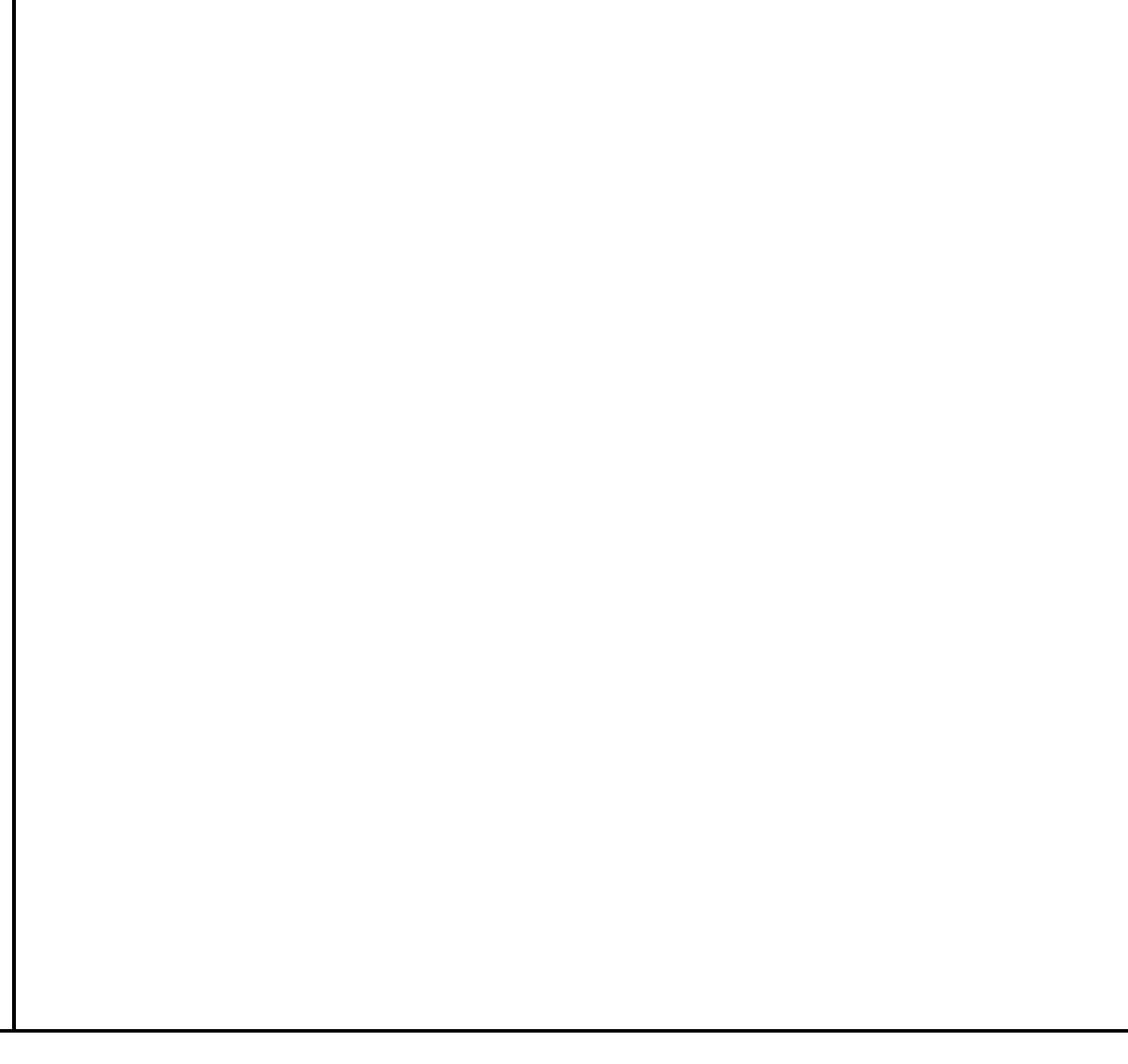
5/8\"/>



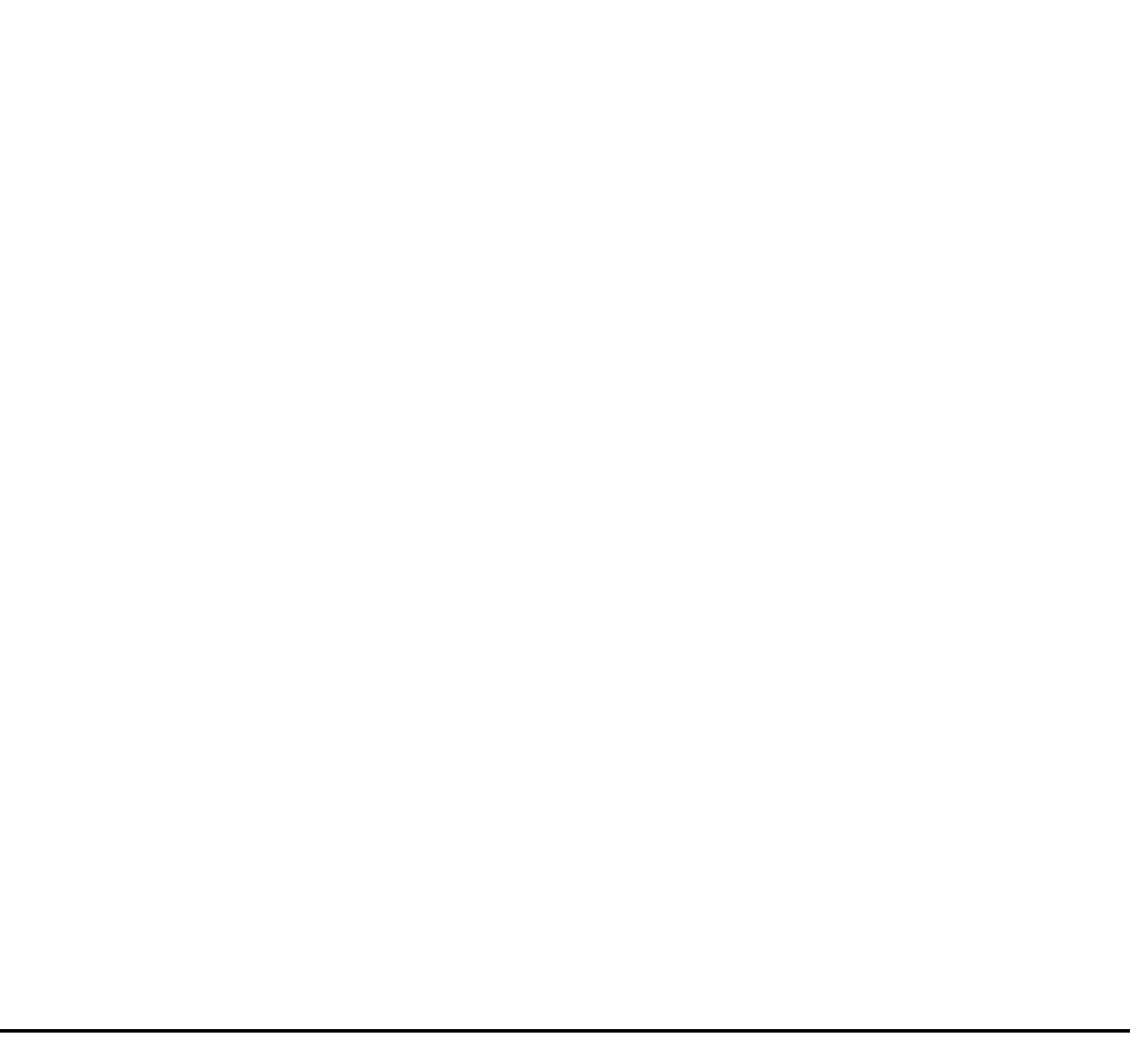
5/8\"/>



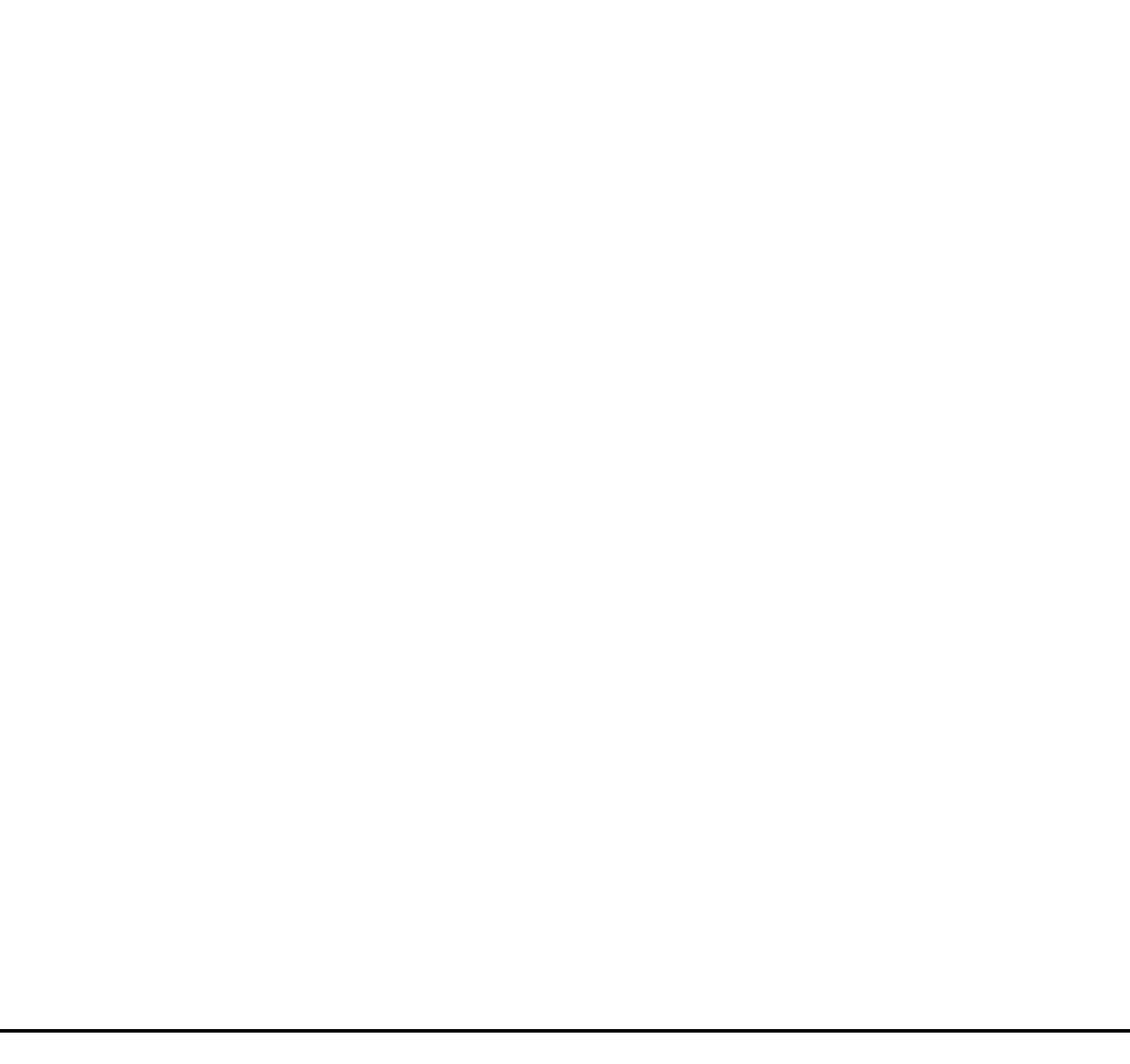
BRICK VENEER W/ 6\"/>



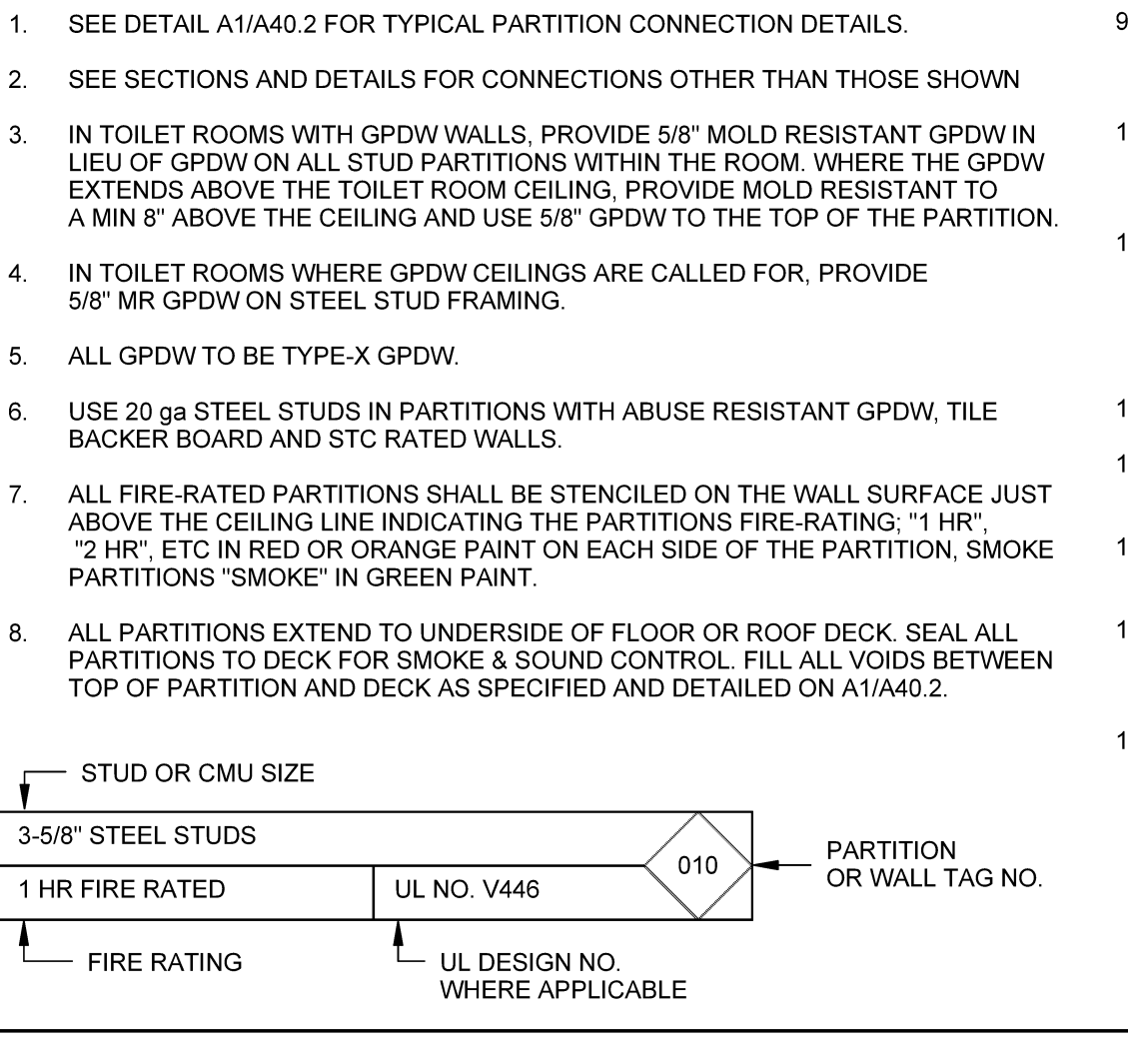
5/8\"/>



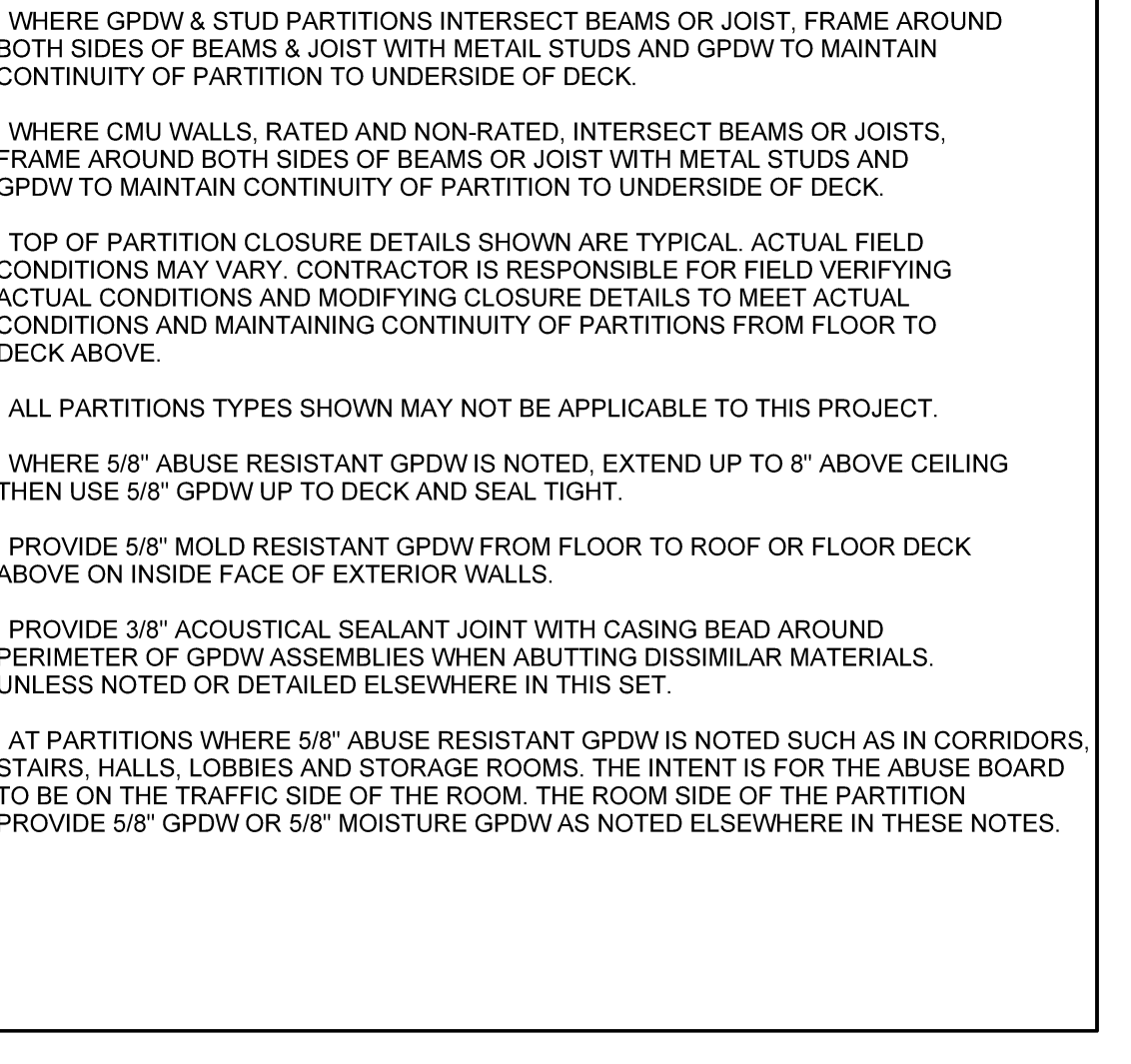
5/8\"/>



5/8\"/>



5/8\"/>



5/8\"/>

GENERAL NOTES

- SEE DETAIL A1/A40.2 FOR TYPICAL PARTITION CONNECTION DETAILS.
- SEE SECTIONS AND DETAILS FOR CONNECTIONS OTHER THAN THOSE SHOWN.
- IN TOILET ROOMS WITH GPDW WALLS, PROVIDE 5/8\"/>
- IN TOILET ROOMS WHERE GPDW CEILING IS CALLED FOR, PROVIDE 5/8\"/>
- ALL GPDW TO BE TYPE-X GPDW.
- USE 20 ga STEEL STUDS IN PARTITIONS WITH ABUSE RESISTANT GPDW, TILE BACKER BOARD AND STC RATED WALLS.
- ALL FIRE-RATED PARTITIONS SHALL BE STENCILED ON THE WALL SURFACE JUST ABOVE THE CEILING LINE INDICATING THE PARTITION'S FIRE-RATING: "1 HR", "2 HR", ETC IN RED OR ORANGE PAINT ON EACH SIDE OF THE PARTITION. SMOKE PARTITIONS "SMOKE" IN GREEN PAINT.
- ALL PARTITIONS EXTEND TO UNDERSIDE OF FLOOR OR ROOF DECK. SEAL ALL PARTITIONS TO DECK FOR SMOKE & SOUND CONTROL. FILL ALL VOIDS BETWEEN TOP OF PARTITION AND DECK AS SPECIFIED AND DETAILED ON A1/A40.2.
- WHERE GPDW & STUD PARTITIONS INTERSECT BEAMS OR JOIST, FRAME AROUND BOTH SIDES OF BEAMS & JOIST WITH METAL STUDS AND GPDW TO MAINTAIN CONTINUITY OF PARTITION TO UNDERSIDE OF DECK.
- WHERE CMU WALLS, RATED AND NON-RATED, INTERSECT BEAMS OR JOISTS, FRAME AROUND BOTH SIDES OF BEAMS OR JOIST WITH METAL STUDS AND GPDW TO MAINTAIN CONTINUITY OF PARTITION TO UNDERSIDE OF DECK.
- TOP OF PARTITION CLOSURE DETAILS SHOWN ARE TYPICAL. ACTUAL FIELD CONDITIONS MAY VARY. CONTRACTOR IS RESPONSIBLE FOR FIELD VERIFYING ACTUAL CONDITIONS AND MODIFYING CLOSURE DETAILS TO MEET ACTUAL CONDITIONS AND MAINTAINING CONTINUITY OF PARTITIONS FROM FLOOR TO DECK ABOVE.
- ALL PARTITIONS TYPES SHOWN MAY NOT BE APPLICABLE TO THIS PROJECT.
- WHERE 5/8\"/>
- PROVIDE 3/8\"/>
- AT PARTITIONS WHERE 5/8\"/>

