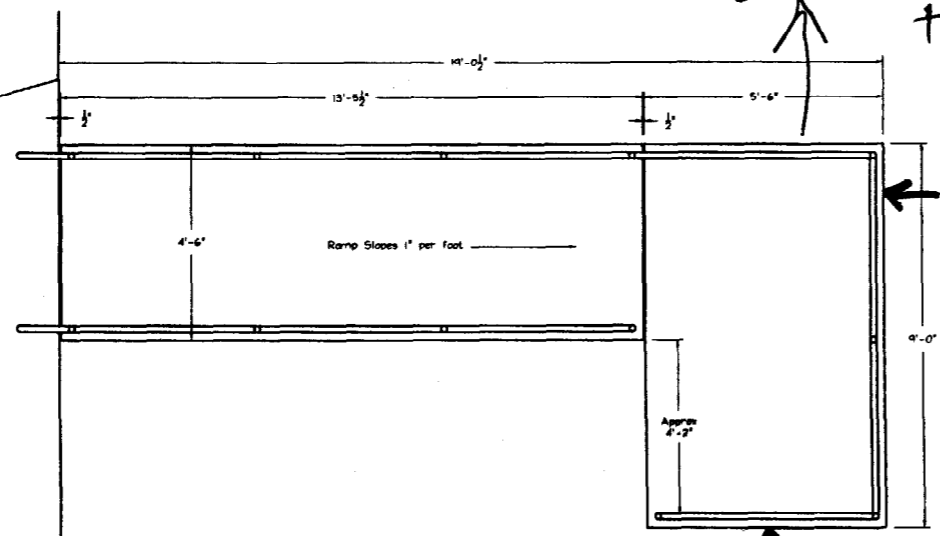


300ft AT LEAST
to REAR

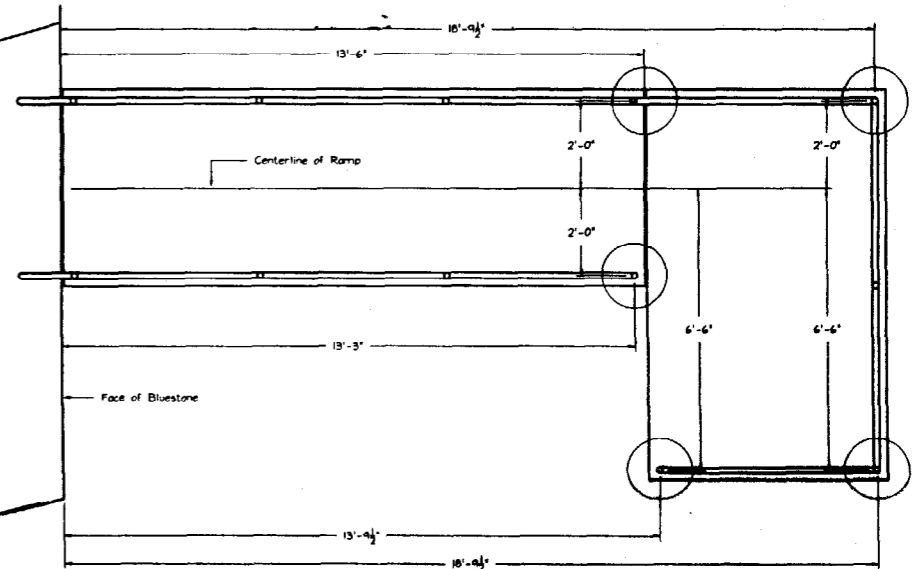
Existing Bldg



Plan View

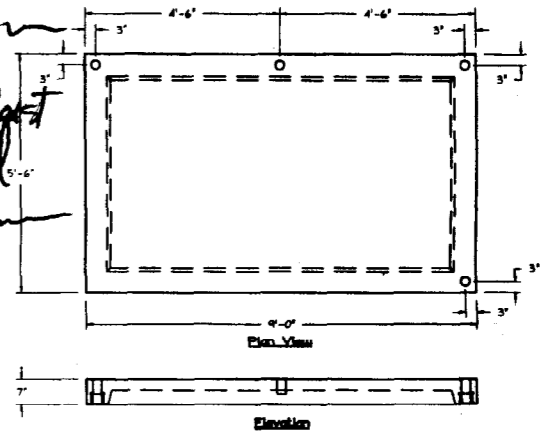
48' TO PARKING LOT
(Which is the property line per Greg Stone 9/10/03)

64' to Street
Congress St

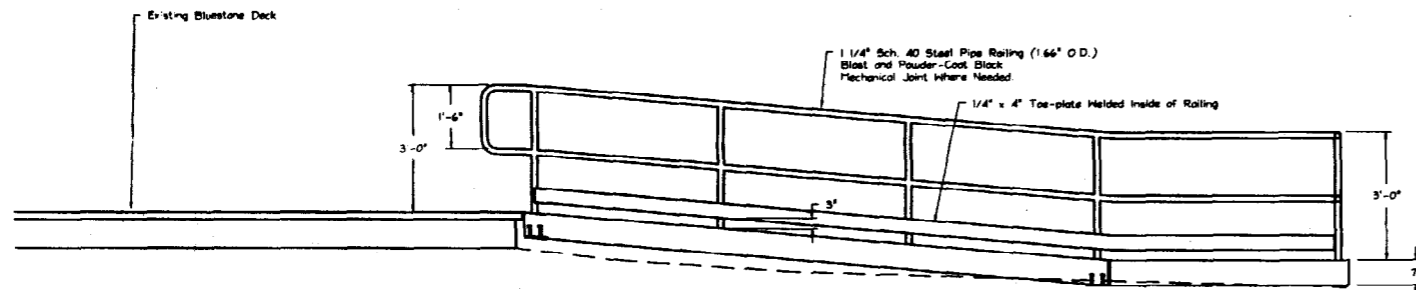


Plan View Showing Pier Locations. Tops of Piers Must be Lower Than 20 1/2" Below Top of Bluestone

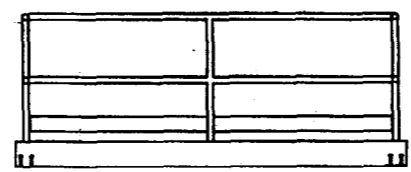
R-5 Zone
FRONT: 20' req - 64' shown
REAR: 20' req - 300' at least stated
SIDE: 8' req - 48' shown



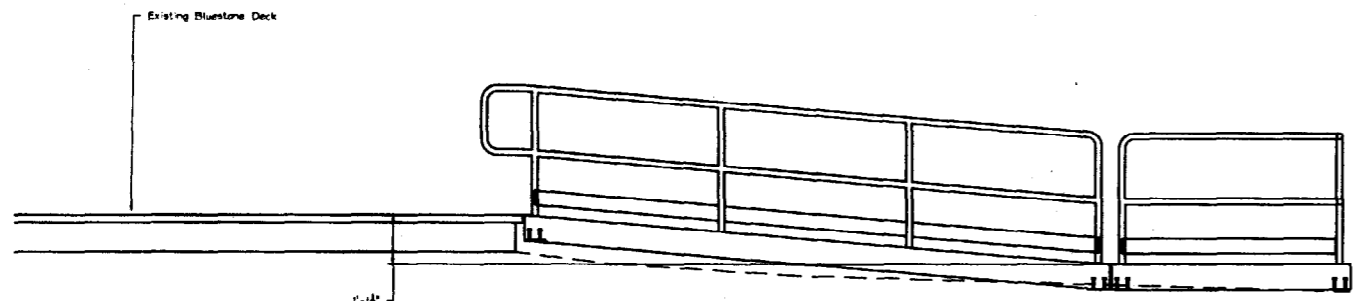
Precast Platform Section



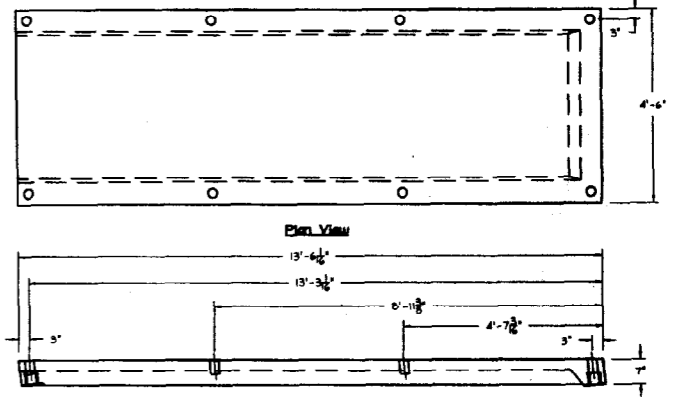
Front Elevation Showing For Railings



End Elevation



Front Elevation Showing Near Railings



Precast Ramp Section

- NOTES:
- 5000 P.S.I. concrete @ 28 days.
 - Grade 60 reinforcing.
 - Black powder-coated steel pipe railings.
 - Lower section of ramp and platform are set on piers installed by others. Upper end of ramp is set on steel clip angles fasted to concrete wall.

Rev.	Revision	Date
Proposed Handicap Ramp		
St. Patrick's Church 1342 Congress Street Portland, Maine		
AMERICAN CONCRETE INDUSTRIES 1022 Minot Ave. Auburn, ME 04210-3798 207-784-1366 800-636-9000		Drawn by JCS
Date June 30, 2003		Scale 1/2" = 1'-0"
Filename St. Patrick's Church.dwg		Sheet 1 of 1

Front Elevation