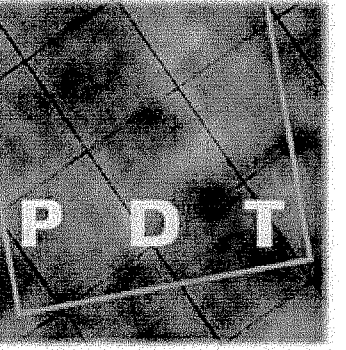


9/23/2013 10:51:42 AM N:\Projects\2012\12064 - Eyecare Medical Group-Addition and Renovation\00 Drawing Files\12064\_M.rvt



**PDT ARCHITECTS**  
 49 DARTMOUTH STREET  
 PORTLAND, MAINE 04101  
 207-775-1059  
 www.pdtarch.com

**Allied Engineering**  
 Structural Mechanical Electrical Consulting  
 160 Veranda Street  
 Portland, Maine 04103  
 Tel: 207.253.2500  
 Fax: 207.253.1546  
 Web: www.allied-eng.com

ALLIED PROJECT No.:  
 12084  
 CAD FILE:

COPYRIGHT 2012  
 PDT Architects  
 Reuse or reproduction of the  
 contents of this document is not  
 permitted without written  
 permission of PDT Architects.

**E.M.G. - PHASE 2 ADDITION & RENOVATION**  
 53 Sewall Street, Portland, ME 04102

PDT JOB NO.  
 12084

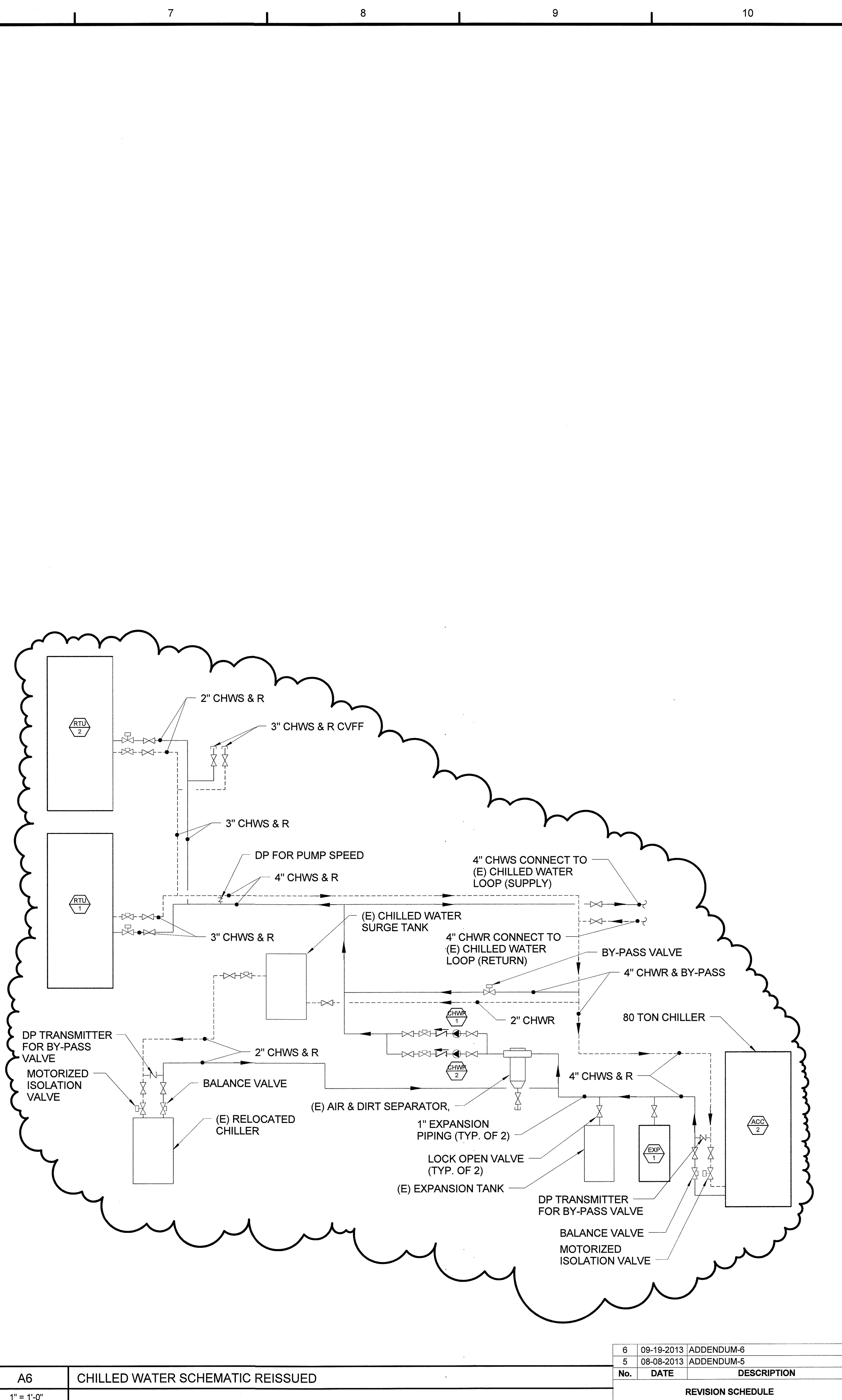
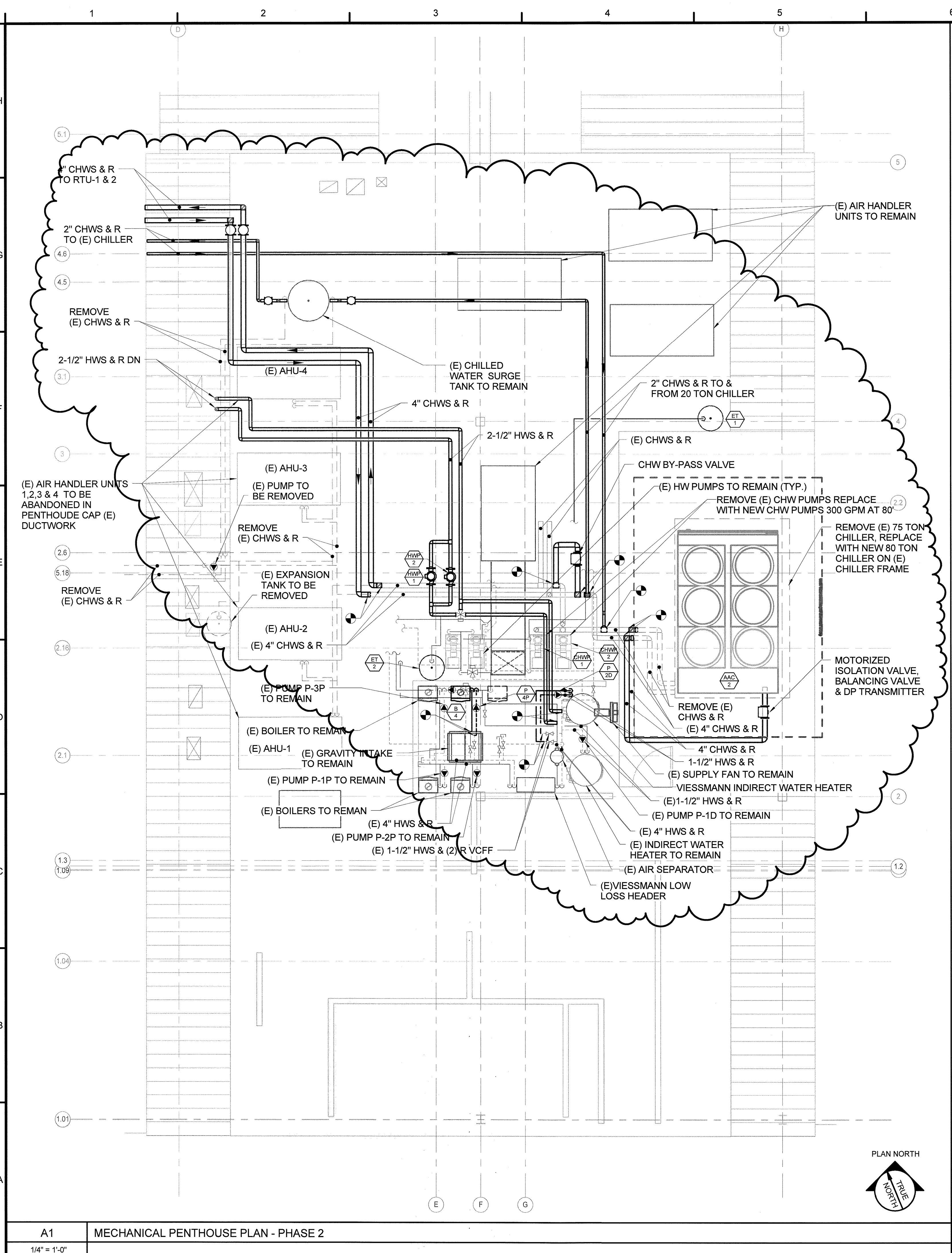
DRWN. CHK  
 Checker

SCALE:  
 As indicated

ISSUE:  
 JULY 11, 2013

TITLE  
 MECHANICAL  
 PENTHOUSE  
 PART PLAN

SHEET  
**MH400**



A1	MECHANICAL PENTHOUSE PLAN - PHASE 2
1/4" = 1'-0"	

A6	CHILLED WATER SCHEMATIC REISSUED
1" = 1'-0"	

No.	DATE	DESCRIPTION
6	09-19-2013	ADDENDUM-6
5	08-08-2013	ADDENDUM-5

REVISION SCHEDULE