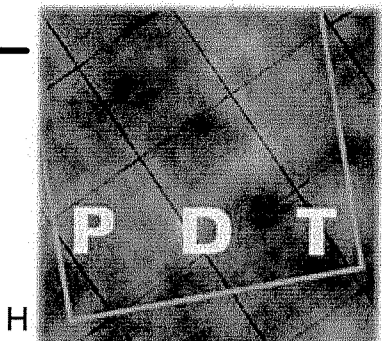


9/23/2013 10:53:30 AM N:\Projects\2012\12064 - Eyecare Medical Group-Addition and Renovation\00 Drawing Files\12064_M.rvt



PDT ARCHITECTS
 48 DARTMOUTH STREET
 PORTLAND, MAINE 04101
 207-775-1059
 www.pdtarch.com



Allied Engineering
 Structural Mechanical Electrical Commissioning
 160 Veranda Street
 Portland, Maine 04103
 Tel: 207.221.2268
 Fax: 207.221.2268
 Web: www.allied-eng.com

ALLIED PROJECT No.:
 12064
 CAD FILE:

COPYRIGHT 2012
 PDT Architects
 Reuse or reproduction of the
 contents of this document is not
 permitted without written
 permission of PDT Architects.

E.M.G. - PHASE 2 ADDITION & RENOVATION
 53 Sewall Street, Portland, ME 04102

PDT JOB NO.
 12084

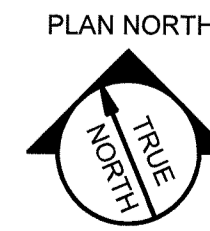
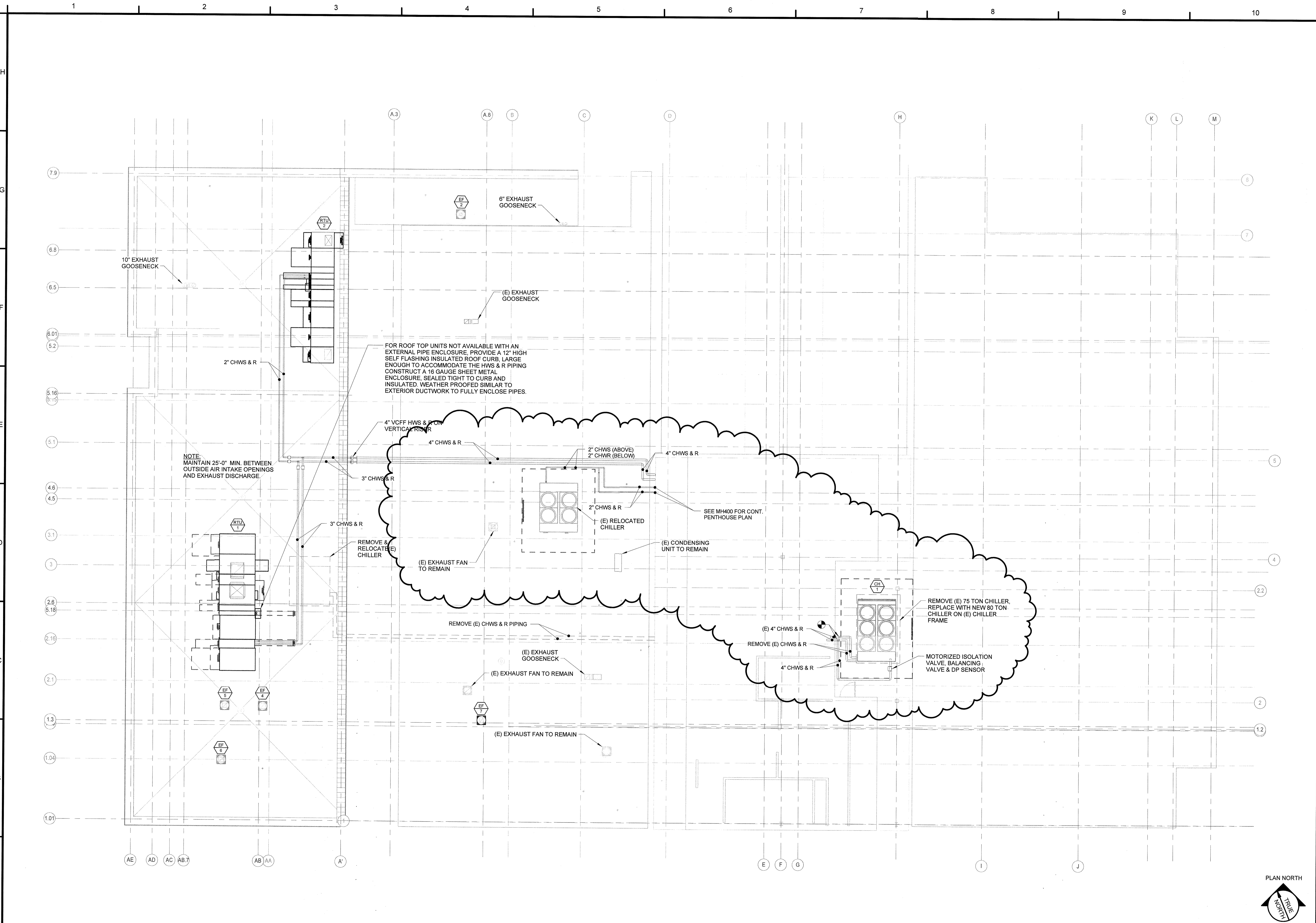
DRWN. CHK
 Checker

SCALE:
 1/8" = 1'-0"

ISSUE:
 JULY 11, 2013

TITLE
 MECHANICAL
 ROOF PLAN -
 PHASE 2

SHEET
MH102



A1	MECHANICAL ROOF PLAN - PHASE 2	6	09-19-2013	ADDENDUM-6
		No.	DATE	DESCRIPTION
1/8" = 1'-0"		REVISION SCHEDULE		