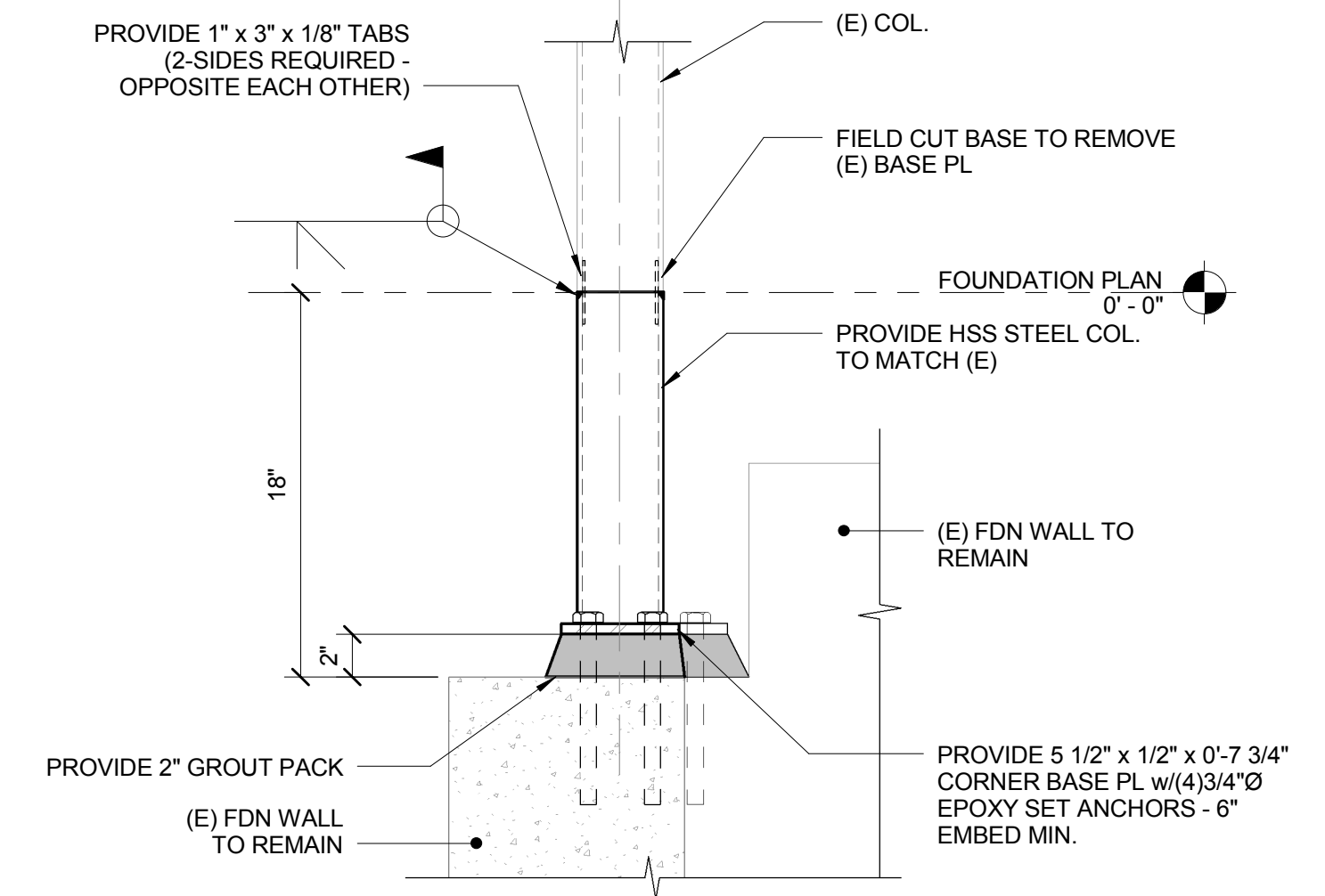
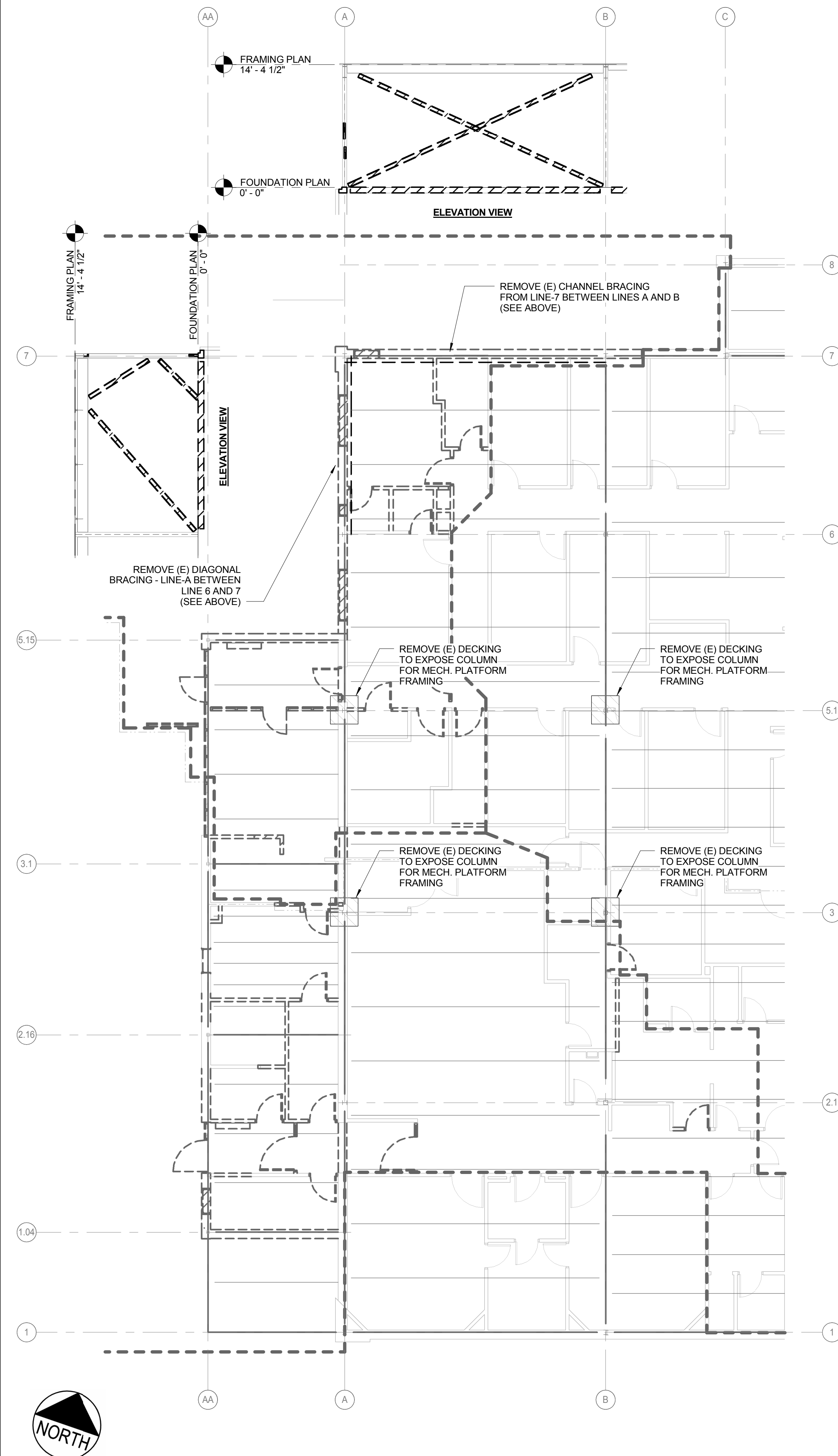
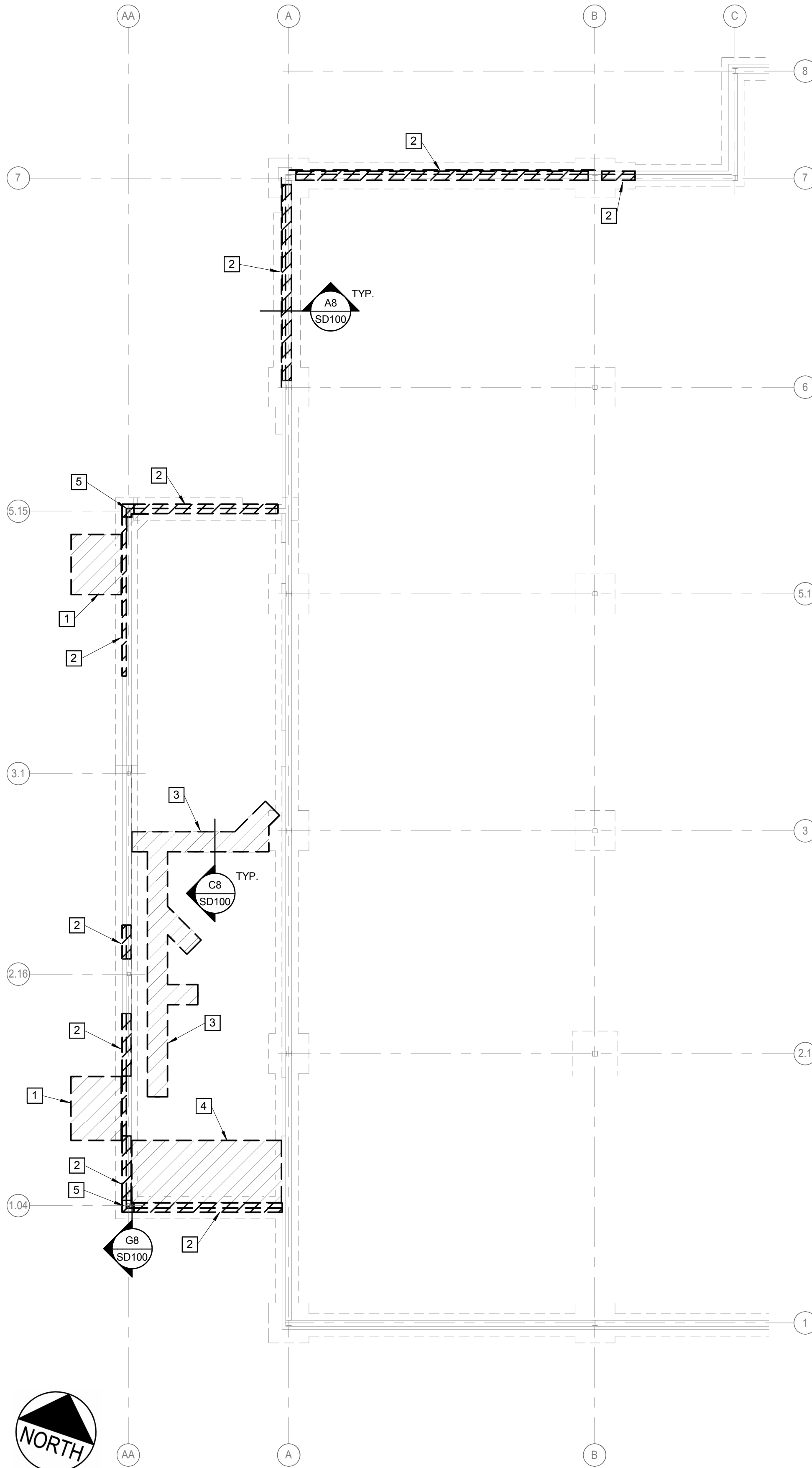
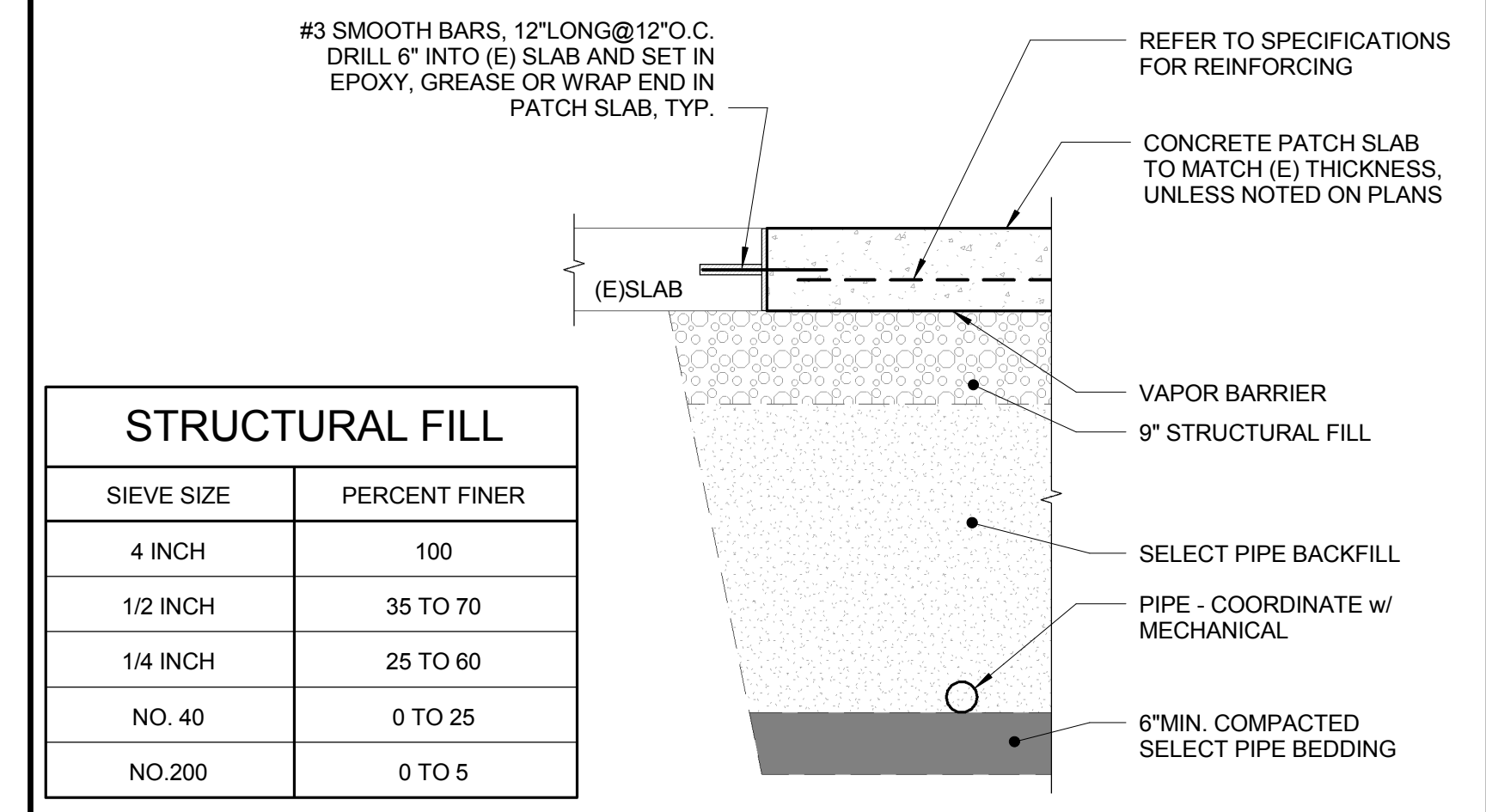


- 1 REMOVE EXISTING EXTERIOR CONCRETE PAD
- 2 REMOVE EXISTING TOP OF FOUNDATION WALL TO 8" BELOW TOP OF SLAB
- 3 REMOVE EXISTING SLAB FOR UNDERSLAB UTILITIES - COORDINATE EXTENT OF DEMOLITION WITH PLUMBING DRAWINGS
- 4 REMOVE EXISTING SLAB - COORDINATE EXTENT WITH ARCHITECTURAL DRAWINGS
- 5 REMOVE EXISTING TOP OF FOUNDATION WALL TO 16" BELOW TOP OF SLAB AND REMOVE COLUMN BASE PLATE - PREP BASE OF COLUMN FOR COLUMN EXTENSION.



G8 TYPICAL HSS COLUMN EXTENSION DETAIL

1 1/2" = 1'-0"



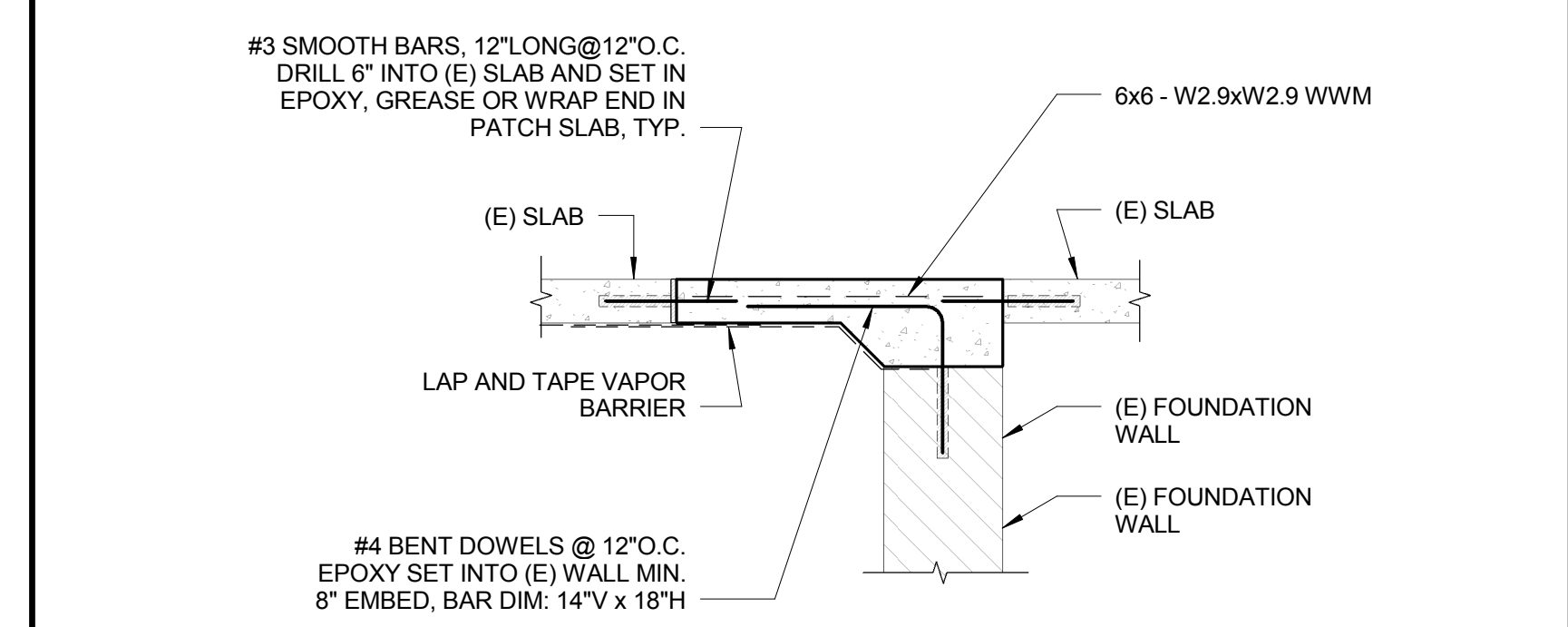
STRUCTURAL FILL	
SIEVE SIZE	PERCENT FINER
4 INCH	100
1/2 INCH	35 TO 70
1/4 INCH	25 TO 60
NO. 40	0 TO 25
NO. 200	0 TO 5

SELECT PIPE BACKFILL	
SIEVE SIZE	PERCENT FINER
3/8 INCH	80 TO 100
NO. 40	0 TO 5

SELECT PIPE BEDDING	
SIEVE SIZE	PERCENT FINER
1 INCH	100
3/4 INCH	90 TO 100
1/4 INCH	25 TO 55
NO. 4	0 TO 10
NO. 10	0 TO 5

C8 TYPICAL PIPE TRENCH/SLAB PATCH DETAIL

3/4" = 1'-0"



A8 SLAB TIE-IN DETAIL AT EXISTING WALL

3/4" = 1'-0"



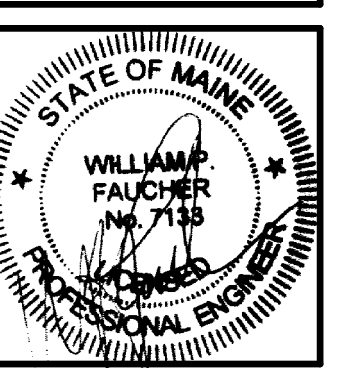
ARCHITECTS
49 DARTMOUTH STREET
PORTLAND, MAINE 04101
207-775-1059
www.pdtarchs.com

Allied Engineering
Structural Mechanical Electrical Commissioning
160 Veranda Street
Portland, Maine 04103
Tel: 207.221.2260
Fax: 207.221.2266
Web: www.allied-eng.com

ALLIED PROJECT No.:
12064
CAD FILE:
12064_S.rvt

COPYRIGHT 2012
PDT Architects
Reuse or reproduction of the
contents of this document is not
permitted without written
permission of PDT Architects.

E.M.G. - PHASE 2 ADDITION & RENOVATION
53 Sewall Street, Portland, ME 04102



PDT JOB NO.
12084

DRWN. CHK
WPF

SCALE:
As indicated

ISSUE:
JULY 11, 2013

TITLE
STRUCTURAL -
DEMOLITION
PLANS

SHEET
SD100

7/11/2013 8:09:01 AM N:\Projects\2012\12064 - Eyecare Medical Group-Addition and Renovation\00 Drawing Files\12064_S.rvt