



PDT ARCHITECTS
 49 DARTMOUTH STREET
 PORTLAND, MAINE 04101
 207-775-1059
 www.pdtarchs.com

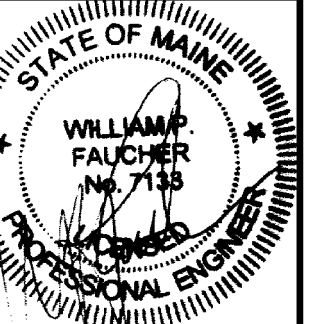


Allied Engineering
 Structural Mechanical Electrical Commissioning
 160 Veranda Street
 Portland, Maine 04103
 E: 207.221.2260
 F: 207.221.2266
 Web: www.allied-eng.com

ALLIED PROJECT No.:
 12064
 CAD FILE:
 12064_S.rvt

COPYRIGHT 2012
 PDT Architects
 Reuse or reproduction of the
 contents of this document is not
 permitted without written
 permission of PDT Architects.

E.M.G. - PHASE 2 ADDITION & RENOVATION
 53 Sewall Street, Portland, ME 04102



PDT JOB NO.
 12084

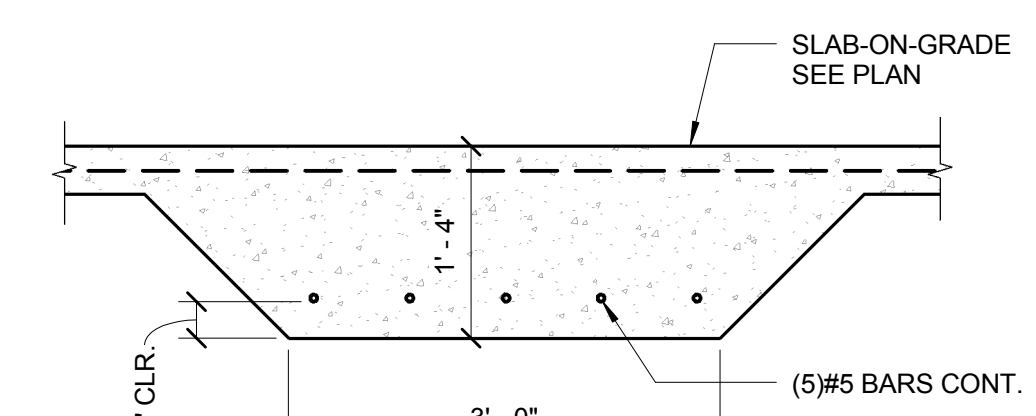
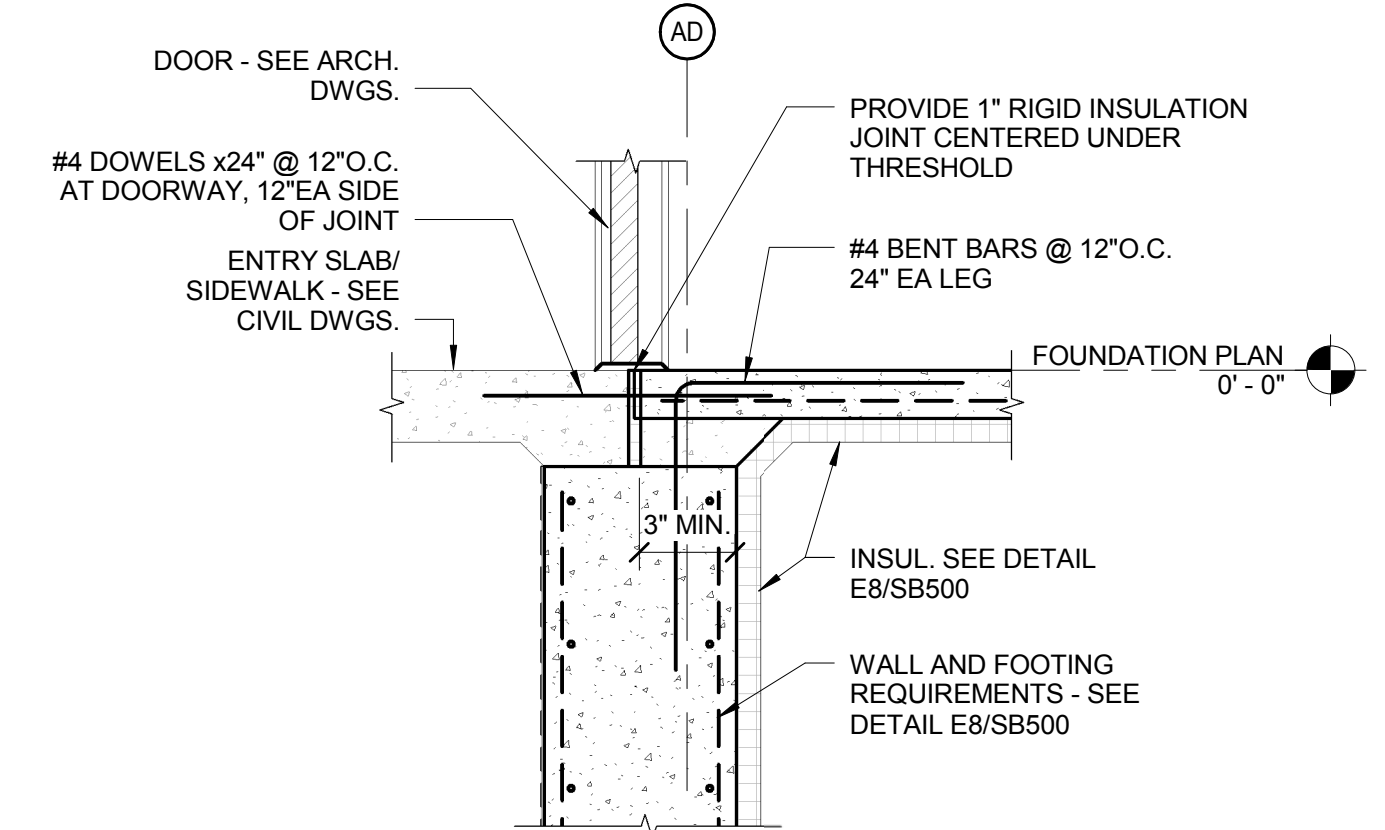
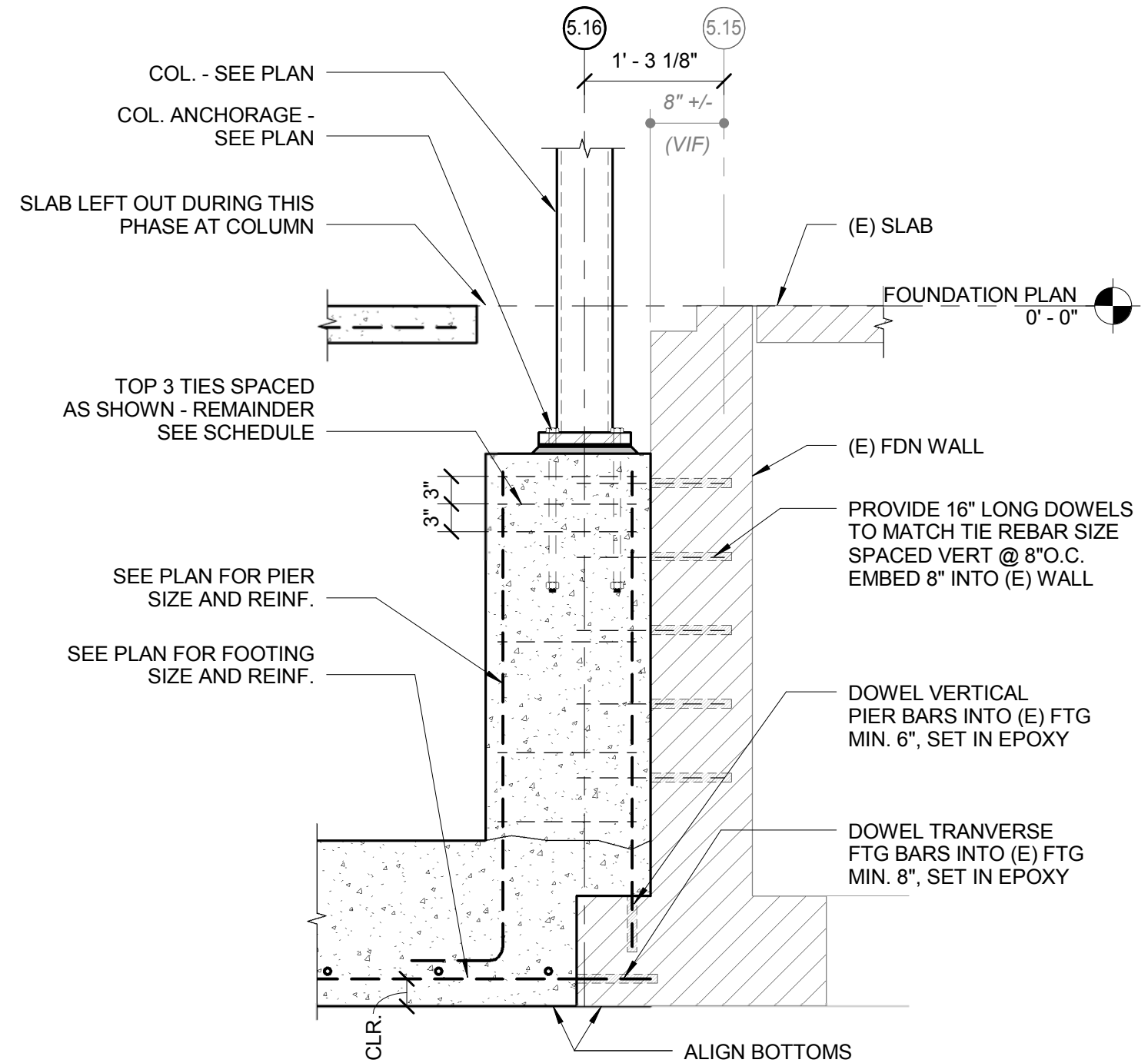
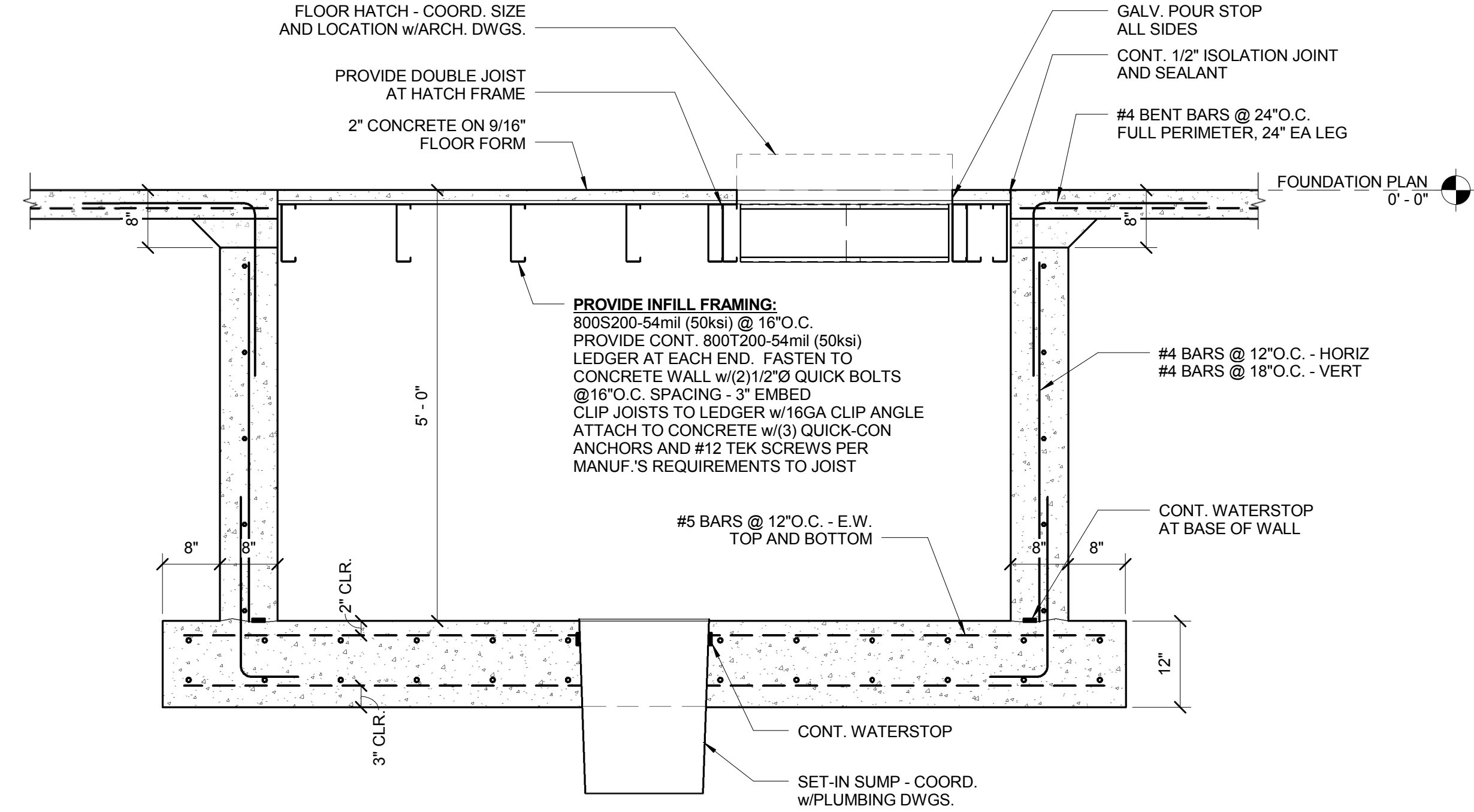
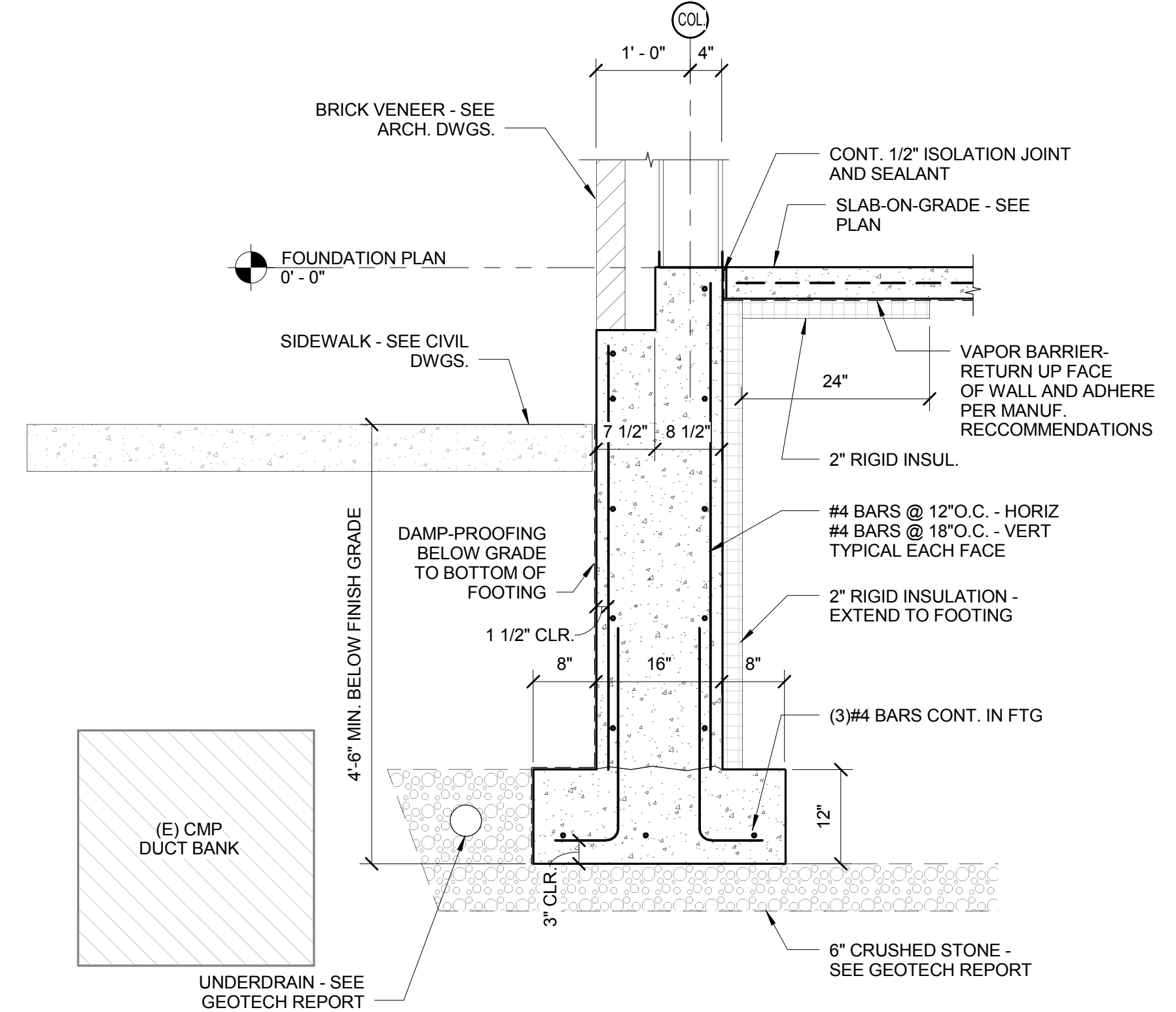
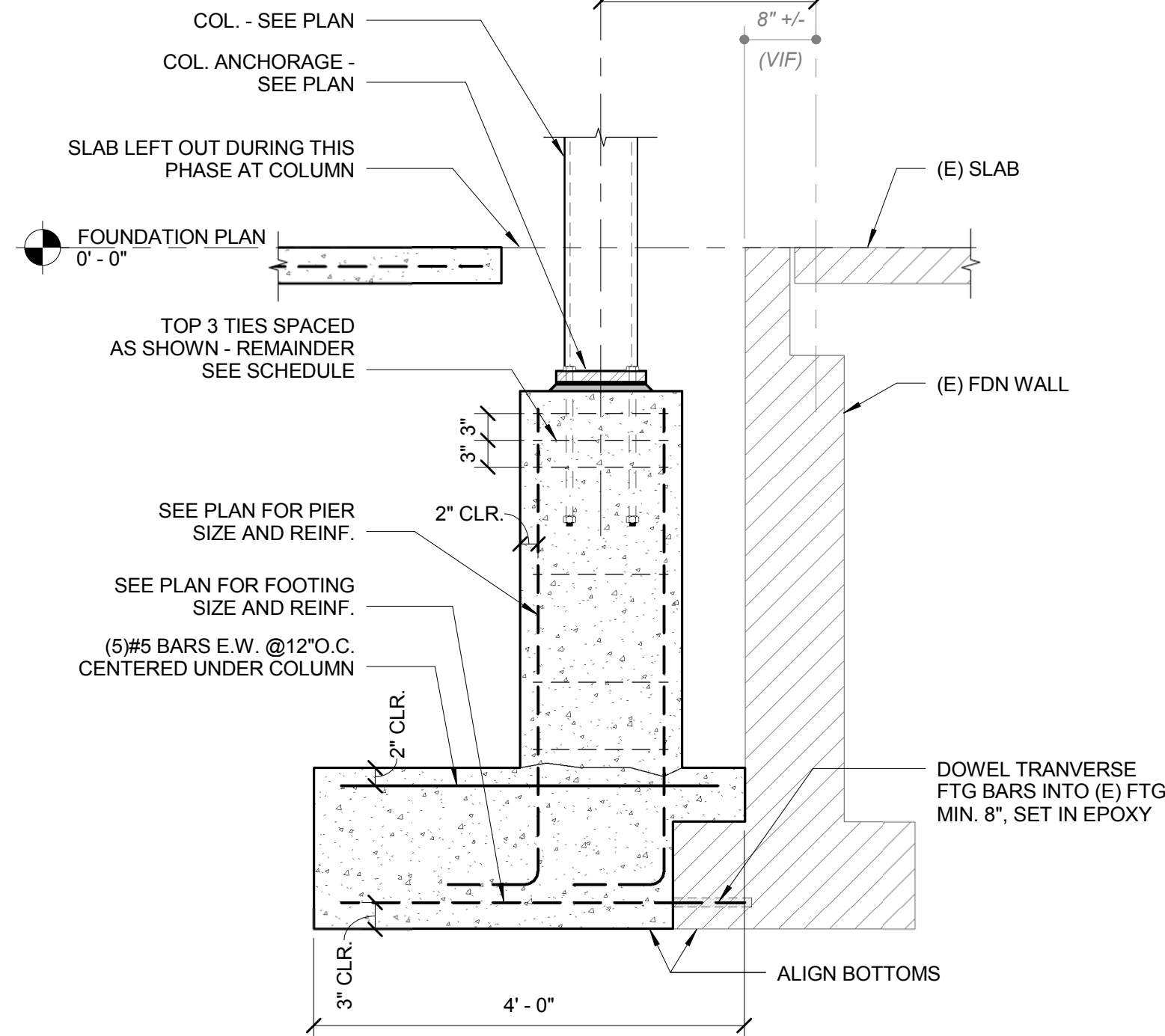
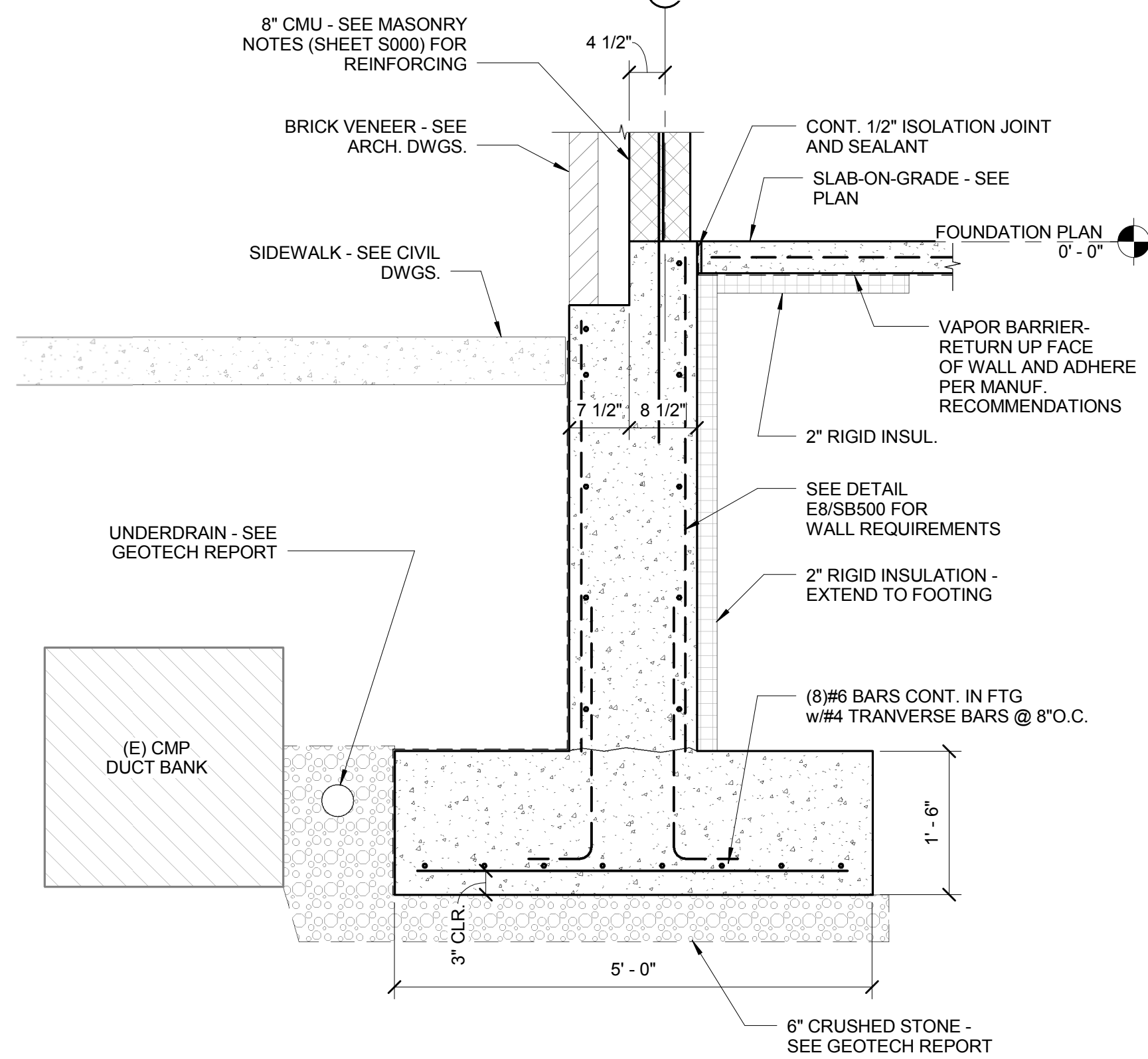
DRWN. CHK
 Checker

SCALE:
 3/4" = 1'-0"

ISSUE: SITE AND
 FOUNDATION
 PACKAGE
 JUNE 13, 2013

TITLE
 STRUCTURAL -
 FOUNDATION
 DETAILS

SHEET
SB500



6/13/2013 11:54:13 AM N:\Projects\2012\12064 - Eyecare Medical Group-Addition and Renovation\00 Drawing Files\12064_S.rvt