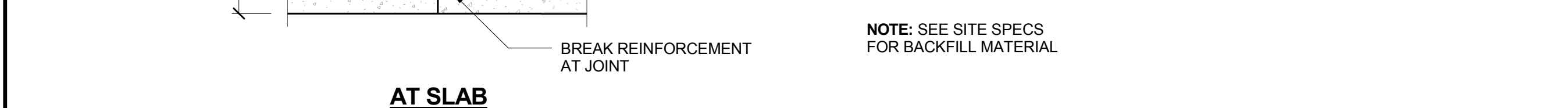


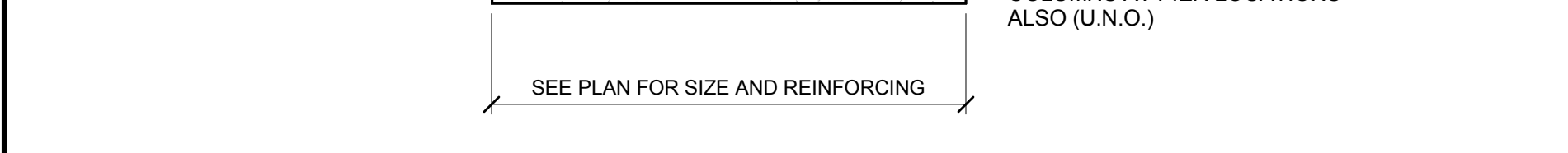
H9 TYPICAL CONTROL JOINT IN SLAB DETAIL



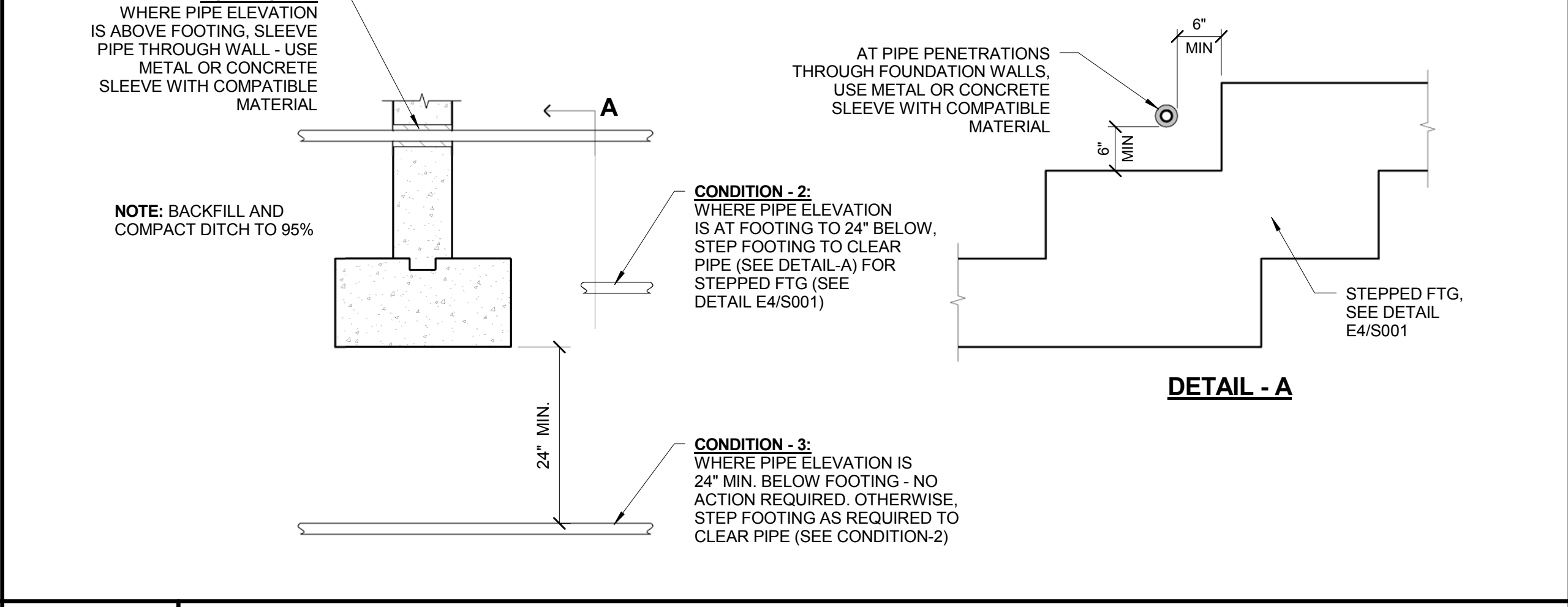
G4 TYPICAL WALL AND SLAB CONSTRUCTION JOINT DETAIL



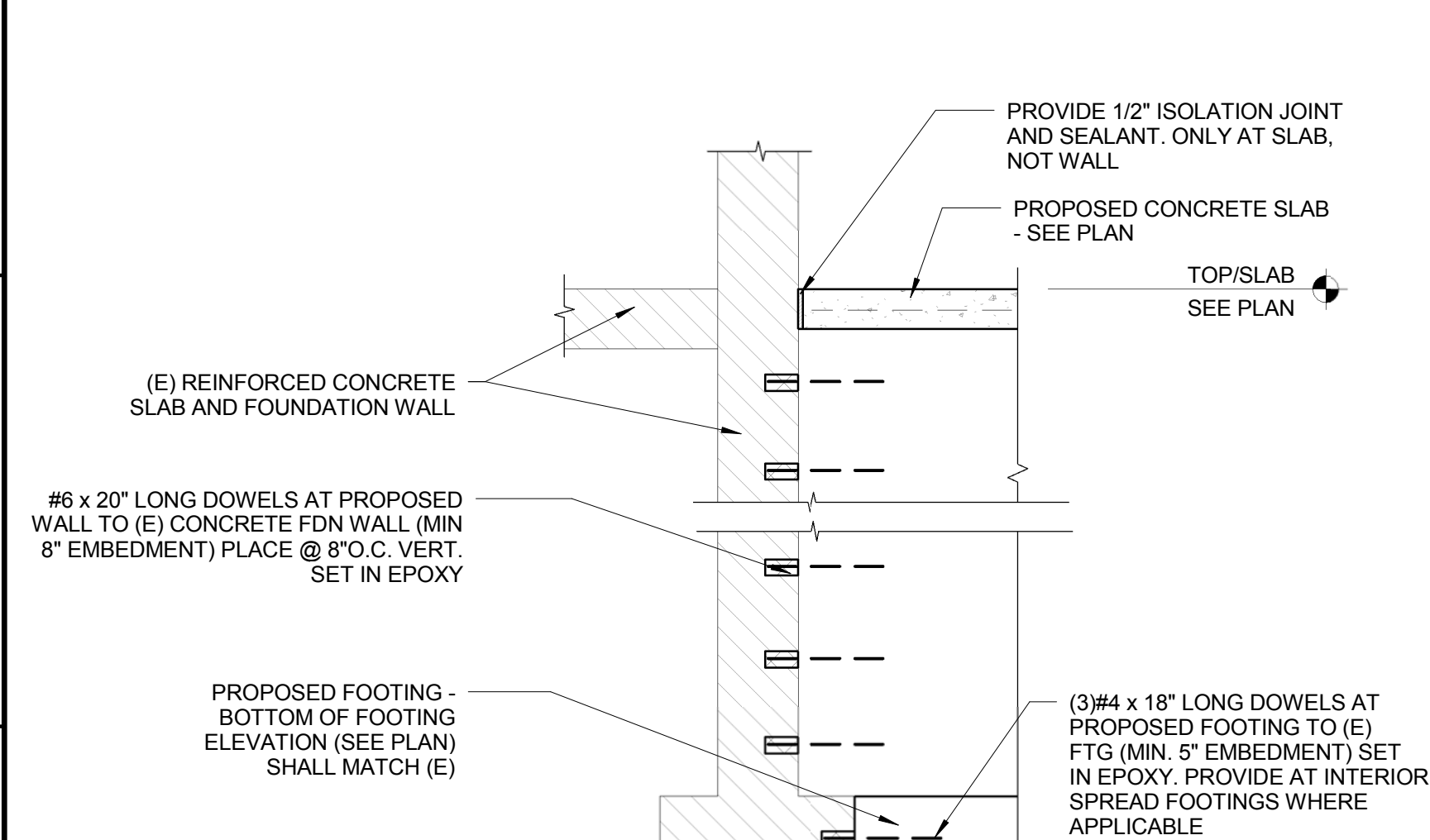
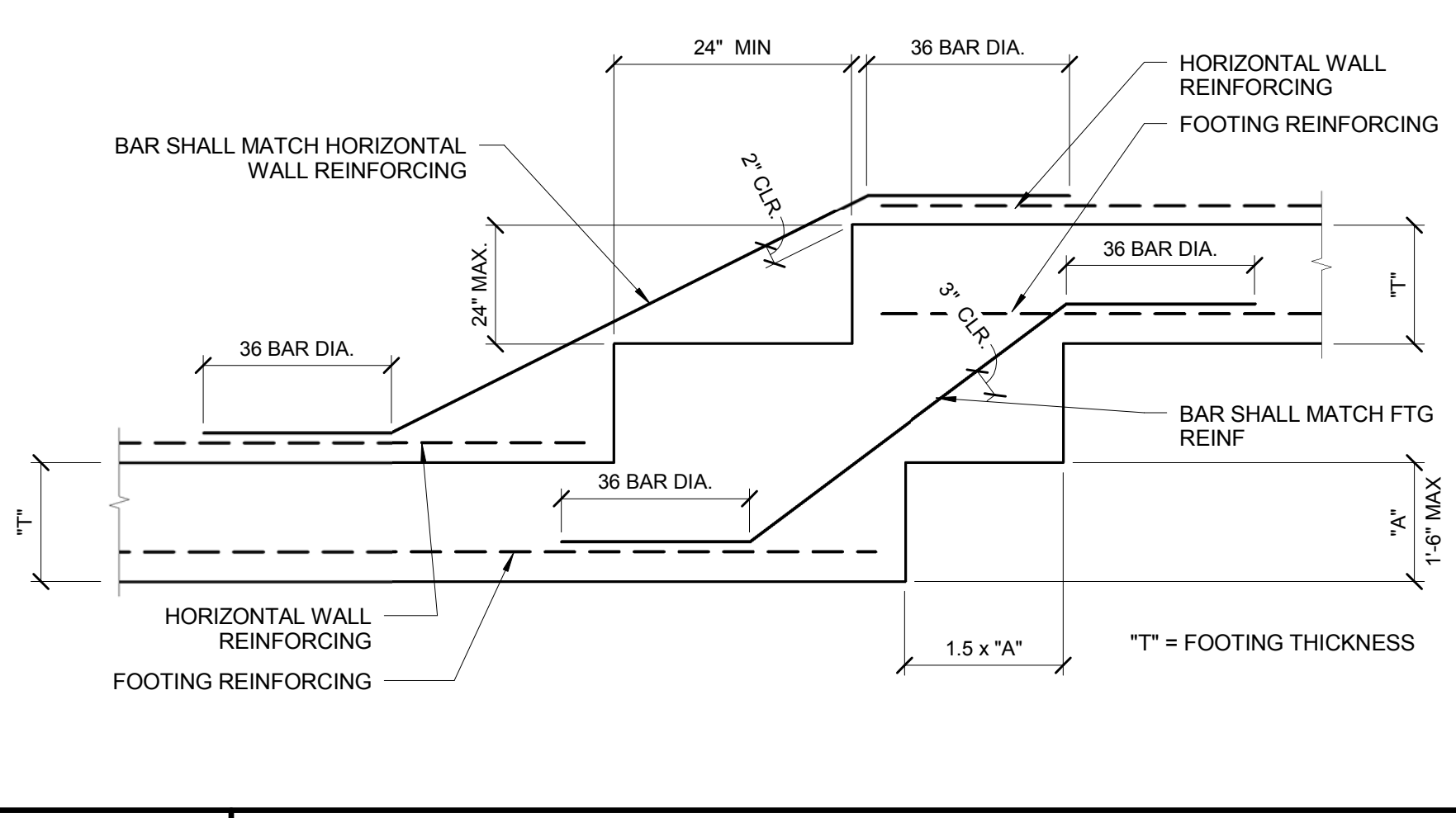
G1 TYPICAL INTERIOR SPREAD FOOTING DETAIL



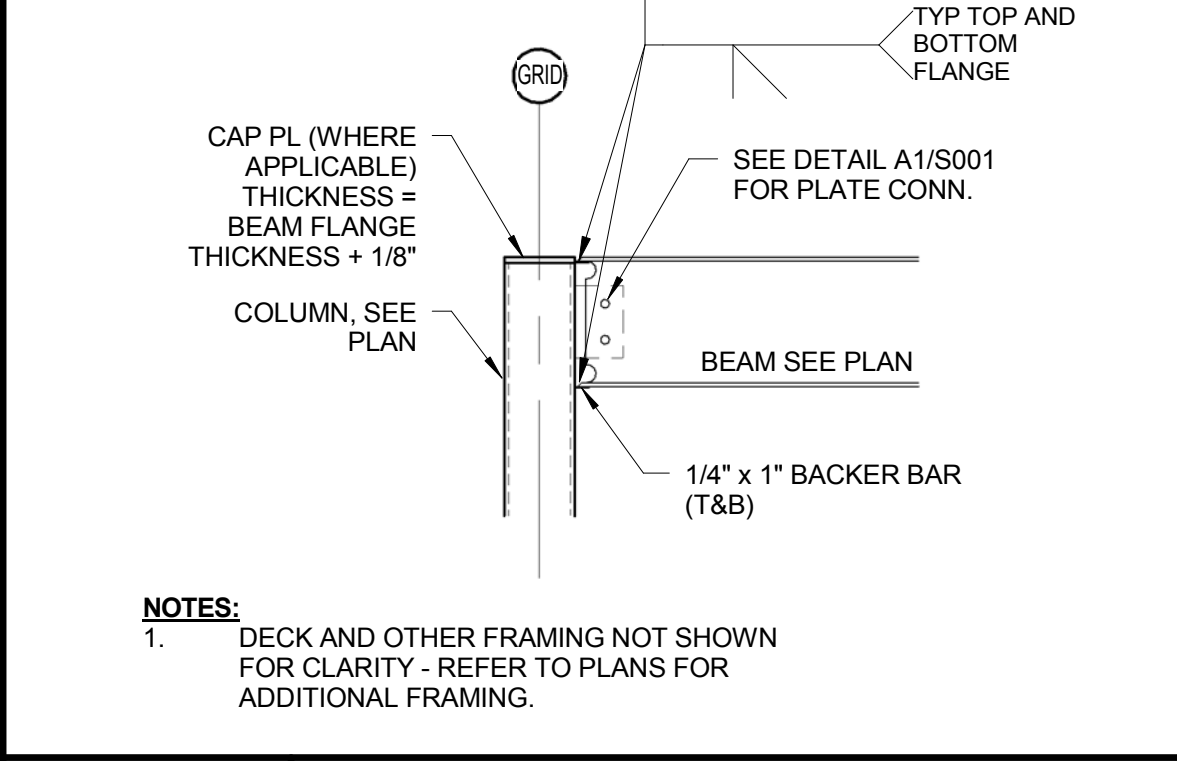
E7 TYPICAL PIPE AT FOOTING DETAIL



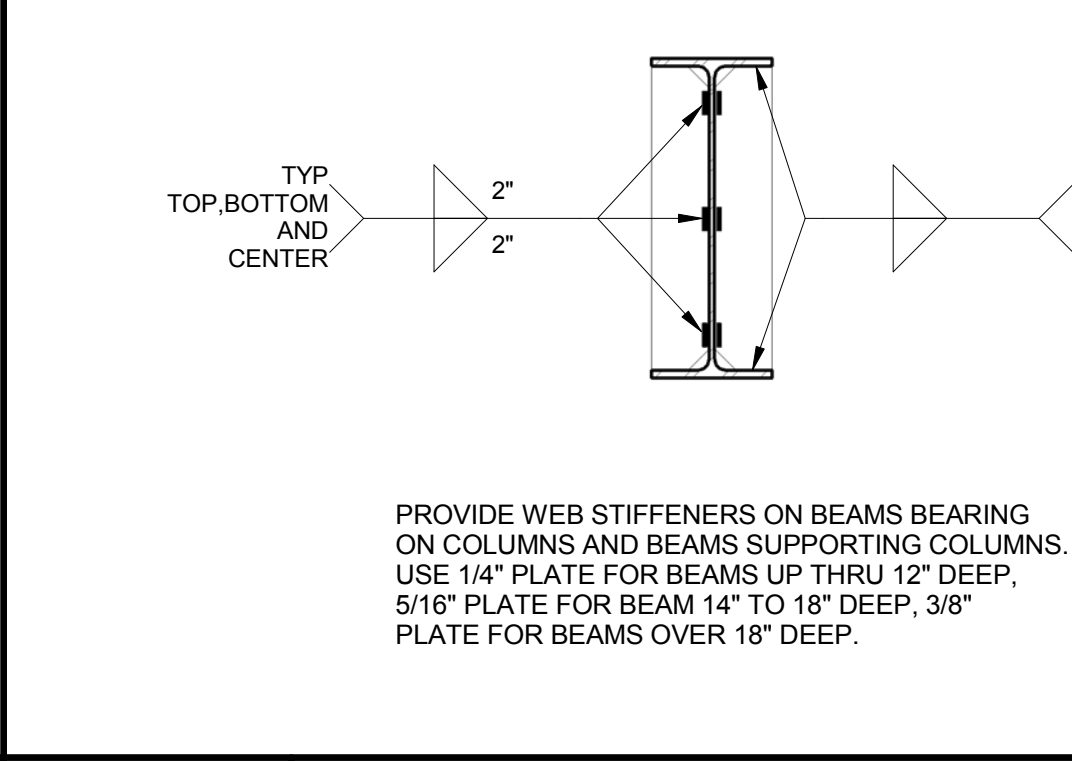
E4 TYPICAL STEPPED FOOTING DETAIL



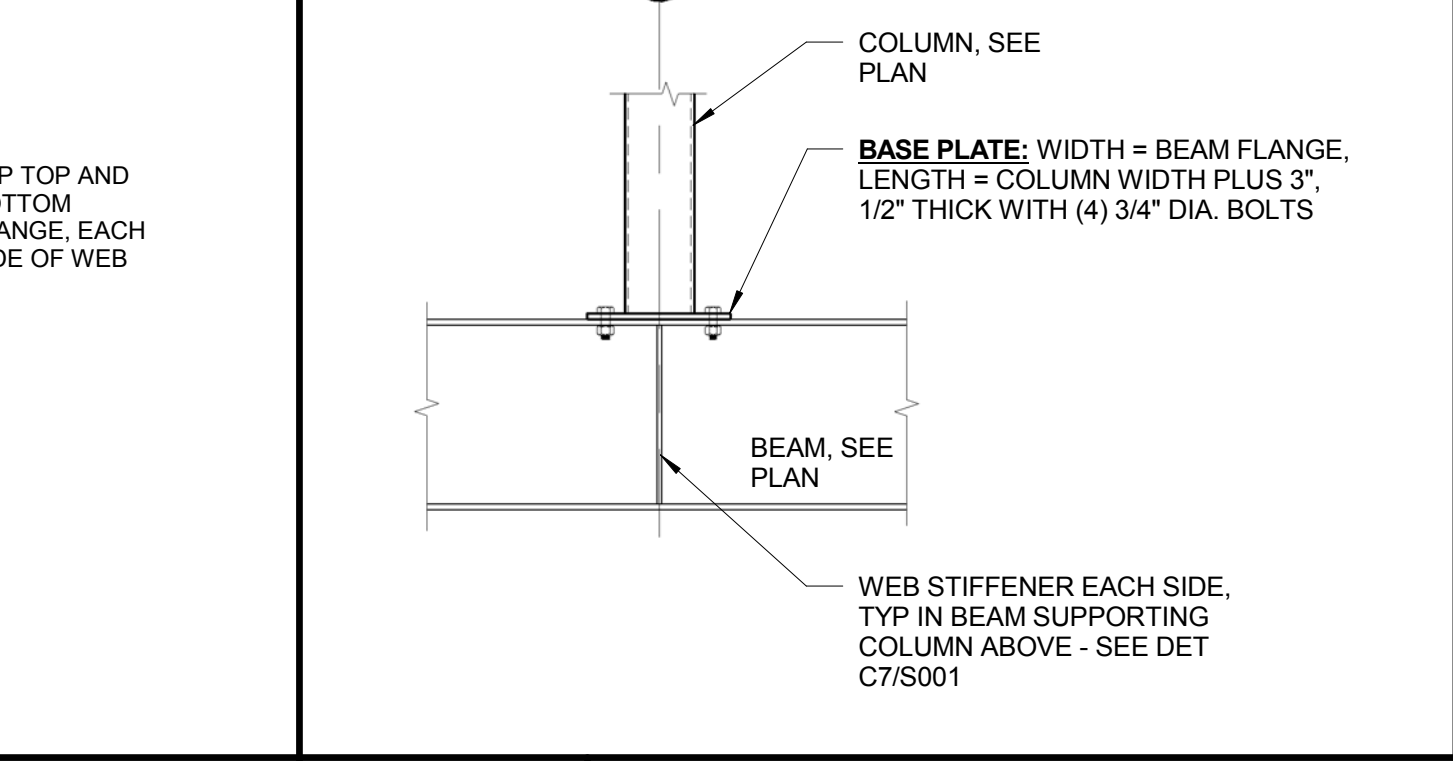
C5 TYPICAL MOMENT CONNECTION DETAIL



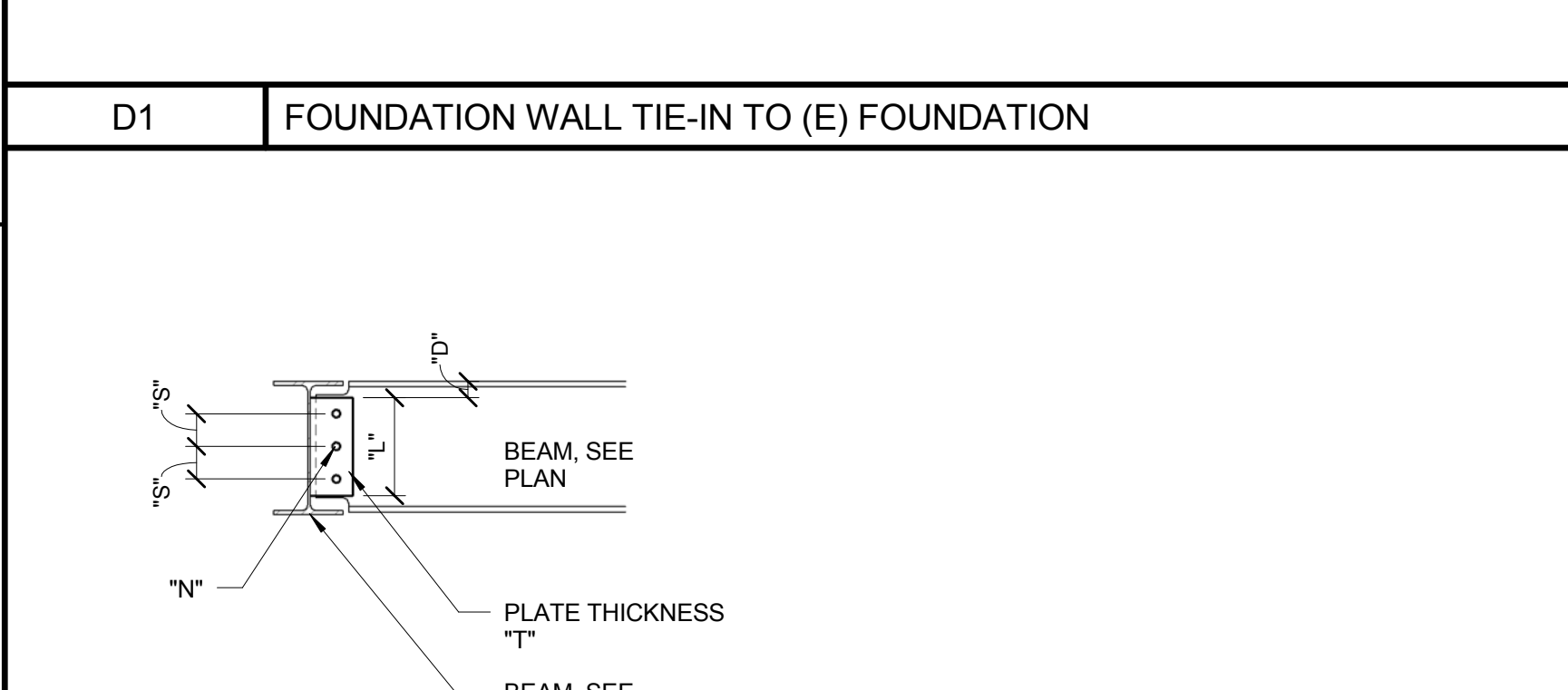
C7 TYPICAL WEB STIFFENER DETAIL



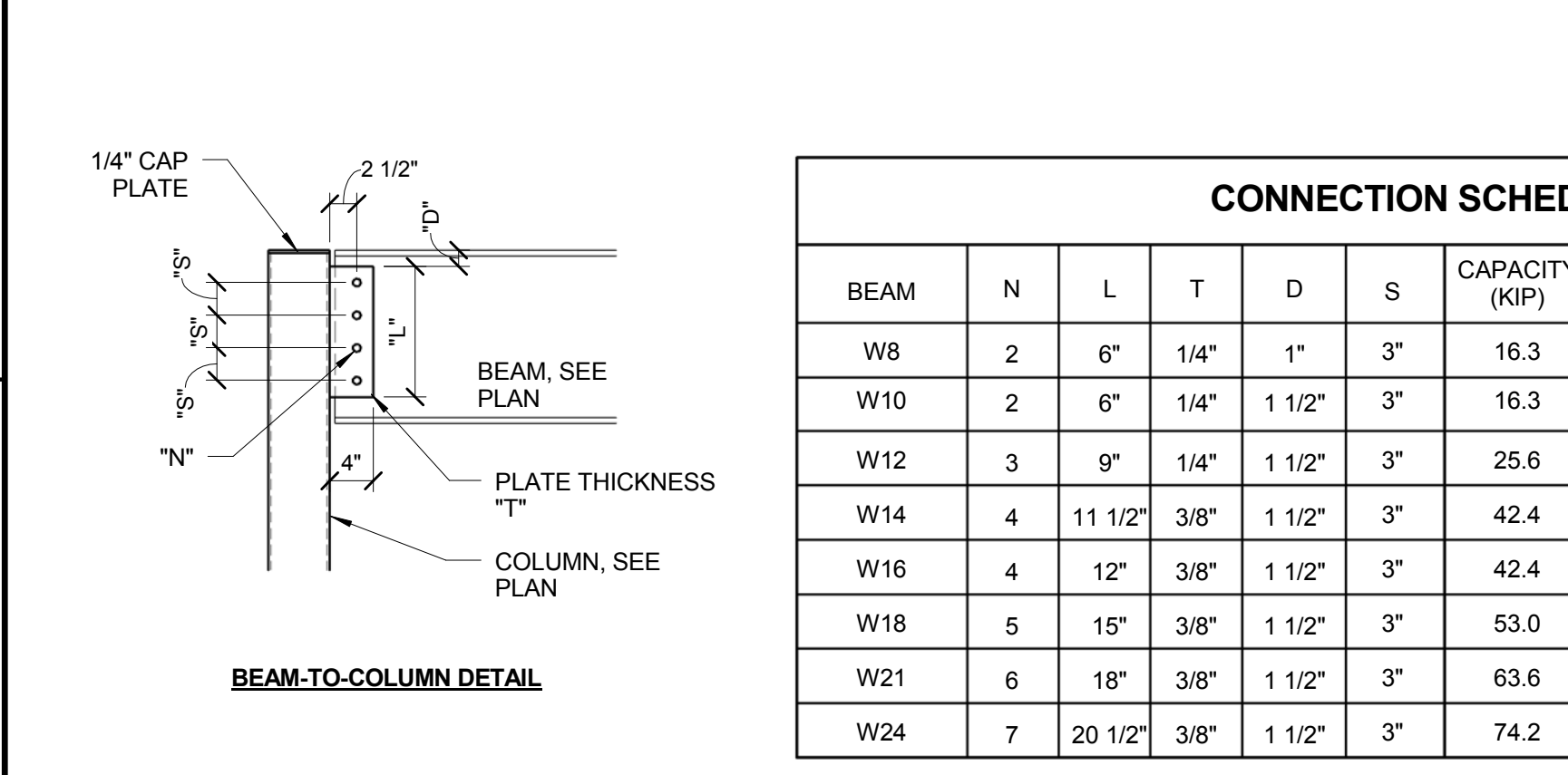
C9 TYPICAL COLUMN ABOVE DETAIL



D1 FOUNDATION WALL TIE-IN TO (E) FOUNDATION



A1 TYPICAL CONNECTION DETAIL

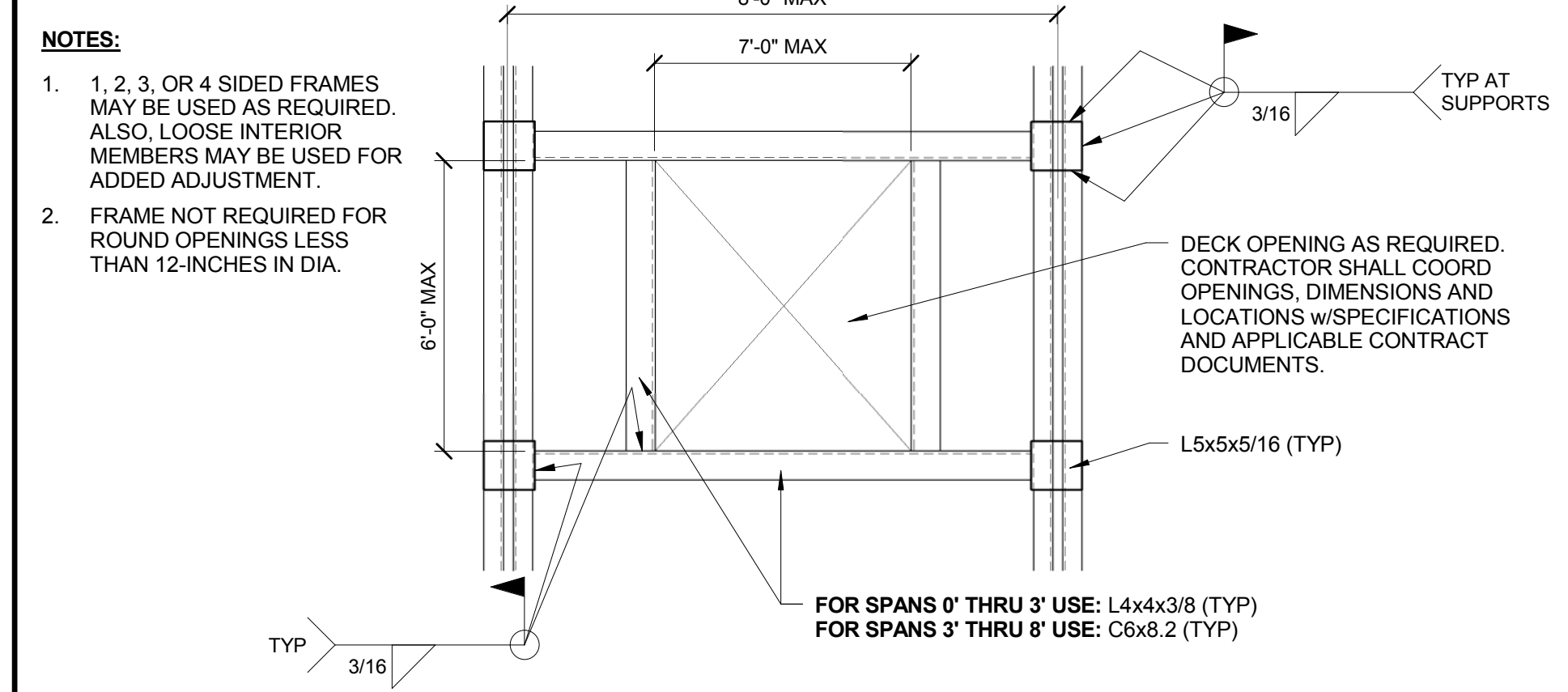


CONNECTION SCHEDULE						
BEAM	N	L	T	D	S	CAPACITY (KIP)
W8	2	6"	1/4"	1"	3"	16.3
W10	2	6"	1/4"	1 1/2"	3"	16.3
W12	3	9"	1/4"	1 1/2"	3"	25.6
W14	4	11 1/2"	3/8"	1 1/2"	3"	42.4
W16	4	12"	3/8"	1 1/2"	3"	42.4
W18	5	15"	3/8"	1 1/2"	3"	53.0
W21	6	18"	3/8"	1 1/2"	3"	63.6
W24	7	20 1/2"	3/8"	1 1/2"	3"	74.2

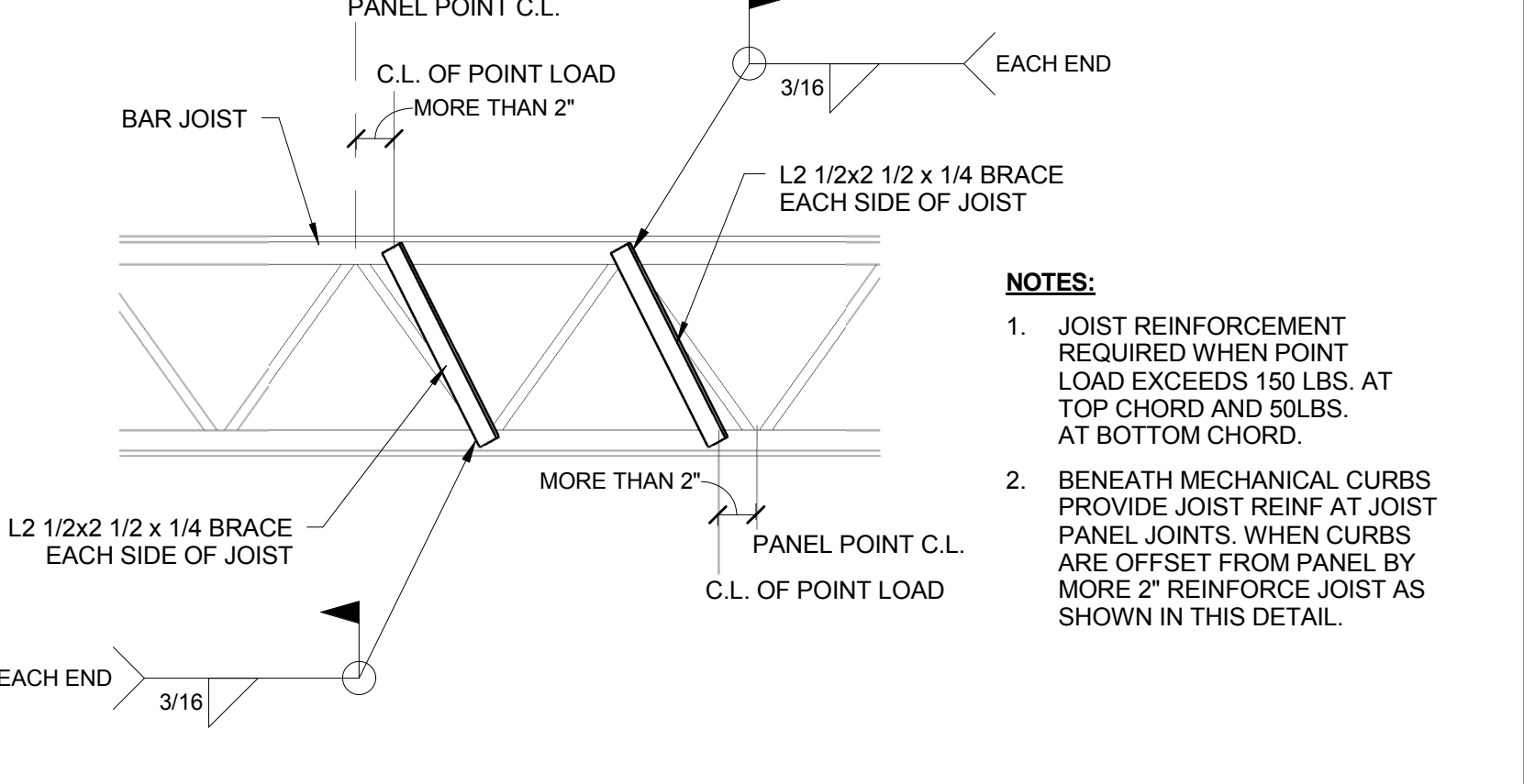
NOTES:

- BOLTS SHALL BE 3/4" DIA. A325N (U.N.O.)
- N = NUMBER OF BOLTS
- L = LENGTH OF PLATE
- T = THICKNESS OF PLATE
- D = DEPTH OF PLATE FROM TOP FLANGE OF BEAM
- S = BOLT SPACING
- SIMILAR AT CHANNEL SECTIONS OF SAME DEPTH

A5 TYPICAL FRAMED OPENING IN ROOF DECK



A8 TRUSS FIELD MOD. FOR POINT LOAD



6/13/2013 11:54:09 AM N:\Projects\2012\12064 - Eyecare Medical Group-Addition and Renovation\00 Drawing Files\12064_S.rvt