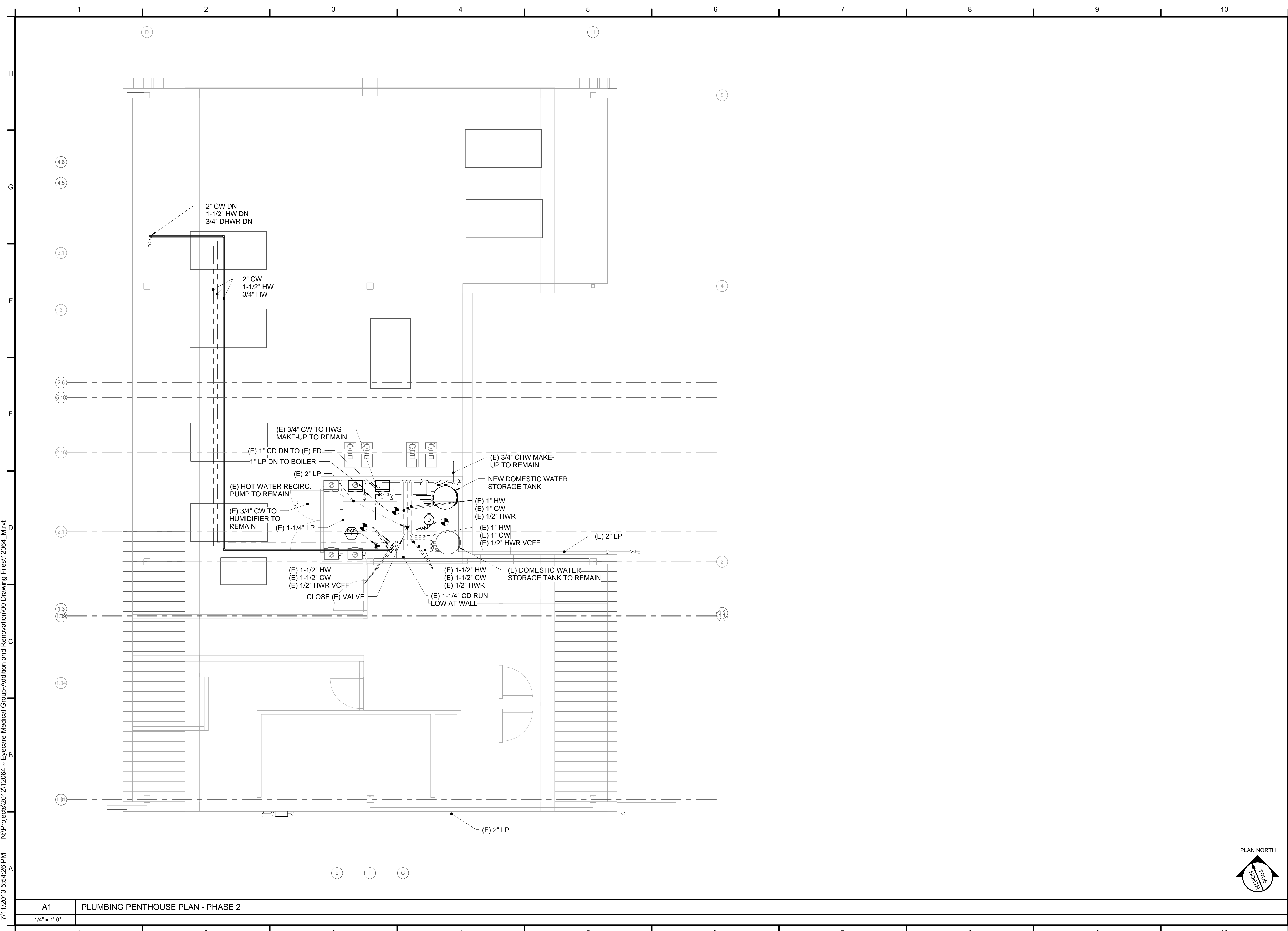


7/11/2013 5:54:26 PM N:\Projects\2012\12064 - Eyecare Medical Group-Addition and Renovation\00 Drawing Files\12064_M.rvt



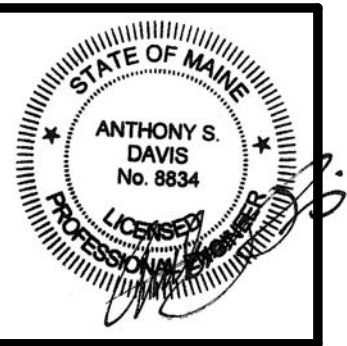
PDT ARCHITECTS
 48 DARTMOUTH STREET
 PORTLAND, MAINE 04101
 207-775-1059
 www.pdtarchs.com

Allied Engineering
 Structural Mechanical Electrical Commissioning
 160 Veranda Street
 Portland, Maine 04103
 T: 207.221.2260
 F: 207.221.2260
 Web: www.allied-eng.com

ALLIED PROJECT No.:
12064
CAD FILE:

COPYRIGHT 2012
PDT Architects
Reuse or reproduction of the
contents of this document is not
permitted without written
permission of PDT Architects.

E.M.G. - PHASE 2 ADDITION & RENOVATION
 53 Sewall Street, Portland, ME 04102



PDT JOB NO.
12084

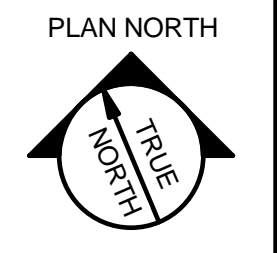
DRWN. CHK
Checker

SCALE:
1/4" = 1'-0"

ISSUE:
JULY 11, 2013

TITLE
PLUMBING
PENTHOUSE
PLAN - PHASE 2

SHEET
PL400



A1 PLUMBING PENTHOUSE PLAN - PHASE 2
 1/4" = 1'-0"