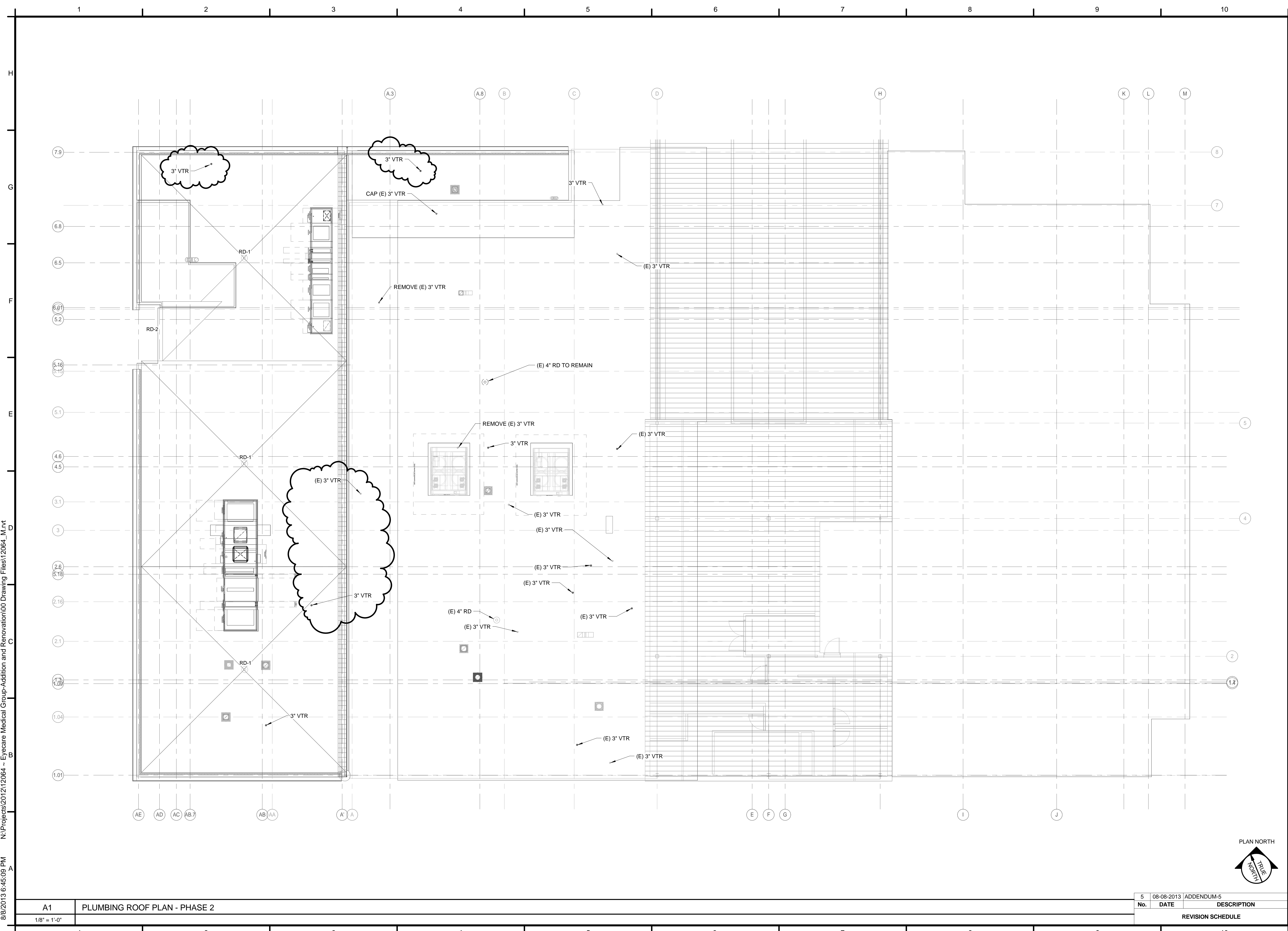


8/8/2013 6:45:09 PM N:\Projects\2012\12064 - Eyecare Medical Group-Addition and Renovation\00 Drawing Files\12064_M.rvt



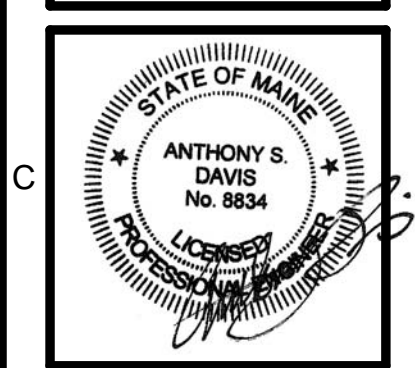
PDT ARCHITECTS
 48 DARTMOUTH STREET
 PORTLAND, MAINE 04101
 207-775-1059
 www.pdtarch.com

Allied Engineering
 Structural Mechanical Electrical Commissioning
 160 Veranda Street
 Portland, Maine 04103
 T: 207.221.2260
 F: 207.221.2260
 Web: www.allied-eng.com

ALLIED PROJECT No.: 12064
CAD FILE:

COPYRIGHT 2012 PDT Architects
Reuse or reproduction of the contents of this document is not permitted without written permission of PDT Architects.

E.M.G. - PHASE 2 ADDITION & RENOVATION
53 Sewall Street, Portland, ME 04102



PDT JOB NO. 12084

DRWN. CHK Checker

SCALE: 1/8" = 1'-0"

ISSUE: JULY 11, 2013

TITLE PLUMBING ROOF PLAN - PHASE 2

SHEET **PL104**

A1	PLUMBING ROOF PLAN - PHASE 2	5	08-08-2013	ADDENDUM-5
		No.	DATE	DESCRIPTION
1/8" = 1'-0"		REVISION SCHEDULE		