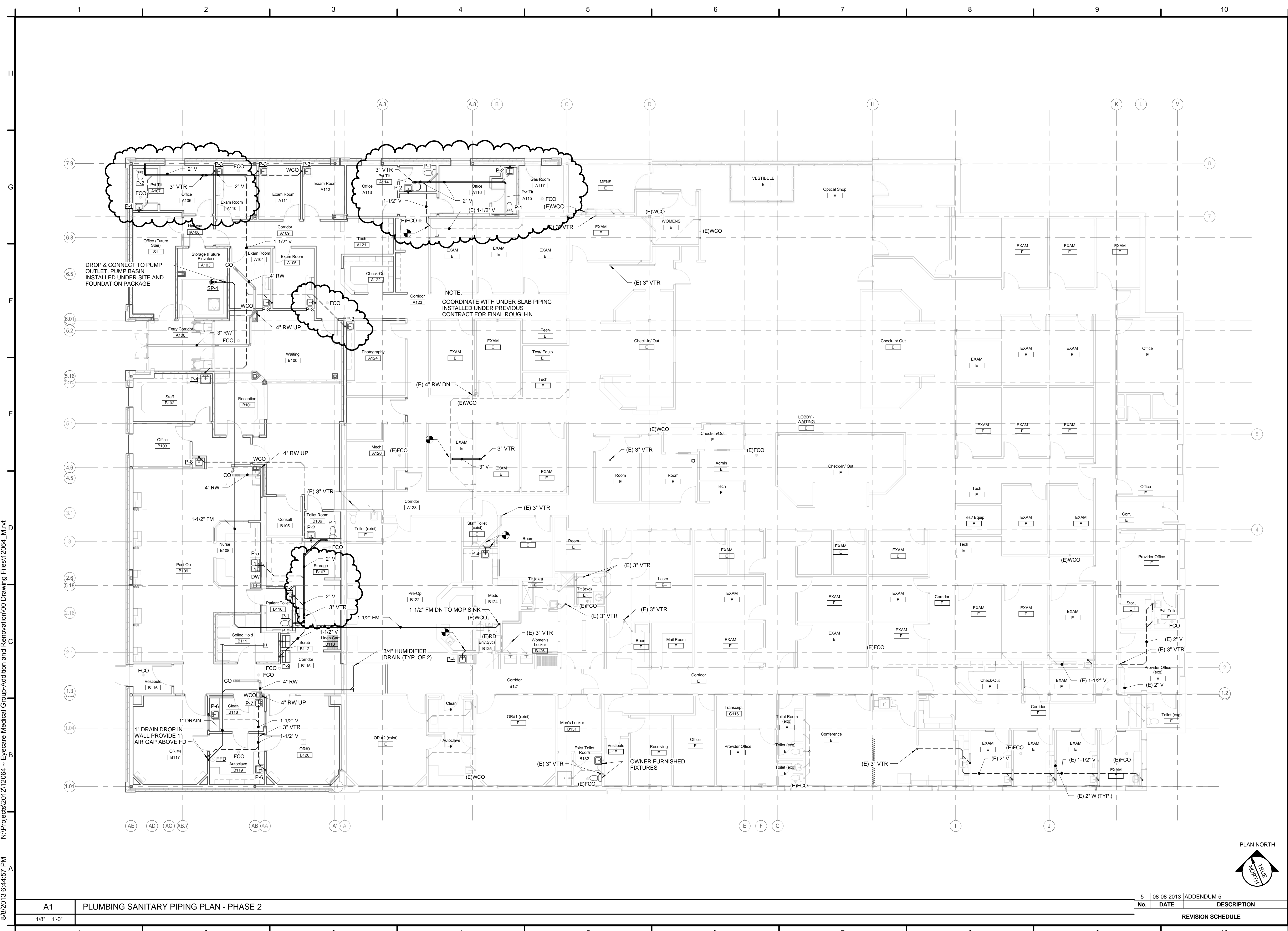
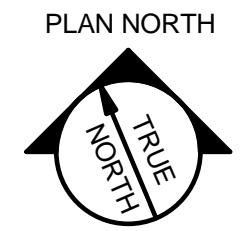


8/8/2013 6:44:57 PM N:\Projects\2012\12064 - Eyecare Medical Group-Addition and Renovation\00 Drawing Files\12064_M.rvt



NOTE:
COORDINATE WITH UNDER SLAB PIPING
INSTALLED UNDER PREVIOUS
CONTRACT FOR FINAL ROUGH-IN.

DROP & CONNECT TO PUMP
OUTLET. PUMP BASIN
INSTALLED UNDER SITE AND
FOUNDATION PACKAGE



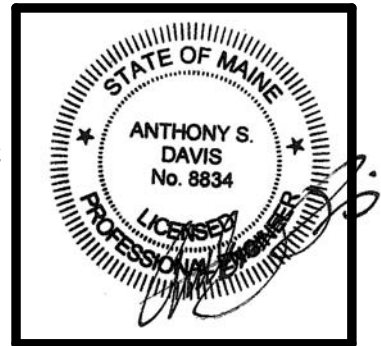
PDT ARCHITECTS
48 DARTMOUTH STREET
PORTLAND, MAINE 04101
207-775-1059
www.pdtarchs.com

Allied Engineering
Structural Mechanical Electrical Commissioning
160 Veranda Street
Portland, Maine 04103
Tel: 207.221.2260
Fax: 207.221.2266
Web: www.allied-eng.com

ALLIED PROJECT No.:
12064
CAD FILE:

COPYRIGHT 2012
PDT Architects
Reuse or reproduction of the
contents of this document is not
permitted without written
permission of PDT Architects.

E.M.G. - PHASE 2 ADDITION & RENOVATION
53 Sewall Street, Portland, ME 04102



PDT JOB NO.
12084

DRWN. CHK
Checker

SCALE:
1/8" = 1'-0"

ISSUE:
JULY 11, 2013

TITLE
PLUMBING
SANITARY PIPING
PLAN - PHASE 2

SHEET
PL101

A1 PLUMBING SANITARY PIPING PLAN - PHASE 2
1/8" = 1'-0"

No.	DATE	DESCRIPTION
5	08-08-2013	ADDENDUM-5

REVISION SCHEDULE