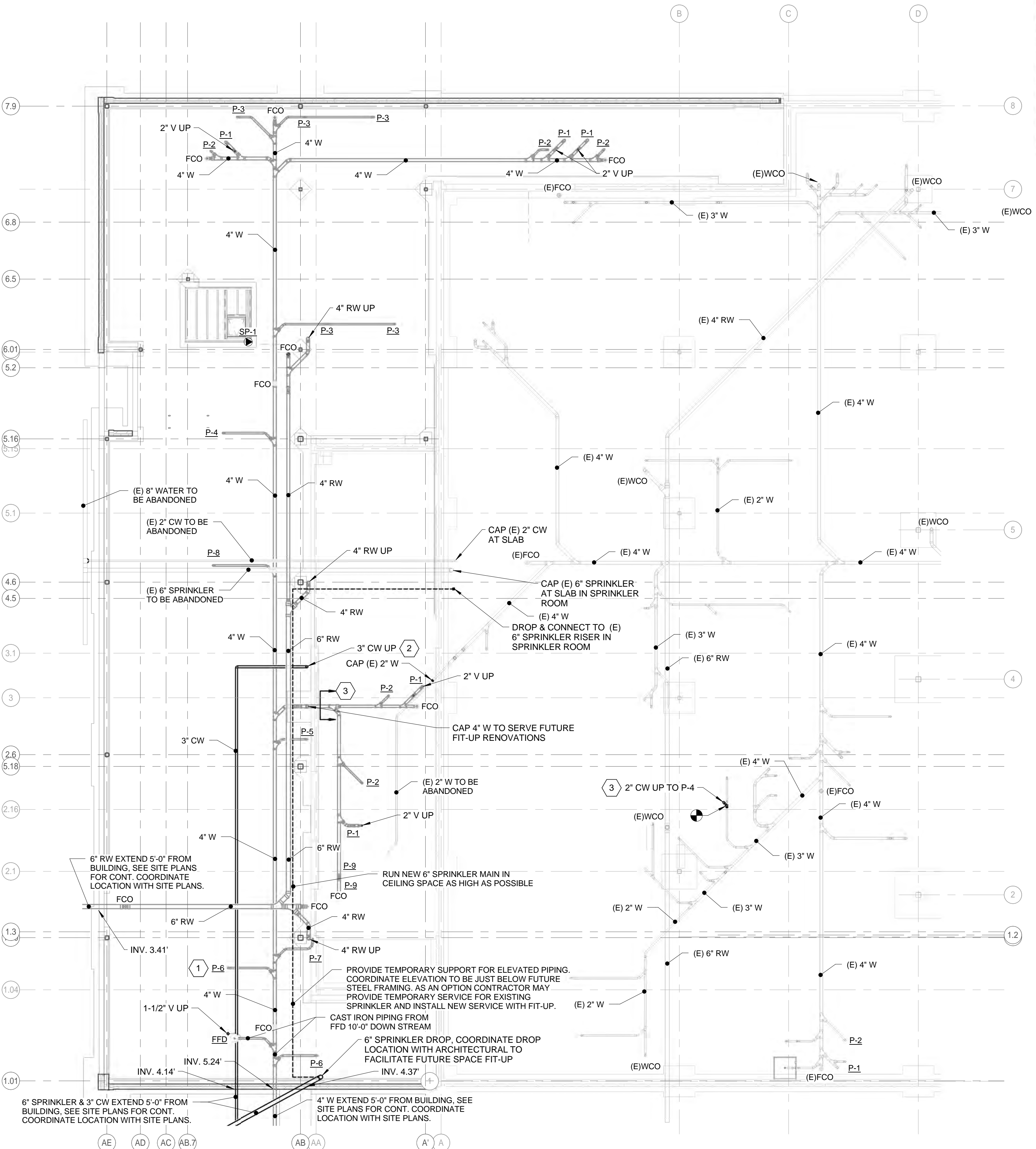


TAG	DESCRIPTION	BRANCH SIZES				NOTES
		CW	HW	VENT	WASTE	
P-1	WATER CLOSET - TANK TYPE	1/2"	—	2"	3"	
P-2	LAVATORY, WALL MOUNT	1/2"	1/2"	1-1/2"	1-1/2"	
P-3	EXAM SINK	1/2"	1/2"	1-1/2"	1-1/2"	
P-4	STAFF SINK 1	1/2"	1/2"	1-1/2"	2"	
P-5	NURSE STATION NOURISHMENT SINK	1/2"	1/2"	1-1/2"	2"	
P-6	CLEAN ROOM SINK 1	1/2"	1/2"	1-1/2"	1-1/2"	
P-7	CLEAN ROOM SINK 2	1/2"	1/2"	1-1/2"	1-1/2"	
P-8	POST OP SINK	1/2"	1/2"	1-1/2"	1-1/2"	
P-9	SCRUB SINK	1/2"	1/2"	1-1/2"	1-1/2"	INSTALL ONLY

NOTE: PLUMBING FIXTURES (ISSUED FOR REFERENCE)

- KEYED NOTES:**
- 1 FIXTURE DESIGNATION IS FOR REFERENCE ONLY COORDINATING ROUGH-IN & SIZING REQUIREMENTS. FIXTURES WILL BE FURNISHED AND INSTALLED WITHIN THE FIT-UP PACKAGE (TYP.).
 - 2 EXTEND 3" CW SERVICE INTO EXISTING SPRINKLER ROOM (RUN ABOVE CEILING) AND CONNECT, TEMPORARILY, TO EXISTING 2" SERVICE. FIT-UP PACKAGE WILL UPGRADE THIS SERVICE TO MEET ADDITIONAL DEMAND.
 - 3 PIPING SHOWN FOR REFERENCE. INSTALLATION WILL BE COMPLETED IN FIT-UP PACKAGE.



6/13/2013 12:16:53 PM N:\Projects\2012\12064 - Eyecare Medical Group-Addition and Renovation\00 Drawing Files\12064_M.rvt