



PDT ARCHITECTS
 48 DARTMOUTH STREET
 PORTLAND, MAINE 04101
 207-775-1059
 www.pdtarch.com

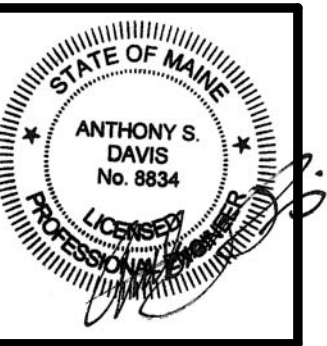


Allied Engineering
 Structural Mechanical Electrical Commissioning
 160 Veranda Street
 Portland, Maine 04103
 P: 207.221.2266
 F: 207.221.2266
 Web: www.allied-eng.com

ALLIED PROJECT No.:
 12064
 CAD FILE:

COPYRIGHT 2012
 PDT Architects
 Reuse or reproduction of the
 contents of this document is not
 permitted without written
 permission of PDT Architects.

E.M.G. - PHASE 2 ADDITION & RENOVATION
 53 Sewall Street, Portland, ME 04102



PDT JOB NO.
 12084

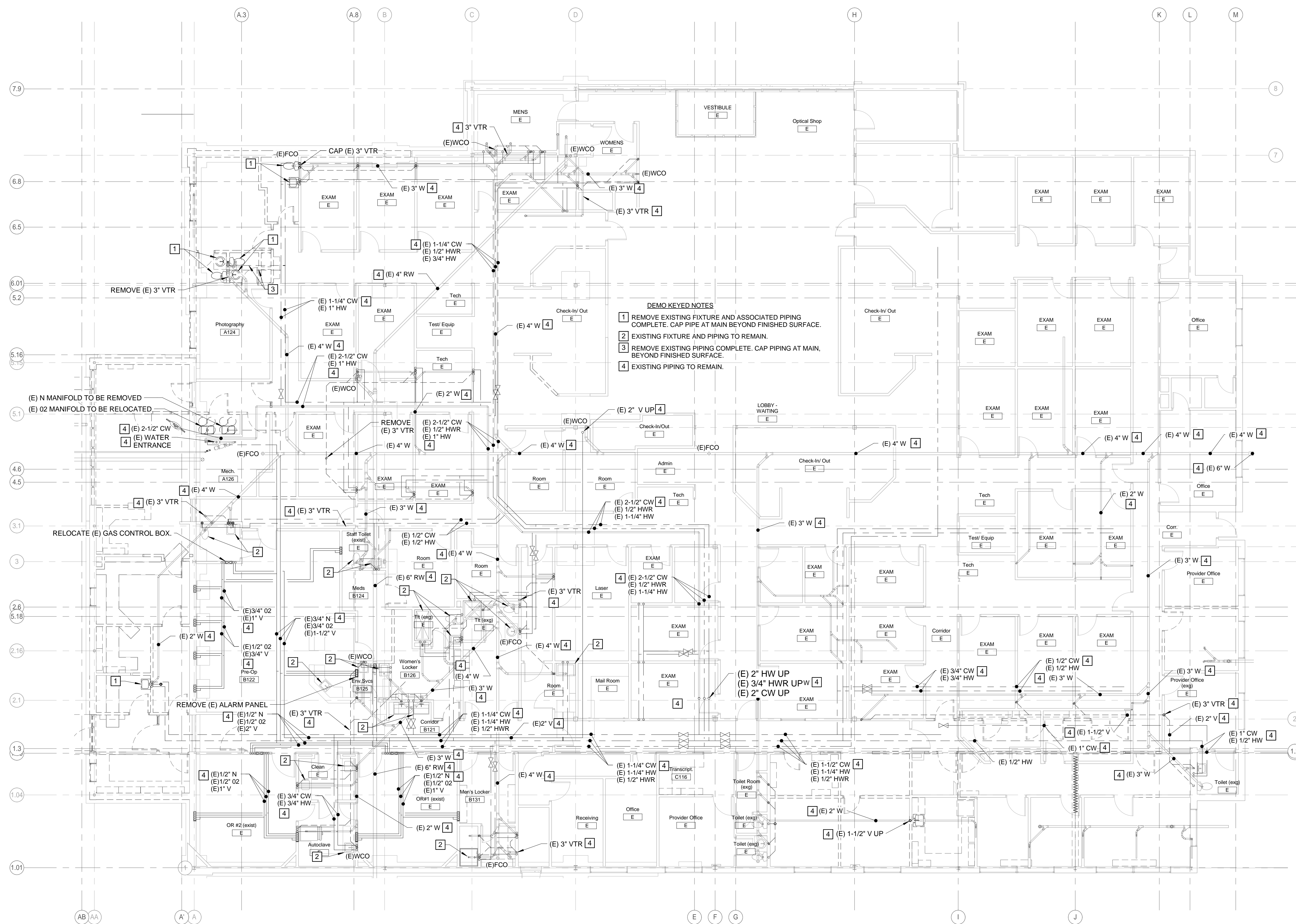
DRWN. CHK
 Checker

SCALE:
 1/8" = 1'-0"

ISSUE:
 JULY 11, 2013

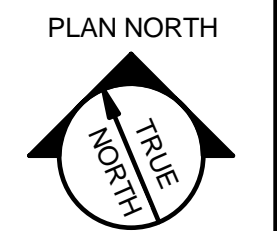
TITLE
 PLUMBING
 DEMOLITION
 PLAN - PHASE 2

SHEET
PD100



DEMO KEYED NOTES

- 1 REMOVE EXISTING FIXTURE AND ASSOCIATED PIPING COMPLETE. CAP PIPE AT MAIN BEYOND FINISHED SURFACE.
- 2 EXISTING FIXTURE AND PIPING TO REMAIN.
- 3 REMOVE EXISTING PIPING COMPLETE. CAP PIPING AT MAIN, BEYOND FINISHED SURFACE.
- 4 EXISTING PIPING TO REMAIN.



7/11/2013 5:54:07 PM N:\Projects\2012\12064 - Eyecare Medical Group-Addition and Renovation\00 Drawing Files\12064_M.rvt

A1 PLUMBING DEMOLITION PLAN - PHASE 2
 1/8" = 1'-0"