



48 DARTMOUTH STREET  
PORTLAND, MAINE 04101  
207-775-1059  
www.pdtarch.com

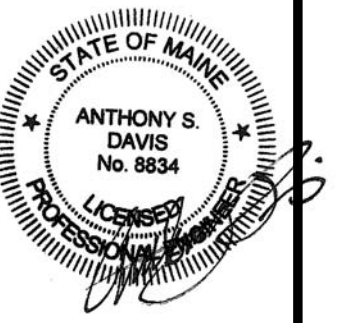


160 Veranda Street  
Portland, Maine 04103  
T: 207.221.2266  
F: 207.221.2266  
Web: www.allied-eng.com

ALLIED PROJECT No.:  
12064  
CAD FILE:

COPYRIGHT 2012  
PDT Architects  
Reuse or reproduction of the  
contents of this document is not  
permitted without written  
permission of PDT Architects.

E.M.G. - PHASE 2 ADDITION & RENOVATION  
53 Sewall Street, Portland, ME 04102



PDT JOB NO.  
12084

DRWN. CHK  
Checker

SCALE:  
1/4" = 1'-0"

ISSUE:  
JULY 11, 2013

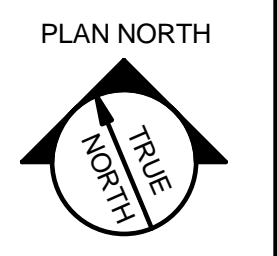
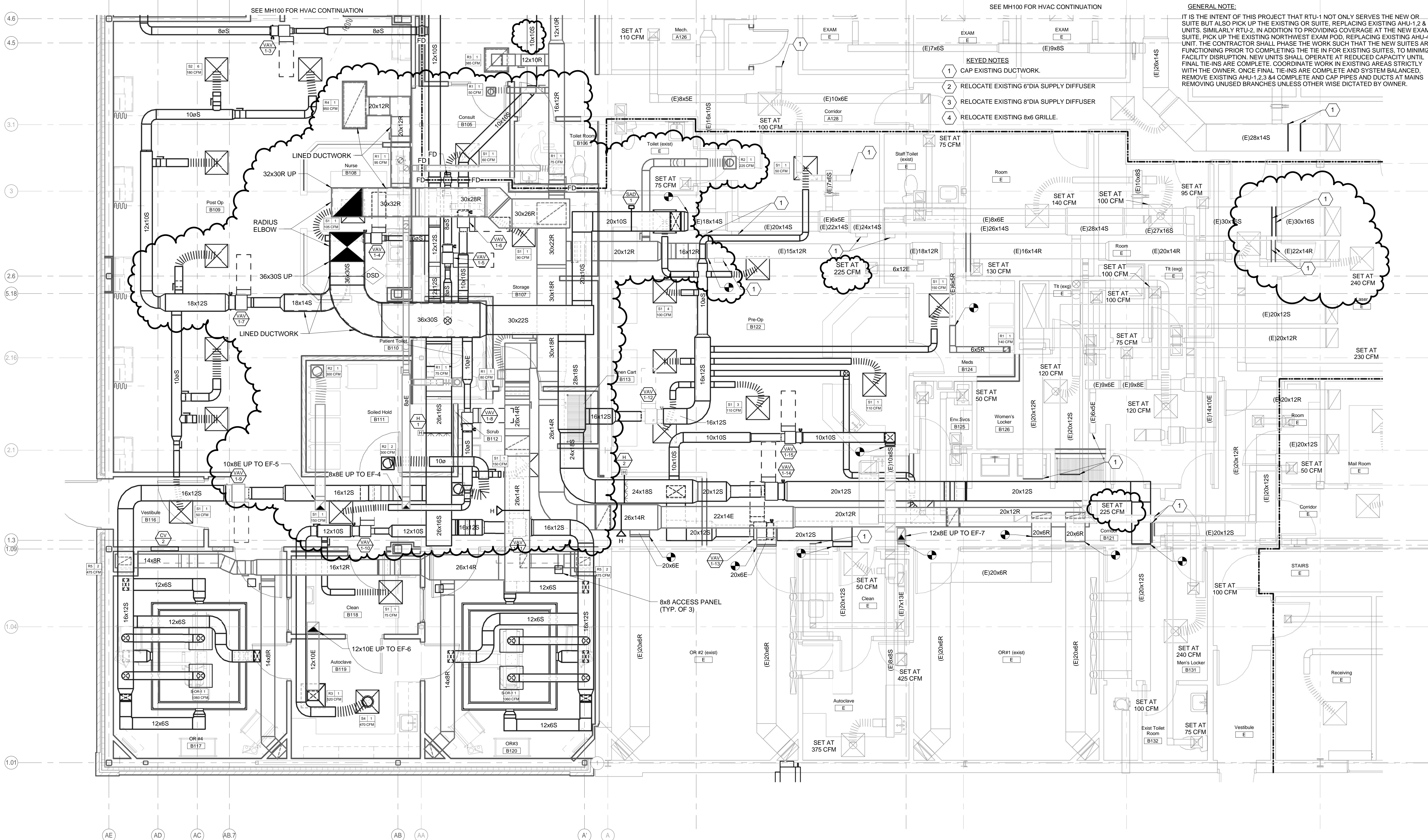
TITLE  
MECHANICAL  
DUCTWORK PLAN  
- PHASE 2

SHEET

MH101

GENERAL NOTE:  
IT IS THE INTENT OF THIS PROJECT THAT RTU-1 NOT ONLY SERVES THE NEW OR SUITE BUT ALSO PICK UP THE EXISTING OR SUITE. REPLACING EXISTING AHU-1, 2 & 3 UNITS. SIMILARLY RTU-2, IN ADDITION TO PROVIDING COVERAGE AT THE NEW EXAM SUITE, PICK UP THE EXISTING NORTHWEST EXAM POD, REPLACING EXISTING AHU-4 UNIT. THE CONTRACTOR SHALL PHASE THE WORK SUCH THAT THE NEW SUITES ARE FUNCTIONING PRIOR TO COMPLETING THE TIE IN FOR EXISTING SUITES, TO MINIMIZE FACILITY DISRUPTION. NEW UNITS SHALL OPERATE AT REDUCED CAPACITY UNTIL FINAL TIE-INS ARE COMPLETE. COORDINATE WORK IN EXISTING AREAS STRICTLY WITH THE OWNER. ONCE FINAL TIE-INS ARE COMPLETE AND SYSTEM BALANCED, REMOVE EXISTING AHU-1, 2, 3 & 4 COMPLETE AND CAP PIPES AND DUCTS AT MAINS REMOVING UNUSED BRANCHES UNLESS OTHERWISE DICTATED BY OWNER.

- KEYED NOTES
- 1 CAP EXISTING DUCTWORK.
  - 2 RELOCATE EXISTING 6" DIA SUPPLY DIFFUSER
  - 3 RELOCATE EXISTING 8" DIA SUPPLY DIFFUSER
  - 4 RELOCATE EXISTING 8x6 GRILLE.



8/8/2013 6:44:20 PM N:\Projects\2012\12064 - Eyecare Medical Group-Addition and Renovation\00 Drawing Files\12064\_M.rvt

A1 MECHANICAL DUCTWORK ENLARGED AREA B PLAN - PHASE 2

1/4" = 1'-0"

No.	DATE	DESCRIPTION
5	08-08-2013	ADDENDUM-5

REVISION SCHEDULE