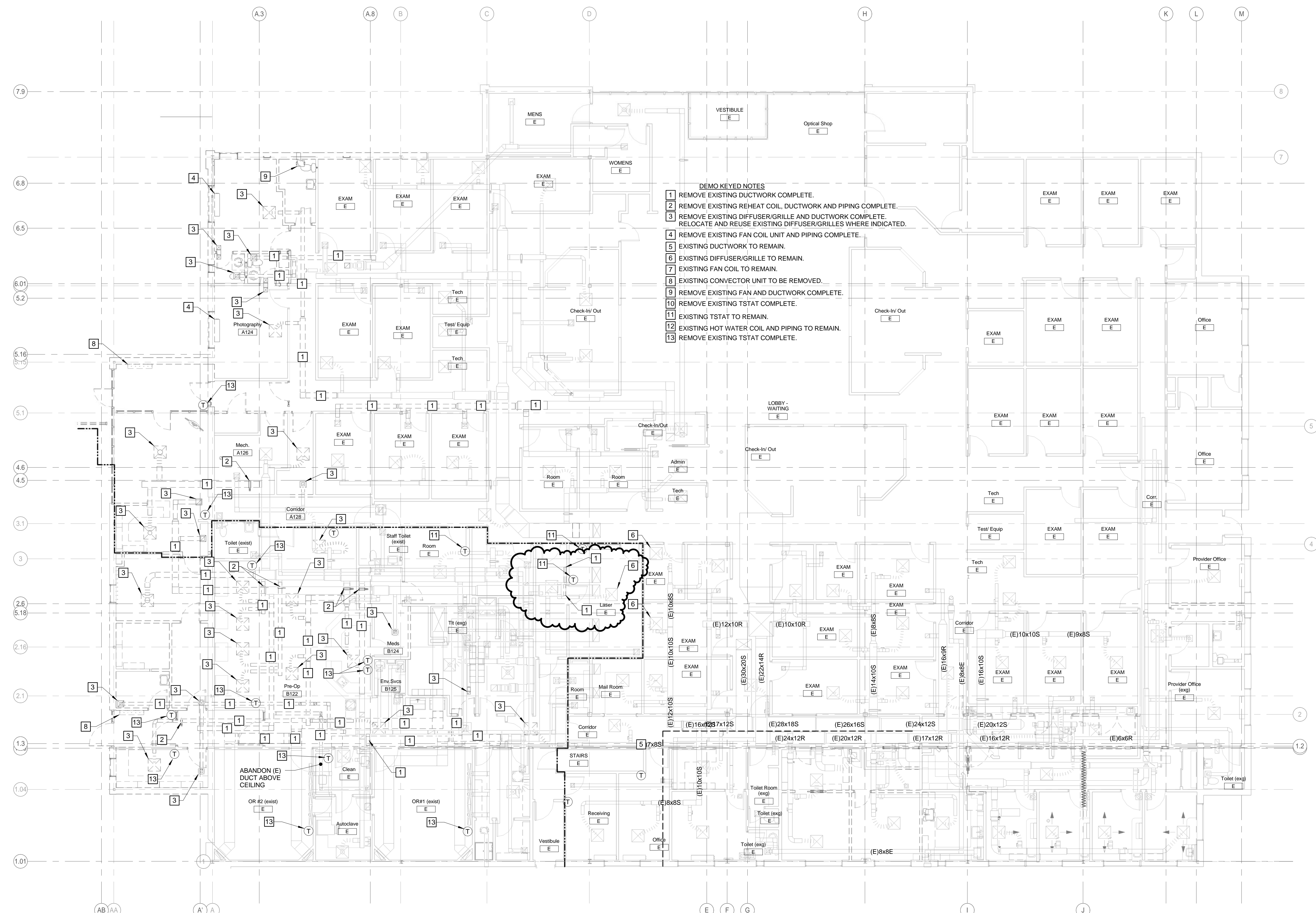


N:\Projects\2012\12064 - Eyecare Medical Group-Addition and Renovation\00 Drawing Files\12064_M.rvt 8/8/2013 6:44:02 PM



- DEMO KEVED NOTES**
- 1 REMOVE EXISTING DUCTWORK COMPLETE.
 - 2 REMOVE EXISTING REHEAT COIL, DUCTWORK AND PIPING COMPLETE.
 - 3 REMOVE EXISTING DIFFUSER/GRILLE AND DUCTWORK COMPLETE. RELOCATE AND REUSE EXISTING DIFFUSER/GRILLES WHERE INDICATED.
 - 4 REMOVE EXISTING FAN COIL UNIT AND PIPING COMPLETE.
 - 5 EXISTING DUCTWORK TO REMAIN.
 - 6 EXISTING DIFFUSER/GRILLE TO REMAIN.
 - 7 EXISTING FAN COIL TO REMAIN.
 - 8 EXISTING CONVECTOR UNIT TO BE REMOVED.
 - 9 REMOVE EXISTING FAN AND DUCTWORK COMPLETE.
 - 10 REMOVE EXISTING TSTAT COMPLETE.
 - 11 EXISTING TSTAT TO REMAIN.
 - 12 EXISTING HOT WATER COIL AND PIPING TO REMAIN.
 - 13 REMOVE EXISTING TSTAT COMPLETE.

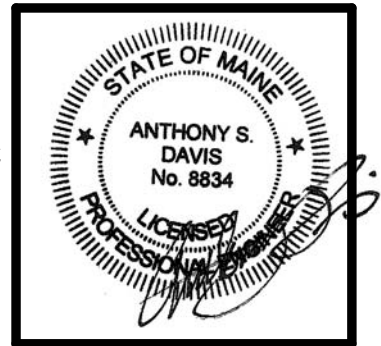
PDT ARCHITECTS
 48 DARTMOUTH STREET
 PORTLAND, MAINE 04101
 207-775-1059
 www.pdtarchs.com

Allied Engineering
 Structural Mechanical Electrical Commissioning
 160 Veranda Street
 Portland, Maine 04103
 Tel: 207.221.2260
 Fax: 207.221.2260
 Web: www.allied-eng.com

ALLIED PROJECT No.:
12064
CAD FILE:

COPYRIGHT 2012
PDT Architects
Reuse or reproduction of the
contents of this document is not
permitted without written
permission of PDT Architects.

E.M.G. - PHASE 2 ADDITION & RENOVATION
 53 Sewall Street, Portland, ME 04102



PDT JOB NO.
12084

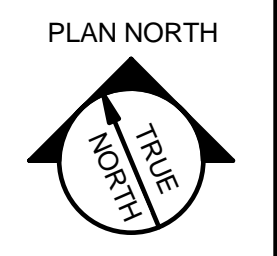
DRWN. CHK
Checker

SCALE:
1/8" = 1'-0"

ISSUE:
JULY 11, 2013

TITLE
MECHANICAL
DEMOLITION
PLAN - PHASE 2

SHEET
MD100



No.	DATE	DESCRIPTION
5	08-08-2013	ADDENDUM-5

REVISION SCHEDULE

A1 MECHANICAL DEMOLITION PLAN - PHASE 2
 1/8" = 1'-0"