

FEEDER SCHEDULE			
TAG	DESCRIPTION	CONDUCTORS (NOTE 1)	CONDUIT (NOTE 2)
	UNLESS TAGGED OR NOTED OTHERWISE, ALL FEEDERS SHALL BE: 225 AMP SECONDARY W/ %200 NEUTRAL	(3) #4/0, (2) #4/0 N, (1) #4 G	2 1/2"
1A	125 AMP PRIMARY/FEEDER	(3) #1, (1) #6 G	1 1/4"
1B	100 AMP SECONDARY/FEEDER	(4) #2, (1) #8 G	1 1/4"
1C	100 AMP SECONDARY W/ %200 NEUTRAL	(3) #2, (2) #2 N, (1) #8 G	1 1/2"
2A	225 AMP PRIMARY/FEEDER	(3) #4/0, (1) #4 G	2"
2B	225 AMP SECONDARY/FEEDER	(4) #4/0, (1) #4 G	2 1/2"
4A	400 AMP PRIMARY/FEEDER	(3) 500, (1) #3 G	3"
4B	400 AMP SECONDARY/FEEDER	(4) 500, (1) #3 G	3"
4C	400 AMP SECONDARY W/ %200 NEUTRAL	(3) 500, (2) 500 N, (1) #3 G	3 1/2"
A	1000 AMP SECONDARY/FEEDER	(4) 500 KCMIL, (1) #2 G	IN EACH OF (4) 3"
B	2000 AMP SERVICE ENTRANCE FEEDER - UNDERGROUND	(4) 500 KCMIL	IN EACH OF (6) 4"
C	600 AMP SECONDARY/FEEDER W/ 200% NEUTRAL	(3) 500 KCMIL, (2) 500 KCMIL, (1) #1 G	IN EACH OF (2) 3"
D	300 AMP PRIMARY/FEEDER	(4) 300 Kcmil, (1) #1 G	3"
E	800 AMP SECONDARY/FEEDER W/200% NEUTRAL	(3) 500 KCMIL, (2) 500 KCMIL, (1) #2/0 G	IN EACH OF (3) 3"
F	600 AMP SECONDARY/FEEDER	(4) 300 KCMIL, (1) #1 G	IN EACH OF (2) 3"
G	60 AMP PRIMARY/FEEDER	(3) #8, (1) #10 G	3/4"
H	175 AMP PRIMARY/FEEDER UPSIZED FOR VOLTAGE DROP	(3) #4/0, (1) #4 G	2"
I	600 AMP PRIMARY/FEEDER	(3) 500, (1) #3 G	IN EACH OF (2) 3"
J	1200 AMP SECONDARY/FEEDER	(4) 500 KCMIL, (1) #2 G	IN EACH OF (4) 3"

FEEDER SCHEDULE NOTES:

- 1 WIRING BASED ON COPPER THWN/THHN
- 2 CONDUIT SIZE BASED ON EMT

TRANSFORMER SCHEDULE/KEY

TAG	DESCRIPTION	NOTES
TC	75 KVA	2
TL	45 KVA	2
TN	75 KVA	2

TRANSFORMER SCHEDULE NOTES:

- 1 ALL TRANSFORMERS ARE RATED:
480 VOLT, 3 PHASE, 3 WIRE PRIMARY AND
208Y/120VOLT, 3 PHASE, 4 WIRE SECONDARY U.N.O
- 2 SUSPEND TRANSFORMER FROM STRUCTURE.

ELECTRICAL SCHEDULE OF MECHANICAL EQUIPMENT																		
TAG	DESCRIPTION	VOLTS	PH	LOAD	MCA	MOPD	DISCONNECT SWITCH				STARTER (NEMA)			PANEL	WIRING IN CONDUIT	NOTES		
							FRAME	POLES	FUSE	NEMA ENCL	FBD	SIZE/VFD	FBD				CBD	
P-4P	HEATING CIRC. PUMP	120	1	0.75 HP	13.8	25A	30	2	NF	1	26	0	26	23	GEN3	2#10,1#10G- 3/4"C	5	
P-2D	DOM WATER CIRC. PUMP	120	1	0.75 HP	13.8	25A	30	2	NF	1	26	0	26	23	GEN3	2#10,1#10G- 3/4"C	5	
CHWP-1	CHILLED WATER PUMP	460	3	7.5 HP	11.0	20A	30	3	NF	1	26	23	26	23	SEP	3#12,1#12G- 3/4"C		
CHWP-2	CHILLED WATER PUMP	460	3	7.5 HP	11.0	20A	30	3	NF	1	26	23	26	23	SEP	3#12,1#12G- 3/4"C		
HWP-1	SECONDARY HOT WATER PUMP	460	3	2 HP	3.4	15A	30	3	NF	1	26	23	26	23	C1	3#12,1#12G- 3/4"C		
HWP-2	SECONDARY HOT WATER PUMP	460	3	2 HP	3.4	15A	30	3	NF	1	26	23	26	23	C1	3#12,1#12G- 3/4"C		
RCP-2	DHW RECIRC. PUMP	120	1	1/8 HP		20A	30	2	NF	1	26	0	26	23	C2	2#12, 1#12G-3/4"C		
SP-1	ELEV SUMP PUMP	120	1	0.4 HP		20A									C2	2#12, 1#12G-3/4"C	4	
B-4	BOILER	120	1		12	20A	30	2	NF	1	26				GEN3	2#12, 1#12G-3/4"C	5	
ACC-2	AIR COOLED CHILLER	460	3		94.6	110A					23		23	23	SEP	3#1/0, 1#6G-1-1/2"C		
RTU-1	AIR HANDLER UNIT- SUPPLY (9695 CFM)	460	3	(2) 10HP	41.1	60A					23	23	23	23	C1	3#4, 1#10G- 1-1/2"C	2,3	
	AIR HANDLER UNIT- RETURN (9695 CFM)	460	3	(2) 3HP														
RTU-2	AIR HANDLER UNIT- SUPPLY (3350 CFM)	460	3	3HP	9.4	20A					23	23	23	23	C1	3#12, 1#12G- 3/4"C	2,3	
	AIR HANDLER UNIT- RETURN (3350 CFM)	460	3	2HP														
UH-1	UNIT HEATER	120	1	16W		15A	30	2	NF	1	26				N2	2#12, 1#12G-3/4"C		
EF-1	CEILING EXHAUST FAN- FUTURE ELEV MACH	120	1	144W			30	2	NF	1	26				C2	2#12, 1#12G-3/4"C		
EF-2	ROOF EXHAUST FAN-TOILET RM'S	120	1	0.040HP			30	2	NF	3R	26				C2	2#12, 1#12G-3/4"C		
EF-3	CEILING EXHAUST FAN- MED GAS RM.	120	1	62W			30	2	NF	1	26				C2	2#12, 1#12G-3/4"C		
EF-4	ROOF EXHAUST FAN-TOILET RM'S	120	1	0.050HP			30	2	NF	3R	26				C2	2#12, 1#12G-3/4"C		
EF-5	ROOF EXHAUST FAN- SOIL HOLD	120	1	0.125 HP			30	2	NF	3R	26				C2	2#12, 1#12G-3/4"C		
EF-6	ROOF EXHAUST FAN- AUTOCLAVE	120	1	0.125 HP			30	2	NF	3R	26				C2	2#12, 1#12G-3/4"C		
EF-7	ROOF EXHAUST FAN-AUTOCLAVE	120	1	0.125 HP			30	2	NF	3R	26				C2	2#12, 1#12G-3/4"C		
H-1	STEAM GEN. HUMIDIFIER	480	3		10.8	15A	30	3	NF	1	26				N1	3#12, 1#12G-3/4"C		
H-2	STEAM GEN. HUMIDIFIER	480	3		10.8	15A	30	3	Nf	1	26				N1	3#12, 1#12G-3/4"C		

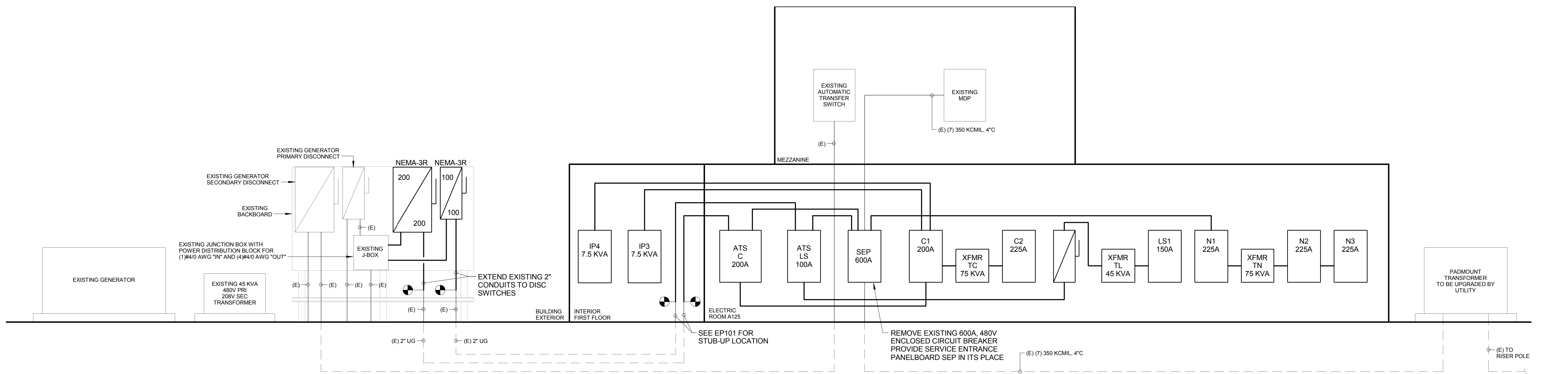
NOTES:

- 1 LEAD/LAG
- 2 SINGLE POINT POWER CONNECTION
- 3 DUCT SMOKE DETECTOR FURNISHED AND WIRED TO FIRE ALARM BY DIV 26, INSTALLED IN DUCT AND WIRED TO HVAC CONTROLS BY DIV 23
- 4 PLUG IN RECEPTACLE BY DIV.26
- 5 EXTEND CIRCUIT AND CONNECT TO EXISTING PANEL "GEN3" LOCATED ON MAZZANINE.PROVIDE CIRCUIT BREAKER WITH RATING AS INDICATED

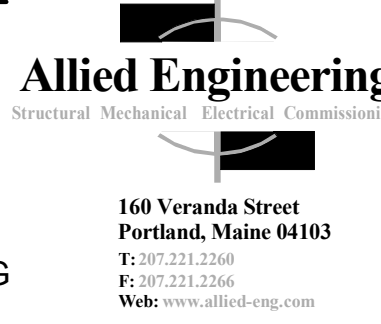
ABBREVIATIONS:

- | | |
|------|----------------------------|
| FWE | FURNISHED WITH EQUIPMENT |
| NF | NOT FUSED |
| SWBD | SWITCHBOARD |
| FBD | FURNISHED BY DIVISION |
| CBD | CONTROL WIRING BY DIVISION |

D4 ELECTRICAL SCHEDULE OF MECHANICAL EQUIPMENT



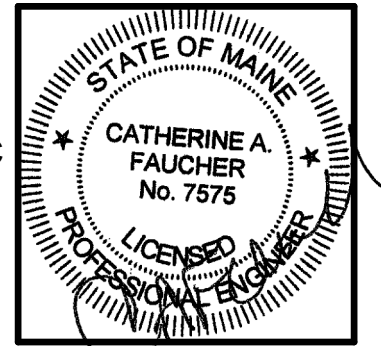
A1 POWER RISER DIAGRAM



ALLIED PROJECT No.:
12064
CAD FILE:

COPYRIGHT 2012
PDT Architects
Reuse or reproduction of the
contents of this document is not
permitted without written
permission of PDT Architects.

E.M.G. - PHASE 2 ADDITION & RENOVATION
53 Sewall Street, Portland, ME 04102



PDT JOB NO.
12084

DRWN. CHK
Checker

SCALE:
As indicated

ISSUE:
JULY 11, 2013

TITLE
POWER RISER AND
ELECTRICAL
SCHEDULE OF
MECHANICAL
EQUIPMENT

SHEET
EP500

7/11/2013 2:54:09 PM N:\Projects\2012\12064 - Eyecare Medical Group-Addition and Renovation\00 Drawing Files\12064_E_rvt