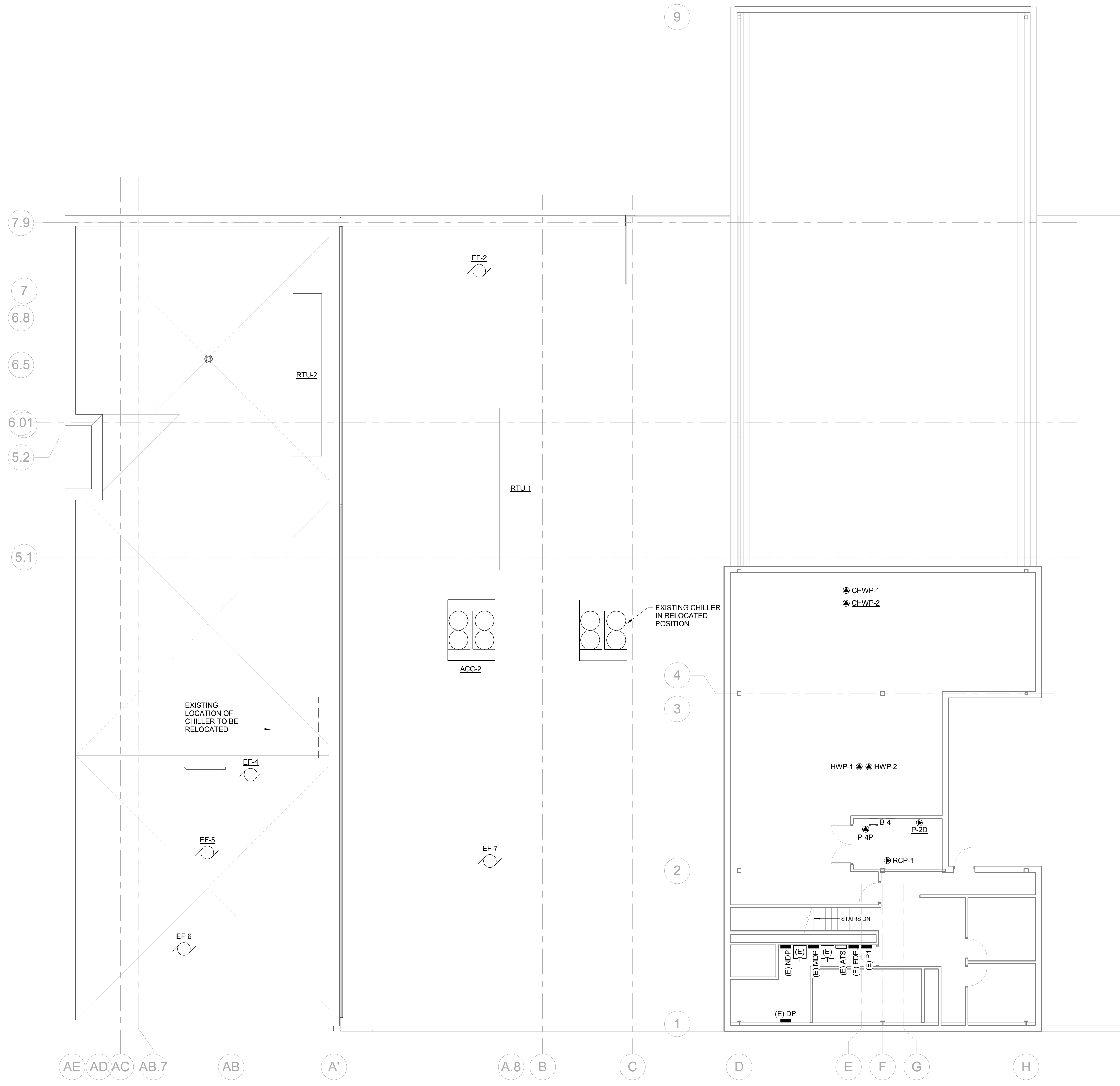


N:\Projects\2012\12064 - Eyecare Medical Group-Addition and Renovation\00 Drawing Files\12064_E.rvt
7/11/2013 2:40:00 PM



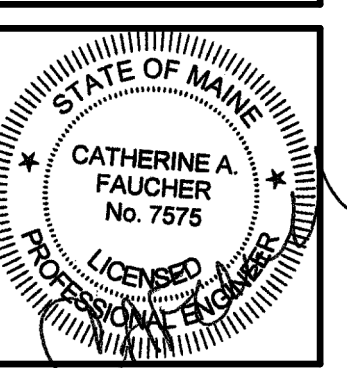
PDT ARCHITECTS
 49 DARTMOUTH STREET
 PORTLAND, MAINE 04101
 207-775-1059
 www.pdtarchs.com

Allied Engineering
 Structural Mechanical Electrical Commissioning
 160 Veranda Street
 Portland, Maine 04103
 T: 207.221.2260
 F: 207.221.2260
 Web: www.allied-eng.com

ALLIED PROJECT No.:
12064
CAD FILE:

COPYRIGHT 2012
PDT Architects
 Reuse or reproduction of the
 contents of this document is not
 permitted without written
 permission of PDT Architects.

E.M.G. - PHASE 2 ADDITION & RENOVATION
 53 Sewall Street, Portland, ME 04102



PDT JOB NO.
12084

DRWN. CHK
Checker

SCALE:
1/8" = 1'-0"

ISSUE:

JULY 11, 2013

TITLE
ELECTRICAL
MEZZANINE AND
PARTIAL ROOF
PLAN

SHEET
EP102