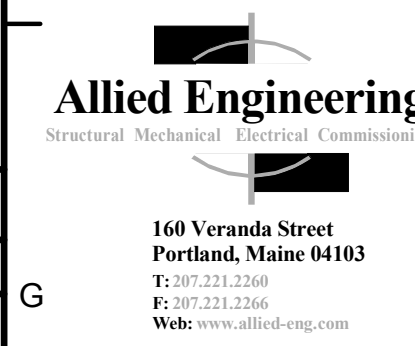
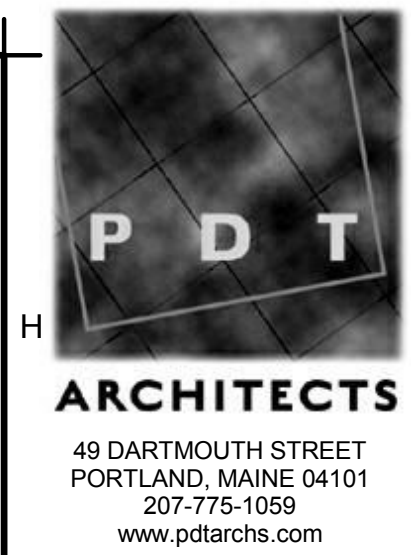
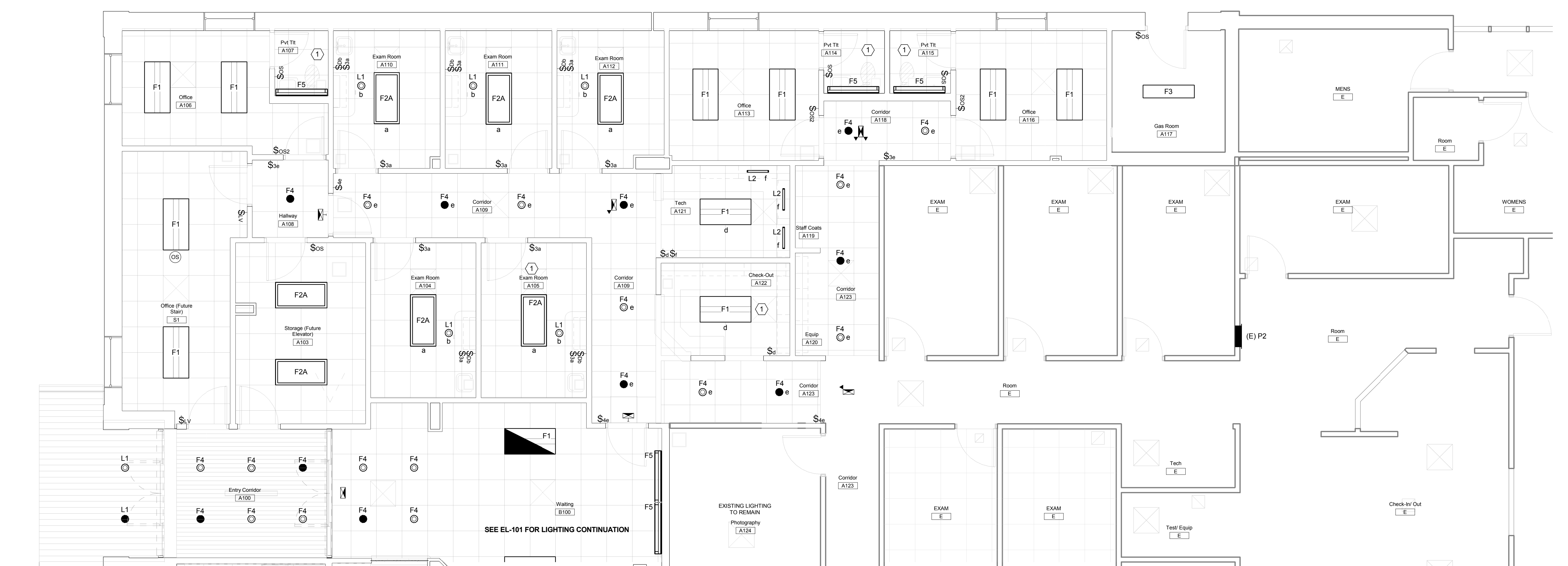


TYPE	DESCRIPTION	MFR	CATALOG SERIES NUMBER SEE NOTES 1 + 2	MOUNTING	VOLTS	LAMP			KEY NOTES
						QTY PER FIXTURE	WATTS	TYPE	
F1	2x4 HIGH PERFORMANCE TROFFER	FINELITE	HPR-A-2x4-DCO-2T8	RECESSED		2	32	T8 4100K	4
F1A	2x2 HIGH PERFORMANCE TROFFER	FINELITE	HPR-A-2x2-DCO-2T8	RECESSED		2	17	T8 4100K	4
F2	2x2 LENSED GRID TROFFER	LITHONIA	2GT8-2-17-A19	RECESSED		2	17	T8 4100K	4
F2A	2x2 LENSED GRID TROFFER	LITHONIA	2GT8-2-32-A19	RECESSED		2	32	T8 4100K	4
F3	4' FLUORESCENT WALL BRACKET	LITHONIA	WC-132	WALL OR CEILING SURFACE		2	32	T8 4100K	4
F4	6" DIA CLEAR SEMI-DIFFUSE CLEAR ALZAK DOWNLIGHT	PRESCOLITE	LF6CFH EB 6CFH WT	RECESSED		2	26	CFL QUAD 4100K	
F5	LINEAR WALL LIGHT	CORELITE	CLASS A PERF SERIES	WALL		1	32	T8 4100K	5
F6	2X4 4-LAMP SURGICAL TROFFER	KENALL	M2SEFI24-432-L1-2F-MLP-PF	RECESSED		4	32	T8 4100K	4
F7	2x4 GASKETED TROFFER	LITHONIA	2WRT-F-332-A19V	RECESSED		3	32	T8 4100K	4
L1	4" DIA CLEAR SEMI-DIFFUSE CLEAR ALZAK DOWNLIGHT	PRESCOLITE	LF4LED-4LFLED5	RECESSED		-	16.3	LED ARRAY 4000K	
L2	21" UNDERCOUNTER LIGHT	ALKCO	ARIS-11-301	BOTTOM OF CABINET		-	13	LED ARRAY 4000K	
	AC ONLY EXIT SIGN	LITHONIA	LQM-S-W-3-R-ELN	SEE NOTE 4		-	0.71	LED ARRAY	4

- NOTES**
- NOTE THAT THESE NUMBERS ARE NOT COMPLETE CATALOG #'S. PROVIDE ALL REQUIREMENTS ON SCHEDULE, NOTES, SPECS, AND DRAWINGS COMBINED.
  - CATALOG SERIES NUMBERS ARE USED TO ESTABLISH A LEVEL OF QUALITY AND NOT INTENDED TO LIMIT COMPETITION. SERIES NUMBERS ARE NOT COMPLETE CATALOG NUMBERS. COMPLY WITH ADDITIONAL REQUIREMENTS IN SPECIFICATIONS AND DRAWINGS.
  - PROVIDE "SUPER T8" LAMPS AND MATCHING BALLASTS; BASIS OF DESIGN BASED ON SYLVANIA PROSTART PSX PROGRAMMED RAPID START BALLAST (71 BALLAST FACTOR) AND MATCHING OCTRON XPS LAMPS
  - PROVIDE WALL, CEILING, OR PENDANT MOUNTING AS INDICATED ON PLANS. PROVIDE NUMBER OF FACES AND ARROWS AS INDICATED.
  - PROVIDE PROGRAMMED START BALLAST WITH ROOMS THAT HAVE OCCUPANCY SENSORS.
  - VERIFY CEILING STRUCTURE AND MOUNTING HEIGHT PRIOR TO ORDERING ANY LIGHT FIXTURES.

① CONNECT LIGHTING IN THIS ROOM TO CRITICAL BRANCH.

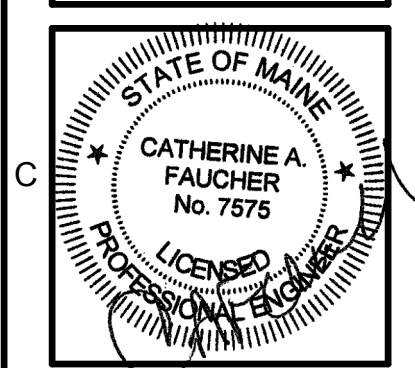
G9	KEY NOTES
----	-----------



ALLIED PROJECT No.: 12064  
CAD FILE:

COPYRIGHT 2012 PDT Architects  
Reuse or reproduction of the contents of this document is not permitted without written permission of PDT Architects.

**E.M.G. - PHASE 2 ADDITION & RENOVATION**  
53 Sewall Street, Portland, ME 04102



PDT JOB NO. 12084

DRWN. CHK Checker

SCALE: As indicated

ISSUE:

JULY 11, 2013

TITLE LIGHTING - AREA A AND LUMINAIRE SCHEDULE

SHEET

**EL100**

7/11/2013 2:39:44 PM N:\Projects\2012\12064 - Eyecare Medical Group-Addition and Renovation\00 Drawing Files\12064\_E.rvt

A1 LIGHTING - ENLARGED AREA A  
1/4" = 1'-0"