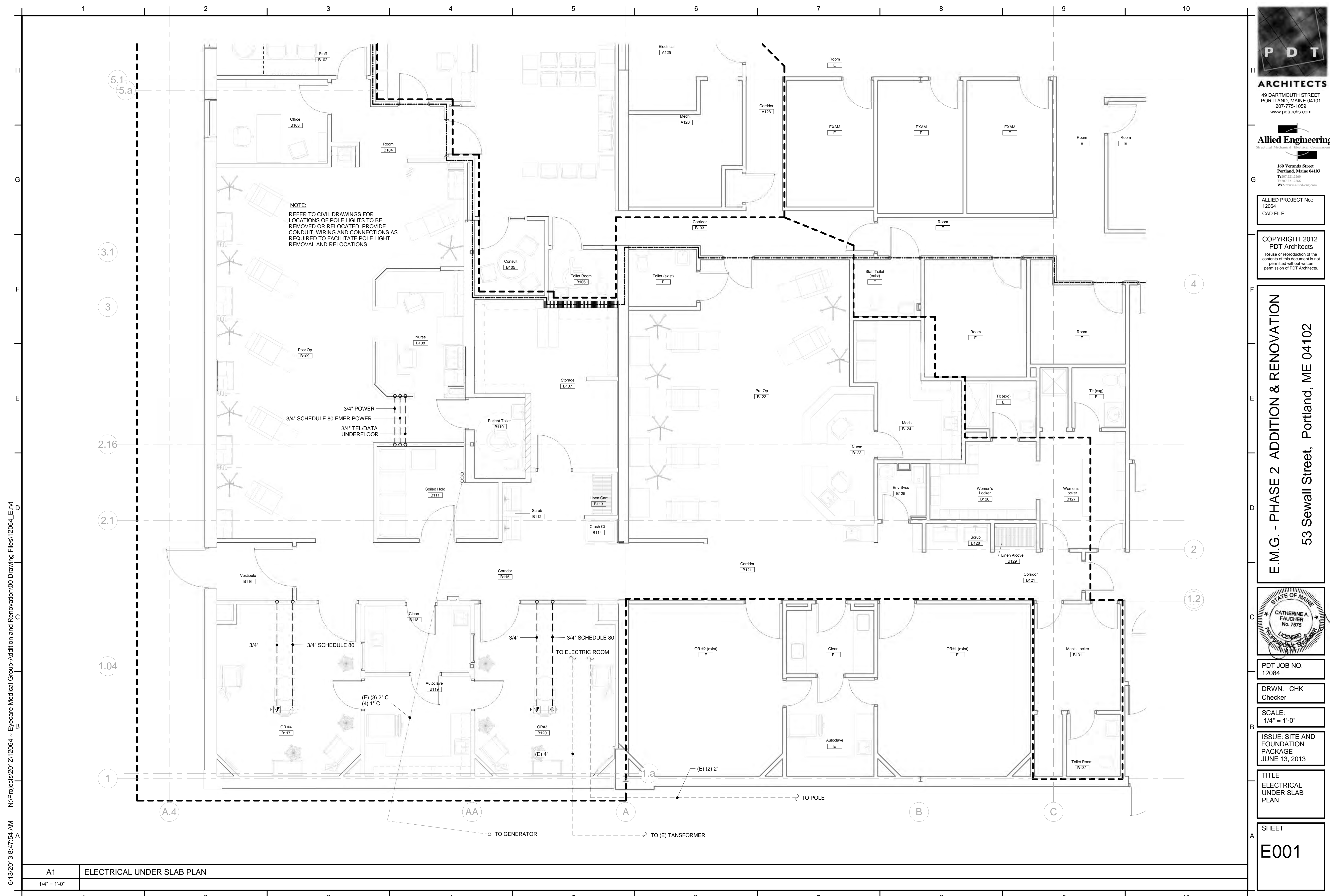


N:\Projects\2012\12064 - Eyecare Medical Group-Addition and Renovation\00 Drawing Files\12064_E.rvt



NOTE:
REFER TO CIVIL DRAWINGS FOR LOCATIONS OF POLE LIGHTS TO BE REMOVED OR RELOCATED. PROVIDE CONDUIT, WIRING AND CONNECTIONS AS REQUIRED TO FACILITATE POLE LIGHT REMOVAL AND RELOCATIONS.



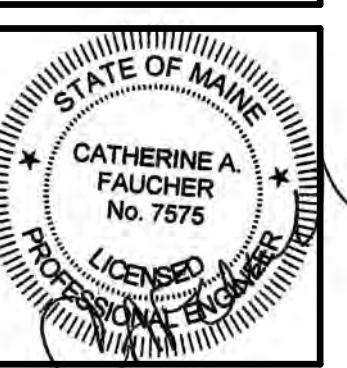
ARCHITECTS
49 DARTMOUTH STREET
PORTLAND, MAINE 04101
207-775-1059
www.pdtarchs.com

Allied Engineering
Structural Mechanical Electrical Consulting
160 Veranda Street
Portland, Maine 04103
T: 207.221.2260
F: 207.221.2266
Web: www.allied-eng.com

ALLIED PROJECT No.:
12064
CAD FILE:

COPYRIGHT 2012
PDT Architects
Reuse or reproduction of the contents of this document is not permitted without written permission of PDT Architects.

E.M.G. - PHASE 2 ADDITION & RENOVATION
53 Sewall Street, Portland, ME 04102



PDT JOB NO.
12084

DRWN. CHK
Checker

SCALE:
1/4" = 1'-0"

ISSUE: SITE AND FOUNDATION PACKAGE
JUNE 13, 2013

TITLE
ELECTRICAL UNDER SLAB PLAN

SHEET
E001

A1 ELECTRICAL UNDER SLAB PLAN
1/4" = 1'-0"