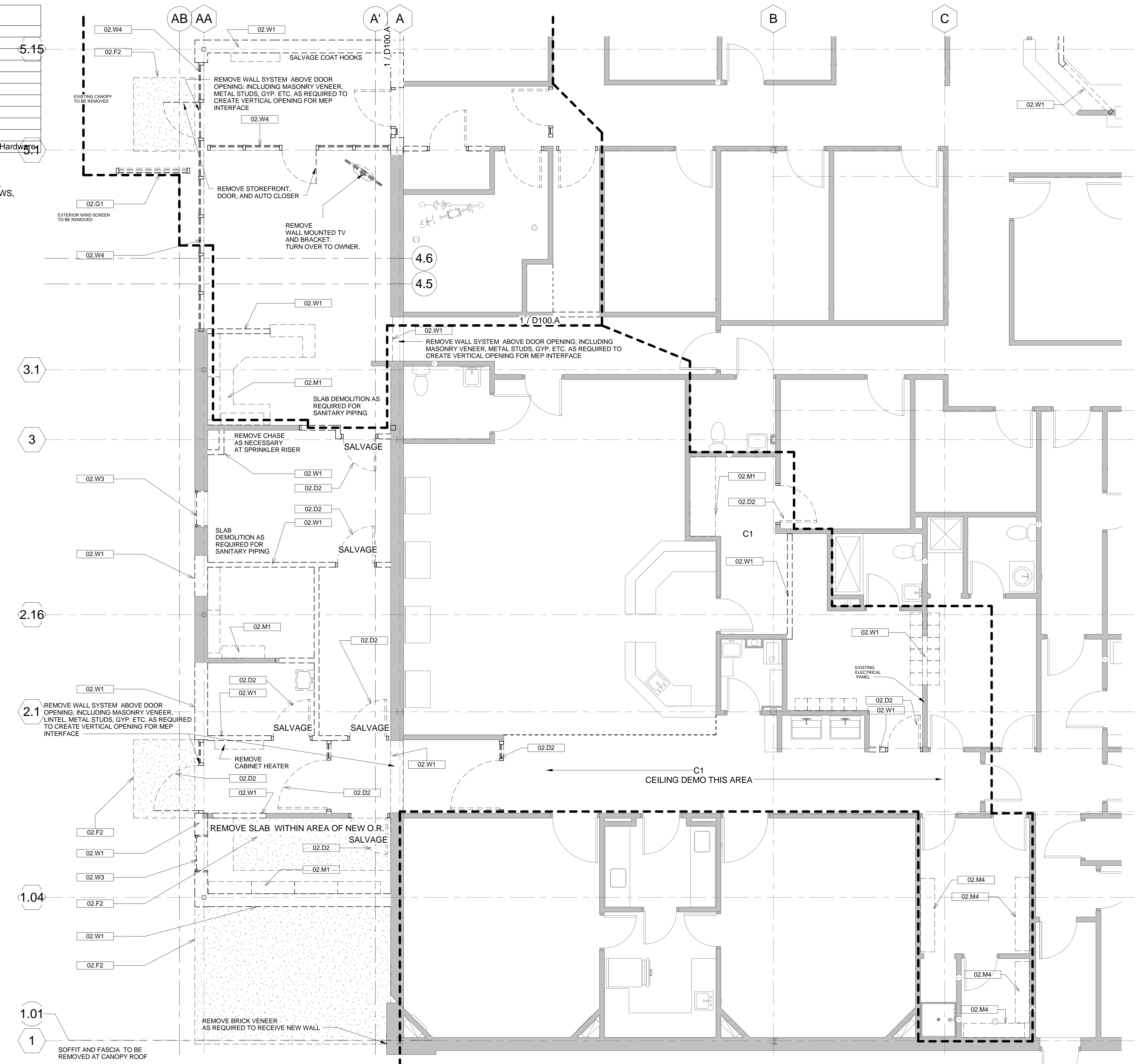


Demolition Keynote Legend	
Key Value	Keynote Text
02.C1	Ceiling To Be Removed, Including All Trim, Furring, Lathe, and Associated Items
02.D2	Door And Frame To Be Removed
02.F2	Concrete Slab To Be Removed
02.G1	Remove Existing Construction
02.M1	Casework To Be Removed
02.M4	Shelves To Be Removed, Including Standards and Brackets
02.W1	Wall To Be Removed, Including All Associated Finishes and Trim
02.W3	Window And Frame To Be Removed
02.W4	Storefront Systems To Be Removed, Windows, Doors, Metal Frames, and Associated Hardware

EXISTING EXTERIOR WALL DEMOLITION INCLUDES, BUT IS NOT LIMITED TO, GYPSUM WALL BOARD, VAPOR BARRIER, METAL STUDS, INSULATION, SHEATHING, BRICK VENEER, WINDOWS, DOORS, AND OTHER ASSOCIATED ITEMS



GENERAL NOTE:
REMOVE ALL EXISTING FLOORING AND ALL EXISTING CEILING MATERIALS IN 1999 ADDITION AREA

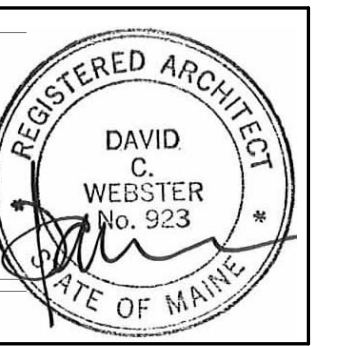
1 DEMO PLAN B
 1/4" = 1'-0"



49 DARTMOUTH STREET
 PORTLAND, MAINE 04101
 207-775-1059
 www.pdtarchs.com

COPYRIGHT 2013
 PDT Architects
 Reuse or reproduction of the
 contents of this document is not
 permitted without written
 permission of PDT Architects.

E. M. G.-PHASE 2-ADDITION & RENOVATION
 53 Sewall Street, Portland, ME 04102



JOB NO.
 12084

DRWN. CHK
 AJK

SCALE:
 1/4" = 1'-0"

ISSUE
 July 11, 2013

TITLE
 Demolition Plan B

SHEET
 D100.B