

ROOM FINISH SCHEDULE								
NUMBER	ROOM NAME	FLOOR	BASE MATL	WALLS				NOTES
				N	S	E	W	
A100	Entry Corridor	EFM	RB	P3	P3	P3	P3	CLEAR FINISH ON WOOD CEILING
A102	Coats	TC	RB	P1	P1	P1	P1	
A103	Storage (Future Elevator)	CONC	RB	P1	P1	P1	P1	
A104	Exam Room	SC	RB	P5	P5	P5	P5	
A105	Exam Room	SC	RB	P5	P5	P5	P5	
A106	Office	SC	RB	P6	P6	P6	P6	
A107	Pvt Tlt	CT	CT	CT/PT	CT/PT	CT/PT	CT/PT	
A108	Hallway	SC	RB	P1	P1	P1	P1	
A109	Corridor	SC	RB	P1	P1	P3	P1	EAST WALL ACCENT AT CHECK-OUT ONLY
A110	Exam Room	SC	RB	P5	P5	P5	P5	
A111	Exam Room	SC	RB	P5	P5	P5	P5	
A112	Exam Room	SC	RB	P5	P5	P5	P5	
A113	Office	SC	RB	P6	P6	P6	P6	
A114	Pvt Tlt	CT	CT	CT/PT	CT/PT	CT/PT	CT/PT	
A115	Pvt Tlt	CT	CT	CT/PT	CT/PT	CT/PT	CT/PT	
A116	Office	SC	RB	P6	P6	P6	P6	
A117	Gas Room	CONC	NA	P4	P4	P4	P4	
A118	Corridor	SC	RB	P1	P1	P1	P1	
A119	Staff Coats	SC	RB	P1	P1	P1	P1	
A120	Equip	SC	RB	P1	P1	P1	P1	
A121	Tech	SC	RB	P1	P1	P1	P1	
A122	Check-Out	SC	RB	P1	P1	P1	P1	
A123	Corridor	SC	RB	P1	P1	P1	P1	
A124	Photography	RSF	RB	P2	P2	P2	P2	
A125	Electrical	CONC	NA	P4	P4	P4	P4	
A126	Mech.	CONC	NA	NA	NA	NA	NA	
A127	Closet	SC	RB	P1	P1	P1	P1	
A128	Corridor	SC	RB	P1	P1	P1	P1	
B100	Waiting	TC	RB	P1	P1	P3	P3	WEST WALL ACCENT AT RECEPTION ONLY
B101	Reception	SC	RB	P1	P1	P1	P1	
B102	Staff	SC	RB	P1	P1	P1	P1	
B103	Office	SC	RB	P6	P6	P6	P6	
B104	Corridor	RSF	RB	P2	P2	P2	P2	
B105	Consult	TC	RB	P1	P1	P1	P1	
B106	Toilet Room	CT	CT	CT/PT	CT/PT	CT/PT	CT/PT	
B107	Storage	RSF	RB	P2	P2	P2	P2	
B108	Nurse	RSF	RB	P2	P2	P2	P2	
B109	Post Op	RSF	RB	P2	P2	P3	P2	EAST WALL ACCENT AT NURSE ONLY
B110	Patient Toilet	CT	CT	CT/PT	CT/PT	CT/PT	CT/PT	
B111	Soiled Hold	RSF	RB	P2	P2	P2	P2	
B112	Scrub	RSF	RB	P2	P2	P2	P2	
B113	Linen Cart	RSF	RB	P2	P2	P2	P2	
B114	Crash Ct	RSF	RB	P2	P2	P2	P2	
B115	Corridor	RSF	RB	P2	P2	P2	P2	
B116	Vestibule	EFM	RB	P3	P3	P3	P3	
B117	OR #4	RSF	RB	WP	WP	WP	WP	
B118	Clean	RSF	RB	WP	WP	WP	WP	
B119	Autoclave	RSF	RB	WP	WP	WP	WP	
B120	OR#3	RSF	RB	WP	WP	WP	WP	
B121	Corridor	EXIST	NA	NA	NA	NA	NA	
B122	Pre-Op	EXIST	NA	NA	NA	NA	NA	PAINT NEW SOFFIT
B123	Nurse	EXIST	NA	NA	NA	NA	NA	
B124	Meds	RSF	RB	P2	P2	P2	P2	
B125	Env.Svcs	EXIST	NA	NA	NA	NA	NA	
B126	Women's Locker	EXIST	NA	NA	NA	NA	NA	PATCH FLOOR, WALL, & CEING MATERIALS TO MATCH EXISTING
B127	Women's Locker	EXIST	NA	NA	NA	NA	NA	PATCH FLOOR, WALL, & CEING MATERIALS TO MATCH EXISTING
B128	Scrub	EXIST	NA	NA	NA	NA	NA	
B129	Linen Alcove	EXIST	NA	NA	NA	NA	NA	
B131	Men's Locker	EXIST	NA	NA	NA	NA	NA	REPAIR WALLS AT SHELVING REMOVALS
B132	Exist Toilet Room	EXIST	NA	NA	NA	NA	NA	
B133	Corridor	SC	RB	P1	P1	P1	P1	
E1	ELEVATOR	CONC	NA	NA	NA	NA	NA	
S1	Office (Future Stair)	SC	RB	P6	P6	P6	P6	CMU WALLS AS PART OF THIS PROJECT TO BE FINISH QUALITY FOR FUTURE STAIRWELL

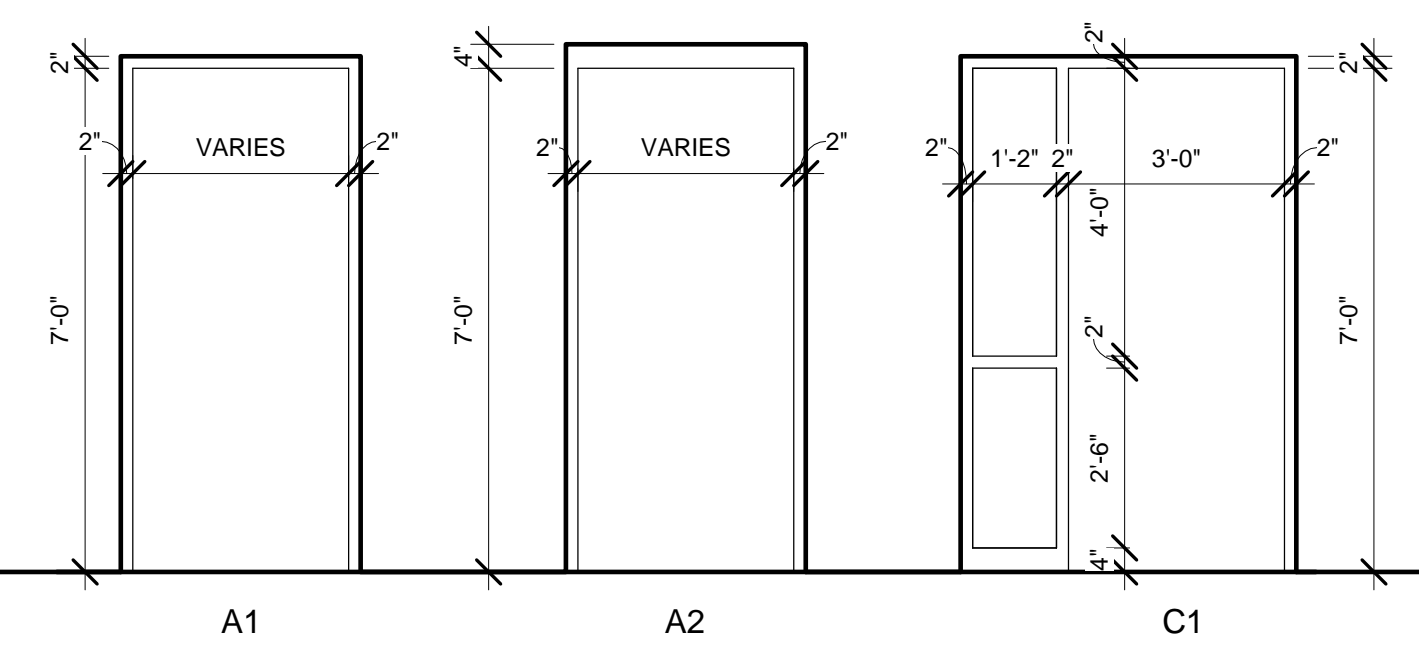
FINISH LEGEND:
 CT - CERAMIC TILE
 SC - SHEET CARPETING
 TC - TILE CARPETING
 RSF - RESILIENT SHEET FLOORING
 EFM - ENTRANCE FLOOR MAT
 CONC - CONCRETE
 EXIST - EXISTING TO REMAIN
 RB - RESILIENT BASE
 NA - NOT APPLICABLE

WP1 - WALL PROTECTION 1
 WP2 - WALL PROTECTION 1

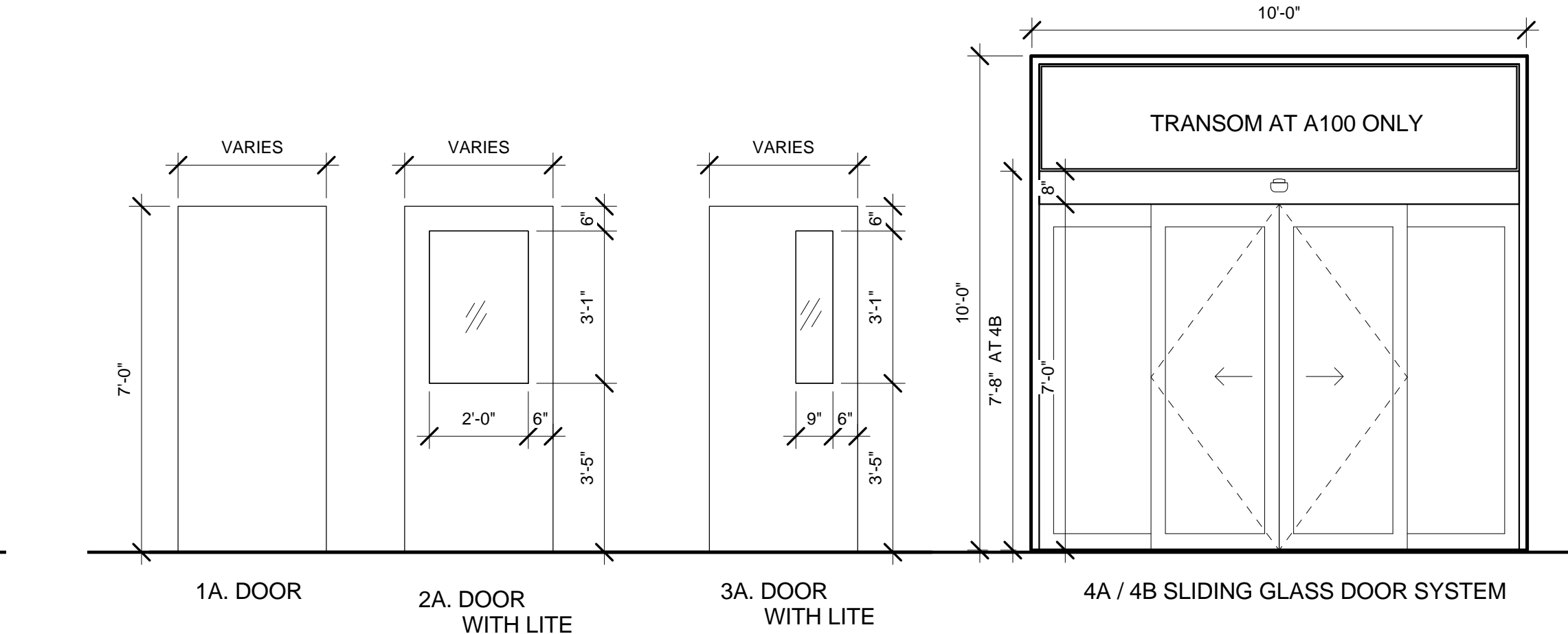
P1 - PAINT 1 EXAM POD AREA
 P2 - PAINT 2 OR SUITE AREA
 P3 - PAINT 3 ACCENT WALLS
 P4 - BRIGHT WHITE
 P5 - EXAM ROOMS
 P6 - OFFICES

NOTES:
 1. SEE SHEET A103 FOR EXTENTS OF FLOORING, PAINTING, AND ACCENT WALLS.
 2. ALL PAINT TRANSITIONS SHALL BE AT INSIDE AND OUTSIDE CORNERS UNLESS OTHERWISE NOTED.
 3. ALUM. STOREFRONT:
 EXTERIOR FINISH TO MATCH EXISTING BLUE
 INTERIOR FINISH TO BE BRIGHT WHITE
 4. HOLLOW METAL FRAMES:
 EXTERIOR FINISH TBD
 INTERIOR FINISH TO BE BRIGHT WHITE
 5. HOLLOW METAL DOORS TBD
 6. ELECTRICAL AND OTHER BACKER BOARDS TO BE PAINTED BLACK

ROOM FINISH SCHEDULE								
NUMBER	ROOM NAME	FLOOR	BASE MATL	WALLS				NOTES
				N	S	E	W	



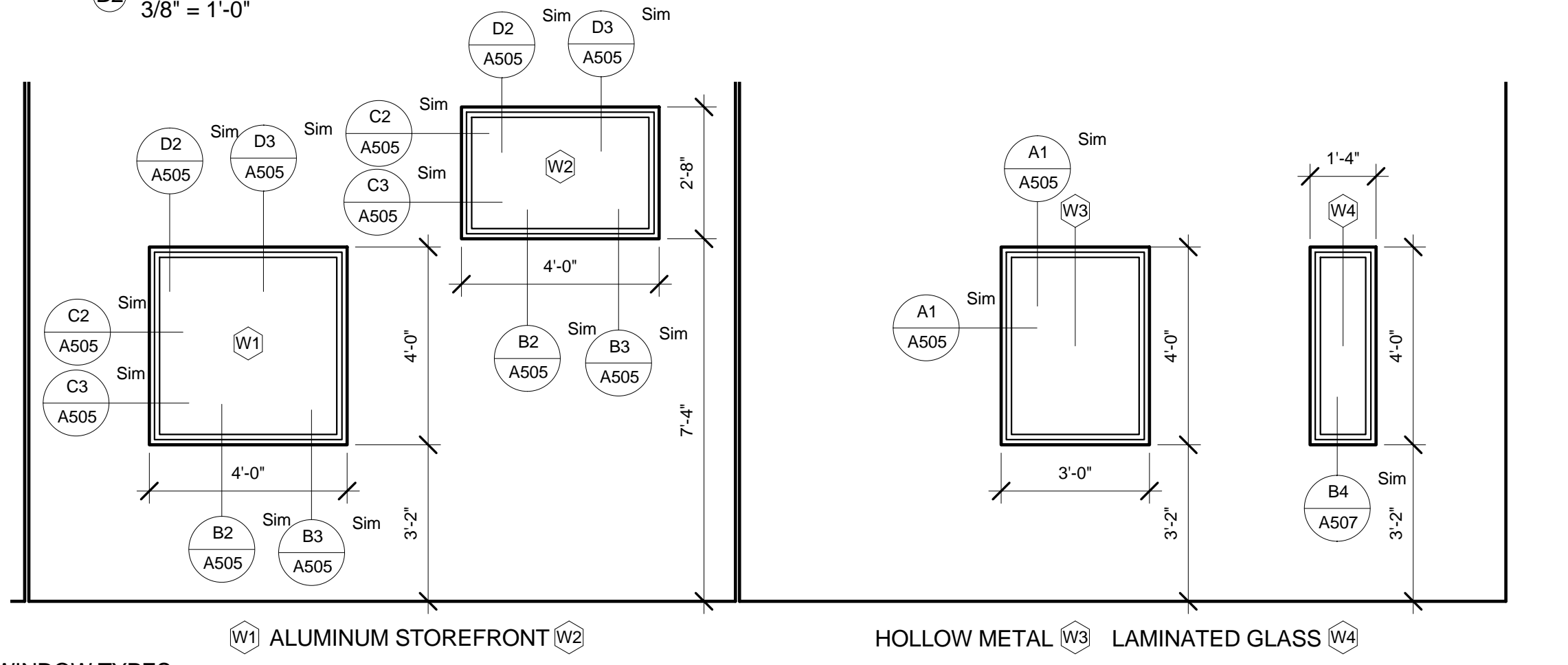
B3 FRAME TYPES
3/8" = 1'-0"



B2 DOOR TYPES
3/8" = 1'-0"

ROOM FINISH SCHEDULE								
NUMBER	ROOM NAME	FLOOR	BASE MATL	WALLS				NOTES
				N	S	E	W	

Window Schedule				
Type Mark	Width	Height	Sill Height	Comments
W1	4' - 0"	4' - 0"	3' - 2"	
W2	4' - 0"	2' - 8"	7' - 4"	
W3	3' - 0"	4' - 0"	3' - 2"	
W4	1' - 4"	4' - 0"	3' - 2"	



B1 WINDOW TYPES
3/8" = 1'-0"

DOOR AND FRAME SCHEDULE										
DOOR NO.	TYPE	WIDTH	HT	MTL	FRAME			FIRE RATING	NOTES	
					TYPE	MTL	HEAD			
A100	4A	10' - 0"	10' - 0"	ALUM / GLASS	B1	ALUM			SEE DOOR TYPE	
A101	4B	10' - 0"	7' - 8"	ALUM / GLASS	B1	ALUM			SEE DOOR TYPE	
A103a	1A	3' - 0"	7' - 0"	WD	A1	HM	A1/A505	A1/A505	1 HR	
A103b	1A	3' - 0"	7' - 0"	WD	A1	HM	A1/A505	A1/A505		
A104	1A	3' - 0"	7' - 0"	WD	A1	HM	A1/A505	A1/A505		
A105	1A	3' - 0"	7' - 0"	WD	A1	HM	A1/A505	A1/A505		
A106	1A	3' - 0"	7' - 0"	WD	A1	HM	A1/A505	A1/A505		
A107	1A	2' - 8"	7' - 0"	WD	A1	HM	A1/A505	A1/A505		
A108	1A	3' - 0"	7' - 0"	WD	A1	HM	A1/A505	A1/A505		
A110	1A	3' - 0"	7' - 0"	WD	A1	HM	A1/A505	A1/A505		
A111	1A	3' - 0"	7' - 0"	WD	A1	HM	A1/A505	A1/A505		
A112	1A	3' - 0"	7' - 0"	WD	A1	HM	A1/A505	A1/A505		
A113	1A	3' - 0"	7' - 0"	WD	A1	HM	A1/A505	A1/A505	Salvaged and Relocated	
A114	1A	2' - 8"	7' - 0"	WD	A1	HM	A1/A505	A1/A505	Salvaged and Relocated	
A115	1A	2' - 8"	7' - 0"	WD	A1	HM	A1/A505	A1/A505	Salvaged and Relocated	
A116	1A	3' - 0"	7' - 0"	WD	A1	HM	A1/A505	A1/A505	Salvaged and Relocated	
A117	1A	3' - 0"	7' - 0"	HM	A2	HM	B1/A505	C1/A505		
A123	1A	3' - 0"	7' - 0"	WD	A1	HM	A1/A505	A1/A505		
A125	1A	3' - 0"	7' - 0"	WD	A1	HM	A1/A505	A1/A505	1 HR Salvaged and Relocated	
A127	1A	3' - 0"	7' - 0"	WD	A1	HM	A1/A505	A1/A505	Salvaged and Relocated	
A129									FLOOR HATCH	
B101	3A	3' - 0"	7' - 0"	WD	A1	HM	A1/A505	A1/A505	2 HR	
B102	3A	3' - 0"	7' - 0"	WD	A1	HM	A1/A505	A1/A505		
B103	1A	3' - 0"	7' - 0"	WD	A1	HM	A1/A505	A1/A505		
B104	3A	3' - 6"	7' - 0"	WD	A1	HM	A1/A505	A1/A505	2 HR	
B105	3A	3' - 0"	7' - 0"	WD	C1	HM	A1/A505	A1/A505		
B106	1A	3' - 0"	7' - 0"	WD	A1	HM	A1/A505	A1/A505		
B107	3A	3' - 6"	7' - 0"	HM	A1	HM	A1/A505	A1/A505	1 HR	
B110	1A	3' - 0"	7' - 0"	WD	A1	HM	A1/A505	A1/A505		
B111	1A	3' - 6"	7' - 0"	HM	A1	HM	A1/A505	A1/A505	1 HR	
B116.A	2A	4' - 0"	7' - 0"	HM	A1	HM	A1/A505	A1/A505		
B116.B	2A	4' - 0"	7' - 0"	HM	A2	HM	B1/A505	C1/A505		
B117	2A	4' - 0"	7' - 0"	HM	A1	HM	A1/A505	A1/A505	1 HR	
B118.A	2A	3' - 0"	7' - 0"	HM	A1	HM	A1/A505	A1/A505		
B118.B	2A	3' - 0"	7' - 0"	HM	A1	HM	A1/A505	A1/A505		
B119.A	2A	3' - 0"	7' - 0"	HM	A1	HM	A1/A505	A1/A505		
B119.B	2A	3' - 0"	7' - 0"	HM	A1	HM	A1/A505	A1/A505		
B120	2A	4' - 0"	7' - 0"	HM	A1	HM	A1/A505	A1/A505		
S1	1A	3' - 0"	7' - 0"	HM	A1	HM	A1/A505	A1/A505	1 HR	
S2	1A	3' - 0"	7' - 0"	HM	A1	HM	A1/A505	A1/A505	1 HR	

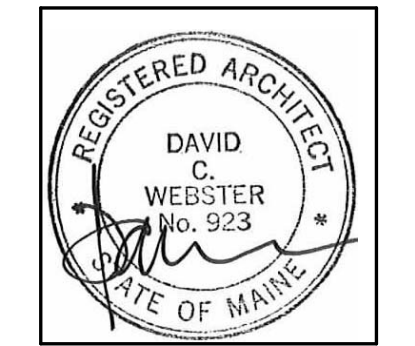


49 DARTMOUTH STREET
 PORTLAND, MAINE 04101
 207-775-1059
 www.pdtarch.com

COPYRIGHT 2013
 PDT Architects

Reuse or reproduction of the contents of this document is not permitted without written permission of PDT Architects.

E. M. G.-PHASE 2-ADDITION & RENOVATION
 53 Sewall Street, Portland, ME 04102



JOB NO. 12084

DRWN. CHK AJK

SCALE: 3/8" = 1'-0"

ISSUE July 11, 2013

TITLE SCHEDULES AND DIAGRAMS

SHEET A600